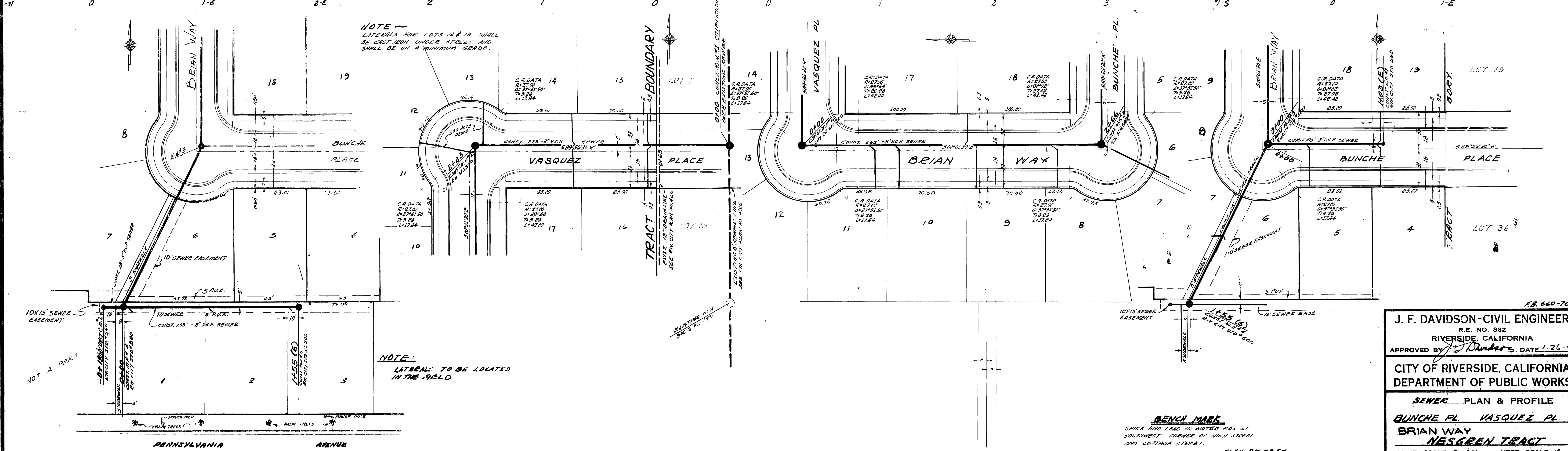
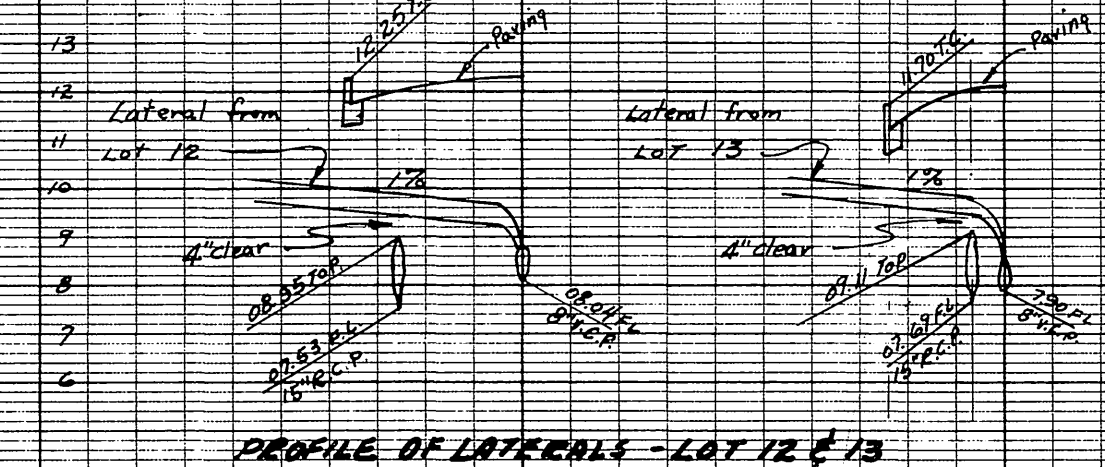
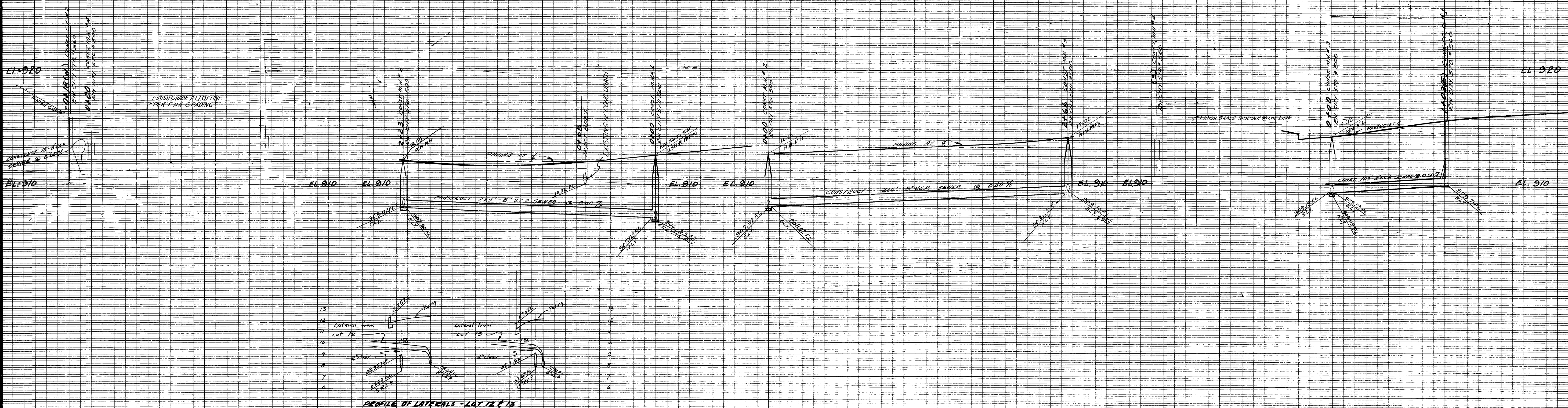


REVISION NO. 1
 Revised grade on Sewer in Easement
 Between Lots 67, and back of Lots 1-3.
Art. Thal 6-7-60
 APPROVED BY DATE

* As Built 7/15/60 R. Mitchell



NOTE ~
LATERALS FOR LOTS 12 & 13 SHALL
BE CAST IRON UNDER STREETS AND
SHALL BE ON A MINIMUM GRADE.

NOTE:
LATERALS TO BE LOCATED
IN THE FIELD.

BENCH MARK
SPIKE AND LEAD IN WATER BOX AT
SOUTHWEST CORNER OF MAIN STREET
AND COTTAGE STREET.
ELEV. 910.73 FT.

J. F. DAVIDSON - CIVIL ENGINEER
R.E. NO. 862
RIVERSIDE, CALIFORNIA
APPROVED BY *J. Davidson* DATE 1-26-60

CITY OF RIVERSIDE, CALIFORNIA
DEPARTMENT OF PUBLIC WORKS

SEWER PLAN & PROFILE
QUINCHE PL. VASQUEZ PL.
BRIAR WAY
NESGREN TRACT

HORIZ. SCALE 1" = 40' VERT. SCALE 1" = 4'

APPROVED BY *J. Davidson*
Director of Public Works
DATE 2-9-60 SHEET 2 OF 4

NO. 5-214

F.B. 660-70