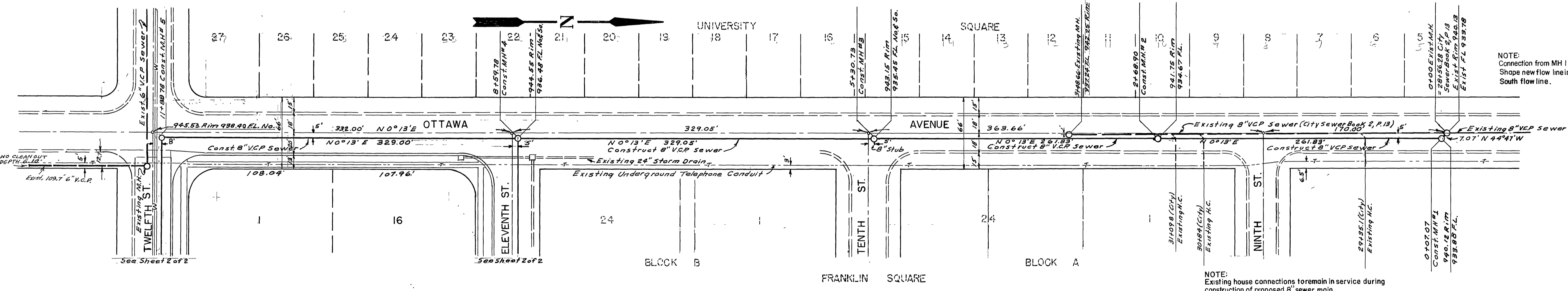


B.M. SBL AT BGR ON 12TH NORTHWEST CORNER OTTAWA AVE & 12TH STREET. ELEV= 944.75'



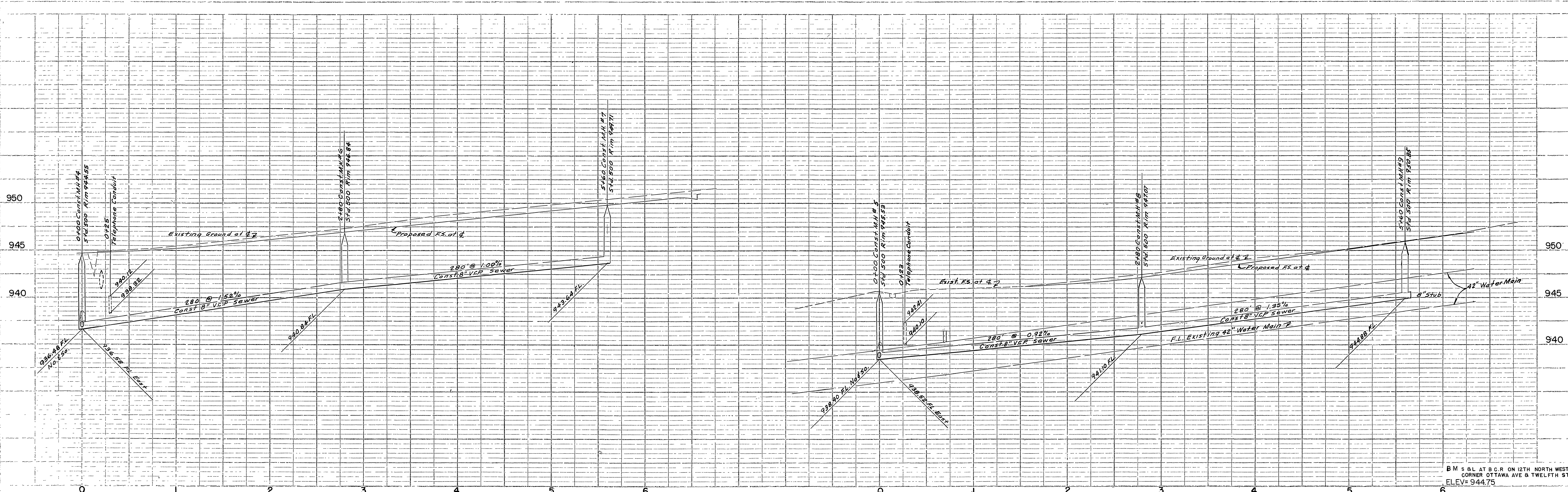
NOTE: Connection from MH 1 to existing manhole to be per City Std. 500. Shape new flow line in existing manhole to meet existing North-South flow line.

NOTE: Existing house connections to remain in service during construction of proposed 8" sewer main.

NOTE: Meet existing F.S. with manhole rims.

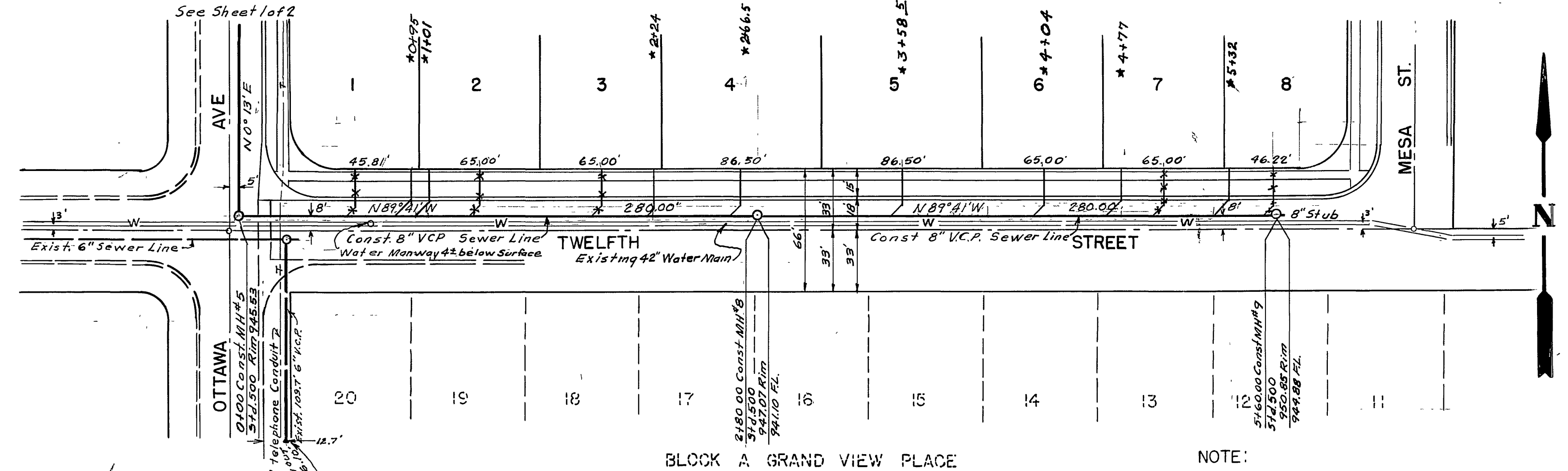
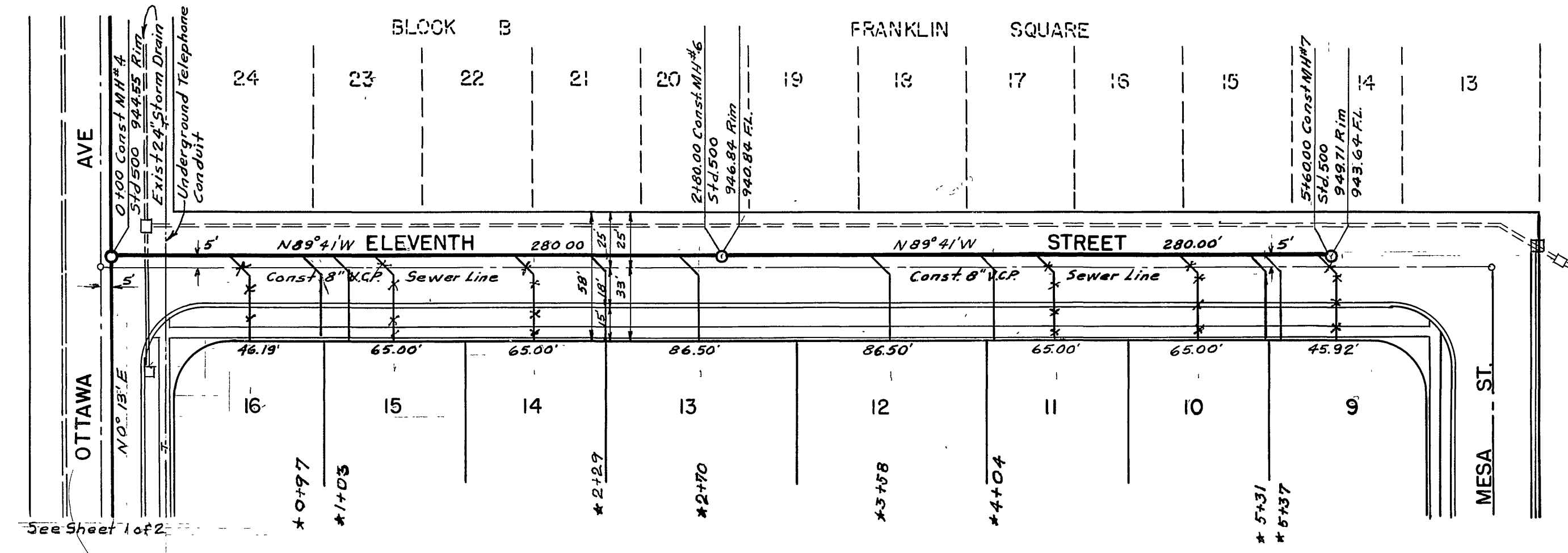
ESTIMATE OF QUANTITIES	ITEM	UNIT	QUANTITY
	MANHOLE STD. 500	ea.	9
	8" V.C.P.	ln. ft.	2308.78
	LATERALS	ea.	16

**RIVERSIDE ENGINEERING CO. INC.**  
 RIVERSIDE, CALIFORNIA  
 APPROVED: [Signature] RE 11957 DATE 2/17/00  
**CITY OF RIVERSIDE, CALIFORNIA**  
 DEPARTMENT OF PUBLIC WORKS  
 SEWER PLAN & PROFILE  
 OTTAWA AVENUE  
 BURTON SUBDIVISION  
 HORZ-1"=50' VERT-1"=5'  
 APPROVED: [Signature]  
 DIRECTOR OF PUBLIC WORKS  
 No. S-215  
 Date 3-8-00 Sheet 1 of 2

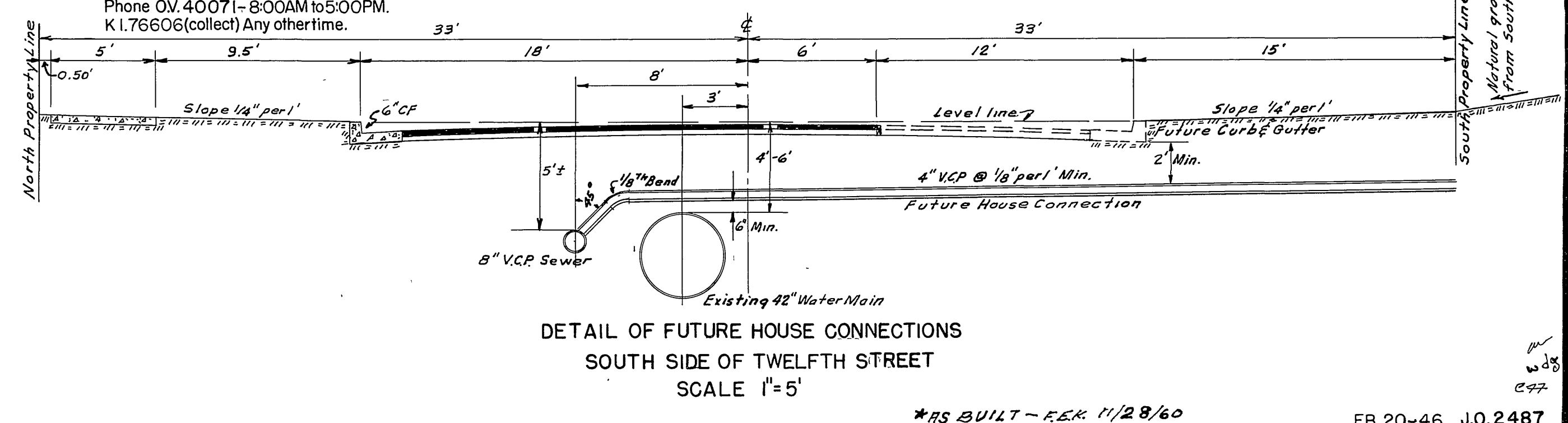


PROJECT	SURVEY
DATE	NOV 1957
BY	J. B. BROWN
CHECKED	J. B. BROWN
SCALE	AS SHOWN

B.M. 5 & 11 AT B.C.R. ON 12TH NORTH WEST CORNER OTTAWA AVE & TWELFTH ST. ELEV=944.75



NOTE:  
Notify Telephone Co. 48hr. prior to any excavation on 11th & 12th Sts.  
Phone OV. 40071-8:00AM to 5:00PM.  
K1.76606 (collect) Any other time.



DETAIL OF FUTURE HOUSE CONNECTIONS  
SOUTH SIDE OF TWELFTH STREET  
SCALE 1"=5'

\*AS BUILT - PER 1/28/60

NOTE:  
EXACT LOCATION OF HOUSE CONNECTIONS TO BE DETERMINED IN THE FIELD

RIVERSIDE ENGINEERING CO. INC.	
RIVERSIDE	CALIFORNIA
APPROVED	DATE 2/17/60
CITY OF RIVERSIDE, CALIFORNIA DEPARTMENT OF PUBLIC WORKS	
SEWER PLAN & PROFILE 11th & 12th STREETS BURTON SUBDIVISION	
HORZ-1"=50'	VERT-1"=5'
APPROVED	N <sup>o</sup> S-215
DIRECTOR OF PUBLIC WORKS	
Date 3-8-60	Sheet 2 of 2

FB.20-46 J.O.2487