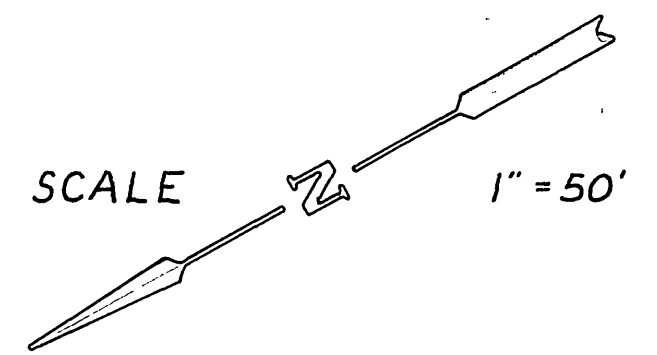


B.M. ELEV. 863.70 N+L IN S.E. COR. RET. KNOLL WAY & MULBERRY ST.
F.B. 659/24-30
SCALE HOR. 1" = 50'
VERT. 1" = 5'



NOTE: LAY WYES FLAT. LOCATE IN FIELD.

MULBERRY STREET  
SEWER EXTENSION  
BET.  
KNOLL WAY & STRONG ST.

B.L.  
B.L.

EAK 405

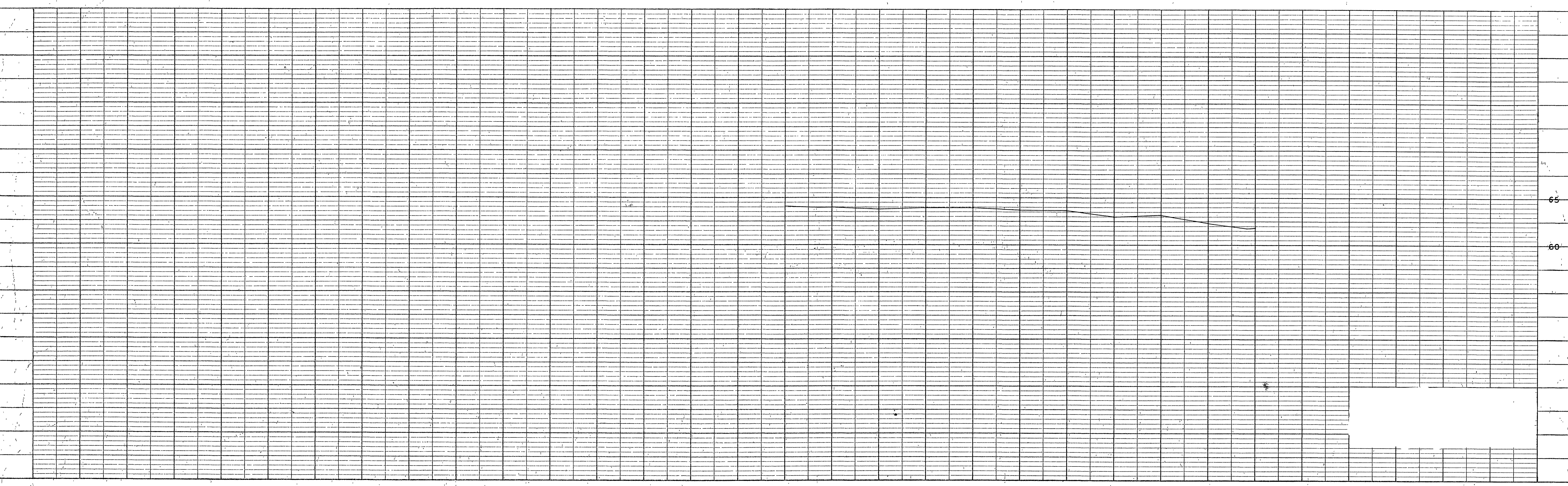
*Amended*

*A.R. Sheil*

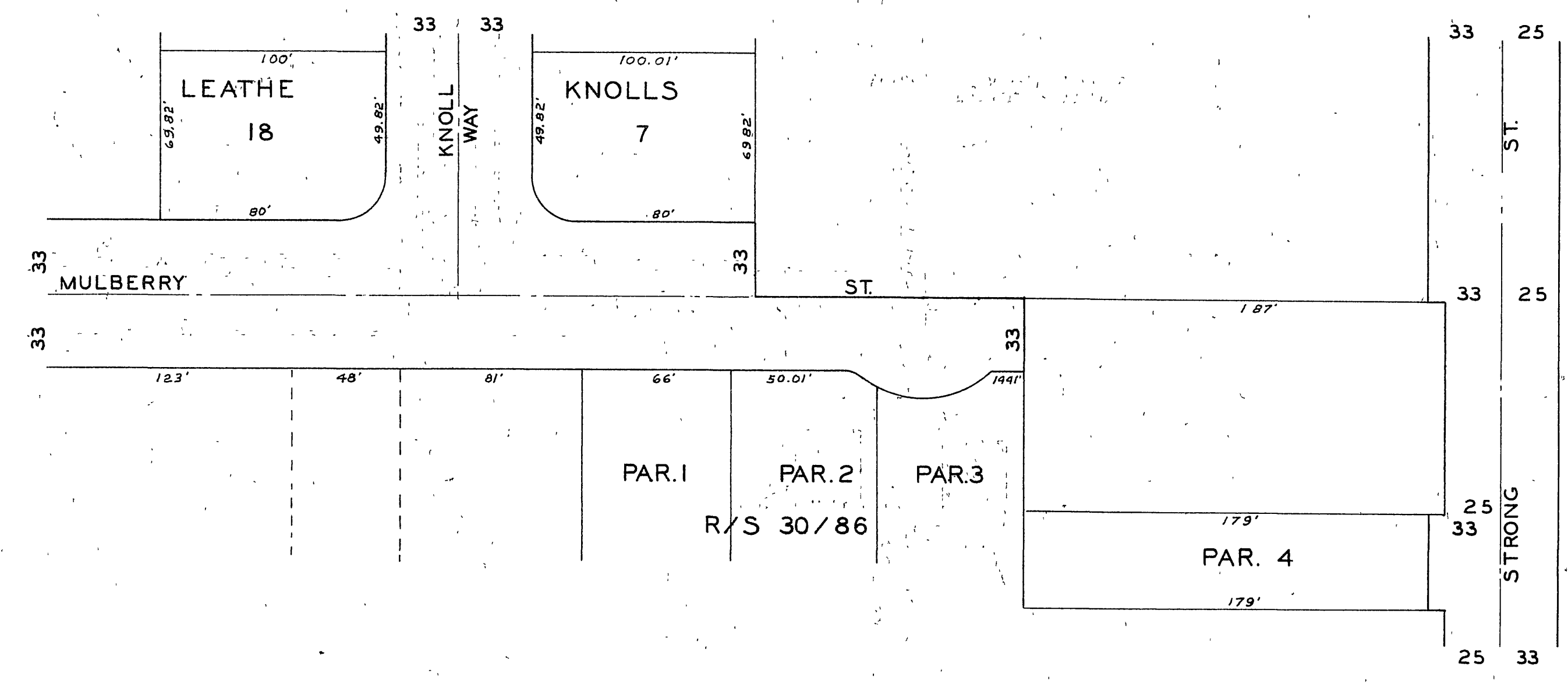
3-11-60

S-216

\* AS BUILT 4/13/60 B Low



PROFILE	
DATE	BY
STRUCTURE	NO. OF STATIONS
NO.	NO.
PLANNED	PLANNED
NOTED	NOTED
NO.	NO.
NO.	NO.



PLAN	
DATE	BY
STRUCTURE	NO. OF STATIONS
NO.	NO.
PLANNED	PLANNED
NOTED	NOTED
NO.	NO.
NO.	NO.

REVISIONS			CITY OF RIVERSIDE CALIFORNIA DEPARTMENT OF PUBLIC WORKS
MARK	DATE	DESCRIPTION	
DESIGNED BY	CHECKED BY	APPROVED BY	S-216
DRAWN BY		DIRECTOR OF PUBLIC WORKS	
RECOMMENDED BY	ASSISTANT CITY ENGINEER	DATE	

SHEET 216 OF 216