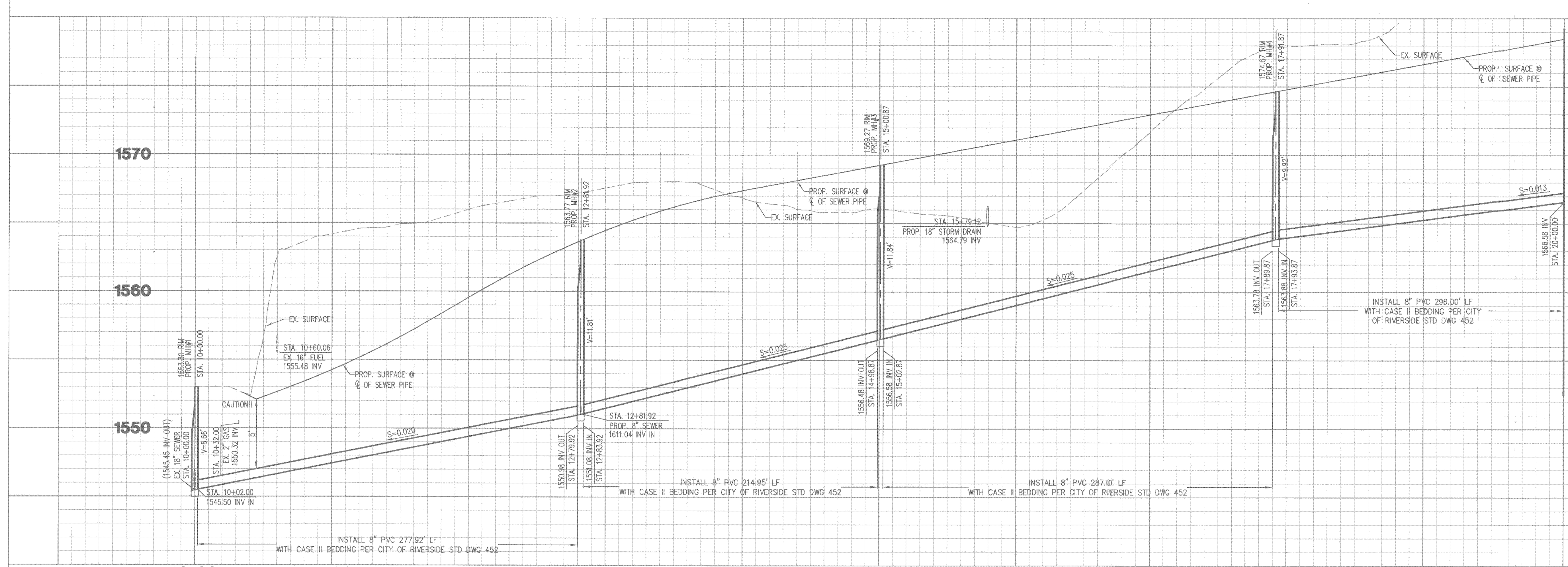


EXTERNAL REFERENCES: 17-260Pr-01 12-0216-cas-01 12-0216-cas-01 17390 SW 17390 SW 17390 SW 17390 SW 17390 SW 17390 SW 17390 SW 17390 SW 17390 SW 17390 SW
 FILENAME: M:\2017\17-390 Pr-01\17-390 Pr-01.dwg LAST SAVED ON: Sat 07 2019 8:25:07 AM BY: MICHAEL DN. For 07 2019 8:25:07 AM

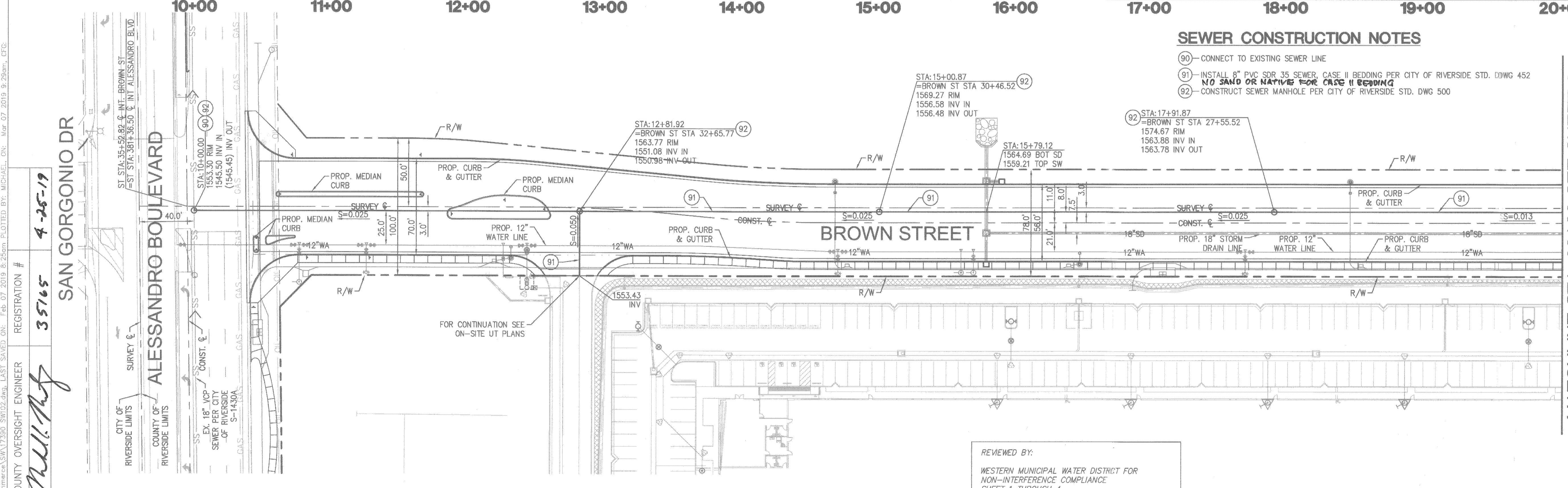


NOTE: SEWER LENGTHS IN PROFILE ARE ACTUAL LENGTHS AND MEASURED FROM INSIDE OF MANHOLE TO INSIDE OF MANHOLE.
 NOTE: EXISTING GRADES DO NOT FALL WITHIN THE ELEVATION RANGE SHOWN ON THESE PROFILES.

MATCHLINE STA: 20+00 SEE SHEET 3

PIPE CROSSINGS SHOWN IN PROFILE REPRESENT ELEVATIONS AT UTILITY CROSSING.

SCALE
 HORIZONTAL: 1"= 40'
 VERTICAL: 1"= 4'

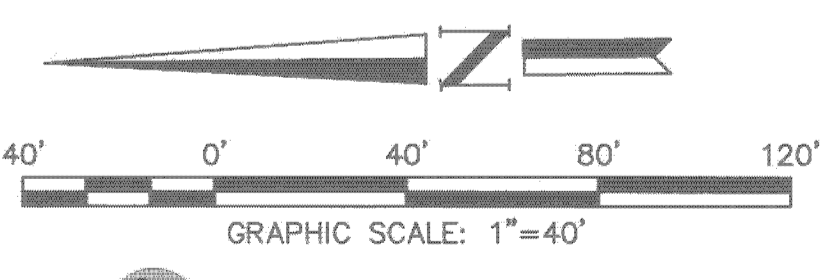


SEWER CONSTRUCTION NOTES

- (90) CONNECT TO EXISTING SEWER LINE
- (91) INSTALL 8" PVC SDR 35 SEWER, CASE II BEDDING PER CITY OF RIVERSIDE STD. DWG 452
 NO SAND OR NATIVE FOR CASE II BEDDING
- (92) CONSTRUCT SEWER MANHOLE PER CITY OF RIVERSIDE STD. DWG 500

MATCHLINE STA: 20+00 SEE SHEET 3

REVIEWED BY:
 WESTERN MUNICIPAL WATER DISTRICT FOR
 NON-INTERFERENCE COMPLIANCE
 SHEET 1 THROUGH 4
Derek Kawai 03-18-2019
 DEREK KAWAI DATE:
 DIRECTOR OF ENGINEERING

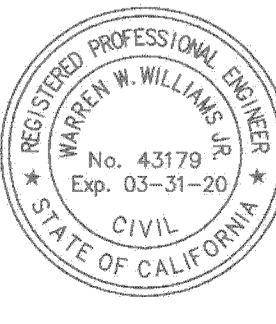


I.P. NO. 170064

REC'D COUNTY OVERSIGHT ENGINEER REGISTRATION # 35165 4-26-19
William Williams
SAN GORGONIO DR
ALESSANDRO BOULEVARD

CAUTION!! LOCATION OF EXISTING UTILITIES ON THESE PLANS ARE APPROXIMATE AND SHALL BE VERIFIED BY CONTRACTOR PRIOR TO CONSTRUCTION.
 WORK CONTAINED WITHIN THESE PLANS SHALL NOT COMMENCE UNTIL AN ENCROACHMENT PERMIT AND/OR A GRADING PERMIT HAS BEEN ISSUED.
 THE PRIVATE ENGINEER SIGNING THESE PLANS IS RESPONSIBLE FOR ASSURING THE ACCURACY AND ACCEPTABILITY OF THE DESIGN HEREON. IN THE EVENT OF DISCREPANCIES ARISING BETWEEN COUNTY APPROVAL OR PUBLIC CONSULTANTS AND THE PRIVATE ENGINEER SHALL BE RESPONSIBLE FOR DETERMINING AN ACCEPTABLE SOLUTION AND REVISIONS FOR APPROVAL BY THE COUNTY.
 Don't Dig...Until You Call U.S.A. Toll Free 811 for the location of buried utility lines. Don't disrupt vital services. TWO WORKING DAYS BEFORE YOU DIG.

RIVERSIDE COUNTY B.M. F8-G3
 EL. 1602.329'
 DESCRIPTION: PK NAIL AND CITY ENGINEER TAG IN THE SIDEWALK OVER THE WESTERLY WALL OF A CATCH BASIN, 1' NORTHERLY OF THE FACE OF CURB ALONG THE NORTHERLY CURB OF ALESSANDRO BLVD. EASTERLY OF MISSION GROVE PARKWAY.



PREPARED BY:
WRC Engineering, Inc.
 Civil Engineering/Land Surveying/Land Planning
W. Williams
 WARREN W. WILLIAMS R.C.E. 43179 DATE 3/7/19
 160 S. Old Springs Road Suite 210 Anaheim Hills, CA 92808 714-685-6860

MARK	REVISIONS	APPR.	DATE
DESIGNED BY	MTH	DRAWN BY	MAR
CHECKED BY	RJV		

CITY OF RIVERSIDE, CALIFORNIA
 PUBLIC WORKS DEPARTMENT
 APPROVED BY: TRAFFIC ENG [Signature] DATE: 4/1/19
 APPROVED BY: [Signature] DATE: April 12, 2019

ALESSANDRO COMMERCE CENTER PLOT PLAN 25422
 SEWER PLANS
 BROWN STREET STA: 10+00 TO 20+00
 SCALE: HORIZ: VERT:
 PW18-0454
S-2175
 2 OF 4 SHTS
 DWG. NO.:

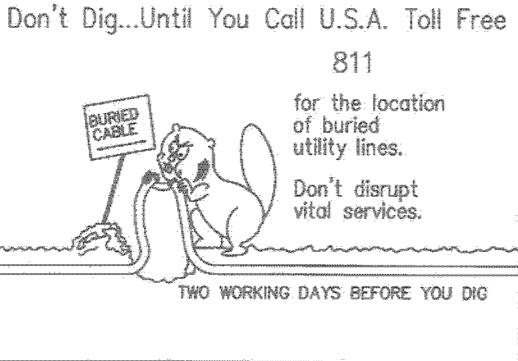
3/7/2019 - MYLAR SUBMITTAL

EXTERNAL REFERENCES: 17-390-m-01 12-92-ebchdy 12-92-ebchdy 12-92-ebchdy 17390 SW PROFILES 7390 AR Sht: 17390.dwg:101 17390 SW PROFILES 7390 AR Sht: 17390.dwg:101 17390 SW PROFILES 7390 AR Sht: 17390.dwg:101 17390 SW PROFILES 7390 AR Sht: 17390.dwg:101
 FILENAME: W:\2017\17-390-External References\17390 SW PROFILES 7390 AR Sht: 17390.dwg:101
 PLOT DATE: Mar 12 2019 3:23pm
 PLOTTED BY: MICHAEL ON
 Mor 13 2019 8:04am
 CFC
 www.ca_stamp 7390R102 7390 R102

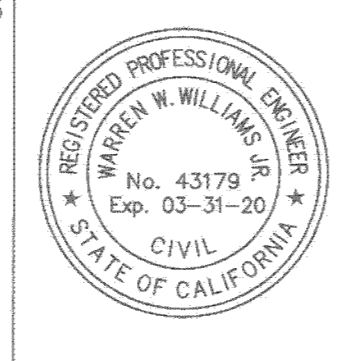
REC'D COUNTY OVERSIGHT ENGINEER
 REGISTRATION # 35165
 4-25-19

CAUTION!!
 LOCATION OF EXISTING UTILITIES ON THESE PLANS ARE APPROXIMATE AND SHALL BE VERIFIED BY CONTRACTOR PRIOR TO CONSTRUCTION.

NOTE:
 WORK CONTAINED WITHIN THESE PLANS SHALL NOT COMMENCE UNTIL AN ENCROACHMENT PERMIT AND/OR A GRADING PERMIT HAS BEEN ISSUED.
 THE PRIVATE ENGINEER SIGNING THESE PLANS IS RESPONSIBLE FOR ASSURING THE ACCURACY AND ACCEPTABILITY OF THE DESIGN HEREON IN THE EVENT OF DISCREPANCIES ARISING FROM ANY COUNTY APPROVAL OR DURING CONSTRUCTION. THE PRIVATE ENGINEER SHALL BE RESPONSIBLE FOR DETERMINING ANY ACCEPTABLE SOLUTION AND REVISING THE PLANS FOR APPROVAL BY THE COUNTY.



RIVERSIDE COUNTY B.M. F8-G3
 EL. 1602.329'
 DESCRIPTION: PK NAIL AND CITY ENGINEER TAG IN THE SIDEWALK OVER THE WESTERLY WALL OF A CATCH BASIN, 1' NORTHERLY OF THE FACE OF CURB ALONG THE NORTHERLY CURB OF ALESSANDRO BLVD. EASTERLY OF MISSION GROVE PARKWAY.



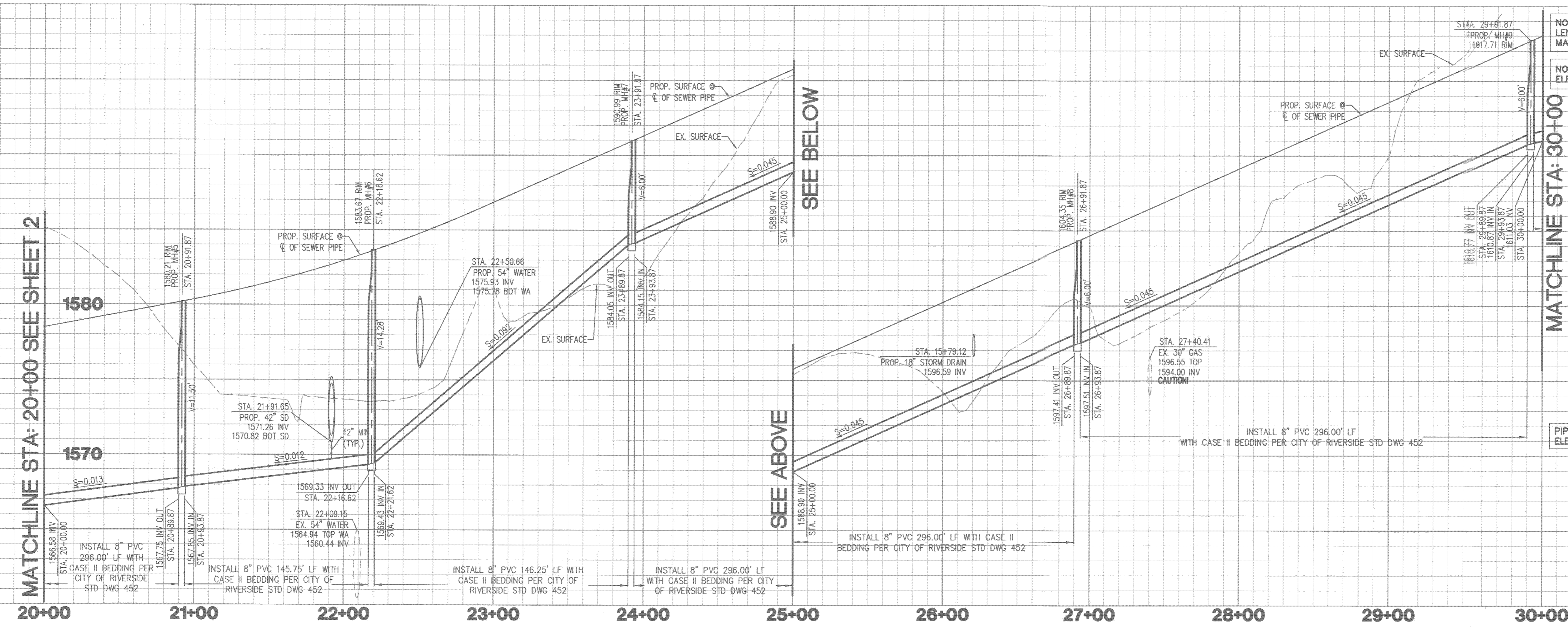
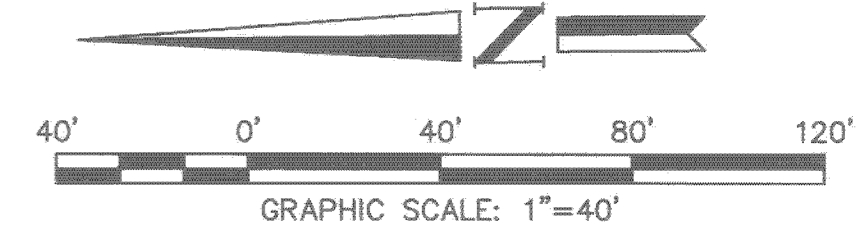
PREPARED BY:
WRC Engineering, Inc.
 Civil Engineering/Land Surveying/Land Planning
 160 S. Old Springs Road
 Suite 210
 Anaheim Hills, CA 92808
 714-685-6860
 Warren W. Williams
 R.C.E. 43179
 DATE: 3/7/19

REVIEWED BY:
 WESTERN MUNICIPAL WATER DISTRICT FOR NON-INTERFERENCE COMPLIANCE
 SHEET 1 THROUGH 4
 Derek Kawai
 DIRECTOR OF ENGINEERING
 DATE: 03-18-2019

MARK	REVISIONS	APPR.	DATE
DESIGNED BY: MTH	DRAWN BY: MAJ	CHECKED BY: RJV	

CITY OF RIVERSIDE, CALIFORNIA
 PUBLIC WORKS DEPARTMENT
 APPROVED BY: [Signature]
 PRINCIPAL ENGINEER
 ENGINEERING MANAGER
 TRAFFIC ENG
 DATE: March 17, 2019

ALESSANDRO COMMERCE CENTER
 PLOT PLAN 25422
 SEWER PLANS
 BROWN STREET STA: 20+00 TO 30+00
 SCALE: HORIZ: VERT:
 PW18-0454
 S-2175
 3 OF 4 SHTS
 DWG. NO.:
 I.P. NO. 170064



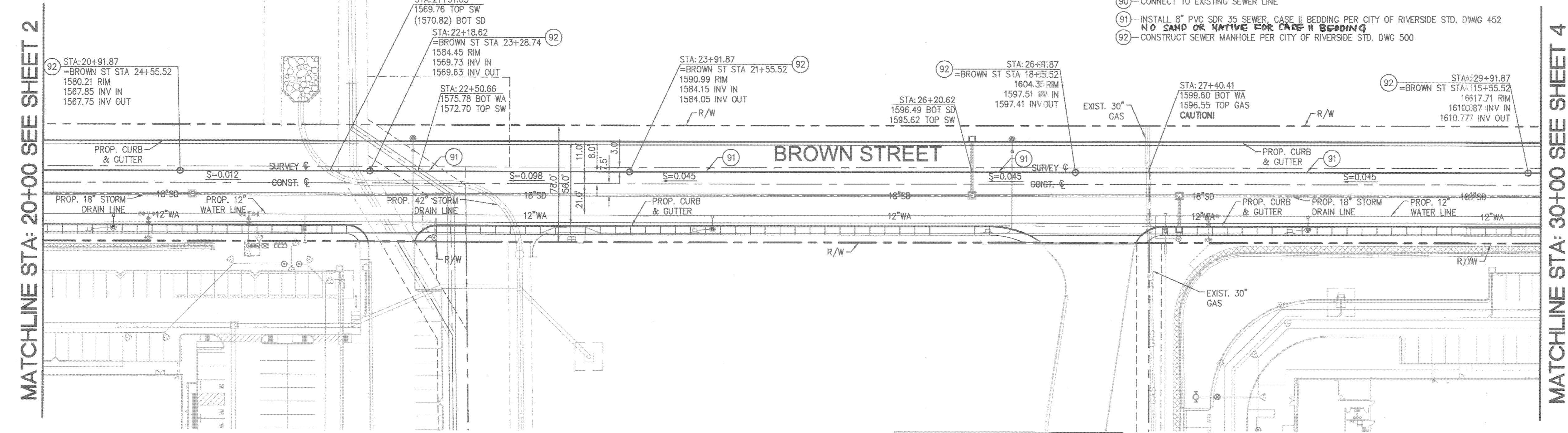
NOTE: SEWER LENGTHS IN PROFILE ARE ACTUAL LENGTHS AND MEASURED FROM INSIDE OF MANHOLE TO INSIDE OF MANHOLE.
 NOTE: EXISTING GRADES DO NOT FALL WITHIN THE ELEVATION RANGE SHOWN ON THESE PROFILES.

PIPE CROSSINGS SHOWN IN PROFILE REPRESENT ELEVATIONS AT UTILITY CROSSING.

SCALE
 HORIZONTAL: 1" = 40'
 VERTICAL: 1" = 4'

SEWER CONSTRUCTION NOTES

- 90 - CONNECT TO EXISTING SEWER LINE
- 91 - INSTALL 8" PVC SDR 35 SEWER, CASE II BEDDING PER CITY OF RIVERSIDE STD. DWG 452
NO SAND OR NATIVE FOR CASE II BEDDING
- 92 - CONSTRUCT SEWER MANHOLE PER CITY OF RIVERSIDE STD. DWG 500



MATCHLINE STA: 20+00 SEE SHEET 2

MATCHLINE STA: 30+00 SEE SHEET 4

3/7/2019 - MYLAR SUBMITTAL

