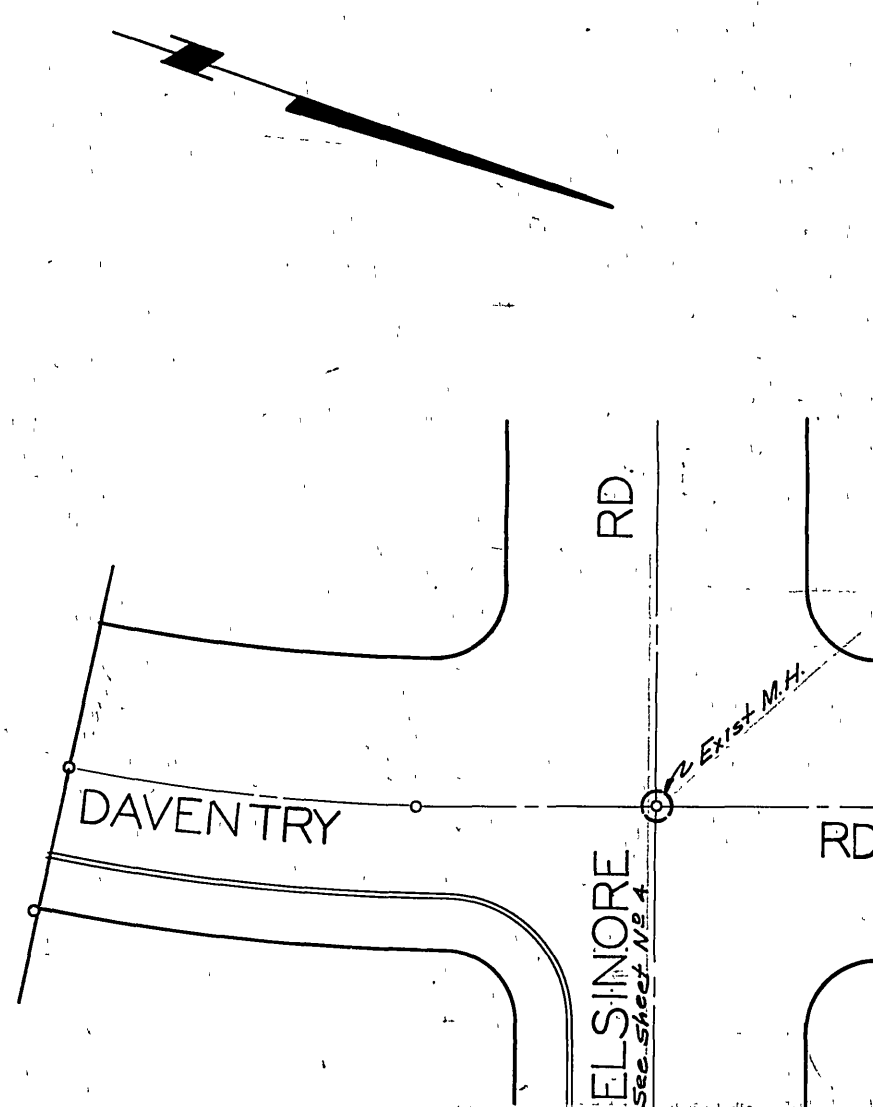
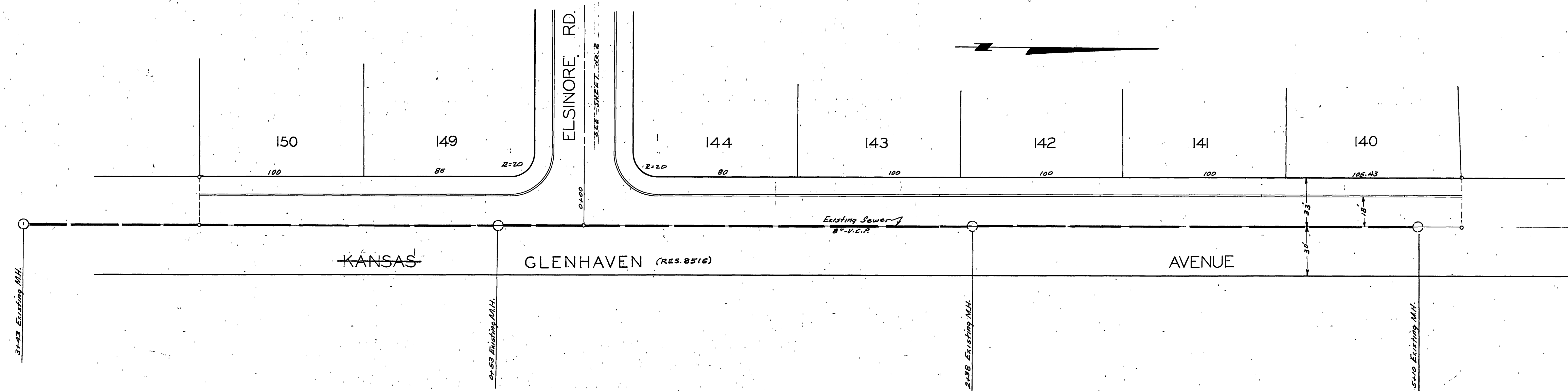


FB. 540-13  
504-77

**BENCH MARKS**

City BM	Lead & Spike in N. side Victoria Bridge, on S. end	El. 982.03
T.B.M. (6)	Spt. in P. Pole No. 17-13626 J at Station 25+28 on Elsinore Road.	El. 980.45
T.B.M.	Top of Weir, 7' Ely Station 0+47.64 on Flitridge Court.	El. 984.61
T.B.M.	R.R. Spt. in P. Pole No. 17-1987 J on S.E. Cor. Kansas & Arroyo Dr.	El. 978.34



**J.F. DAVIDSON-CIVIL ENGINEER**  
R.E. No. 862  
RIVERSIDE, CALIFORNIA  
APPROVED BY *J.F. Davidson* DATE 2-8-56

**CITY OF RIVERSIDE, CALIFORNIA**  
DEPARTMENT OF PUBLIC WORKS

**SEWER PLAN & PROFILE**  
**GLENHAVEN AVE. & DAVENTRY RD.**

**VICTORIA GROVES # 7**  
HORIZ. SCALE 1" = 40' VERT. SCALE 1" = 4'

APPROVED BY *J.F. Davidson*  
Director of Public Works  
DATE March 5, 1956

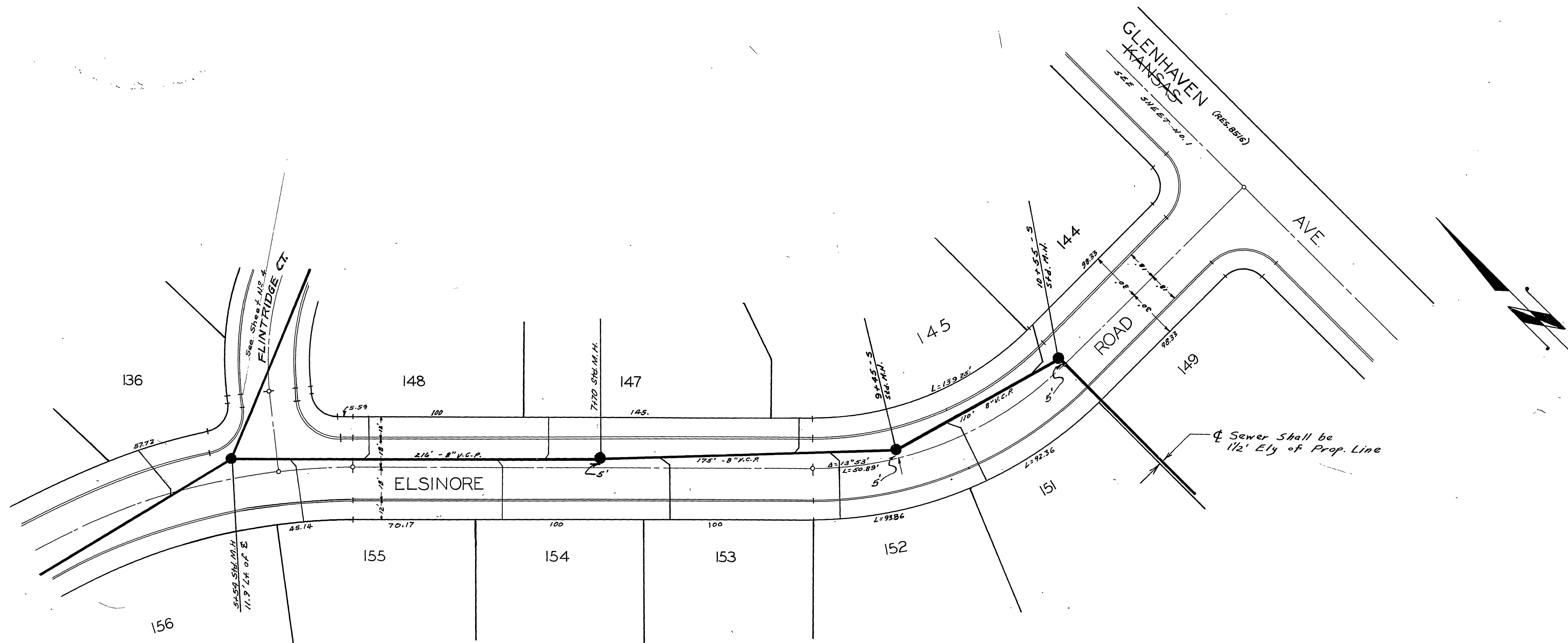
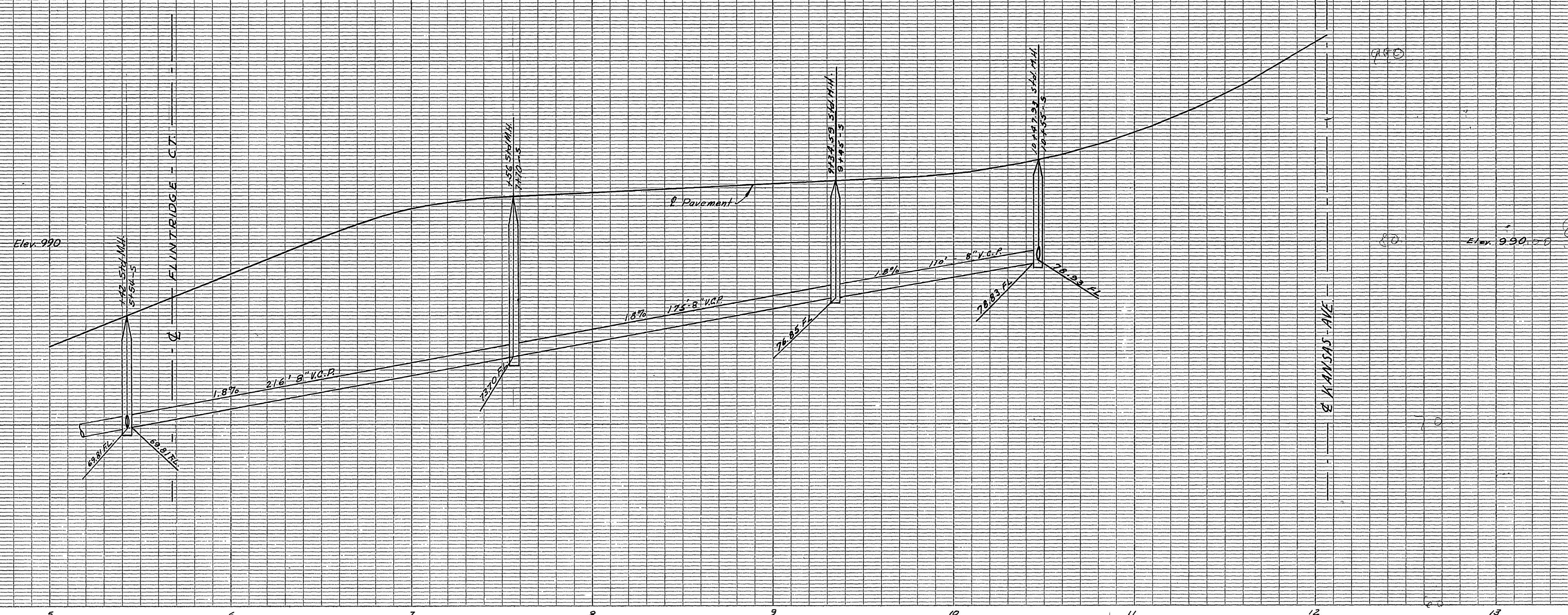
NO. S-22  
SHEET 7 OF 7

PROPERTY OF  
CITY OF RIVERSIDE  
DEPT. OF PUBLIC WORKS  
ENGINEERING DIVISION

ENGINEERED BY J.F. DAVIDSON CIVIL ENGINEER  
RIVERSIDE, CALIFORNIA  
APPROVED BY J.F. DAVIDSON CIVIL ENGINEER  
RIVERSIDE, CALIFORNIA  
DATE 2-8-56

ENGINEERED BY J.F. DAVIDSON CIVIL ENGINEER  
RIVERSIDE, CALIFORNIA  
APPROVED BY J.F. DAVIDSON CIVIL ENGINEER  
RIVERSIDE, CALIFORNIA  
DATE 2-8-56

PROPERTY OF  
CITY OF RIVERSIDE  
DEPT. OF PUBLIC WORKS  
ENGINEERING DIVISION



J.F. DAVIDSON - CIVIL ENGINEER  
R.E. No 862  
RIVERSIDE, CALIFORNIA  
APPROVED BY *J.F. Davidson* DATE 2-8-56

CITY OF RIVERSIDE, CALIFORNIA  
DEPARTMENT OF PUBLIC WORKS

SEWER PLAN & PROFILE  
ELSINORE RD

VICTORIA GROVES # 7  
HORIZ. SCALE 1" = 40' VERT. SCALE 1" = 4'

APPROVED BY *J.F. Davidson*  
DIRECTOR OF PUBLIC WORKS  
DATE March 5, 1956

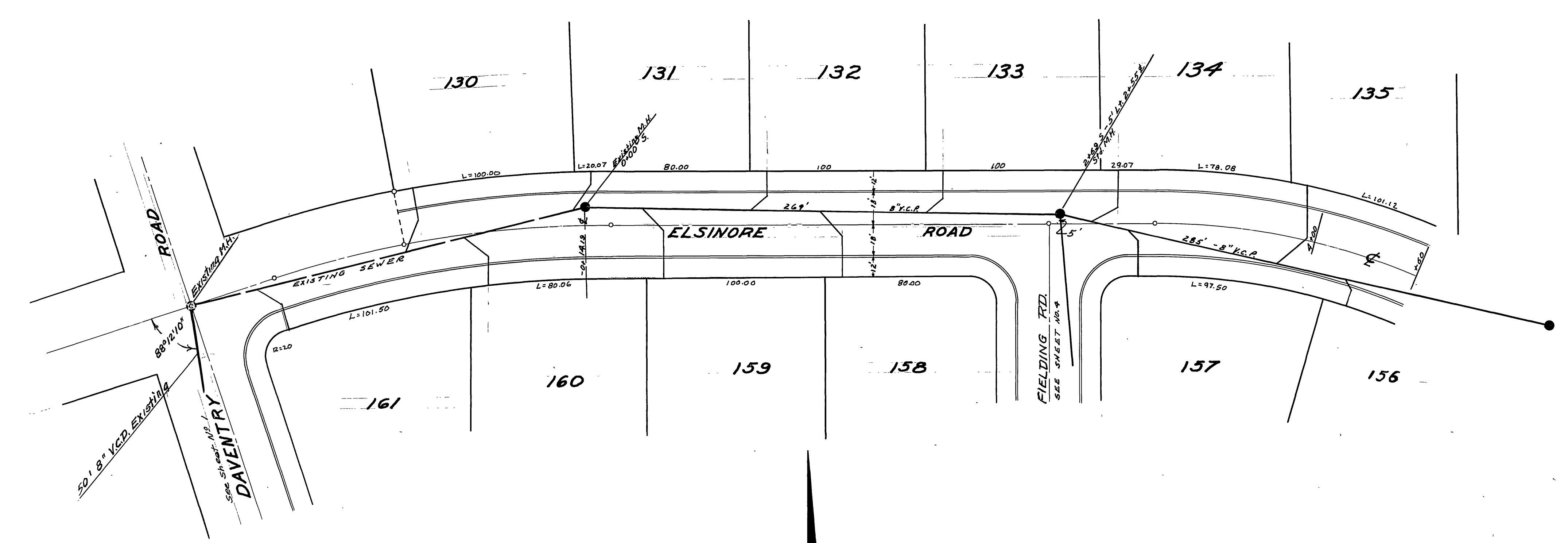
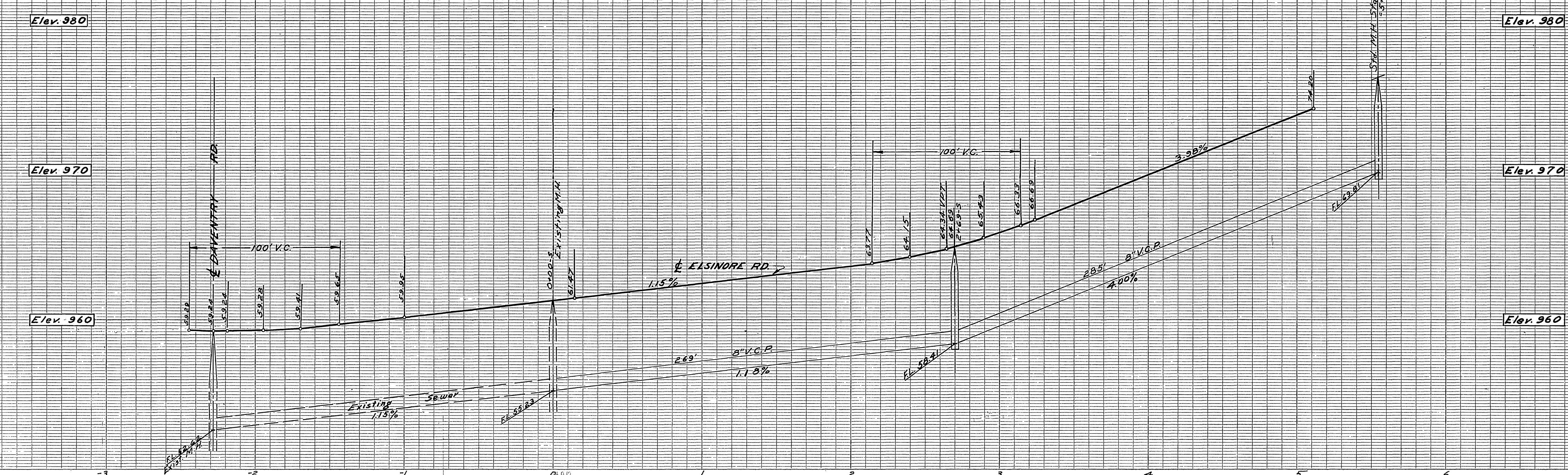
NO. 5-22  
SHEET 2 OF 5

PROPERTY OF  
CITY OF RIVERSIDE  
DEPT. OF PUBLIC WORKS  
ENGINEERING DIVISION

PROPERTY OF  
CITY OF RIVERSIDE  
DEPT. OF PUBLIC WORKS  
ENGINEERING DIVISION

PROPERTY OF  
CITY OF RIVERSIDE  
DEPT. OF PUBLIC WORKS  
ENGINEERING DIVISION

PROPERTY OF  
CITY OF RIVERSIDE  
DEPT. OF PUBLIC WORKS  
ENGINEERING DIVISION



PROPERTY OF  
CITY OF RIVERSIDE  
DEPT. OF PUBLIC WORKS  
ENGINEERING DIVISION

PROPERTY OF  
CITY OF RIVERSIDE  
DEPT. OF PUBLIC WORKS  
ENGINEERING DIVISION

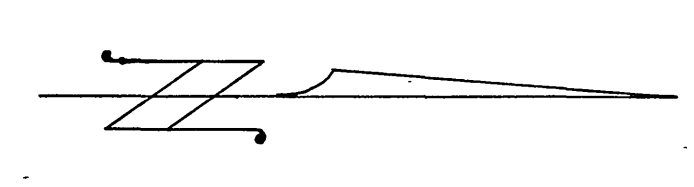
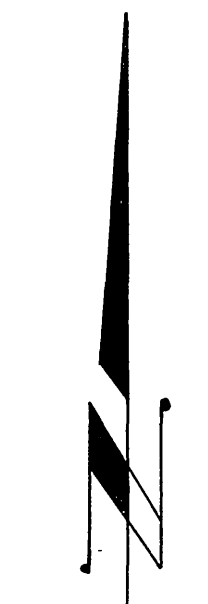
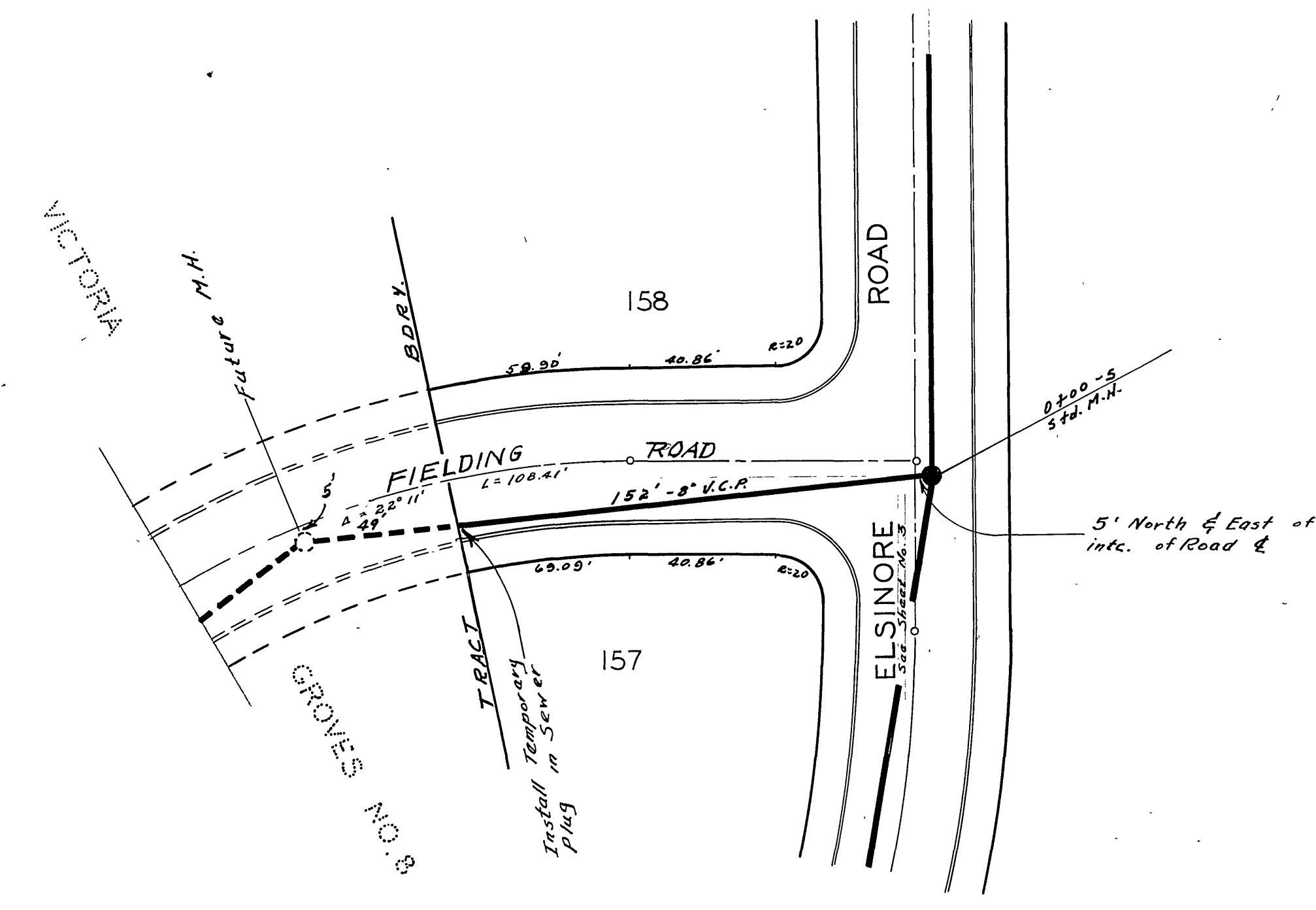
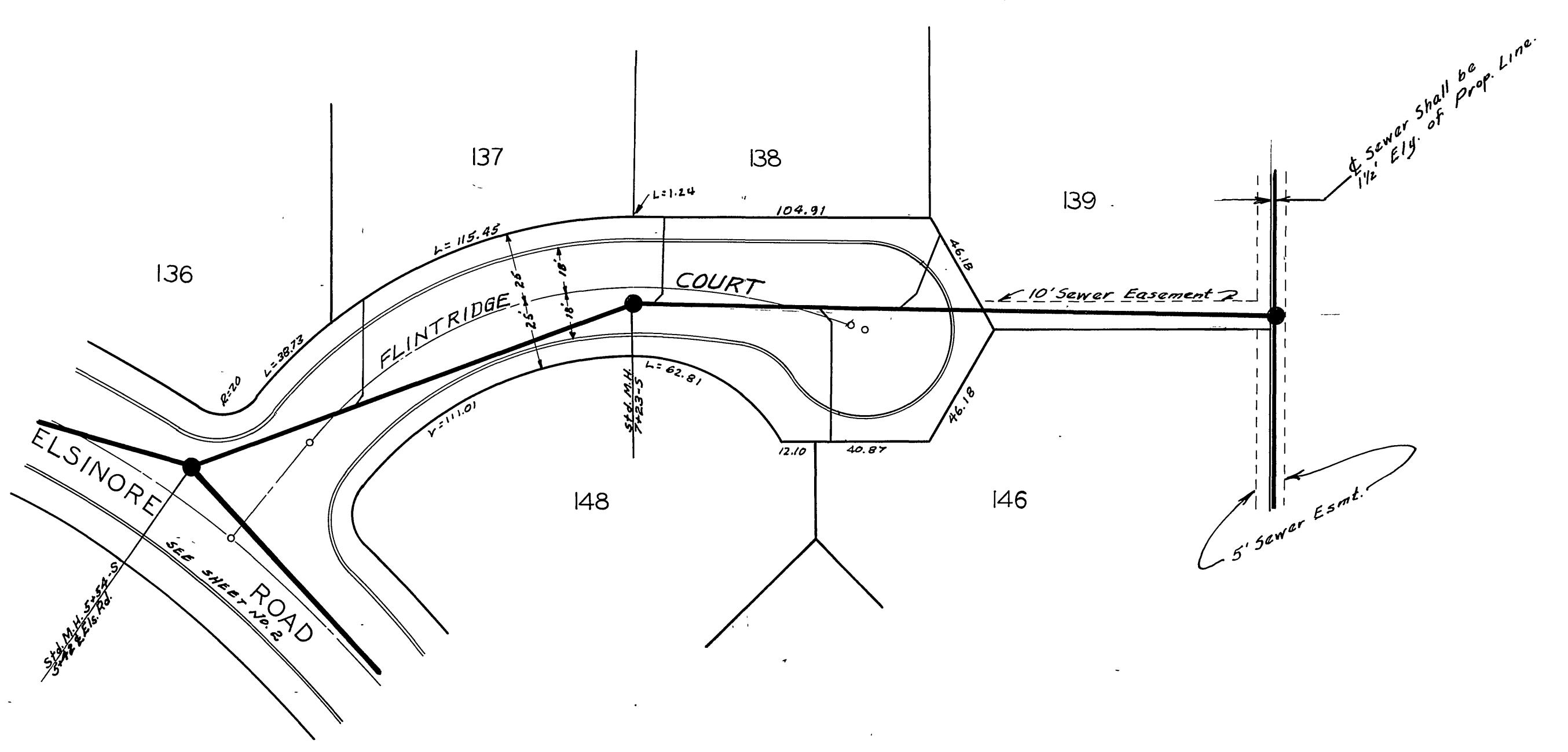
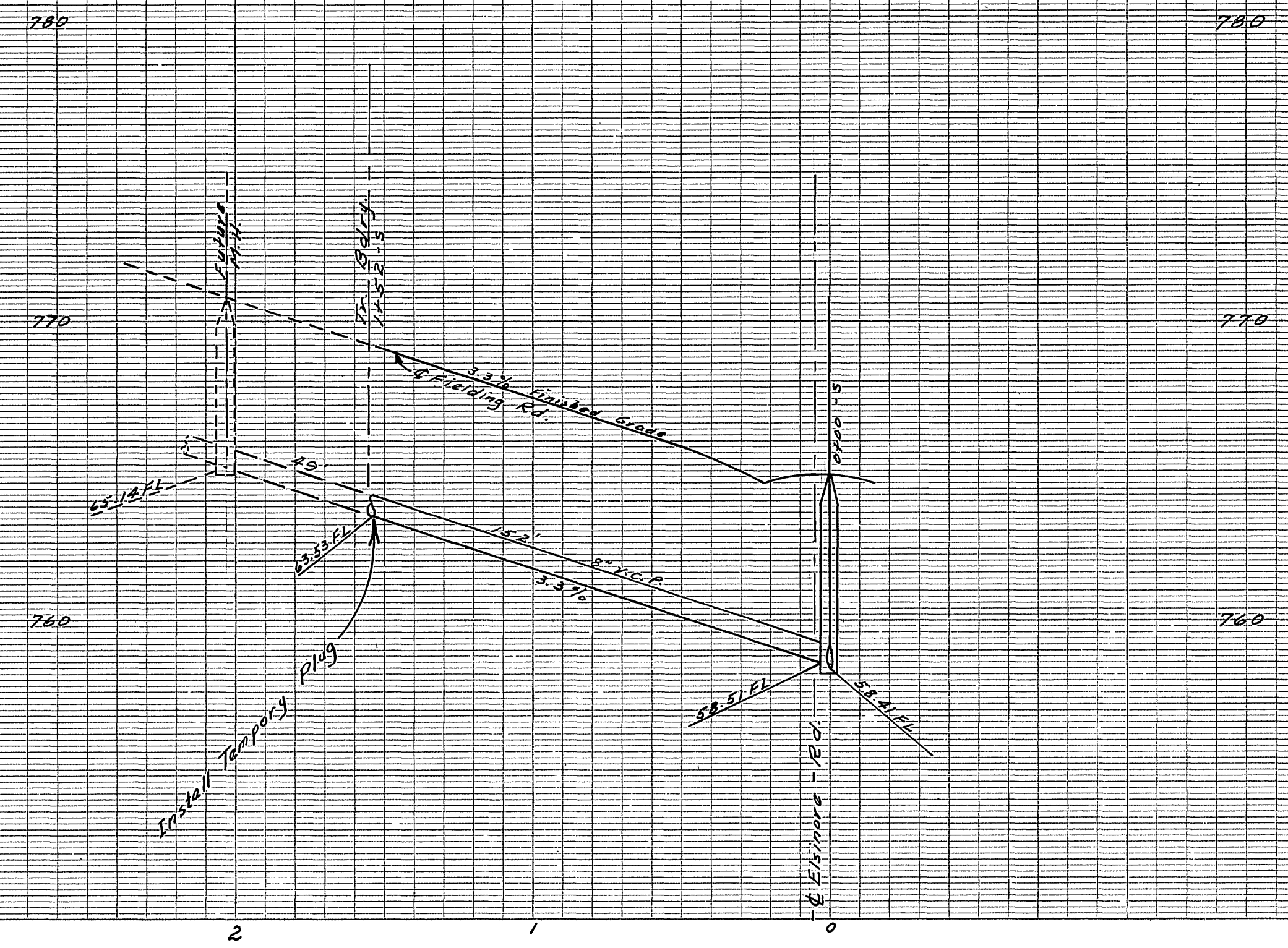
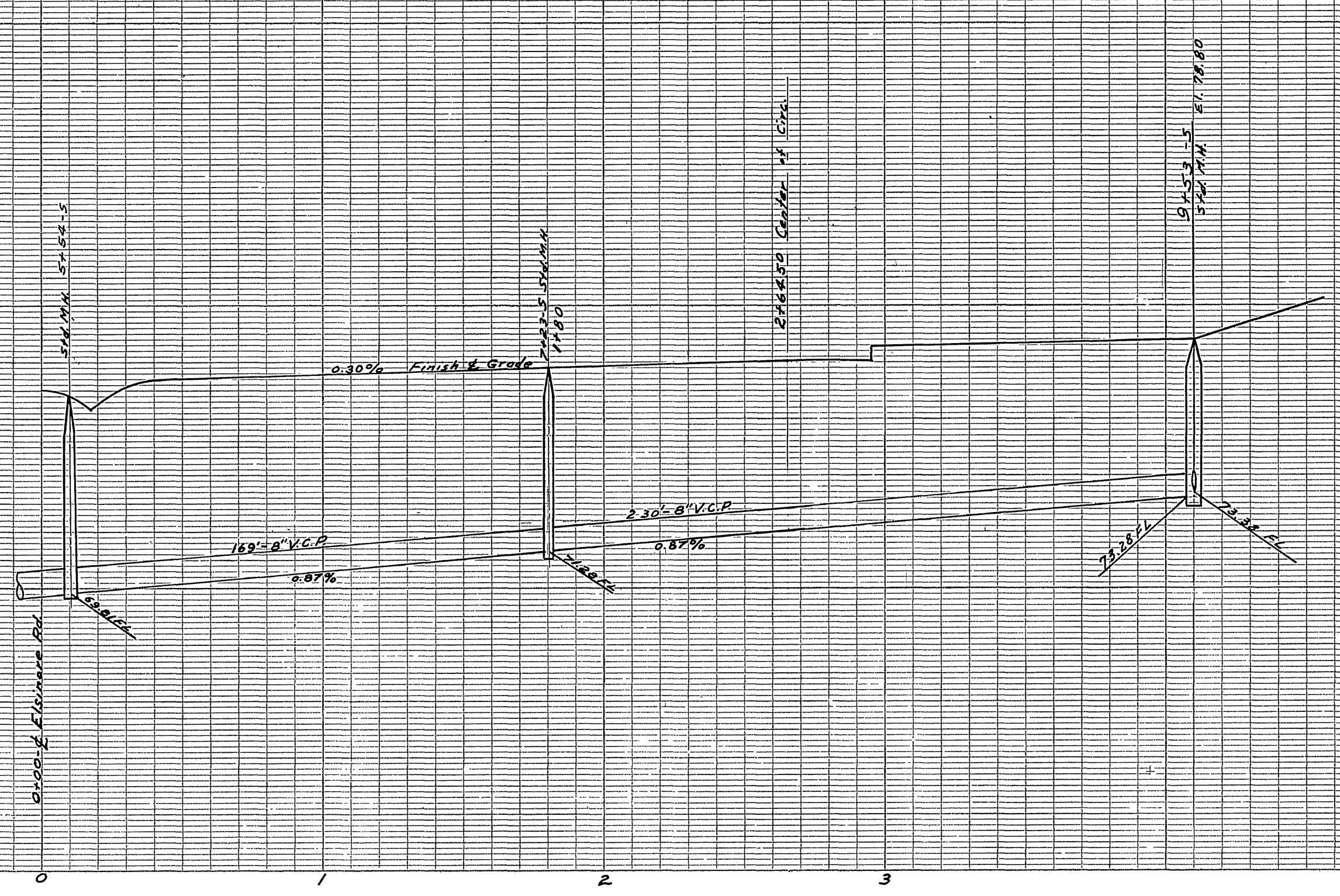
J.F. DAVIDSON-CIVIL ENGINEER  
R.E. No 862  
RIVERSIDE, CALIFORNIA  
APPROVED BY *J.F. Davidson* DATE 2-8-56  
CITY OF RIVERSIDE, CALIFORNIA  
DEPARTMENT OF PUBLIC WORKS  
**SEWER PLAN & PROFILE**  
**ELSINORE RD**  
**VICTORIA GROVES #7**  
HORIZ. SCALE 1" = 40' VERT. SCALE 1" = 4'  
APPROVED BY *J.F. Davidson*  
Director of Public Works  
DATE March 5, 1956  
NO. 5-22  
SHEET 3 OF 5

ENGINEERED IN ACCORDANCE WITH THE CALIFORNIA ENGINEERING PROFESSIONAL ACT  
REGISTERED PROFESSIONAL ENGINEER  
NO. 10000  
J.F. DAVIDSON  
CIVIL ENGINEER

ENGINEERED IN ACCORDANCE WITH THE CALIFORNIA ENGINEERING PROFESSIONAL ACT  
REGISTERED PROFESSIONAL ENGINEER  
NO. 10000  
J.F. DAVIDSON  
CIVIL ENGINEER

PROPERTY OF  
CITY OF RIVERSIDE  
DEPT. OF PUBLIC WORKS  
ENGINEERING DIVISION

PROPERTY OF  
CITY OF RIVERSIDE  
DEPT. OF PUBLIC WORKS  
ENGINEERING DIVISION



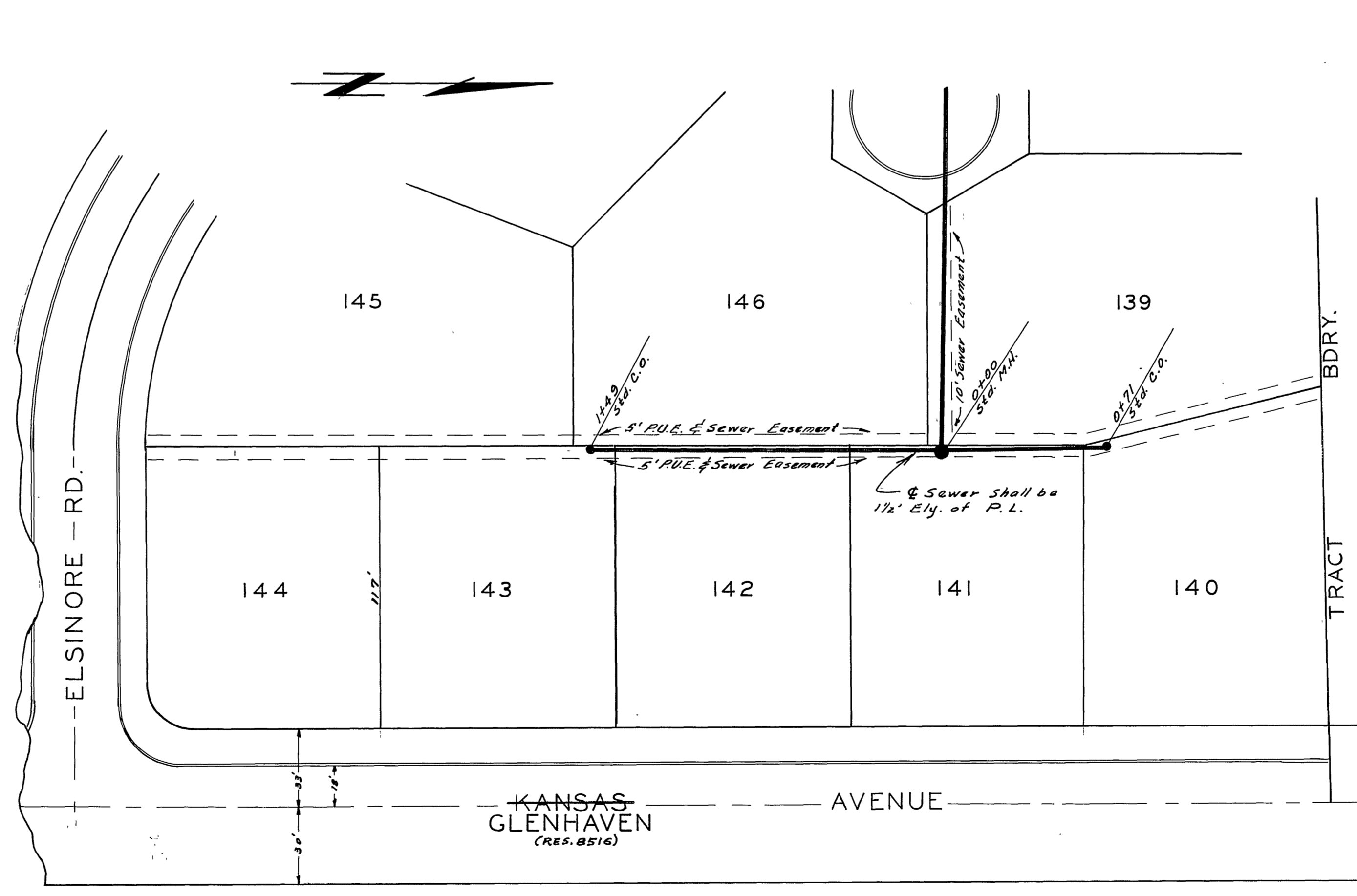
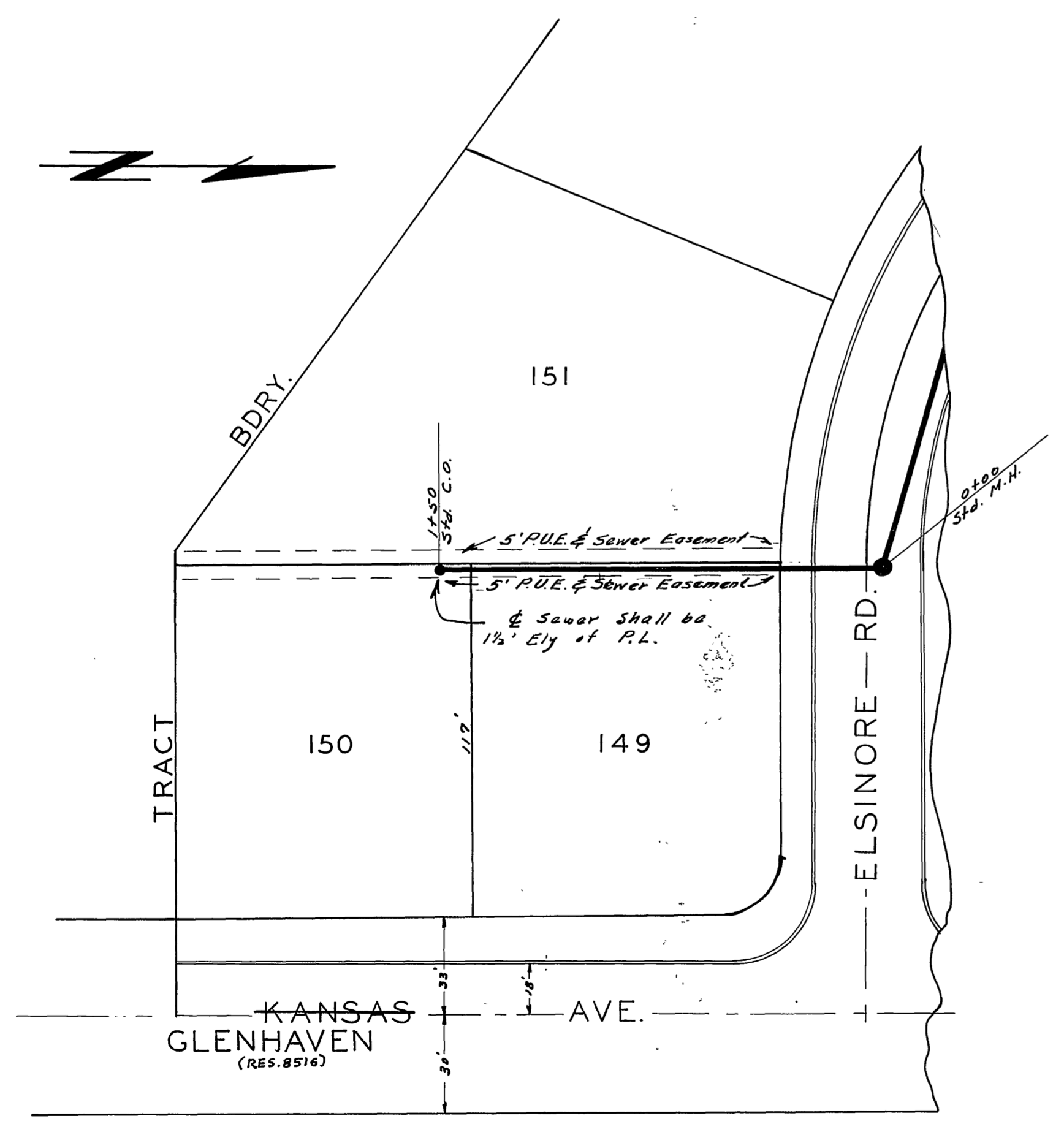
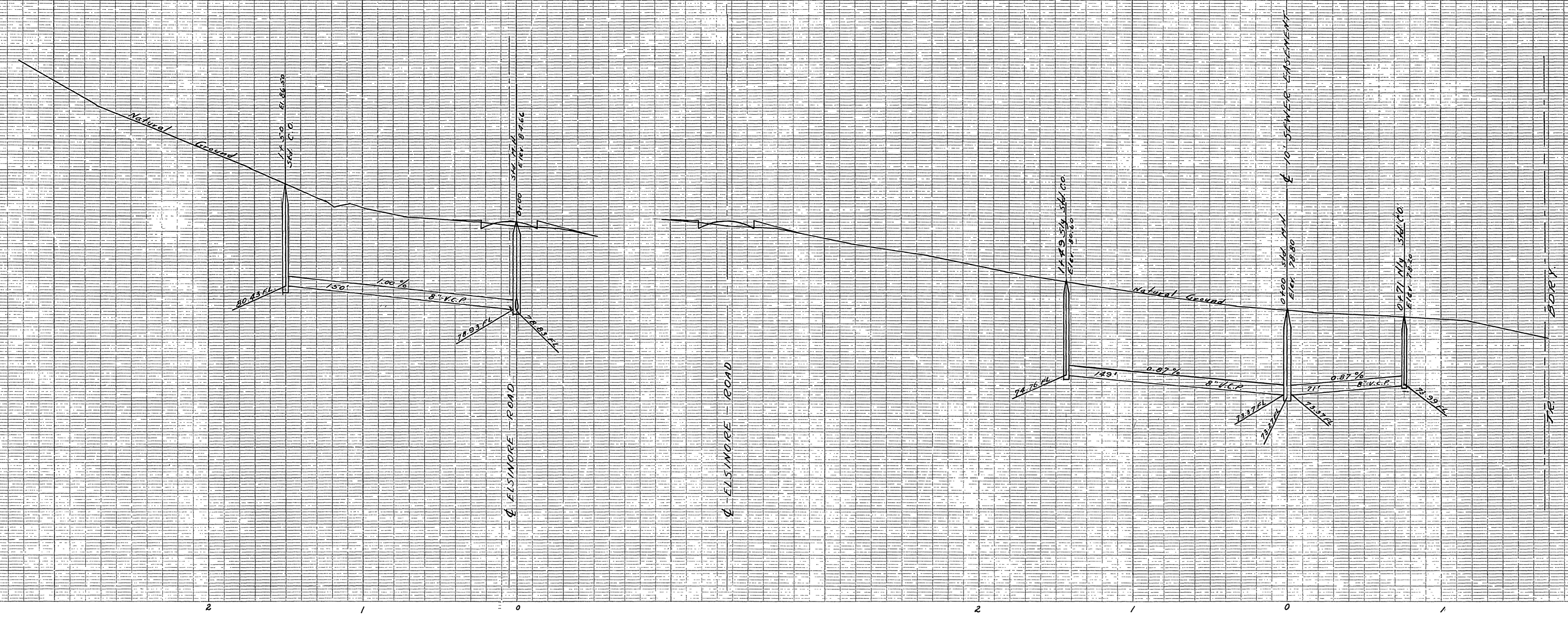
PROPERTY OF  
CITY OF RIVERSIDE  
DEPT. OF PUBLIC WORKS  
ENGINEERING DIVISION

PROPERTY OF  
CITY OF RIVERSIDE  
DEPT. OF PUBLIC WORKS  
ENGINEERING DIVISION

J.F. DAVIDSON-CIVIL ENGINEER  
R.E. No. 962  
RIVERSIDE, CALIFORNIA  
APPROVED BY: *J. Davidson* DATE: 2-8-56  
CITY OF RIVERSIDE, CALIFORNIA  
DEPARTMENT OF PUBLIC WORKS  
SEWER PLAN & PROFILE  
FLINTRIDGE COURT &  
FIELDING ROAD  
VICTORIA GROVES # 7  
HORIZ. SCALE 1" = 40' VERT. SCALE 1" = 4'  
APPROVED BY: *J. Davidson*  
Director of Public Works  
DATE: March 5, 1956  
NO. S-22  
SHEET 1 OF 5

PROPERTY OF  
CITY OF RIVERSIDE  
DEPT. OF PUBLIC WORKS  
ENGINEERING DIVISION

PROPERTY OF  
CITY OF RIVERSIDE  
DEPT. OF PUBLIC WORKS  
ENGINEERING DIVISION



PROPERTY OF  
CITY OF RIVERSIDE  
DEPT. OF PUBLIC WORKS  
ENGINEERING DIVISION

PROPERTY OF  
CITY OF RIVERSIDE  
DEPT. OF PUBLIC WORKS  
ENGINEERING DIVISION

J.F. DAVIDSON - CIVIL ENGINEER  
R.E. No. 862  
RIVERSIDE, CALIFORNIA  
APPROVED BY *J. Davidson* DATE 2-8-76  
CITY OF RIVERSIDE, CALIFORNIA  
DEPARTMENT OF PUBLIC WORKS  
SEWER PLAN & PROFILE  
SEWER EASEMENT

VICTORIA GROVES # 7  
HORIZ. SCALE 1" = 40' VERT. SCALE 1" = 4'

APPROVED BY *J. Davidson*  
CITY OF RIVERSIDE  
DEPT. OF PUBLIC WORKS  
ENGINEERING DIVISION  
DATE March 5, 1976 SHEET 5 OF 5