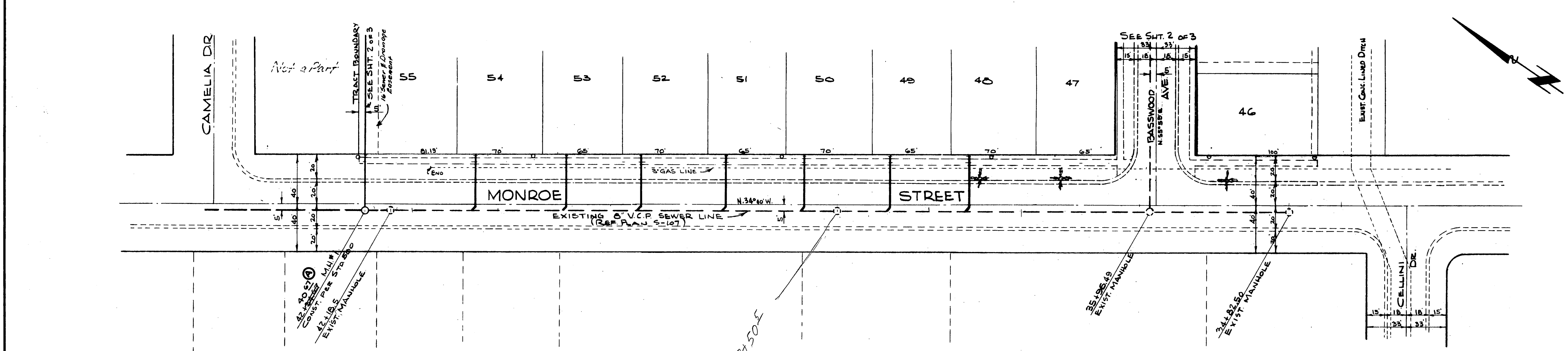


PROFILE	
SURVEYED	BY
NOTE BOOK	DATE
GRADES CHECKED	
PLAN CHECKED	
STATIONING CHECKED	



BENCH MARK
 LP 4 TACK IN SW CORN. RETURN
 CELLINI & MONROE ELEV. 754.72
 (CITY OF RIV. P.B. 614/40)

PLAN	
SURVEYED	BY
NOTE BOOK	DATE
ALIGNMENT CHECKED	
PT. OF W.W. CHECKED	

GENERAL NOTES.
 HOUSE CONNECTION WYES SHALL BE LOCATED IN FIELD EXCEPT WHERE STATIONING IS SHOWN.
 CONSTRUCTION SHALL BE IN ACCORDANCE WITH SPECIFICATIONS OF THE CITY OF RIVERSIDE, DEPARTMENT OF PUBLIC WORKS.

QUANTITY ESTIMATE

8" VITRIFIED CLAY PIPE	1351
4" VITRIFIED CLAY PIPE	1344
8" x 4" WYES	55
MANHOLE STD. 500	6
	2000 L.F.

ALBERT A. WEBB ASSOCIATES
 CIVIL ENGINEERS - RIVERSIDE, CALIFORNIA
 APPROVED *Sam N. Webb* DATE 3/23/60
 RE 5976

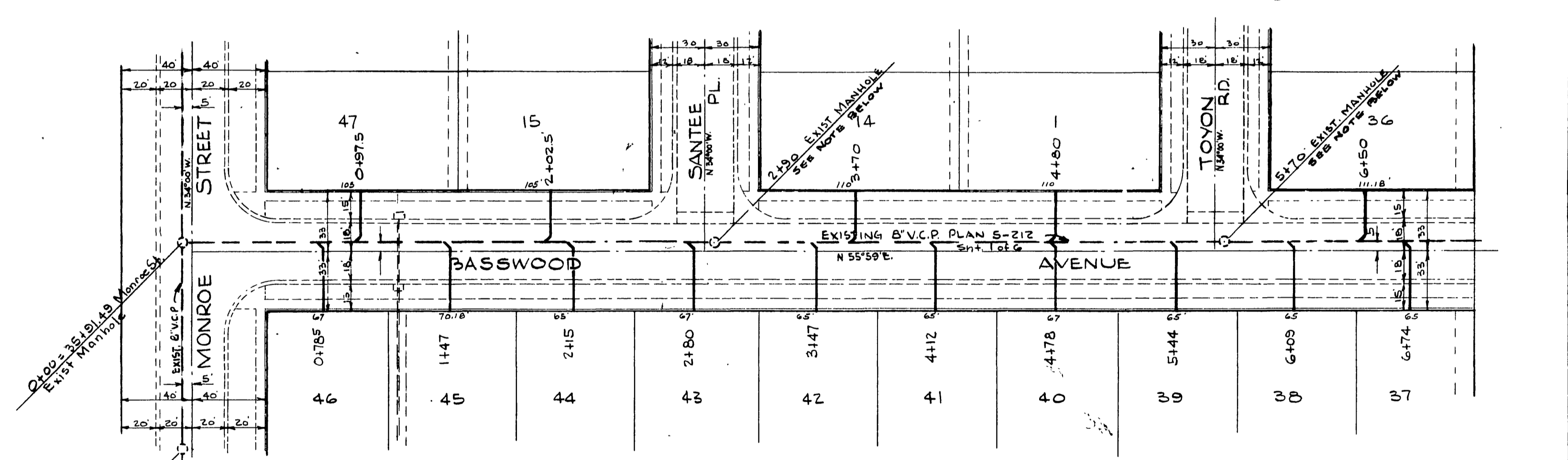
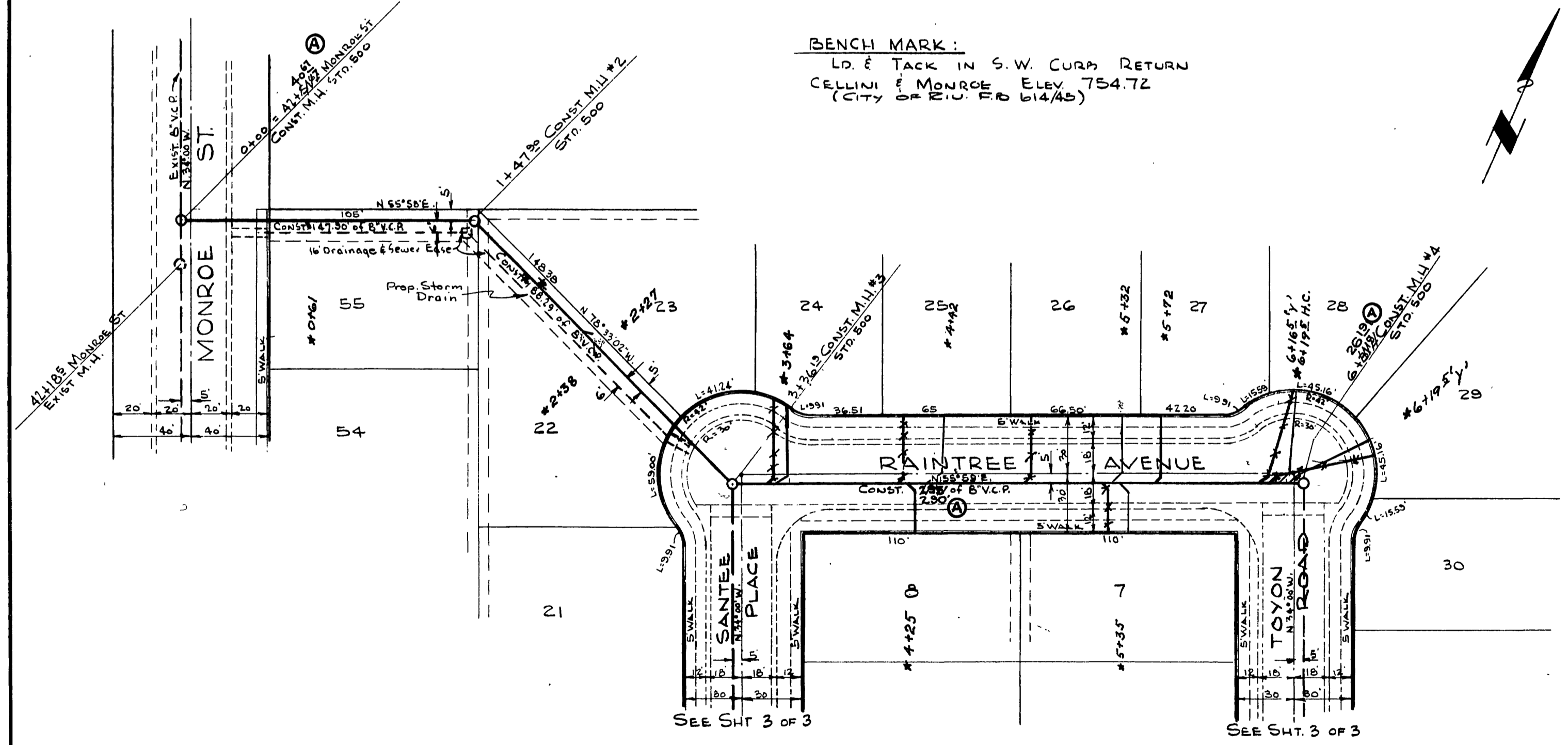
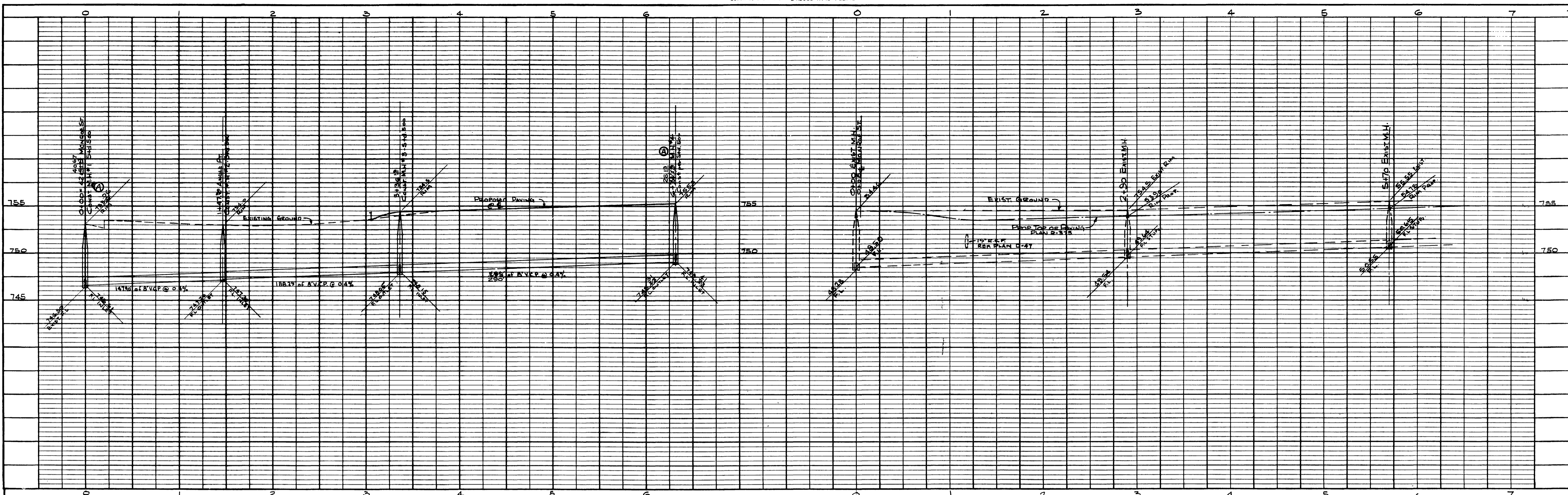
CITY OF RIVERSIDE, CALIFORNIA
DEPARTMENT OF PUBLIC WORKS

SEWER PLAN AND PROFILE
MONROE STREET
LE CHATEAU

REVISION		
MARK	DATE	DESCRIPTION
ⓐ	7-20-60	REVISED STA. & ELEV. ADJUSTED BY WWS 7/21/60

APPROVED BY *Sam N. Webb*
 DIRECTOR OF PUBLIC WORKS
 DATE 4-1-60
 SHEET 1 OF 3

NO. S-222



NOTE: ALL MANHOLES TO BE LOWERED TO MEET PROPOSED TOP OF PAVING

#75 BUILT FEB 11/17/60

PROFILE	
DESIGNED BY	DATE
NOTED BY	
CHECKED BY	
DATE	

PLAN	
DESIGNED BY	DATE
NOTED BY	
CHECKED BY	
DATE	

REVISION		
MARK	DATE	DESCRIPTION
Ⓐ	7-20-60	REVISED STA. ELEV. LENGTH. dwt. OK w/ 7/21/60

ALBERT A. WEBB ASSOCIATES
 CIVIL ENGINEERS RIVERSIDE, CALIFORNIA
 APPROVED *[Signature]* DATE 3/23/60
 11-3876

CITY OF RIVERSIDE, CALIFORNIA
 DEPARTMENT OF PUBLIC WORKS

SEWER PLAN AND PROFILE
 BASSWOOD AVE. & RAIN TREE AVE.
 LE CHATEAU

APPROVED BY *[Signature]*
 DIRECTOR OF PUBLIC WORKS
 DATE 4-1-60
 SHEET 2 OF 3

NO. S-222

