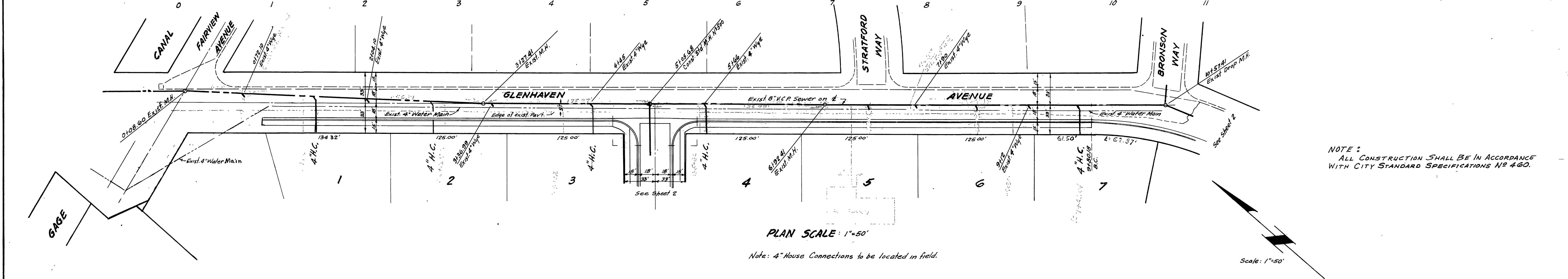


PROFILE SCALE: HORIZ. 1"=50'  
 VERT. 1"=10'

BENCH MARK: 2 on S.E. Corner Glenhaven Ave. bridge over Gage Canal. Elev. 1018.81



PLAN SCALE: 1"=50'

Note: 4" House Connections to be located in field.

NOTE: ALL CONSTRUCTION SHALL BE IN ACCORDANCE WITH CITY STANDARD SPECIFICATIONS NO. 480.

FB. 52

**McKee & Crawley**  
 SURVEYORS AND ENGINEERS  
 APPROVED BY:  
*George O. Crawley* R.E. 9455 Date 11-19-59

CITY OF RIVERSIDE, CALIFORNIA  
 DEPARTMENT OF PUBLIC WORKS

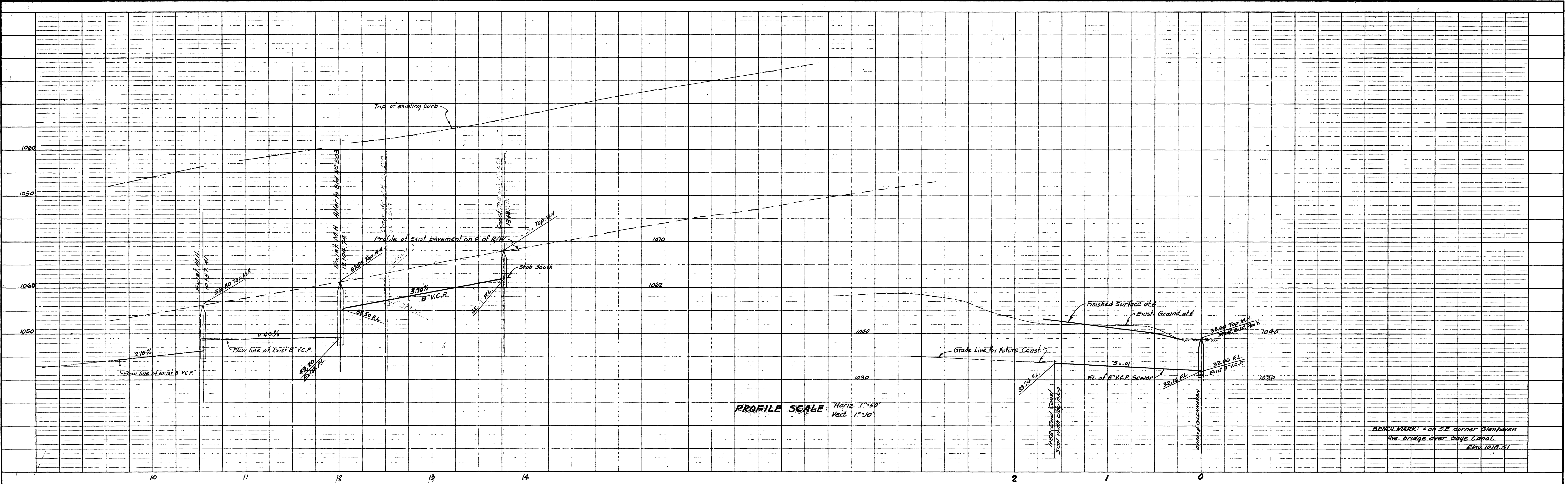
GLENHAVEN KNOLLS  
 UNIT NO. 1  
 SEWER PLANS AND PROFILES  
 GLENHAVEN AVENUE

APPROVED BY: \_\_\_\_\_ PLAN NO.  
 Director of Public Works  
 Date: \_\_\_\_\_ S-226  
 Sheet 1 of 2

PROFILE	
NO.	DATE

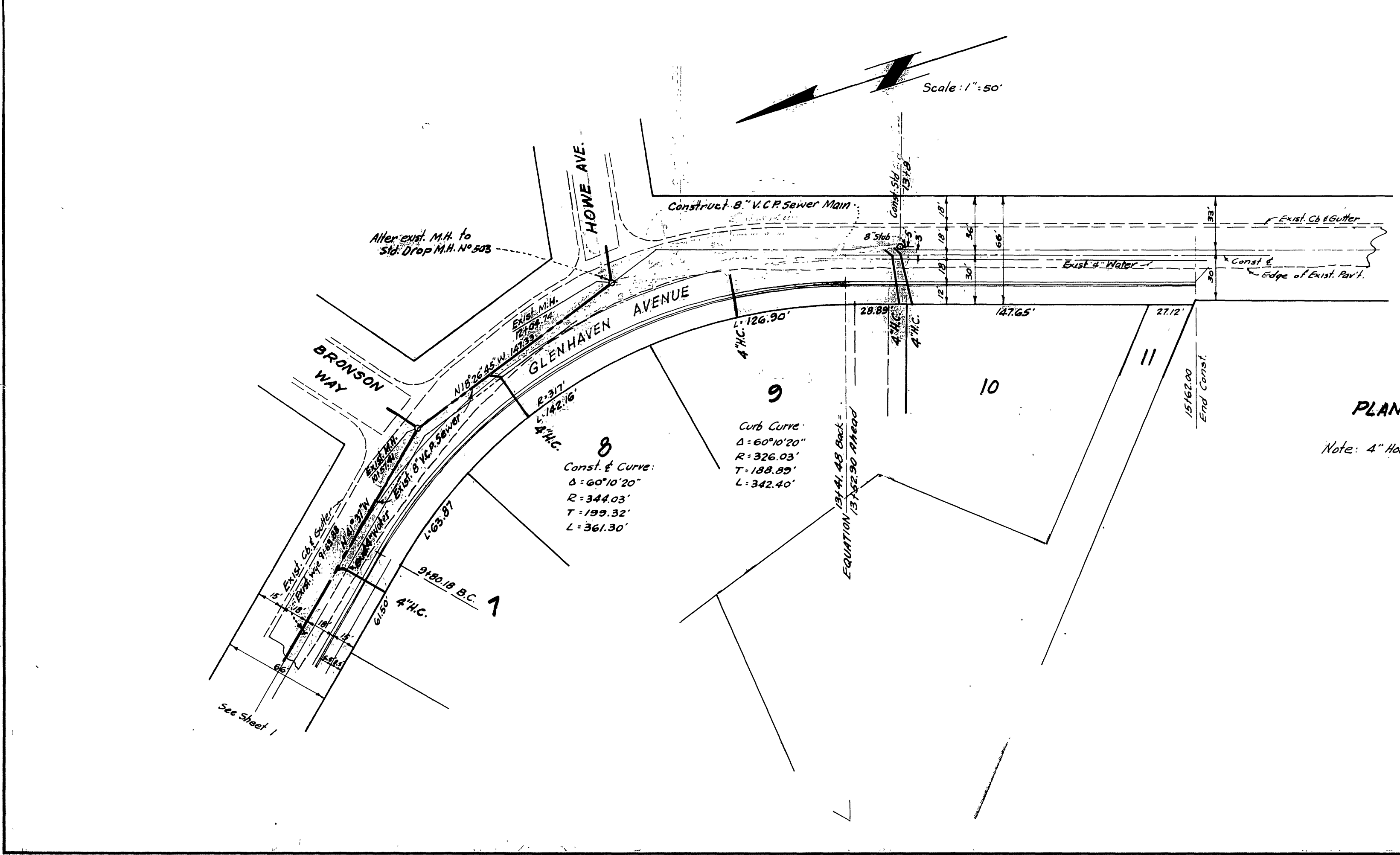
PLAN	
NO.	DATE





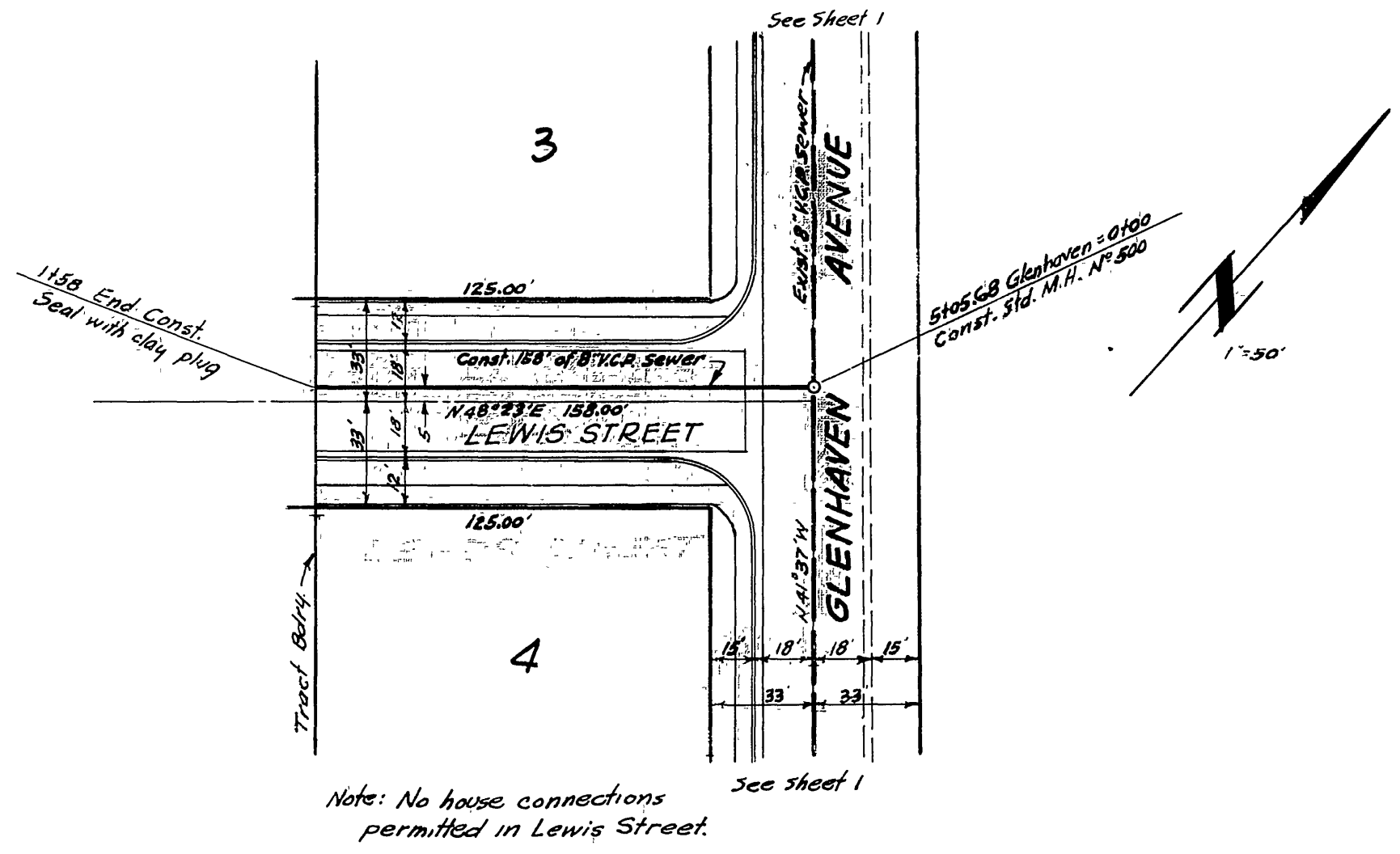
PROFILE SCALE Horiz. 1"=50'  
 Vert. 1"=10'

BEACH MARK: on S.E. corner Glenhaven Ave. bridge over Gage Canal. Elev. 1218.51



PLAN SCALE: 1"=50'

Note: 4" House Connections to be located in field.



**McKEE & CRAWLEY**  
 SURVEYORS AND ENGINEERS  
 APPROVED BY:  
 George O. Crawley, R.E. 9485 Date 11-7-57

**CITY OF RIVERSIDE, CALIFORNIA**  
 DEPARTMENT OF PUBLIC WORKS

**GLENHAVEN KNOLLS**  
 UNIT NO. 1  
**SEWER PLANS AND PROFILES**  
 GLENHAVEN AVE. & LEWIS STREET

APPROVED BY: \_\_\_\_\_ PLAN NO. **S-226**  
 Director of Public Works  
 Date: \_\_\_\_\_ Sheet 2 of 2

PROFILE	
SURVEYED	BY
PLOTTED	DATE
NOTED	
GRADES CHECKED	
REVISIONS	
DATE	
BY	

PLAN	
SURVEYED	BY
PLOTTED	DATE
NOTED	
ALIGNMENT CHECKED	
RT. OF WAY CHECKED	
REVISIONS	
DATE	
BY	