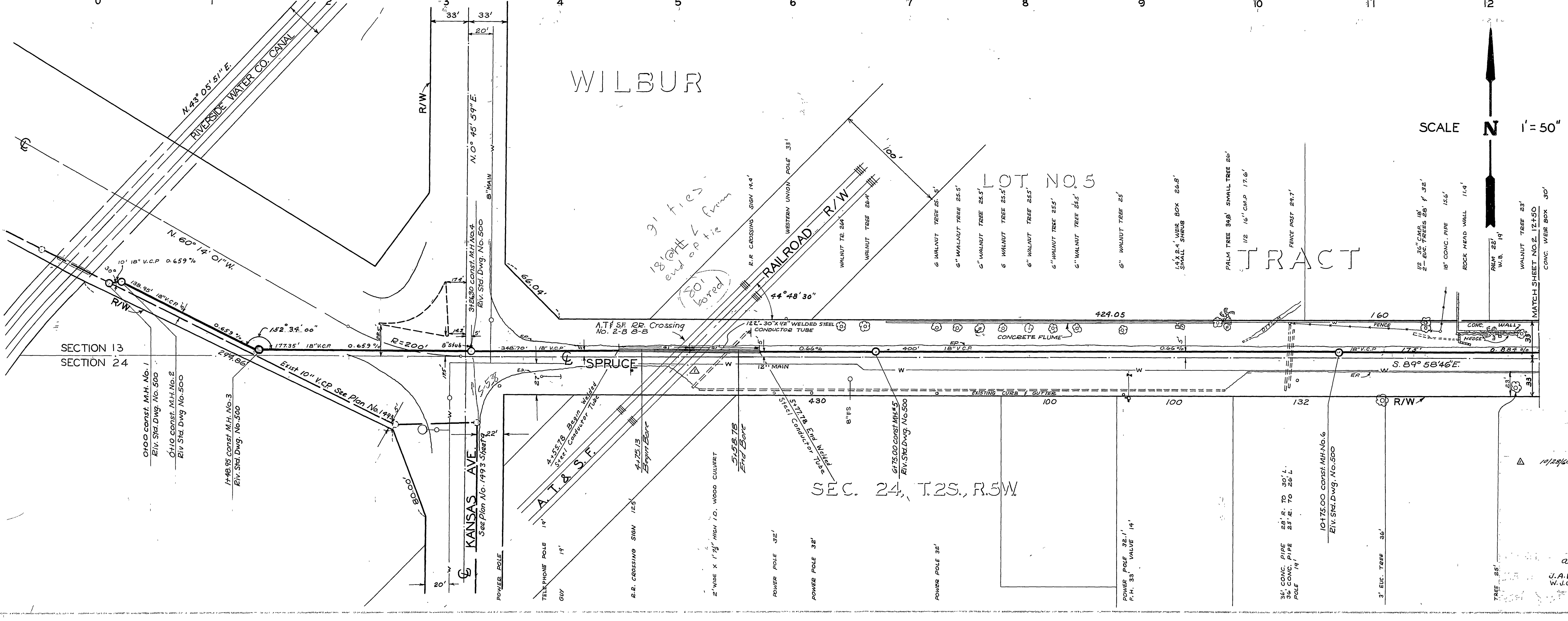


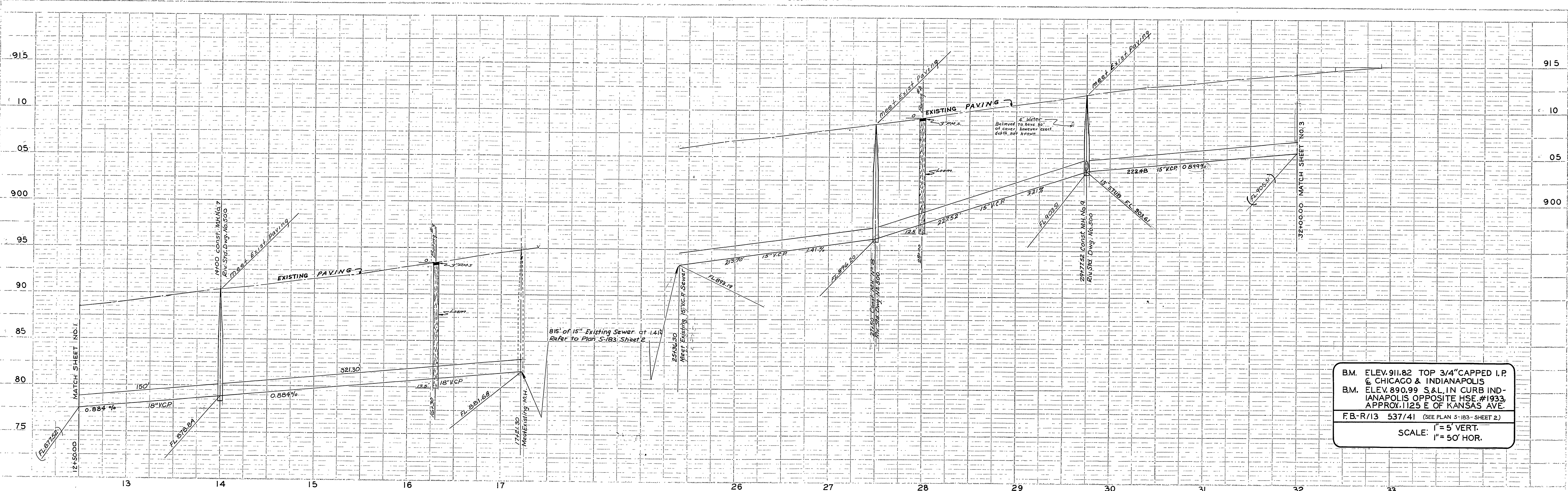
B.M. ELEV 881.13 S&L IN S. ELY. H.W. BR. OVER CANAL APPROX. 300' E. OF LACADENA ON INDIANAPOLIS  
 B.M. ELEV. 883.67 ON NLY. SIDE RIM OF M.H. 50' SLY. OF SPRUCE ON ELY. SIDE OF KANSAS  
 F.B. 530/55 537/33 R/28  
 SCALE: 1" = 5' VERT.  
 1" = 50' HOR.



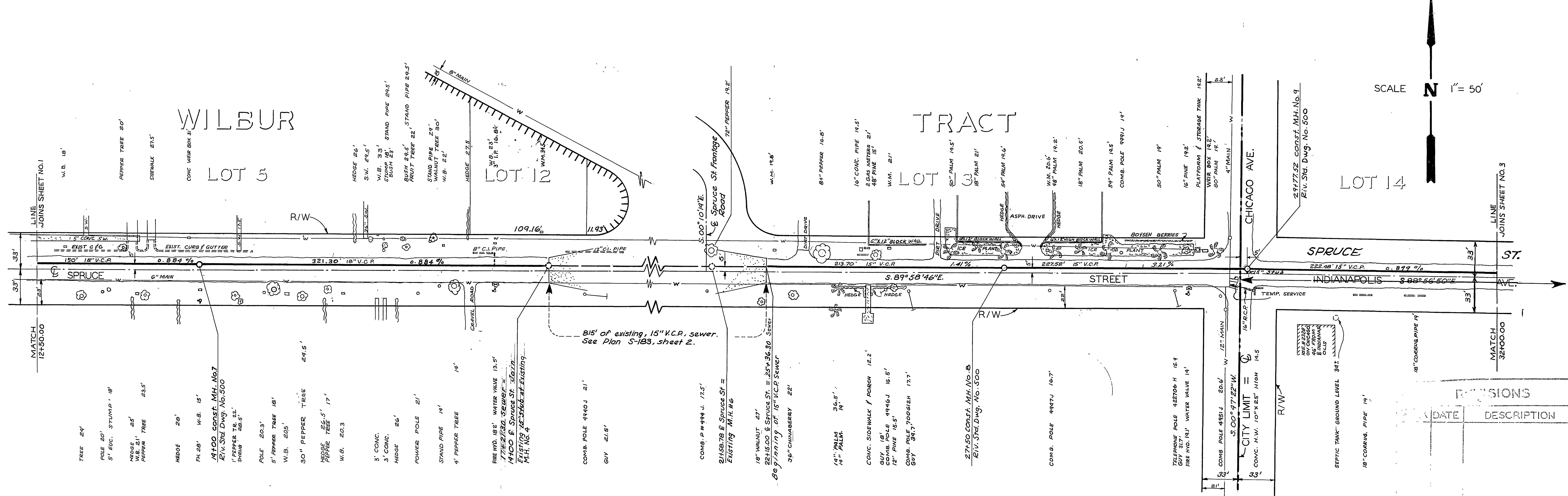
SCALE N 1" = 50'

INDEXED m.d.  
 CITY OF RIVERSIDE, CALIFORNIA  
 DEPARTMENT OF PUBLIC WORKS  
 SPRUCE INDIANAPOLIS TRUNK SEWER  
 RIVERSIDE WATER CO. CANAL TO STA. 12+50  
 APPROVED BY: [Signature]  
 J.A. WIDCH W.L.S.  
 DATE: 7-29-60  
 PROJ. NO. S-228





B.M. ELEV. 911.82 TOP 3/4" CAPPED I.P.  
 @ CHICAGO & INDIANAPOLIS  
 B.M. ELEV. 890.99 S&L IN CURB INDIANAPOLIS  
 OPPOSITE HSE. #1933,  
 APPROX. 1125 E OF KANSAS AVE.  
 F.B.-R/13 537/41 (SEE PLAN S-1B3-SHEET 2)  
 SCALE: 1" = 5' VERT.  
 1" = 50' HOR.



SCALE N 1" = 50'

DATE	DESCRIPTION

CITY OF RIVERSIDE  
 DEPARTMENT OF  
 INDIANAPOLIS  
 TRUNK SEWER

FROM STA. 12+50  
 TO  
 STA. 32+00

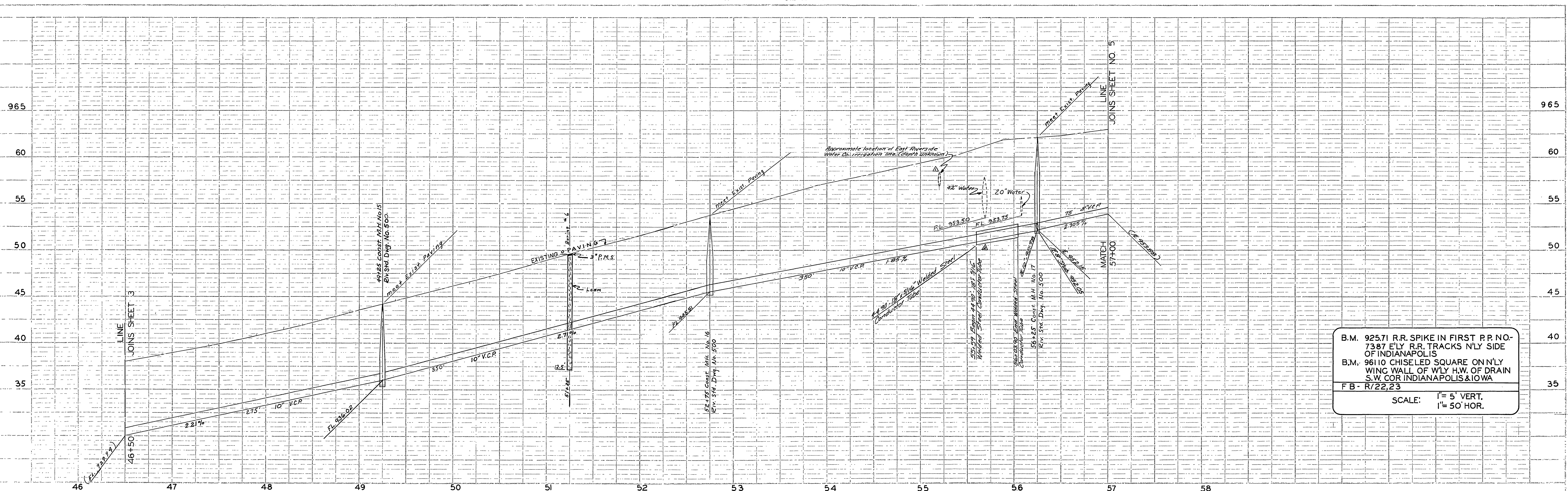
J.A. WLOCH  
 W.U.S.  
 7-29-60

S-228  
 2



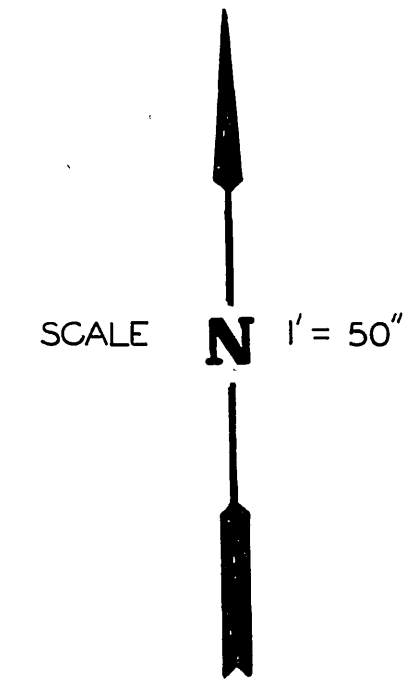
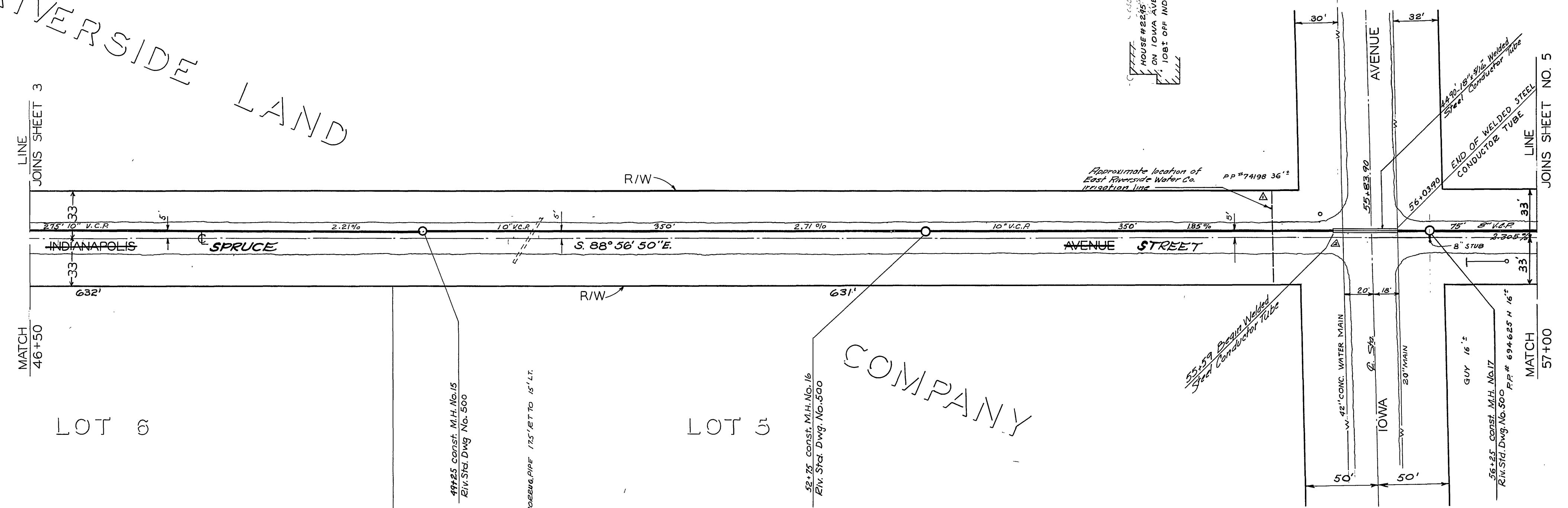






B.M. 925.71 R.R. SPIKE IN FIRST P.P. NO. 7387 E'LY R.R. TRACKS N'LY SIDE OF INDIANAPOLIS  
 B.M. 961.10 CHISELED SQUARE ON N'LY WING WALL OF W'LY H.W. OF DRAIN S.W. COR INDIANAPOLIS & IOWA  
 F B - R/22,23  
 SCALE: 1" = 5' VERT.  
 1" = 50' HOR.

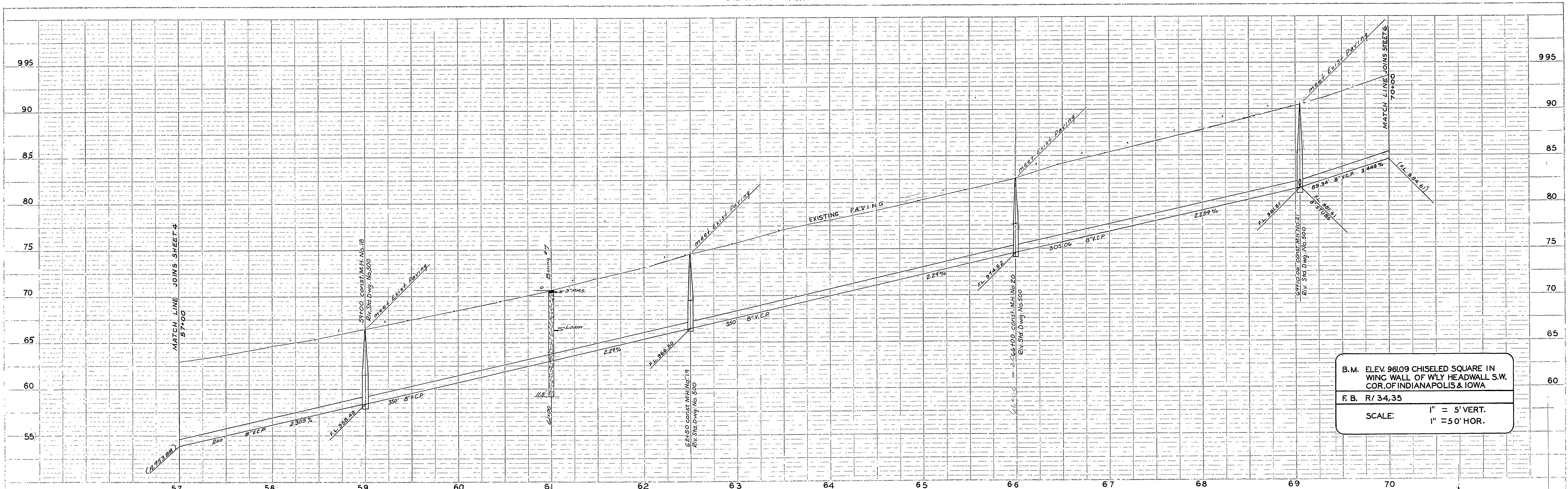
EAST RIVERSIDE LAND



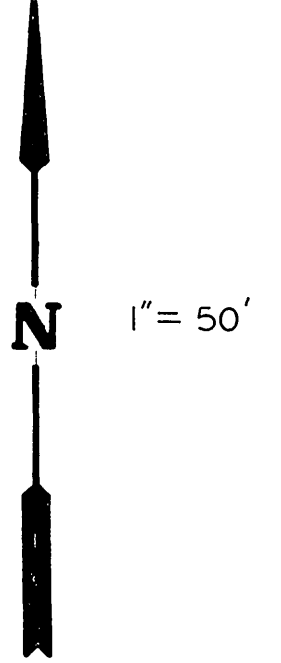
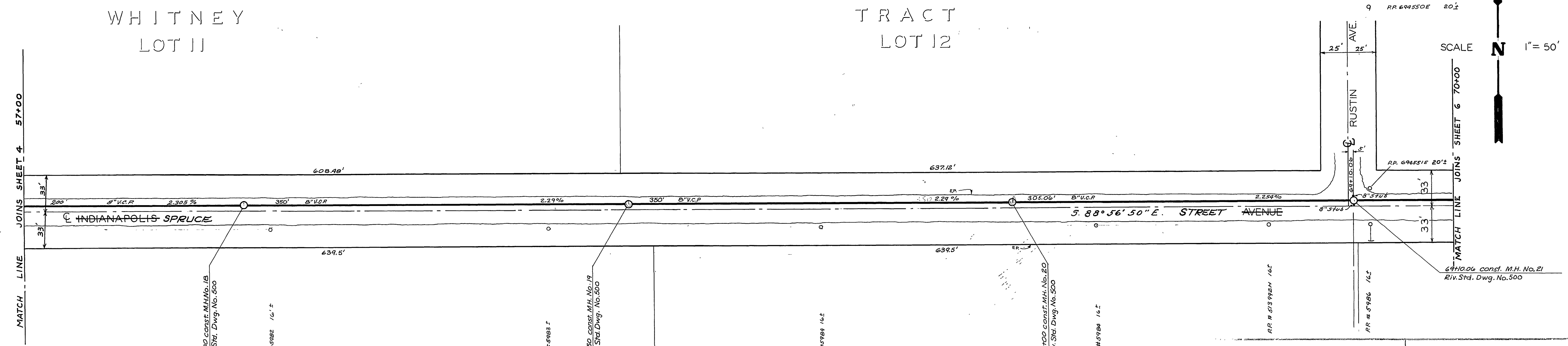
REVISIONS		CITY OF RIVERSIDE CALIFORNIA DEPARTMENT OF PUBLIC WORKS
DATE	DESCRIPTION	
9-16-60	Added wing line (E. Riverside Water Co.) R/W	INDIANAPOLIS TRUNK SEWER
	Approved: <i>[Signature]</i>	
10-20-60	Increased length of conductor tube	FROM STA. 46+50 TO STA. 57+00
	Approved: <i>[Signature]</i>	
DATE	CHECKED BY	APPROVED BY
7-28-60	W.G.	<i>[Signature]</i> DIRECTOR OF PUBLIC WORKS

S-228  
 SHEET 4 OF 6



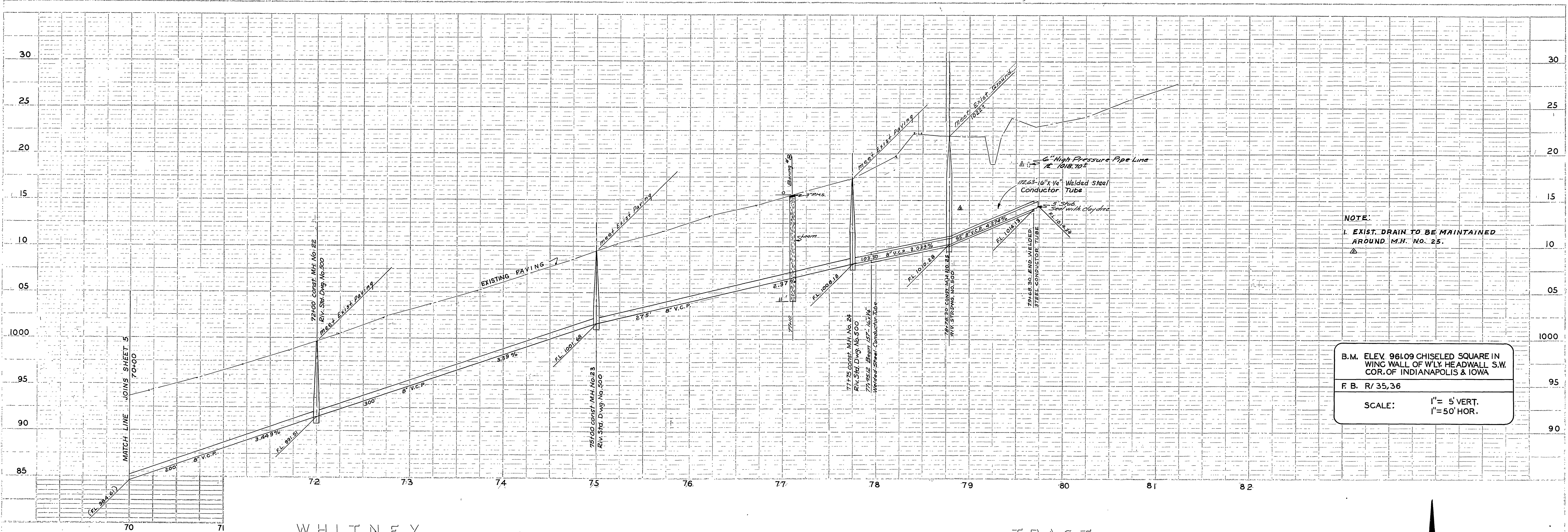


B.M. ELEV. 961.09 CHISELED SQUARE IN WING WALL OF WLY HEADWALL S.W. COR. OF INDIANAPOLIS & IOWA  
 F.B. R/ 34,35  
 SCALE: 1" = 5' VERT.  
 1" = 50' HOR.



REVISIONS			CITY OF RIVERSIDE CALIFORNIA DEPARTMENT OF PUBLIC WORKS	
MARK	DATE	DESCRIPTION		
			INDIANAPOLIS TRUNK SEWER	
			FROM STA. 57+00 TO STA. 70+00	
DESIGNED BY	JA WLOCH	CHECKED BY	W.D.G.	APPROVED BY
				<i>[Signature]</i>
				DIRECTOR OF PUBLIC WORKS
				DATE 7-29-60
				S-228
				SHEET 5 OF 6



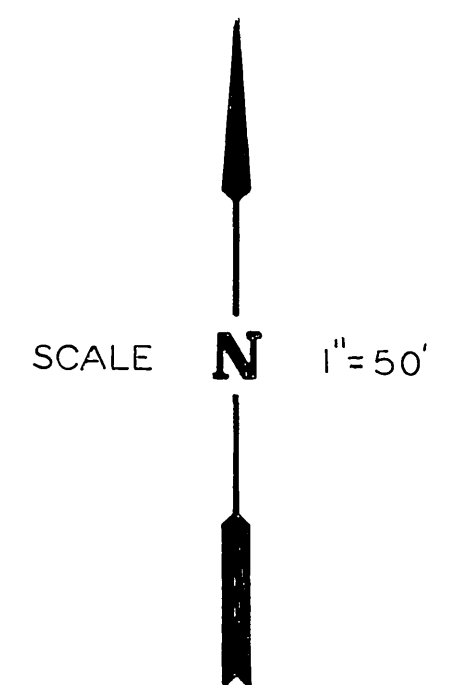
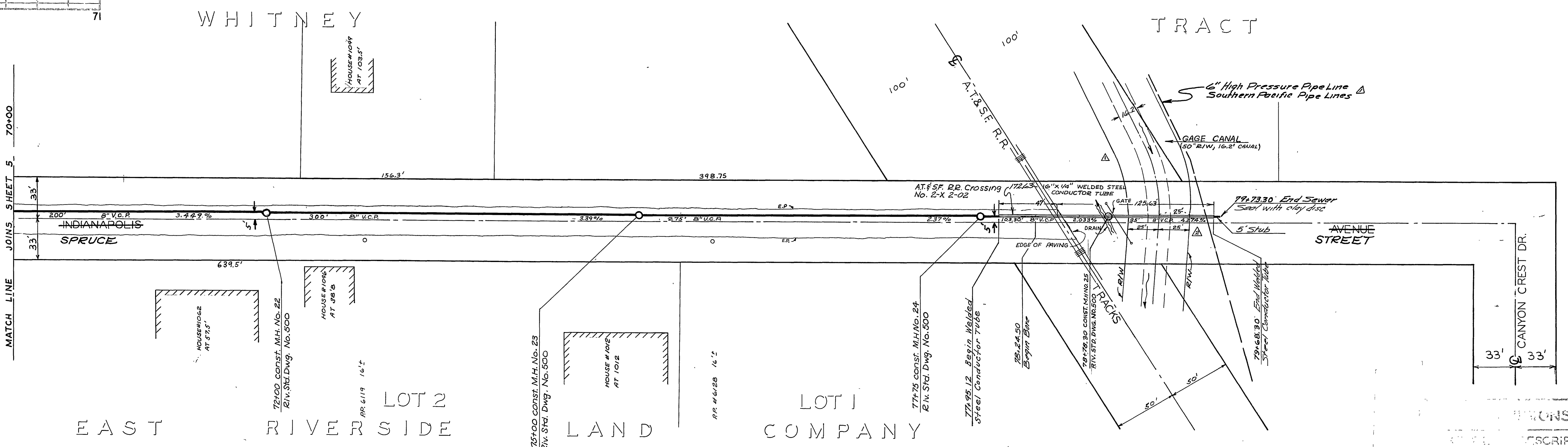


NOTE:  
 1. EXIST. DRAIN TO BE MAINTAINED AROUND M.H. NO. 25.

B.M. ELEV. 961.09 CHISELED SQUARE IN WING WALL OF WLY. HEADWALL S.W. COR. OF INDIANAPOLIS & IOWA

F. B. R/ 35,36

SCALE: 1" = 5' VERT. 1" = 50' HOR.



REVISIONS	CITY OF RIVERSIDE CALIFORNIA DEPARTMENT OF PUBLIC WORKS
1/10/60 Revised Canal Alignment for 6" High Pressure Pipe Line Approved: W. J. W. [Signature] 1/10/60	<b>INDIANAPOLIS TRUNK SEWER</b>  STA. 70+00 TO CANYON CREST DR.
1/28/60 Increased Length of Conductor Tube & Decreased Length of Bone Approved: J. R. [Signature] 1/28/60	
1/11/60 ADDED M.H. NO. 25 & REVISED CHANNEL APPROVED: J. R. [Signature] 1/11/60	
J.A. WLOCH W.J.G. A. R. [Signature]	<b>S-228</b> 7-29-60