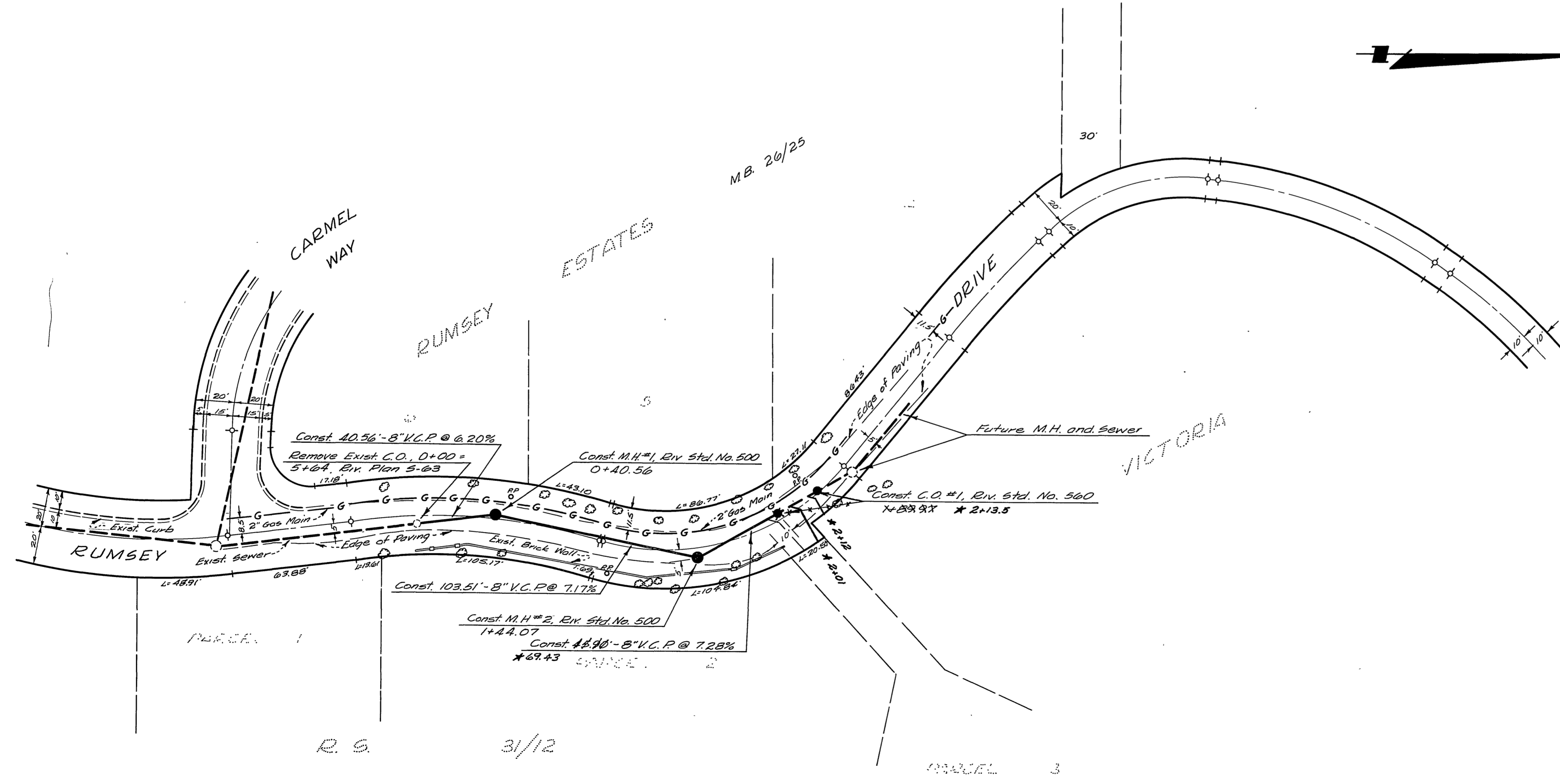


NOTE
 1. Sewer laterals to be located in the field.
 2. All construction shall be in accordance with City Standard Specifications No. 460.



BENCH MARK
 "P.C." in curb return at G.M. cor Central Ave. and Rumsey Drive ELEV. 922.01

REVISION
 Raised sewer grade from M.H. #1 to C.O. #1, May 10, 1960
 Approved by *A.R. Schul* For Director of Public Works
 Date May 10, 1960

J. F. DAVIDSON-CIVIL ENGINEER
 E. NO. 862
 RIVERSIDE, CALIFORNIA
 APPROVED BY *J. F. Davidson* DATE 4-5-60
 CITY OF RIVERSIDE, CALIF.
 DEPARTMENT OF PUBLIC WORKS

SEWER PLAN & PROFILE
RUMSEY DRIVE
 RS 3/12

HORIZ. SCALE 1"=40' 1"=4'
 APPROVED BY *J. F. Davidson* S-229
 Director of Public Works
 Date April 27, 1960 1 1

* Re-Built 7/11/60 R. Mitchell