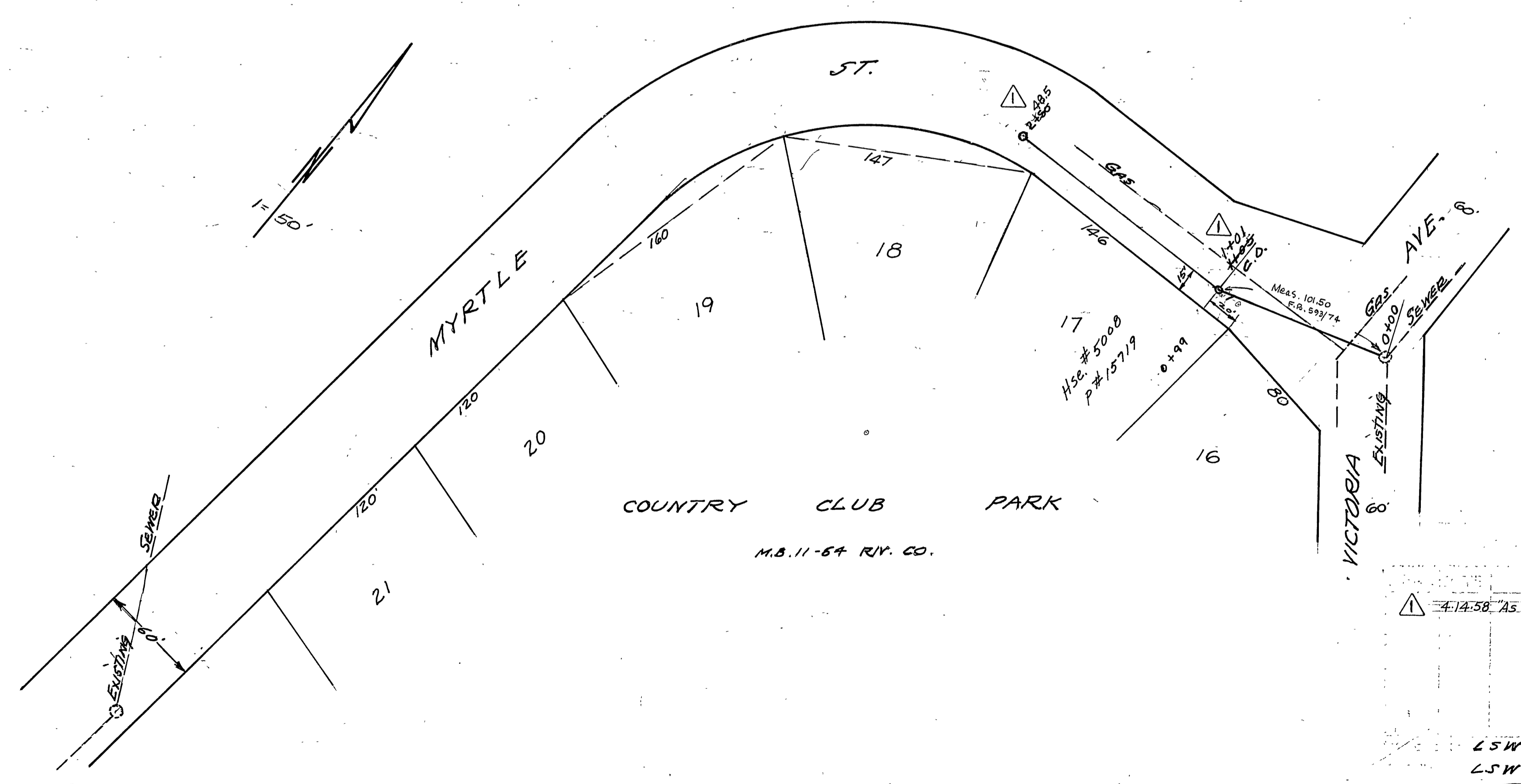


A.M. 5-L in walk W. Side
So. End Victoria Bridge
Elev. 903.03
F.B. 593-3



PROPOSED SEWER IN
MYRTLE STREET
WEST OF
VICTORIA AVENUE

LSW
LSW
See P. Whiston J. M. Martin
Hall M. Selt
NO. 5-23
3-7-86 1 1