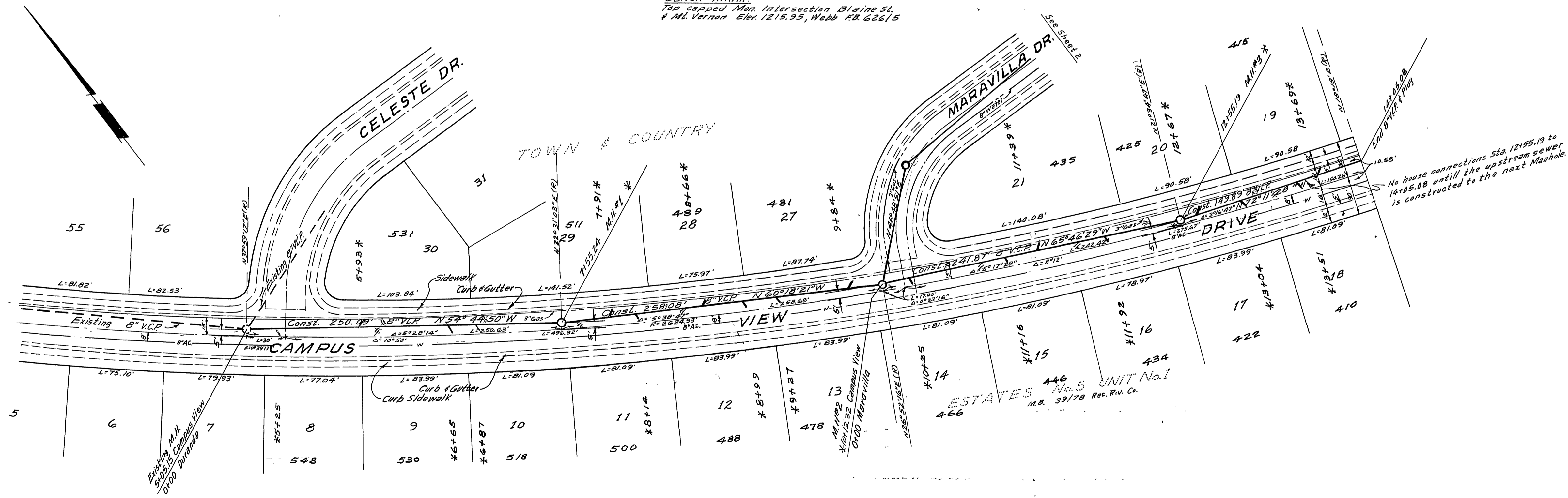




BENCH MARK  
Top capped Man Intersection Blaine St.  
+ 41.7600 Elev. 1215.95, West 18 62615



- GENERAL NOTES
- Construction shall be in accordance with the City of Riverside, Department of Public Works, Standard Specifications No. 461 and Standard Drawings.
  - It shall be the responsibility of the contractor to clear the right of way in accordance with the provisions of the law as it affects each utility including irrigation lines and appurtenances and at no cost to the City.
  - Joints in vitrified clay pipe shall conform to ASTM Standard C-425-60T, or the latest revision thereof.
  - Pipe shall be bedded per Case I, Standard Drawing No. 452, unless otherwise specified on plan.
  - Location of trees and laterals to be defined in the field.
  - All stubs and laterals to be constructed in accordance with Standard Drawing No. 562. Stubs shall be plugged and capped.
  - Manhole frames and covers to be set to existing pavement grade.
  - Laterals to be 4\"/>

QUANTITY ESTIMATE

8\"/>	1,291	L.F.
4\"/>		L.F.
4\"/>	23	Ea.
Manhole Standard No. 500	5	Ea.
Pavement Replacement	3,460	SF.

\* AS BUILT 10-10-67 R.W.C.

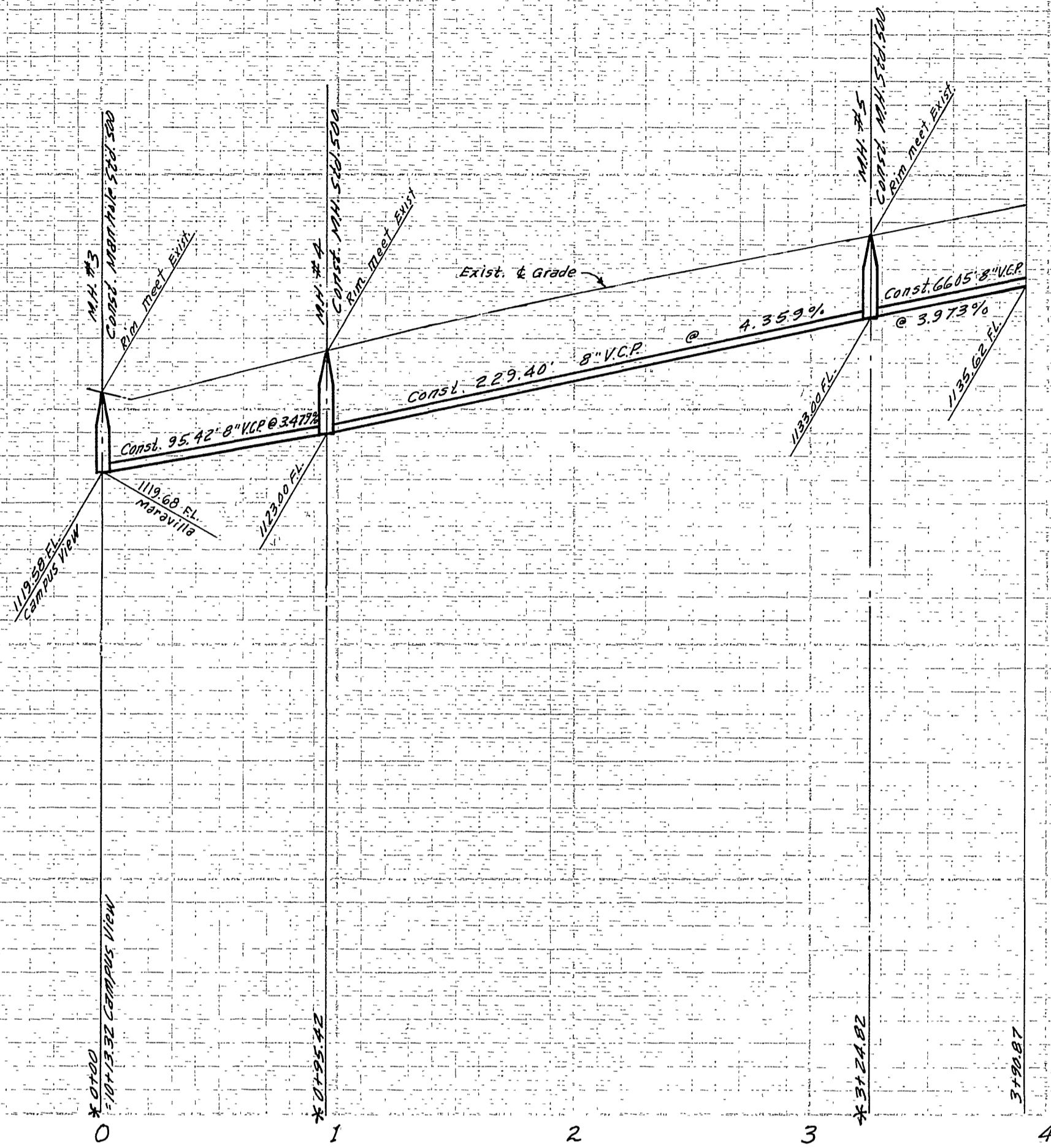
ALBERT A. WEBB ASSOCIATES CIVIL ENGINEERS RIVERSIDE, CALIFORNIA APPROVED BY: <i>Emil N. Webb</i> DATE: 5/10/66 R.E. No. 3876	CITY OF RIVERSIDE, CALIFORNIA DEPARTMENT OF PUBLIC WORKS APPROVED BY: <i>[Signature]</i> OFFICE ENGINEER: <i>[Signature]</i> DATE: 6-8-66 PARK DEPARTMENT TRAFFIC DIVISION ASSISTANT CITY ENGINEER: <i>[Signature]</i> DATE: 6-14-67	SEWER PLAN & PROFILE <b>CAMPUS VIEW DRIVE</b> TRACT 2881 <b>SEWER EXTENSION</b>	PROJECT NO. <b>S-231-A</b> SHEET 1 OF 2
		W.O. 66-84 FOR: F.B. 626 DESIGNED BY: DRAWN BY: <i>DEL</i> CHECKED BY: <i>REC</i>	

1125

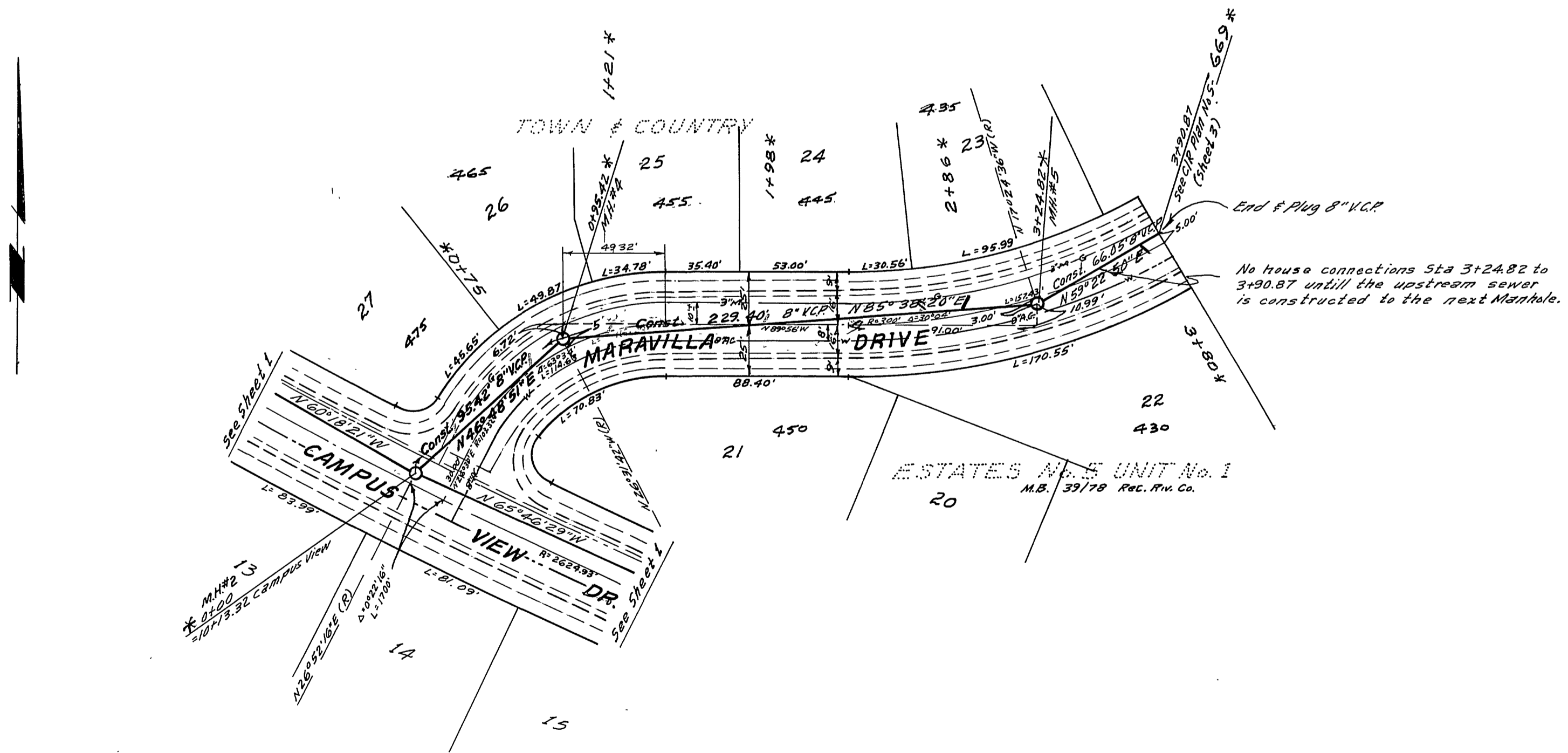
1105

1145

1125



BENCH MARK:  
Top capped Man. Intersection Blaine St.  
& Mt. Vernon Elev. 1215.95, Webb F.R. 62645



\*AS BUILT 10-10-67 K.S.

ALBERT A. WEBB ASSOCIATES CIVIL ENGINEERS RIVERSIDE, CALIFORNIA APPROVED BY <i>[Signature]</i> DATE 5/10/66 R.E. No. 2276		CITY OF RIVERSIDE, CALIFORNIA DEPARTMENT OF PUBLIC WORKS APPROVED BY <i>[Signature]</i> DATE 6-14-67 DIRECTOR OF PUBLIC WORKS		SEWER PLAN & PROFILE <b>MARAVILLA DRIVE</b> <b>TRACT 2881</b> <b>SEWER EXTENSION</b>	PROJECT NO. <b>S-231-A</b> SHEET <u>2</u> OF <u>2</u> FILE NO. 66-84-B
W.O. 66-84 FOR:	F.B. 626	DESIGNED BY:	DRAWN BY: BEL	CHECKED BY: REC	DATE: 6-14-67