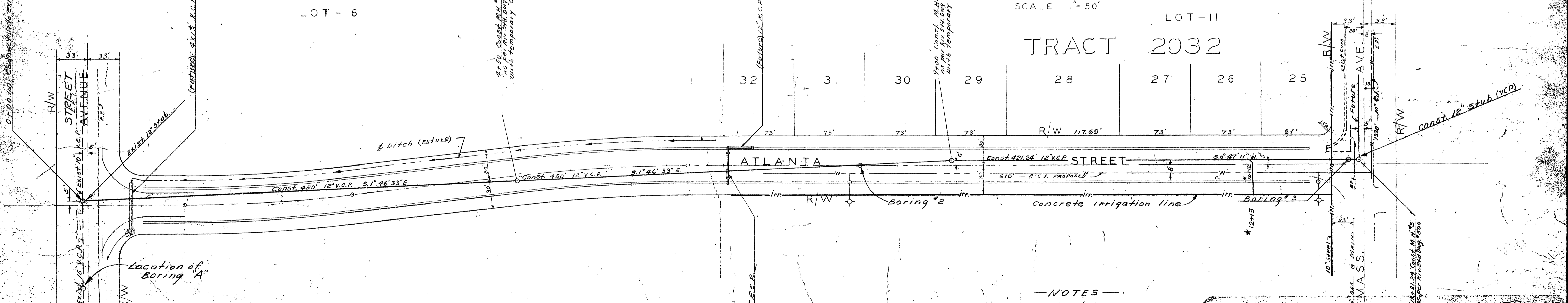


DATE	
BY	
STRUCTURE NO. (N.Y.N.C.R.C.)	
CONTRACT NO.	
PROJECT	
NOTES BOOK	
SHEET NO.	

B.M. Chis. D on W. Headwall SW
 21.463.75
 F.B. - S/38-39
 SCALES - HOR. 1" = 50'
 VERT. 1" = 5'

EAST RIVERSIDE LAND CO. TRACT 2032



- NOTES
- All construction to be in accordance with City of Riverside Standard Specifications No. 460.
 - All street improvements on Atlanta are future construction.
 - Manhole covers in City of Riverside Std. Div. No. 5. The Contractor shall furnish small manholes, sag pipe manhole covers, silent knifflers, as manufactured by the Allumura Foundry in Allamogosa, California, and install a cover at M.H. #3.
 - Manhole covers by others; setting manhole covers of M.H. #2 to meet final grade of new paving will be done by others.
 - This Contractor will construct M.H. #2 to temporary top and cover with boiler plate per Section 710, Riverside Standard Specification.
 - Contractor shall locate 10" steel irrigation line before excavating at Sta. 12+94±

REVISIONS		CITY OF RIVERSIDE, CALIFORNIA DEPARTMENT OF PUBLIC WORKS	
MARK	DATE	DESCRIPTION	
DESIGNED BY H.J.K.		CHECKED BY C.G.W.	APPROVED BY <i>Marked</i> DIRECTOR OF PUBLIC WORKS
DRAWN BY H.R.C.		RECOMMENDED BY <i>H.R.C.</i> ASSISTANT CITY ENGINEER	DATE 11-18-60
			S-239 SHEET 1 OF 1