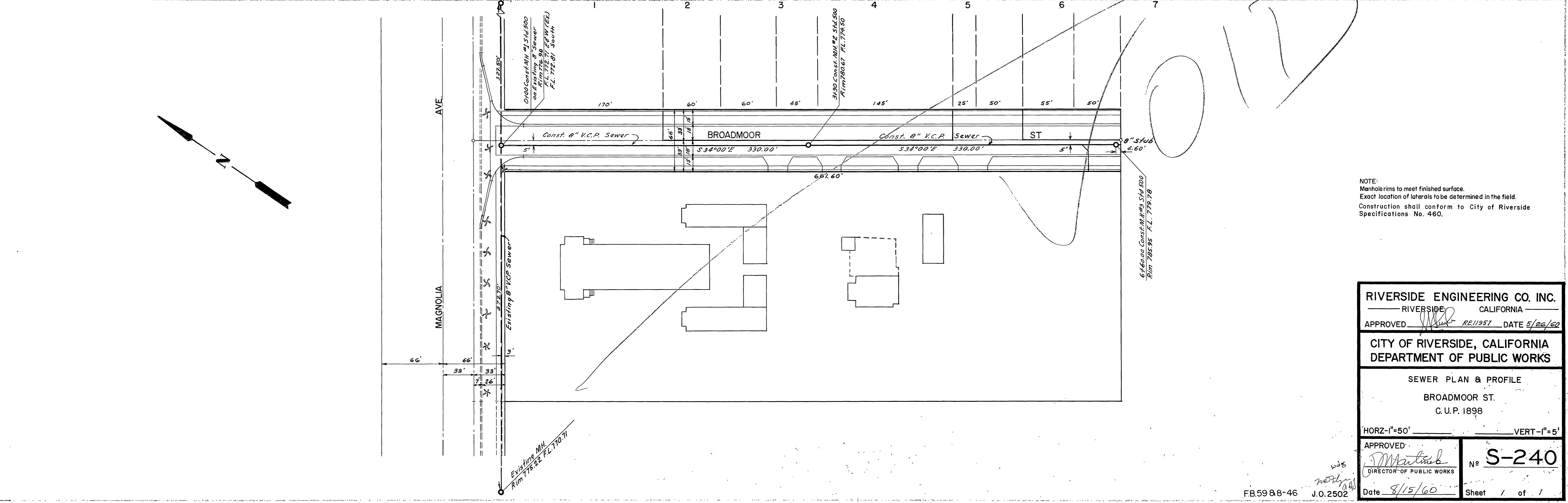


PROFILE SHEET

DATE	5/26/60
BY	J.M.
CHECKED	
SCALE	1"=50'
PROJECT	
SHEET NO.	1 of 1



B.M. PK. Nail in east curb return of center
curb at Magnolia & Monroe.
ELEV. = 779.84

NOTE:
Manholes to meet finished surface.
Exact location of laterals to be determined in the field.
Construction shall conform to City of Riverside
Specifications No. 460.

RIVERSIDE ENGINEERING CO. INC.	
RIVERSIDE CALIFORNIA	
APPROVED	RE 11957 DATE 5/26/60
CITY OF RIVERSIDE, CALIFORNIA DEPARTMENT OF PUBLIC WORKS	
SEWER PLAN & PROFILE	
BROADMOOR ST. C. U. P. 1898	
HORZ-1"=50'	VERT-1"=5'
APPROVED	Nº S-240
DATE 8/15/60	SHEET 1 of 1

FB59 88-46 J.O.2502