

**CITY OF**  
**RIVERSIDE , CALIFORNIA**  
**VICTORIA TRUNK SEWER**  
**EXTENSION**

**1960**

MAYOR

EDWARD V. DALES

COUNCIL MEMBERS

JOHN H. BACKSTRAND  
WILLIAM H. BONNETT  
NANCY C. O'NEILL

JOHN B. BERGIN  
CHARLES H. JOHNSON  
ORVILLE G. SANSONE

ULRICH L. VORIS

CITY MANAGER

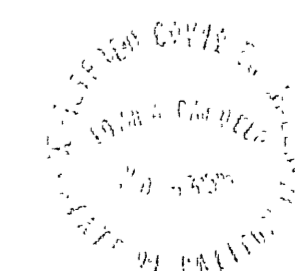
H. K. HUNTER

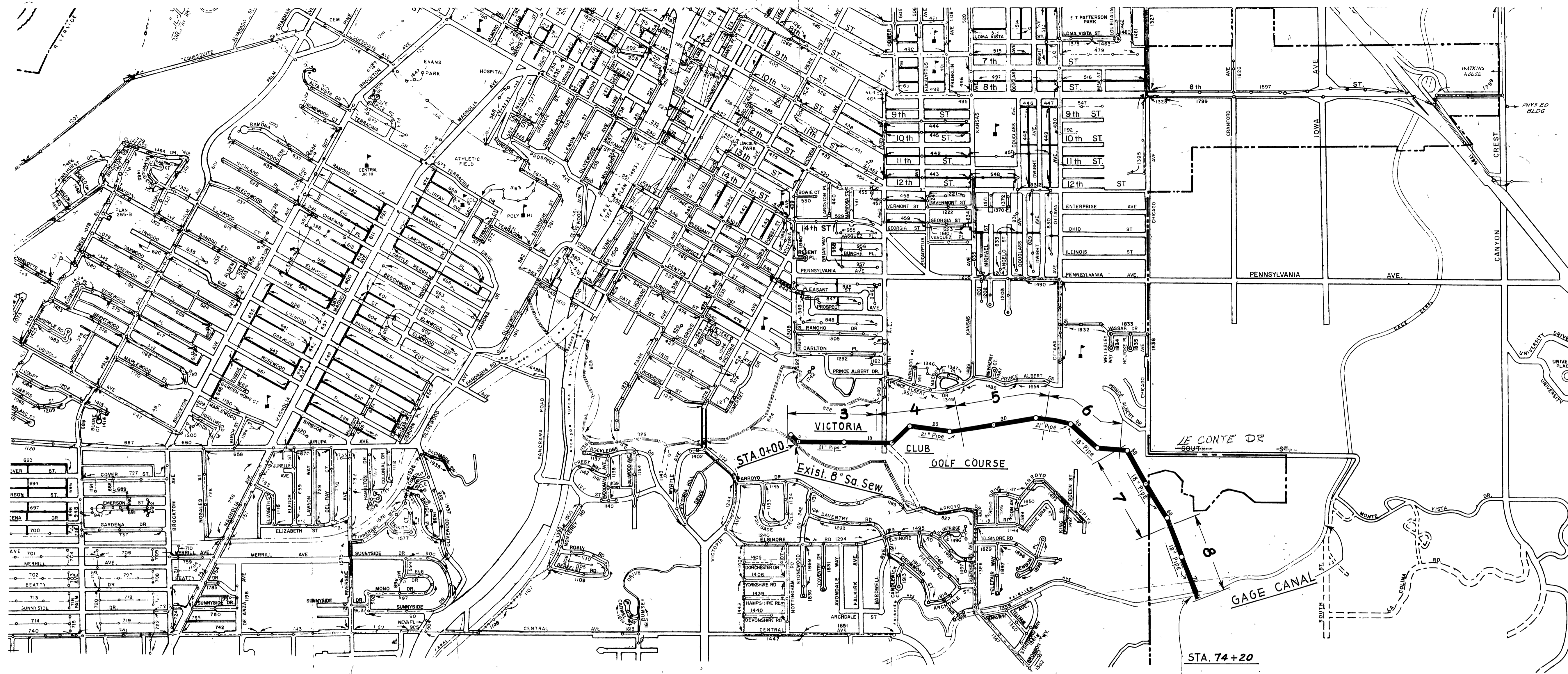
DIRECTOR OF PUBLIC WORKS

AND CITY ENGINEER

JAMES F. MARTINEK

JOHN A. CAROLLO  
*Consulting Engineers*  
PHOENIX , ARIZONA





**LEGEND**

- =====  
O  
===== PROPOSED SANITARY TRUNK SEWER
- =====  
O  
===== STANDARD MANHOLE ON PROPOSED SAN. TRUNK SEWER
- O  
----- EXISTING SANITARY SEWER
- O  
----- EXISTING MANHOLE ON SAN. SEWER
- T  
----- TELEPHONE UNDERGROUND CABLE
- W  
----- WATER LINE
- V  
----- IRRIGATION PIPE WITH VALVE AND BOX
- ----- CENTER - OR SURVEY LINE
- ----- PROPERTY - OR SECTION LINE
- X  
----- FENCE LINE
- ----- GROUND PROFILE

SHEET NO.

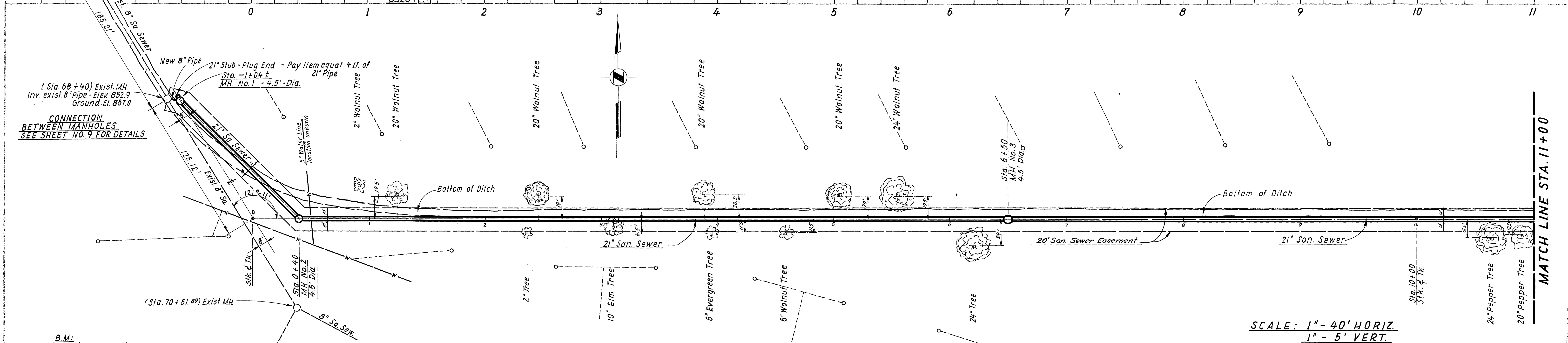
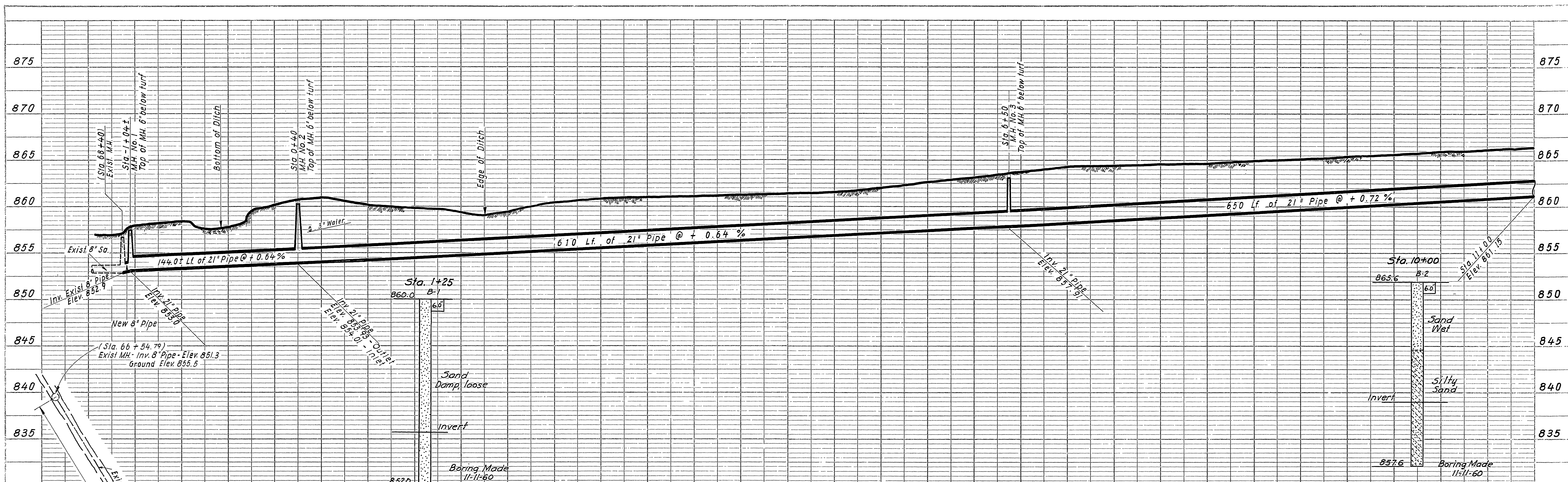
**INDEX**

- 1 TITLE SHEET
- 2 KEY MAP - INDEX - LEGEND
- 3 PLAN & PROFILE - STA. 1+04+20 TO STA. 11+00
- 4 PLAN & PROFILE - STA. 11+00 TO STA. 23+80
- 5 PLAN & PROFILE - STA. 23+80 TO STA. 36+00
- 6 PLAN & PROFILE - STA. 36+00 TO STA. 48+80
- 7 PLAN & PROFILE - STA. 48+80 TO STA. 61+60
- 8 PLAN & PROFILE - STA. 61+60 TO STA. 74+20
- 9 DETAILS

APPROX. SCALE



REVISIONS		JOHN A. CAROLLO CONSULTING ENGINEERS PHOENIX, ARIZONA	
MARK	DATE	DESCRIPTION	CITY OF RIVERSIDE, CALIFORNIA DEPARTMENT OF PUBLIC WORKS
			<b>VICTORIA TRUNK SEWER EXTENSION</b>
			KEY MAP - INDEX - LEGEND
DESIGNED BY: G.C.W.	CHECKED BY: G.C.W.	APPROVED BY: <i>[Signature]</i>	<b>S - 241</b>
DRAWN BY: H.J.G.	RECOMMENDED BY: <i>[Signature]</i>	DIRECTOR OF PUBLIC WORKS	<b>SHEET 2 OF 9</b>
	ASSISTANT CITY ENGINEER	DATE: 4-7-41	



SCALE: 1" = 40' HORIZ.  
1" = 5' VERT.

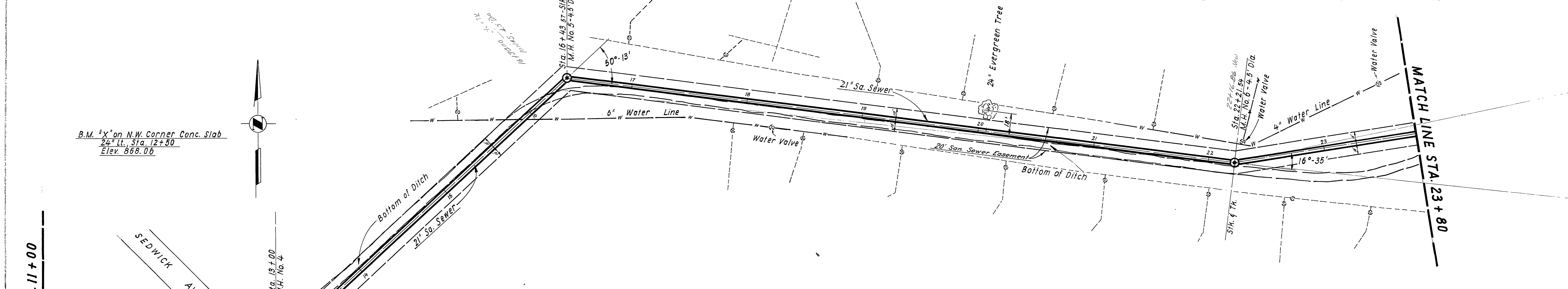
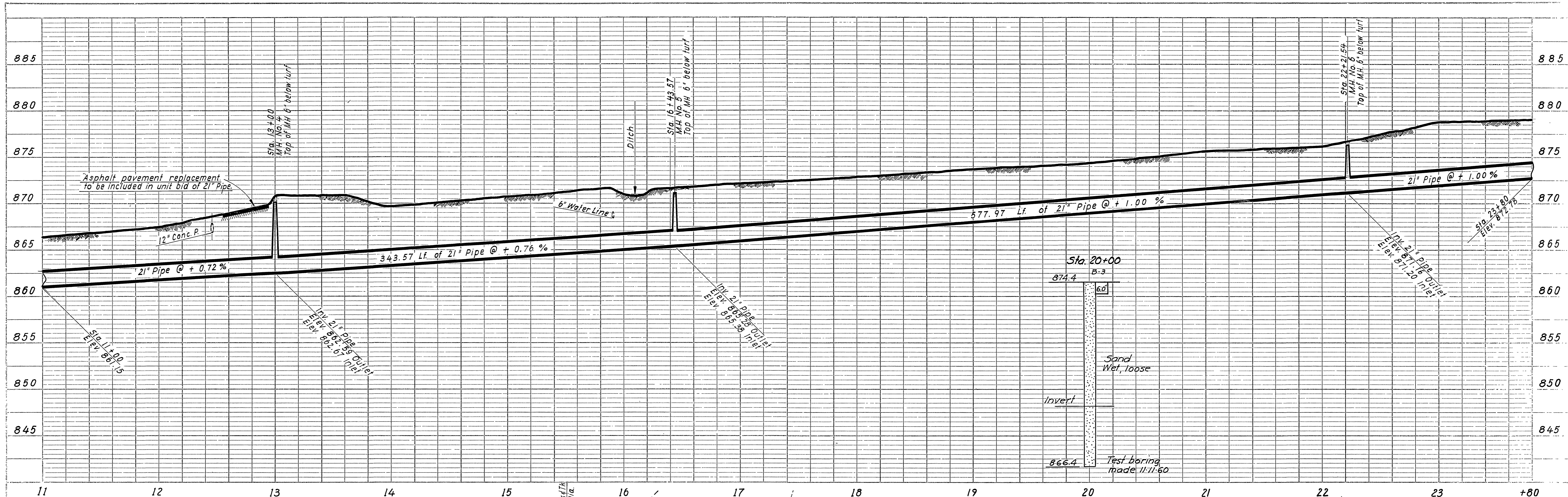
REVISIONS		DESCRIPTION	JOHN A. CAROLLO CONSULTING ENGINEERS PHOENIX, ARIZONA CITY OF RIVERSIDE, CALIFORNIA DEPARTMENT OF PUBLIC WORKS
MARK	DATE		
	7-5-61	AS BUILT H.R.C.	<b>VICTORIA TRUNK SEWER            EXTENSION</b> PLAN & PROFILE STA. 1+04± TO STA. 11+00
DESIGNED BY:	4-13-61	U.S.G.	
DRAWN BY:	4-13-61	U.S.G.	CHECKED BY: G.C.M. APPROVED BY: <i>M. J. ...</i> DIRECTOR OF PUBLIC WORKS
RECOMMENDED BY:	4-17-61	W.D.S.	ASSISTANT CITY ENGINEER DATE: 4-17-61

S-241  
SHEET 3 OF 9

B.M.:  
Nail in Eucalyptus Tree  
33' west of existing M.H. Sta. 66+54.79  
Elev. 856.82

CONNECTION  
BETWEEN MANHOLES  
SEE SHEET NO. 9 FOR DETAILS

MATCH LINE STA. 11+00



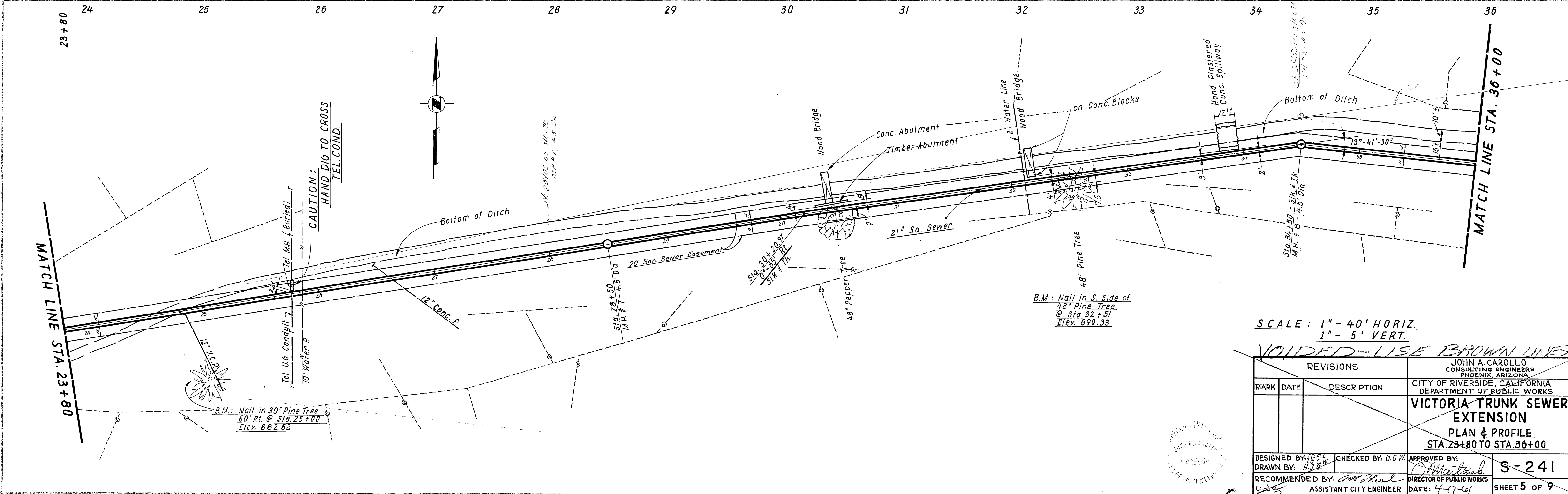
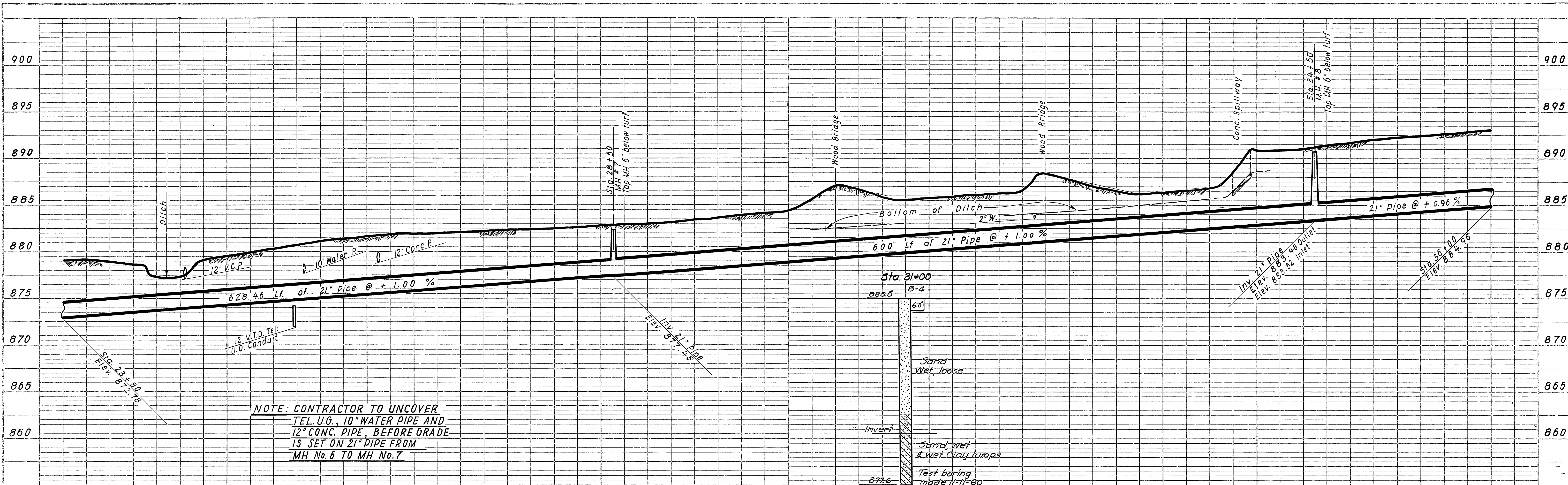
B.M. <sup>1</sup>/<sub>4</sub>" on N.W. Corner Conc. Slab  
 24" Lt. Sta. 12+50  
 Elev. 868.06

MATCH LINE STA. 11+00

MATCH LINE STA. 23+80

SCALE: 1" = 40' HORIZ.  
 1" = 5' VERT.  
 VOIDED - USE BROWN LINES

REVISIONS		JOHN A. CAROLLO CONSULTING ENGINEERS PHOENIX, ARIZONA	
MARK	DATE	DESCRIPTION	CITY OF RIVERSIDE, CALIFORNIA DEPARTMENT OF PUBLIC WORKS
		<b>VICTORIA TRUNK SEWER EXTENSION</b>	
		PLAN & PROFILE STA. 11+00 TO STA. 23+80	
DESIGNED BY: <i>g.c.m.</i>	CHECKED BY: G.C.M.	APPROVED BY: <i>[Signature]</i>	<b>S-241</b>
DRAWN BY: <i>g.c.m.</i>	RECOMMENDED BY: <i>[Signature]</i>	DIRECTOR OF PUBLIC WORKS	
		DATE: 4-17-61	SHEET 4 OF 9



SCALE: 1" = 40' HORIZ.  
1" = 5' VERT.

~~VOIDED - USE BROWN LINES~~

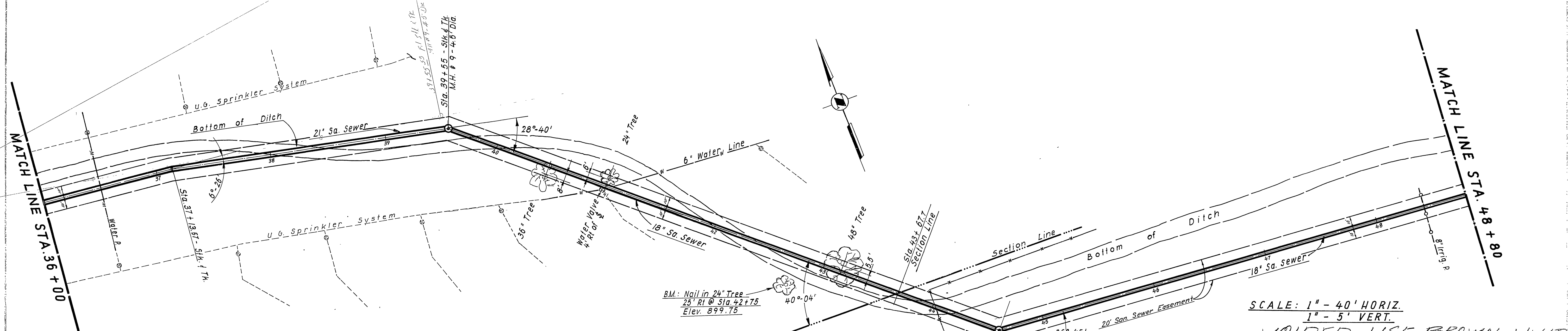
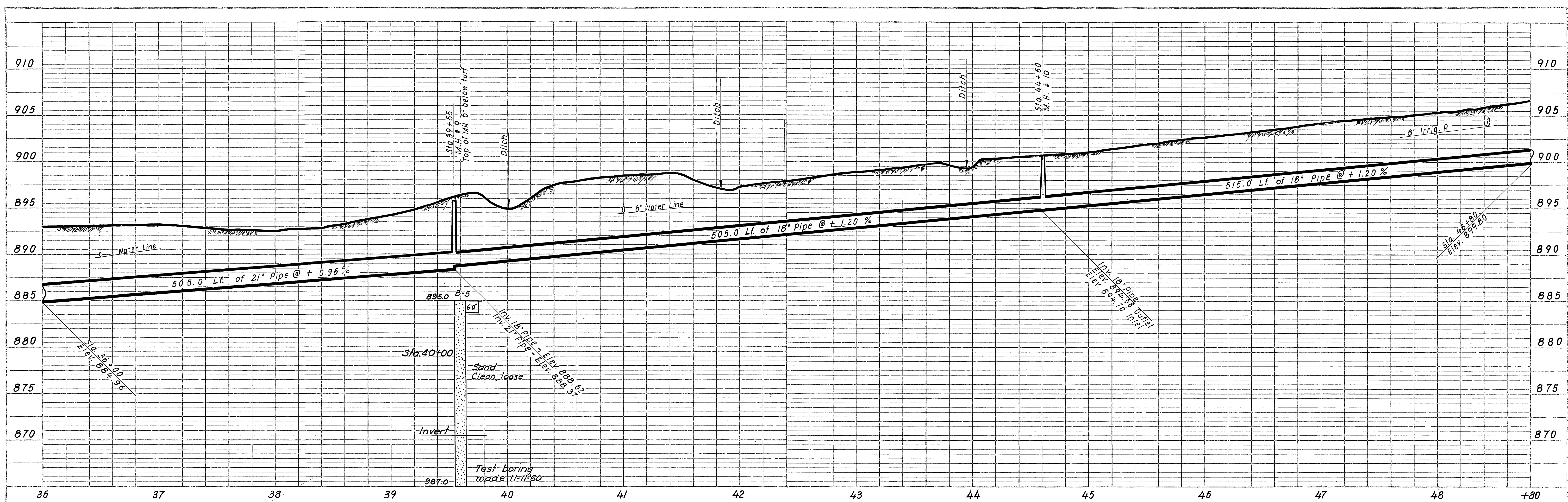
REVISIONS		DESCRIPTION
MARK	DATE	

JOHN A. CAROLLO  
CONSULTING ENGINEER'S  
PHOENIX, ARIZONA  
CITY OF RIVERSIDE, CALIFORNIA  
DEPARTMENT OF PUBLIC WORKS

**VICTORIA TRUNK SEWER  
EXTENSION  
PLAN & PROFILE  
STA. 23+80 TO STA. 36+00**

DESIGNED BY: J.C.R. CHECKED BY: G.C.W. APPROVED BY: *[Signature]*  
DRAWN BY: H.J.G. DIRECTOR OF PUBLIC WORKS  
RECOMMENDED BY: *[Signature]* ASSISTANT CITY ENGINEER DATE: 4-17-69

**S-241**  
SHEET 5 OF 9



SCALE: 1" = 40' HORIZ.  
1" = 5' VERT.

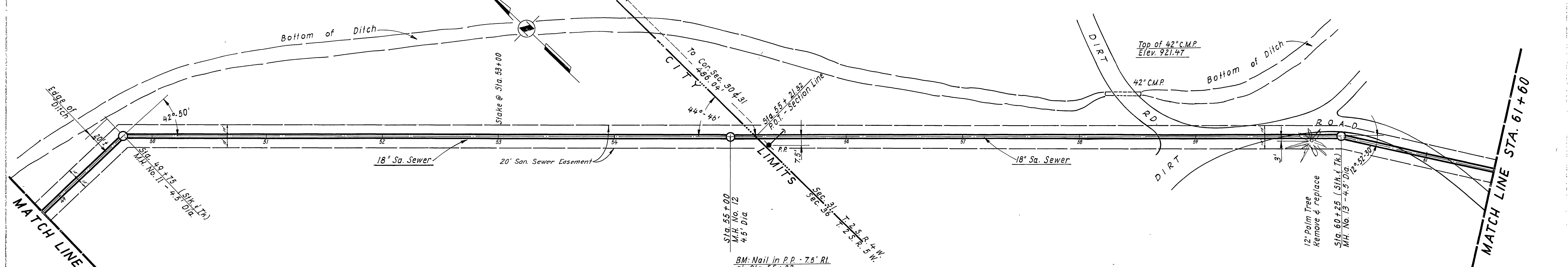
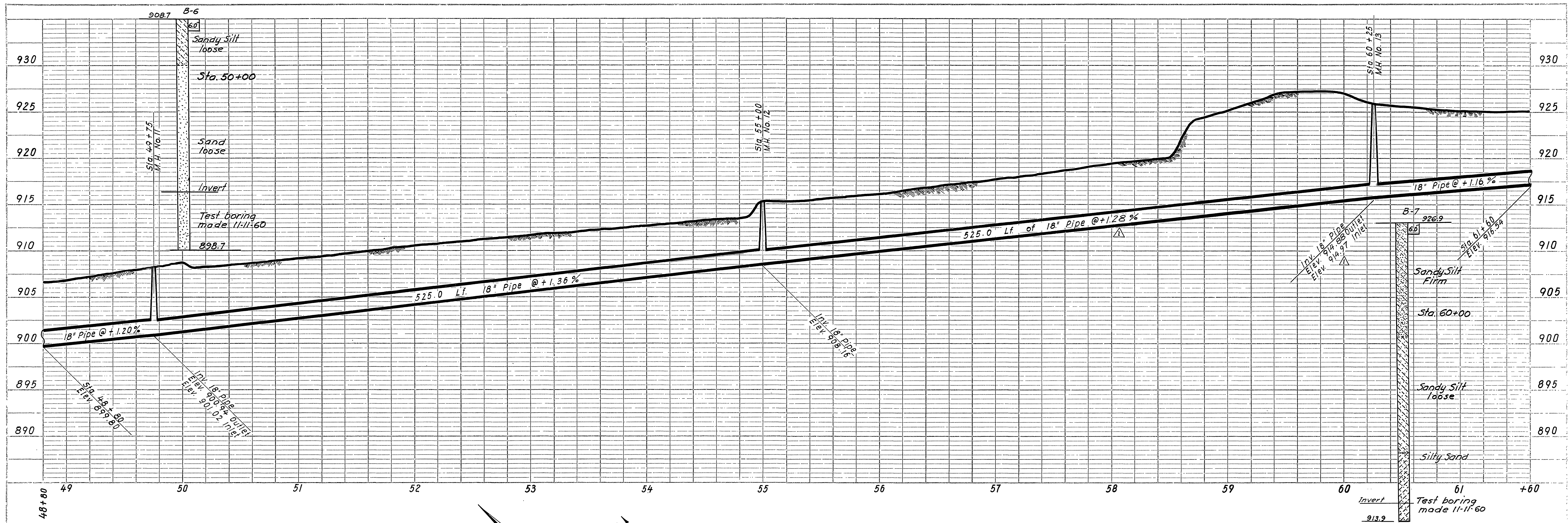
~~VOIDED - USE BROWN LINES~~

REVISIONS		DESCRIPTION	APPROVED BY
MARK	DATE		

JOHN A. CAROLLO  
 CONSULTING ENGINEERS  
 PHOENIX, ARIZONA  
 CITY OF RIVERSIDE, CALIFORNIA  
 DEPARTMENT OF PUBLIC WORKS  
**VICTORIA TRUNK SEWER  
 EXTENSION**  
 PLAN & PROFILE  
 STA. 36+00 TO STA. 48+80

DESIGNED BY: *[Signature]* CHECKED BY: G.C.W. APPROVED BY: *[Signature]*  
 DRAWN BY: H.J.B. RECOMMENDED BY: *[Signature]* DIRECTOR OF PUBLIC WORKS  
 ASSISTANT CITY ENGINEER DATE: 4-17-61

S-241  
SHEET 6 OF 9



SCALE: 1" = 40' HORIZ.  
1" = 5' VERT.

~~VOIDED - USE BROWN LINES~~

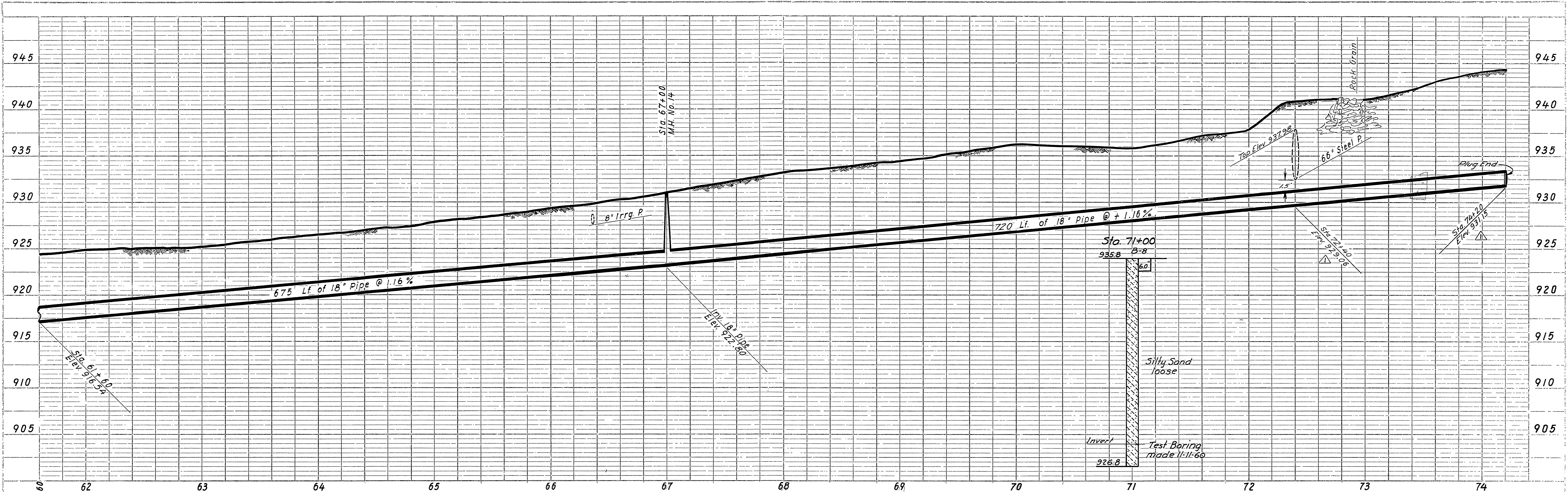
REVISIONS		JOHN A. CAROLLO CONSULTING ENGINEERS PHOENIX, ARIZONA	
MARK	DATE	DESCRIPTION	CITY OF RIVERSIDE, CALIFORNIA DEPARTMENT OF PUBLIC WORKS
△	4-7-61	Sewer lowered to clear deep Canal Co. 46" steel pipe by 15" min.	<b>VICTORIA TRUNK SEWER EXTENSION</b>
		DESIGNED BY: J.P.B.	CHECKED BY: G.C.M. APPROVED BY: [Signature]
		DRAWN BY: H.T.G.	DIRECTOR OF PUBLIC WORKS
		RECOMMENDED BY: [Signature]	ASSISTANT CITY ENGINEER
		DATE: 4-7-61	

DESIGNED BY: J.P.B.  
DRAWN BY: H.T.G.  
RECOMMENDED BY: [Signature]  
DATE: 4-7-61

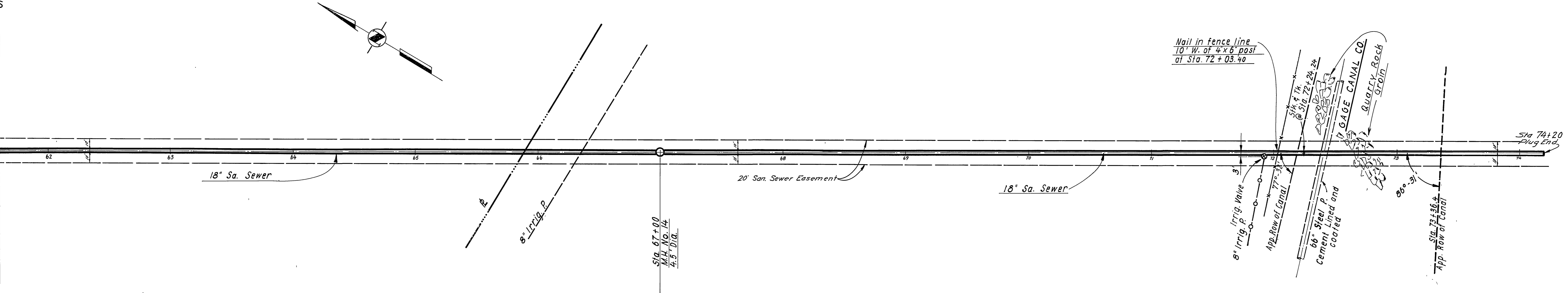
CHECKED BY: G.C.M.  
APPROVED BY: [Signature]  
DIRECTOR OF PUBLIC WORKS

DATE: 4-7-61

**S-241**  
SHEET 7 OF 9



MATCH LINE STA. 61+60

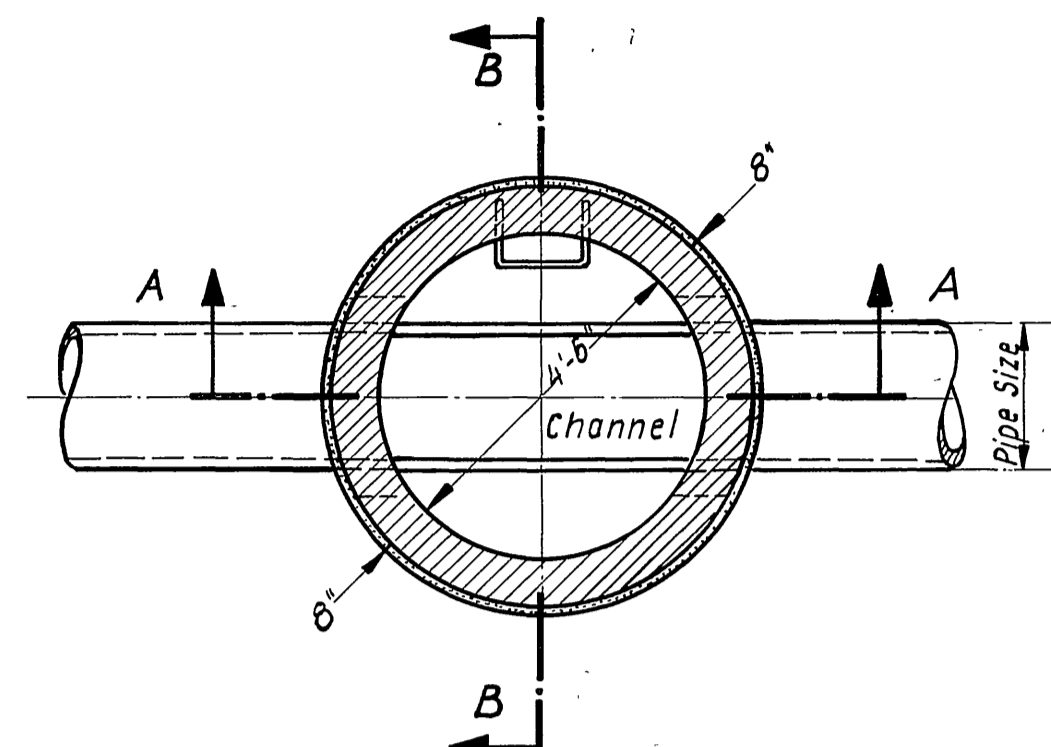


SCALE: 1" = 40' HORIZ.  
1" = 5' VERT.

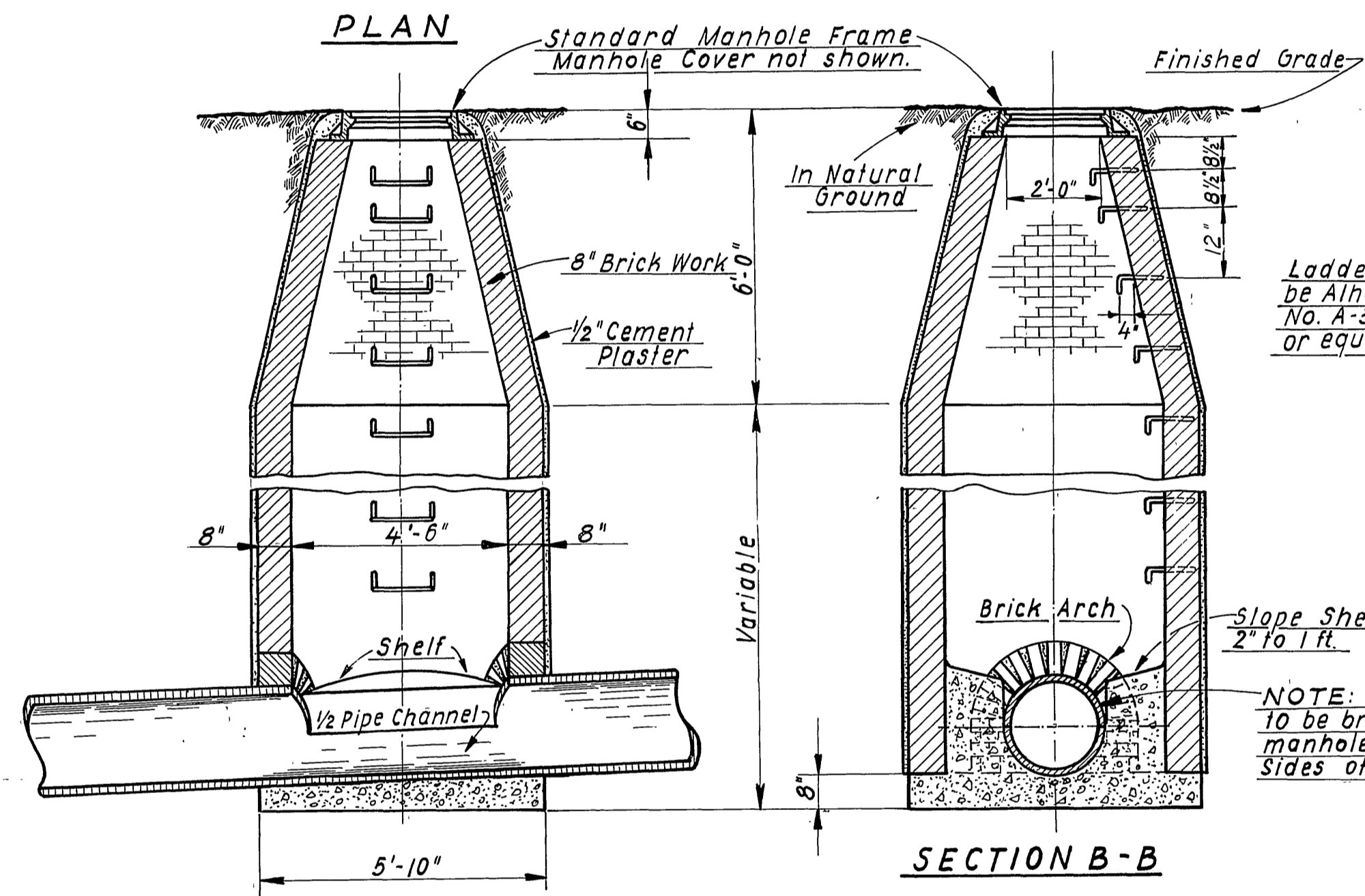
REVISIONS			JOHN A. CAROLLO CONSULTING ENGINEERS PHOENIX, ARIZONA CITY OF RIVERSIDE, CALIFORNIA DEPARTMENT OF PUBLIC WORKS
MARK	DATE	DESCRIPTION	
△	4-7-61	Sewer lowered to clear Gage Canal Co. 66" steel pipe by 15" P.W.	<b>VICTORIA TRUNK SEWER            EXTENSION</b> PLAN & PROFILE STA. 61+60 TO STA. 73+35
	9-5-61	AS BUILT H.R.C.	
DESIGNED BY: J.B.O.L.		CHECKED BY: G.C.W.	APPROVED BY:
DRAWN BY: H.J.O.			<i>[Signature]</i> DIRECTOR OF PUBLIC WORKS
RECOMMENDED BY: W.D.S.		ASSISTANT CITY ENGINEER	DATE: 4-17-61

S-241  
SHEET 8 OF 9



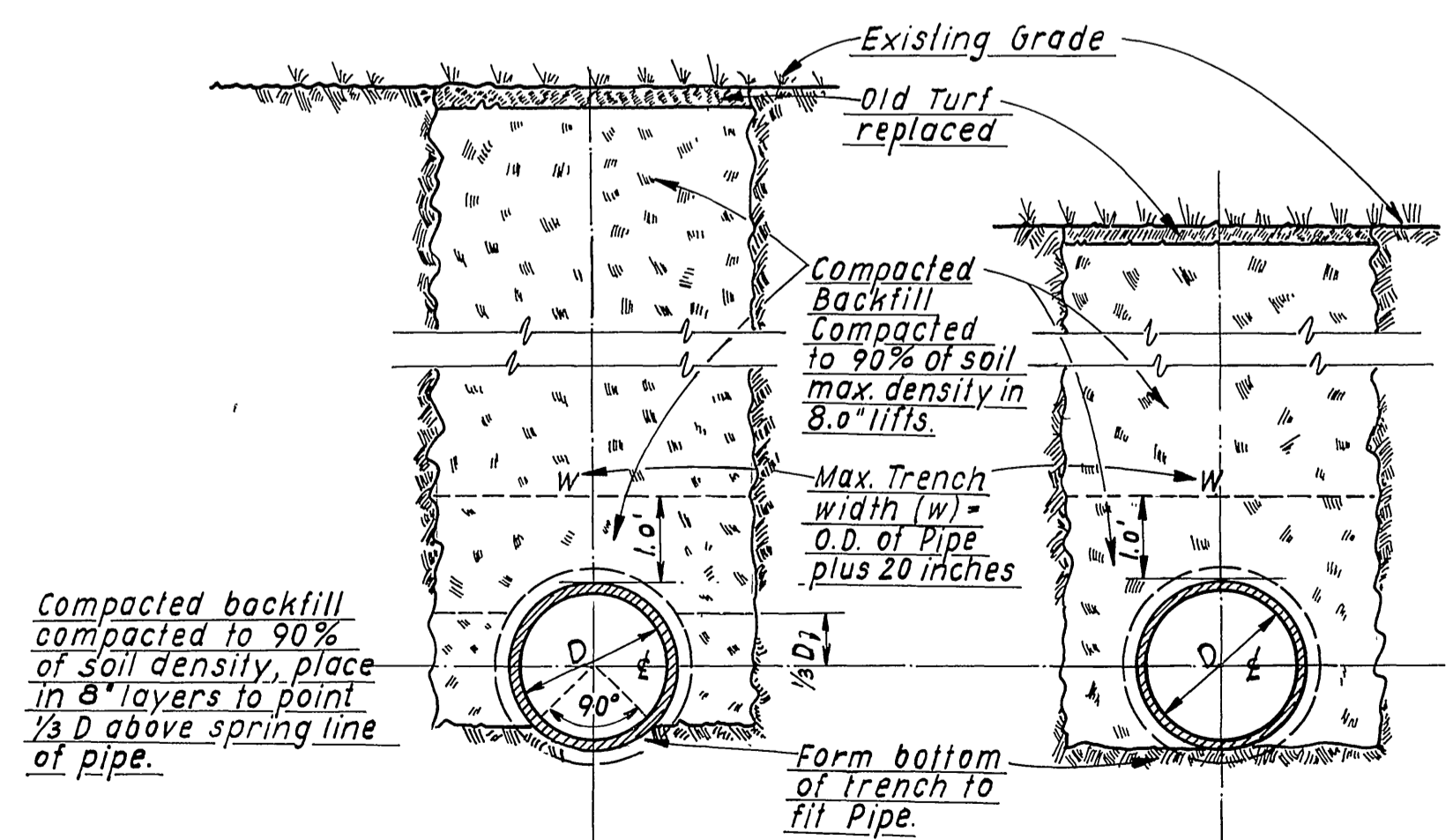


- NOTES:**
1. - At inlets and outlets turn brick arch over pipe.
  2. - Channel shall be full pipe diameter.
  3. - All brick to be whole, sound and hard-burned and must otherwise conform to the City Standard Specifications No. 460.



**STANDARD MANHOLE**

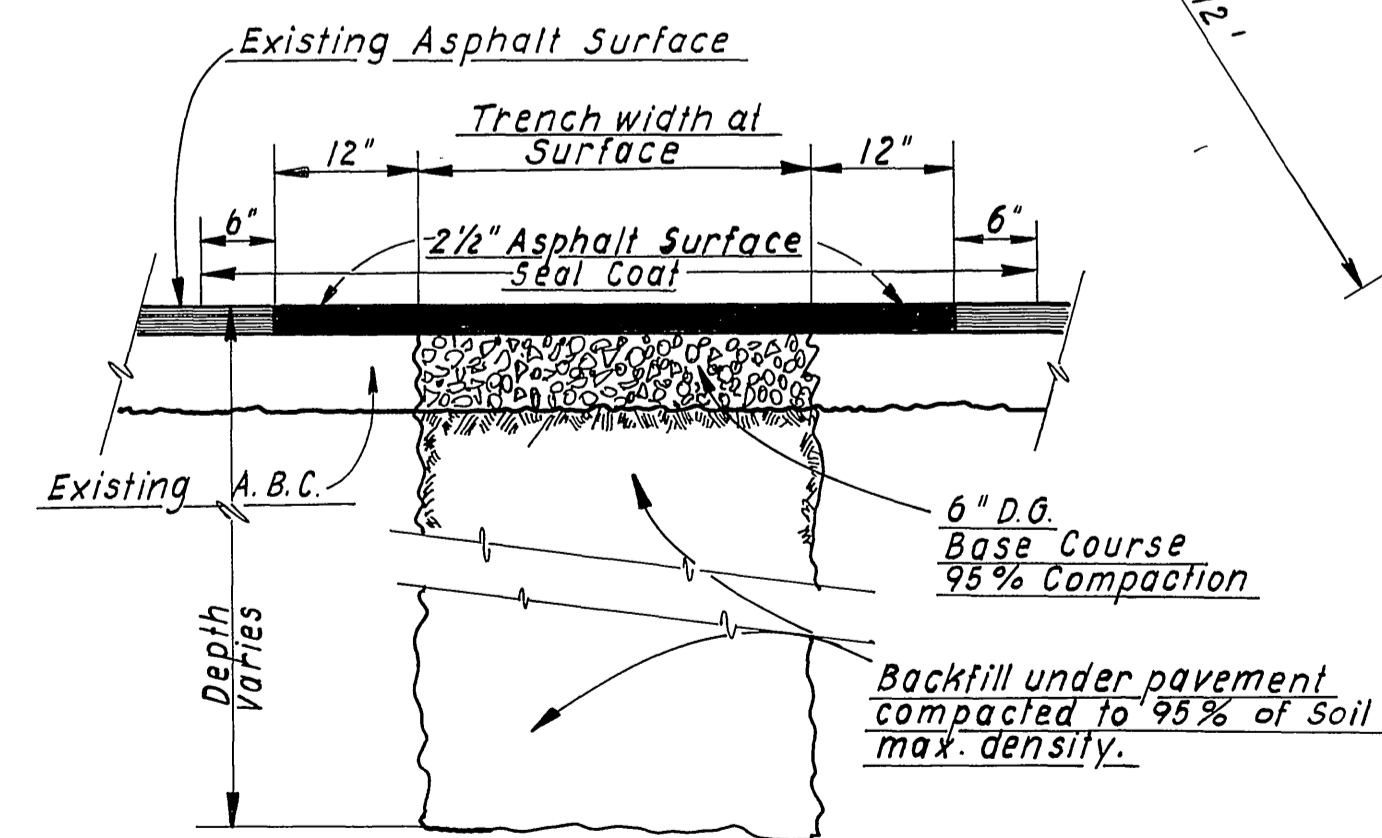
NO SCALE



**BEDDING WHEN COVER EXCEEDS 8 FT.**

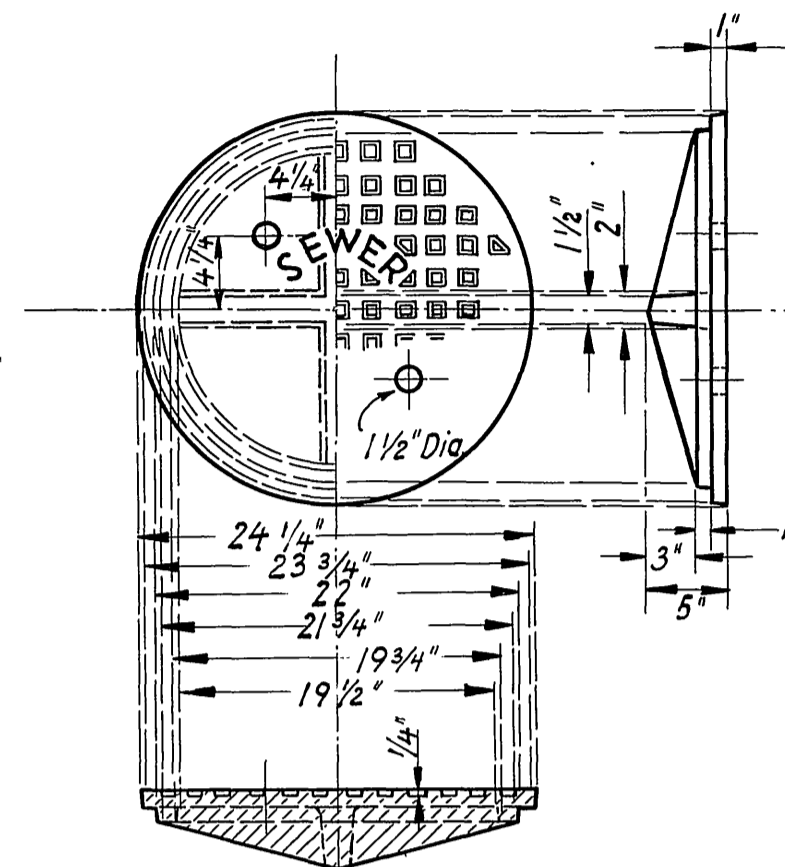
NO SCALE

**BEDDING WHEN COVER IS LESS THAN 8 FT.**



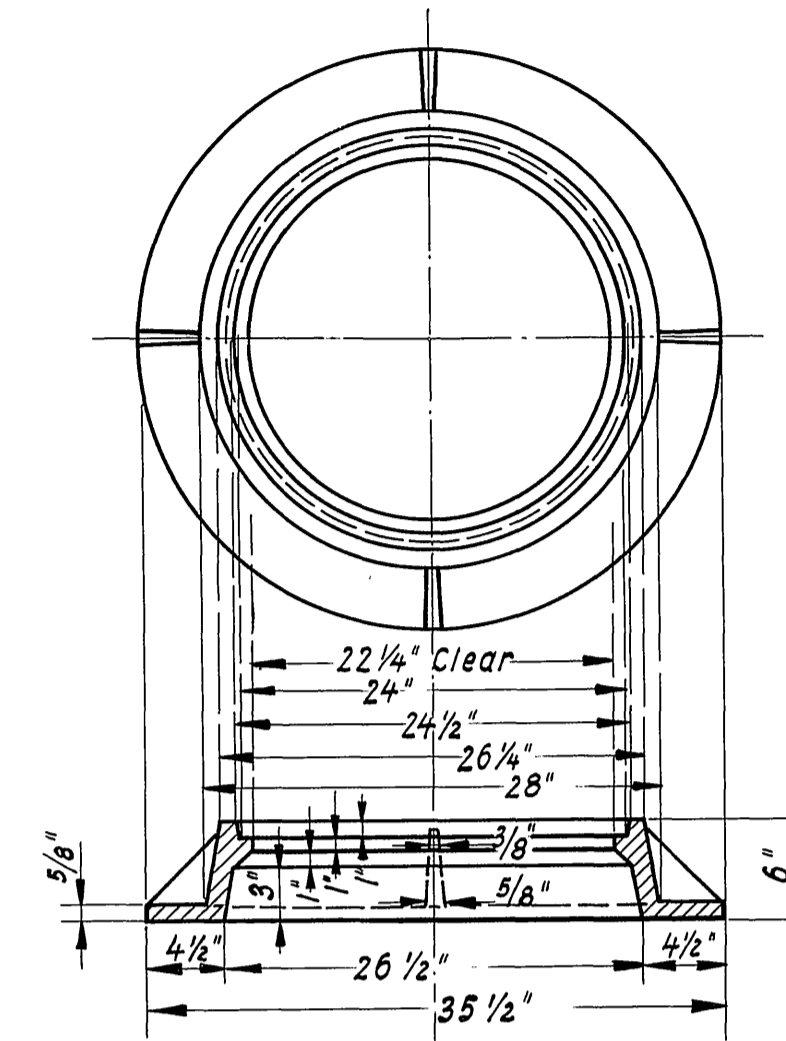
**ASPHALT PAVEMENT REPLACEMENT DETAIL**

NO SCALE

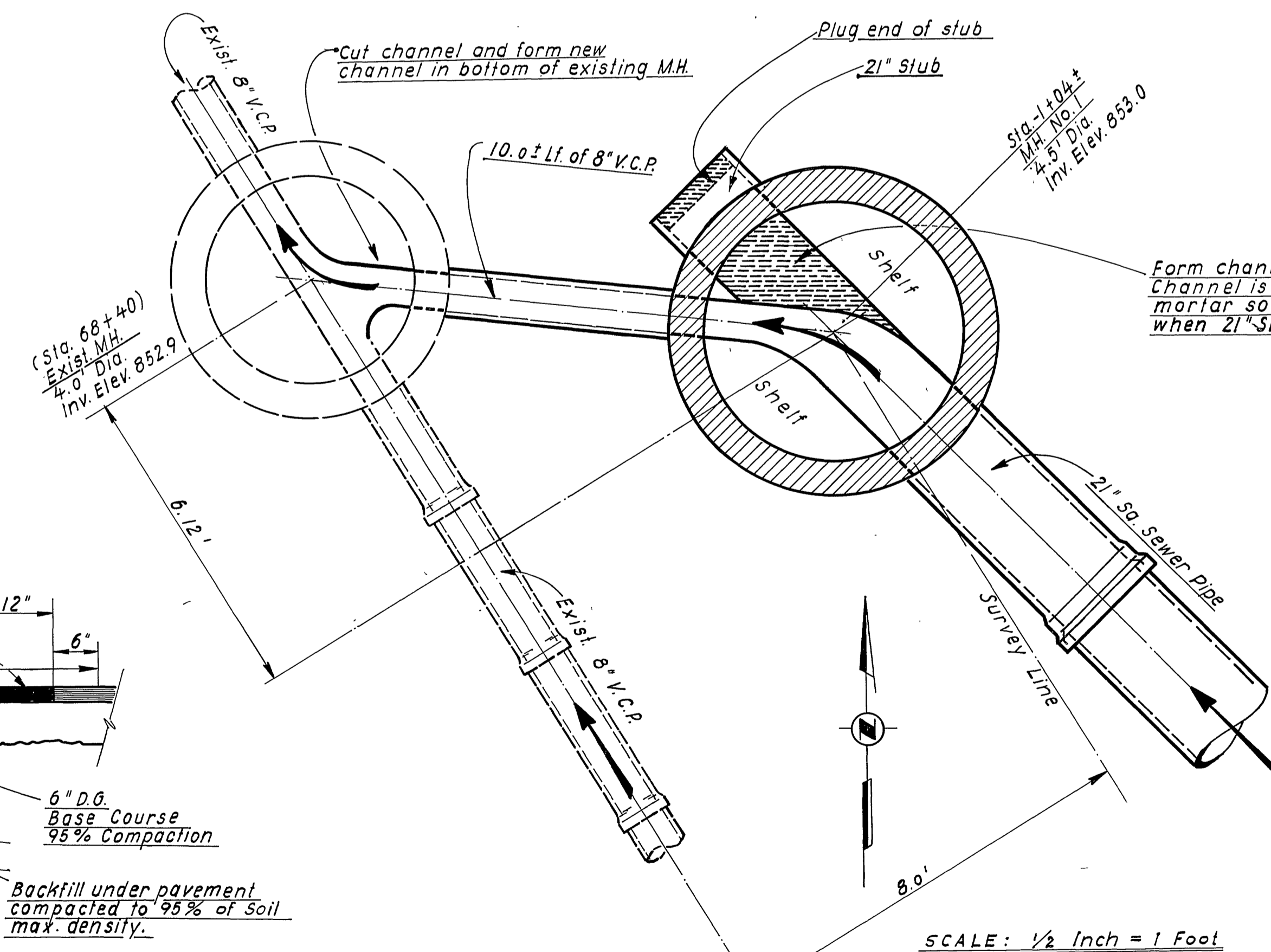


**SECTION MANHOLE COVER**

NO SCALE



**SECTION MANHOLE FRAME**



**MANHOLE CONNECTION AT STA. -1+04 ±**

**TEST BORING DATA**

Elevation top of Boring: 6.0  
 Dia. of Boring: 6.0  
 Estimated Material Change  
 Invert Elev. of Pipe  
 Depth of Boring

	GRAVEL		SILTY CLAY OR CLAYEY SILT
	SAND		PEAT OR ORGANIC MATTER
	SILT		FILL MATERIAL
	CLAY		SHALE
	SANDY CLAY OR CLAYEY SAND		SANDSTONE
	SANDY SILT OR SILTY SAND		ROCK

The Contractor shall note that the test borings are made at certain intervals where indicated on the profiles, and that intermediate soil conditions are unknown by the City of Riverside.

REVISIONS			JOHN A. CAROLLO CONSULTING ENGINEERS PHOENIX, ARIZONA CITY OF RIVERSIDE, CALIFORNIA DEPARTMENT OF PUBLIC WORKS
MARK	DATE	DESCRIPTION	
			<b>VICTORIA TRUNK SEWER EXTENSION</b> <b>DETAILS</b>
DESIGNED BY: G.C.W.	CHECKED BY: G.C.W.	APPROVED BY: <i>[Signature]</i>	<b>S-241</b> SHEET 9 OF 9
DRAWN BY: H.J.G.	RECOMMENDED BY: <i>[Signature]</i>	DATE: 4-17-61	