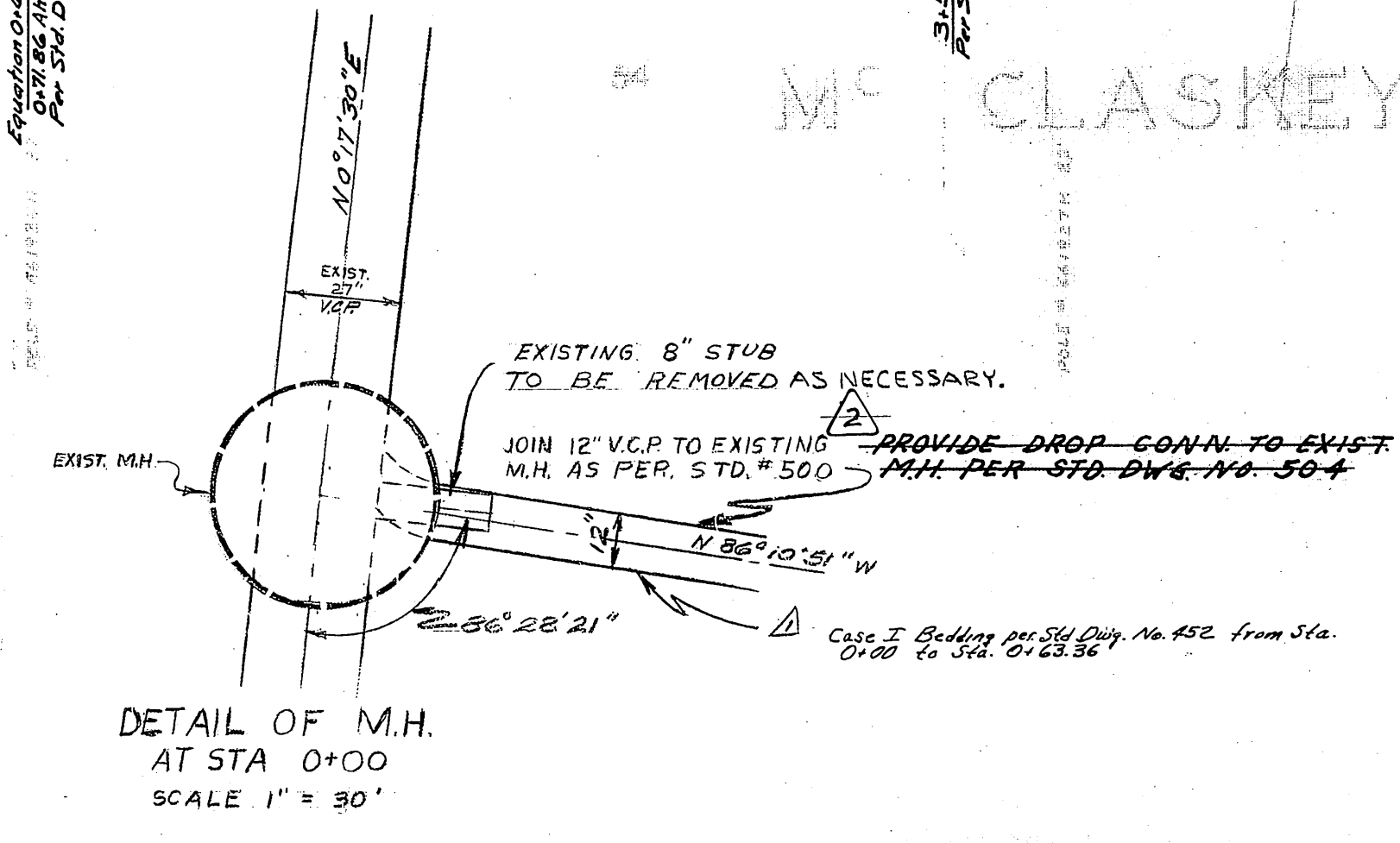


765
760
755

B.M. ELEV. 757.569 R.R. SPK. IN POLE #122190 N'LY SIDE JURUPA 120' WLY OF BAKER.
F.B. Z/7-16, 645/1-30, 648/39-44
SCALE: HOR. 1"=50'
VERT. 1"=5'

- NOTES:
- All Construction to be in accordance with City of Riverside Standard Specifications No. 460
 - All M.H. Rim elevations to be 0.5' above existing ground.
 - Soil Borings taken October 3, 1960.

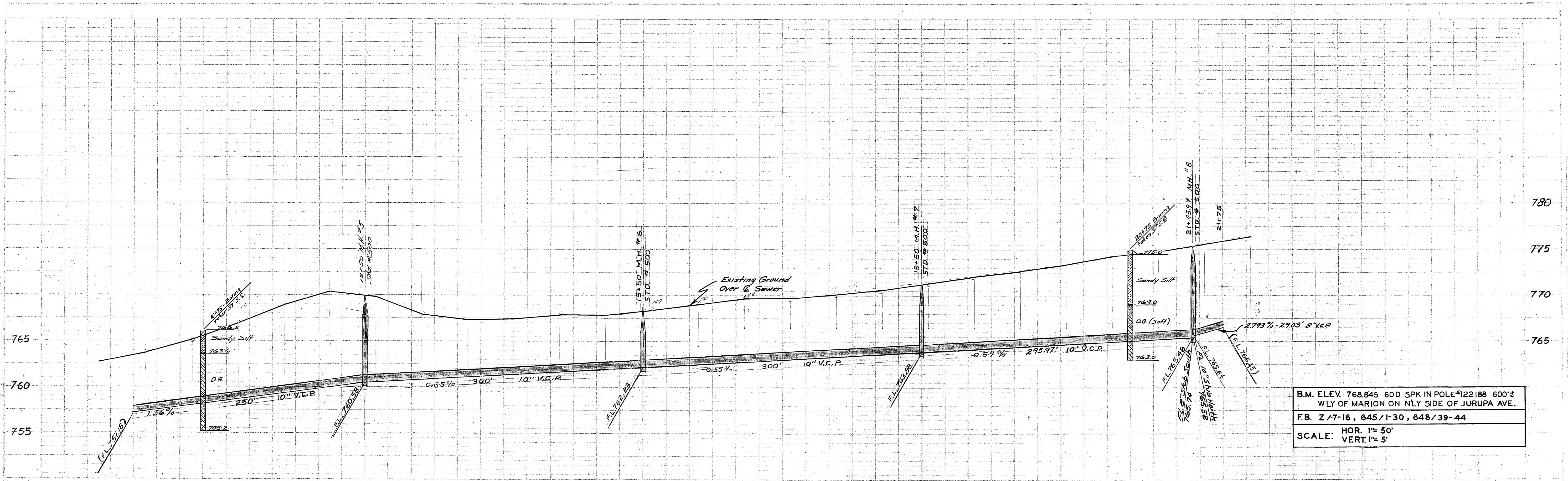
PROVIDE DROP CONN. TO EXIST. M.H. PER STA. DWG. NO. 50-4
SEE PLAN NO. 1077



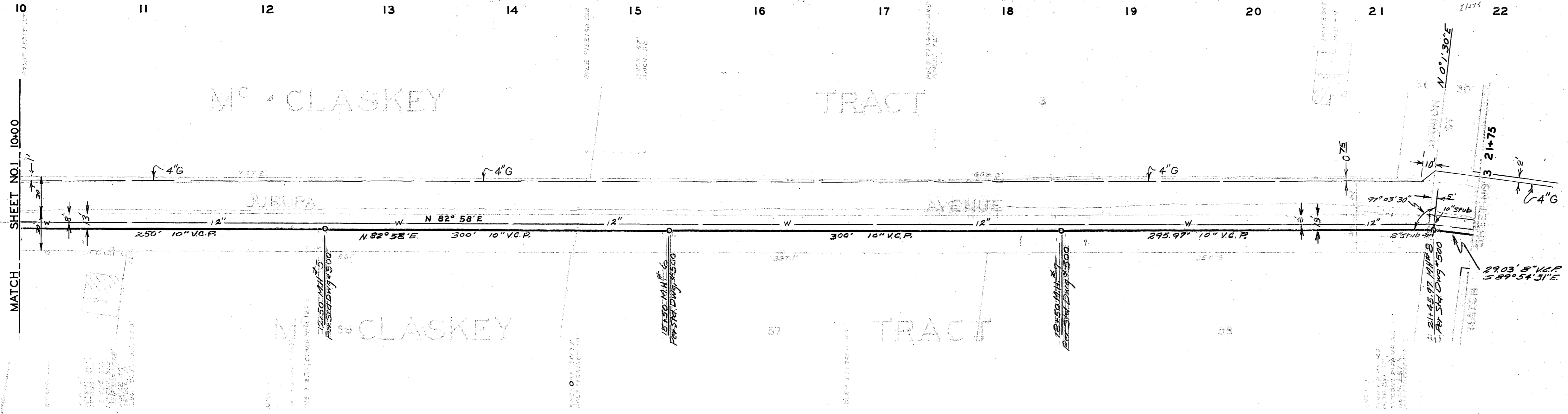
REVISIONS		CITY OF RIVERSIDE CALIFORNIA DEPARTMENT OF PUBLIC WORKS
MARK	DESCRIPTION	
1	1/17/61 Case I Bedding from Sta. 0+00 to 0+63.36 per P.H. App. [Signature]	JURUPA AVENUE TRUNK SEWER ACORN ST. TO JASMINE ST.
2	3/14/61 PROVIDE DROP CONN. TO EXIST. M.H. AT STA. 0+00 AS PER STA. DWG. NO. 50-4 PER CHANGE ORDER # [Signature]	
3	3/24/61 Delete as per change order [Signature]	

DESIGNED BY: aef
DRAWN BY: R.M.
CHECKED BY: [Signature]
DATE: 10-26-65

S-242

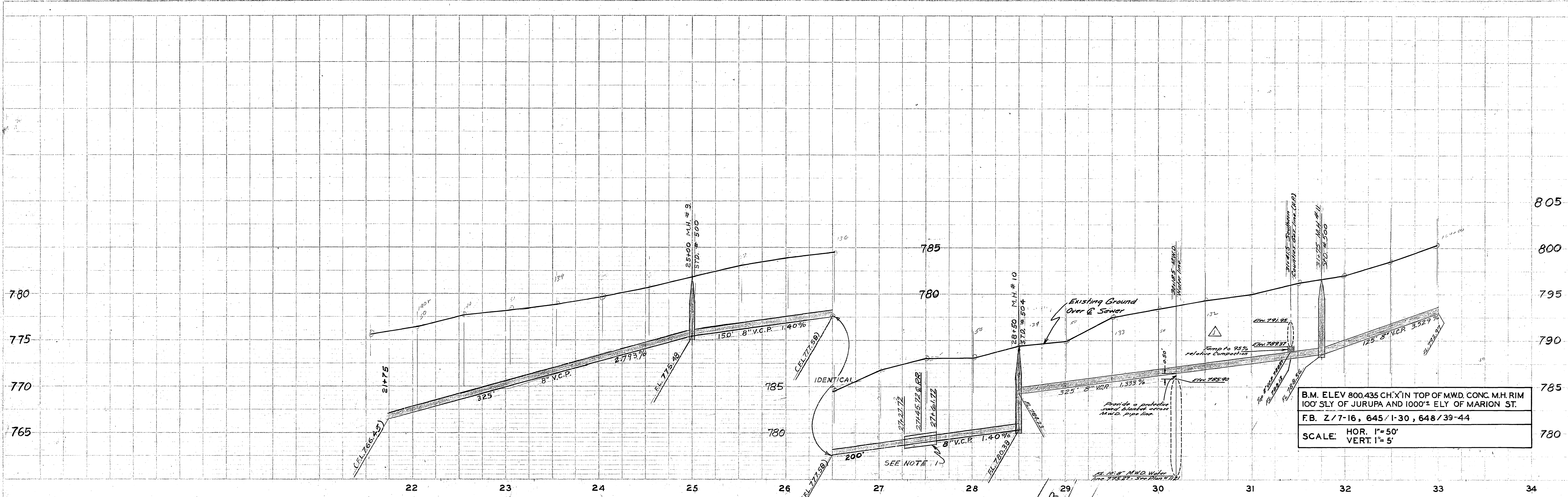


B.M. ELEV. 768.845 60D SPK IN POLE #122188 600'±
 WLY OF MARION ON NLY SIDE OF JURUPA AVE.
 F.B. Z/7-16, 645/1-30, 648/39-44
 SCALE: HOR. 1"= 50'
 VERT. 1"= 5'

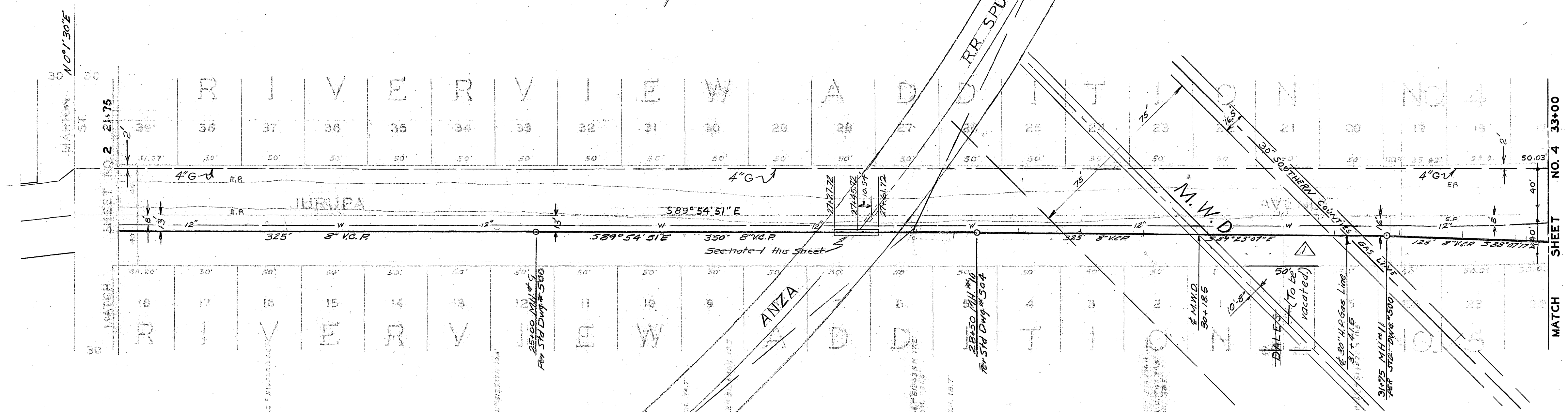


REVISIONS			CITY OF RIVERSIDE CALIFORNIA DEPARTMENT OF PUBLIC WORKS
MARK	DATE	DESCRIPTION	
		6-6-61 For exist. ground elev. Rev.	

JURUPA AVENUE TRUNK SEWER ACORN ST. TO JASMINE ST.		S 242
DESIGNED BY: <i>ACP</i> CHECKED BY: <i>WJG</i> APPROVED BY: <i>J. M. ...</i> DATE: 10-26-60	SHEET NO. 10-00 MATCH	



B.M. ELEV 800.435 CH. X IN TOP OF M.W.D. CONC. M.H. RIM
 100' SLY OF JURUPA AND 1000' ELY OF MARION ST.
 F.B. Z/7-16, 645/1-30, 648/39-44
 SCALE: HOR. 1"=50'
 VERT. 1"=5'

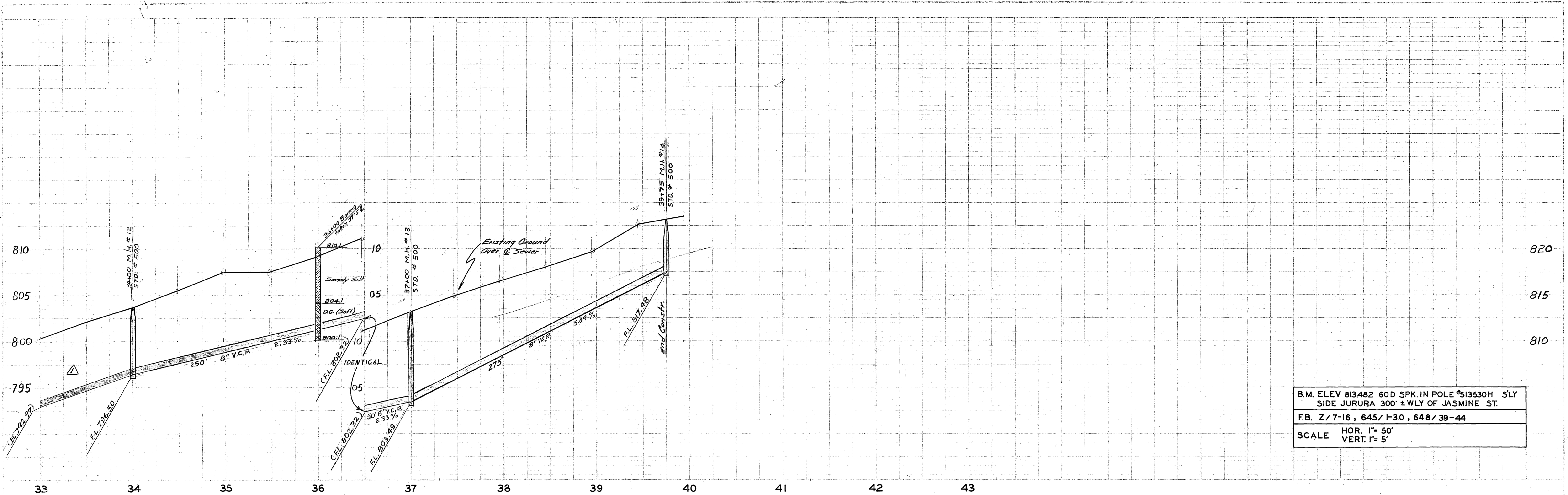


SCALE: 1"=50'

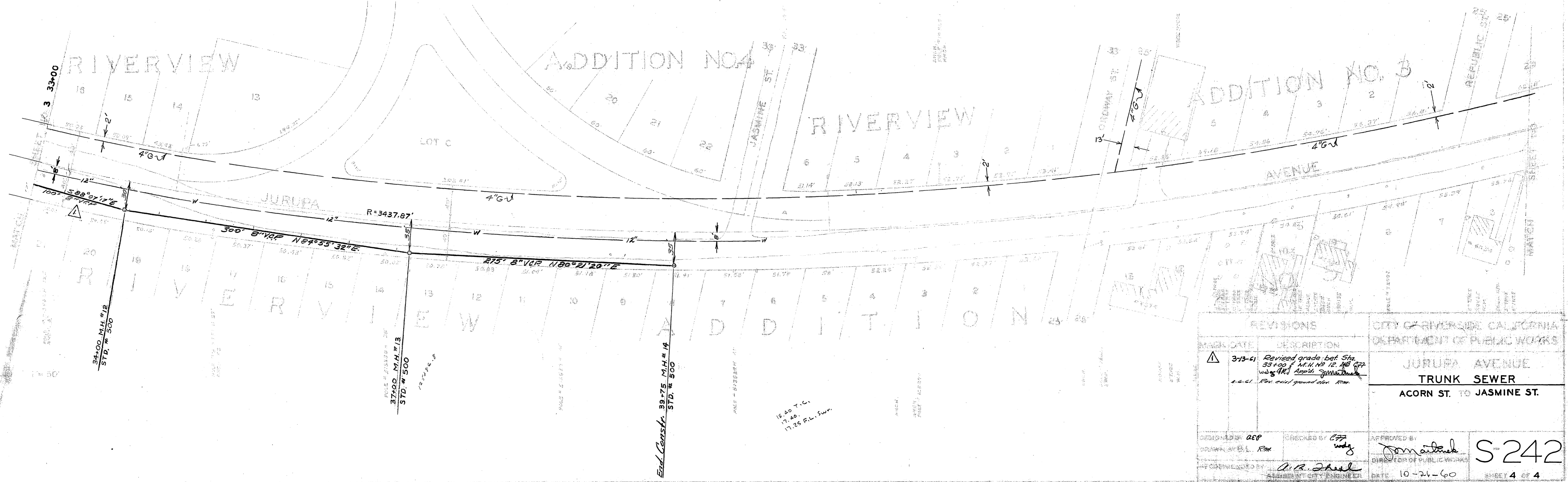
NOTES:
 1. OPEN TRENCH AND ENCASE SEWER PER STD. DWG. NO. 580. COMPACT OVER ENCASEMENT TO 95% RELATIVE COMPACTION.

REVISIONS			CITY OF RIVERSIDE CALIFORNIA DEPARTMENT OF PUBLIC WORKS	
MARK	DATE	DESCRIPTION		
Δ	3/1/60	Revised grade bet. M.H. No 10 & M.H. No 11. (Encased) M.H. No 11. Rev. location of M.W.D. & Southern Gas Co. pipelines. DWG. CH. W. (K).	JURUPA AVENUE TRUNK SEWER ACORN ST. TO JASMINE ST.	
	4-6-61	Rev. exist. ground elev. P.P.		

DESIGNED BY: aef
 DRAWN BY: E.L. Rom
 RECOMMENDED BY: A.R. Deuel
 DATE: 10-26-60
 SHEET 3 OF 4



B.M. ELEV 813482 60D SPK. IN POLE #513530H S'LY
 SIDE JURUPA 300' ± WLY OF JASMINE ST.
 F.B. Z/7-16, 645/I-30, 648/39-44
 SCALE HOR. 1" = 50'
 VERT. 1" = 5'



REVISIONS		CITY OF RIVERSIDE, CALIFORNIA DEPARTMENT OF PUBLIC WORKS
MARK DATE	DESCRIPTION	
3-13-61	Revised grade bet Sta. 33+00 & 41+12.48 per 11/24/60. Also, 11/25/60. For exist ground over sewer.	JURUPA AVENUE TRUNK SEWER ACORN ST. TO JASMINE ST.
DESIGNED BY: AEP	CHECKED BY: [Signature]	APPROVED BY: [Signature]
DRAWN BY: R.M.		DIRECTOR OF PUBLIC WORKS
DATE: 10-21-60		DATE: 10-21-60

S-242
 SHEET 4 OF 4