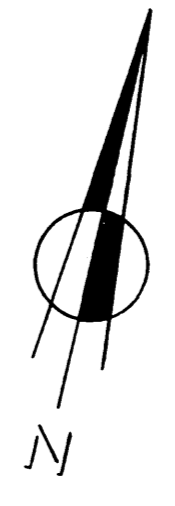
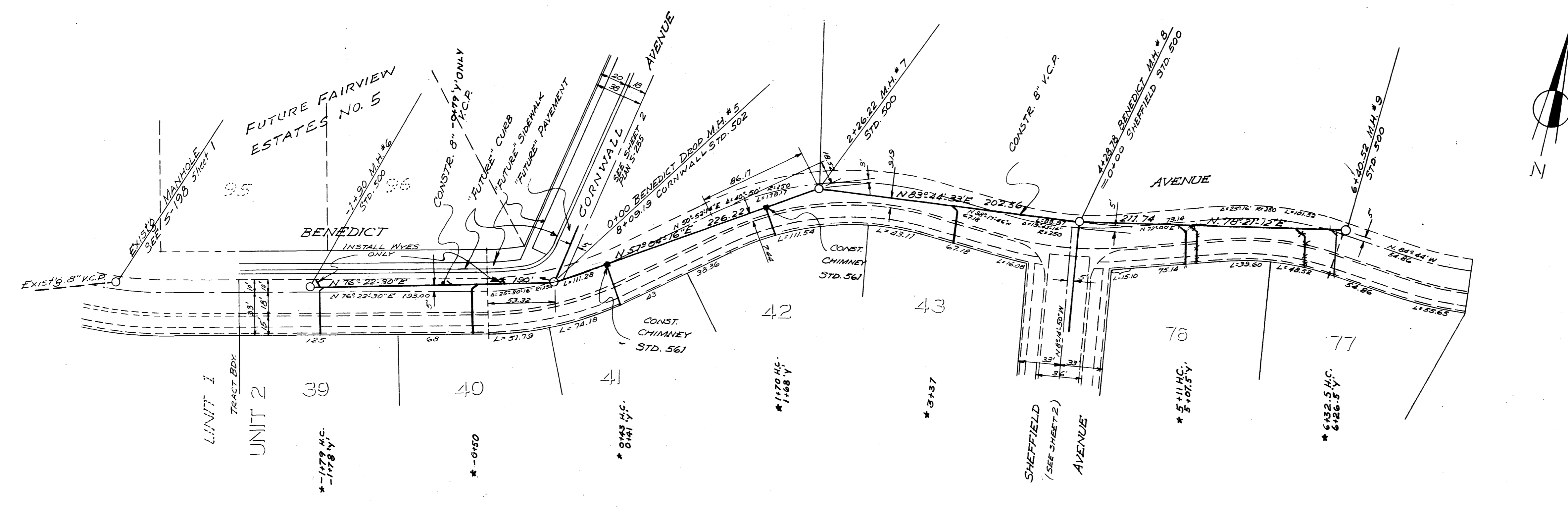


PROFILE	
DATE	BY
NOTED	BY
STRUCTURE NOTATIONS CHECKED	BY

BENCH MARK
 SPIKE IN P.P. #8805J 100' NORTH OF
 INTERSECTION OF BENEDICT & GLENHAVEN.
 ELEV. 1089.66 R.B. 412/16



PLAN	
DATE	BY
NOTED	BY
STRUCTURE NOTATIONS CHECKED	BY

ALBERT A. WEBB ASSOCIATES
 CIVIL ENGINEERS - RIVERSIDE, CALIFORNIA
 APPROVED *Albert A. Webb* DATE 7/13/60
 E.L. 9272

CITY OF RIVERSIDE, CALIFORNIA
 DEPARTMENT OF PUBLIC WORKS

Sewer Plan & Profile
BENEDICT AVENUE
 VICTORIA WOODS UNIT No. 2

REVISION	
MARK	DATE

APPROVED BY *[Signature]*
 DIRECTOR OF PUBLIC WORKS
 DATE 10-5-60

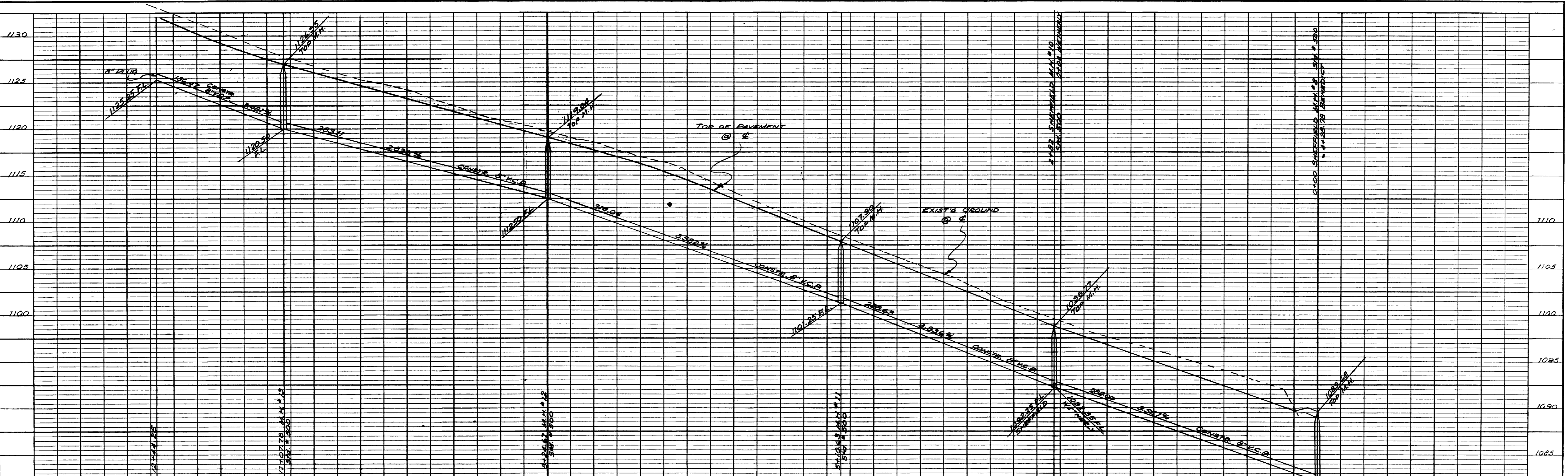
NO. S-250

SHEET 1 OF 4

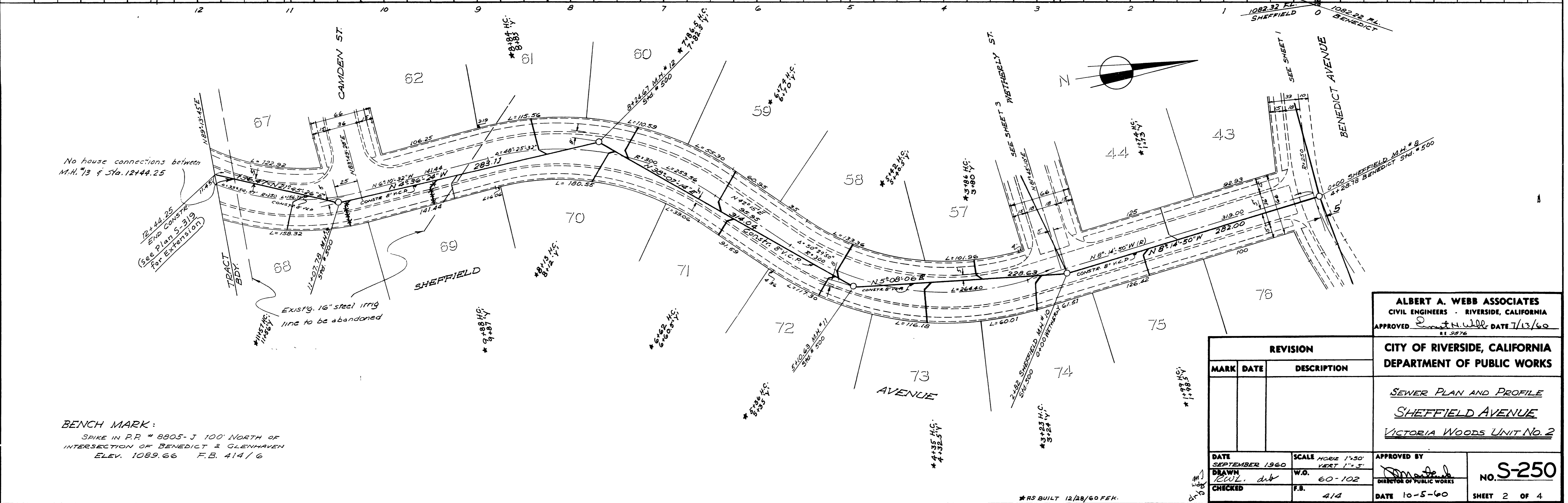
QUANTITY ESTIMATE

8" VITRIFIED CLAY PIPE	3,262 L.F.
4" VITRIFIED CLAY PIPE	1,179 L.F.
8" x 4" WYES	41 EA.
MANHOLES - STD. 500	12
CLEANOUTS - STD. 560	2
CHIMNEYS - STD. 561	2
DROP MANHOLE STD. 502	1

*RS BUILT 12/28/60 FEK



PROFILE	
NO.	DATE
BY	DATE
BY	DATE
BY	DATE



PLAN	
NO.	DATE
BY	DATE
BY	DATE
BY	DATE

No house connections between M.H. #73 & Sta. 12+44.25

12+44.25
 End Const. for Extension
 (See Plan S-319)

Existg. 16" steel 1119 line to be abandoned

BENCH MARK:
 SPIKE IN P.R. # 8805-J 100' NORTH OF INTERSECTION OF BENEDICT & GLENHAVEN
 ELEV. 1089.66 F.B. 414/G

ALBERT A. WEBB ASSOCIATES
 CIVIL ENGINEERS - RIVERSIDE, CALIFORNIA
 APPROVED: *[Signature]* DATE 7/13/60

CITY OF RIVERSIDE, CALIFORNIA
 DEPARTMENT OF PUBLIC WORKS

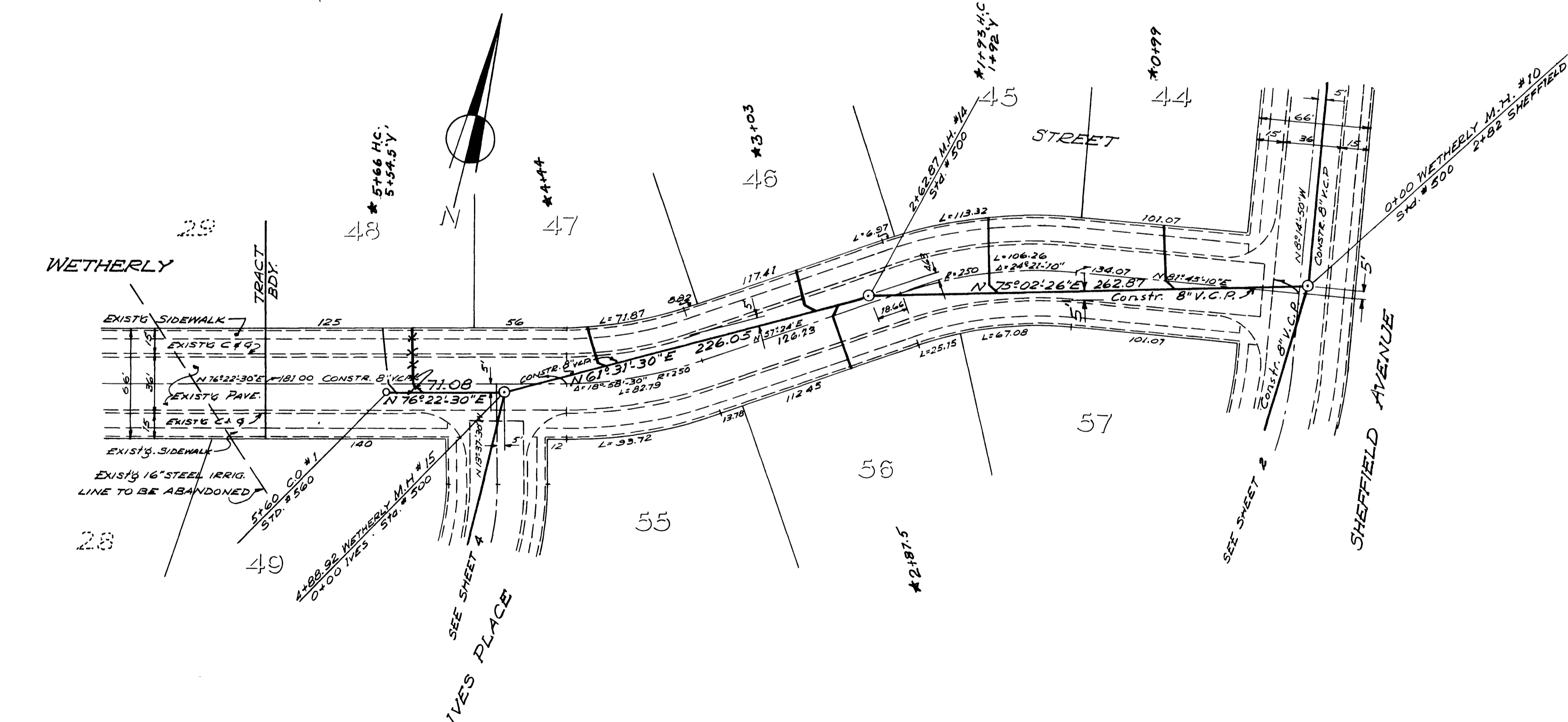
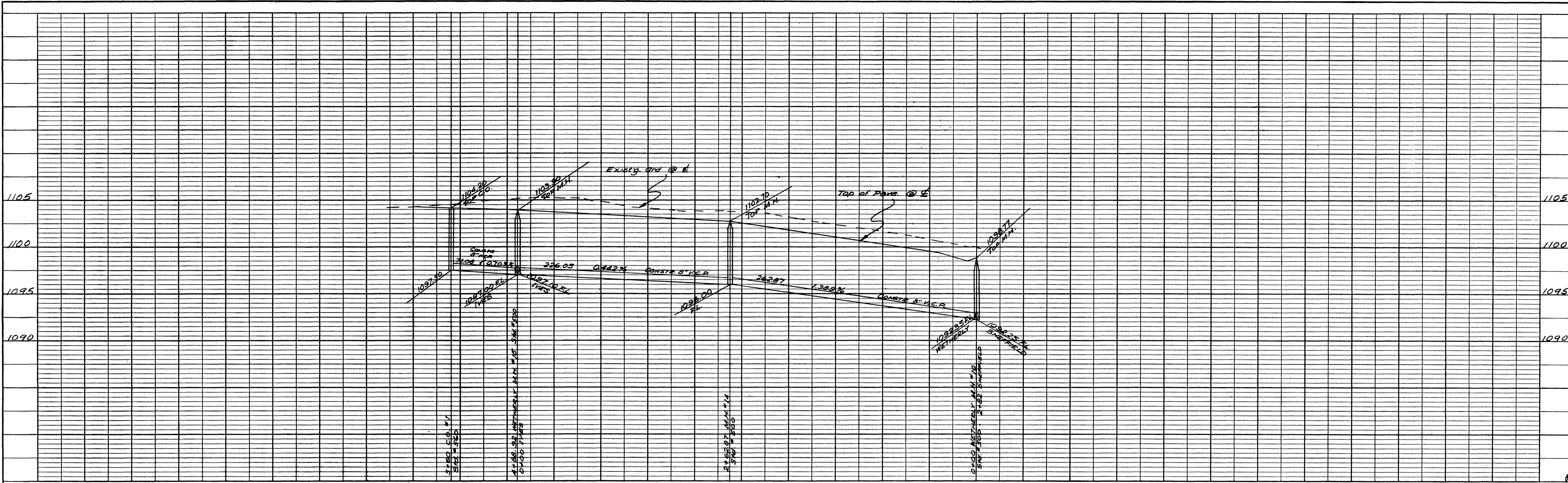
SEWER PLAN AND PROFILE
 SHEFFIELD AVENUE
 VICTORIA WOODS UNIT No. 2

REVISION	
MARK	DATE

APPROVED BY: *[Signature]*
 DIRECTOR OF PUBLIC WORKS
 DATE 10-5-60

NO. S-250
 SHEET 2 OF 4

*RS BUILT 12/28/60 FEK.



BENCH MARK
 SPIKE IN P.P. # 8805-J 100' NORTH
 OF INTERSECTION OF BENEDICT & GLENHAVEN.
 ELEV. 1089.66 F.D. 414/16

ALBERT A. WEBB ASSOCIATES
 CIVIL ENGINEERS - RIVERSIDE, CALIFORNIA
 APPROVED *Albert A. Webb* DATE 7/13/60
 #1 2876

CITY OF RIVERSIDE, CALIFORNIA
 DEPARTMENT OF PUBLIC WORKS

SEWER PLAN AND PROFILE
 WETHERLY STREET
 VICTORIA WOODS UNIT 2

REVISION		
MARK	DATE	DESCRIPTION

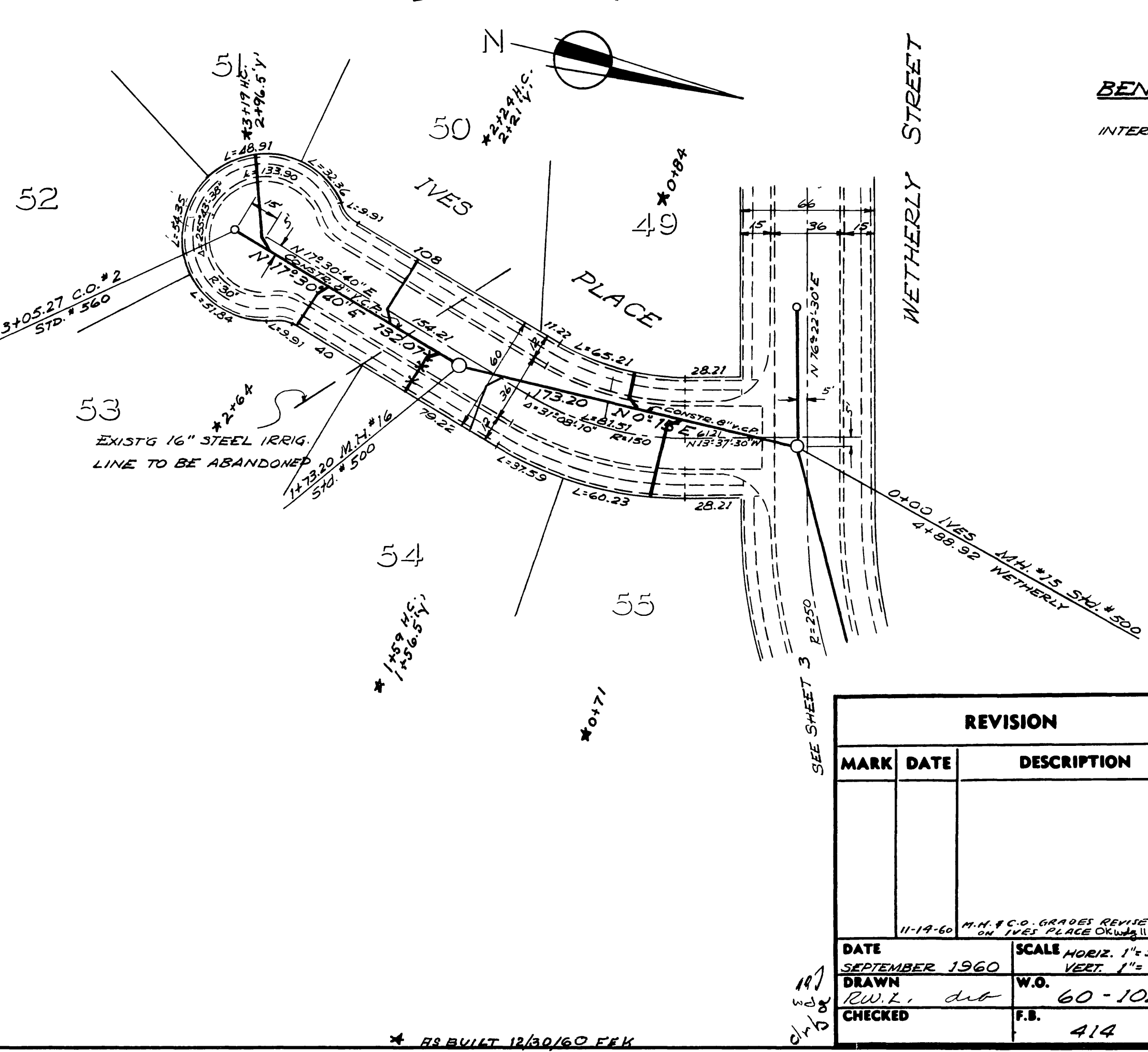
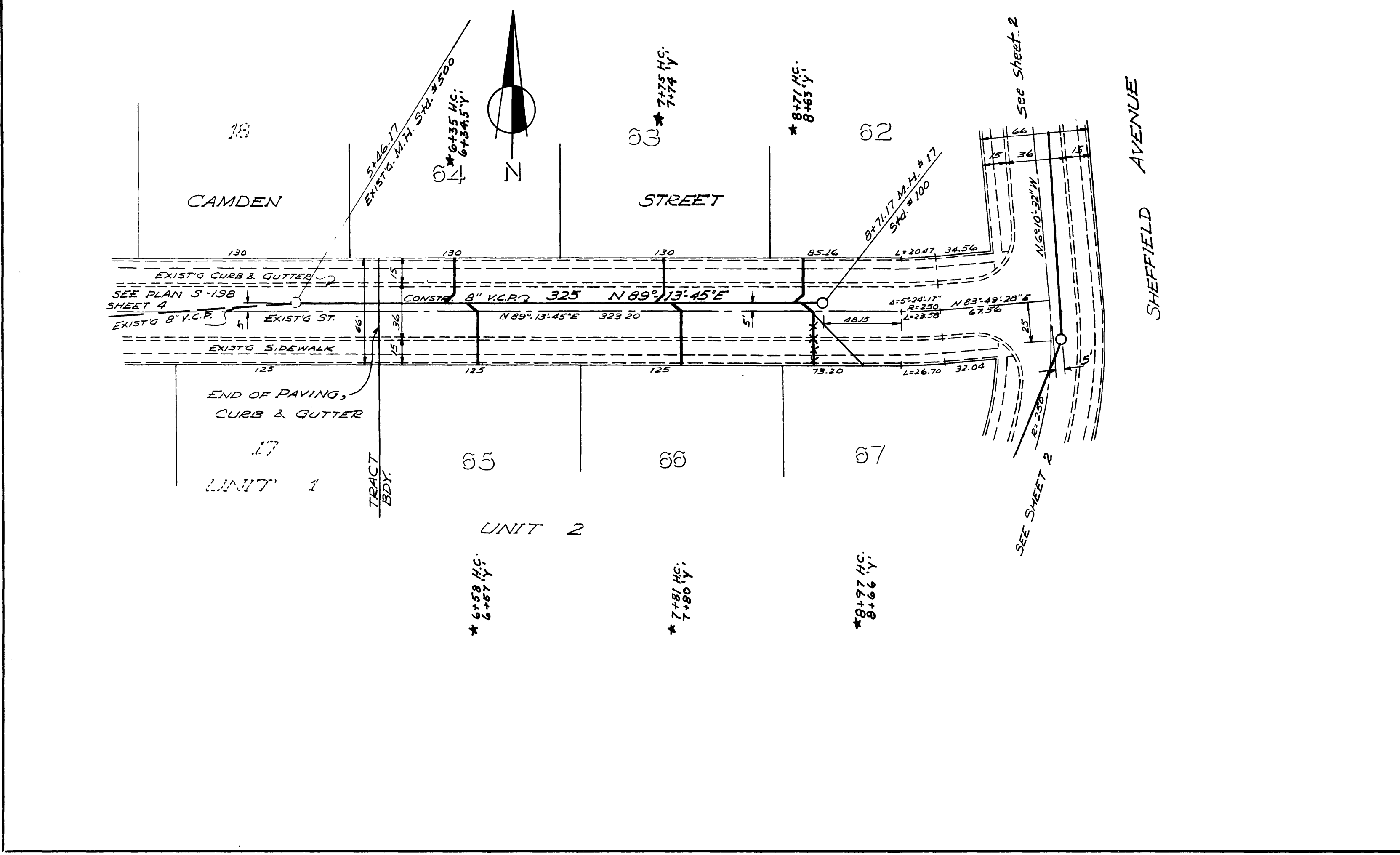
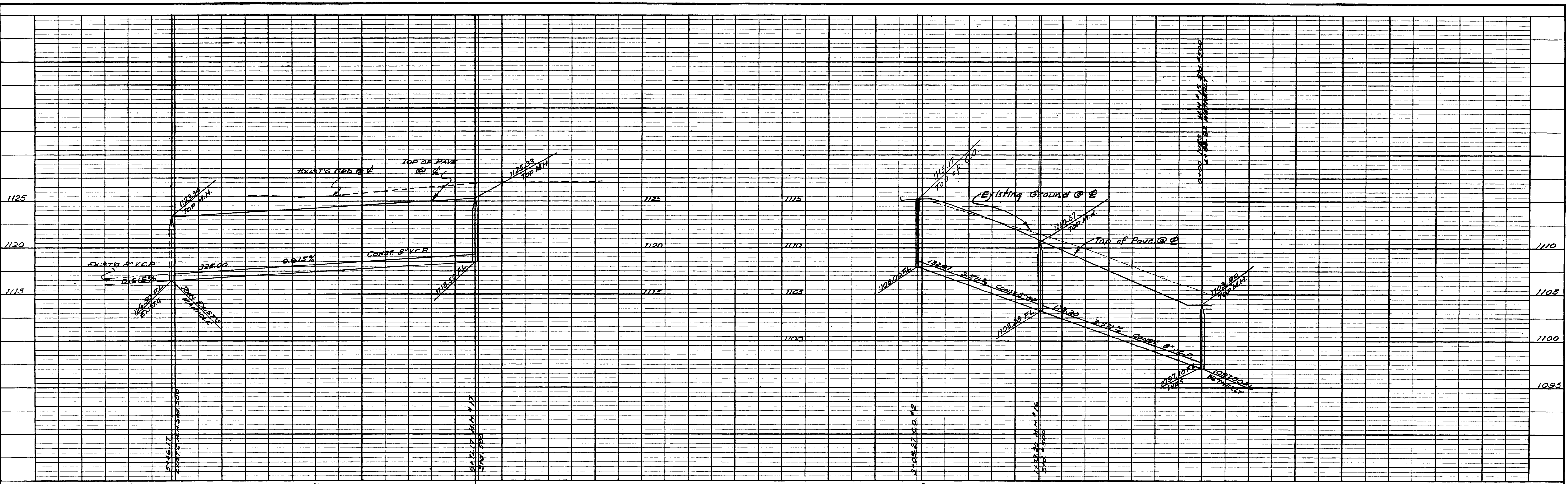
DATE SEPTEMBER 1960
 DRAWN R.W.L. dw
 CHECKED F.B.
 SCALE HORIZ 1"=50'
 VERT 1"=5'
 W.O. 60-102
 F.B. 414

APPROVED BY *Albert A. Webb*
 DIRECTOR OF PUBLIC WORKS
 DATE 10-5-60
 NO. S-250
 SHEET 3 OF 4

*#S BUILT 12/30/60 FEK

PROFILE
 SURVEYED
 PLOTTED GREEN
 BY M. J. NOTED
 STRUCTURE NO. AT NSCH 40

PLAN
 SURVEYED
 PLOTTED GREEN
 BY M. J. NOTED
 STRUCTURE NO. AT NSCH 40



BENCH MARK:
 SPIKE IN P.R. # 8805-J 100' NORTH OF
 INTERSECTION OF BENEDICT & GLENHAVEN
 ELEV. 1089.66 P.B. 4/4/16

REVISION MARK DATE DESCRIPTION		ALBERT A. WEBB ASSOCIATES CIVIL ENGINEERS - RIVERSIDE, CALIFORNIA APPROVED: <i>Albert A. Webb</i> DATE 7/13/60 R.I. 3876
DATE SEPTEMBER 1960 DRAWN W.O. CHECKED F.B.		
SCALE HORIZ. 1" = 50' VERT. 1" = 5'		CITY OF RIVERSIDE, CALIFORNIA DEPARTMENT OF PUBLIC WORKS SEWER PLAN AND PROFILE CAMDEN ST. & IVES PL. VICTORIA WOODS UNIT 2
APPROVED BY: <i>W.O.</i> DIRECTOR OF PUBLIC WORKS		
DATE 10-5-60		NO. S-250 SHEET 4 OF 4

PROFILE	DATE
NOTED	
PLANNED	
CHECKED	
STRUCTURE NOTING	

PLAN	DATE
NOTED	
PLANNED	
CHECKED	
STRUCTURE NOTING	