

SCALE
 Horiz. = 1" = 50'
 Vert. = 1" = 5'

BENCH MARK

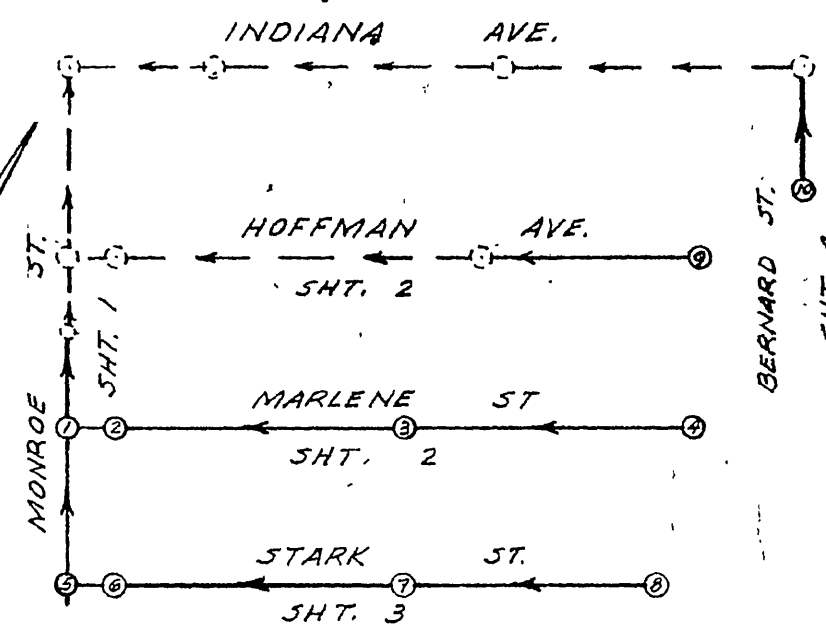
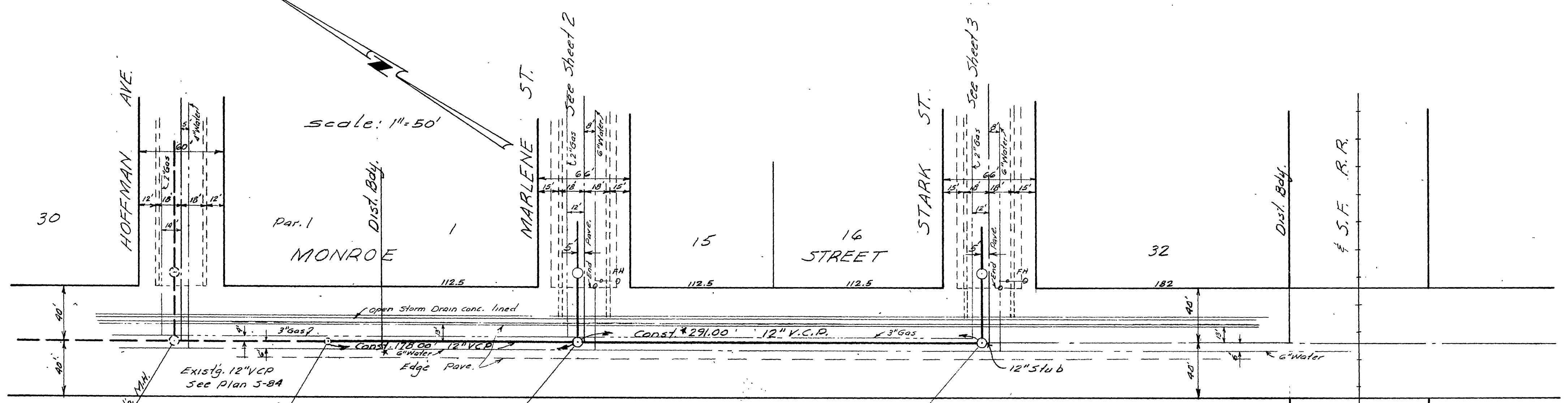
- 1- Spike in RP#12226 - 80'Ely of Indiana & Monroe on North Side of Indiana Elev. 813.99, FB 1911A*3/64.
- 2- PK nail in North Sidewalk of Hoffman at Monroe. Elev. 815.99, FB 1911A*3/64.

GENERAL NOTES

- 1- Construction shall be in accordance with the City of Riverside Department of Public Works, Specifications No. 460 and Standard Dwg.
- 2- House Connection Wyes shall be field located.
- 3- Contractor shall expose flow line of existing cleanout on Monroe St. and notify the Engineer before laying pipe so the Engineer can check the existing flow line elevation of the cleanout.

QUANTITY ESTIMATE

12" Vitrified Clay Pipe	469 lin. ft.
8" Vitrified Clay Pipe	1742 lin. ft.
4" Vitrified Clay Pipe	1274 lin. ft.
8"x4" Wyes	44
Std. 500 Manholes	8
Std. 502 Drop Manholes	2
Concrete Encasement, per Std. 580	16 L.F.
Remove Cleanout	1
Paving Replacement	8245 S.F.



INDEX MAP

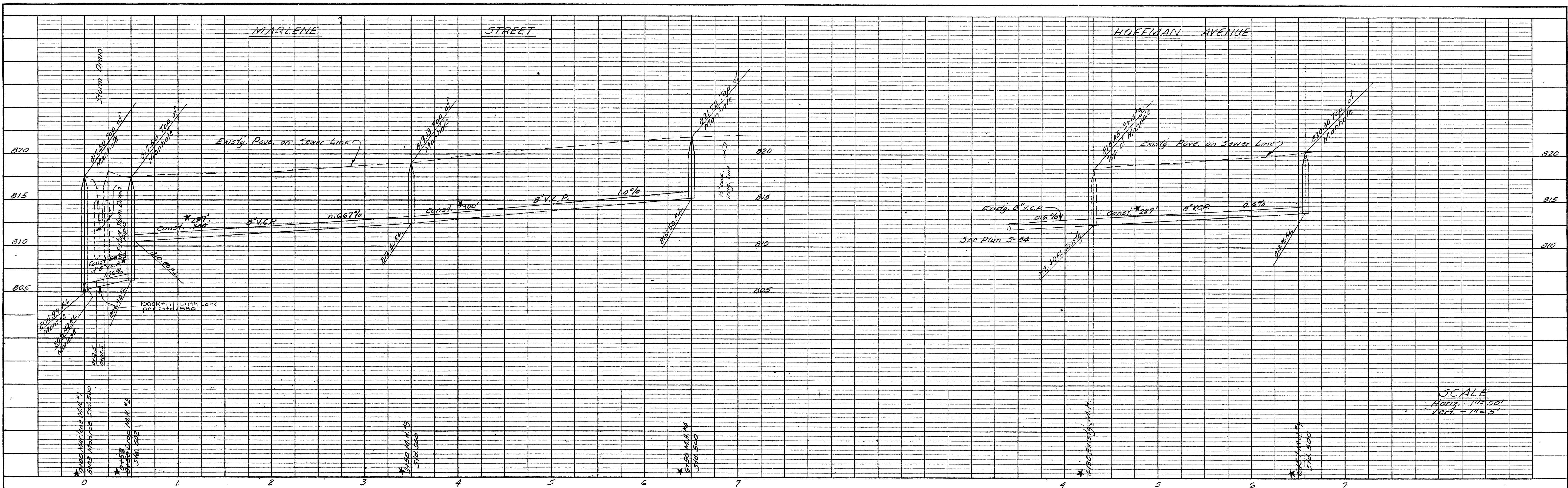
REVISIONS			CITY OF RIVERSIDE CALIFORNIA DEPARTMENT OF PUBLIC WORKS	
MARK	DATE	DESCRIPTION		
*	11-6-61	"As Built" H. Ball	BLOCK HEIGHTS SANITARY SEWER DISTRICT MONROE STREET	
DESIGNED BY	REC	CHECKED BY	APPROVED BY	5-251 SHEET 1 OF 4
DRAWN BY		RE 9876	<i>[Signature]</i> DIRECTOR OF PUBLIC WORKS	
RECOMMENDED BY		ASSISTANT CITY ENGINEER	DATE 3-8-61	

PROFILE

SUBMITTED	BY
NOTED	DATE
GRADES CHECKED	
PLANNED	
ALIGNED	
CHECKED	

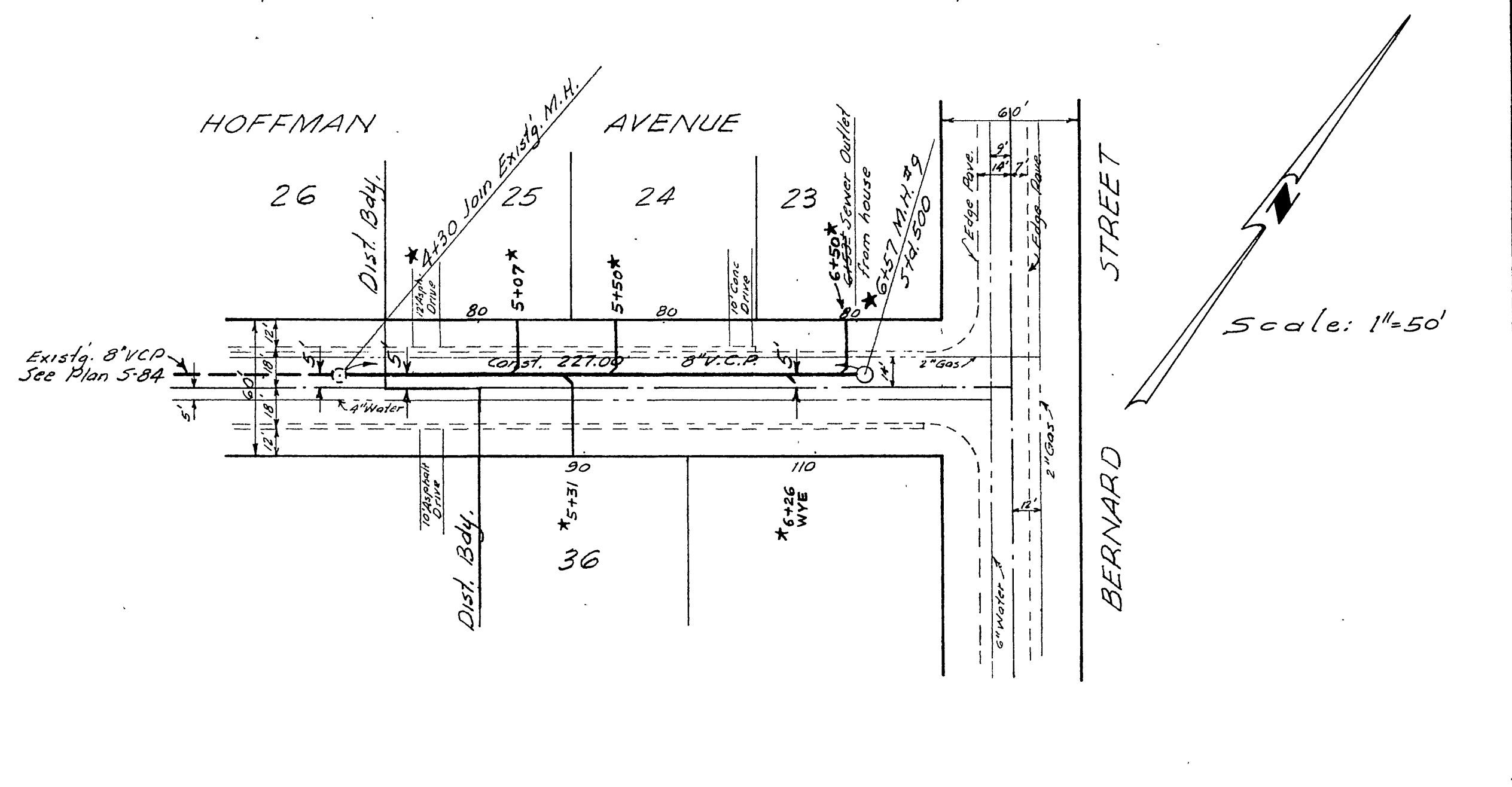
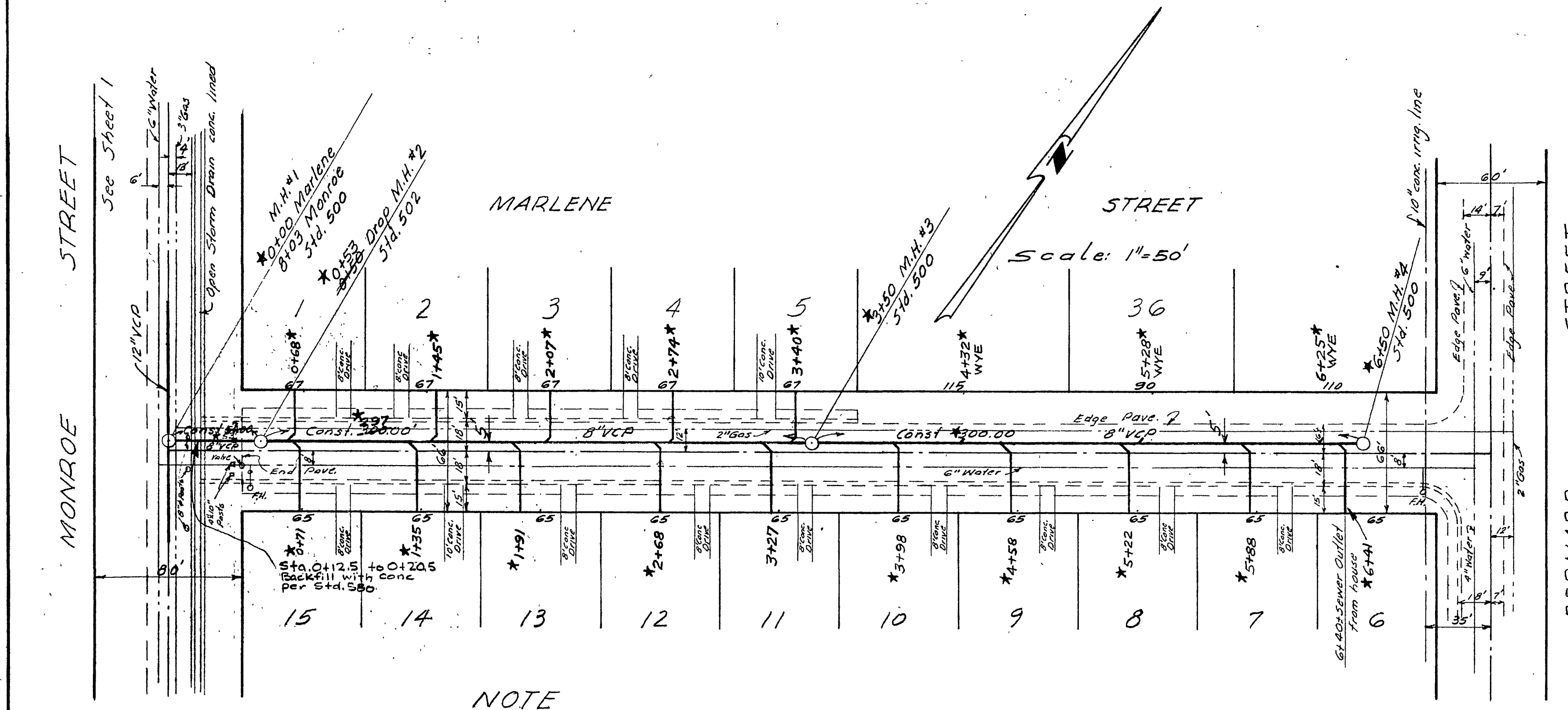
PLAN

SUBMITTED	BY
NOTED	DATE
GRADES CHECKED	
PLANNED	
ALIGNED	
CHECKED	



PROFILE	
SURVEYED	DATE
NOTED	DATE
STRUCTURE NOTATIONS	DATE

SCALE
 Horiz. - 1" = 50'
 Vert. - 1" = 5'

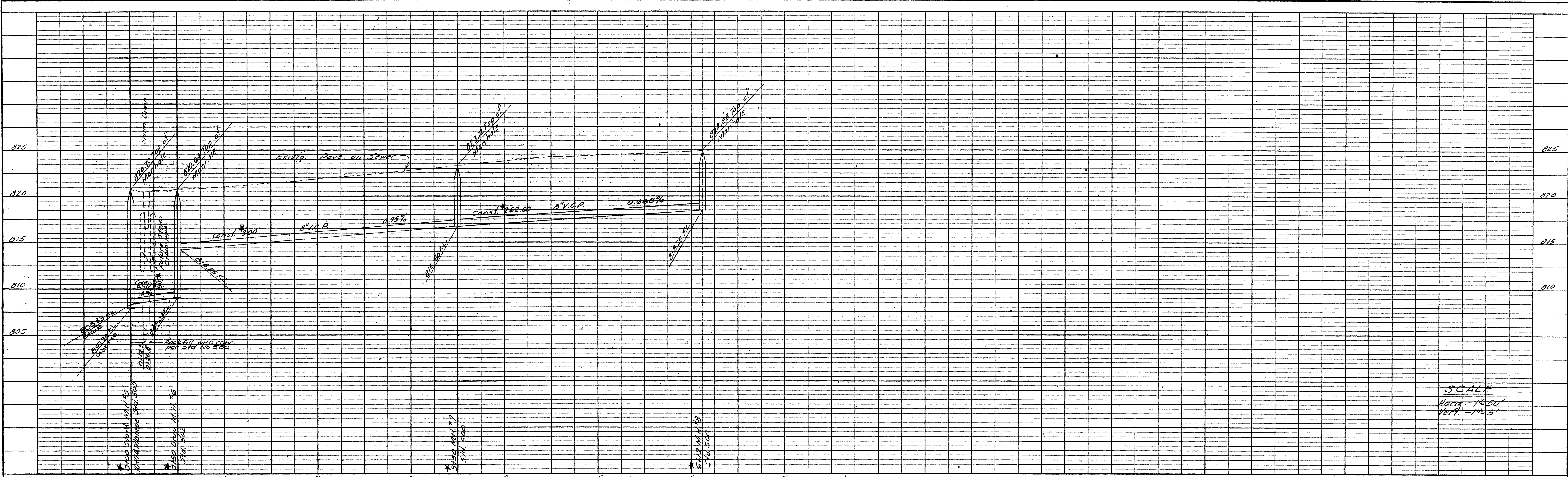


NOTE
 Contractor shall take all precautions necessary to insure that water carried in Monroe St. storm Drain shall not enter sewer trench.

BENCH MARK
 1- Spike in PP#12226 80'E'y. of Indiana & Monroe on North Side of Indiana. Elev. 813.99. FB 1911A*3/64.
 2- PK nail in North Sidewalk of Hoffman at Monroe. Elev. 815.93. FB 1911A*3/64.

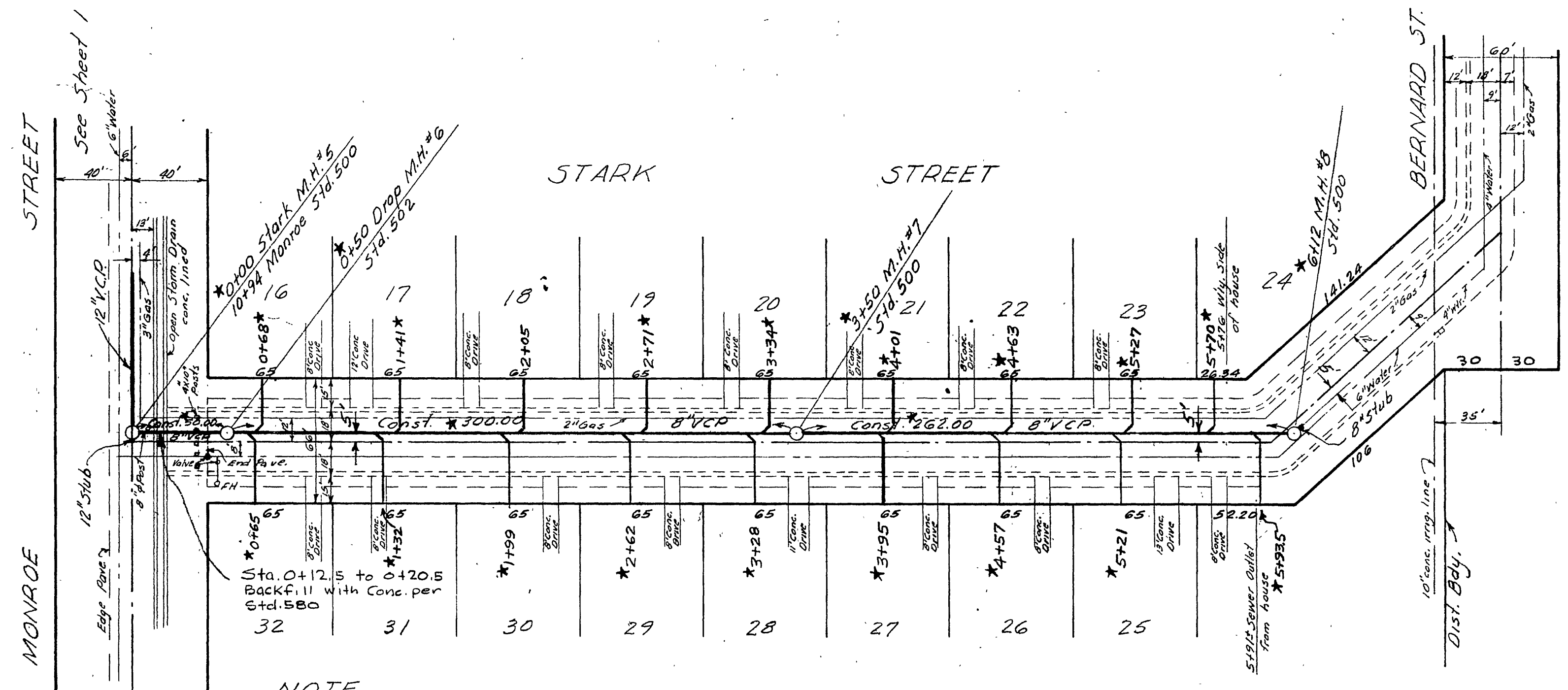
PLAN	
SURVEYED	DATE
NOTED	DATE
ALIGNMENT CHECKED	DATE
RT. OF WAY CHECKED	DATE

REVISIONS			CITY OF RIVERSIDE CALIFORNIA DEPARTMENT OF PUBLIC WORKS	
MARK	DATE	DESCRIPTION	BLOCK HEIGHTS SANITARY SEWER DISTRICT	
*	11-6-61	"As Built" N.Ball		
DESIGNED BY REC			APPROVED BY	
DRAWN BY			DIRECTOR OF PUBLIC WORKS	
RECOMMENDED BY			DATE 3-8-61	
ASSISTANT CITY ENGINEER			SHEET 2 OF 4	



PROFILE	
SURVEYED	BY
NOTED	DATE
DATE	

SCALE
 HORIZ. - 1"=50'
 VERT. - 1"=5'

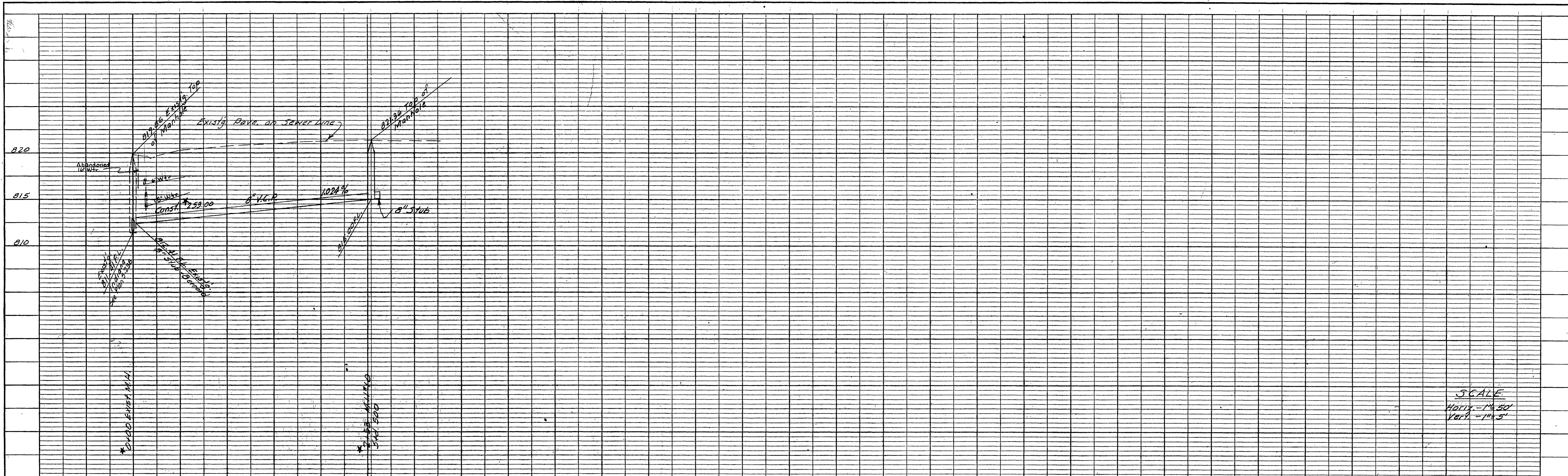


- BENCH MARK**
- 1.- Spike PP #12226 80'E'y. of Indiana & Monroe on North Side of Indiana. Elev. 813.99. FB 1911A*3/64.
 - 2.- PK nail in North Sidewalk of Hoffman at Monroe. Elev. 815.93. FB 1911A*3/64.

PLAN	
SURVEYED	BY
NOTED	DATE
DATE	

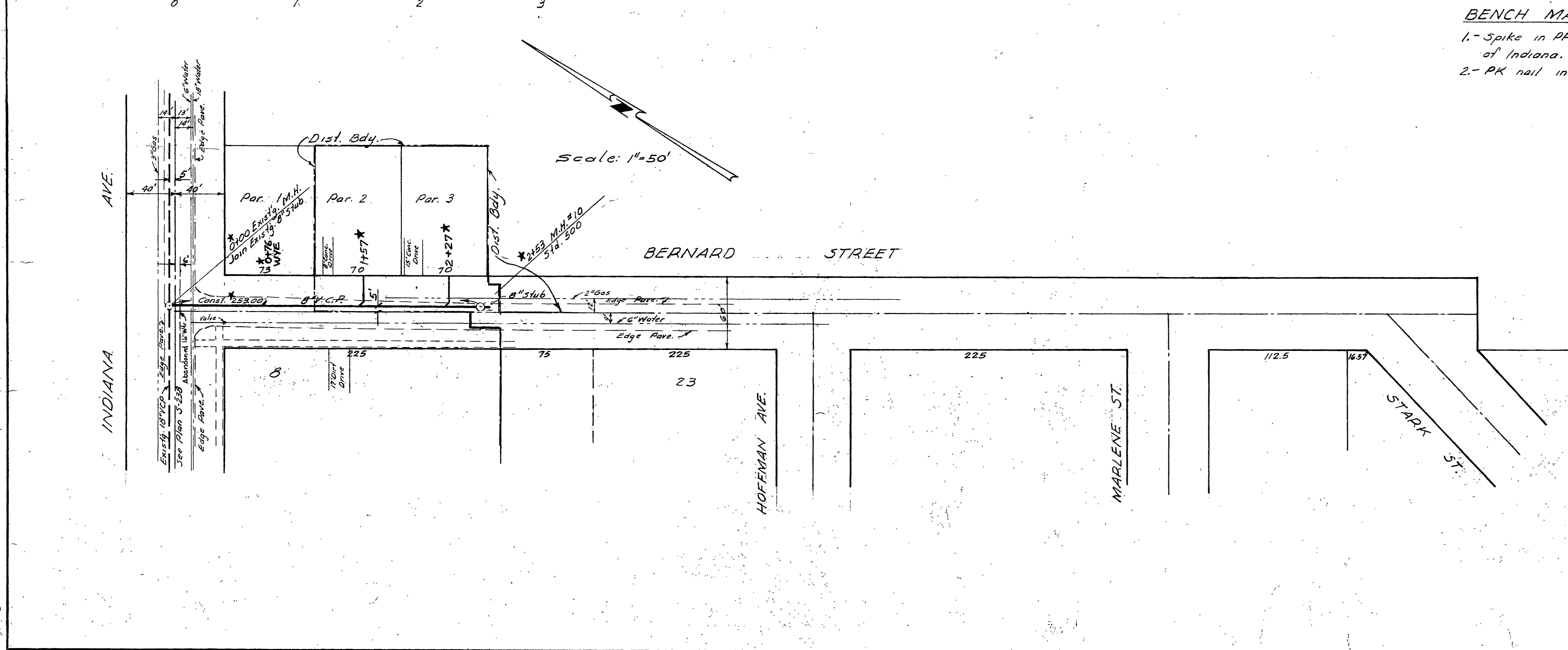
NOTE
 Contractor shall take all precautions necessary to insure that water carried in Monroe St. Storm Drain shall not enter sewer trench.

REVISIONS			CITY OF RIVERSIDE CALIFORNIA DEPARTMENT OF PUBLIC WORKS	
MARK	DATE	DESCRIPTION	BLOCK HEIGHTS SANITARY SEWER DISTRICT STARK STREET	
*	11-6-61	"As Built" H. Ball		
DESIGNED BY	REC	CHECKED BY	APPROVED BY	5-251
DRAWN BY			DIRECTOR OF PUBLIC WORKS	
RECOMMENDED BY		ASSISTANT CITY ENGINEER	DATE 3-9-61	



SCALE
 Horiz. - 1" = 50'
 Vert. - 1" = 5'

- BENCH MARK**
- 1.- Spike in PP*12226 80'Ely. of Indiana & Monroe on North Side of Indiana. Elev. 813.99. FB1911A*3/64.
 - 2.- PK nail in North Sidewalk of Hoffman at Monroe. Elev. 815.93. FB1911A*3/64.



REVISIONS			CITY OF RIVERSIDE CALIFORNIA DEPARTMENT OF PUBLIC WORKS	
MARK	DATE	DESCRIPTION		
*	11-6-61	"As Built" N. Ball	BLOCK HEIGHTS SANITARY SEWER DISTRICT	
			BERNARD STREET	
DESIGNED BY	REC	CHECKED BY	APPROVED BY	5-251 SHEET 4 OF 4
DRAWN BY		RE 3078	DIRECTOR OF PUBLIC WORKS	
RECOMMENDED BY		ASSISTANT CITY ENGINEER	DATE 3-9-61	

PROFILE

DATE	BY
12/23/31	
1-4-60	

NOTE BOOK NO. 1212/3
 DRAWN BY B. M. NOTO
 STRUCTURE NOTATIONS CHECKED

PLAN

DATE	BY
12/23/31	
1-4-60	

NOTE BOOK NO. 1212/3
 DRAWN BY B. M. NOTO
 PLAN CHECKED BY