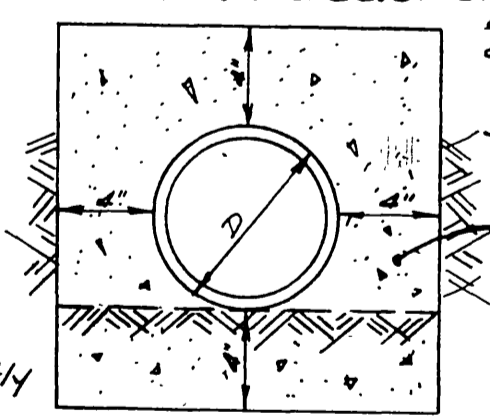


BENCH MARK:
 SPIKE IN PP # 8805-3 100 North
 of intersection of Benedict Ave. &
 Glenhaven Dr. Elev. 1089.66 F.B. 4/16

GENERAL NOTES

1. House connection wyes shall be located in field.
2. Construction shall be in accordance with the Specification of the City of Riverside No. 460, Department of Public Works.
3. All trees on Benedict Ave. are to be removed by rough grading contractor prior to sewer construction.
4. Contractor shall uncover pipe at Station 1+75.29 and notify engineer so that vertical and horizontal position may be verified prior to any construction.
5. Manhole Frame & Cover per Std. Dwg. No. 540



CLASS "D" CONCRETE

NOTE:
 Cornwall Ave. (formerly St. Lawrence Ave.) was accepted as Benedict Ave. by City Council Res. No. 8761 dated Aug. 23, 1960. The named was subsequently changed to Cornwall Ave. by City Council Resolution No. 8978.

FULL ENCASUREMENT
 NO SCALE

NOTE: WYES SHOWN ON THIS SHEET ARE TO BE INCLUDED IN THIS CONTRACT.
 ORANGE TREES SHOWN THIS + *AS BUILT SEWERS 4/18/61 FKH

QUANTITY ESTIMATE

8" VITRIFIED CLAY PIPE	1325 LF
4" VITRIFIED CLAY PIPE	165 LF
18" x 4" WYES	2 LF
MANHOLES - STD. 500	4
CLEANOUTS - STD. 500	4
CHIMNEYS - STD. 500	1
DROP MANHOLE - STD. 500	1
CLASS "D" CONCRETE	75 LF
ENCASUREMENT 8" V.C.P.	75 LF
ORANGE TREES TO REMOVE	14 EA.

REVISION	
MARK	DESCRIPTION
△	11-7-60 Orange trees shown along Sewer Easement
△	1-18-61 Cor. Plan to Adapt for City Contract No. 299 a 27
△	8-20-61 Approved by City Engineer

ALBERT A. WEBB ASSOCIATES
 CIVIL ENGINEERS - RIVERSIDE, CALIFORNIA
 APPROVED *Albert A. Webb* DATE 7/13/60
 BY *Albert A. Webb* DATE

CITY OF RIVERSIDE, CALIFORNIA
 DEPARTMENT OF PUBLIC WORKS

VICTORIA WOODS NO. 2
SEWER EXTENSION
 EASEMENT SOUTH OF HOWE AVE
 FROM ARGYLE WAY TO CORNWALL AVE

NO. S-255

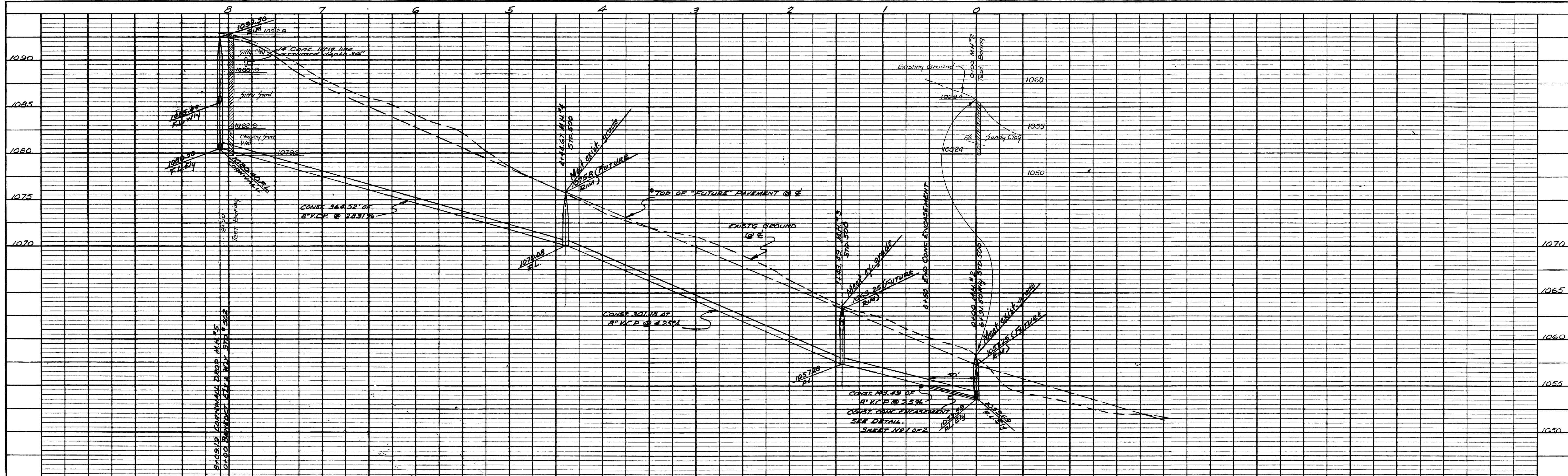
DATE 10-5-60 SHEET 8 OF 8

PROFILE

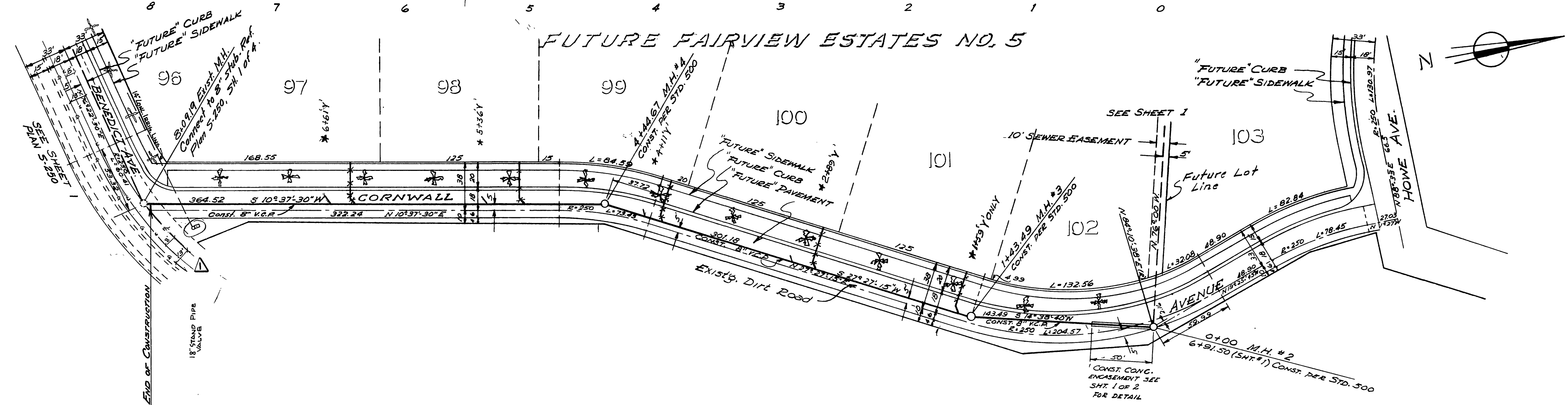
DATE	BY

PLAN

DATE	BY



NO.	REVISION	DATE



BENCH MARK
 SPIKE IN P.P. # 8805-J 100 NORTH OF
 INTERSECTION OF BENEDICT & GLENHAVEN
 ELEV.: 1089.66 F.B. 414/16

NOTE : 1. ALL HOUSE CONNECTIONS SHOWN ON THIS SHEET ARE
 FUTURE INSTALLATIONS AND ARE NOT INCLUDED IN THIS CONTRACT.
 2. WYES SHOWN ON THIS SHEET ARE TO BE CONSTRUCTED
 AS PART OF THIS CONTRACT.

*AS BUILT SEWERS 4/18/61 P.E.K.

ALBERT A. WEBB ASSOCIATES CIVIL ENGINEERS - RIVERSIDE, CALIFORNIA APPROVED: <i>[Signature]</i> DATE 7/13/60 # 2876	
CITY OF RIVERSIDE, CALIFORNIA DEPARTMENT OF PUBLIC WORKS VICTORIA WOODS NO 2 SEWER EXTENSION CORNWALL AVE.	
DATE: SEPTEMBER 1960 DRAWN: R.L. CHECKED:	SCALE: HORIZ. 1"=50' VERT. 1"=5' W.D. 60-102 F.B. 414
APPROVED BY: <i>[Signature]</i> DIRECTOR OF PUBLIC WORKS DATE: 10-5-60	NO. S-255 SHEET 2 OF 2

NO.	REVISION	DATE