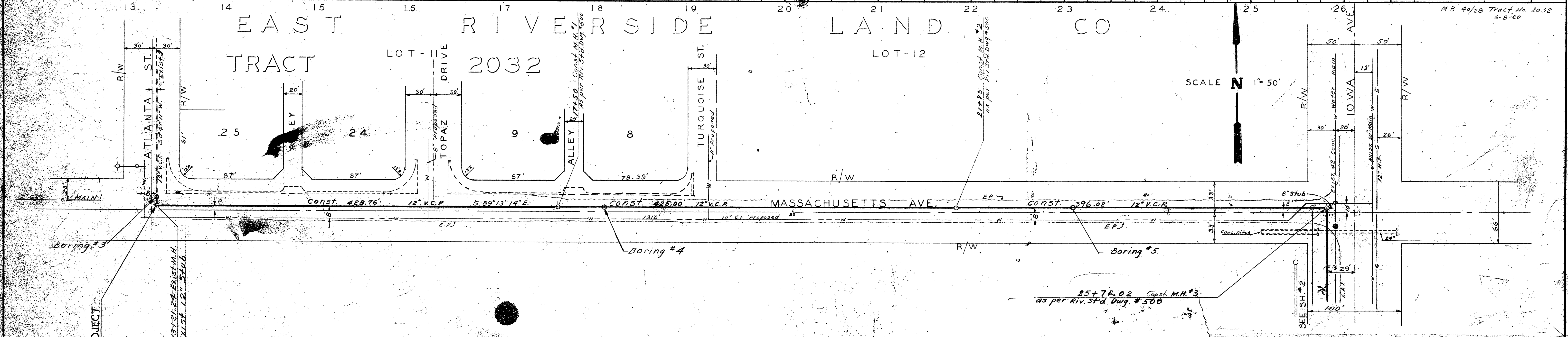


NO.	DATE	BY	REVISIONS

B.M. CHIS II on Wk. Headwall  
 S.W. COR. MASS. & IOWA  
 (5th. End. N.W. Wall)  
 Elev. 963.15  
 F.R. - 5/28-39  
 SCALES: HOR. 1" = 50'  
 VERT. 1" = 5'

MB 40/25 Tract No 2032  
 6-8-60



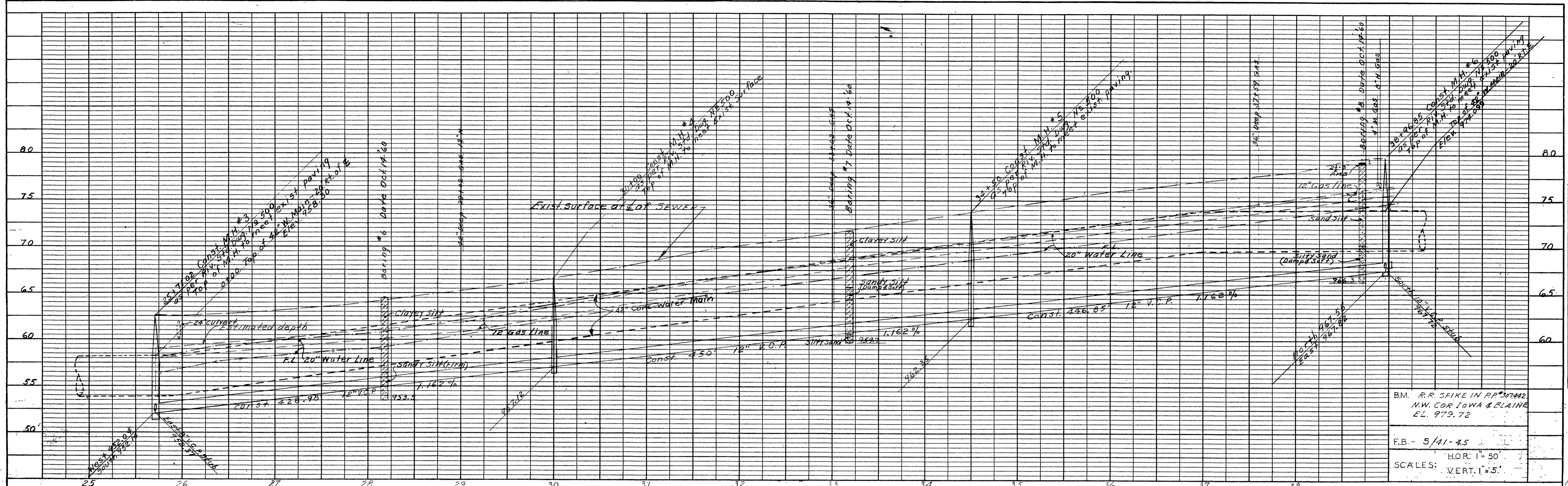
NO.	DATE	BY	REVISIONS

- 1 Location of laterals and wyes to be determined in the field
- 2 All construction to design accordance with City of Riverside Standard Specifications No 460
- 3 Manholes constructed in accordance with Riverside Standard Dwg. No 540 the Contractor shall furnish and install square manhole covers eight inches in diameter by the Atlanta Co. Foundry in Atlanta, Georgia.

REVISIONS		CITY OF RIVERSIDE CALIFORNIA DEPARTMENT OF PUBLIC WORKS
MARK	DATE	
*	Feb 61	AS BUILT

BLAINE STREET TRUNK SEWER #3	
MASSACHUSETTS AVENUE	§ 258



NO.	DATE	BY

BM. R.R. SPIKE IN RP #07442  
 N.W. COR IOWA & BLAINE  
 EL. 979.72

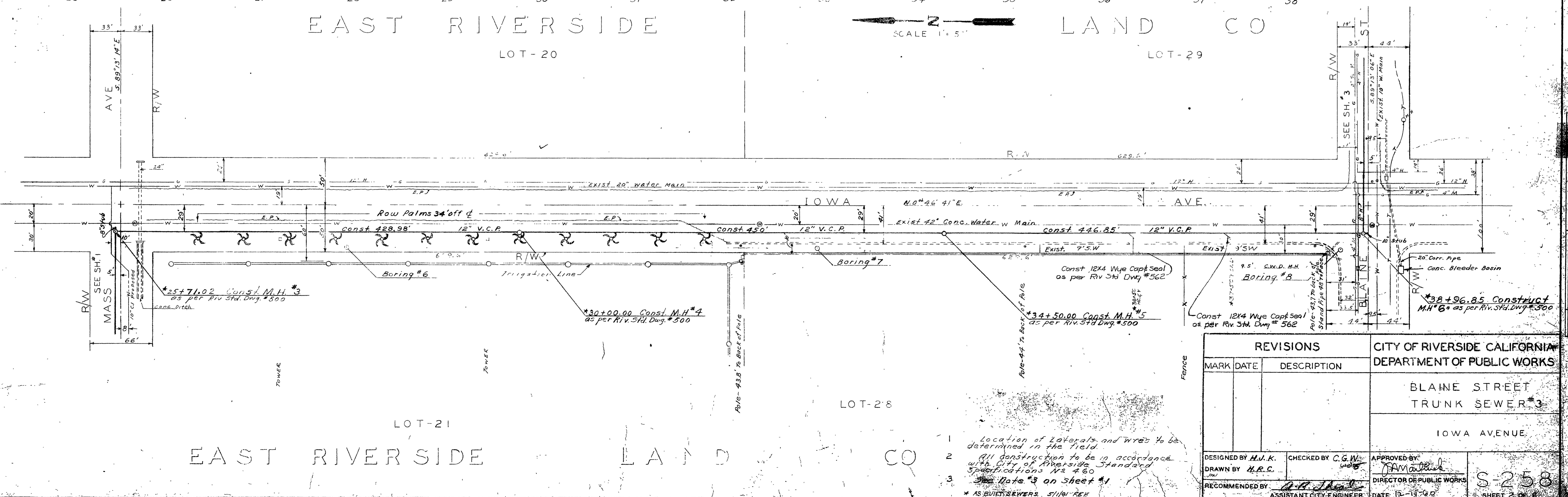
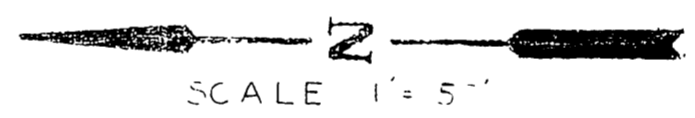
E.B. - 5/41-45

SCALE: HOR. 1"=50'  
 VERT. 1"=5'

EAST RIVERSIDE LAND CO

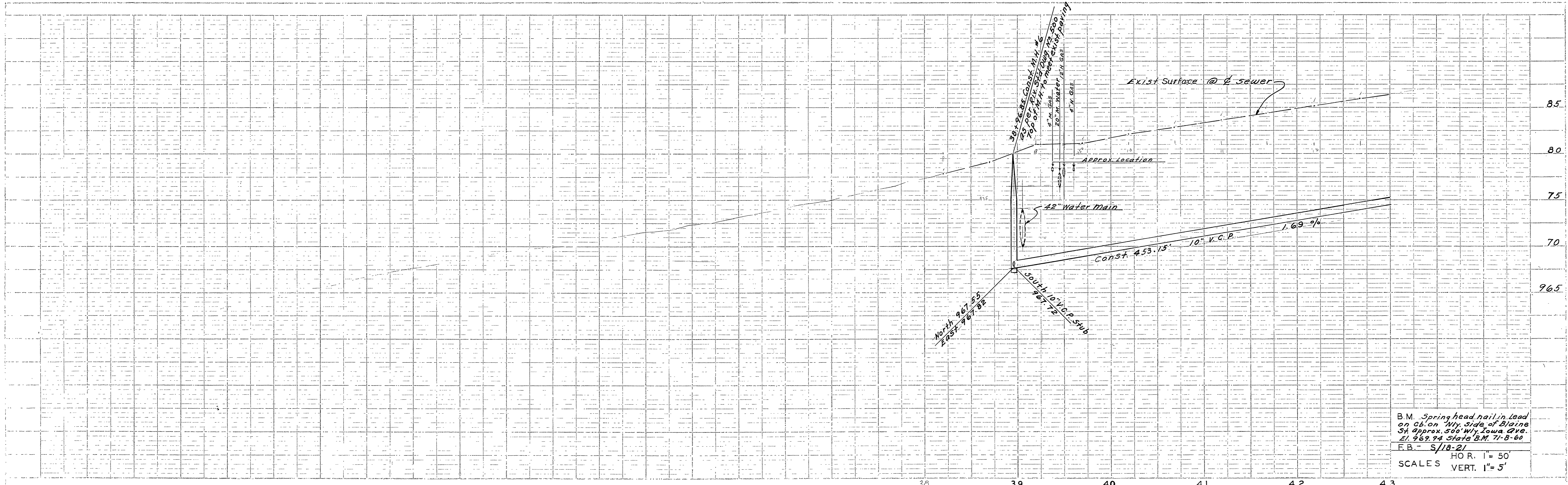
LOT-20

LOT-29

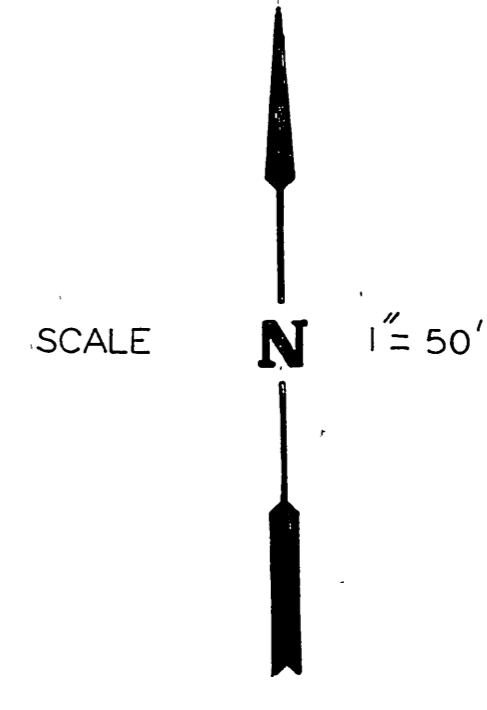
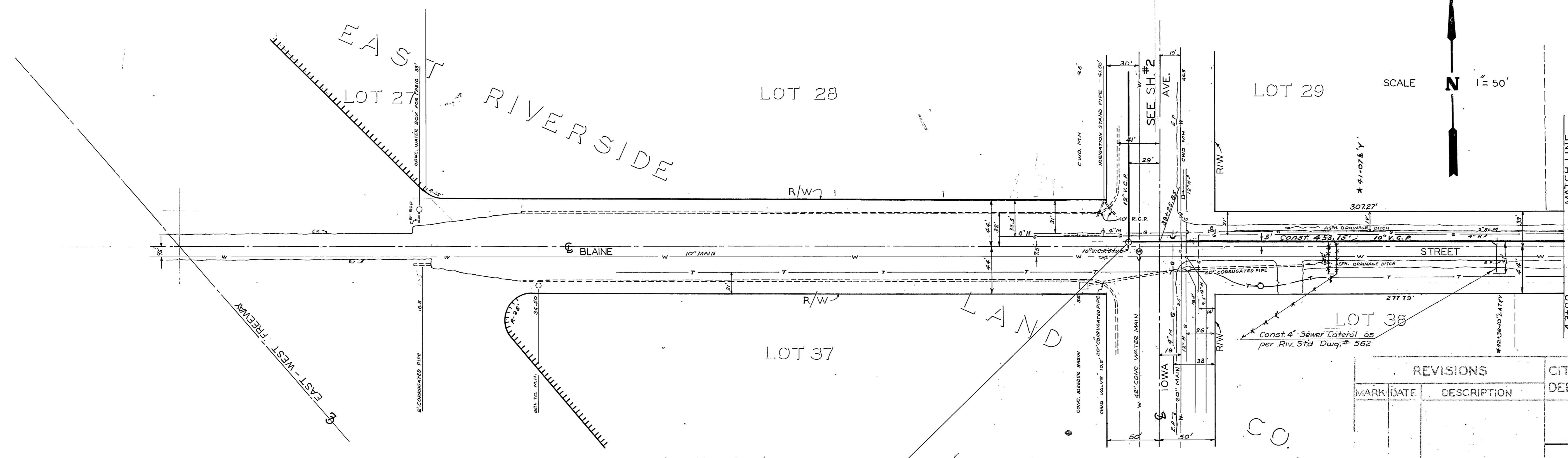


REVISIONS			CITY OF RIVERSIDE CALIFORNIA DEPARTMENT OF PUBLIC WORKS	
MARK	DATE	DESCRIPTION		
1		Location of laterals and wres to be determined in the field.		
2		All construction to be in accordance with Div. of Riverside Standard Specifications No. 480.		
3		Use Note #3 on Sheet #1.		
DESIGNED BY H.W.K.			CHECKED BY C.G.W.	APPROVED BY [Signature]
DRAWN BY H.R.C.			DIRECTOR OF PUBLIC WORKS	
RECOMMENDED BY [Signature]			DATE 11-14-40	
			S-258	
			SHEET 2 OF 3	

1 Location of laterals and wres to be determined in the field.  
 2 All construction to be in accordance with Div. of Riverside Standard Specifications No. 480.  
 3 Use Note #3 on Sheet #1.  
 \* AS BUILT SEWERS 5/10/40



B.M. Spring head nail in lead on cb. on W. side of Blaine St. approx. 500' W. Iowa Ave. 24 967.94 State B.M. 71-0-80  
 F.B. S/18-2/  
 SCALES HOR. 1" = 50'  
 VERT. 1" = 5'

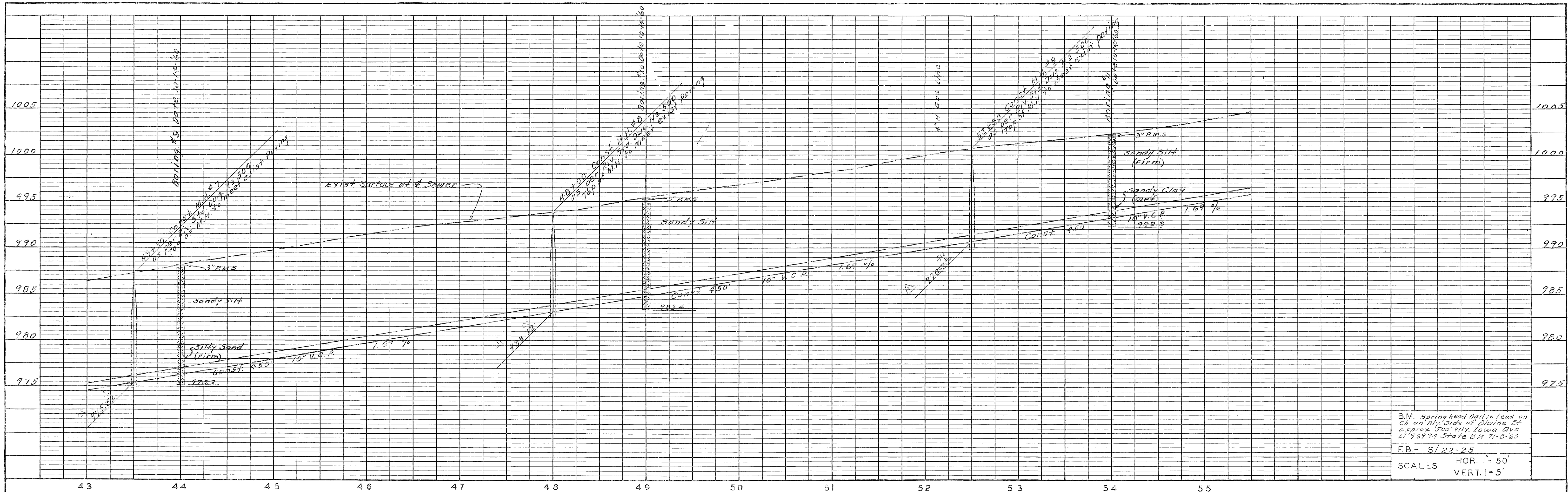


- 1 Location of Laterals and wyes to be determined in the field. 38+96.85 Const. M.H. #6  
as per Riv. Std. Dwg. #500
- 2 All construction to be in accordance with City of Riverside Standard specifications No. 460.
- 3 See Note #3 on Sheet #1.

REVISIONS		CITY OF RIVERSIDE CALIFORNIA DEPARTMENT OF PUBLIC WORKS
MARK	DATE	
		BLAINE STREET TRUNK SEWER #3
		BLAINE STREET

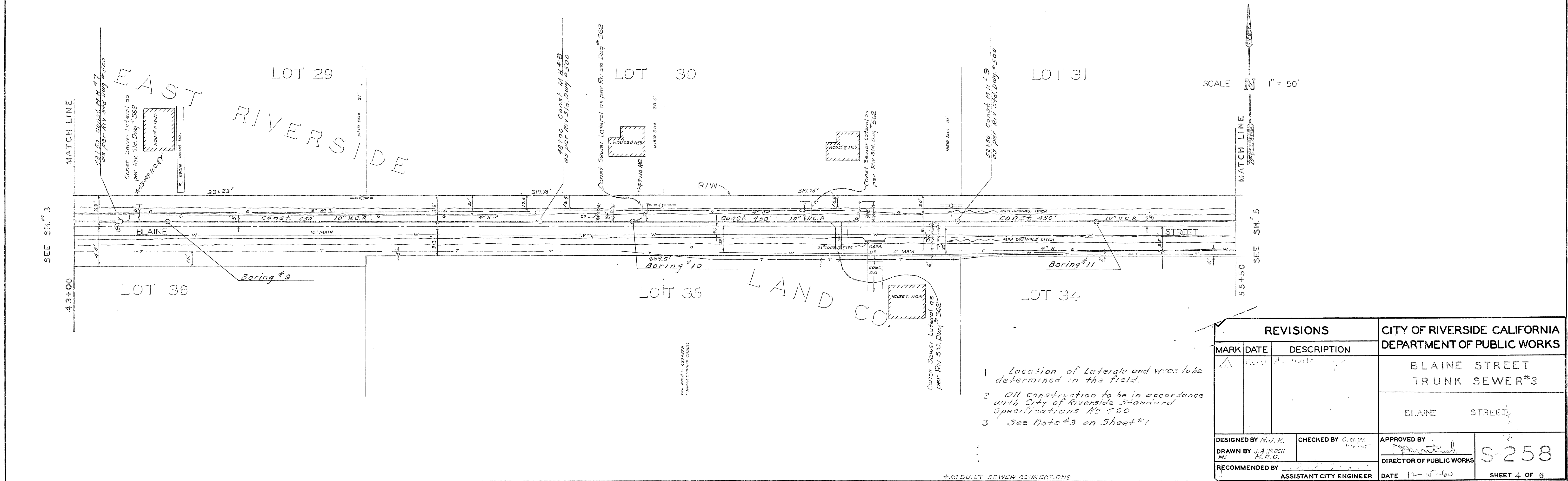
H.J.K.  
 J.A.WLOCH  
 H.R.C.  
 C.G.W.  
 S-258  
 12-15-60  
 3-6

\* AS BUILT SEWERS 5/2/61 FCH



B.M. Spring Head Man in Lead on  
 C&G on N.W. Side of Blaine St.  
 approx. 500' W. of Iowa Ave  
 E/196974 State B.M. 71-B-60  
 F.B. - S/22-25  
 SCALES HOR. 1" = 50'  
 VERT. 1" = 5'

PROFILE	STARTED	BY	DATE
NOTE BOOK NO.	PLANNING CHECKED		
R.M. NOTED	REVISIONS CHECKED		
STRUCTURE NOTATIONS CHG. NO.	RE. OF WAY CHECKED		



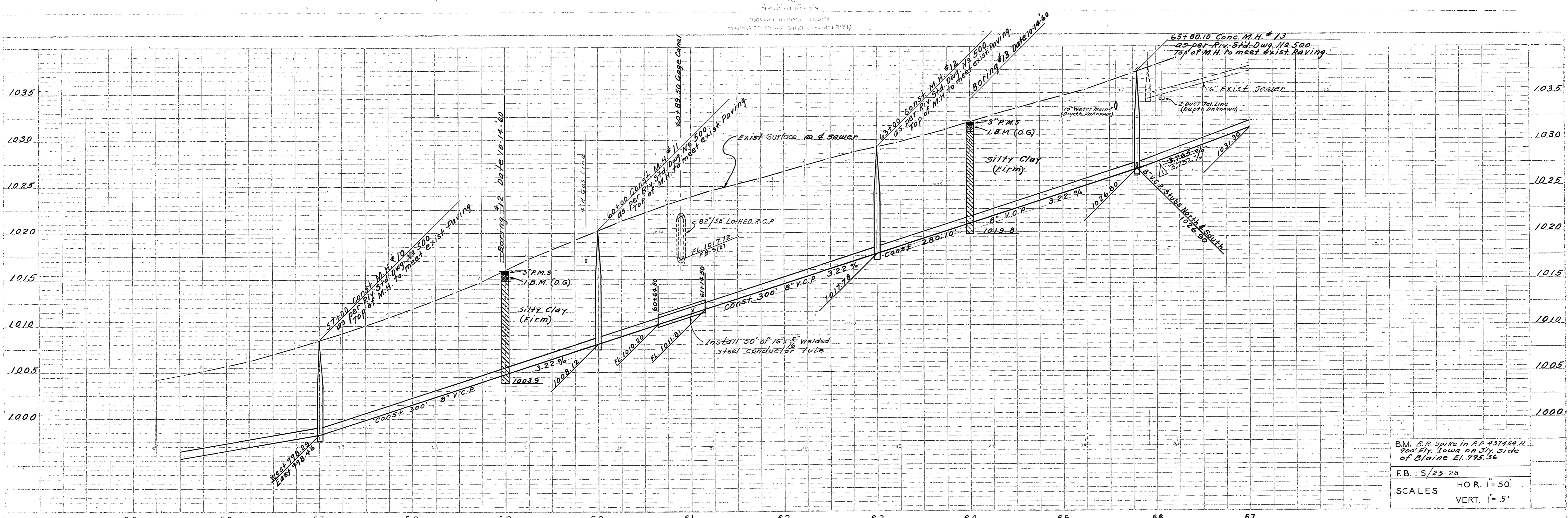
SCALE 1" = 50'

PLAN	STARTED	BY	DATE
NOTE BOOK NO.	PLANNING CHECKED		
RE. OF WAY CHECKED	REVISIONS CHECKED		

REVISIONS			CITY OF RIVERSIDE CALIFORNIA DEPARTMENT OF PUBLIC WORKS	
MARK	DATE	DESCRIPTION		
Δ	12-15-60	As noted	BLAINE STREET TRUNK SEWER #3	
			BLAINE STREET	
DESIGNED BY H.J.K.		CHECKED BY C.G.W.	APPROVED BY <i>[Signature]</i>	
DRAWN BY J.A. WLOCH			DIRECTOR OF PUBLIC WORKS	
RECOMMENDED BY		ASSISTANT CITY ENGINEER	DATE 12-15-60	S-258
				SHEET 4 OF 6

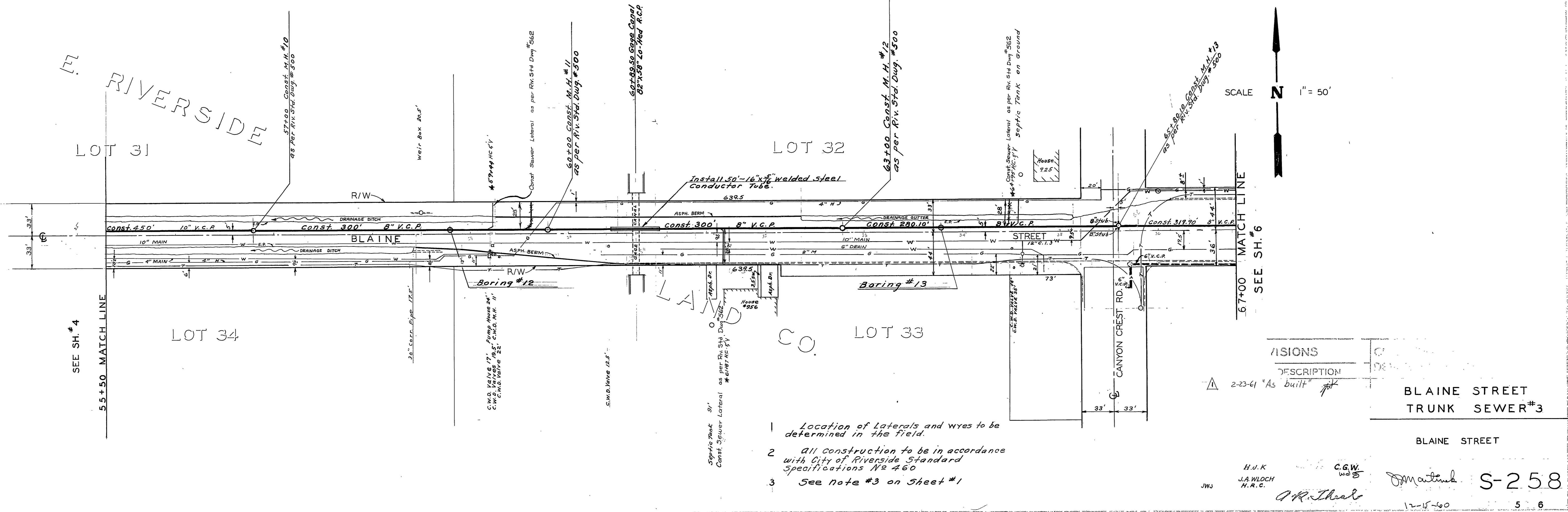
- 1 Location of Laterals and wires to be determined in the field.
- 2 All construction to be in accordance with City of Riverside Standard Specifications No 450
- 3 See Note #3 on Sheet #1

4" RIBBON SEWER CONNECTIONS



B.M. R.R. Spike in P.P. 237454 H  
 900' Ely. Iowa on N.W. side  
 of Blaine El. 995.36  
 F.B. - S/25-28  
 SCALES HOR. 1" = 50'  
 VERT. 1" = 5'

DATE	12-15-60
BY	J.W.J.
CHECKED	C.G.W.
APPROVED	H.R.C.
PROJECT	BLAINE STREET TRUNK SEWER #3
SHEET	5 OF 6



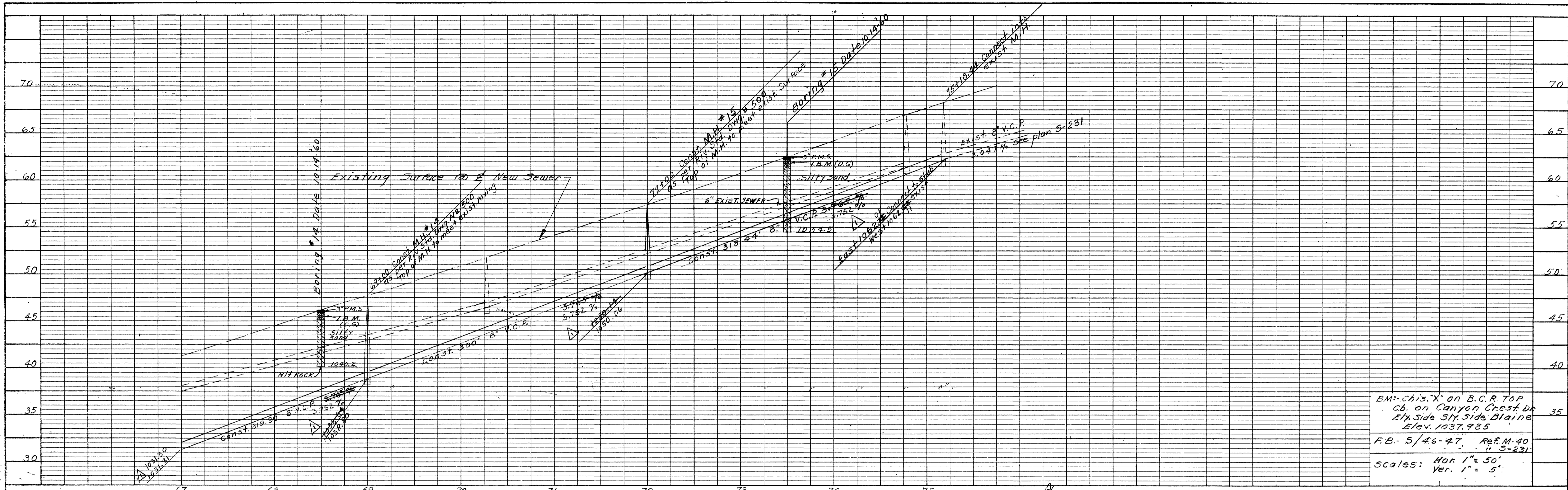
- 1 Location of Laterals and wyes to be determined in the field.
- 2 All construction to be in accordance with City of Riverside Standard Specifications No 460
- 3 See note #3 on Sheet #1

VISIONS	DESCRIPTION
▲	2-23-61 "As built" <i>[initials]</i>

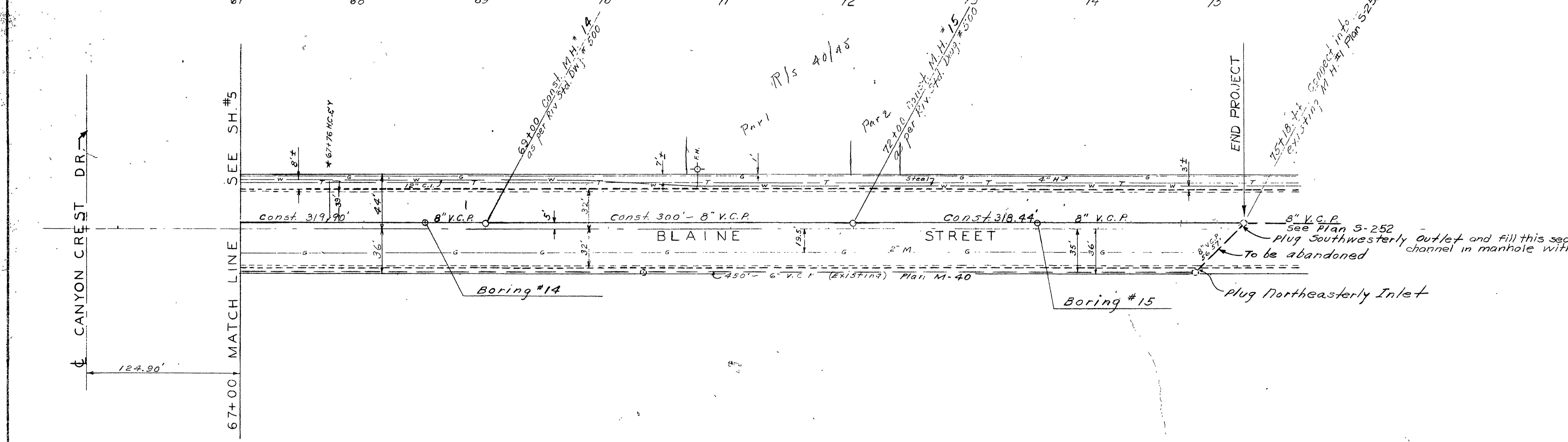
BLAINE STREET TRUNK SEWER #3

BLAINE STREET

J.W.J. H.R.C. C.G.W. *[Signature]* S-258  
 12-15-60 5 6



BM - Chis. X on B.C.R. TOP  
 cb. on Canyon Crest Dr  
 Ely. Side S14 Side Blaine  
 Elev. 1037.985  
 F.B. - S/46-47 Ref. M. 40  
 " S-231  
 Scales: Hor 1" = 50'  
 Ver. 1" = 5'



SCALE N 1" = 50'

REVISIONS			CITY OF RIVERSIDE CALIFORNIA DEPARTMENT OF PUBLIC WORKS	
MARK	DATE	DESCRIPTION		
Δ	2-23-61	"As built"		
			BLAINE STREET TRUNK SEWER#3	
			BLAINE STREET	
DESIGNED BY HJK		CHECKED BY C.G.W.	APPROVED BY [Signature]	
DRAWN BY HRC			DIRECTOR OF PUBLIC WORKS	
RECOMMENDED BY [Signature]		ASSISTANT CITY ENGINEER	DATE 1-15-60	S-258 SHEET 6 OF 6

- 1 Location of Laterals and Wyes to be determined in the field.
- 2 All construction to be in accordance with City of Riverside Standard Specifications N2 460
- 3 See note #3 on Sheet #1

\* As Built Sewer Connections 5/2/61 F.E.L.

PROFILE	
NO.	DATE

PLAN	
NO.	DATE