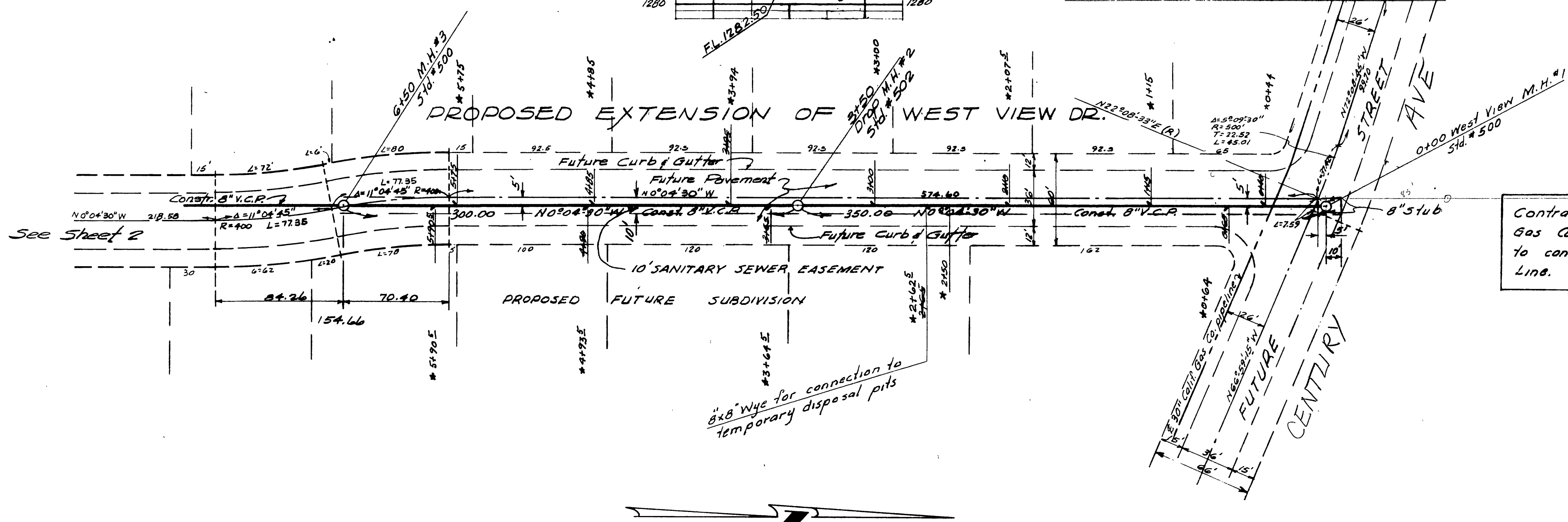


PROFILE	
DATE	
BY	
CHECKED	
NOTED	
REVISIONS	
NO.	

BENCH MARK
 Nail & Tin painted white in existing pavement Alessandro Blvd. of S.W. Corner of property Elev. 1328.58, F.B. 436/13

- GENERAL NOTES**
- 1- House connection wyes shall be located in the field.
 - 2- Construction shall be in accordance with the specifications of the City of Riverside No. 460, Department of Public Works.
 - 3- Maximum vertical spacing of steps in all manholes shall be 12".
 - 4- Lot frontages indicated in area of future subdivision are preliminary only and are subject to revision as may be required by proposed changes to the City of Riverside subdivision and setback ordinances.

PLAN	
DATE	
BY	
CHECKED	
NOTED	
REVISIONS	
NO.	



Contractor shall notify the Southern Counties Gas Co., phone Jasper 9-2889, 48 hours prior to construction in vicinity of 30" 650psi Gas Line.

QUANTITY ESTIMATE

8" Vitrified Clay Pipe	3,610 lin. ft.
4" Vitrified Clay Pipe	1,395 lin. ft.
8"x4" Wyes	64
8"x8" Wyes	1
Std. #500 Manholes	11
Std. #502 Drop Manholes	3
Std. #560 Cleanouts	4

DATE 11-10-60
 APPROVED Plans & Profiles - Sewers
 RIVERSIDE COUNTY DEPARTMENT OF PUBLIC HEALTH
 BY *J. S. [Signature]*
 (See letter)
 "Approval of these plans by the Department of Public Health of Riverside County does not relieve the Engineer or Architect of the responsibility for the Engineering or Architectural design."

Approved November 17, 1960
 By *[Signature]* Deputy
 RIVERSIDE COUNTY ROAD COMMISSIONER

INDEXED B.B.
ALBERT A. WEBB ASSOCIATES
 CIVIL ENGINEERS - RIVERSIDE, CALIFORNIA
 APPROVED *[Signature]* N. Wall DATE 10-29-60
 11 2876

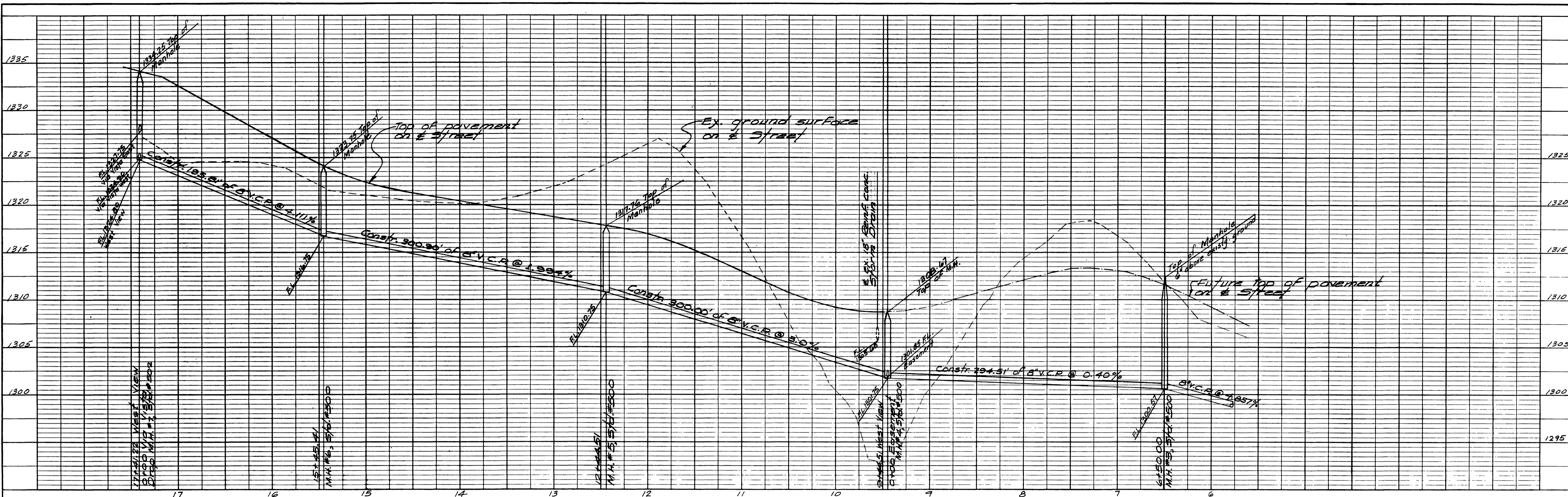
REVISION		CITY OF RIVERSIDE, CALIFORNIA DEPARTMENT OF PUBLIC WORKS
MARK	DATE DESCRIPTION	
	12-8-60	Grade raised between M.H.#1 & M.H.#2. F.B.C. 483

**SEWER PLAN AND PROFILE
 PROPOSED EXTENSION
 WEST VIEW DRIVE
 TRACT NO. 2121**

DATE 10-13-60 SCALE 1"=30' Horiz.
 1"=5' Vert.
 DRAWN F.C.C. 4.17.60 W.O. 60-78
 CHECKED G.B. F.B.

APPROVED BY *[Signature]*
 DIRECTOR OF PUBLIC WORKS
 DATE 11-14-60

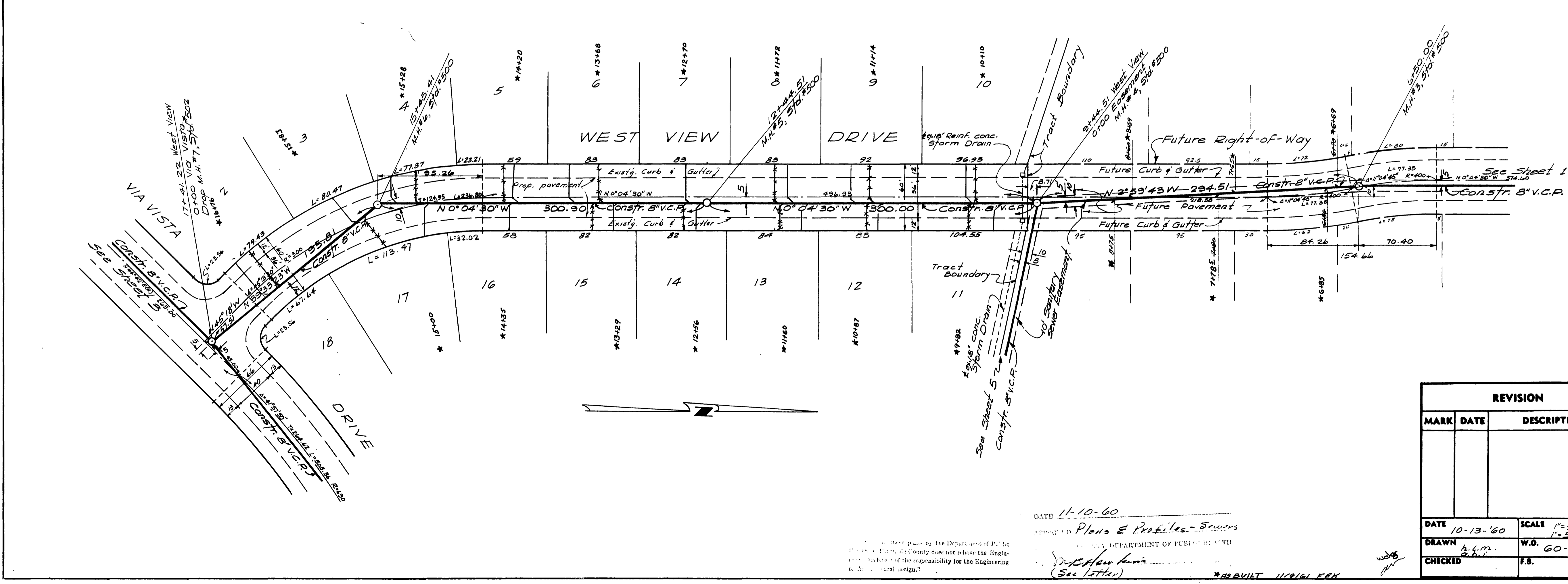
NO. S-259
 SHEET 1 OF 5
 W.O. 60-78-B



PROFILE

NO.	DATE

BENCH MARK
 Nail and Tin painted white in existing pavement Alessandro Blvd. at S.W. corner of property. Elev. 1328.58, F.B. 434/13



PLAN

NO.	DATE

ALBERT A. WEBB ASSOCIATES
 CIVIL ENGINEERS - RIVERSIDE, CALIFORNIA
 APPROVED *Albert A. Webb* DATE 10-29-60
 S. 3076

CITY OF RIVERSIDE, CALIFORNIA
 DEPARTMENT OF PUBLIC WORKS

SEWER PLAN AND PROFILE
 WEST VIEW DRIVE
 TRACT NO. 2121

REVISION		
MARK	DATE	DESCRIPTION

APPROVED BY *W.O. 60-78*
 DIRECTOR OF PUBLIC WORKS
 DATE 11-14-60

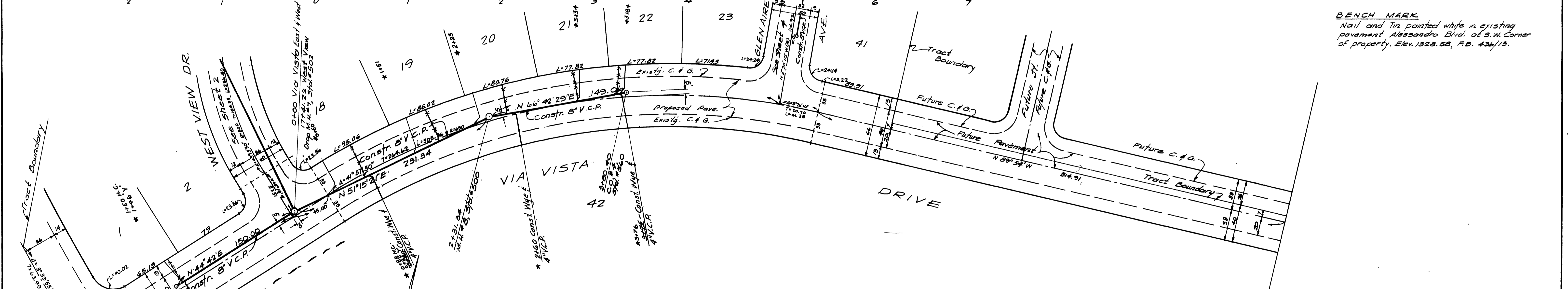
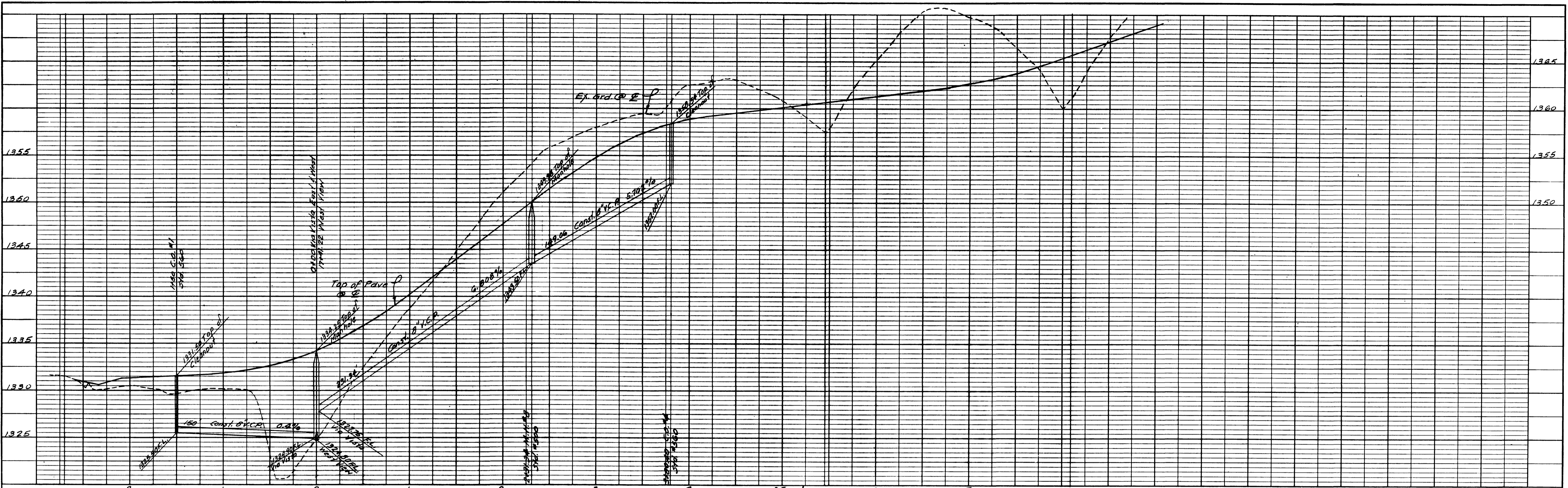
NO S-259

SHEET 2 OF 5
 W.O. 60-78-B

DATE 11-10-60
 DRAWN *W.O. 60-78*
 CHECKED *W.O. 60-78*
 (See letter)

These plans by the Department of Public Works of Riverside County do not relieve the Engineer of his responsibility for the Engineering of the work.

*AS BUILT 11/21/61 EFK



BENCH MARK
 Nail and Tin painted white in existing
 pavement Alessandro Blvd. at S.W. Corner
 of property. Elev. 1325.58, F.B. 434/13.

DATE 11-10-60
 APP. OVED Plans & Profiles - Sewers
 RIVERSIDE COUNTY DEPARTMENT OF PUBLIC HEALTH
 BY J. J. Lawless
 (See letter)

"Approval of these plans by the Department of Public Health of Riverside County does not relieve the Engineer or Architect of the responsibility for the Engineering or Architectural design."

1126/61 FEK
 *82 BUILT SEWER LOCATIONS

REVISION		
MARK	DATE	DESCRIPTION

ALBERT A. WEBB ASSOCIATES
 CIVIL ENGINEERS - RIVERSIDE, CALIFORNIA
 APPROVED Albert A. Webb DATE 10-29-60
 11-2876

CITY OF RIVERSIDE, CALIFORNIA
 DEPARTMENT OF PUBLIC WORKS

SEWER PLAN AND PROFILE
VIA VISTA DRIVE
TRACT NO. 2121

DATE 10-15-60 SCALE 1"=50' Horz.
 DRAWN A.F.P. W.O. 60-78
 CHECKED F.B.

APPROVED BY [Signature]
 DIRECTOR OF PUBLIC WORKS

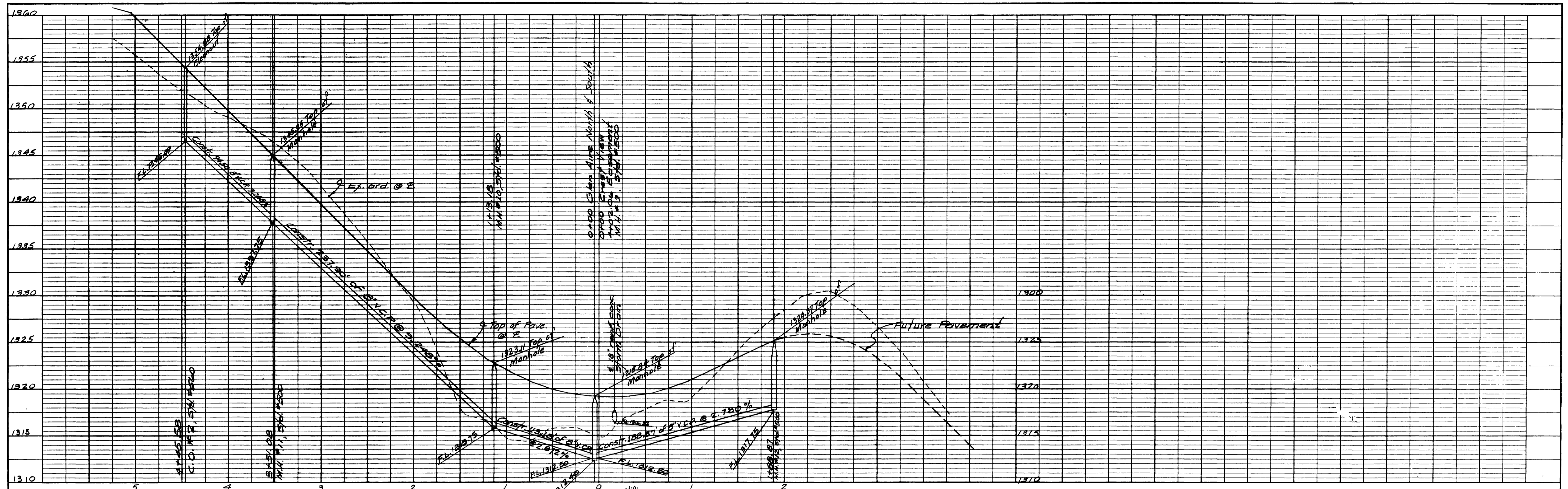
DATE 11-14-60 SHEET 3 OF 5
 W.O. 60-78-B

PROFILE

NO.	DATE	BY

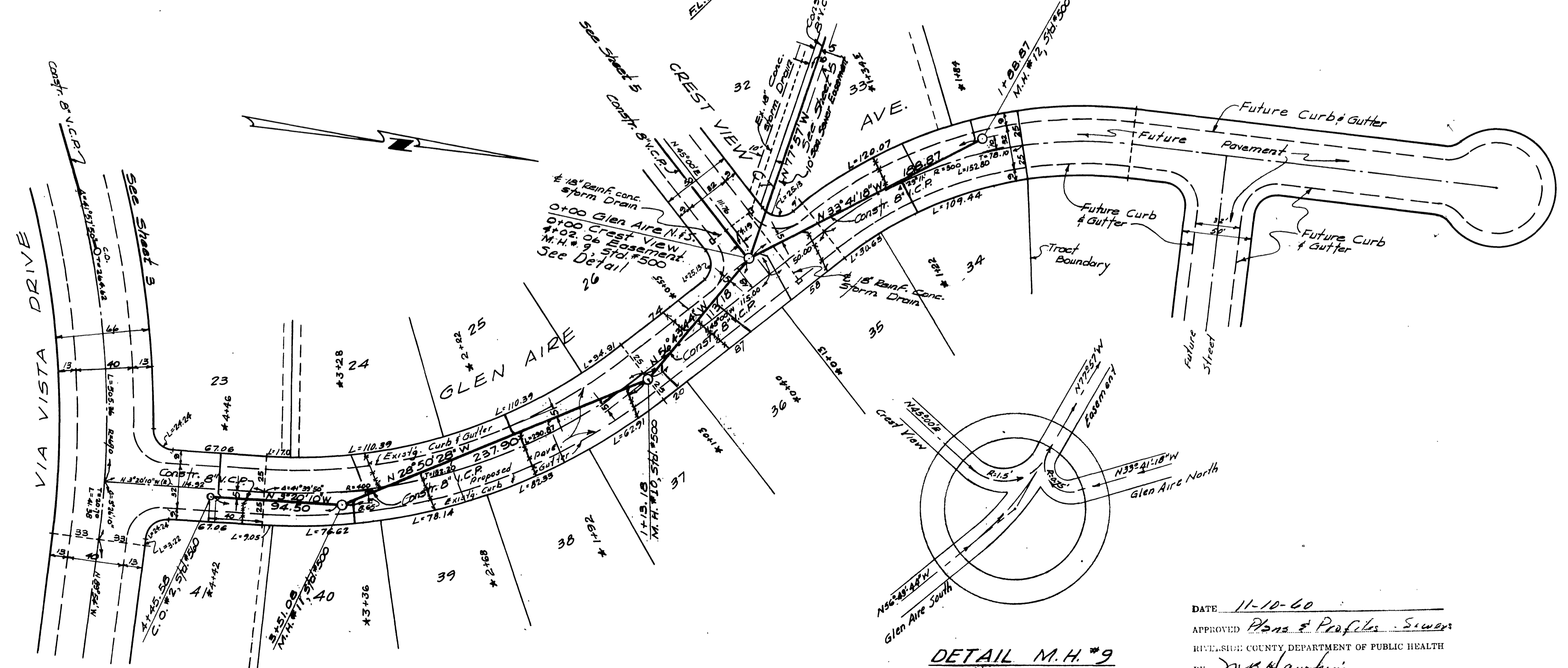
PLAN

NO.	DATE	BY



PROFILE	
NO.	DATE
BY	DATE
NOTED	DATE
CHECKED	DATE
BY	DATE

BENCH MARK:
 Nail and Tin painted white in existing pavement Alessandro Blvd. at S.W. corner of property. Elev. 1328.58, F.D. 436/113.



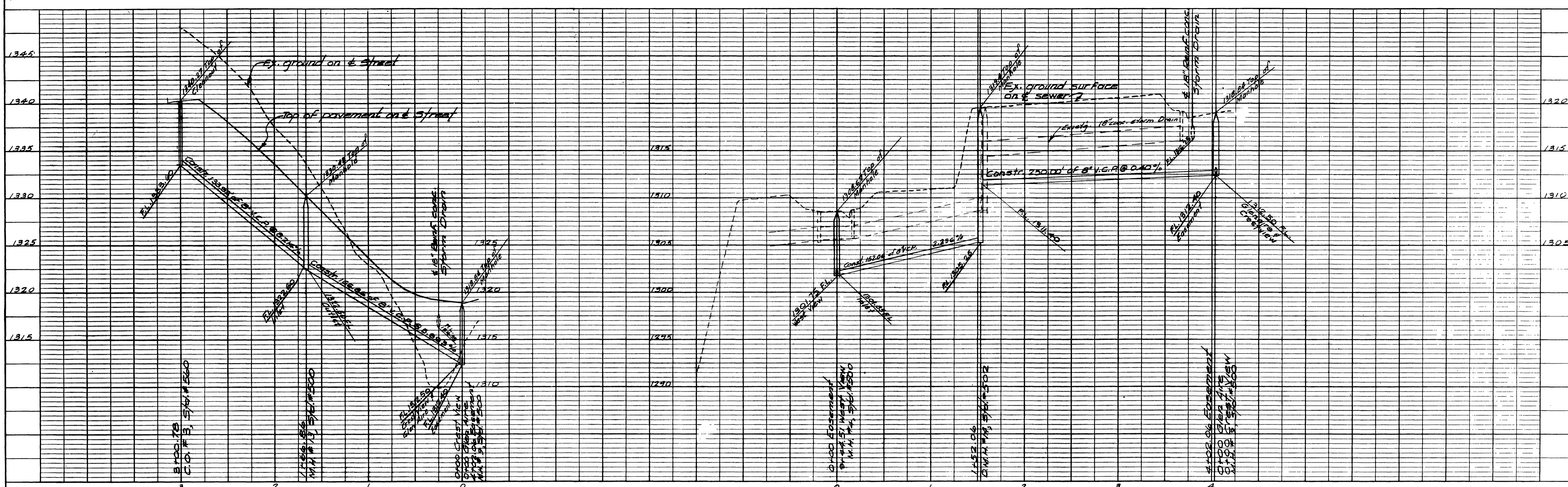
DETAIL M.H. #9
 Scale: 1" = 2'

DATE 11-10-60
 APPROVED Plans & Profiles Sewers
 RIVERSIDE COUNTY DEPARTMENT OF PUBLIC HEALTH
 BY J. B. H. [Signature]
 (See letter)

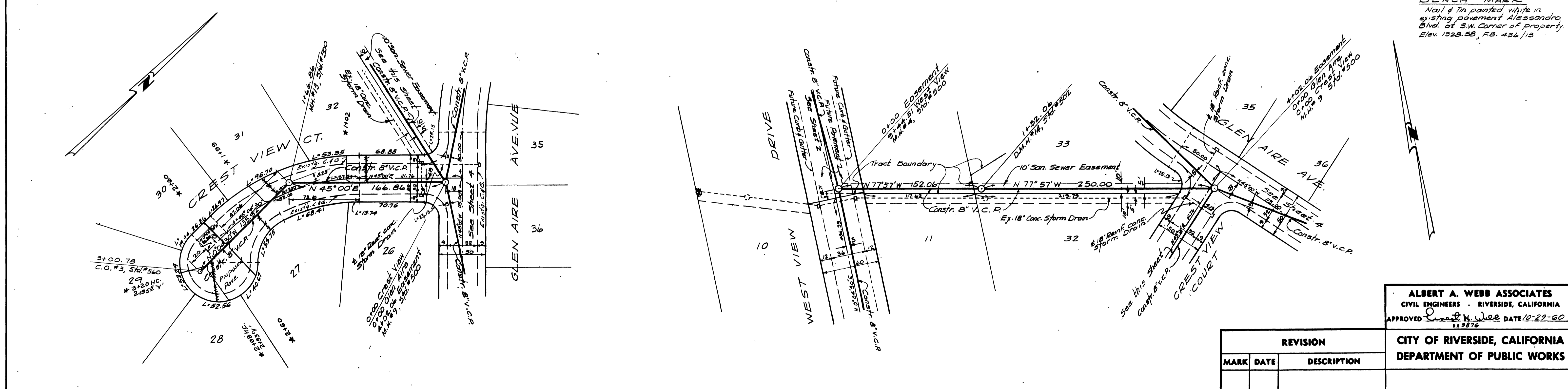
*Approval of these plans by the Department of Public Health of Riverside County does not relieve the Engineer or Architect of the responsibility for the Engineering or Architectural design.

*SEE BUILT SEWER LOCATIONS 11/26/61 EFX

REVISION		ALBERT A. WEBB ASSOCIATES CIVIL ENGINEERS - RIVERSIDE, CALIFORNIA	
MARK	DATE	DESCRIPTION	APPROVED <i>Ernest N. Wall</i> DATE 10-29-60 S.E. 2872
			CITY OF RIVERSIDE, CALIFORNIA DEPARTMENT OF PUBLIC WORKS
			SEWER PLAN AND PROFILE GLEN AIRE AVENUE TRACT NO. 2121
DATE	SCALE	APPROVED BY	NO. S-259
10-13-60	1/320' Horiz. 1" = 5' Vert.	<i>[Signature]</i> DIRECTOR OF PUBLIC WORKS	
DRAWN CHECKED	W.D. F.B.	60-78	
		DATE 11-14-60	SHEET 4 OF 5 W.O. 60-78-B



PROFILE	
NO.	DATE



BENCH MARK
 Nail & Tin painted white in
 existing pavement Alessandro
 Blvd. at S.W. Corner of Property.
 Elev. 1328.58, F.B. 436/13

PLAN	
NO.	DATE

DATE 11-10-60
 APPROVED Plans & Profiles - Sewers
 11 RIVERSIDE COUNTY DEPARTMENT OF PUBLIC HEALTH
 BY J. M. Slawson
 (See letter)
 "Approval of these plans by the Department of Public Health of Riverside County does not relieve the Engineer of his responsibility for the Engineering or Artistic part of the work."

REVISION		
MARK	DATE	DESCRIPTION

ALBERT A. WEBB ASSOCIATES
 CIVIL ENGINEERS - RIVERSIDE, CALIFORNIA
 APPROVED Albert A. Webb DATE 10-29-60
CITY OF RIVERSIDE, CALIFORNIA
 DEPARTMENT OF PUBLIC WORKS
SEWER PLAN AND PROFILE
CREST VIEW CT. & EASEMENT
TRACT NO. 2121
 APPROVED BY [Signature]
 DIRECTOR OF PUBLIC WORKS
 DATE 11-14-60
NO S-259
SHEET 5 OF 5

* 18" RIBBED SEWERS 2 1/8" DIA. PER