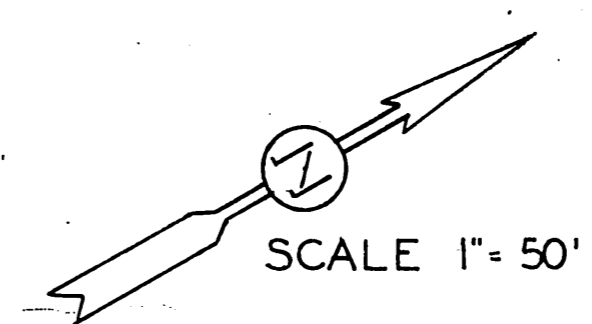
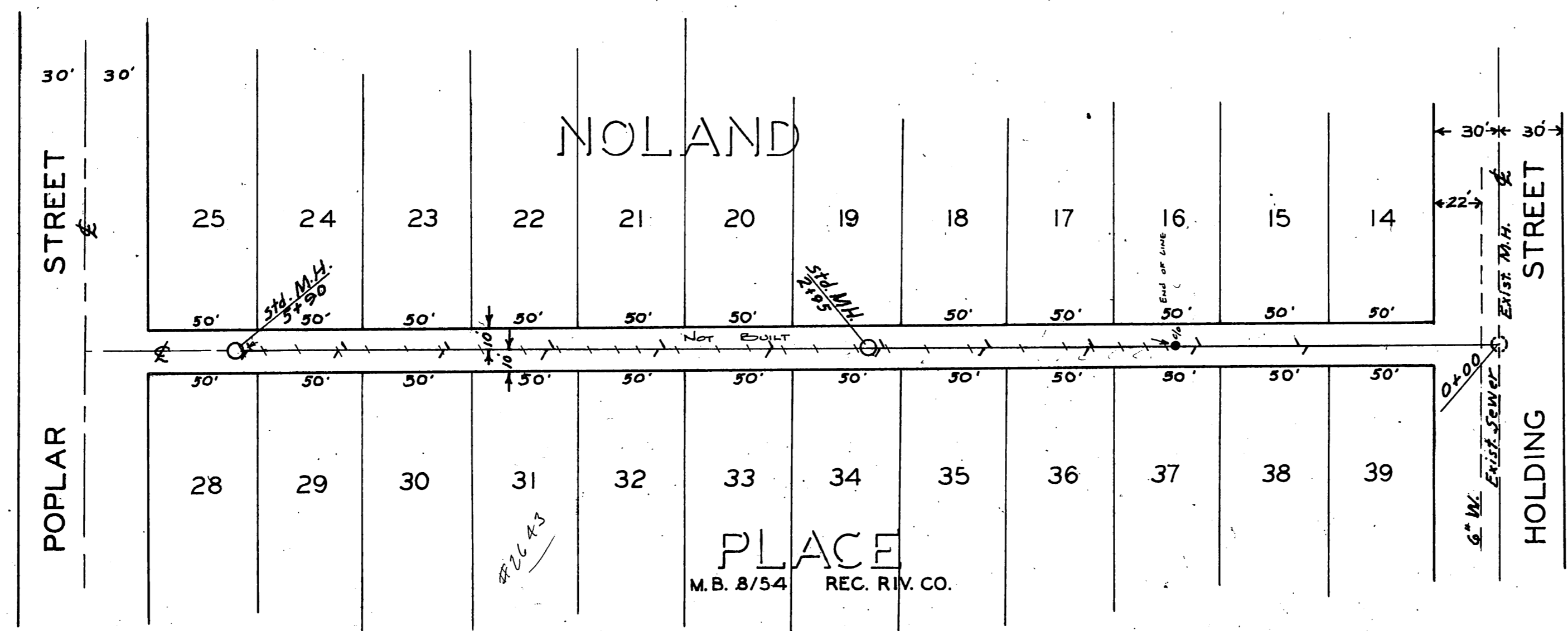


SCALES Hor. lin. 50 ft  
 Vert. lin. 5 ft

B.M. Xinnim Mill at  
 intersection line  
 and holding st.  
 Elev- 854.00

FB-586-16



SCALE 1" = 50'

REVISIONS		CITY OF RIVERSIDE CALIFORNIA DEPARTMENT OF PUBLIC WORKS	
MARK	DATE	DESCRIPTION	
			PROPOSED SANITARY SEWER IN ALLEY SOUTH FROM HOLDING ST WEST OF MULBERRY ST.
DESIGNED BY	ZSW	CHECKED BY	F.F.H.
DRAWN BY	LSW	APPROVED BY	<i>[Signature]</i>
RECOMMENDED BY		ASSISTANT CITY ENGINEER	DIRECTOR OF PUBLIC WORKS
		DATE	NOV 25 1950
			5-26
			SHEET 1 OF 1

PROFILE		BY	DATE
NO.	REVISIONS		

PLAN		BY	DATE
NO.	REVISIONS		