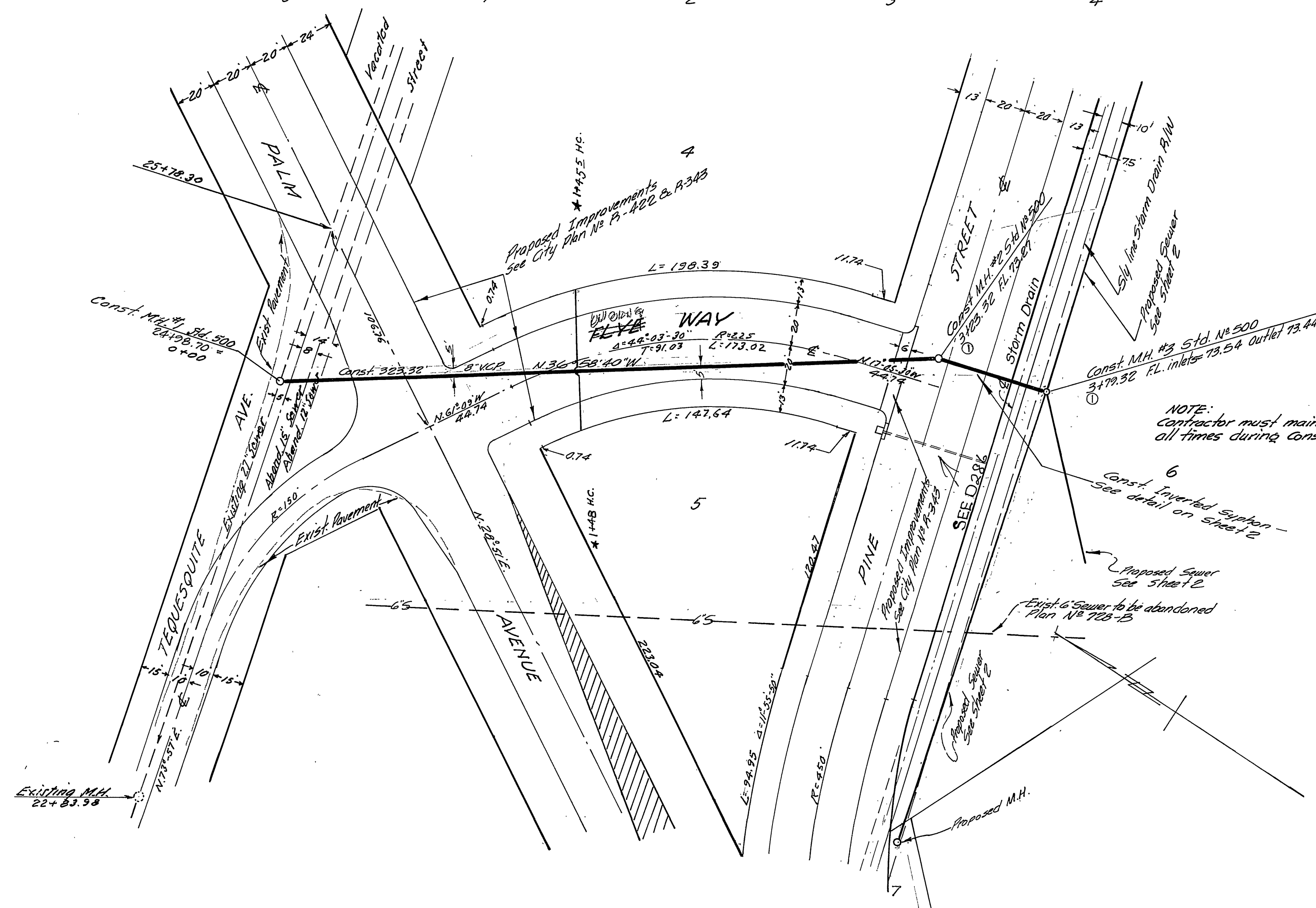


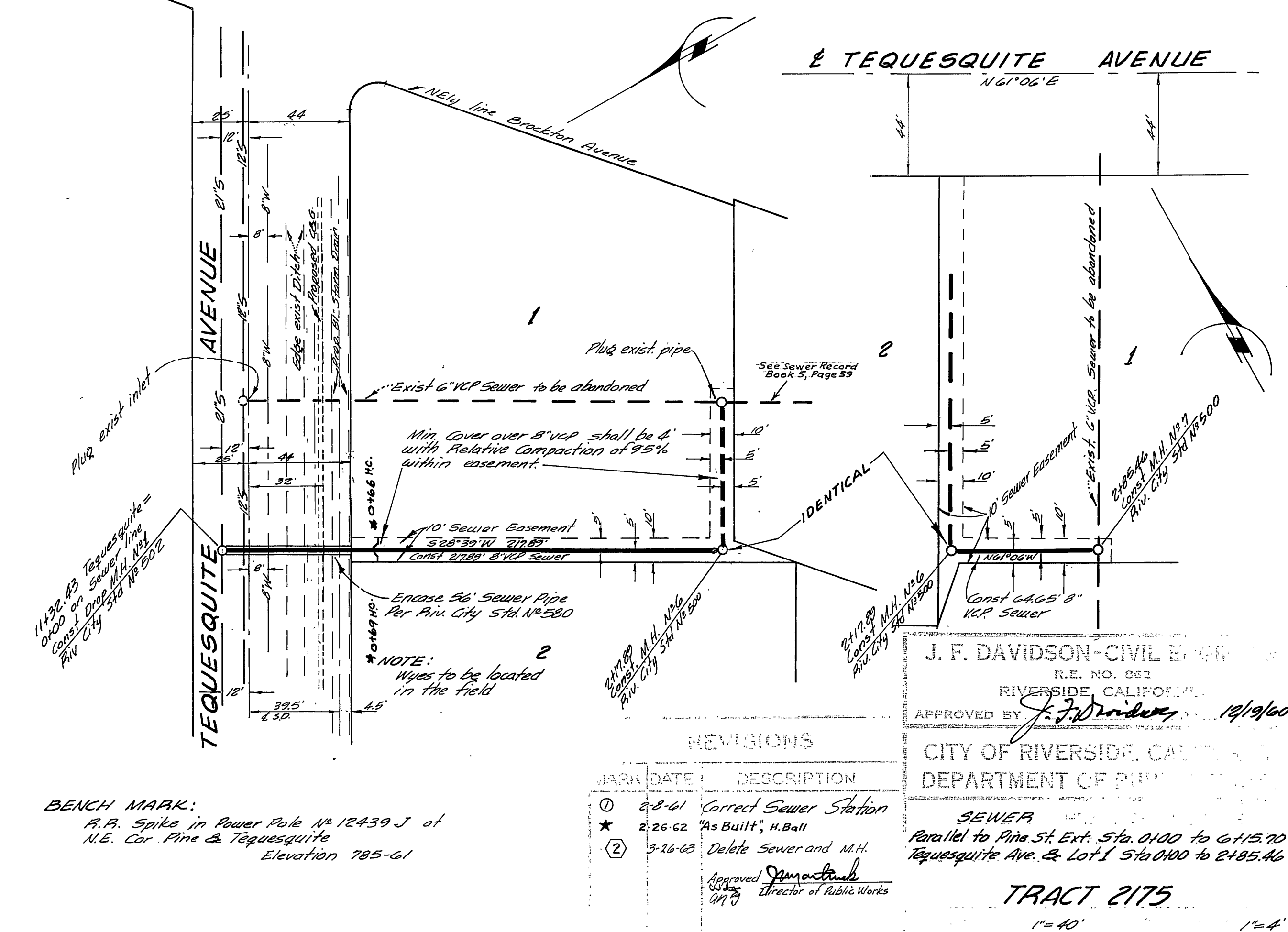
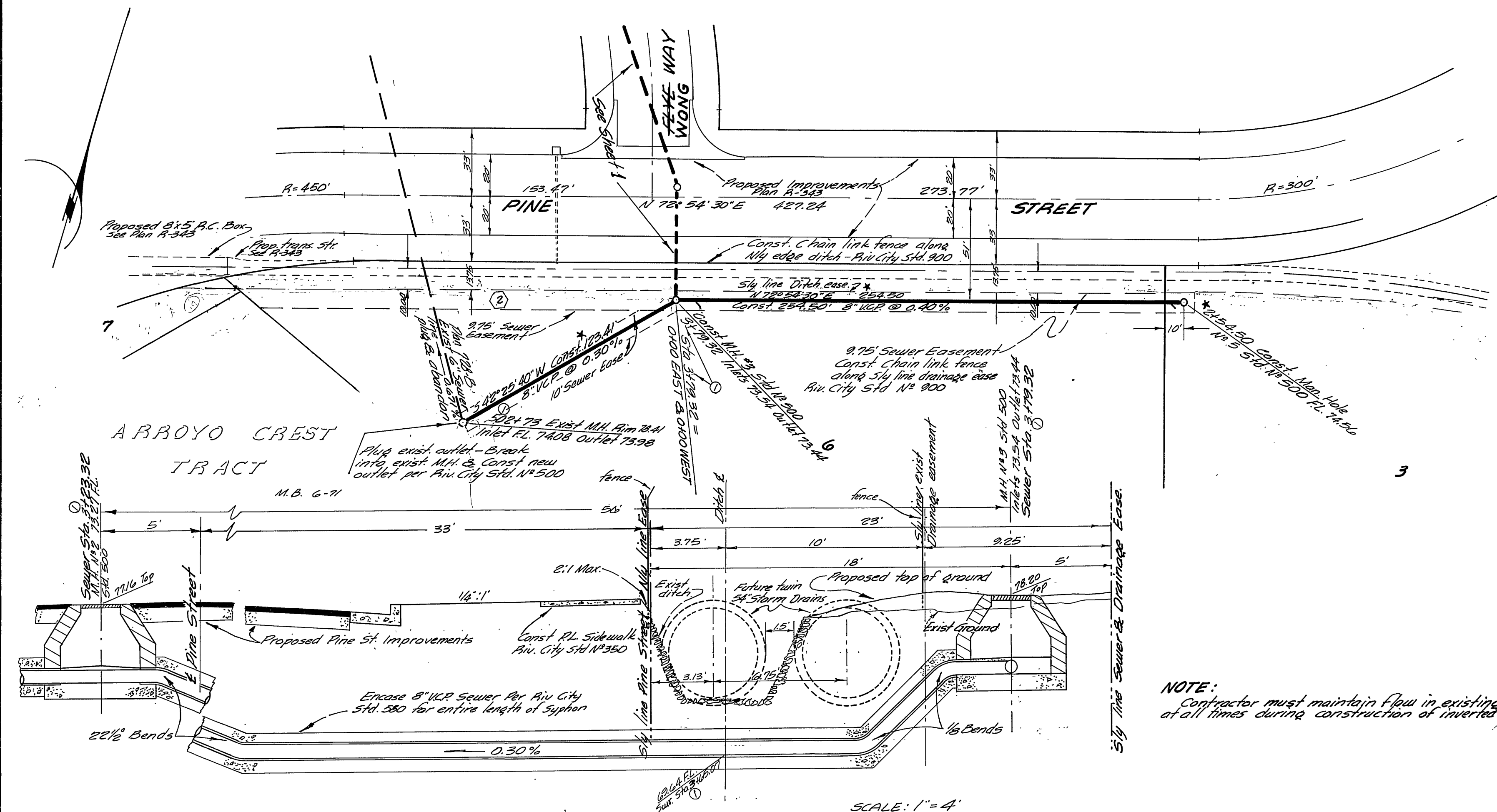
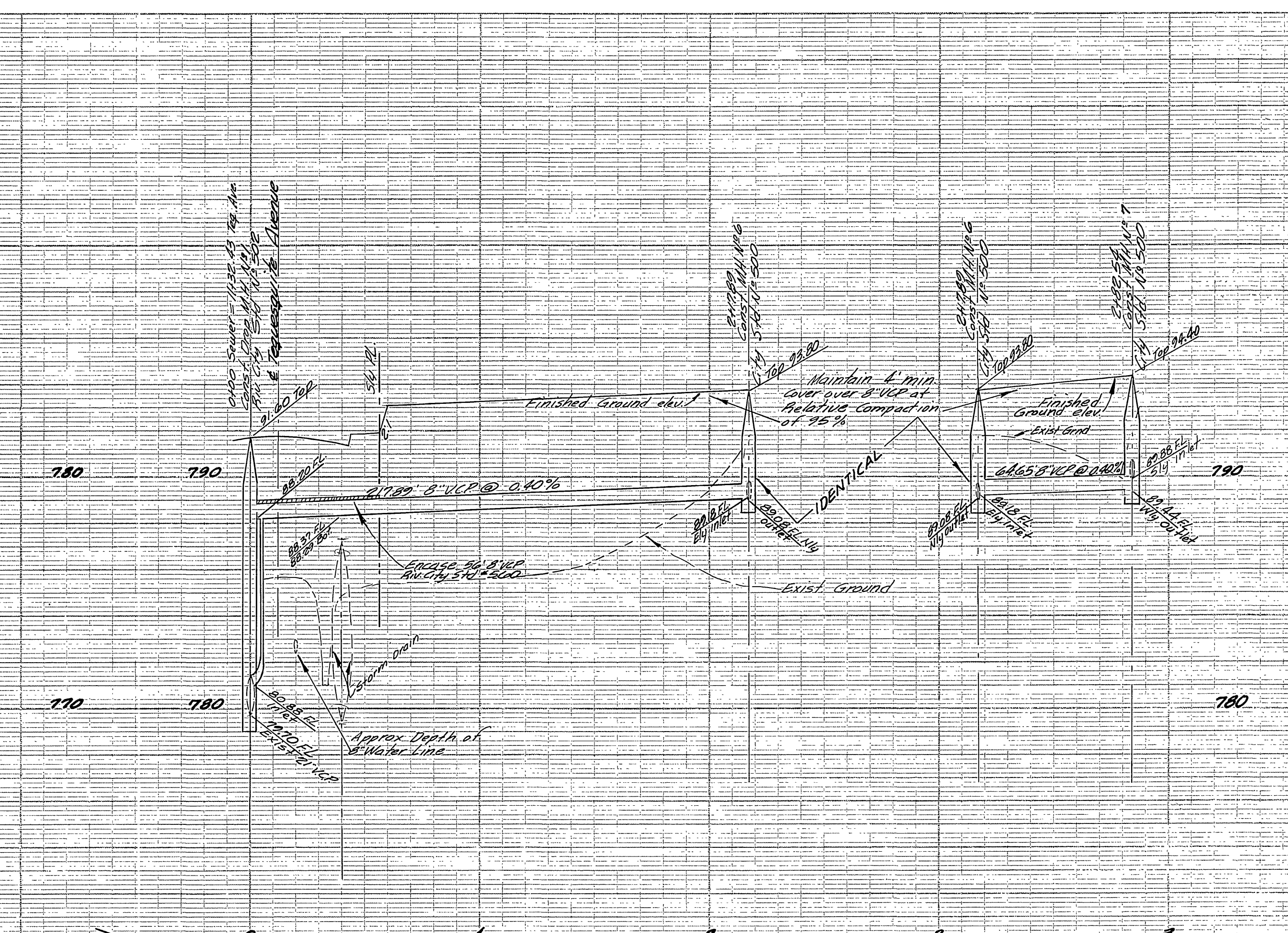
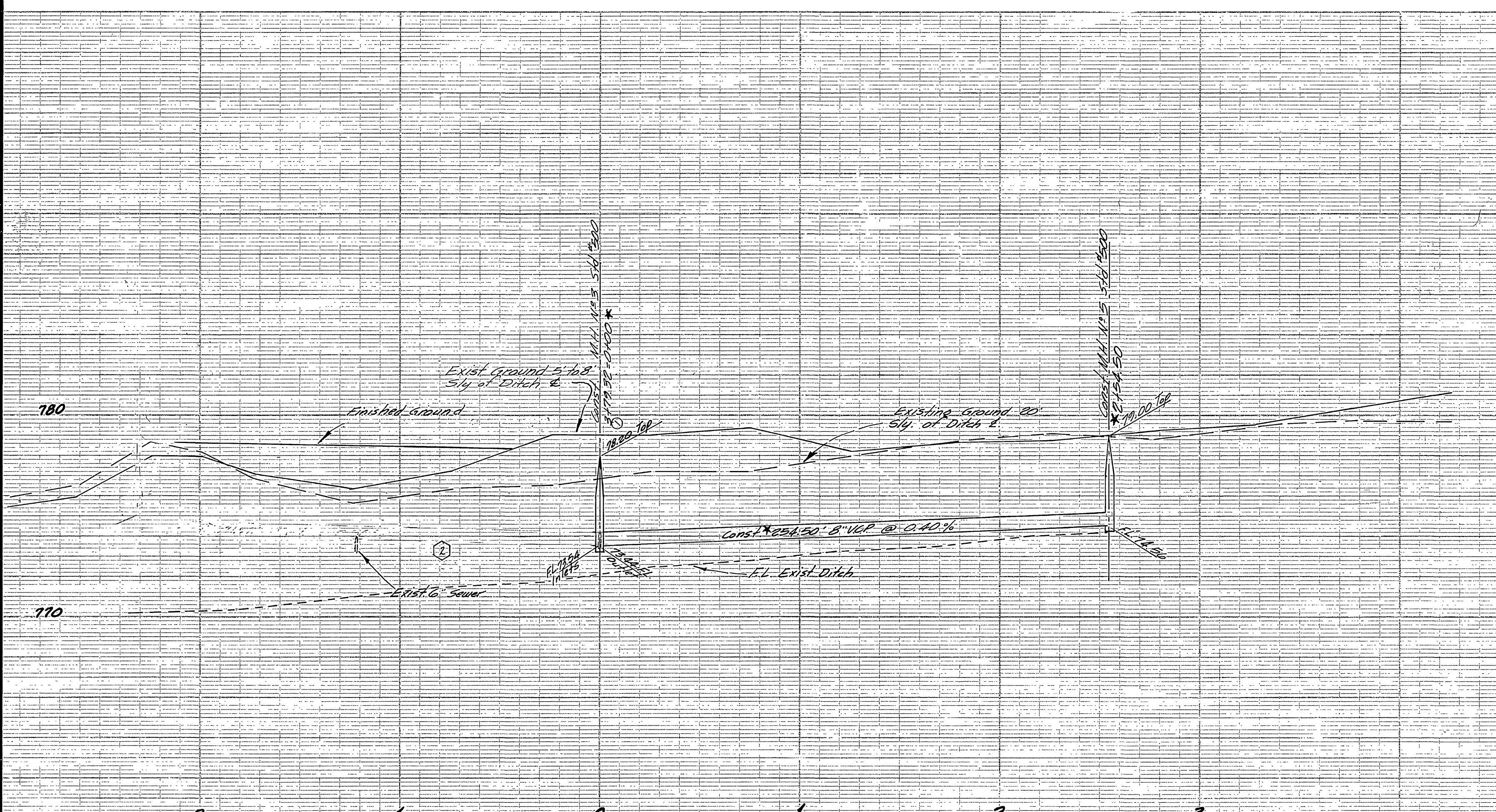
City B.M. - R.R. Spike in Power Pole
 No. 12439 J at N.E. Cor.
 Pine St & Tequesquite Ave
 Elev. = 785.61

ESTIMATE OF QUANTITIES				
MANHOLES	DRAP MANHOLES	8" KCP	4" KCP	6" x 4" WYES
7	1	1270'	78'	7

NOTES:
 All wyes and laterals to be located in the field.
 All manholes to be Riv. City Std. No. 500 or No. 502
 All laterals to be 4" and extend to the property line.
 All construction shall be in accordance with Standards and Specifications No. 460 of the City of Riverside, Department of Public Works.
 It shall be the responsibility of the contractor to clear the right of way in accordance with the provisions of the law as it affects each utility including irrigation lines and appurtenances and at no extra cost to the City.
 Maximum vertical spacing of steps in all manholes shall be 12".



INDEXED M.D.
J. F. DAVIDSON - CIVIL ENGINEER
 R.F. NO. 862
 RIVERSIDE, CALIFORNIA
 APPROVED BY *J.F. Davidson* DATE *12/16/60*
CITY OF RIVERSIDE, CALIFORNIA
DEPARTMENT OF PUBLIC WORKS
 DESIGNED BY *W.D. WONG*
SEWER PLAN & PROFILE
TEQUESQUITE AVE. & FLYWAY to
PINE ST. Sta. 0+00 to 2+79.32
TRACT 2175
 HORIZ. SCALE 1"=40'
 DESIGNED BY *J. F. Davidson* CHECKED BY *W.D. WONG*
 DRAWN BY *W.D. WONG* DATE *2-6-61*
 5-262
 1 2



DETAIL OF INVERTED SEWER SYPHON AT PINE STREET STATION 6+78.12 and TYPICAL SECTION OF EXISTING STORM DRAIN AND SEWER PARALLEL TO PINE STREET

NOTE: Contractor must maintain flow in existing ditch at all times during construction of inverted siphon

BENCH MARK: R.R. Spike in Power Pole N° 12439 J at N.E. Cor. Pine & Tequesquite Elevation 785.61

MARK	DATE	DESCRIPTION
①	2-8-61	Correct Sewer Station
★	2-26-62	"As Built", H.Ball
②	3-16-63	Delete Sewer and M.H.

J. F. DAVIDSON-CIVIL ENGINEER
R.E. NO. 082
RIVERSIDE, CALIFORNIA
APPROVED BY: [Signature] 12/19/60
CITY OF RIVERSIDE, CALIFORNIA
DEPARTMENT OF PUBLIC WORKS
SEWER
Parallel to Pine St. Ext. Sta. 0+00 to 6+18.70
Tequesquite Ave. & Lot I Sta. 0+00 to 2+85.46

TRACT 2175

5-262