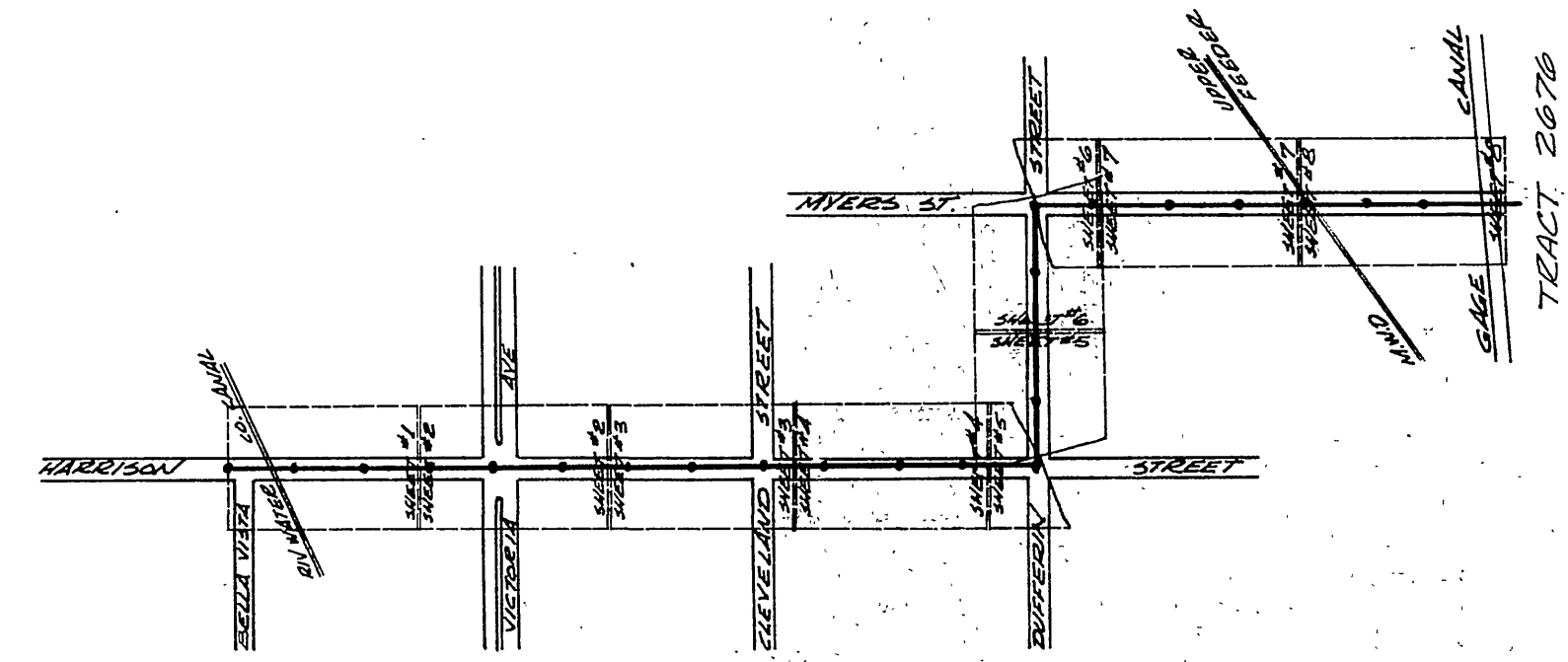


NOTE: Boring for sewer casing is to be made from the upstream side prior to trenching. Boring is to start at station 2+15 and run back to station 2+15.

- NOTES:
- All construction shall be in accordance with Standards and Specifications No. 161 of the City of Riverside, Dept. of Public Works.
 - Exact location of any house connections to be determined in the field at time of construction.
 - Bench mark - 200 Spike in Power Pole # 13006 J of Center of Dufferin Ave & Myers St. Elev 923.23
 - Pipe shall be bedded per Case II, Std. Draw # 452 unless otherwise noted on plan.

SEE CITY OF RIVERSIDE PLAN S-167 SHEET 3 OF 5 FOR EXISTING 12\"/>

- UTILITY NOTES:
- 24 hours prior to any excavation, please contact the following utility companies:
- Riverside Telephone 714-984-0071
 - Riverside City Water 714-686-7675, Ext. 361
 - Southern California Gas 714-683-6620
 - Riverside Water Co. 714-686-7675, Ext. 385
 - Metropolitan Water Dist. See Sheet 7
 - Four Corners Pipe Line Co. 213-635-0301



Joints in V.C.P. sewers shall conform to A.S.T.M. Std. C-425-60T, or the latest revision thereof.

The existence and location of any underground utility pipes & structures shown are from available records. The contractor is required to take precautionary measures to protect the utility lines shown and any other utility lines not shown on this plan.

It shall be the responsibility of the contractor to clear the right of way in accordance with the provisions of the law as it affects each utility including irrigation lines and easements and at no cost to the City.

Approved *Howard R. Creason*
 Director of Public Works
 Date 11-19-60

REVISIONS		
MARK	DATE	DESCRIPTION

J. F. DAVIDSON-CIVIL ENGINEER
 R.E. NO. 862
 RIVERSIDE, CALIFORNIA

APPROVED BY: *J. F. Davidson* DATE: 11/19/60

CITY OF RIVERSIDE, CALIFORNIA
 DEPARTMENT OF PUBLIC WORKS

SEWER PLAN & PROFILE
HARRISON STREET
TRUNK SEWER #2
 TO SERVE
TRACT 2676

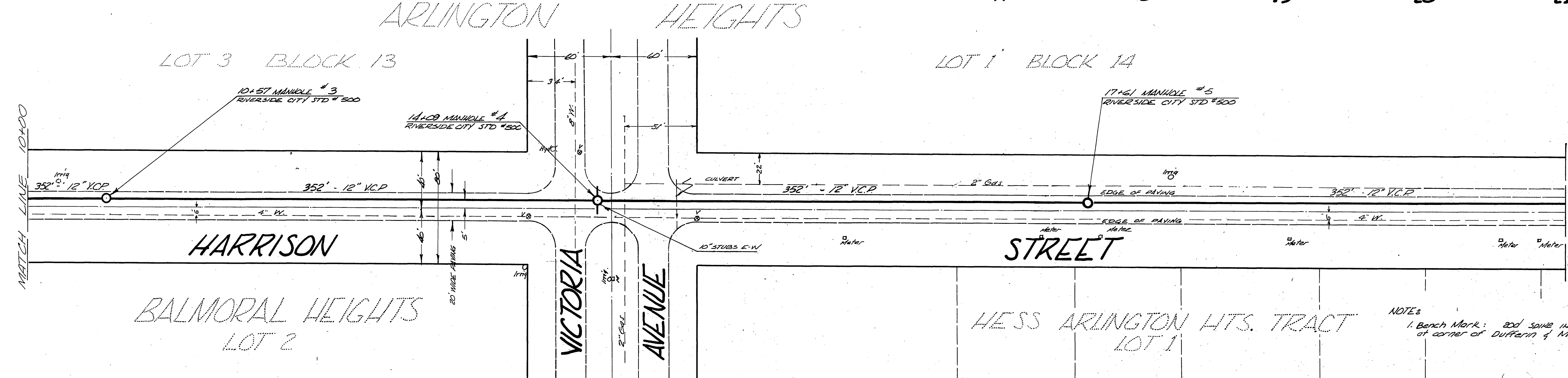
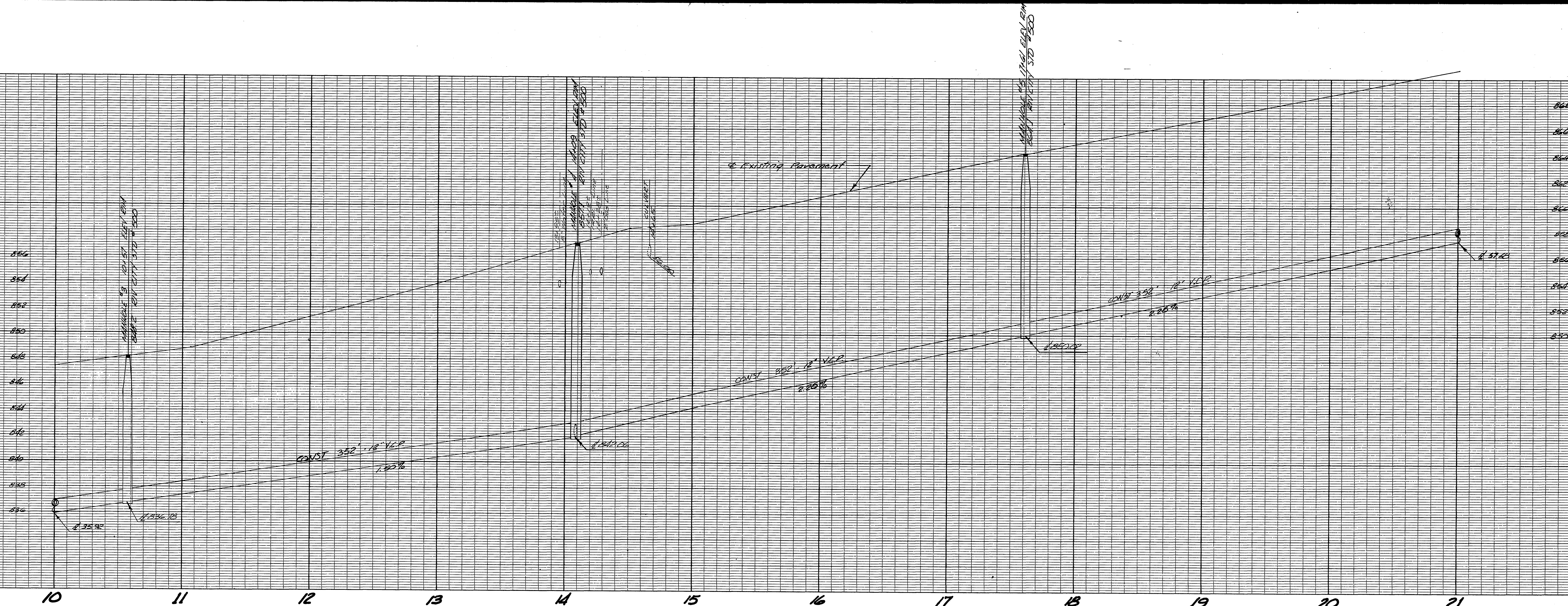
HORIZ. SCALE 1"=40' VERT. SCALE 1"=4'

APPROVED BY: *NOT BUILT*
 Director of Public Works

DATE:

FILE NO. **S-205**

SHEET **1** OF **8**

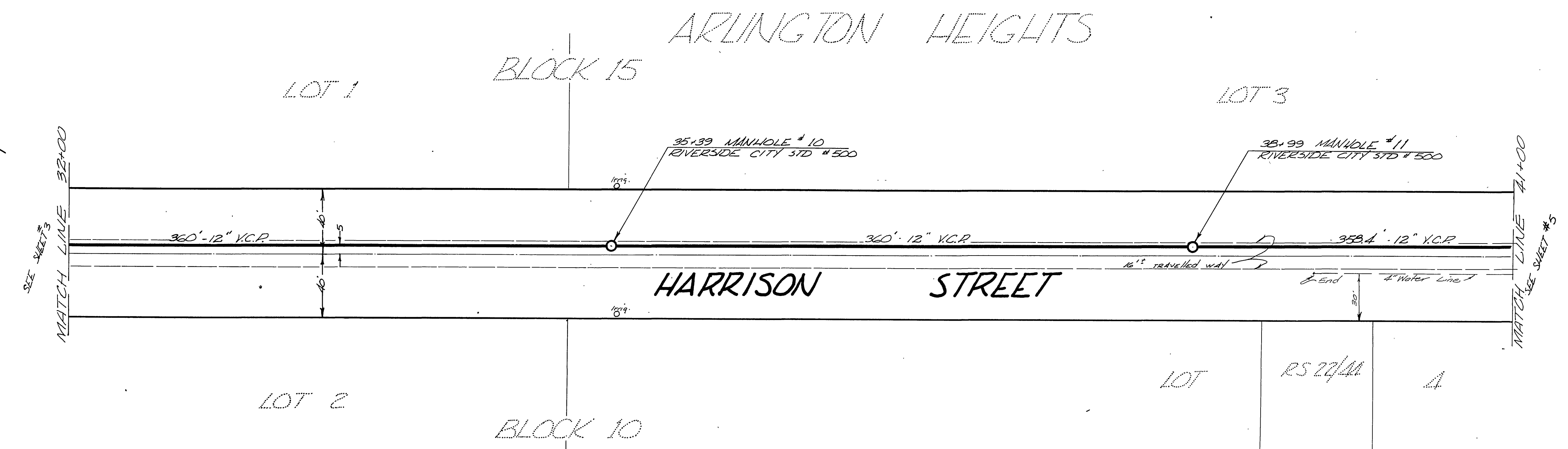
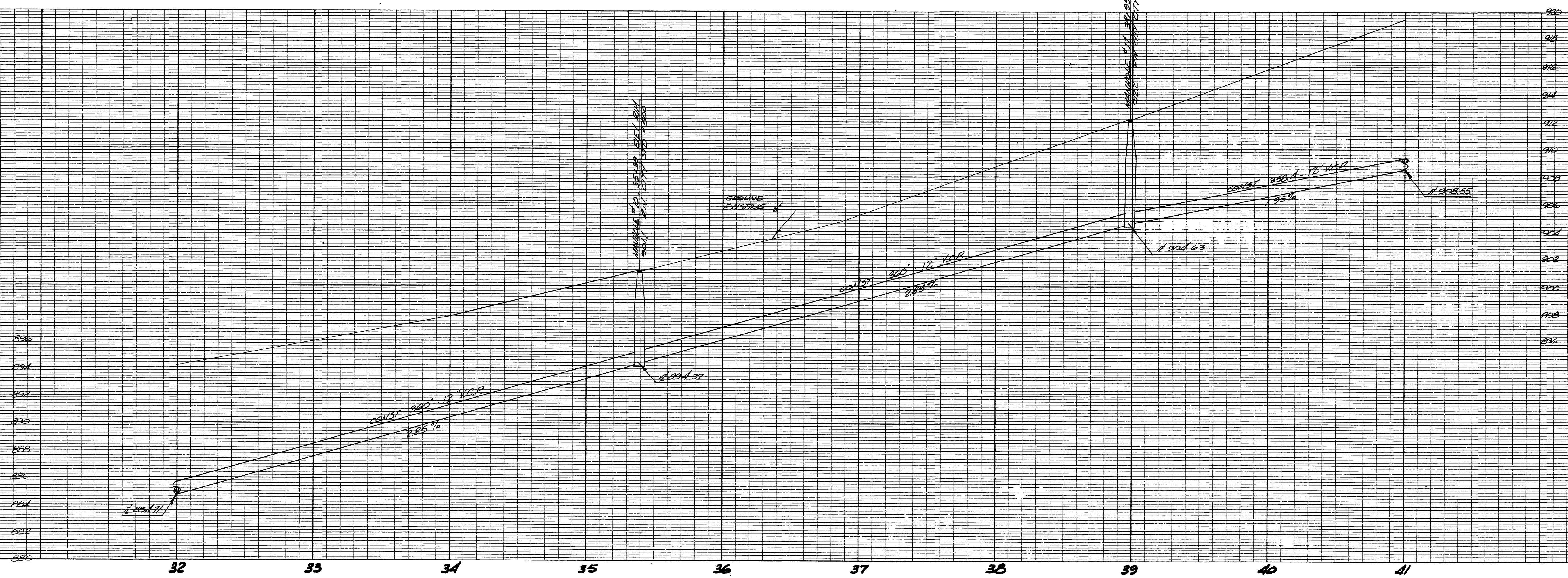


NOTE:
1. Bench Mark: 200 spike in Power Pole #19006 J at corner of Dufferin & Myers St Elev 924.23

J. F. DAVIDSON-CIVIL ENGINEER
R.E. NO. 862
RIVERSIDE, CALIFORNIA
APPROVED BY *J. F. Davidson* DATE 10/2/60

REVISIONS		
MARK	DATE	DESCRIPTION

CITY OF RIVERSIDE, CALIFORNIA
DEPARTMENT OF PUBLIC WORKS
SEWER PLAN & PROFILE
HARRISON STREET
TRUNK SEWER #2
TO SERVE
TRACT 2676
HORIZ. SCALE 1"=40' VERT. SCALE 1"=4'
DESIGNED BY _____ CHECKED BY _____ APPROVED BY _____
DRAWN BY _____ DIRECTOR OF PUBLIC WORKS
RECOMMENDED BY _____ ASSISTANT CITY ENGINEER DATE _____
NO. 9-265
SHEET 2 OF 8



NOTES:
 1. Bench Mark - 200' spike in Power Pole
 13006-J at corner of Dufferin & Myers
 Sls. Elev. - 921.23

J. F. DAVIDSON-CIVIL ENGINEER
 R.E. NO. 862
 RIVERSIDE, CALIFORNIA
 APPROVED BY *J. Davidson* DATE 11/6/60

CITY OF RIVERSIDE, CALIFORNIA
 DEPARTMENT OF PUBLIC WORKS

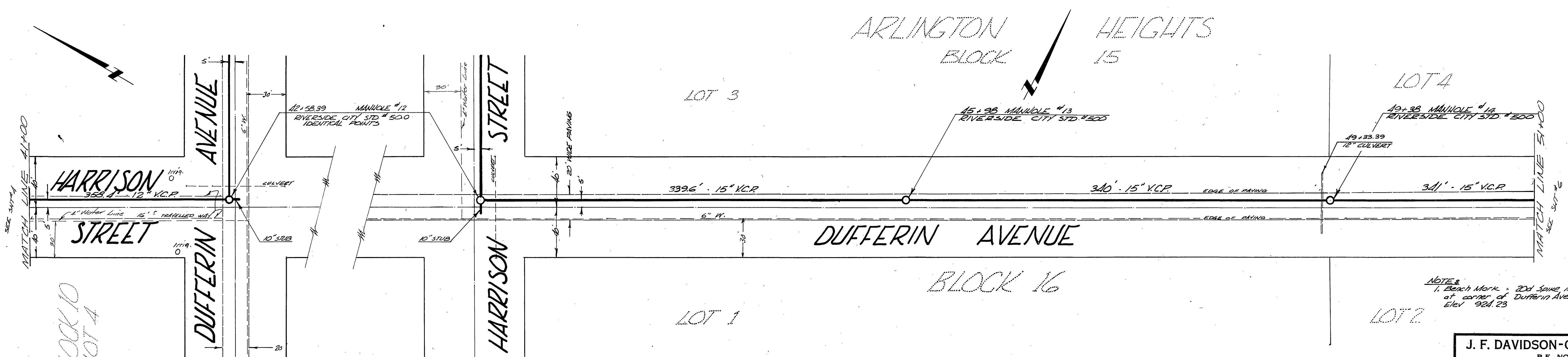
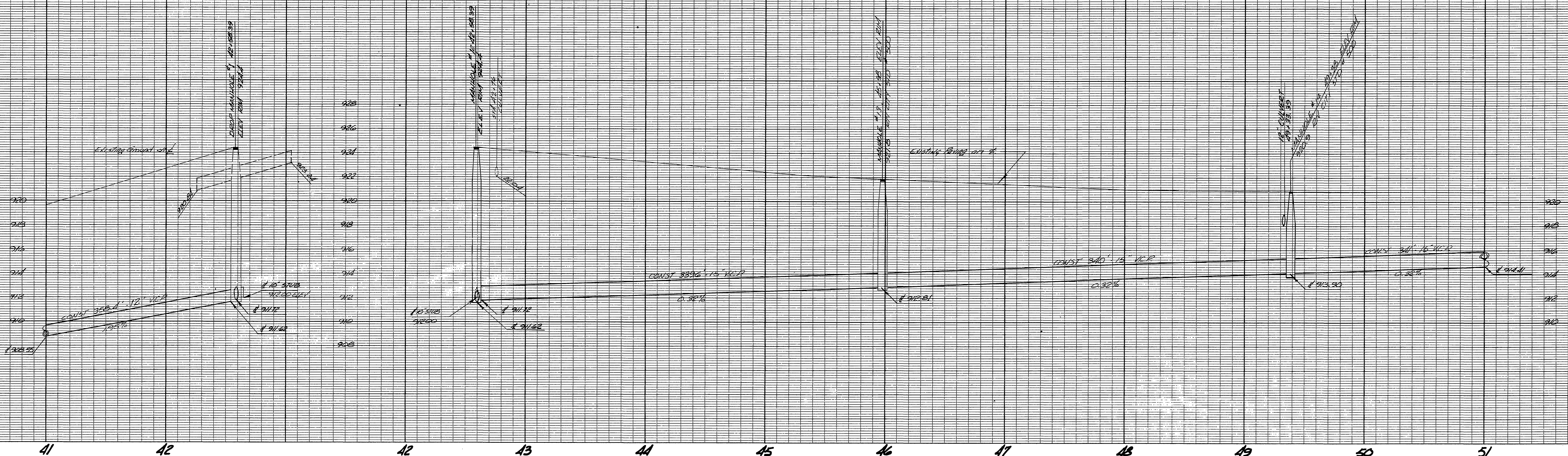
REVISIONS		
MARK	DATE	DESCRIPTION

SEWER PLAN & PROFILE
 HARRISON STREET
 TRUNK SEWER #2
 TO SEWER
 TRACT 2676
 HORIZ. SCALE 1"=40' VERT. SCALE 1"=4'

DESIGNED BY
 DRAWN BY
 RECOMMENDED BY
 ASSISTANT CITY ENGINEER

CHECKED BY
 APPROVED BY
 Director of Public Works
 DATE

NO. 5-265
 SHEET 4 OF 8



NOTE:
1. Bench Mark - 2d1 Same in River Park #13006J at corner of Dufferin Ave. & Myers St elev 92d.23

J. F. DAVIDSON-CIVIL ENGINEER
R.E. NO. 862
RIVERSIDE, CALIFORNIA
APPROVED BY *J. Davidson* DATE 04/16

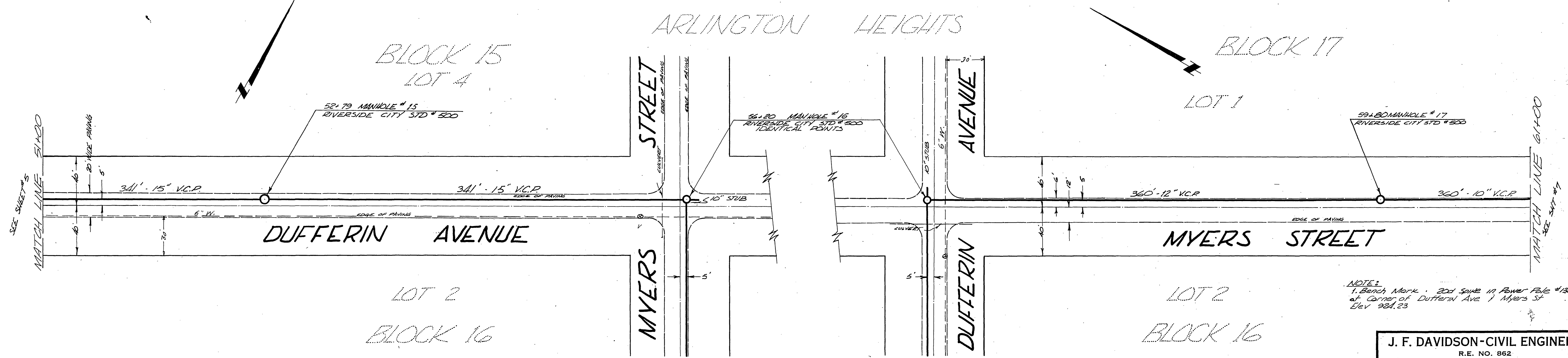
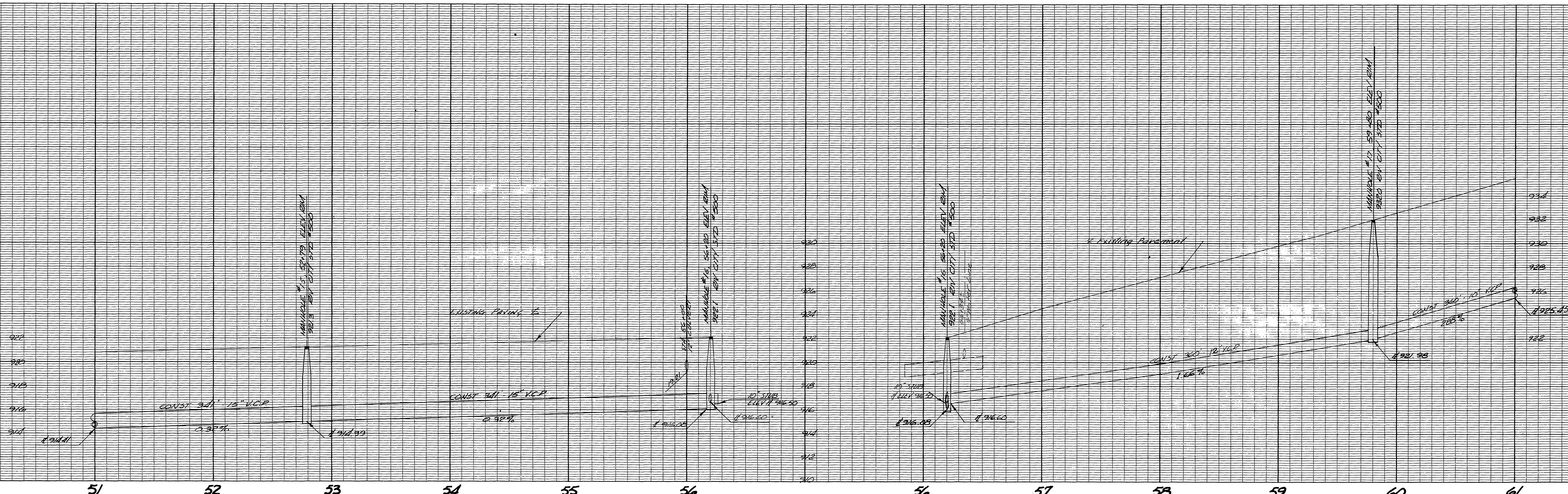
CITY OF RIVERSIDE, CALIFORNIA
DEPARTMENT OF PUBLIC WORKS

SEWER PLAN & PROFILE
HARRISON STREET
TRUNK SEWER #2
TO SEWER
TRACT 2676
HORIZ. SCALE 1" = 40' VERT. SCALE 1" = 4'

REVISIONS		
MARK	DATE	DESCRIPTION

DESIGNED BY
DRAWN BY
RECOMMENDED BY
ASSISTANT CITY ENGINEER

APPROVED BY
Director of Public Works
DATE
NO. 5-205
SHEET 5 OF 8



NOTES:
 1. Bench Mark - 201' Same in Power File #12006-1
 at Corner of Dufferin Ave & Myers St
 Elev 924.23

J. F. DAVIDSON-CIVIL ENGINEER
 R.E. NO. 862
 RIVERSIDE, CALIFORNIA
 APPROVED BY *J. Davidson* DATE 10/14/60

CITY OF RIVERSIDE, CALIFORNIA
 DEPARTMENT OF PUBLIC WORKS

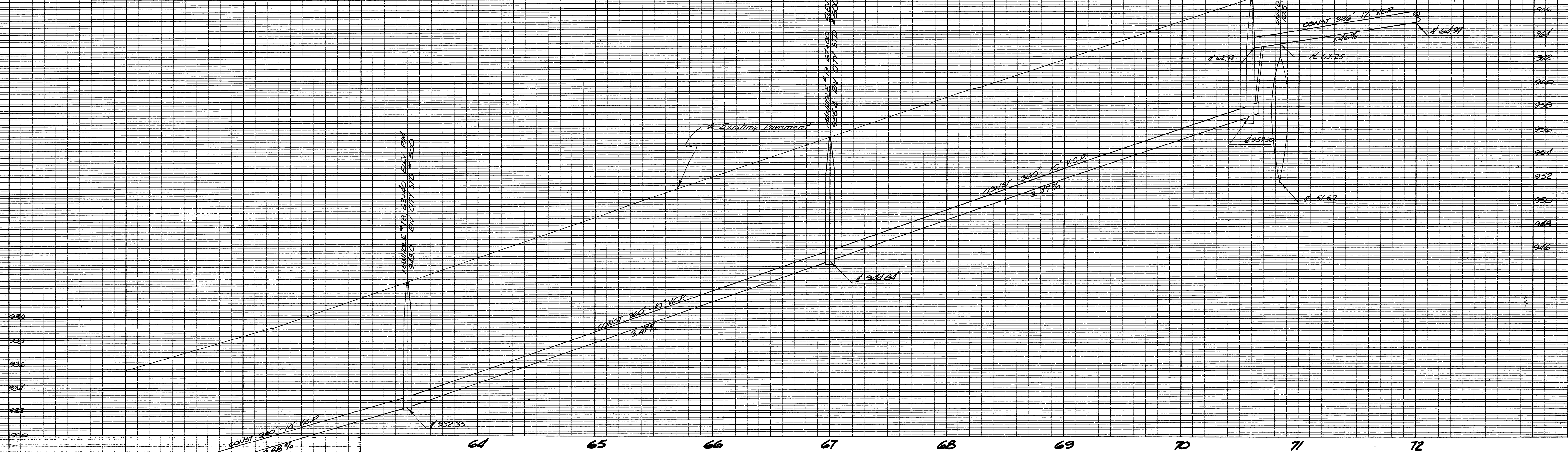
SEWER PLAN & PROFILE
 HARRISON STREET
 TRUNK SEWER #2
 TO SEWER
 TRACT 2676
 HORIZ. SCALE 1"=40' VERT. SCALE 1"=4'

REVISIONS		
MARK	DATE	DESCRIPTION

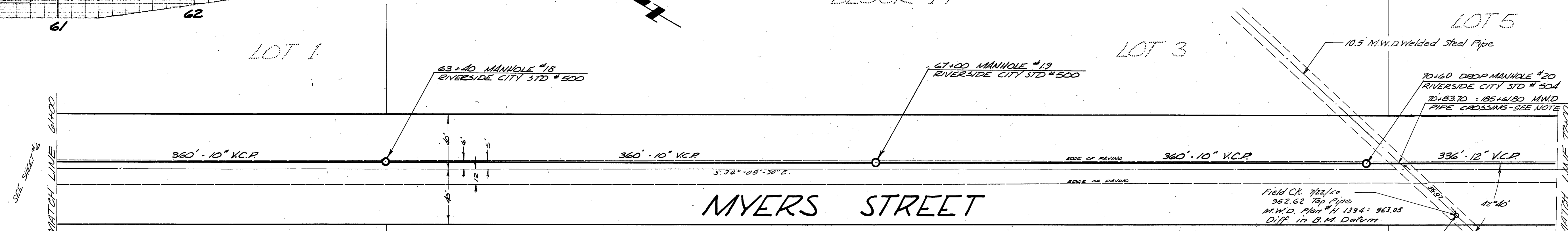
DESIGNED BY
 DRAWN BY
 RECOMMENDED BY
 ASSISTANT CITY ENGINEER

CHECKED BY
 APPROVED BY
 Director of Public Works
 DATE

NO. 5-265
 SHEET 6 OF 8



ARLINGTON HEIGHTS
BLOCK 17



MYERS STREET

BLOCK 16

NOTE
The contractor will use adequate precautions to properly safeguard this M.W.D. Pipe from any damage during trenching operations. Give at least 48 hours advance notice of operations at this point by calling Mr. R.J. Kirkby at Madison 4-9261, Extension 77.

J. F. DAVIDSON-CIVIL ENGINEER
R.E. NO. 862
RIVERSIDE, CALIFORNIA
APPROVED BY *J.F. Davidson* DATE 10/1/60

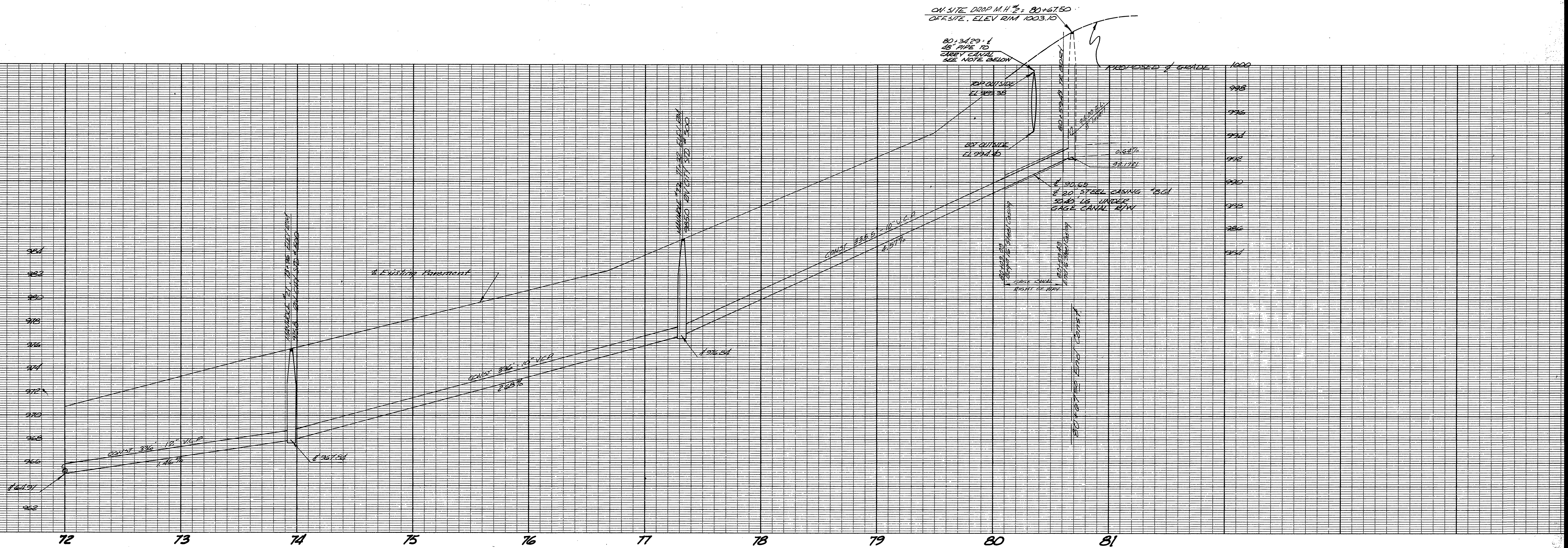
REVISIONS		
MARK	DATE	DESCRIPTION

CITY OF RIVERSIDE, CALIFORNIA
DEPARTMENT OF PUBLIC WORKS

SEWER PLAN & PROFILE
HARRISON STREET
TRUNK SEWER #2
TO SEWER
TRACT 2676
HORIZ. SCALE 1"=40' VERT. SCALE 1"=4'

DESIGNED BY	CHECKED BY	APPROVED BY
DRAWN BY		Director of Public Works
RECOMMENDED BY	ASSISTANT CITY ENGINEER	DATE

NO. 5-265
SHEET 7 OF 8



ARLINGTON HEIGHTS
BLOCK 17
LOT 5

73+96 MANHOLE #21
RIVERSIDE CITY STD #300

77+32 MANHOLE #22
RIVERSIDE CITY STD #300

SEE SHEET #
MATCH LINE 72+00

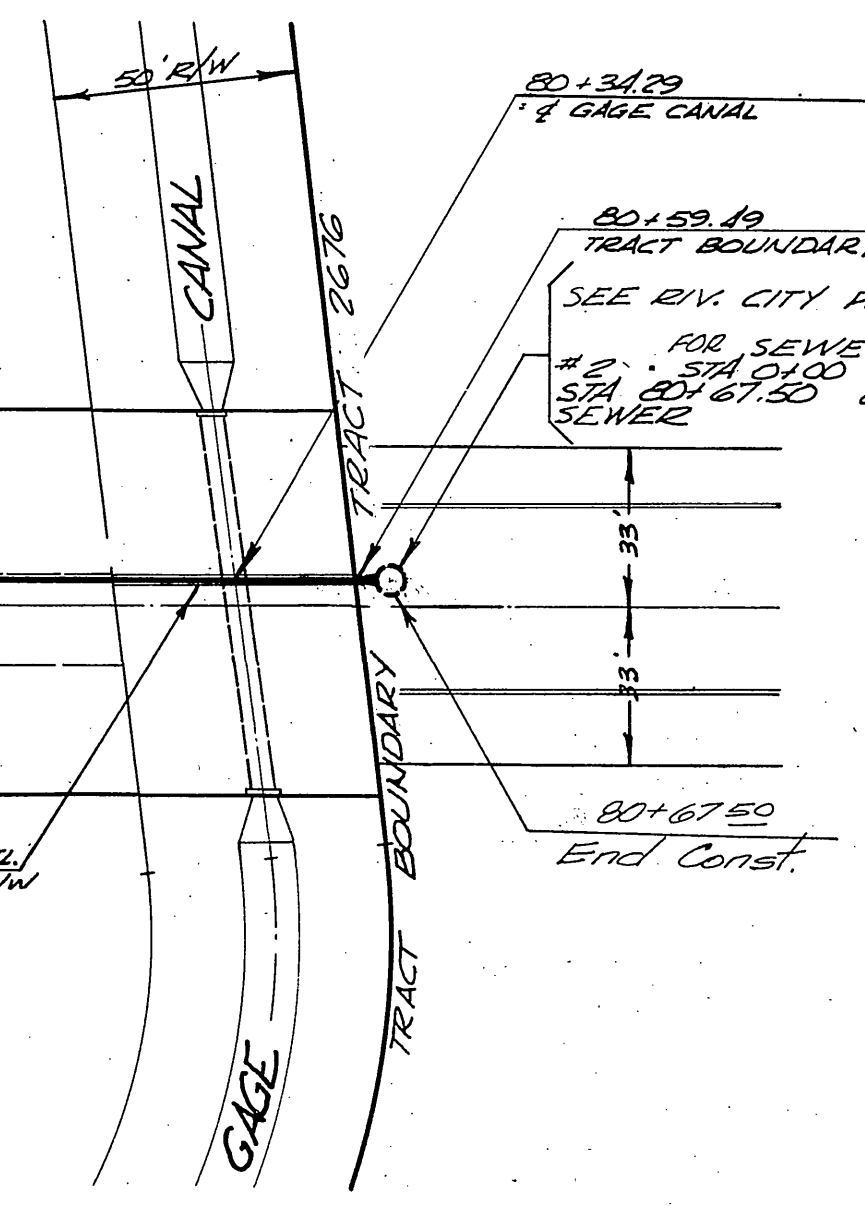
336'-12" V.C.P.

336'-10" V.C.P.

335.5'-10" V.C.P.
EDGE OF PAVING

MYERS STREET

BLOCK 16
LOT 6



TRACT # 2676

NOTE:
FOR DETAILS OF CANAL RECONSTRUCTION SEE RIVERSIDE CITY PLAN # R-427

FOR SEWER LINES IN TRACT SEE RIVERSIDE CITY PLAN # S-264

CONSTRUCTION NOTES

1. CONSTRUCTION OF SEWER UNDER GAGE CANAL CO'S R/W IS COVERED BY LICENSE # 1030+16.1
2. NO OPEN EXCAVATION TO BE MADE WITHIN GAGE CANAL R/W.
3. THE BORING & JACKING OF THE CONDUIT TUBE TO BE DONE FROM THE SOUTHWEST SIDE OF R/W.
4. IN THE EVENT WATER FROM THE CANAL COMES INTO THE CONDUIT TUBE OR EXCAVATION DURING THE BORE AND OPERATION, AT THE OPTION OF THE GAGE CANAL CO ENGINEER, THE BORING WILL BE TERMINATED, THE BORE PIT FILLED, AND ALL THE WORK IN OR UNDER THE CANAL CO'S R/W CEASE UNTIL THE WATER IS OUT OF THE CANAL AT THE END OF THE IRRIGATION SEASON.

NOTE:
Bench Mark: 20d Spike in Power Pole 13006 at the corner of Dufferin Ave & Myers St Elev. 924.23

Approved _____
Chief Engineer, Gage Canal Co
Date _____

REVISIONS		
MARK	DATE	DESCRIPTION

J. F. DAVIDSON-CIVIL ENGINEER
R.E. NO. 862
RIVERSIDE, CALIFORNIA
APPROVED BY *J. Davidson* DATE 10/16/60

CITY OF RIVERSIDE, CALIFORNIA
DEPARTMENT OF PUBLIC WORKS

SEWER PLAN & PROFILE
HARRISON STREET
TRUNK SEWER #2
TO SEWER
TRACT 2676

HORIZ. SCALE 1"=40' VERT. SCALE 1"=4'

DESIGNED BY	CHECKED BY	APPROVED BY
DRAWN BY	RECOMMENDED BY	Director of Public Works
	ASSISTANT CITY ENGINEER	DATE

NO. 5-265
SHEET 8 OF 8