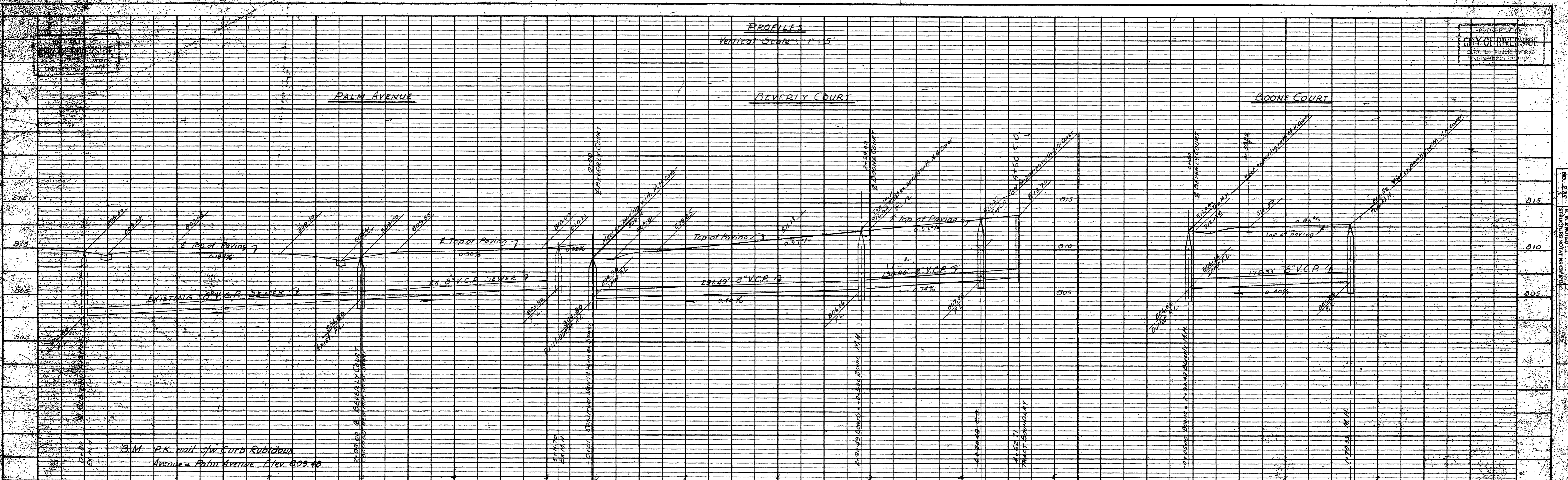
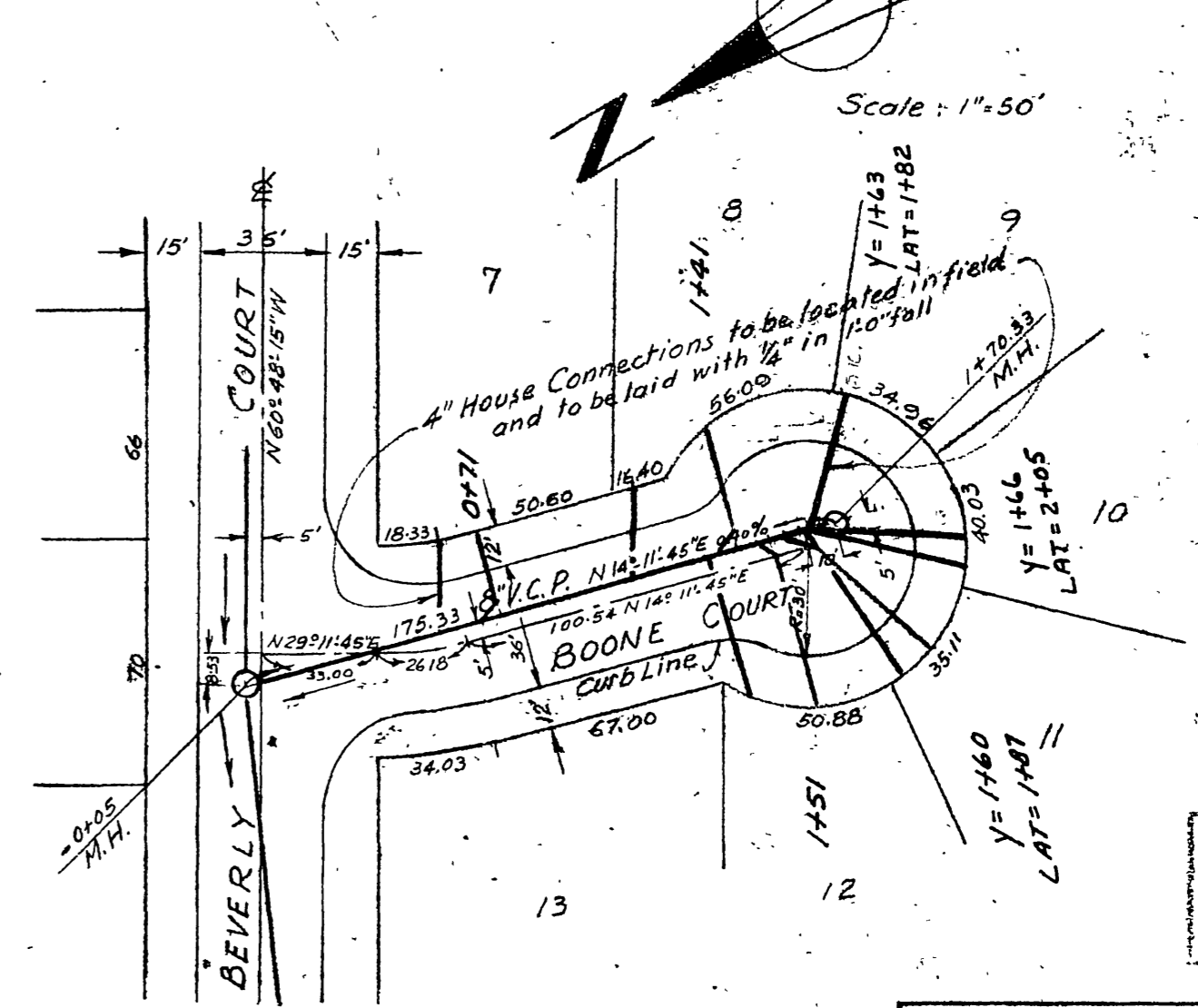
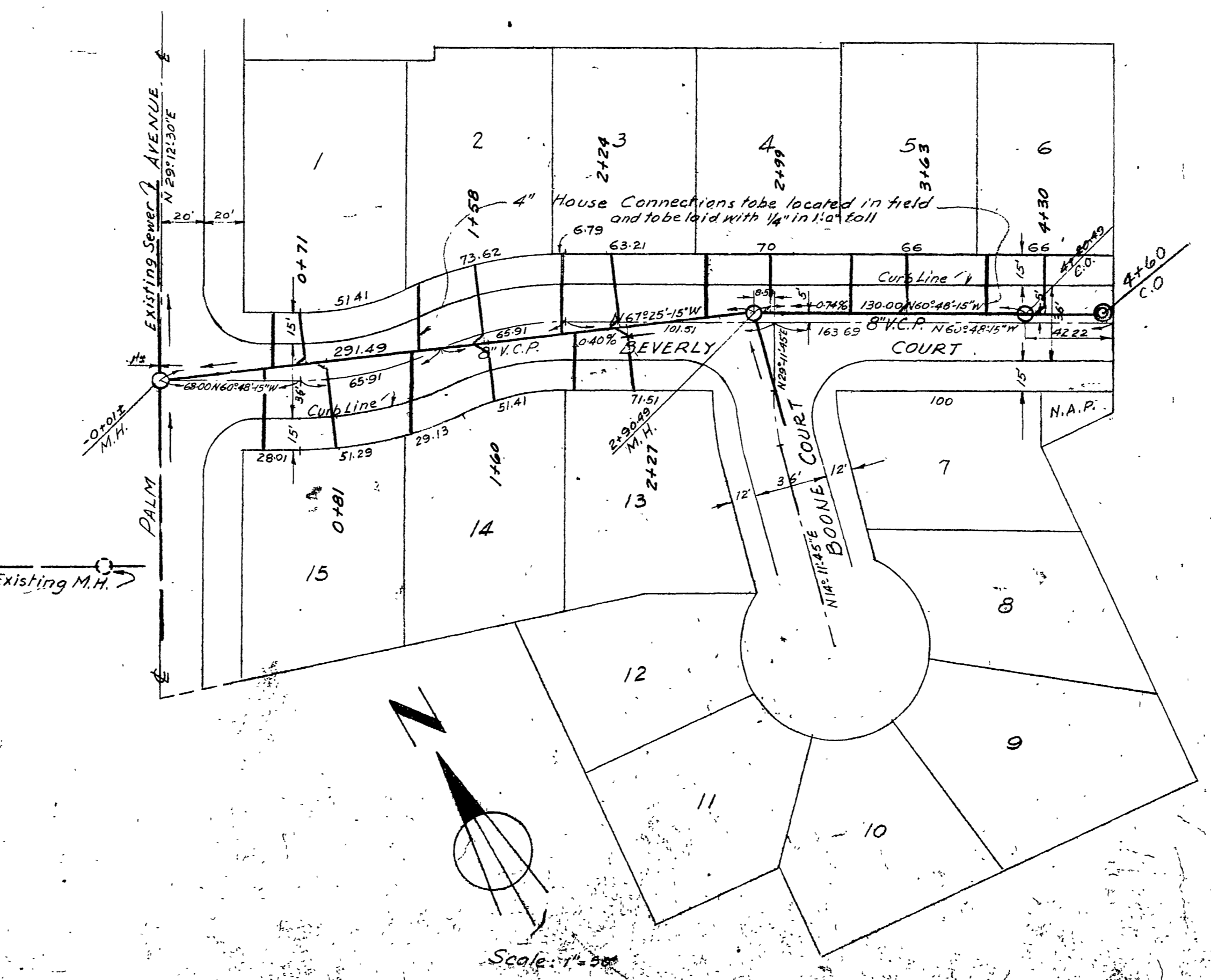
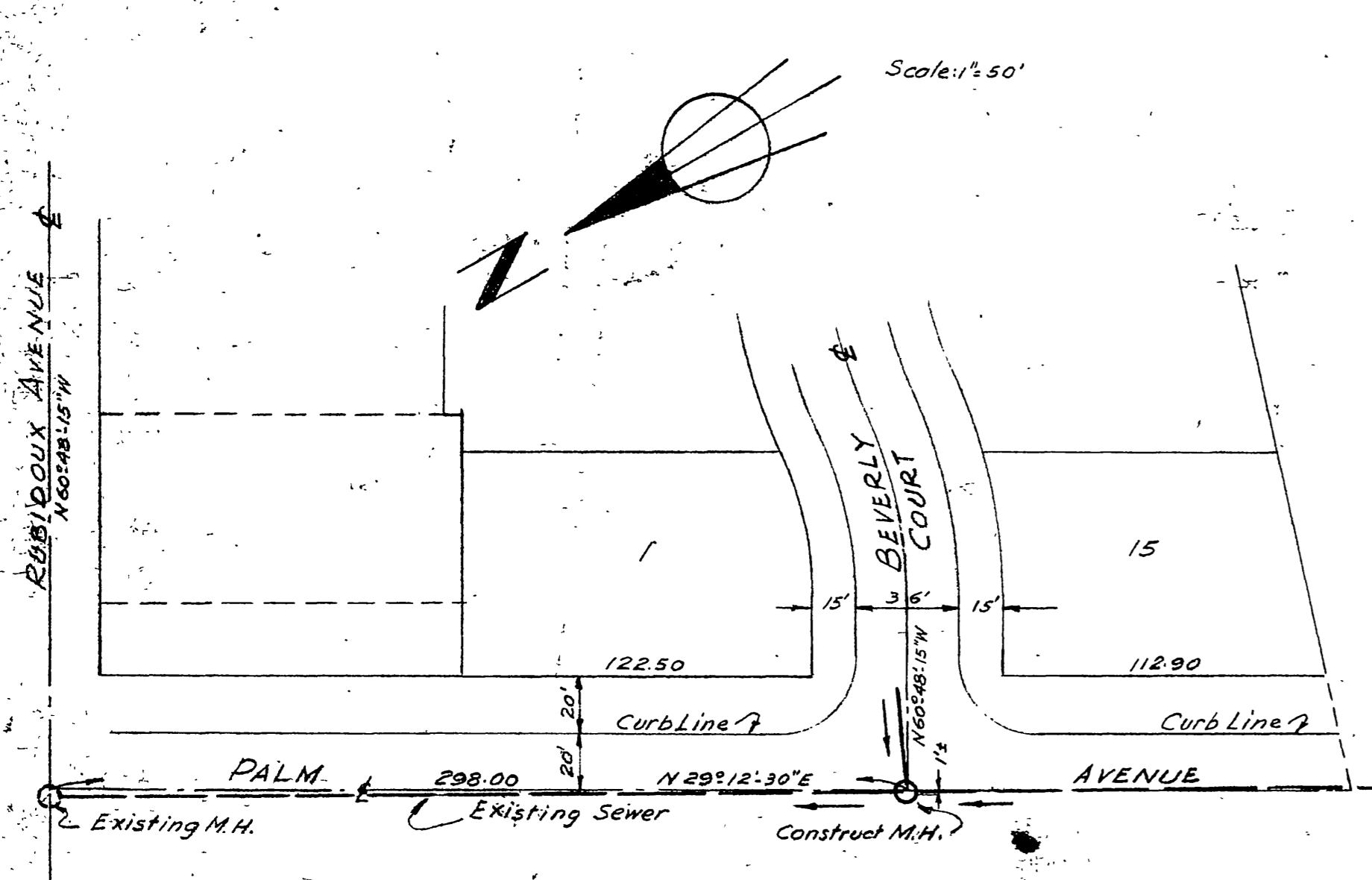


PROPERTY OF
CITY OF RIVERSIDE
DEPT. OF PUBLIC WORKS
ENGINEERING DIVISION



NO. 5-27	DATE
NO. 5-27	DATE
NO. 5-27	DATE
NO. 5-27	DATE



ESTIMATE OF QUANTITIES

- 597' 8" V.C.P.
- 530' 4" V.C.P.
- 15 WYES
- 3 MANHOLES
- 1 CLEANOUT

PROPERTY OF
CITY OF RIVERSIDE
DEPT. OF PUBLIC WORKS
ENGINEERING DIVISION

PREPARED BY: ALBERT A WEBB ASSOCIATES
 APPROVED BY: *Albert A Webb*
 CITY OF RIVERSIDE, CALIFORNIA
 DEPARTMENT OF PUBLIC WORKS
SEWER PLAN & PROFILE
BEVERLY HOMES
BEVERLY COURT & BOONE COURT
 APPROVED BY: *Mark*
 DIRECTOR OF PUBLIC WORKS
 DATE: 04/22/85
 NO. 5-27