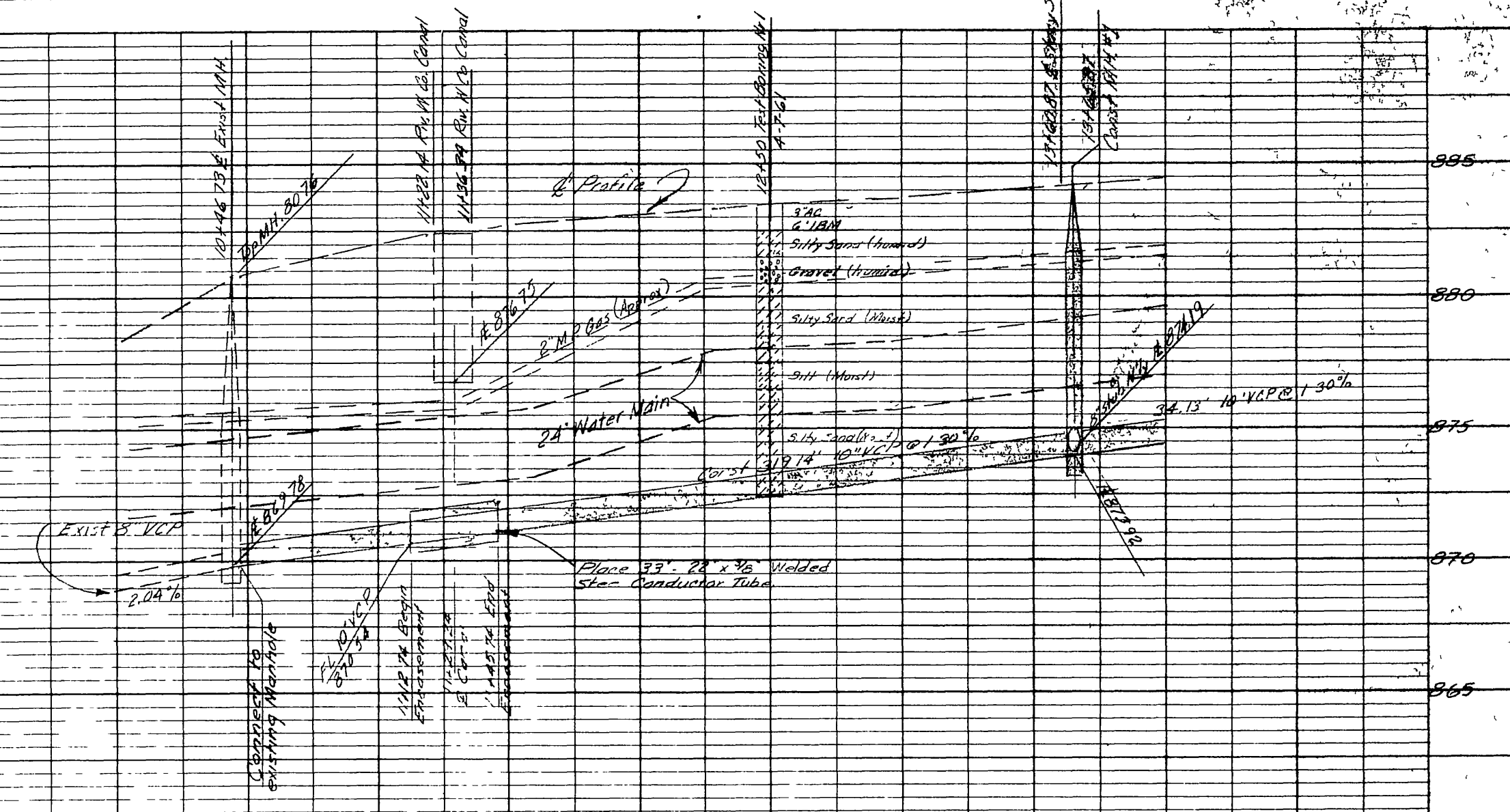
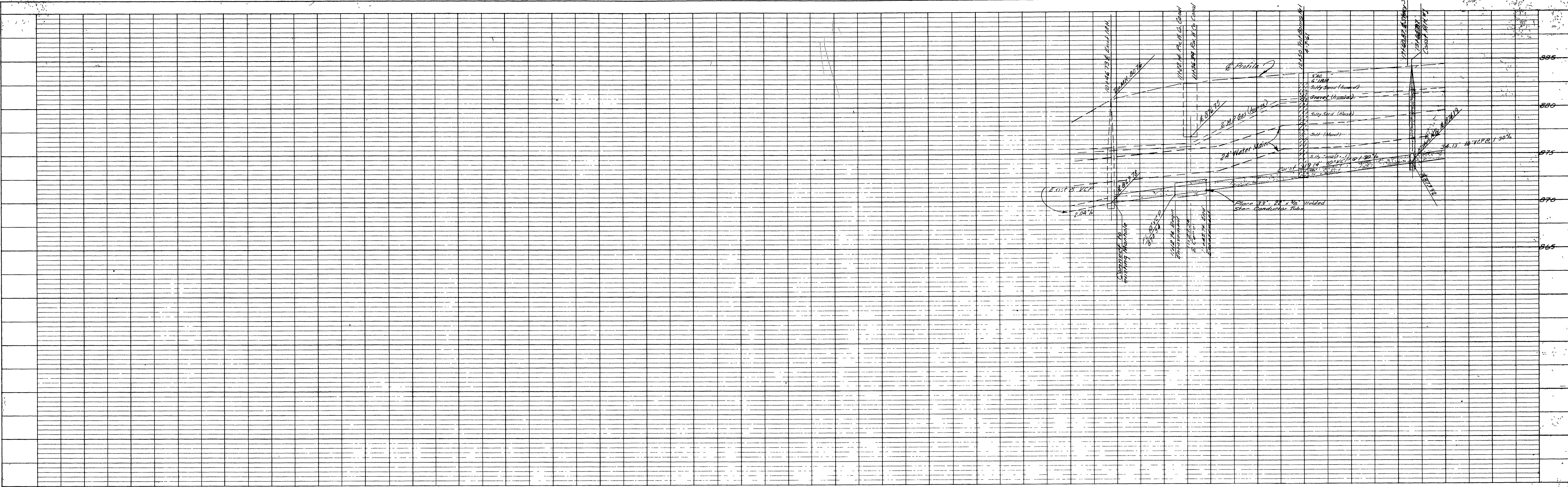


ИП	ЗАДАНИЕ ПОДГОТОВИТЕЛИ
ИП	И. В. ИВАНОВ
ИП	ПРОЕКТИРОВЩИК
ИП	И. В. ИВАНОВ
ИП	ПРОЕКТИРОВЩИК
ИП	И. В. ИВАНОВ
ИП	ПРОЕКТИРОВЩИК
ИП	И. В. ИВАНОВ
ИП	ПРОЕКТИРОВЩИК
ИП	И. В. ИВАНОВ

ИП	И. В. ИВАНОВ
ИП	И. В. ИВАНОВ
ИП	И. В. ИВАНОВ
ИП	И. В. ИВАНОВ
ИП	И. В. ИВАНОВ
ИП	И. В. ИВАНОВ
ИП	И. В. ИВАНОВ
ИП	И. В. ИВАНОВ
ИП	И. В. ИВАНОВ
ИП	И. В. ИВАНОВ



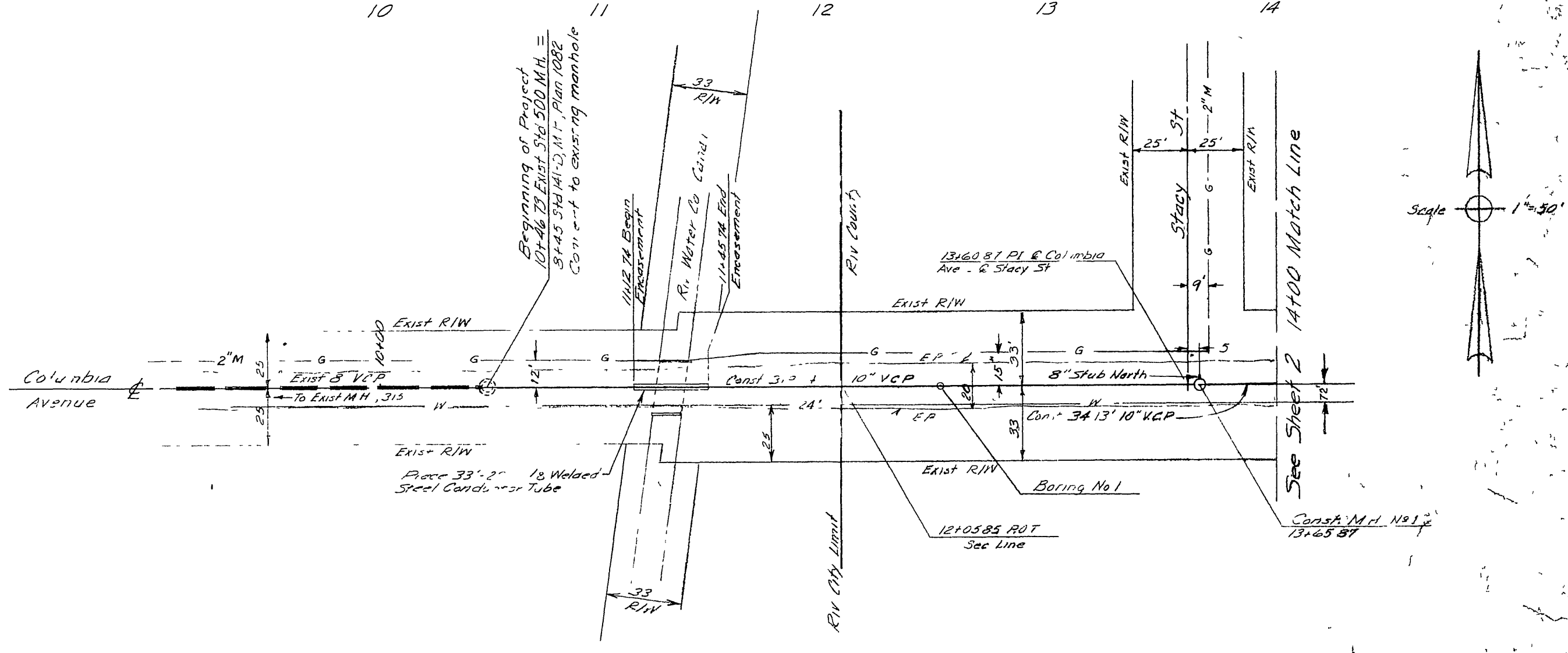
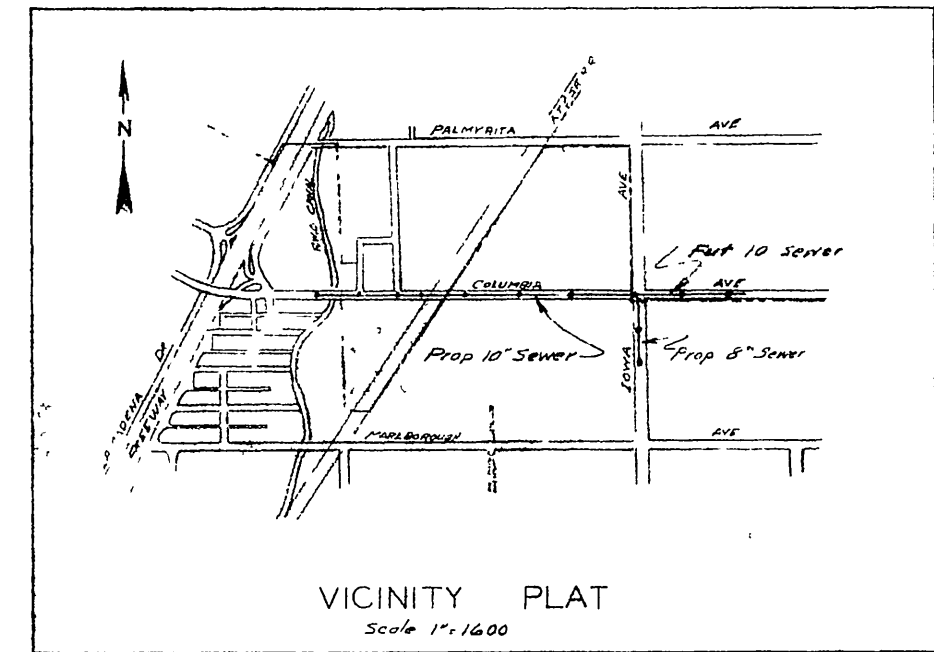
Construction Notes:

- All Construction to be in accordance with City of Riverside Standard Specifications N<sup>o</sup> 460 Dated April 1, 1960 and in accordance with the Special Provisions.
- All Manholes to be constructed as per Standard Drawing N<sup>o</sup> 500, City of Riverside, unless otherwise noted.
- Locations of wyes and laterals to be determined in the field, except as noted.
- All stubs and laterals to be constructed in accordance with Standard Drawing N<sup>o</sup> 562 City of Riverside. Stubs shall be plugged and capped.
- Manhole frames and covers to be set to existing pavement grades, except as noted.
- Construction through Canal RW and RR RW to be in accordance with Riverside Water Company and AT&SF Specifications, respectively.
- The Contractor shall furnish "Street Night" type frames and covers as required by the City, in lieu of existing manhole covers for all manholes.
- The Palm Trees approx 34' East of E Iowa Ave are to be removed by others prior to the construction of the Sewer.

BM ELEV 892.031 - USGS BM 30' N OF COLUMBIA AVE & 25' W OF W RAIL OF AT & SF R R TRACKS

FB 257/2 58/76 S-5/4

SCALE HOR 1"=50' VERT 1"=5'

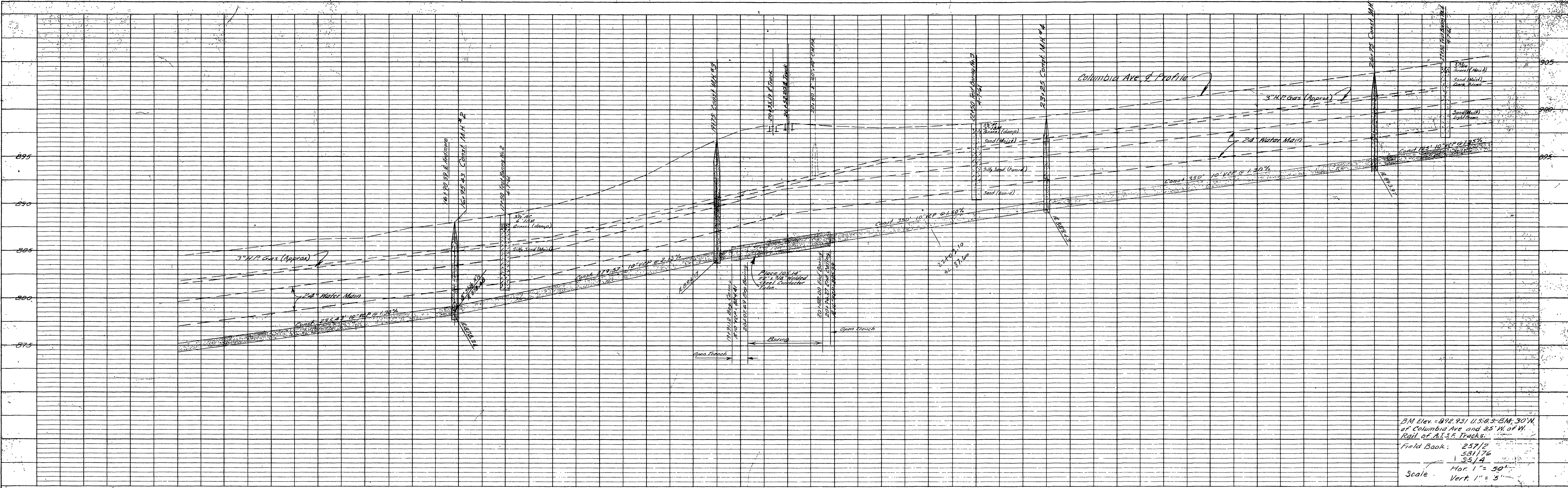


REVISIONS			CITY OF RIVERSIDE CALIFORNIA DEPARTMENT OF PUBLIC WORKS
MARK	DATE	DESCRIPTION	
	9.5.61	AS BUILT	COLUMBIA AVENUE TRUNK SEWER
DESIGNED BY T&N			
DRAWN BY T&N			FROM EXIST. SEWER WLY. RIV. WATER CANAL TO SEWER TRACKS
RECOMMENDED BY			APPROVED BY
ASSISTANT CITY ENGINEER			DIRECTOR OF PUBLIC WORKS
DATE 10/25/60			SHEET 1 OF 1

THE FREDERICK BOES CO. ENGINEERS  
 БУДЕТЪ БЕГИУНОЛИТЕ О Б Р И Е СТИВУДЪ

FIELD BOOK

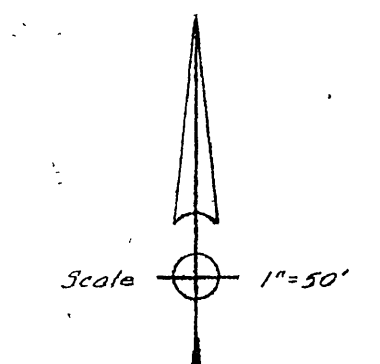
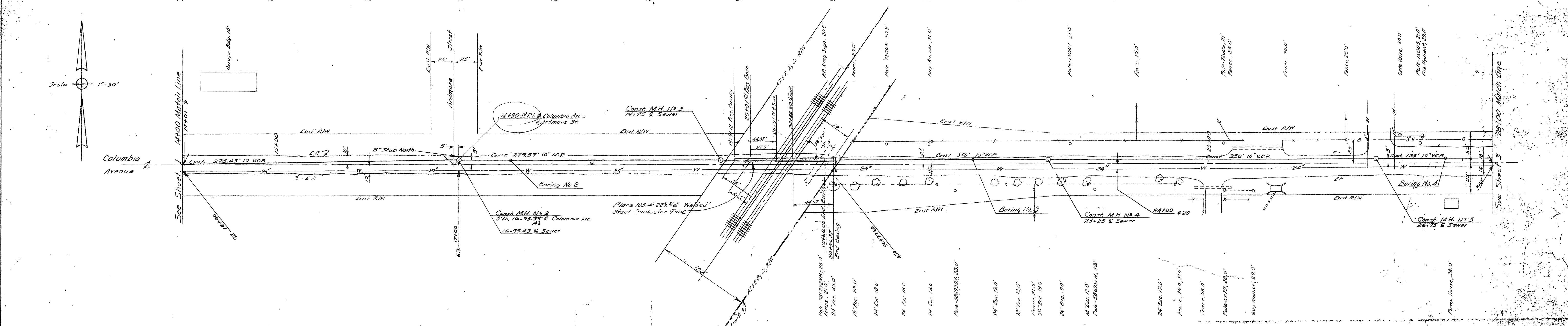
DATE	DESCRIPTION



B.M. Elev. = 892.931 U.S.G.S. B.M. 30' W.  
 of Columbia Ave. and 25' W. of W.  
 Rail. of A.L.P. Tracks.  
 Field Book: 23712  
 531176  
 3314  
 Hor. 1" = 50'  
 Vert. 1" = 5'

FIELD BOOK

DATE	DESCRIPTION

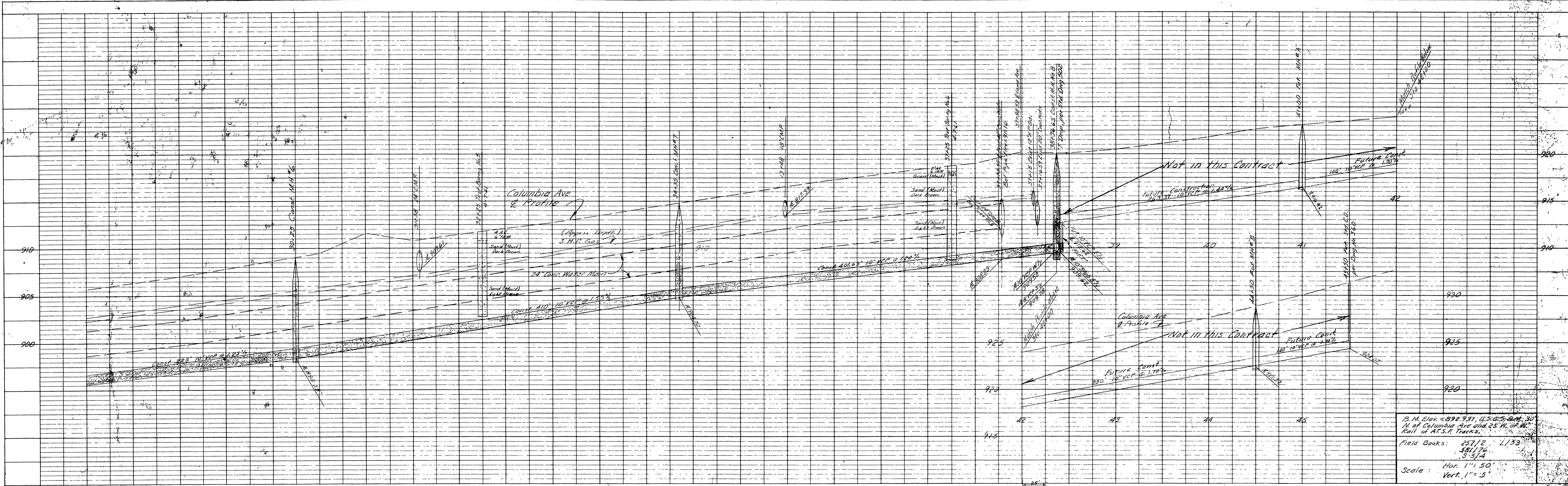


See General Construction Notes, Sheet 1.

REVISIONS		DESCRIPTION	CITY OF RIVERSIDE CALIFORNIA DEPARTMENT OF PUBLIC WORKS	
MARK	DATE			
*	9.1.61	AS BUILT	<p>COLUMBIA AVENUE TRUNK SEWER</p> <p>STA 14400 TO STA 28400</p>	
DESIGNED BY	T.E.H.	CHECKED BY		CON
DRAWN BY	T.E.H., R.M.	APPROVED BY		<i>[Signature]</i>
RECOMMENDED BY	<i>[Signature]</i>	DIRECTOR OF PUBLIC WORKS		J.W.
			ASSISTANT CITY ENGINEER	
			DATE: 10-1-61	

**PROFILE**

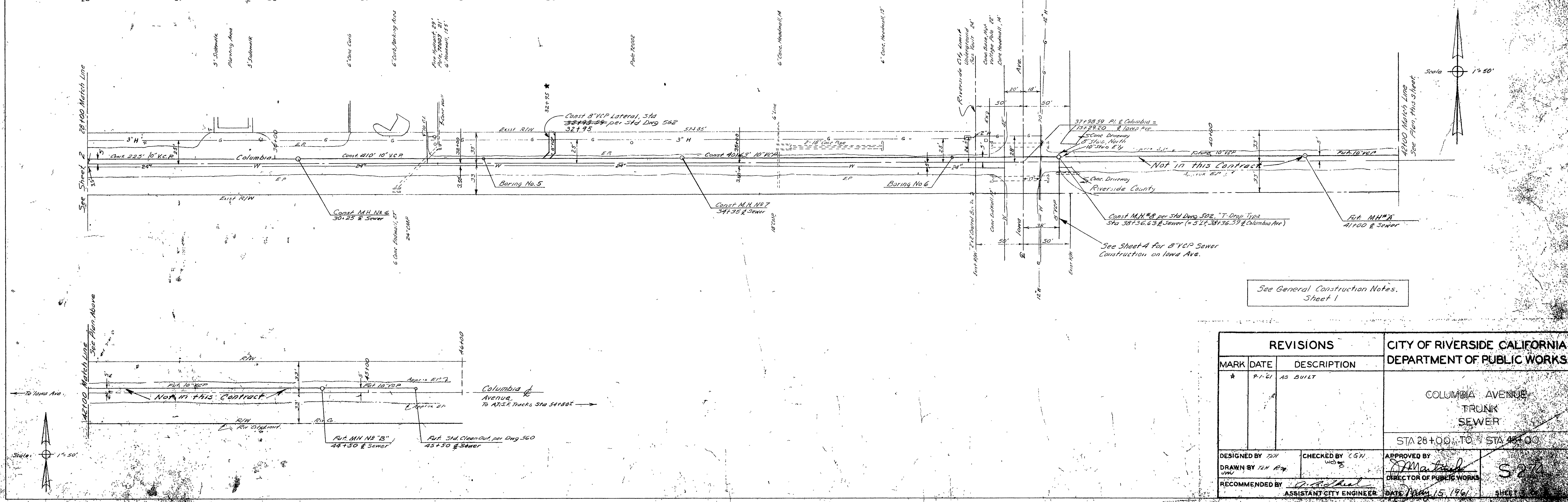
NO. 1	REVISIONS
NO. 2	REVISIONS
NO. 3	REVISIONS
NO. 4	REVISIONS
NO. 5	REVISIONS
NO. 6	REVISIONS
NO. 7	REVISIONS
NO. 8	REVISIONS
NO. 9	REVISIONS
NO. 10	REVISIONS
NO. 11	REVISIONS
NO. 12	REVISIONS
NO. 13	REVISIONS
NO. 14	REVISIONS
NO. 15	REVISIONS
NO. 16	REVISIONS
NO. 17	REVISIONS
NO. 18	REVISIONS
NO. 19	REVISIONS
NO. 20	REVISIONS
NO. 21	REVISIONS
NO. 22	REVISIONS
NO. 23	REVISIONS
NO. 24	REVISIONS
NO. 25	REVISIONS
NO. 26	REVISIONS
NO. 27	REVISIONS
NO. 28	REVISIONS
NO. 29	REVISIONS
NO. 30	REVISIONS
NO. 31	REVISIONS
NO. 32	REVISIONS
NO. 33	REVISIONS
NO. 34	REVISIONS
NO. 35	REVISIONS
NO. 36	REVISIONS
NO. 37	REVISIONS
NO. 38	REVISIONS
NO. 39	REVISIONS
NO. 40	REVISIONS
NO. 41	REVISIONS
NO. 42	REVISIONS
NO. 43	REVISIONS
NO. 44	REVISIONS
NO. 45	REVISIONS
NO. 46	REVISIONS
NO. 47	REVISIONS
NO. 48	REVISIONS
NO. 49	REVISIONS
NO. 50	REVISIONS



B.M. Elev. = 898.931 U.S.G.S. Cont. 30' N. of Columbia Ave and 25' W. of W. Rail of A.S.F. Tracks.  
 Field Books: 257/2 1/33  
 381/76  
 5/3/4  
 Scale: Hor. 1" = 50'  
 Vert. 1" = 5'

**PLAN**

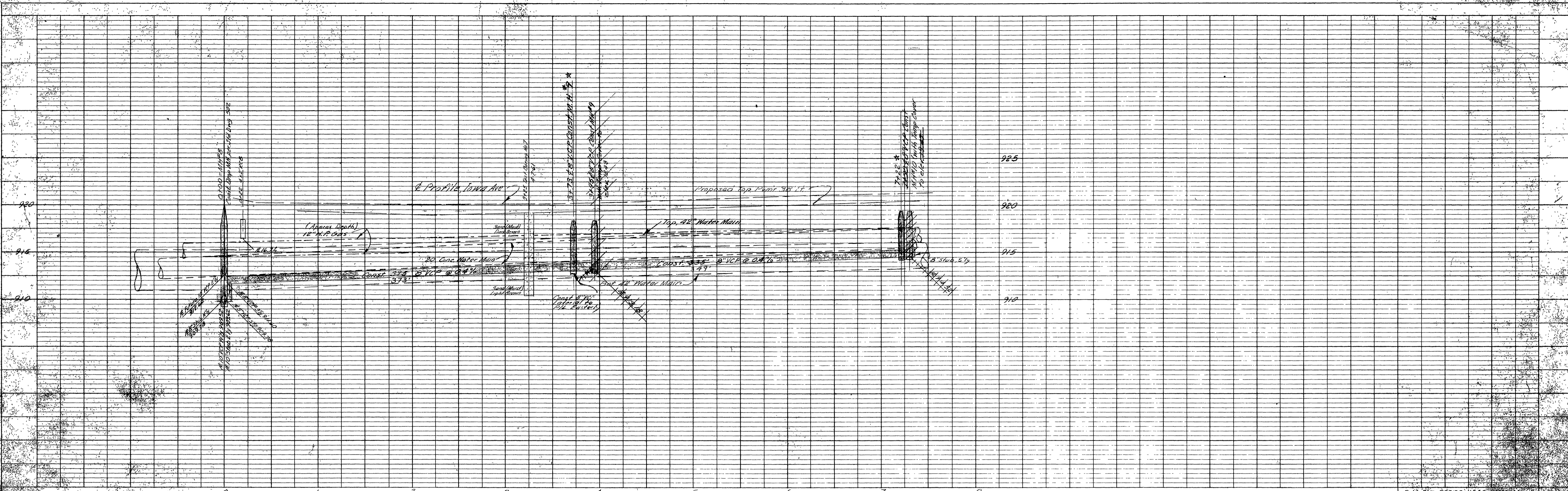
NO. 1	REVISIONS
NO. 2	REVISIONS
NO. 3	REVISIONS
NO. 4	REVISIONS
NO. 5	REVISIONS
NO. 6	REVISIONS
NO. 7	REVISIONS
NO. 8	REVISIONS
NO. 9	REVISIONS
NO. 10	REVISIONS
NO. 11	REVISIONS
NO. 12	REVISIONS
NO. 13	REVISIONS
NO. 14	REVISIONS
NO. 15	REVISIONS
NO. 16	REVISIONS
NO. 17	REVISIONS
NO. 18	REVISIONS
NO. 19	REVISIONS
NO. 20	REVISIONS
NO. 21	REVISIONS
NO. 22	REVISIONS
NO. 23	REVISIONS
NO. 24	REVISIONS
NO. 25	REVISIONS
NO. 26	REVISIONS
NO. 27	REVISIONS
NO. 28	REVISIONS
NO. 29	REVISIONS
NO. 30	REVISIONS
NO. 31	REVISIONS
NO. 32	REVISIONS
NO. 33	REVISIONS
NO. 34	REVISIONS
NO. 35	REVISIONS
NO. 36	REVISIONS
NO. 37	REVISIONS
NO. 38	REVISIONS
NO. 39	REVISIONS
NO. 40	REVISIONS
NO. 41	REVISIONS
NO. 42	REVISIONS
NO. 43	REVISIONS
NO. 44	REVISIONS
NO. 45	REVISIONS
NO. 46	REVISIONS
NO. 47	REVISIONS
NO. 48	REVISIONS
NO. 49	REVISIONS
NO. 50	REVISIONS



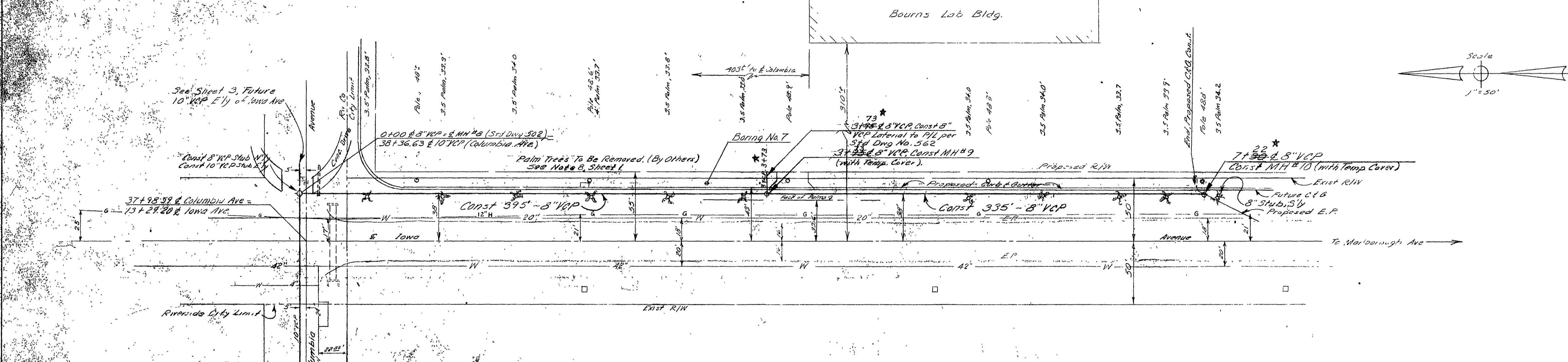
See General Construction Notes, Sheet 1

REVISIONS			CITY OF RIVERSIDE CALIFORNIA DEPARTMENT OF PUBLIC WORKS	
MARK	DATE	DESCRIPTION		
*	9/1/61	AS BUILT		
			COLUMBIA AVENUE TRUNK SEWER	
			STA 28+00 TO STA 44+00	
DESIGNED BY	CHKD BY	APPROVED BY		
DRAWN BY	CHKD BY	APPROVED BY		
RECOMMENDED BY	ASSISTANT CITY ENGINEER	DATE		

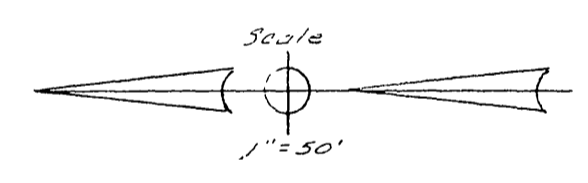
DESIGNED BY	CGW
DRAWN BY	JSM
CHECKED BY	CGW
APPROVED BY	CGW
DATE	9-1-61



DESIGNED BY	CGW
DRAWN BY	JSM
CHECKED BY	CGW
APPROVED BY	CGW
DATE	9-1-61



B.M. Elev 878.73, 1156.5 Elev. 1171.7  
 Columbia St. and Iowa St.  
 at A.I.S.F. Tankage  
 Field Books: 25776, 12125  
 58176  
 53174  
 Scale: Hor. 1"=50'  
 Vert. 1"=5'



See General Construction Notes  
 Sheet 1

REVISIONS			CITY OF RIVERSIDE CALIFORNIA DEPARTMENT OF PUBLIC WORKS
MARK	DATE	DESCRIPTION	
*	9-1-61	AS BUILT N.E.C.	COLUMBIA AVENUE TRUNK SEWER IOWA AVE FROM COLUMBIA AVE SOUTHERLY

DESIGNED BY	CGW	CHECKED BY	CGW	APPROVED BY	
DRAWN BY	JSM				
RECOMMENDED BY		ASSISTANT CITY ENGINEER			