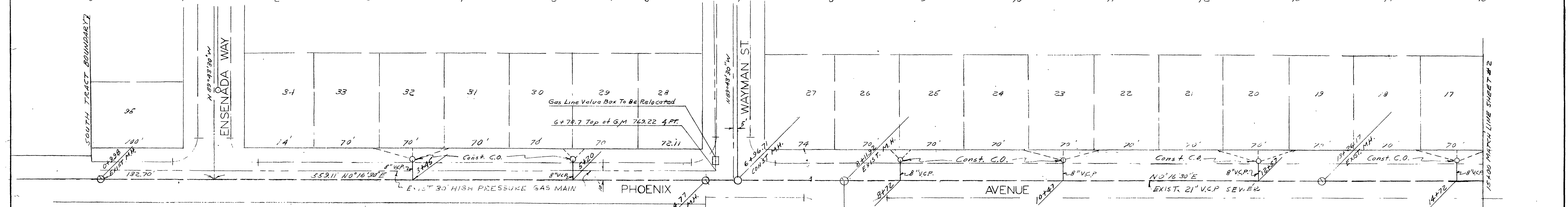
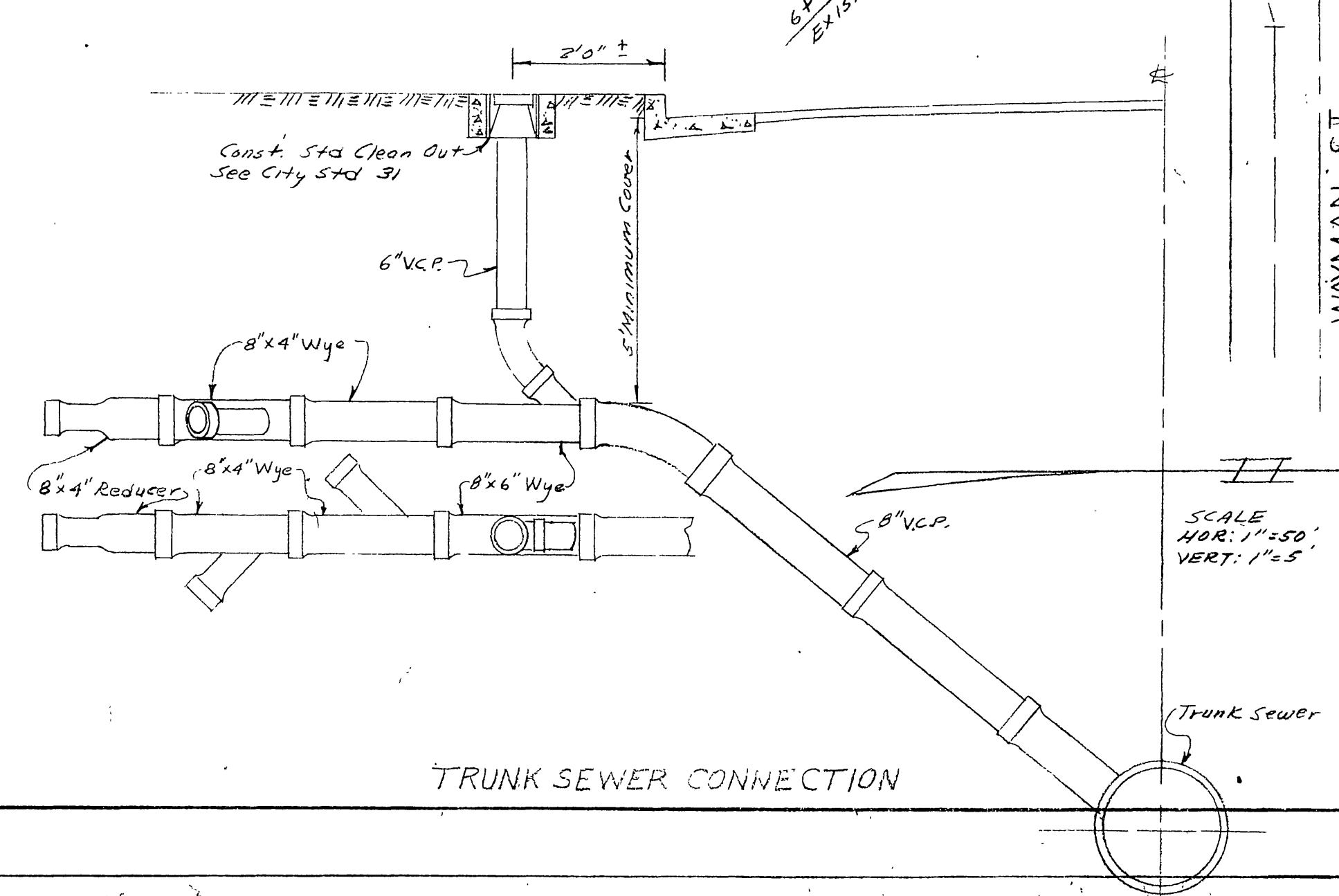


| PROFILE | |
|---------|----|
| DATE | BY |
| NOTED | BY |
| NOTED | BY |
| NOTED | BY |
| NOTED | BY |



| PLAN | |
|-------|----|
| DATE | BY |
| NOTED | BY |
| NOTED | BY |
| NOTED | BY |
| NOTED | BY |



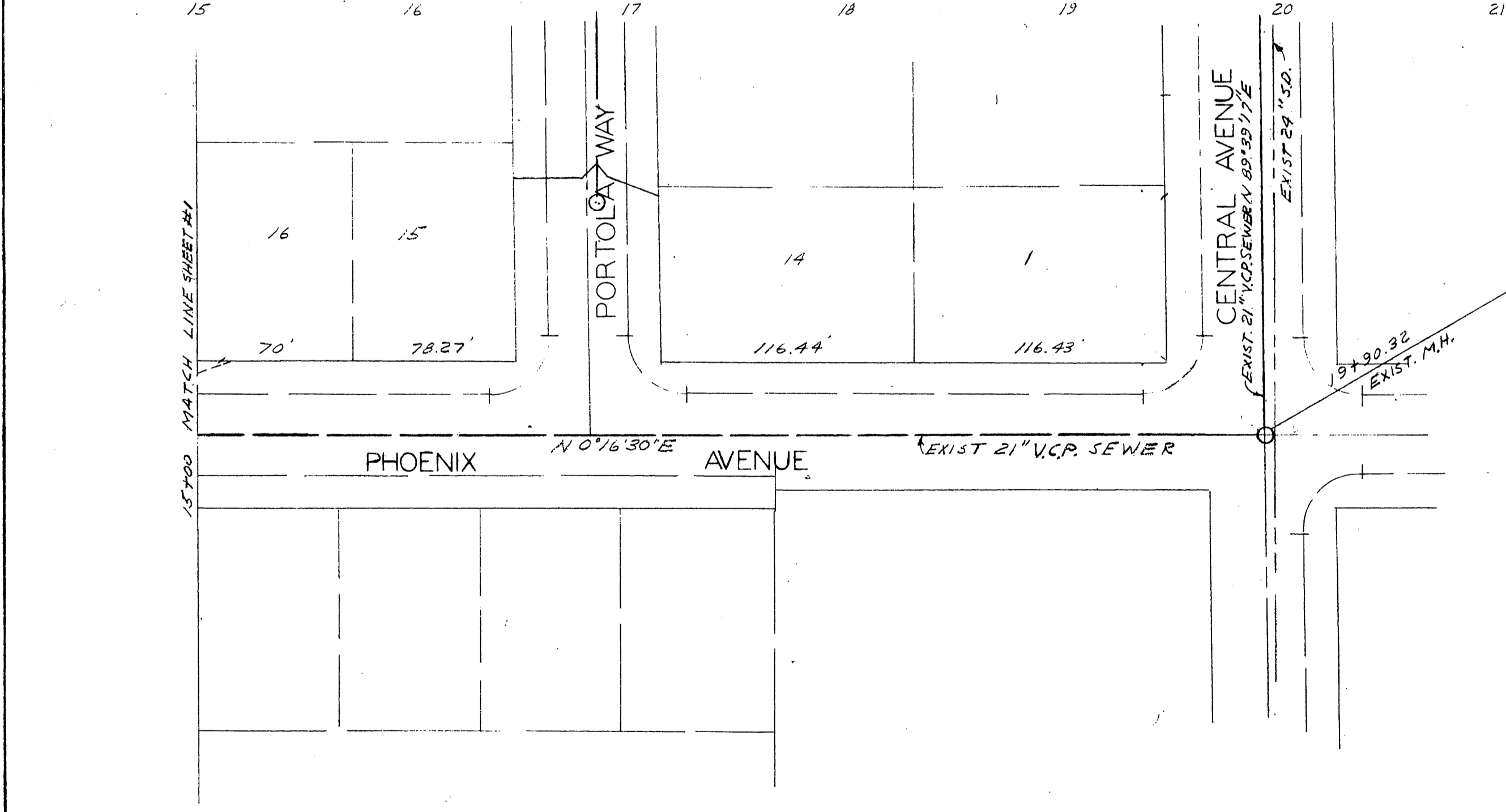
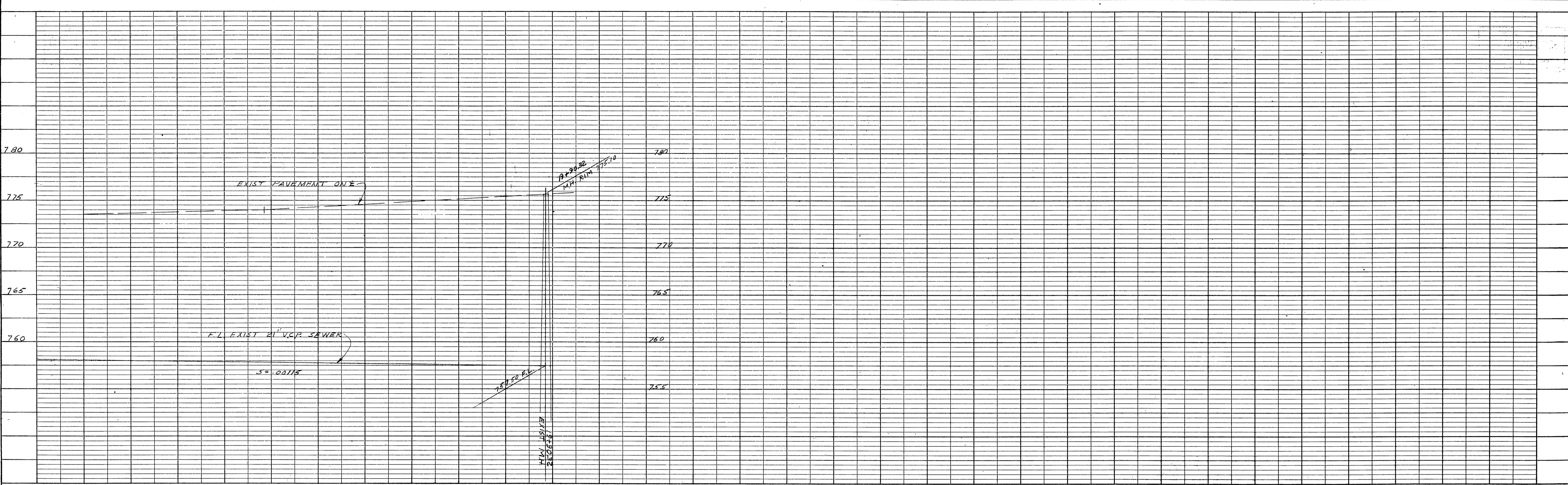
SCALE
HOR: 1"=50'
VERT: 1"=5'

- NOTE:
1. Laterals from houses bordering Central Ave and Phoenix Ave will be connected to chimneys in groups of two or three as shown on plan and chimney detail
 2. Contractors will contact Mr. H.W. Garin at Southern Counties Gas Co. P.O. Box 757 India [Phone 7-3522] before excavating over or near the 30" gas main or its appurtenances

PREPARED BY RIVERSIDE ENGINEERING COMPANY
 APPROVED BY *[Signature]* DATE Dec 29, 1955
 CITY OF RIVERSIDE, CALIFORNIA
 DEPARTMENT OF PUBLIC WORKS
SEWER PLAN & PROFILE
 ARLINGTON PARK
 PHOENIX AVENUE

| | |
|---|--------------------------|
| APPROVED BY <i>[Signature]</i> 4-12-56 | NO. S-28 SHEET 1 OF 6 |
|---|--------------------------|

PLATE 1 - PLAN - PROFILE O.P. R. & R. E. STANBARD
KEUFFEL & ESSER CO., NEW YORK



SCALE
HOR: 1"=50'
VERT: 1"=10'

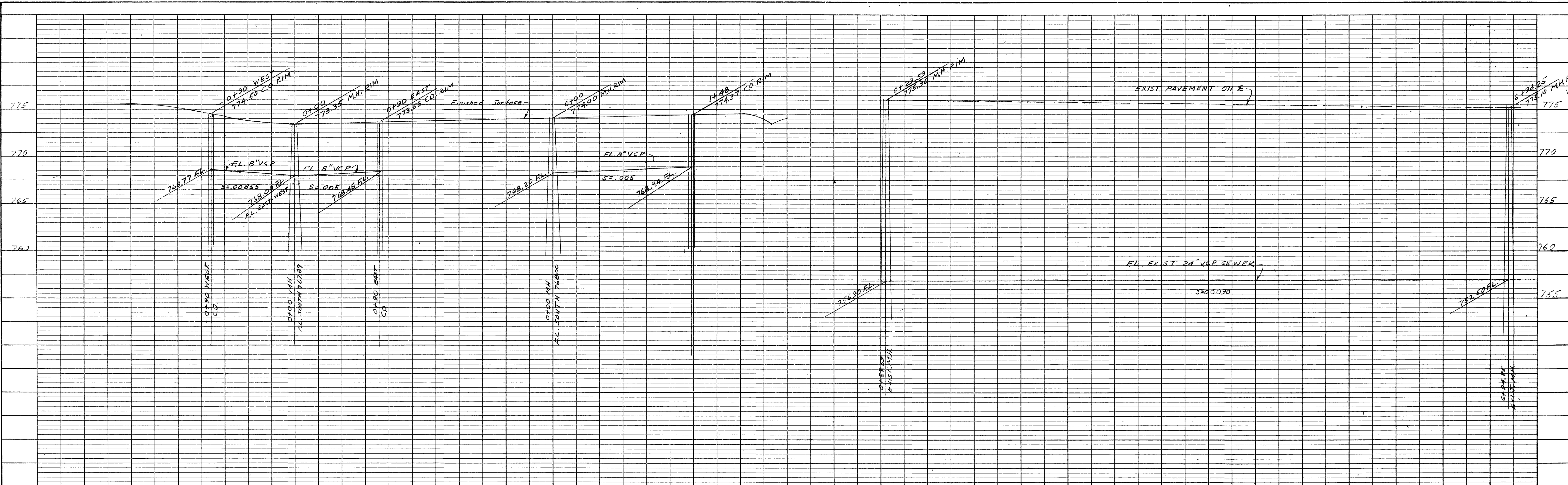
| PROFILE | |
|----------------|------|
| SURVEYED | BY |
| GRADES CHECKED | DATE |
| NOTE BOOK NO. | |
| STRUCTURE NO. | |

| PLAN | |
|--------------------|------|
| SURVEYED | BY |
| ALIGNMENT CHECKED | DATE |
| RT. OF WAY CHECKED | |
| NOTE BOOK NO. | |

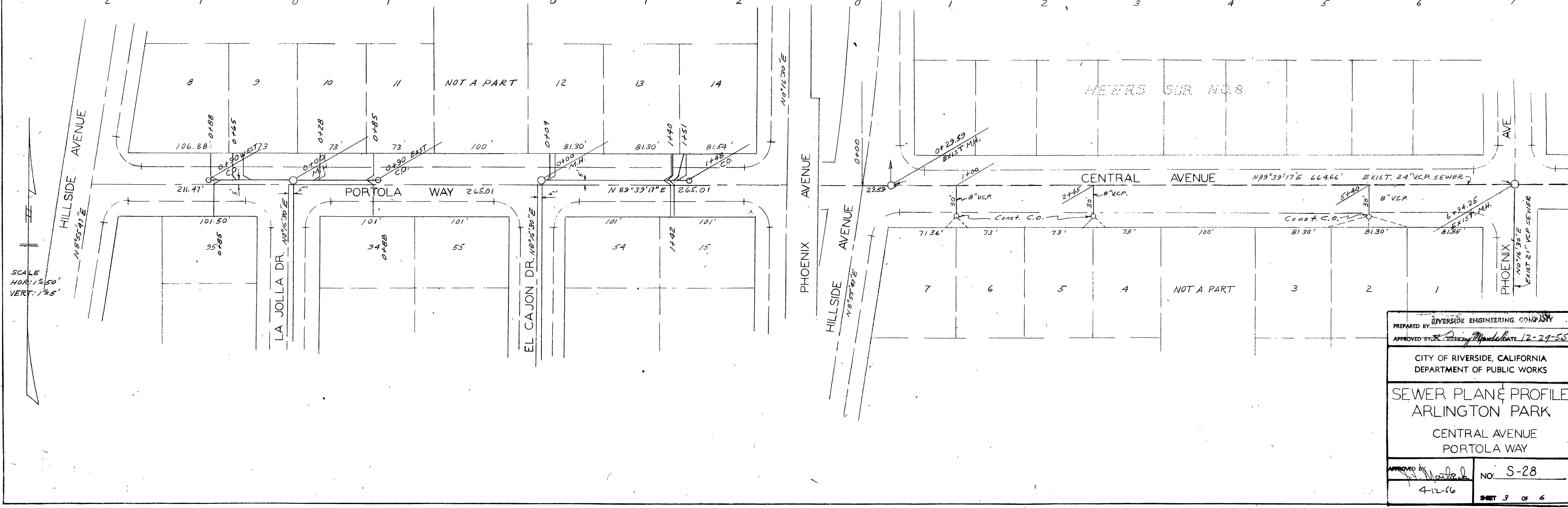
PREPARED BY: RIVERSIDE ENGINEERING COMPANY
 APPROVED BY: *[Signature]* DATE: 12-29-55
 CITY OF RIVERSIDE, CALIFORNIA
 DEPARTMENT OF PUBLIC WORKS
SEWER PLAN & PROFILE
 ARLINGTON PARK
 PHOENIX AVENUE

APPROVED BY: *[Signature]* NO. S-28
 4-12-56 SHEET 2 OF 6

PLATE 1 PLAN PROFILE O.P.R. & R.E. STANDARD
KEUFFEL & ESSER CO., NEW YORK



| PROFILE | |
|----------------------------|------|
| SURVEYED | BY |
| GRADES CHECKED | DATE |
| ALIGNMENT CHECKED | |
| STRUCTURAL DRAWING CHECKED | |



| PLAN | |
|----------------------------|------|
| SURVEYED | BY |
| GRADES CHECKED | DATE |
| ALIGNMENT CHECKED | |
| STRUCTURAL DRAWING CHECKED | |

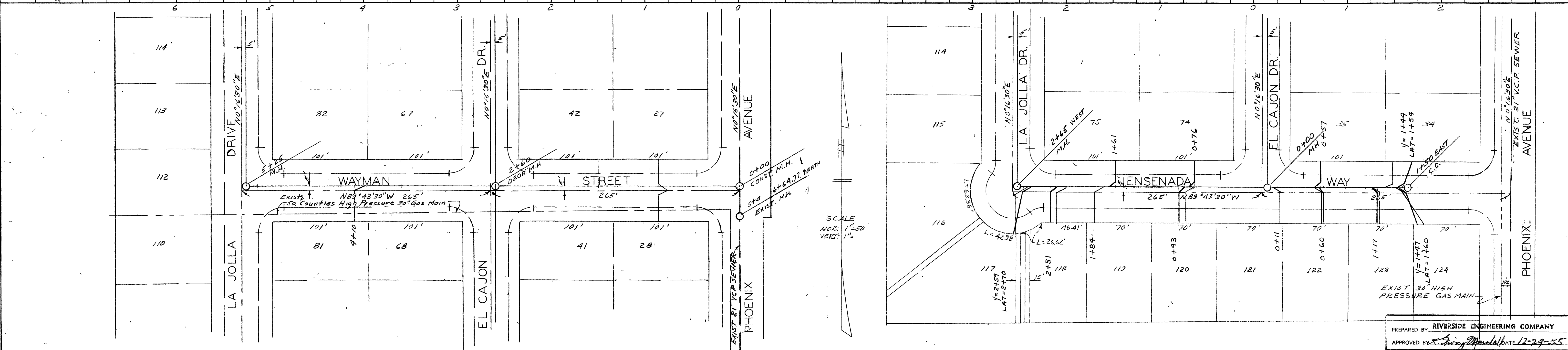
PREPARED BY RIVERSIDE ENGINEERING COMPANY
 APPROVED BY *[Signature]* DATE 12-29-55

CITY OF RIVERSIDE, CALIFORNIA
 DEPARTMENT OF PUBLIC WORKS

SEWER PLAN & PROFILE
 ARLINGTON PARK
 CENTRAL AVENUE
 PORTOLA WAY

APPROVED BY *[Signature]* DATE 4-12-56
 NO. S-28
 SHEET 3 OF 6

PLATE 1: PLAN, PROFILE, O.P. & R.E. STANDARD
KEUFFEL & ESSER CO., NEW YORK



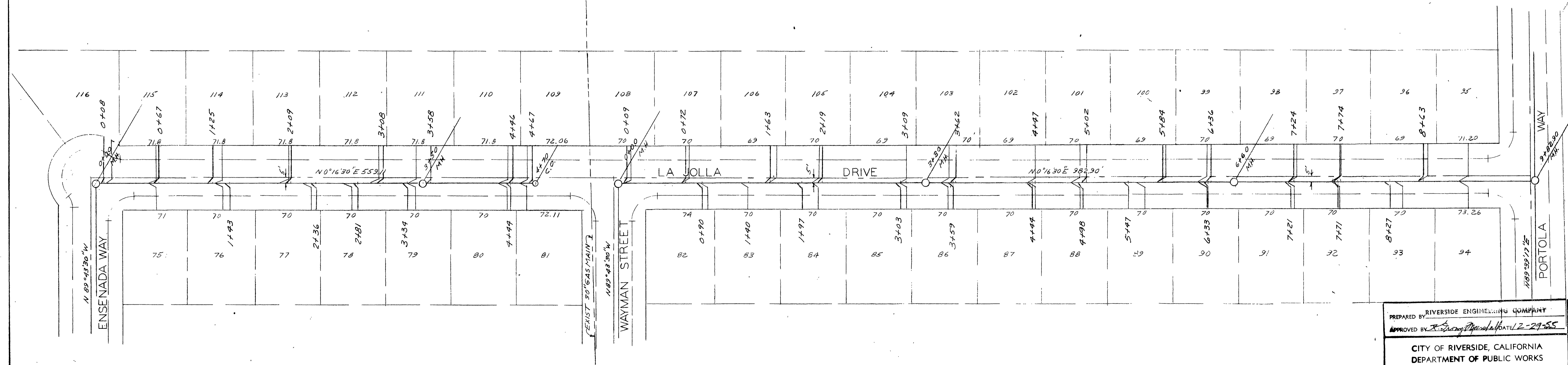
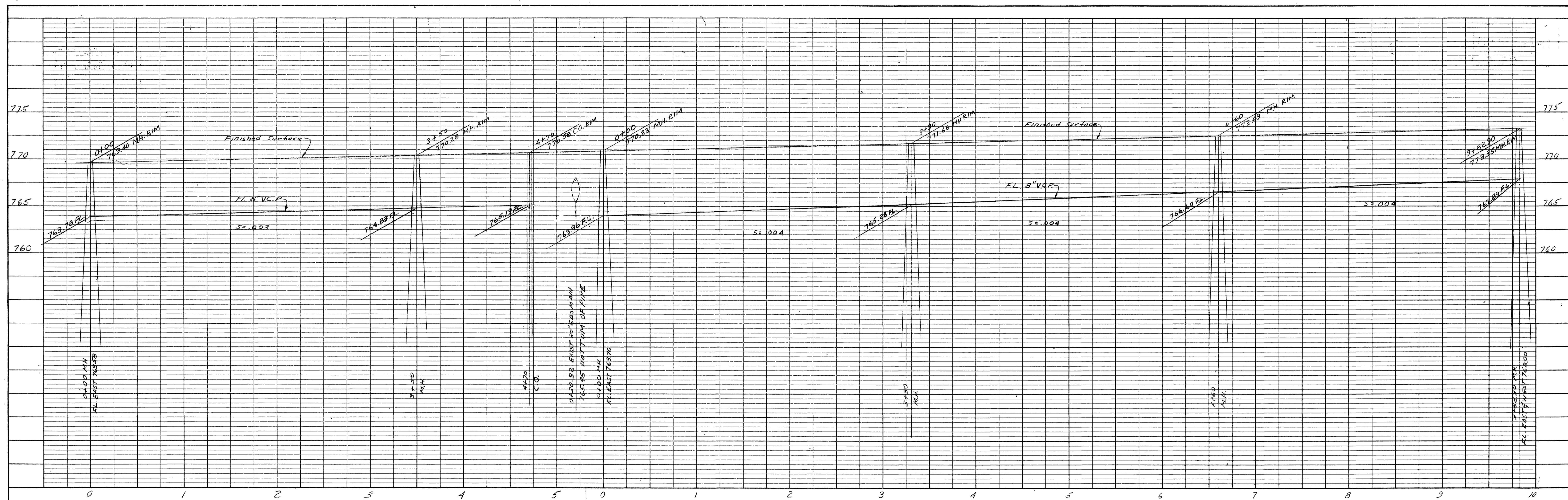
| PROFILE | |
|----------|----|
| NO. | BY |
| DATE | |
| SURVEYED | |
| CHECKED | |
| BY | |
| DATE | |

| PLAN | |
|----------|----|
| NO. | BY |
| DATE | |
| SURVEYED | |
| CHECKED | |
| BY | |
| DATE | |

PREPARED BY: RIVERSIDE ENGINEERING COMPANY
 APPROVED BY: *[Signature]* DATE 12-29-55
 CITY OF RIVERSIDE, CALIFORNIA
 DEPARTMENT OF PUBLIC WORKS
SEWER PLAN & PROFILE
 ARLINGTON PARK
 ENSEÑADA WAY
 WAYMAN STREET
 APPROVED BY: *[Signature]* NO. S-28
 4-12-56 SHEET 4 OF 6

SCALE
HOR: 1"=50'
VERT: 1"=5'

MADE IN U.S.A. 347-1 ON "ALUMINUM" NO. 1987 TRADING PAPER
KEUFFEL & ESSER CO., NEW YORK
PLATE 1 PLAN, PROFILE O.P. R. 87 E STANDARD



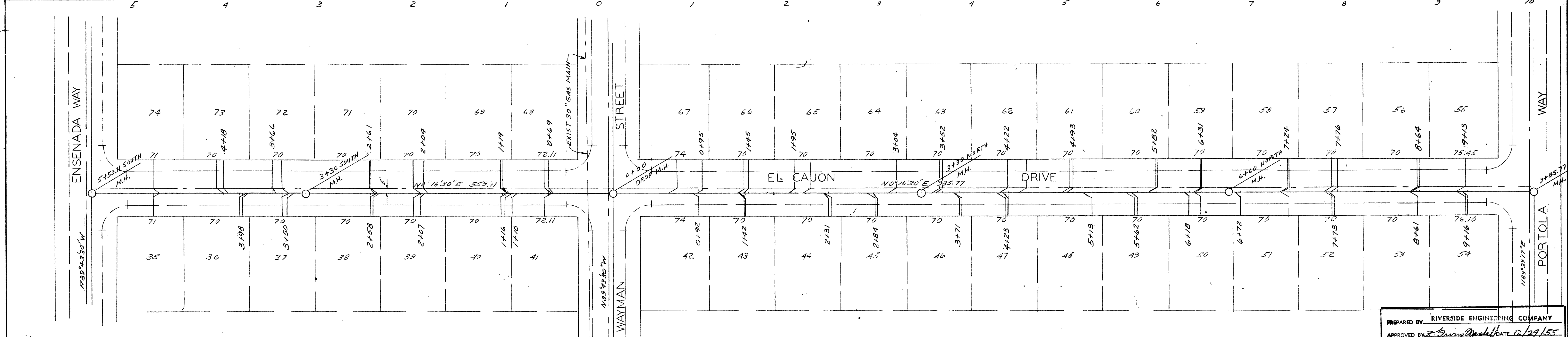
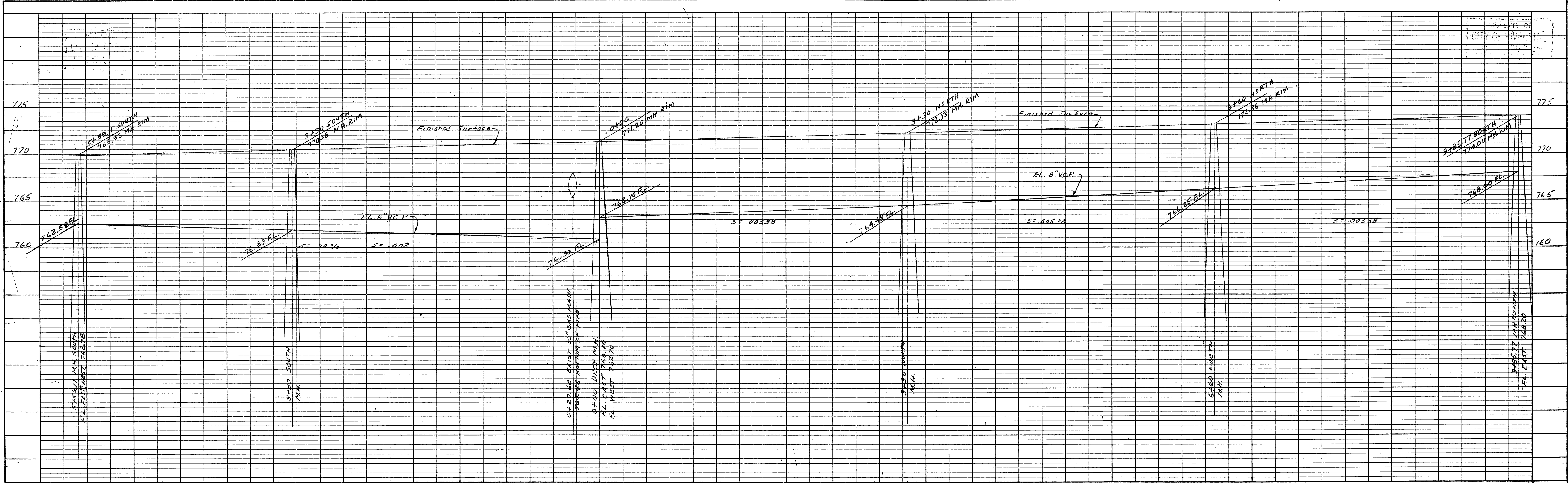
SCALE
HOR. : 1"=50'
VERT. : 1"=

| PROFILE | |
|---------|------|
| NO. | DATE |
| BY | |
| DATE | |
| BY | |
| DATE | |
| BY | |
| DATE | |

| PLAN | |
|------|------|
| NO. | DATE |
| BY | |
| DATE | |
| BY | |
| DATE | |
| BY | |
| DATE | |

PREPARED BY RIVERSIDE ENGINEERING COMPANY
 APPROVED BY *[Signature]* DATE 2-29-55
 CITY OF RIVERSIDE, CALIFORNIA
 DEPARTMENT OF PUBLIC WORKS
 SEWER PLAN & PROFILE
 ARLINGTON PARK
 LA JOLLA DRIVE
 APPROVED BY *[Signature]* NO. S-28
 4-12-56 SHEET 5 OF 6

PLATE 1. PLAN, PROFILE, O. R. R. & E. STANDARD
KEUFFEL & ESSER CO., NEW YORK
MADE IN U.S.A. 347-1 ON "ALABAMA" NO. 1241 TRACING PAPER
SEE R. 107 1951



SCALE
HOR: 1"=50'
VERT: 1"=2'

| PROFILE | |
|--------------|------|
| DESIGNED BY | DATE |
| NOTED BY | |
| PLOTTED BY | |
| CHECKED BY | |
| STATIONED BY | |

| PLAN | |
|--------------|------|
| DESIGNED BY | DATE |
| NOTED BY | |
| PLOTTED BY | |
| CHECKED BY | |
| STATIONED BY | |

PREPARED BY RIVERSIDE ENGINEERING COMPANY
 APPROVED BY *[Signature]* DATE 12/29/55
 CITY OF RIVERSIDE, CALIFORNIA
 DEPARTMENT OF PUBLIC WORKS
SEWER PLAN & PROFILE
 ARLINGTON PARK
 EL CAJON DRIVE
 APPROVED BY *[Signature]* NO. S-28
 4-12-56 SHEET 6 OF 6