

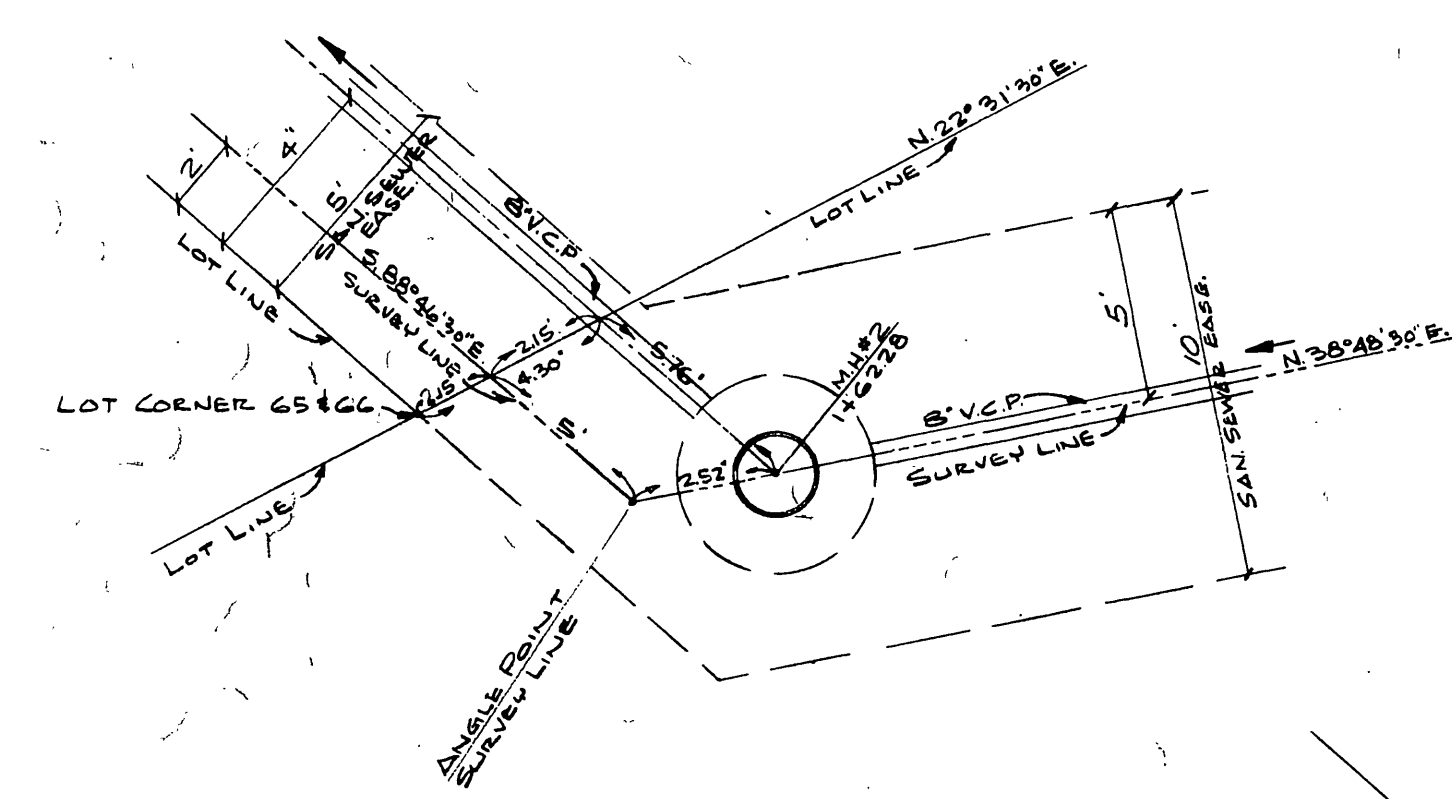
SCALE HORIZ. 1"=50'
 VERT. 1"=5'
 FIELD BOOK: 1511 ACT. NO. 6/74

BENCH MARK:
 CAPPED MONUMENT AT STA 0+6275 ON
 & BONNIE BRAE ST ELEV. 999.695

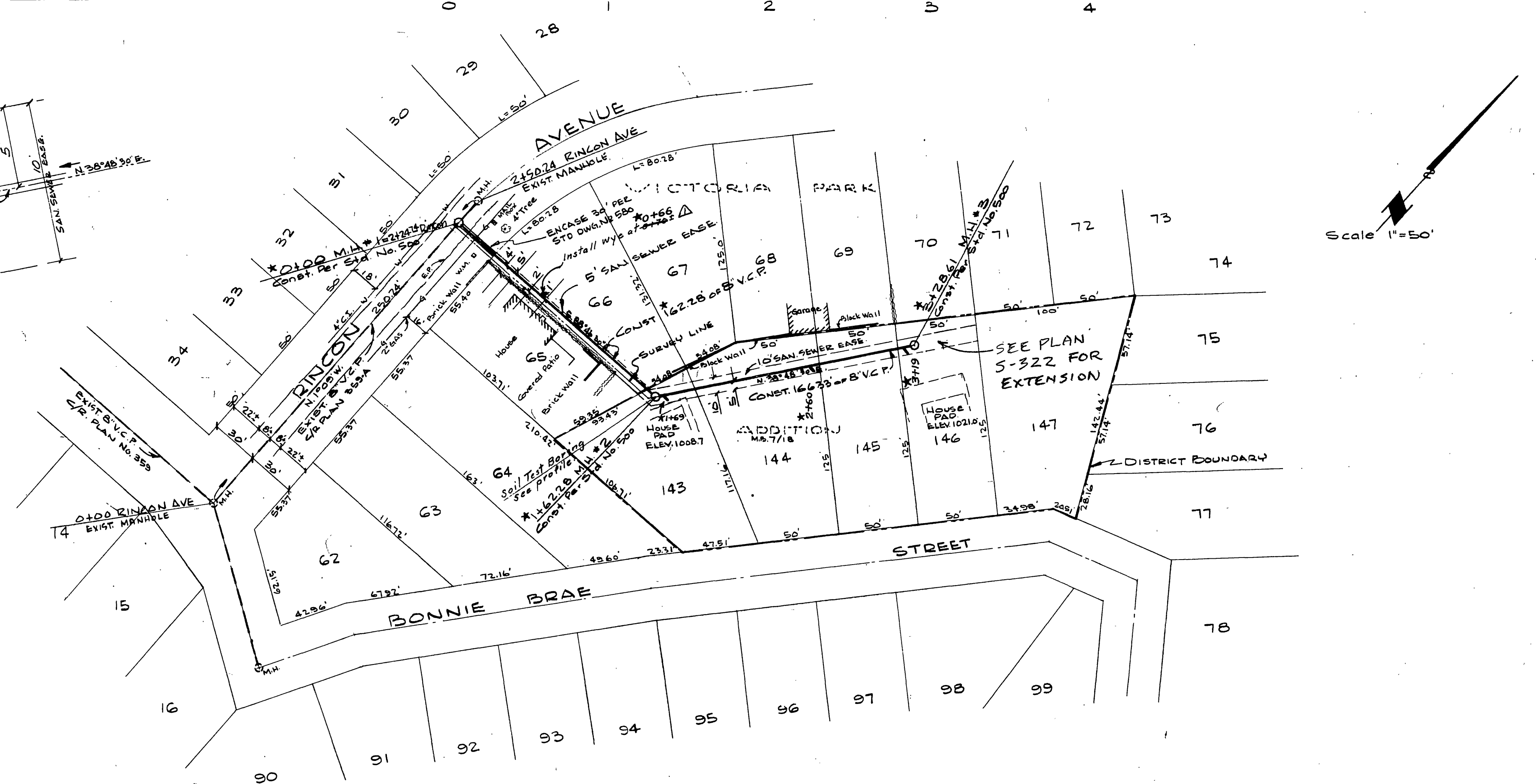
- GENERAL NOTES:
- CONSTRUCTION SHALL BE IN ACCORDANCE WITH CITY OF RIVERSIDE, DEPARTMENT OF PUBLIC WORKS SPECIFICATIONS NO. 460 AND STANDARD DRAWINGS.
 - ALL HOUSE CONNECTION WYES SHALL BE LOCATED IN THE FIELD.

QUANTITY ESTIMATE

8" VITRIFIED CLAY PIPE	528 L.F.
8" x 4" V.C.P. WYES	4 EA.
MANHOLES, STD. 500	5 BA.
CONC. ENCASMENT - 8" V.C.P.	30 L.F.
PAVEMENT REPLACEMENT	63 S.F.



LOCATION DETAIL
 MANHOLE NO. 2
 STA. 1+63.05
 No Scale



REVISIONS			CITY OF RIVERSIDE CALIFORNIA DEPARTMENT OF PUBLIC WORKS	
MARK	DATE	DESCRIPTION		
Δ	7-31-61	Added 8" x 4" wye con. wye 9.00'		
*	12-1-61	"As Built" #801		

DESIGNED BY <i>dw</i>	CHECKED BY <i>Ernest N. Wall</i> R.E. 2876	APPROVED BY <i>[Signature]</i> DIRECTOR OF PUBLIC WORKS	S-280 SHEET 1 OF 1
DRAWN BY <i>dw</i>	RECOMMENDED BY <i>[Signature]</i> ASSISTANT CITY ENGINEER	DATE <i>April 3, 1944</i>	

PROFILE

DESIGNED	DATE
NOTED	
CHECKED	
DATE	

PLAN

DESIGNED	DATE
NOTED	
CHECKED	
DATE	