





ASSESSMENT NO. 476

# DIAGRAM

EXHIBITING VANCE - DOYLE SANITARY SEWER DISTRICT  
IN THE CITY OF RIVERSIDE, CALIFORNIA, AND THE WORK WHICH HAS BEEN DONE  
PURSUANT TO THE CONTRACT BETWEEN THE SUPERINTENDENT OF STREETS OF  
SAID CITY AND H.M. ROBERTSON, INC., AND G.R. EQUIPMENT RENTAL CO. DATED NOV. 1, 1961  
FOR THE CONSTRUCTION OF A SANITARY SEWER AND APPURTENANT WORK

AS IS MORE PARTICULARLY DESCRIBED IN SAID CONTRACT, TO WHICH REFERENCE  
IS HEREBY MADE FOR FURTHER PARTICULARS.  
SAID DIAGRAM ALSO SHOWS EACH SEPARATE LOT OR PARCEL OF LAND WITHIN THE  
LIMITS OF THE ASSESSMENT DISTRICT, AND THE DIMENSIONS OF EACH SUCH LOT OR  
PARCEL OF LAND, AND THE RELATIVE LOCATION OF THE SAME TO THE WORK DONE.  
EACH LOT OR PARCEL OF LAND IS NUMBERED IN RED INK TO CORRESPOND TO THE  
RED INK NUMBERS IN THE ASSESSMENT.  
HEREIN FIGURES NEXT TO PROPERTY LINES SHOW LENGTH OF SAID LINES IN FEET  
AND DECIMALS THEREOF.  
THE MARK (') MEANS FEET.  
PROPERTY LINES THAT DIFFER FROM THE RECORDED SUBDIVISIONS ARE SHOWN BY  
BROKEN LINES.  
THE DISTRICT BENEFITED IS BOUNDED BY A HEAVY DASHED LINE.  
PROPERTY INCLUDED IN THIS ASSESSMENT IS SHOWN ON THE FOLLOWING RECORD-  
ED MAPS:  
HARMONY DALE TRACT - M.B. 27, PG. 59 AND 60, RIVERSIDE CO. REC.

HEREIN THE DIFFERENT KINDS OF WORK  
PERFORMED ARE SHOWN AS FOLLOWS:

8" MAIN SEWER	
4" HOUSE CONNECTION LATERAL	
8" x 4" WYE	
MANHOLE	

HERE FOLLOWS A STATEMENT OF AMOUNTS OF  
DIFFERENT KINDS OF WORK DONE PURSUANT TO  
THE HERE-IN-BEFORE IDENTIFIED CONTRACT  
AND TO RESOLUTION OF INTENTION NO. 9190,  
ADOPTED BY THE CITY COUNCIL OF THE CITY  
OF RIVERSIDE, CALIFORNIA ON THE 1ST DAY  
OF AUGUST, 1961.

2586	L.F.	8" VITRIFIED CLAY PIPE
2531	L.F.	4" VITRIFIED CLAY PIPE
74	EA.	8" x 4" WYES
6	EA.	MANHOLES - STD. DWG. NO. 500
10,700	S.F.	PAVEMENT REPLACEMENT

I HEREBY CERTIFY THAT THE ABOVE WORK WAS DONE IN ACCORDANCE  
WITH LINES AND GRADES FURNISHED OR APPROVED BY ME, AND THAT  
THE DIAGRAM OF THE ASSESSMENT DISTRICT AND THE QUANTITIES  
OF WORK SHOWN HEREON ARE CORRECT.

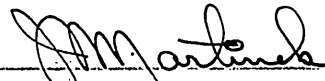
  
CITY ENGINEER OF THE  
CITY OF RIVERSIDE, CALIFORNIA

DIAGRAM RECEIVED:

THIS        DAY OF        , 19        .

\_\_\_\_\_  
SUPERINTENDENT OF STREETS OF THE  
CITY OF RIVERSIDE, CALIFORNIA

RECORDED:

AT        O'CLOCK,        .M.,  
THIS        DAY OF        , 19        .

\_\_\_\_\_  
SUPERINTENDENT OF STREETS OF THE  
CITY OF RIVERSIDE, CALIFORNIA

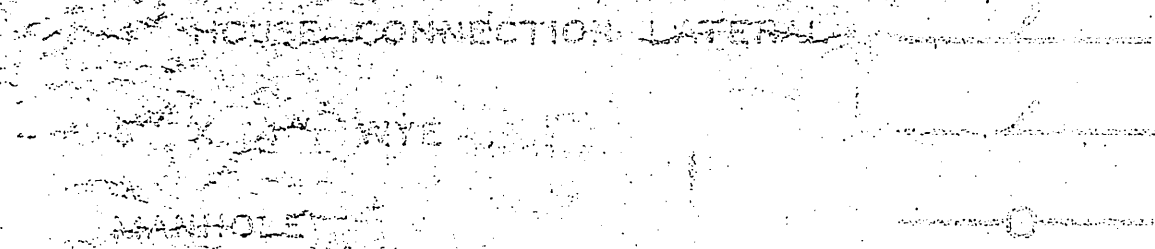
ASSESSMENT NO. 478

DIAGRAM

EXHIBITING VANCE - DOYLE SANITARY SEWER DISTRICT  
 IN THE CITY OF RIVERSIDE, CALIFORNIA, AND THE WORK WHICH HAS BEEN DONE  
 PURSUANT TO THE CONTRACT BETWEEN THE SUPERINTENDENT OF STREETS OF  
 SAID CITY AND K.L. ROBERTSON, INC., AND S.P. EQUIPMENT RENTAL CO. DATED NOV. 1, 1981  
 FOR THE CONSTRUCTION OF A SANITARY SEWER AND APPURTENANT WORK

AS IS MORE PARTICULARLY DESCRIBED IN SAID CONTRACT, TO WHICH REFERENCE  
 IS HEREBY MADE FOR FURTHER PARTICULARS.  
 SAID DIAGRAM ALSO SHOWS EACH SEPARATE LOT OR PARCEL OF LAND WITHIN THE  
 LIMITS OF THE ASSESSMENT DISTRICT, AND THE DIMENSIONS OF EACH SUCH LOT OR  
 PARCEL OF LAND, AND THE RELATIVE LOCATION OF THE SAME TO THE WORK DONE.  
 EACH LOT OR PARCEL OF LAND IS NUMBERED IN RED INK TO CORRESPOND TO THE  
 RED INK NUMBERS IN THE ASSESSMENT.  
 HEREIN FIGURES NEXT TO PROPERTY LINES SHOW LENGTH OF SAID LINES IN FEET  
 AND DECIMALS THEREOF.  
 THE MARK (') MEANS FEET.  
 PROPERTY LINES THAT DIFFER FROM THE RECORDED SUBDIVISIONS ARE SHOWN BY  
 BROKEN LINES.  
 THE DISTRICT BENEFITED IS BOUNDED BY A HEAVY DASHED LINE.  
 PROPERTY INCLUDED IN THIS ASSESSMENT IS SHOWN ON THE FOLLOWING RECORD-  
 ED MAPS:  
 HARMONY DALE TRACT - M.B. 27, PG. 39 AND 40, RIVERSIDE CO. REC.

HEREIN THE DIFFERENT KINDS OF WORK  
 PERFORMED ARE SHOWN AS FOLLOWS:



HERE FOLLOWS A STATEMENT OF AMOUNTS OF  
 DIFFERENT KINDS OF WORK DONE PURSUANT TO  
 THE HERE-IN-BEFORE IDENTIFIED CONTRACT  
 AND TO RESOLUTION OF INTENTION NO. 8190 ,  
 ADOPTED BY THE CITY COUNCIL OF THE CITY  
 OF RIVERSIDE, CALIFORNIA ON THE 1ST DAY  
 OF AUGUST , 1981 .

- 2586 L.F. 8" VITRIFIED CLAY PIPE
- 2531 L.F. 4" VITRIFIED CLAY PIPE
- 74 EA. 3" X 4" WYES
- 6 EA. MANHOLES - STD. DWG. NO. 509
- 10,700 S.F. PAVEMENT REPLACEMENT

I HEREBY CERTIFY THAT THE ABOVE WORK WAS DONE IN ACCORDANCE  
 WITH LINES AND GRADES FURNISHED OR APPROVED BY ME, AND THAT  
 THE DIAGRAM OF THE ASSESSMENT DISTRICT AND THE QUANTITIES  
 OF WORK SHOWN HEREON ARE CORRECT.

*[Signature]*  
 CITY ENGINEER OF THE  
 CITY OF RIVERSIDE, CALIFORNIA

DIAGRAM RECEIVED:

THIS DAY OF , 19 .

SUPERINTENDENT OF STREETS OF THE  
 CITY OF RIVERSIDE, CALIFORNIA

RECORDED:

AT O'CLOCK, .M.,  
 THIS DAY OF , 19 .

SUPERINTENDENT OF STREETS OF THE  
 CITY OF RIVERSIDE, CALIFORNIA

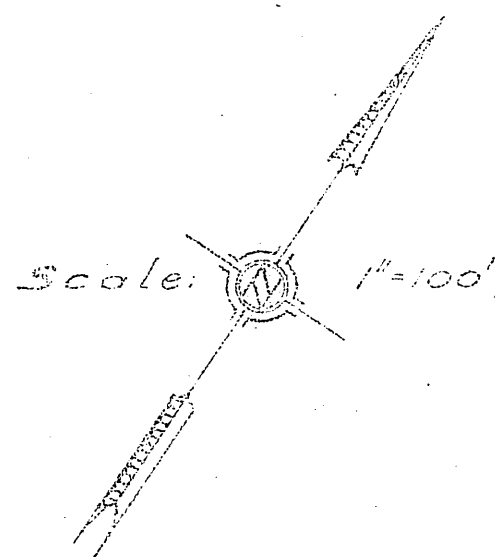
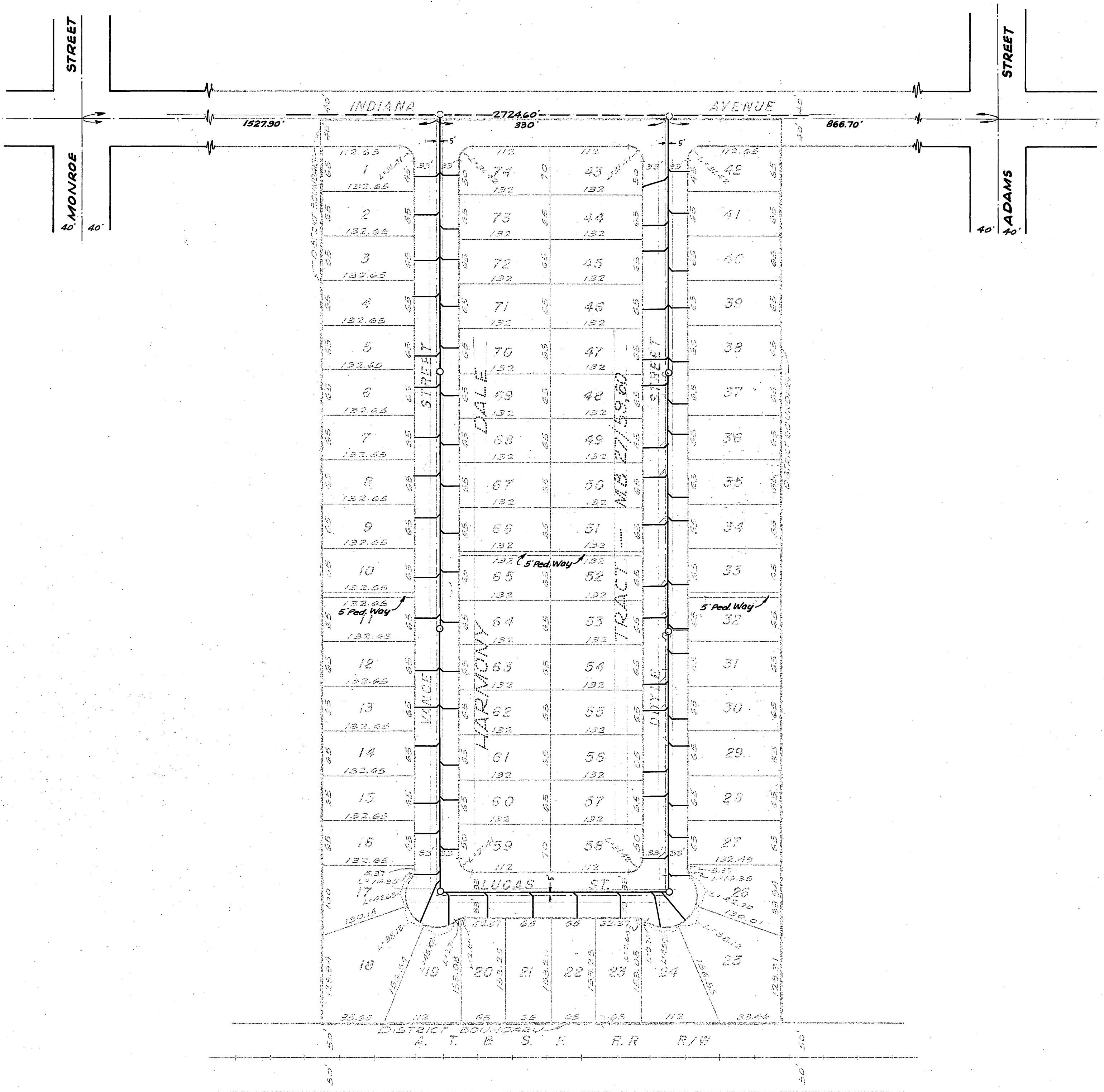


DIAGRAM  
 OF THE PROPERTY AFFECTED OR BENEFITED  
 BY THE WORK IN THE  
 VANCE - DOYLE  
 SANITARY SEWER DISTRICT

APPROVED	BY THE BOARD OF ENGINEERS
DATE	STATEMENT OF WORK
VANCE - DOYLE SANITARY SEWER DISTRICT	
ENGINEER <i>Ernest N. Webb</i> DATE <i>1-22-62</i>	SURVEYOR <i>J. M. ...</i> DATE <i>1-22-62</i>
S-283B	
1-22-62	

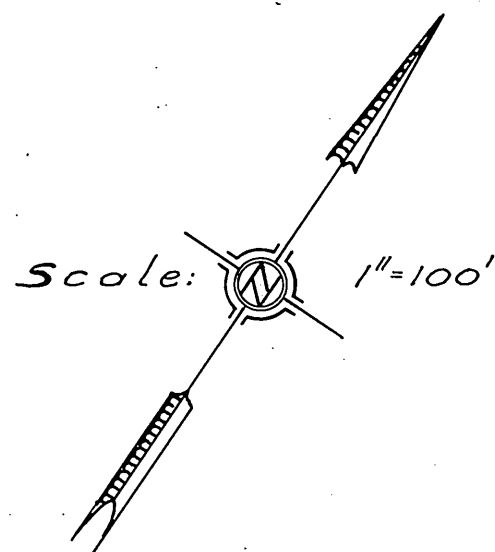
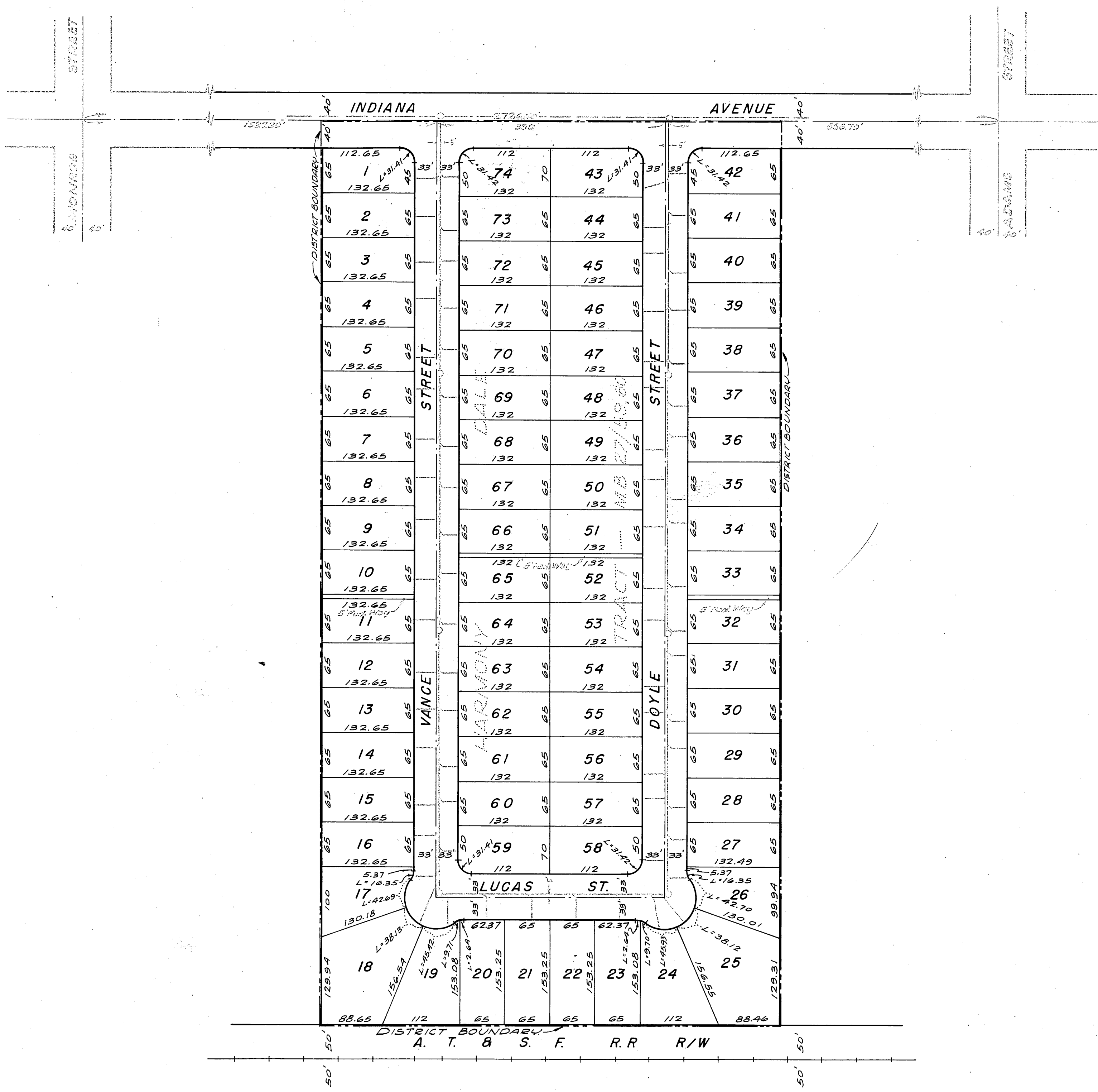


DIAGRAM  
OF THE PROPERTY AFFECTED OR BENEFITED  
BY THE WORK IN THE  
VANCE - DOYLE  
SANITARY SEWER DISTRICT

REVISIONS			CITY OF RIVERSIDE CALIFORNIA DEPARTMENT OF PUBLIC WORKS	
MARK	DATE	DESCRIPTION		
			<b>VANCE - DOYLE SANITARY SEWER DISTRICT</b>	
DESIGNED BY		CHECKED BY	APPROVED BY	
DRAWN BY H.L.M. dt		R.E. 9876	 DIRECTOR OF PUBLIC WORKS	
RECOMMENDED BY		ASSISTANT CITY ENGINEER	DATE 1-22-62	<b>S-283B</b> SHEET 2 OF 2