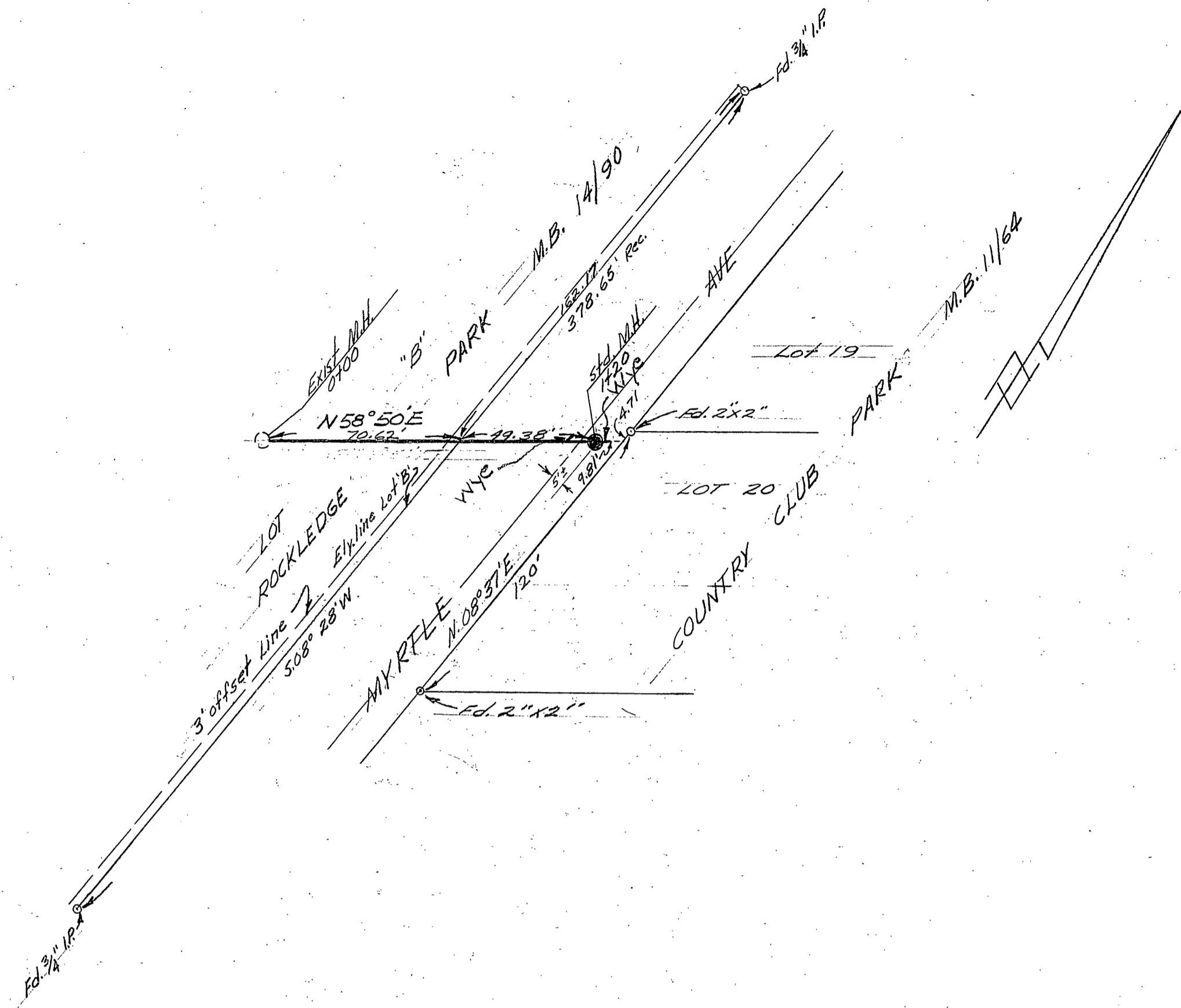


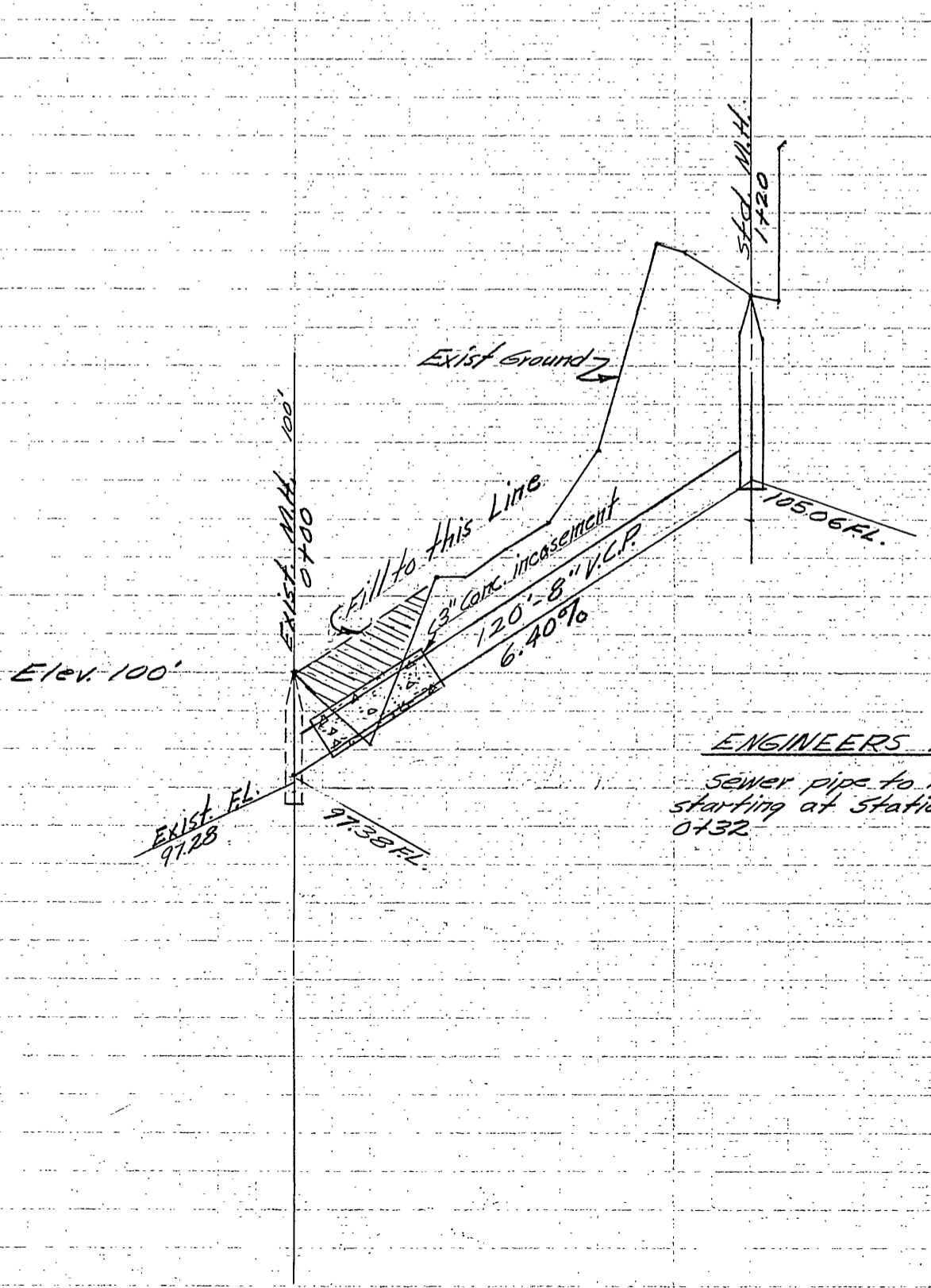
PROPERTY OF
CITY OF RIVERSIDE
DEPT. OF PUBLIC WORKS
ENGINEERING DIVISION

PROPERTY OF
CITY OF RIVERSIDE
DEPT. OF PUBLIC WORKS
ENGINEERING DIVISION



SHEET 1 OF 1 SHEET

BENCH MARK
T.B.M. - N.Y. Rim Exist. M.H. at station 0+00
Assumed Elevation 100'



ENGINEERS NOTE
Sewer pipe to have a 3" concrete incasement
starting at station 0+25 and running to station
0+32.

PLAN & PROFILE
SEWER CONNECTION FOR LOT 19 COUNTRY CLUB PARK
TED WOOLEY

APRIL 1956 J.F. DAVIDSON C.E.

SCALE: Hor. 1" = 40'
Vert. 1" = 4'

PROPERTY OF
CITY OF RIVERSIDE
DEPT. OF PUBLIC WORKS
ENGINEERING DIVISION

PROPERTY OF
CITY OF RIVERSIDE
DEPT. OF PUBLIC WORKS
ENGINEERING DIVISION

Approved: *[Signature]* Date 4-18-56
Director of Public Works