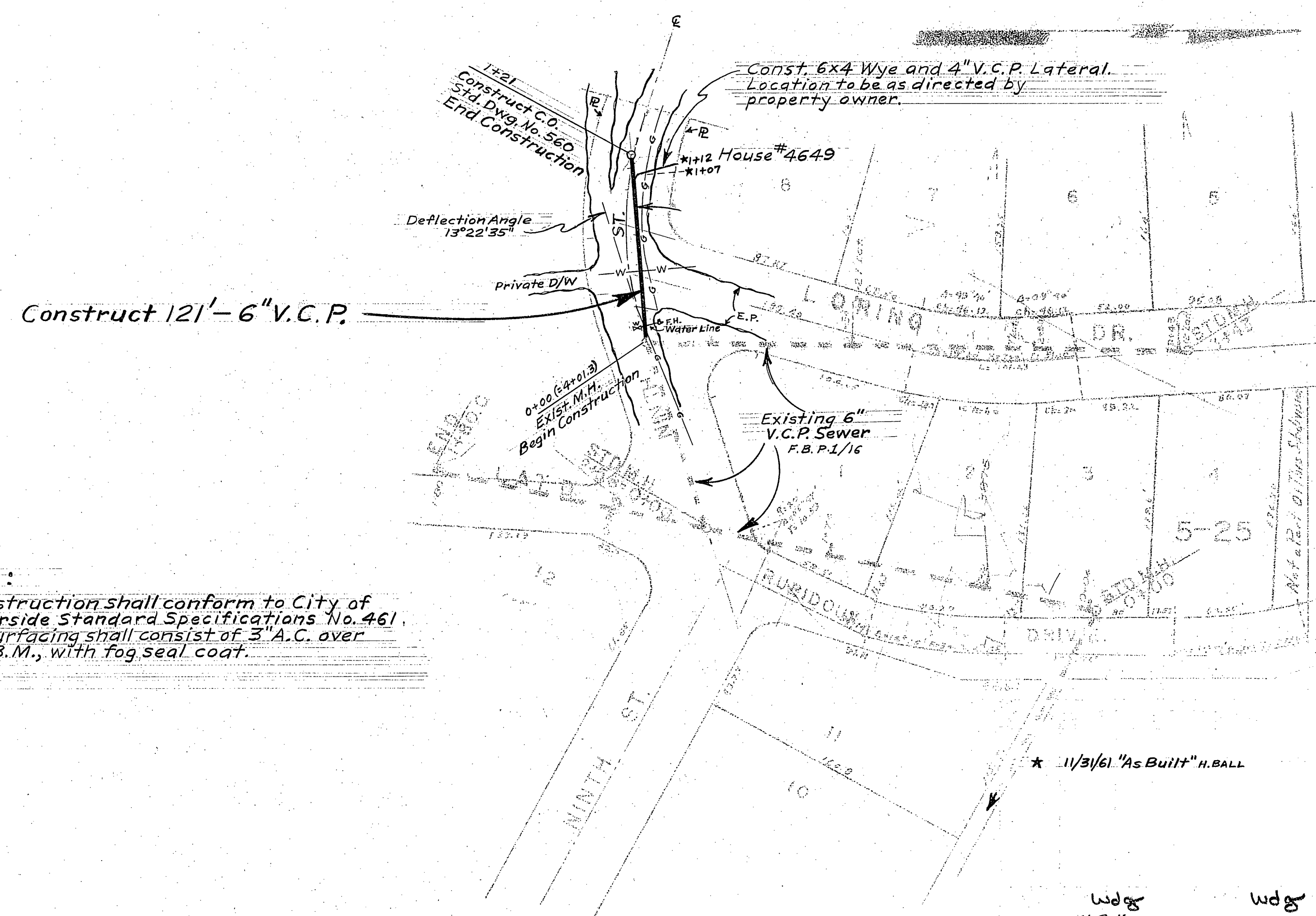


Scale:
 1" = 60' Hor.
 1" = 6' Vert.

F.B. P-1/13, 14



NOTES:

- 1- Construction shall conform to City of Riverside Standard Specifications No. 461.
- 2- Resurfacing shall consist of 3" A.C. over 6" I.B.M., with fog seal coat.

9th ST.
 SEWER EXTENSION
 LORING DR.
 W'LY 121'

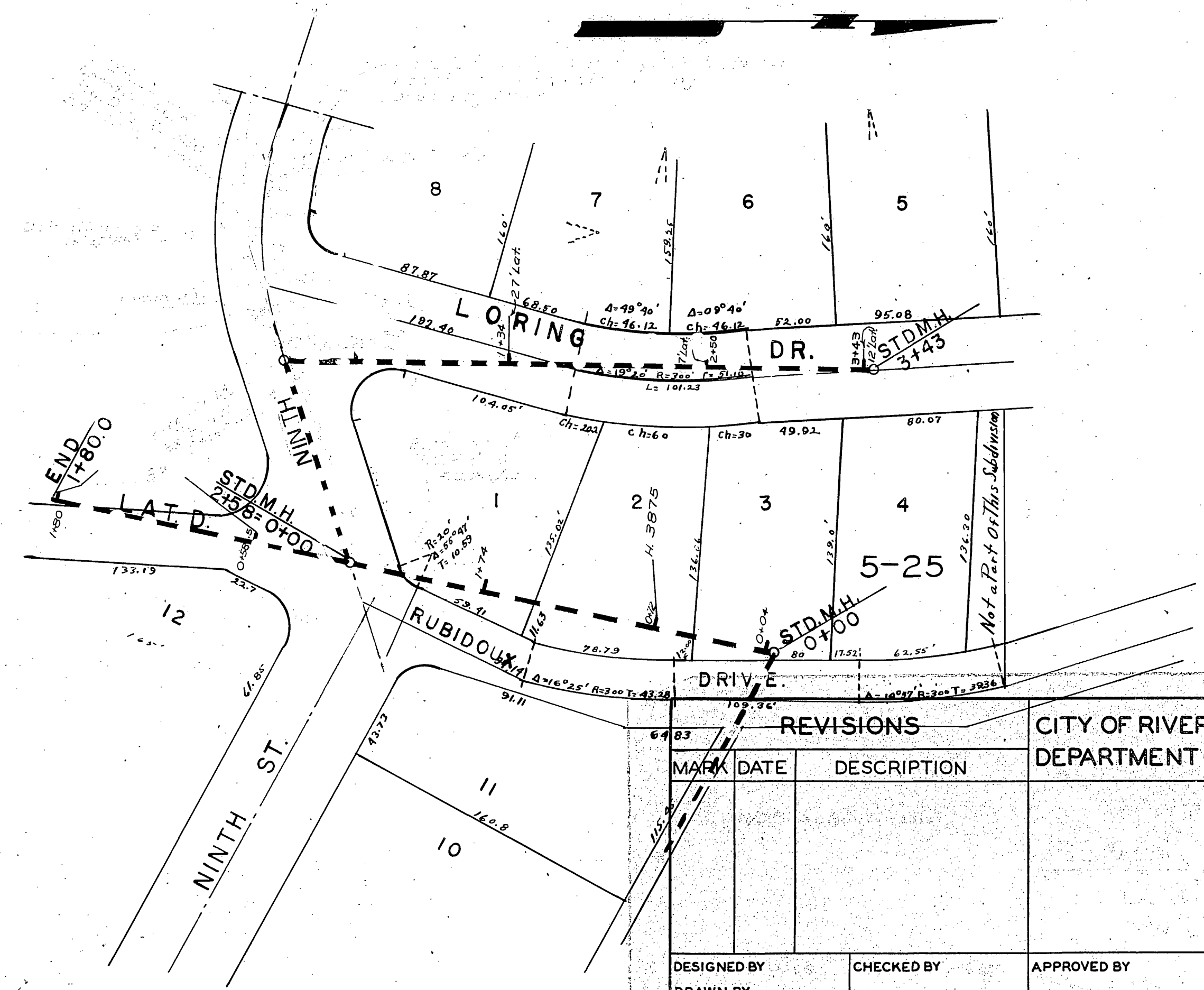
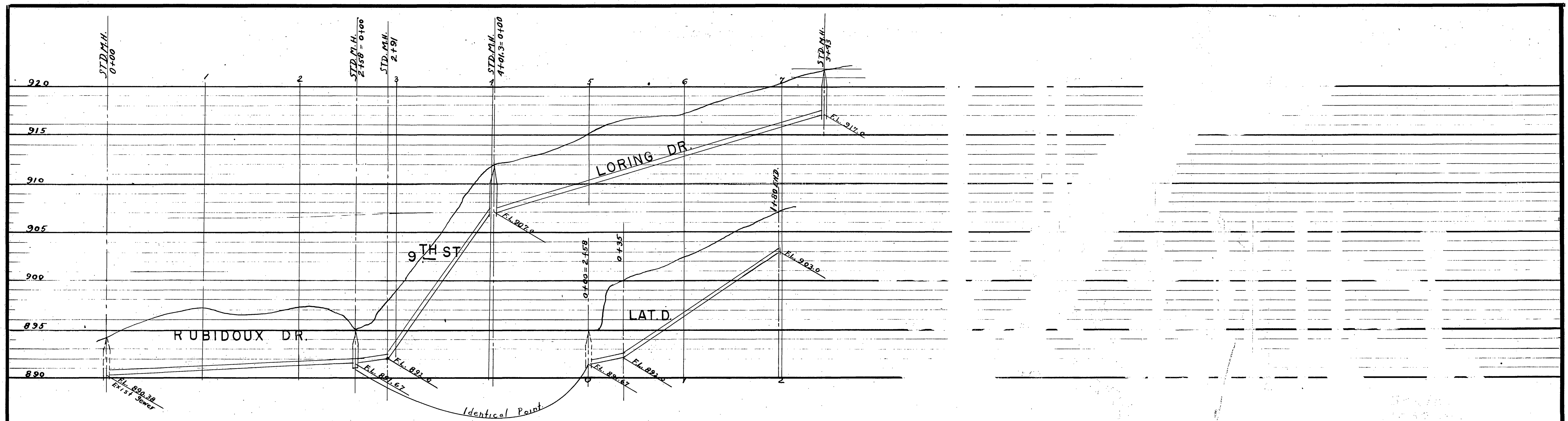
wdg
 H. Ball

wdg
 A.R. Sheal

10/20/61

S-297

1 of 1



REVISIONS			CITY OF RIVERSIDE CALIFORNIA DEPARTMENT OF PUBLIC WORKS
MARK	DATE	DESCRIPTION	

DESIGNED BY	CHECKED BY	APPROVED BY
DRAWN BY		DIRECTOR OF PUBLIC WORKS
RECOMMENDED BY	ASSISTANT CITY ENGINEER	DATE

S-297
SHEET | OF |