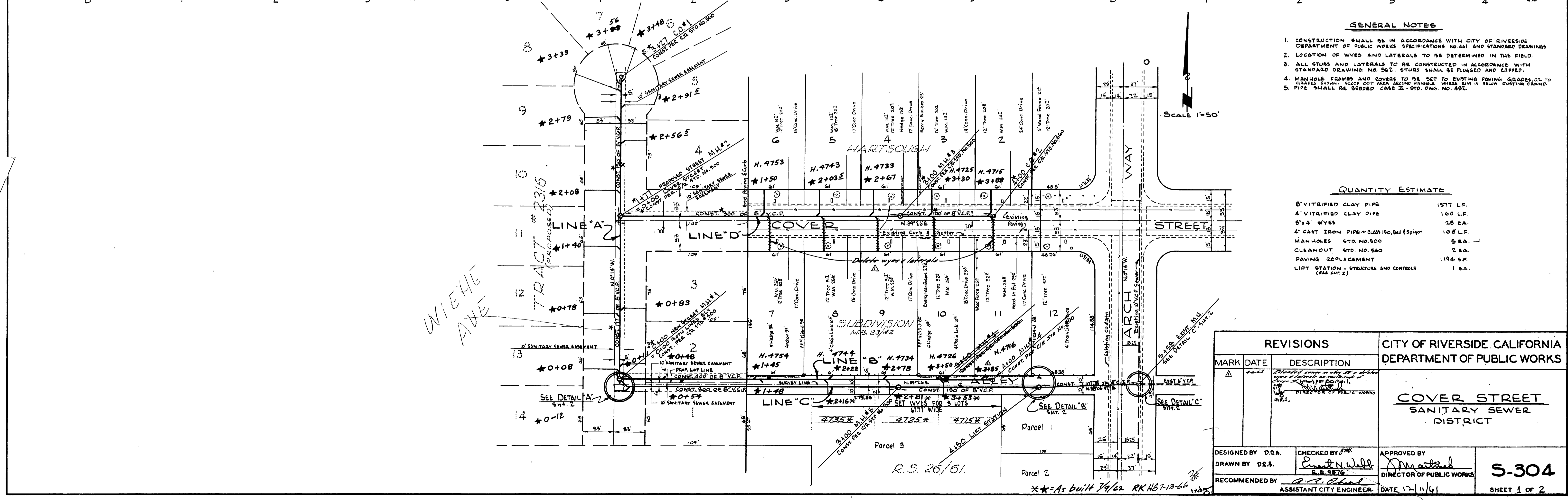


PROFILE	
DATE	BY
4/27/61	O. E. S.
DATE	BY
11/18/61	O. E. S.
DATE	BY
11/18/61	O. E. S.



- GENERAL NOTES**
- CONSTRUCTION SHALL BE IN ACCORDANCE WITH CITY OF RIVERSIDE DEPARTMENT OF PUBLIC WORKS SPECIFICATIONS NO. 461 AND STANDARD DRAWINGS.
 - LOCATION OF WYES AND LATERALS TO BE DETERMINED IN THE FIELD.
 - ALL STUMS AND LATERALS TO BE CONSTRUCTED IN ACCORDANCE WITH STANDARD DRAWING NO. 562. STUMS SHALL BE PLUGGED AND CAPPED.
 - MANHOLE FRAMES AND COVERS TO BE SET TO EXISTING PAVING GRADES OR TO GRADES SHOWN. SCOP OUT OVER BOUND MANHOLES. WARED 2" IN BELOW EXISTING GROUND.
 - PIPE SHALL BE BEDDED CASE II - STD. DWG. NO. 487.

QUANTITY ESTIMATE

8" VITRIFIED CLAY PIPE	1577 L.F.
4" VITRIFIED CLAY PIPE	160 L.F.
8" x 4" WYES	18 EA.
4" CAST IRON PIPE - CLASS 150, Bell #5 pipe	108 L.F.
MANHOLES STD. NO. 500	5 EA.
CLEANOUT STD. NO. 560	2 EA.
PAVING REPLACEMENT	1194 S.F.
LIFT STATION - STRUCTURE AND CONTROLS (SEE DET. 2)	1 EA.

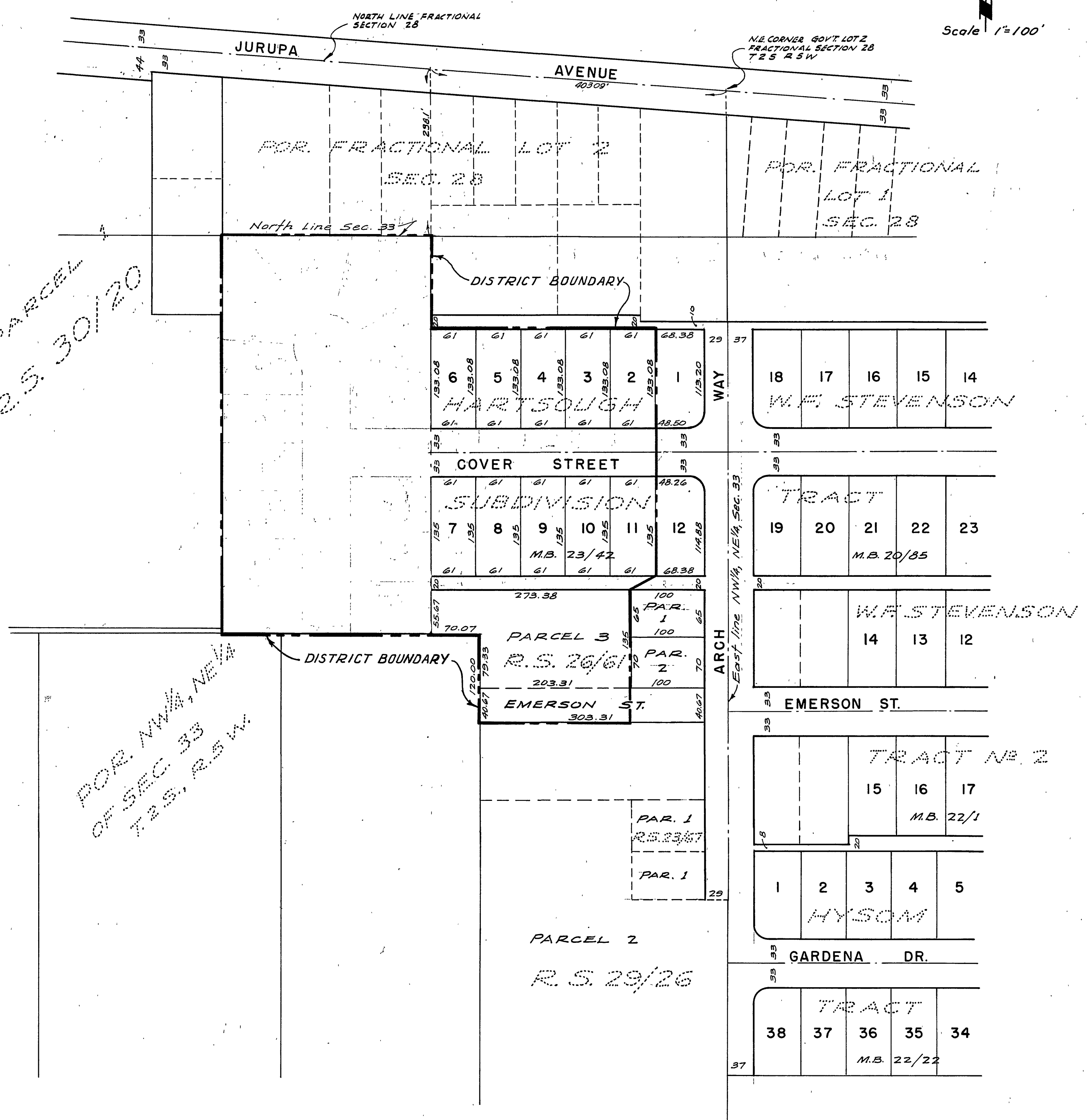
REVISIONS		CITY OF RIVERSIDE, CALIFORNIA DEPARTMENT OF PUBLIC WORKS
MARK	DATE	
Δ	4-27-61	Estimated sewer in utility 28' x 36" double pipe 12' deep to be installed in place of existing 12" x 18" double pipe 12' deep. (See Detail A-2) by O.P.R. & R.E. Standard. Director of Public Works.
DESIGNED BY D.O.B.		APPROVED BY <i>[Signature]</i> DIRECTOR OF PUBLIC WORKS
DRAWN BY O.E.S.		
RECOMMENDED BY <i>[Signature]</i> ASSISTANT CITY ENGINEER		DATE 12/11/61
		S-304
		SHEET 1 OF 2

PLAN	
DATE	BY
11/18/61	O. E. S.
DATE	BY
11/18/61	O. E. S.
DATE	BY
11/18/61	O. E. S.

Scale 1"=100'

PARCEL
R.S. 30/20

FOR NW 1/4, NE 1/4
OF SEC. 33
T.2 S., R.5 W.



REVISIONS			CITY OF RIVERSIDE CALIFORNIA DEPARTMENT OF PUBLIC WORKS	
MARK	DATE	DESCRIPTION		
			COVER STREET SANITARY SEWER DISTRICT	
DESIGNED BY <i>h.l.m.</i>		CHECKED BY	APPROVED BY	
DRAWN BY <i>h.l.m.</i>		<i>R.E. 9876</i>	DIRECTOR OF PUBLIC WORKS	
RECOMMENDED BY		ASSISTANT CITY ENGINEER	DATE	S-304- SHEET OF