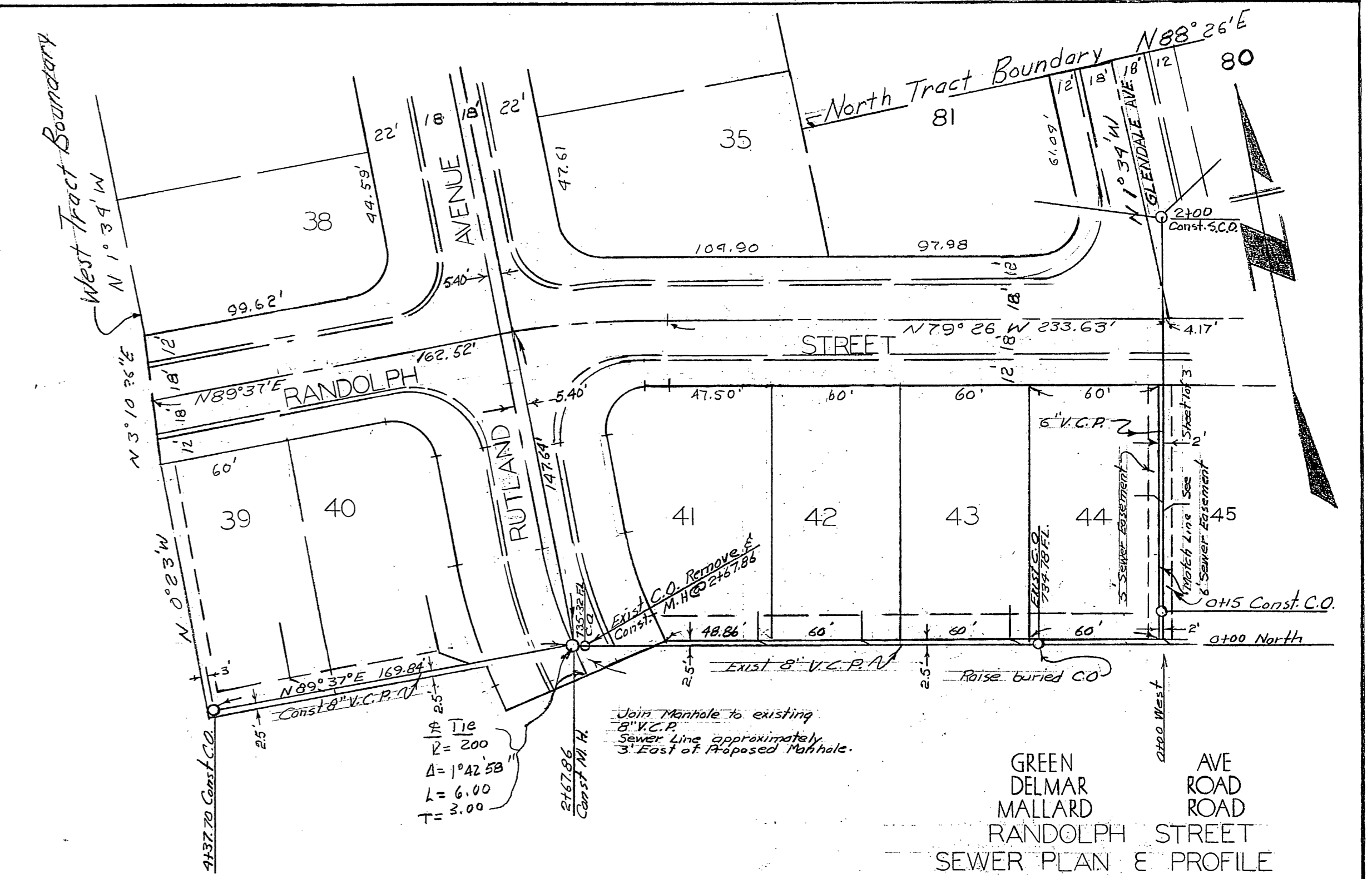
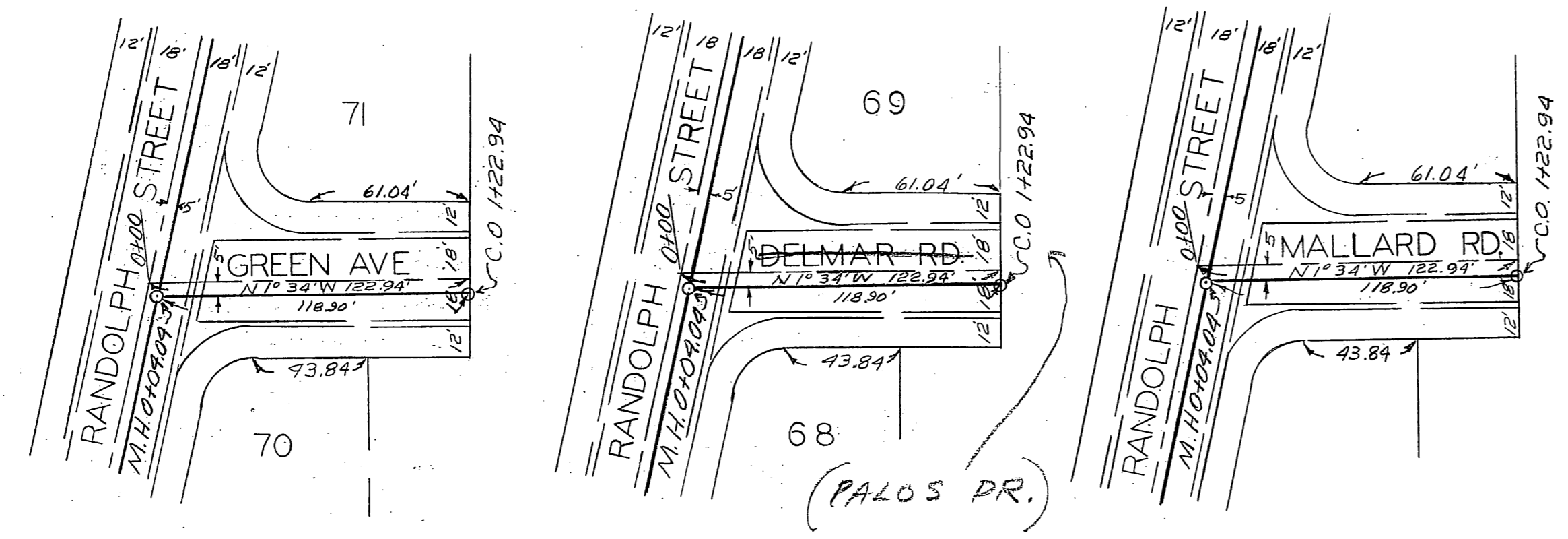


MISSING SHEET

PLAN
 SURVAYED
 PLOTTED
 ALIGNMENT CHECKED
 RT. OF WAY CHECKED
 NOTE BOOK NO. 67

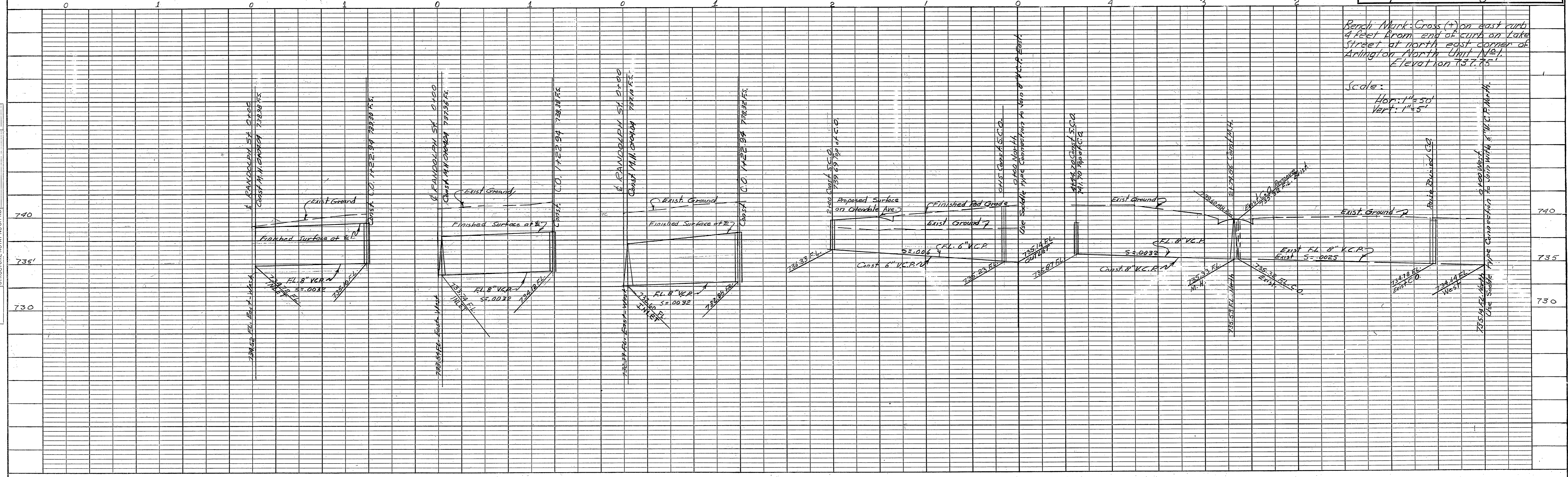
PROFILE
 SURVAYED
 PLOTTED
 GRADES CHECKED
 STRUCTURE NOTATIONS OK'D
 NOTE BOOK NO. 67



GREEN
 DELMAR
 MALLARD
 RANDOLPH STREET
 SEWER PLAN & PROFILE

RIVERSIDE ENGINEERING CO.
 RIVERSIDE, CALIFORNIA
 FOR DOWNS DEVELOPMENT CO.
 GREENACRES - DOWNS UNIT 3
 DRAWN BY W.C.H. CHECKED BY SCALE 1/4"=50'
 DATE Mar 27, 56 REVISED 4-30-57
 By George O. Crowley CIVIL ENGINEER
 JOB NO. 1872 SHEET 2 OF 3

Approved 5-14-57
 RIVERSIDE COUNTY HEALTH DEPARTMENT
 Riverside, California
 By Miss A. Williams R.S.

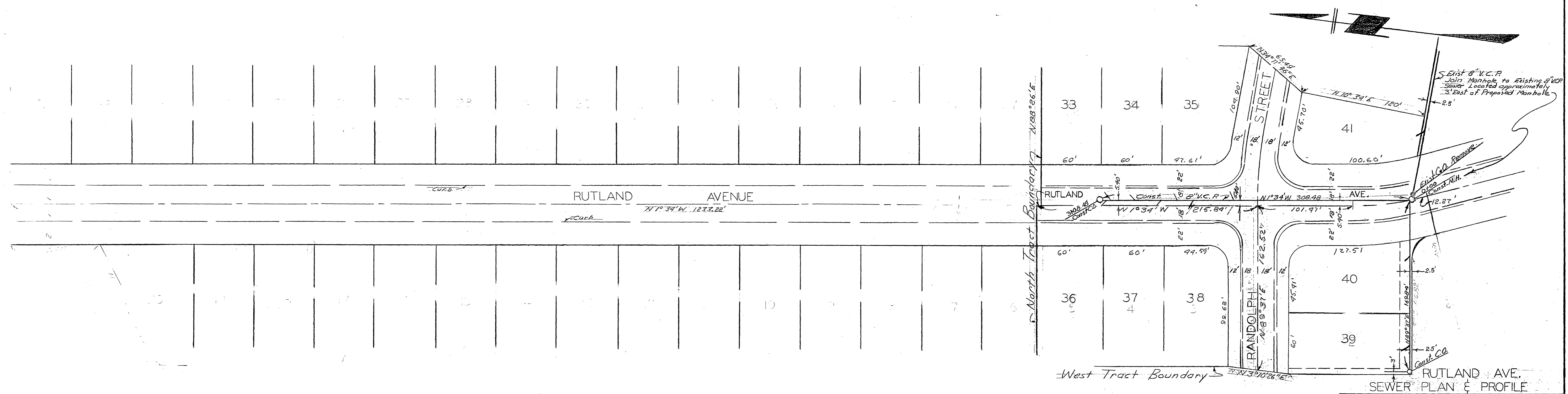


Bench Mark: Cross (+) on east curb
 4 feet from end of curb on Lake
 Street at north east corner of
 Arlington North Unit #21.
 Elevation 737.75'

Scale:
 Hor.: 1"=50'
 Vert.: 1"=5'

PLAN SURVEYED BY DATE
 PLOTTED BY
 NOTE BOOK NO. ALIGNMENT CHECKED BY
 RT. OF WAY DESIGNER

PROFILE SURVEYED BY DATE
 PLOTTED BY
 NOTE BOOK NO. B.M.'S NOTED BY
 STRUCTURE NOTATIONS CHFD.



RIVERSIDE ENGINEERING CO.
 RIVERSIDE, CALIFORNIA
 FOR DOWNS DEVELOPMENT COMPANY
 GREENACRES - DOWNS - UNIT 3
 DRAWN BY S.M. CHECKED BY SCALE 1"=50'
 DATE Mar. 27, 56 REVISED 4-30-57 B.M.
 CIVIL ENGINEER #1186
 JOB NO. 1872 SHEET 3 OF 3

Approved 5-14-57
 RIVERSIDE COUNTY HEALTH DEPARTMENT
 Riverside, California
 By: *R.S. Hawthorn* R.S.

