

SIERRA FOOTHILLS UNIT 5 FILED

BEING A SUBDIVISION OF A PORTION OF LOTS 19, 20, & V
OF ALCAZAR TRACT AS RECORDED IN BOOK 16, PAGE 31 TO 34
RECORDS OF RIVERSIDE COUNTY, CALIFORNIA.

W. R. MAXWELL, SURVEYOR

SEP 5 1957
Jack A. Ryss
County Clerk
Riverside County
AUGUST 1957

SCALE 1"=60'

Owner's Certificate

We hereby certify that we are the owners of or have some right, title or interest in the land included within the subdivision shown herein, that we are the only persons whose consent is necessary to pass clear title to said land and we hereby consent to the making and recordation of said map and subdivision as shown within the colored border line, and we hereby offer for dedication for public use for street purposes Lots A to E inclusive and for the construction and maintenance of all public utilities, the six foot easements and easements shown by dashed lines and designed as "PUB" easements.

DEVELOPMENT CORPORATION OF RIVERSIDE a California Corporation
W. R. Maxwell, Vice President
RIVERSIDE TITLE COMPANY, a corporation in its Trustee
James H. Brown, Vice President

Corporate Acknowledgment

STATE OF CALIFORNIA }
COUNTY OF RIVERSIDE }
On this 28th day of August 1957 before me, Donald A. Brown, a Notary Public in and for said county and State, personally appeared W. R. Maxwell, known to me to be the vice president and James H. Brown, known to me to be the secretary of the corporation that executed the within instrument on behalf of the corporation therein named and acknowledged to me that such corporation executed the same and acknowledged to me that such corporation executed the within instrument pursuant to its by-laws or a resolution of its board of directors.
WITNESS MY HAND AND OFFICIAL SEAL
Donald A. Brown, My Commission Expires
Notary Public in and for said County and State

Corporate Acknowledgment

STATE OF CALIFORNIA }
COUNTY OF RIVERSIDE }
On this 28th day of August 1957 before me, Donald A. Brown, a Notary Public in and for said county and State, personally appeared W. R. Maxwell, known to me to be the vice president, and James H. Brown, known to me to be the secretary of the corporation that executed the within instrument on behalf of the corporation therein named and acknowledged to me that such corporation executed the same and acknowledged to me that such corporation executed the within instrument pursuant to its by-laws or a resolution of its board of directors.
WITNESS MY HAND AND OFFICIAL SEAL
Donald A. Brown, My Commission Expires
Notary Public in and for said County and State

County Surveyor's Certificate

I hereby certify that I have examined the within annexed map, that the subdivision shown thereon is substantially the same as it appeared on the tentative map and any approved alterations thereof; that all provisions of Chapter 143 (Subdivision Map Act) Statutes of California 1943, and Riverside County Ordinance No. 336 have been complied with and I am satisfied that this map is substantially correct.
Dated this 28th day of August 1957
A. C. Keith, County Surveyor
C. F. Worsley, Deputy

Land Surveyor's Certificate

I hereby certify that I am a licensed land surveyor of the State of California and that this map consisting of one sheet correctly represents a survey made by me in July 1957; that all monuments shown hereon actually exist and their positions are correctly shown.
W. R. Maxwell
Dated _____
Licensed Land Surveyor No. 2188

Tax Bond

I hereby certify that a bond in the sum of \$1000 has been obtained and filed with the Board of Supervisors of the County of Riverside State of California conditioned upon the payment of all taxes, State, County, Municipal or Local, and all special assessments collected as taxes, which at the time of the filing of the annexed map with the County Recorder are a lien against said property but not yet payable and said bond has been approved by said Board of Supervisors.

Dated this 3rd day of Sept. 1957
Gordon A. Pequegnat
County Clerk and Ex-Officio
Clerk of the Board of Supervisors
By Thomas M. Thomas, Deputy

Board of Supervisors' Certificate

The County of Riverside, California, do hereby certify that the within map and annexed tax bond have been approved and filed with the County Recorder on this 3rd day of Sept. 1957.
County of Riverside, State of California
By Donald A. Brown
Chairman of Board of Supervisors

Attest

Gordon A. Pequegnat
County Clerk and Ex-Officio
Clerk of the Board of Supervisors
By Thomas M. Thomas, Deputy

County Planning Commission's Certificate

Approved by the Riverside County Planning Commission in accordance with requirements of law in duly authorized meeting held the 23 day of August 1957.
Harold J. Jensen, Secretary
Riverside County Planning Commission

County Tax Collector's Certificate

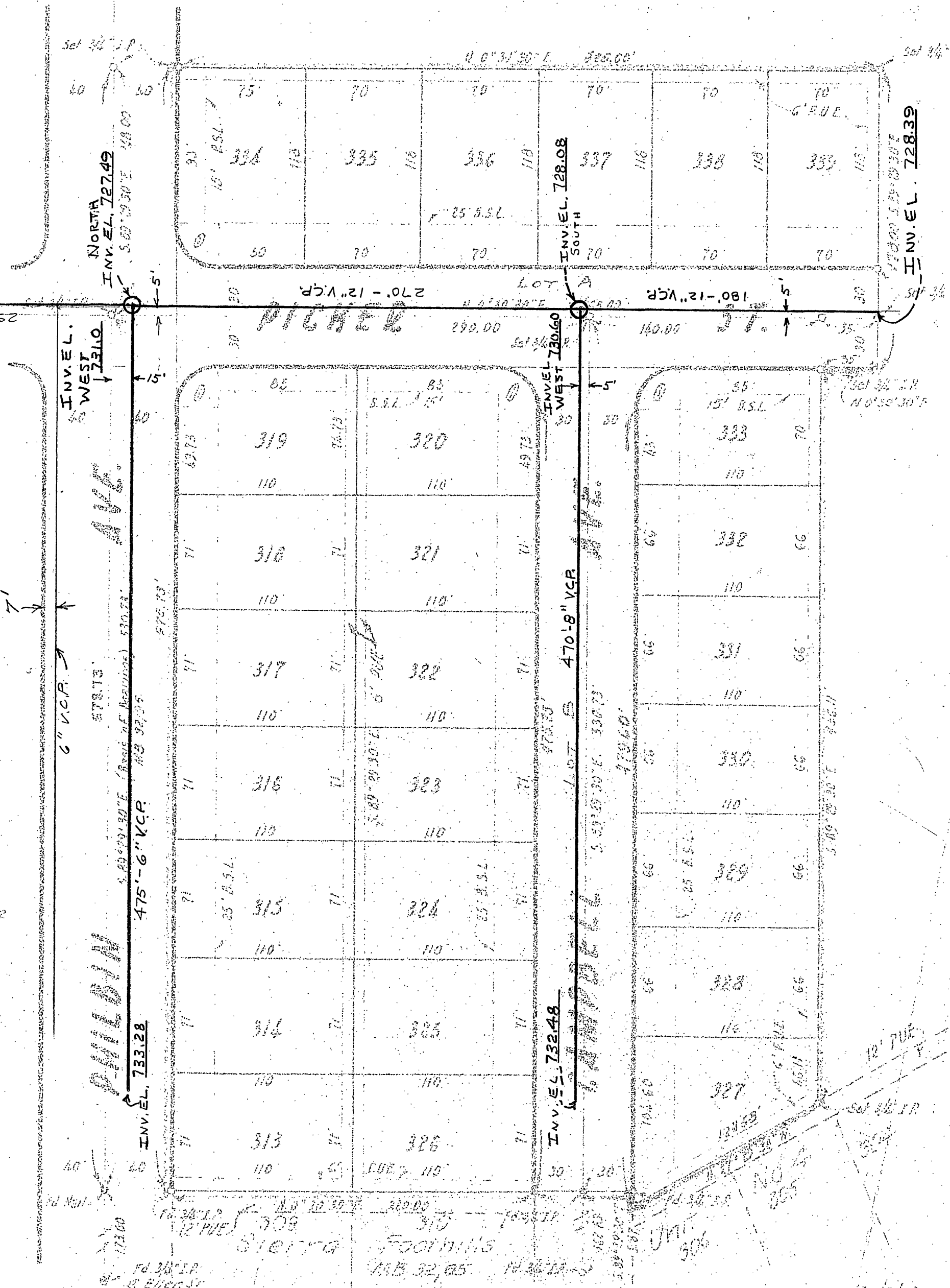
I hereby certify that according to the records of this office as of this date, there are no liens against the property as shown on the within map for unpaid State, County or Local Taxes or special assessments collected as taxes except taxes or special assessments now a lien but not yet payable which are estimated to be \$1000.
Dated this 28th day of August 1957
W. H. Brown, County Tax Collector
By W. R. Maxwell, Deputy

Notes:

- 1) Basis of bearing is N. Philbin Avenue (S 33° 29' 30" E) as shown on Sierra Foothills Unit 4 MS 32 Page 95 & Camp Area Subdiv #1 MS 22 Page 22
- 2) Indicates Monument found
- 3) Indicates Monument set (3/4" iron pipe) tagged LS 2766
- 4) 2" x 2" Redwood Stakes painted white and stamped LS 2766 set at all lot corners.
- 5) B.S.L. indicates Building Set-back Line
- 6) P.U.E. indicates Public Utility Easements

SEWER MAP

Curve Data	Radius	Delta	Tang.	Length
1	25'	30°	25'	39.27'



SIERRA FOOTHILLS UNIT 5 FILED

BEING A SUBDIVISION OF A PORTION OF LOTS 19, 20, & V OF ALCAZAR TRACT AS RECORDED IN BOOK 16, PAGE 31 TO 34 RECORDS OF RIVERSIDE COUNTY, CALIFORNIA.

W. R. MAXWELL, SURVEYOR

SEP 5 1957
Jack A. Ross
o.a. rust
Filed at 3:31 PM
By County Clerk
AUGUST 1957



Owner's Certificate

We hereby certify that we are the owners of or have some right, title or interest in the land included within the subdivision shown hereon, that we are the only persons whose consent is necessary to pass clear title to said land and we hereby consent to the making and recordation of said map and subdivision as shown within the colored border line, and we hereby offer for dedication for public use for street purposes Lots A to B inclusive and for the construction and maintenance of all public utilities, the six foot ~~building set~~ easements shown by dashed lines and designed as "6' PUE"

DEVELOPMENT CORPORATION OF RIVERSIDE, California Corporation
O. P. Ladd Vice President
Armand R. Bruno Vice President
Chester P. McKenzie Secretary

Corporate Acknowledgment

STATE OF CALIFORNIA }
COUNTY OF RIVERSIDE }
On this 28th day of August 1957 before me Doratha De Neugh a Notary Public in and for said County and State, personally appeared O. P. Ladd known to me to be the vice president and L. E. Coffey known to me to be the secretary of the corporation that executed the within instrument on behalf of the corporation therein named and acknowledged to me that such corporation executed the same and acknowledged to me that such corporation executed the within instrument pursuant to its by-laws or a resolution of its board of directors.
WITNESS MY HAND AND OFFICIAL SEAL
Doratha De Neugh My Commission Expires
Notary Public in and for said County and State
1957-8

Corporate Acknowledgment

STATE OF CALIFORNIA }
COUNTY OF RIVERSIDE }
On this 28th day of August 1957 before me Doratha De Neugh a Notary Public in and for said County and State personally appeared Armand R. Bruno known to me to be the vice president, and Chester P. McKenzie known to me to be the secretary of the corporation that executed the within instrument on behalf of the corporation therein named and acknowledged to me that such corporation executed the same and acknowledged to me that such corporation executed the within instrument pursuant to its by-laws or a resolution of its board of directors.
WITNESS MY HAND AND OFFICIAL SEAL
Doratha De Neugh My Commission Expires
Notary Public in and for said County and State
1957-8

County Surveyor's Certificate

I hereby certify that I have examined the within annexed map, that the subdivision shown thereon is substantially the same as it appeared on the tentative map and any approved alterations thereof; that all provisions of Chapter 12B (Subdivision Map Act) Statutes of California 1943, and Riverside County Ordinance No. 336 have been complied with and I am satisfied that this map is technically correct.
Dated this 28th day of August 1957
A. C. Keith County Surveyor
By C. T. Worley Deputy

Land Surveyor's Certificate

I hereby certify that I am a licensed land surveyor of the State of California and that this map consisting of one sheet correctly represents a survey made by me in July 1957; that all monuments shown hereon actually exist and their positions are correctly shown.
Aug 27, 1957
Dated W. R. Maxwell
Licensed Land Surveyor No. 2788

Tax Bond

I hereby certify that a bond in the sum of \$1000 has been executed and filed with the Board of Supervisors of the County of Riverside State of California conditioned upon the payment of all taxes, State, County, Municipal or Local, and all special assessments collected as taxes, which at the time of the filing of the annexed map with the County Recorder are a lien against said property but not yet payable and said bond has been approved by said Board of Supervisors.
Dated this 3rd day of Sept. 1957
Gordon A. Pequegnat
County Clerk and Ex-Officio
Clerk of the Board of Supervisors
By Marian Mann Deputy

Board of Supervisor's Certificate

The County of Riverside, State of California, by and through its duly authorized officers hereby approves said final map and accepts the foregoing dedications.
Dated this 3rd day of Sept. 1957
County of Riverside State of California
By Gordon A. Pequegnat
Chairman of Board of Supervisors

Attest

Gordon A. Pequegnat
County Clerk and Ex-Officio
Clerk of the Board of Supervisors
By Marian Mann Deputy

County Planning Commission's Certificate

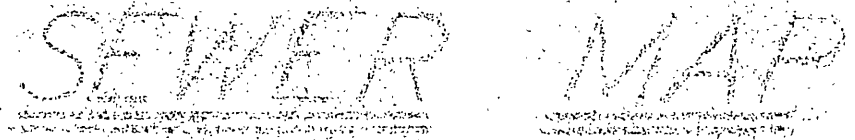
Approved by the Riverside County Planning Commission in accordance with requirements of law in duly authorized meeting held the 28 day of August 1957.
Harold J. Evenson Secretary
Riverside County Planning Commission

County Tax Collector's Certificate

I hereby certify that according to the records of this office as of this date, there are no liens against the property as shown on the within map for unpaid State, County, or Local Taxes or special assessments collected as taxes except taxes or special assessments now a lien but not yet payable which are estimated to be \$1000.
Dated this 28th day of August 1957
Y. M. H. [unclear] County Tax Collector
By [unclear] Deputy

Notes:

- Basis of bearing is ϕ Philbin Avenue (S 89° 29' 30" E) as shown on Sierra Foothills Unit 4 MB 32 Page 95 & Camp Anza Subd'n #1 MB 22 Pgs 61-62
- Indicates Monument found
- Indicates Monument set (3/4" iron pipe) tagged LS 2788
- 2' x 2" Redwood Stakes painted white and stamped "LS 2788" set at all lot corners.
- BSL indicates Building Set-back Line
- PUE indicates Public Utility Easements



CURVE DATA

Radius	Delta	Tang.	Length
25'	90°	25'	39.27'

