

BENCH MARK: Spike in P.P. #10408J West side of SHEFFIELD AVENUE and N.E. Corner of LOT #21. Elev. = 1133.70 (C.F.B. 438/22).

GENERAL NOTES

1. Construction shall be in accordance with the City of Riverside, Department of Public Works Specifications No. 481 and Standard Drawings.
2. Location of Wyes and Laterals to be determined in field.
3. All Laterals to be constructed in accordance with Standard Drawing No. 562.
4. Pipe shall be bedded Case 11, Standard Drawing No. 452.
5. Prior to the construction of sewer, contractor is to excavate and contact Engineer for verification of elevation of existing sewer lines on Argyle Way and Sheffield Avenue. This elevation to be determined before cut sheets are issued for this project.
6. Maximum vertical spacing of steps in manhole to be 12".

QUANTITY ESTIMATE

8" Vitrified Clay Pipe	1857	L.F.
6" Vitrified Clay Pipe	261	L.F.
8" x 4" Wyes	27	EA.
Manholes - Std. No. 500	7	EA.
Manholes - Std. No. 560	2	EA.
Manhole Replacement	280	S.F.

REVISION	
MARK	DESCRIPTION
★	4-25-62 "As Built" H. Ball

ALBERT A. WEBB ASSOCIATES
 CIVIL ENGINEERS - RIVERSIDE, CALIFORNIA
 APPROVED: *Ernest N. Webb* DATE 12/20/61
 S.L. 9876

CITY OF RIVERSIDE, CALIFORNIA
 DEPARTMENT OF PUBLIC WORKS

SEWER PLAN AND PROFILE

LONGMONT STREET
 AND
 SHEFFIELD AVENUE

TRACT No. 2264

APPROVED BY: *[Signature]*
 DIRECTOR OF PUBLIC WORKS

DATE Feb. 14, 1962

NO. **S-319**

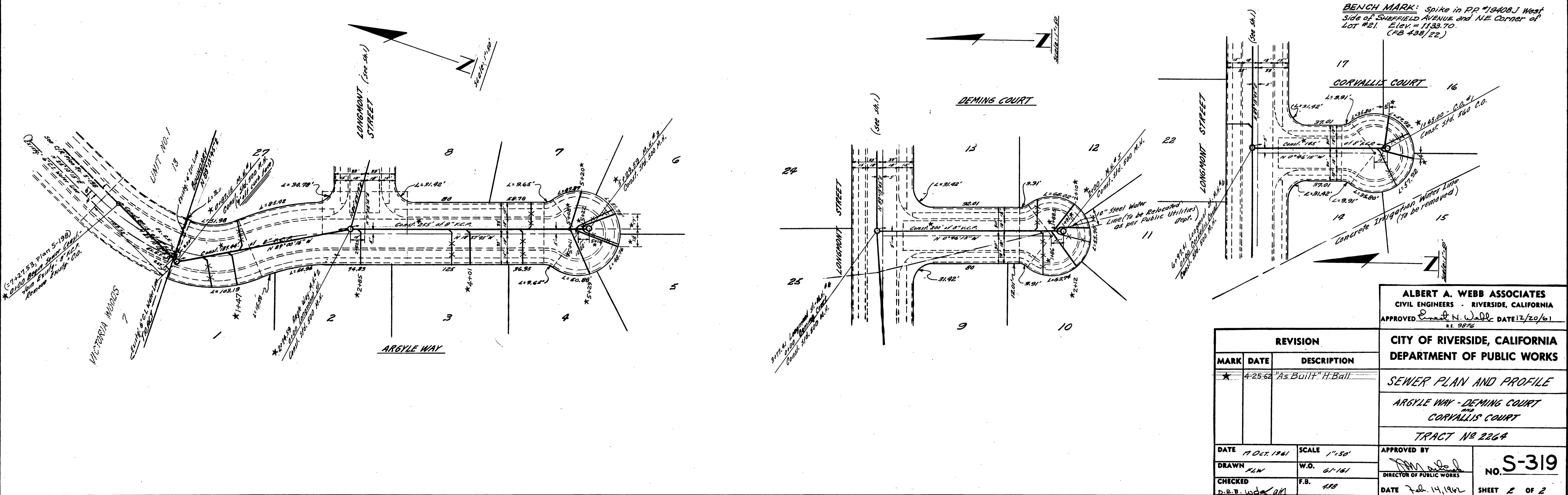
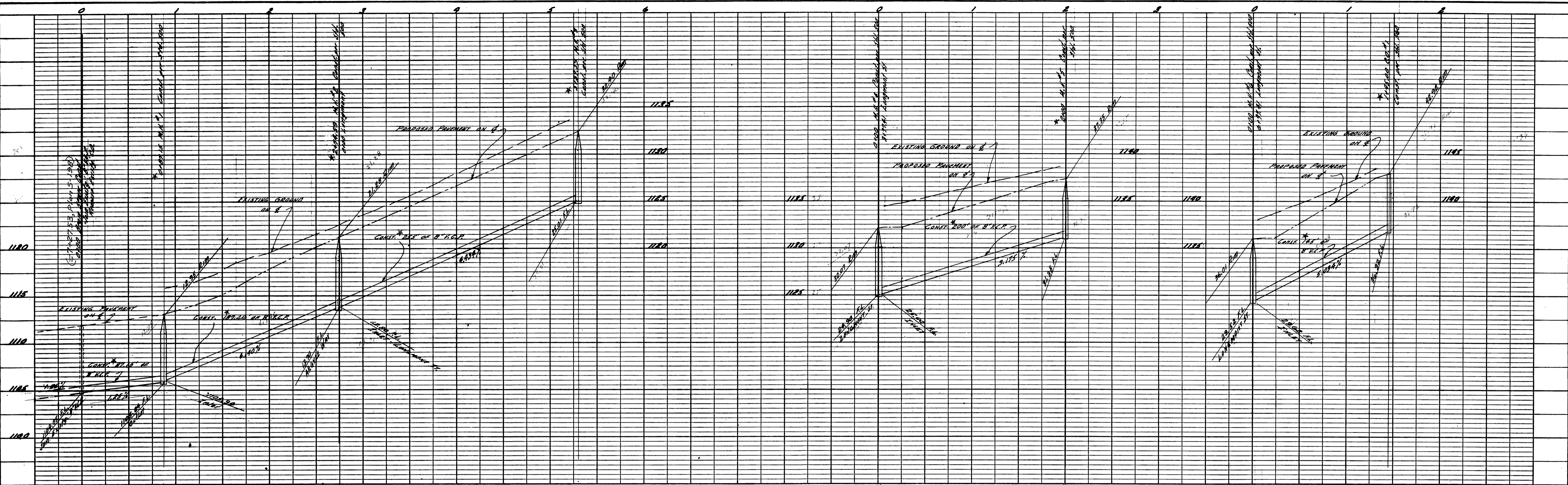
SHEET 1 OF 2

PROFILE

DATE	
BY	
CHECKED	
NOTED	
NO.	

PLAN

DATE	
BY	
CHECKED	
NOTED	
NO.	



BENCH MARK: Spike in PP #1940B West side of SHEPHERD AVENUE and N.E. Corner of LOT #21. Elev. = 1183.70 (FB 438/22)

PROFILE	DATE
BY	
NOTED	
BY	
DATE	

PLAN	DATE
BY	
NOTED	
BY	
DATE	

REVISION		
MARK	DATE	DESCRIPTION
*	4-25-62	"As Built" H. Ball

DATE	19 Oct. 1961	SCALE	1"=50'
DRAWN	FLW	W.O.	61-161
CHECKED	D.E.B. Wds	F.B.	118

APPROVED BY		NO. S-319
DIRECTOR OF PUBLIC WORKS		
DATE	Feb. 14, 1962	SHEET 2 OF 2

ALBERT A. WEBB ASSOCIATES
 CIVIL ENGINEERS - RIVERSIDE, CALIFORNIA
 APPROVED *Emmet N. Wadd* DATE 12/20/61
 R. E. 9876

CITY OF RIVERSIDE, CALIFORNIA
 DEPARTMENT OF PUBLIC WORKS
SEWER PLAN AND PROFILE
 ARGYLE WAY - DEMING COURT
 AND
 CORVALLIS COURT
 TRACT NO 2264