

SCALE: HORIZ. 1"=50' VERT. 1"=5'
 BENCH MARK: 5-5/12

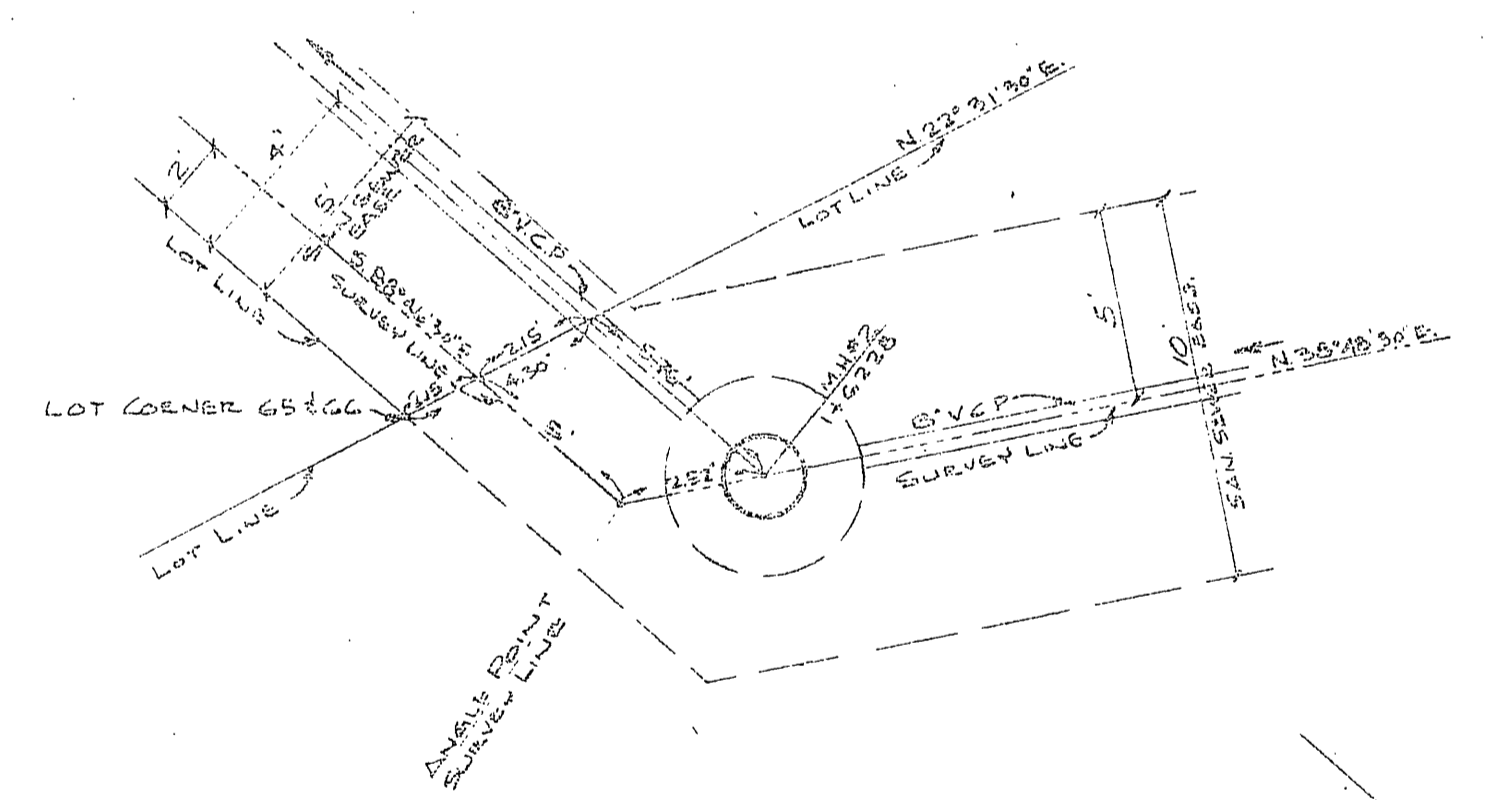
BENCH MARK:
 CAPPED MONUMENT AT STA. 0+175 ON
 E. BONNIE BRAE ST. ELEV. 399.695

GENERAL NOTES:

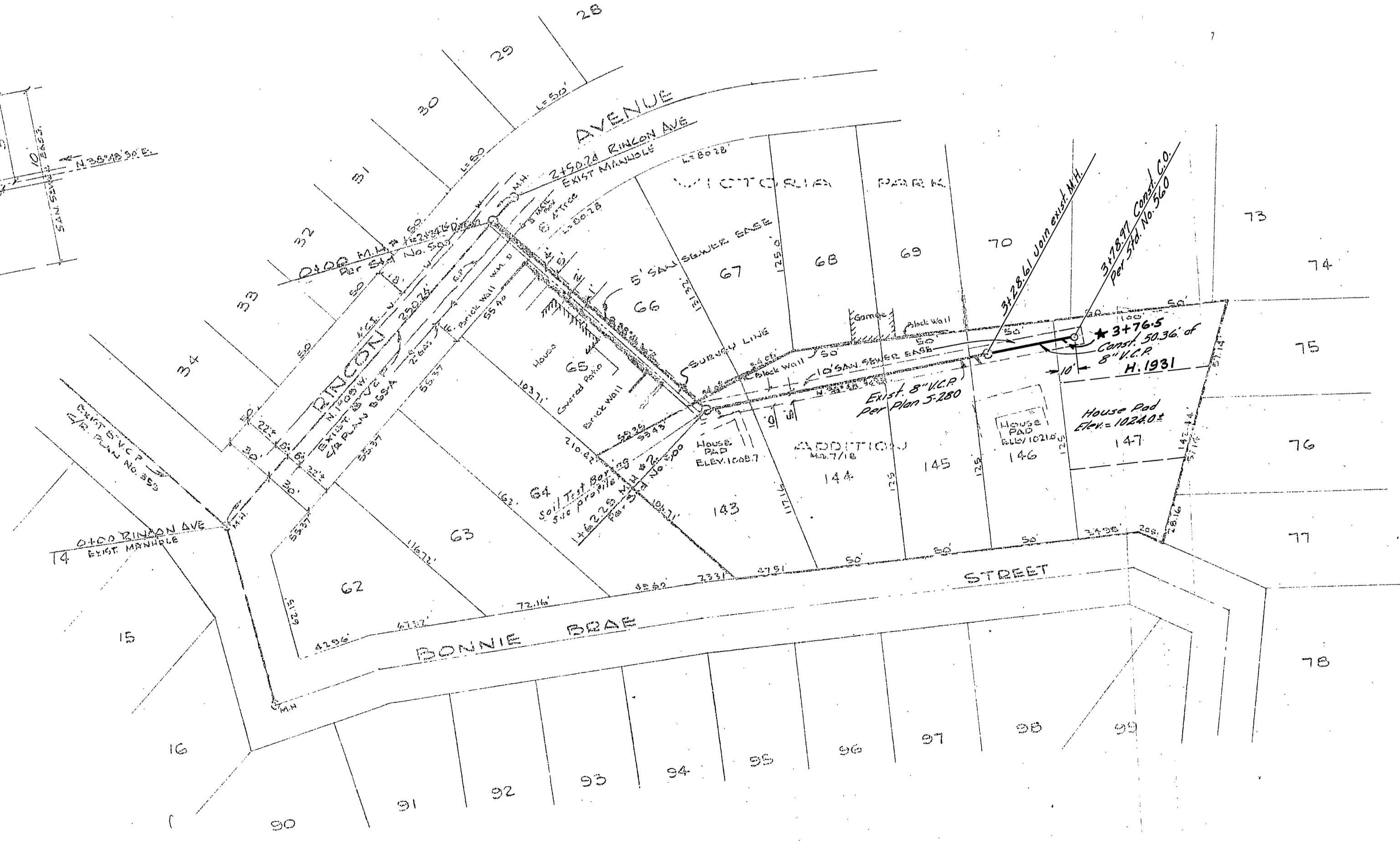
- CONSTRUCTION SHALL BE IN ACCORDANCE WITH CITY OF RIVERSIDE, DEPARTMENT OF PUBLIC WORKS SPECIFICATIONS NO. 461 AND STANDARD DRAWINGS.
- ALL HOUSE CONNECTION WYES SHALL BE LOCATED IN THE FIELD.

QUANTITY ESTIMATE

8" Whittled Clay Pipe	50 LF
8" x 8" VCR Wyes	1 Ea.
Cleanout, Std. Dwg. No. 560	1 Ea.



LOCATION DETAIL
 MANHOLE NO. 2
 STA. 1+63.05
 No Scale



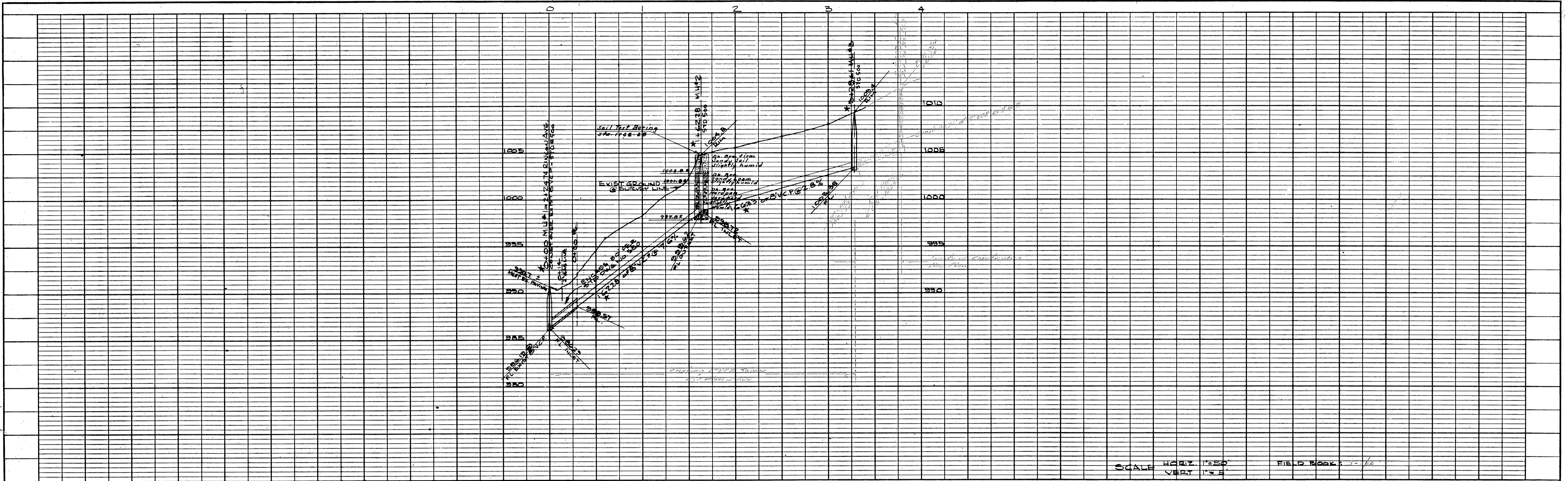
See 5-280

REVISIONS		CITY OF RIVERSIDE CALIFORNIA DEPARTMENT OF PUBLIC WORKS	
MARK	DATE	DESCRIPTION	

DESIGNED BY D.R.B. DRAINAGE Eng.	CHECKED BY W.D.G.	APPROVED BY <i>[Signature]</i> DIRECTOR OF PUBLIC WORKS	S-322 SHEET 1 OF 1
RECOMMENDED BY <i>[Signature]</i> ASSISTANT CITY ENGINEER	DATE Feb. 16, 1962		

PROFILE	DATE
SUBMITTED	
NOTE BOOK	
GRADES CHECKED	
BY: R.H. NOYER	
APPROVED	
BY: [Signature]	
DATE	

PLAN	DATE
SUBMITTED	
NOTE BOOK	
ALIGNMENT CHECKED	
BY: [Signature]	
APPROVED	
BY: [Signature]	
DATE	



SCALE HORIZ. 1"=50'
 VERT. 1"=5'
 FIELD BOOK 1-1/2

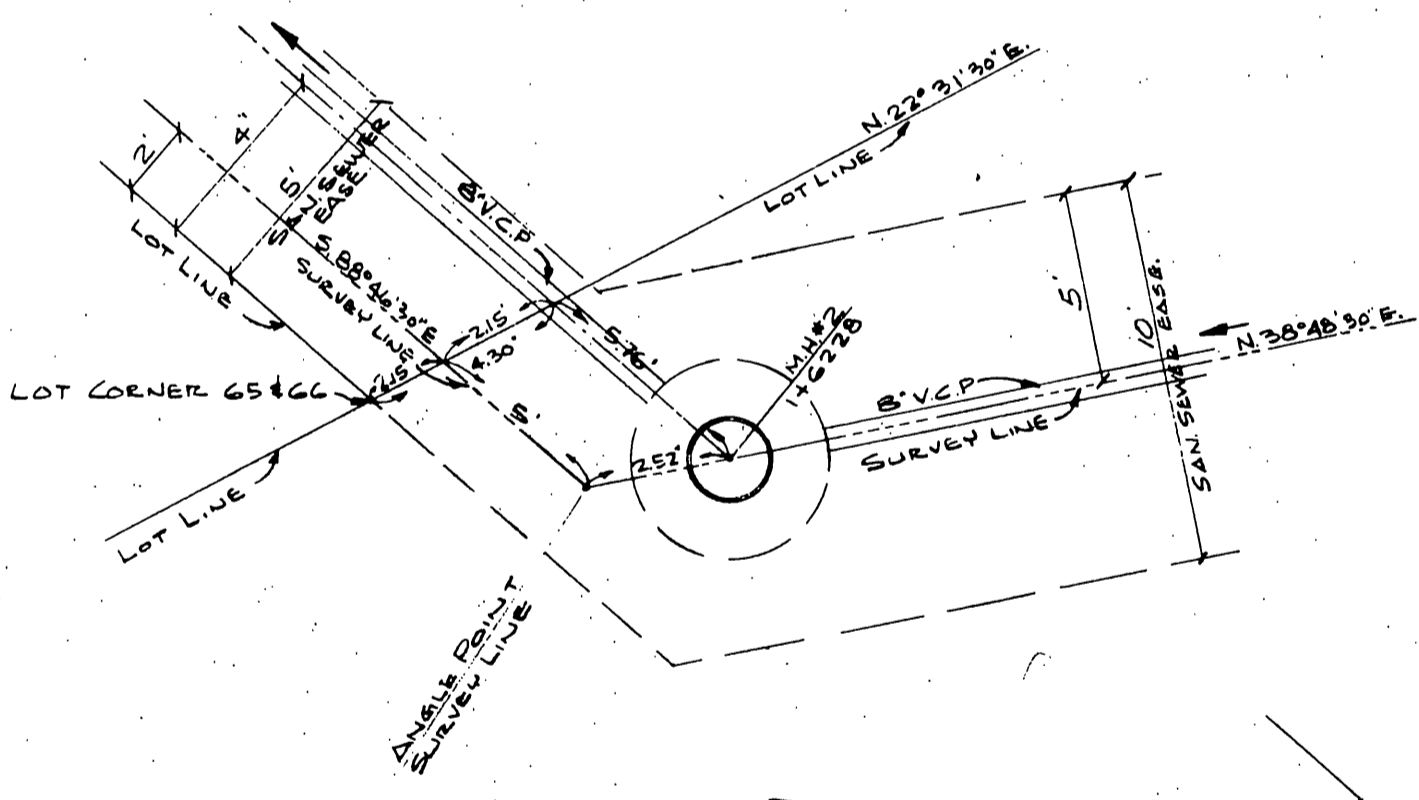
BENCH MARK:
 CAPPED MONUMENT AT STA 0+2.75 ON
 BONNIE BRAE ST ELEV. 989.695

GENERAL NOTES:

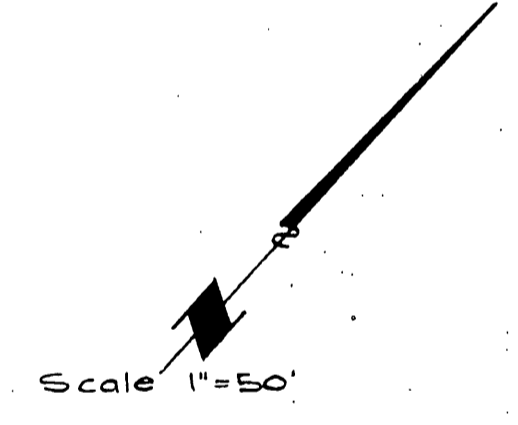
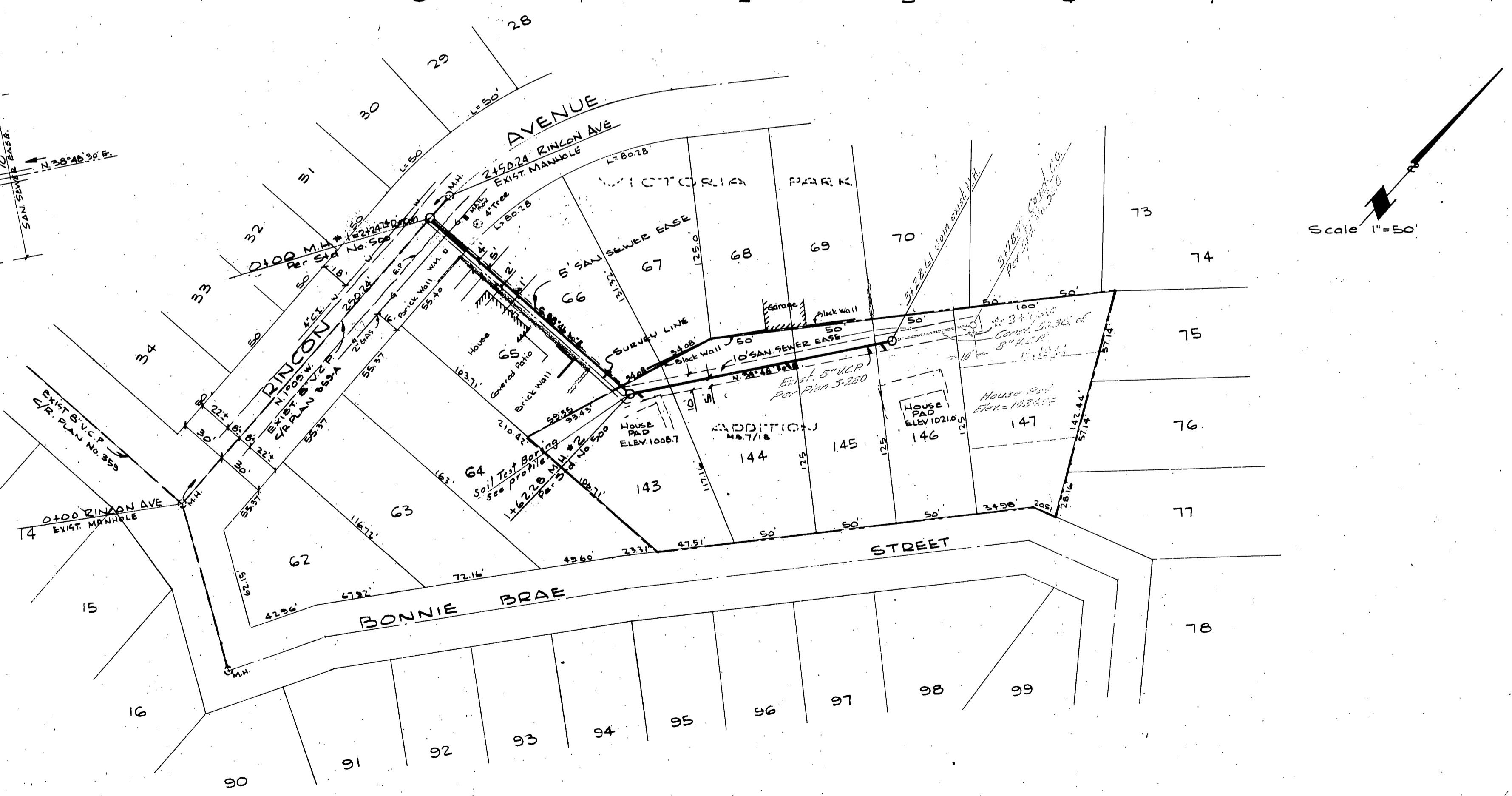
1. CONSTRUCTION SHALL BE IN ACCORDANCE WITH CITY OF RIVERSIDE, DEPARTMENT OF PUBLIC WORKS SPECIFICATIONS NO. 461 AND STANDARD DRAWINGS.
2. ALL HOUSE CONNECTION WYES SHALL BE LOCATED IN THE FIELD.

QUANTITY ESTIMATE

8" vitrified clay pipe 50 LF
 8" x 4" K&P wyes 1 EA
 Cleanout, Std. Day No. 360 1 EA



LOCATION DETAIL
 MANHOLE NO. 2
 STA 1+65.05
 No Scale



REVISIONS		CITY OF RIVERSIDE CALIFORNIA DEPARTMENT OF PUBLIC WORKS	
MARK	DATE	DESCRIPTION	
DESIGNED BY		CHECKED BY	APPROVED BY
DRAWN BY			<i>[Signature]</i>
RECOMMENDED BY			DIRECTOR OF PUBLIC WORKS
		ASSISTANT CITY ENGINEER	DATE 7.2.16.1962

BONNIE BRAE
SEWER EXTENSION NO. 1
 S-322
 SHEET 1 OF 1

PROFILE	
NO.	DATE

PLAN	
NO.	DATE