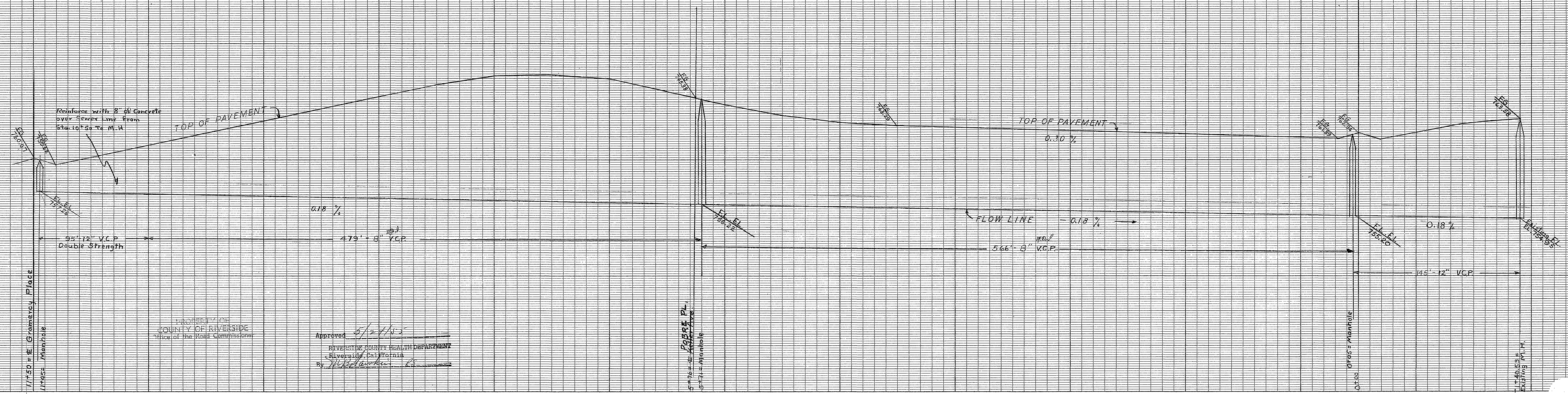


**QUANTITIES:**

Y BRANCHES	55
MANHOLES	4
10" V.C.P.	722'
12" V.C.P.	1415'
4" HOUSE CONNECTIONS	1650'

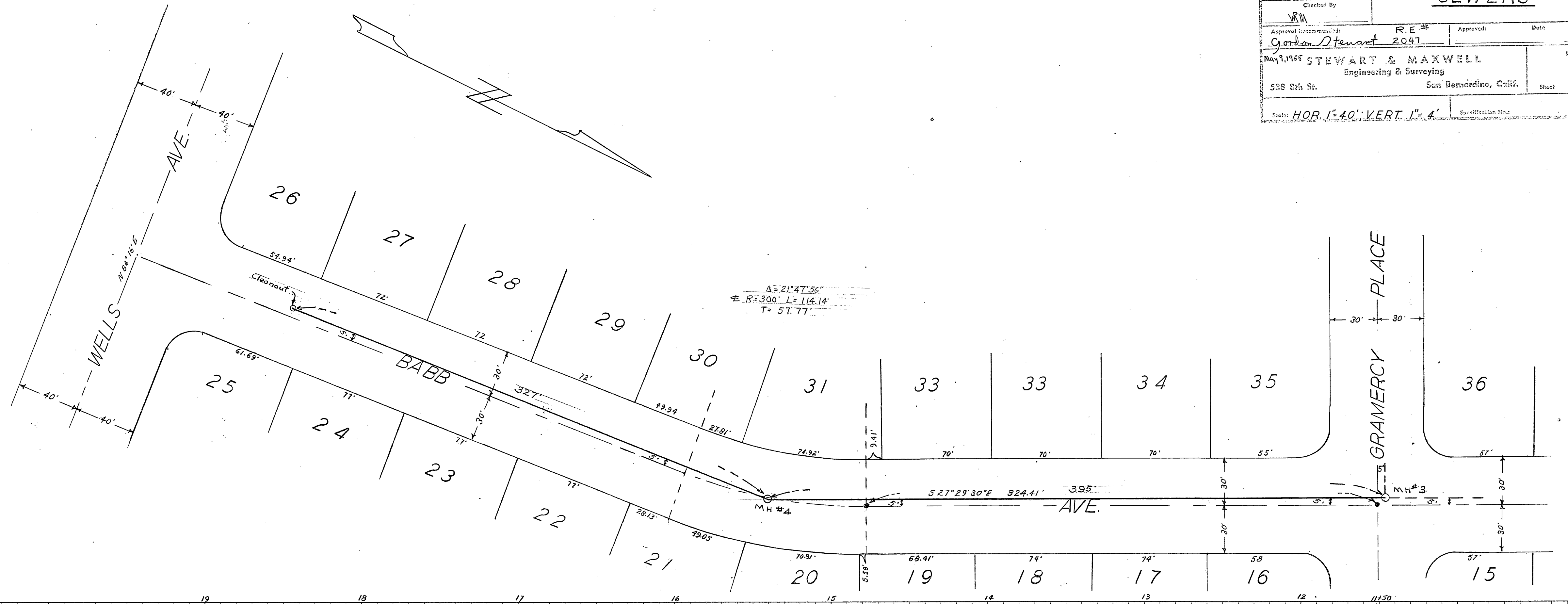
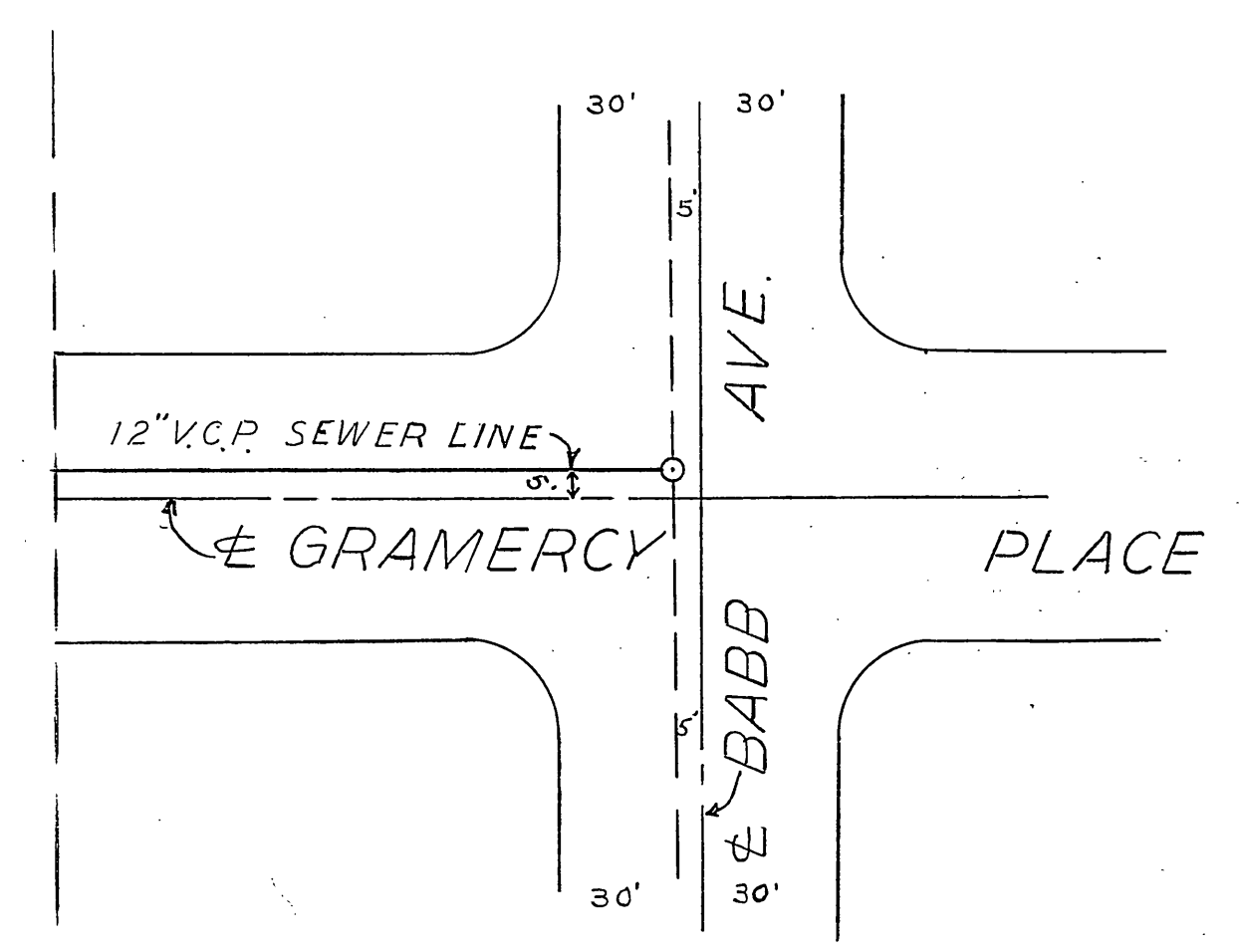
B.M. = RR Spike in P.P. N.E. Cor. Philbin & Babb Aves.  
 Elev. 757.01



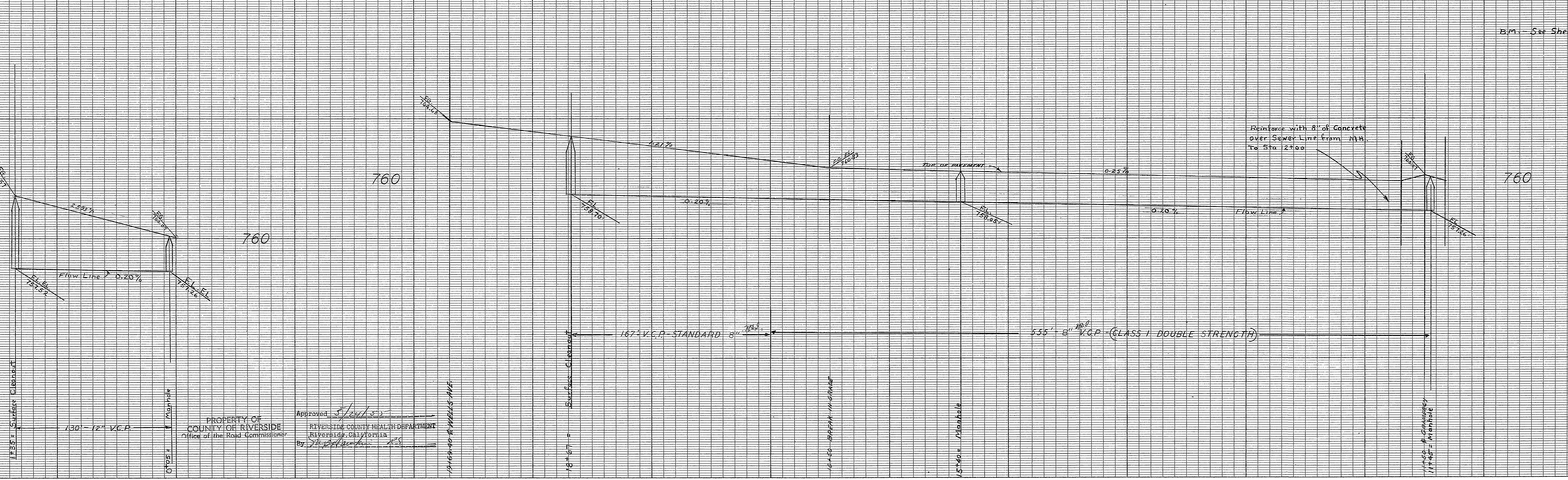
APPROVED: 5/24/55  
 RIVERSIDE COUNTY HEALTH DEPARTMENT  
 Riverside, California  
 By: [Signature]



File No.	SIERRA HIGHLANDS #2		
Drawn By	L.J.M.		
Checked By	V.M.		
Approved	R.E.#	Approved	Date
Approved	Gordon Stewart 2047		
Max 1,1955	STEWART & MAXWELL		Drawing No.
	Engineering & Surveying		
528 6th St.	San Bernardino, Calif.		Sheet 2 of 2
Scale: HOR. 1"=40', VERT. 1"=4'	Specification No.		



QUANTITIES: SEE SHEET #1



PROPERTY OF  
 COUNTY OF RIVERSIDE  
 Office of the Road Commissioner

Approved: *[Signature]*  
 RIVERSIDE COUNTY HEALTH DEPARTMENT  
 Riverside, California  
 By: *[Signature]*

3H.2 OF 2  
 S-324 713-L