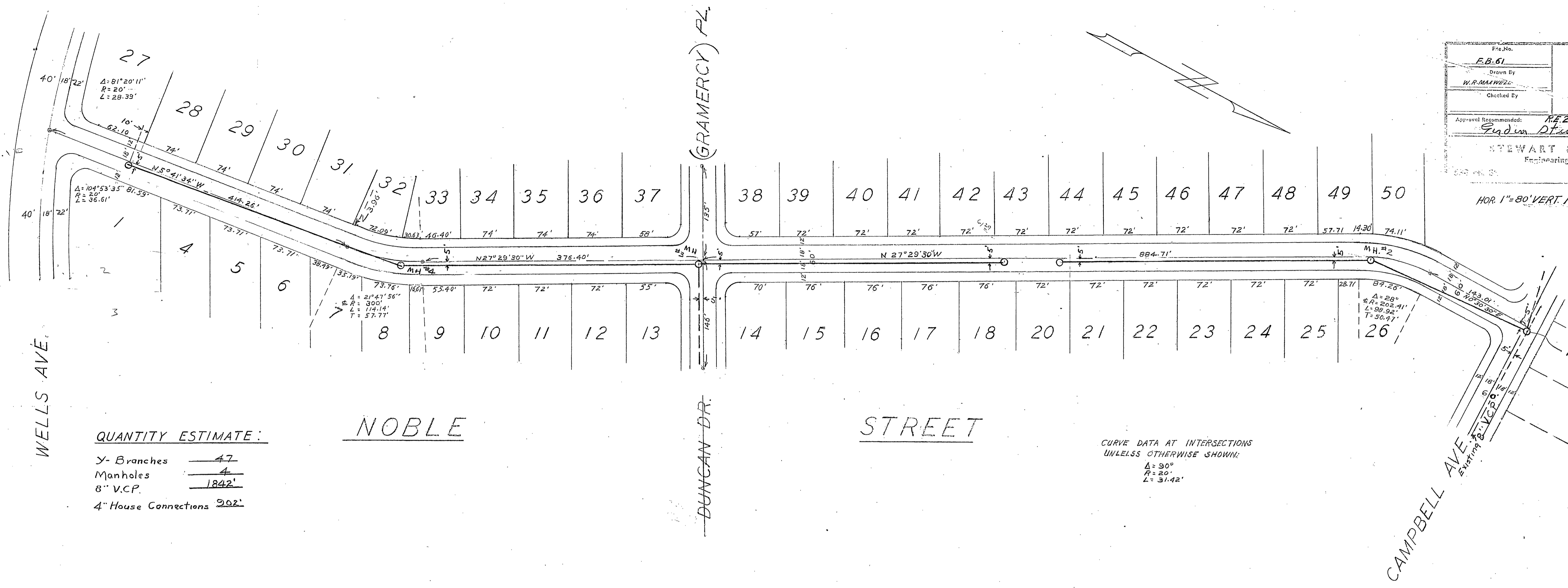


File No. F.B.61	SIERRA HIGHLANDS	
Drawn By W.R. MAHWEL	SEWER PLAN	
Checked By	Approved Recommended R.E. 2047 F. J. D. Stewart	Date
STEWART & MAXWELL Engineering & Surveying San Bernardino, Calif.		Sheet 1 of 2
HOR. 1"=80' VERT. 1"=4'		



QUANTITY ESTIMATE:

Y-Branches 47

Manholes 4

6" V.C.P. 1842'

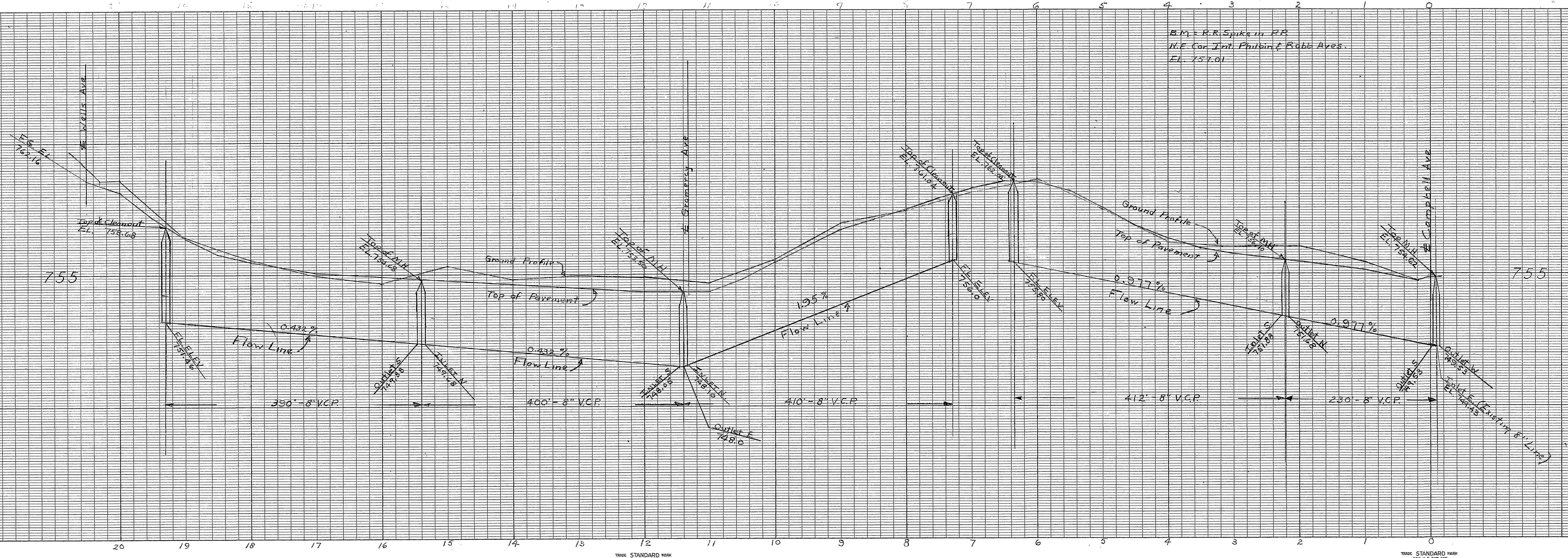
4" House Connections 202'

CURVE DATA AT INTERSECTIONS
UNLESS OTHERWISE SHOWN:

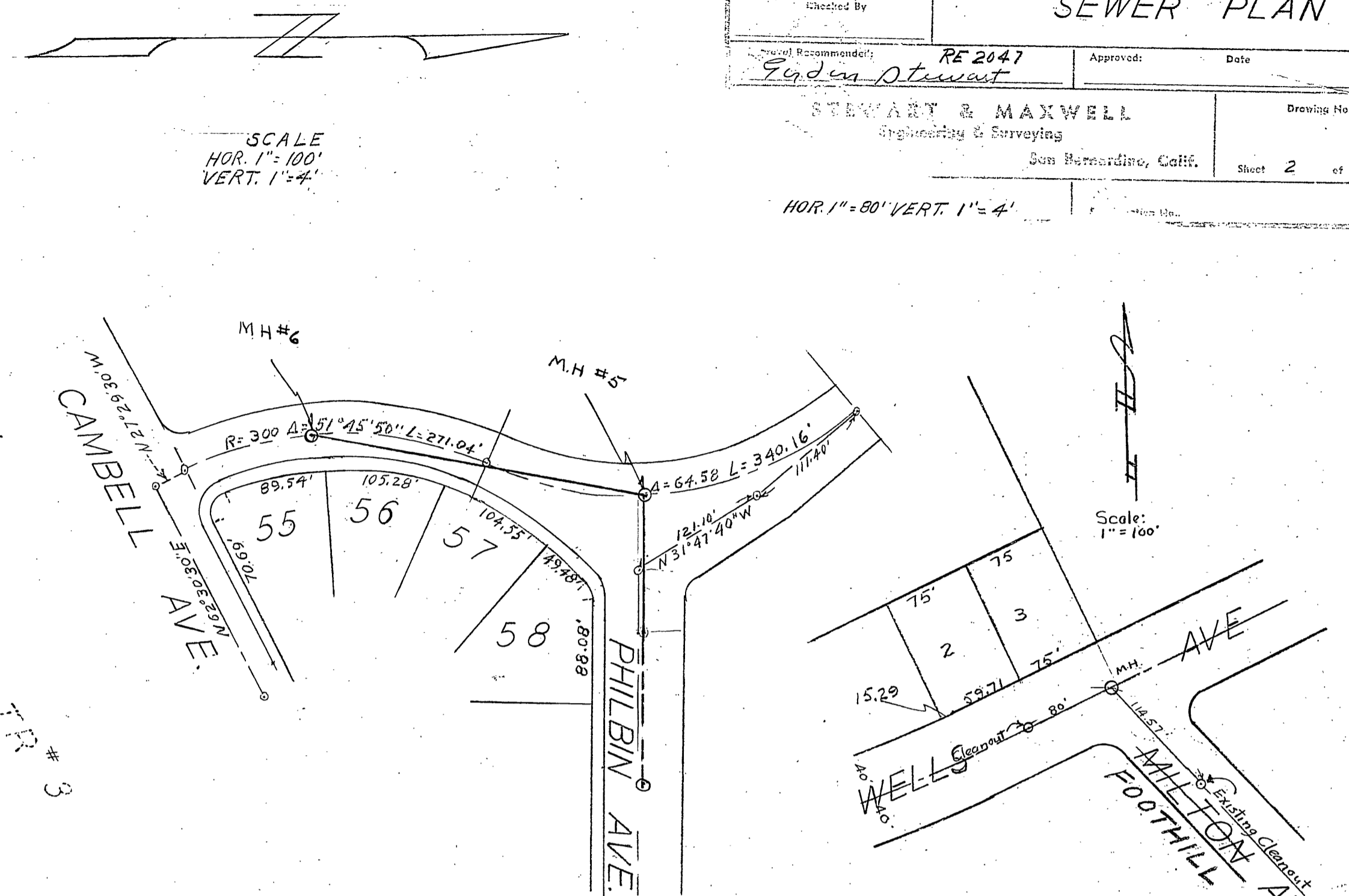
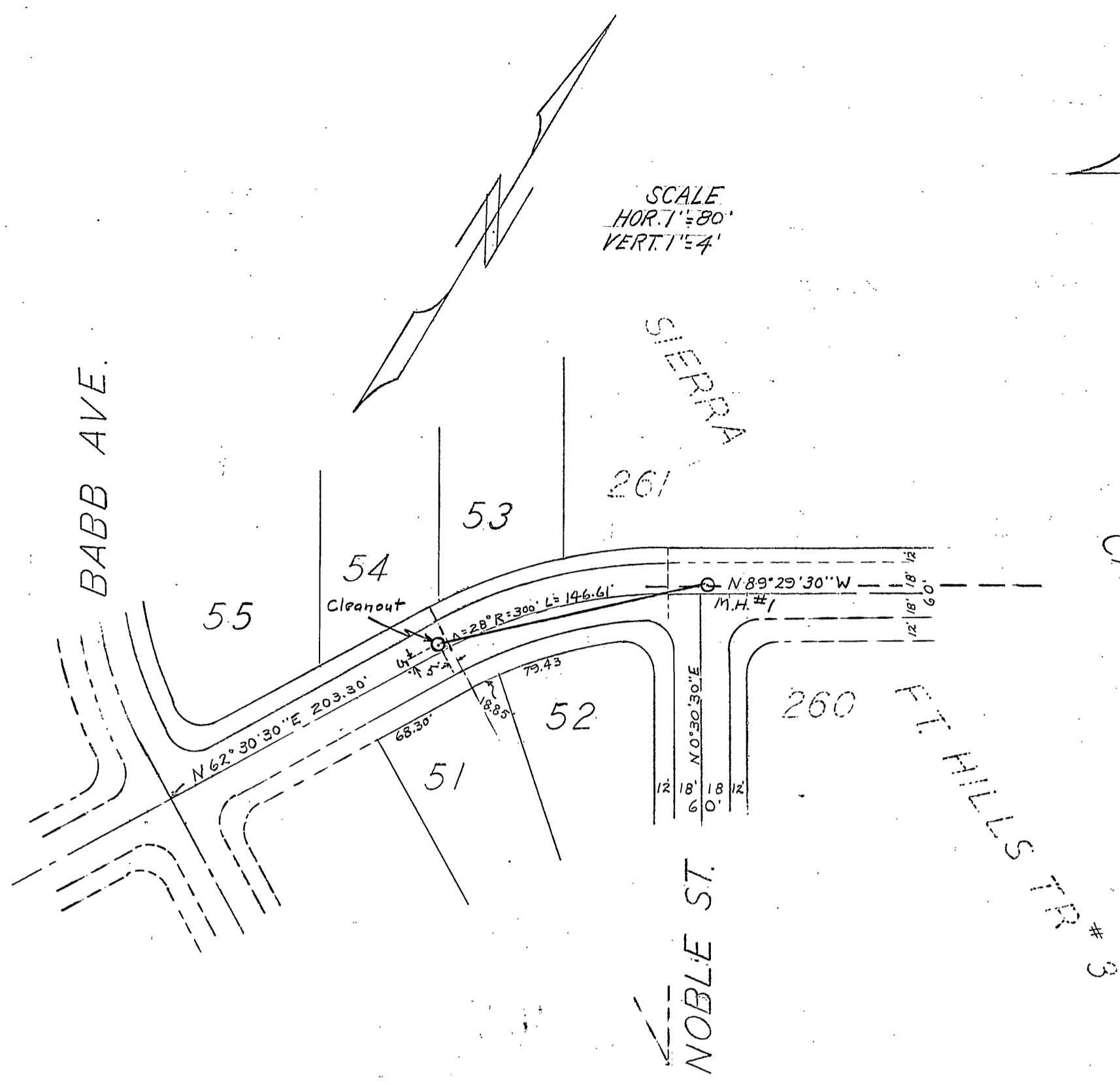
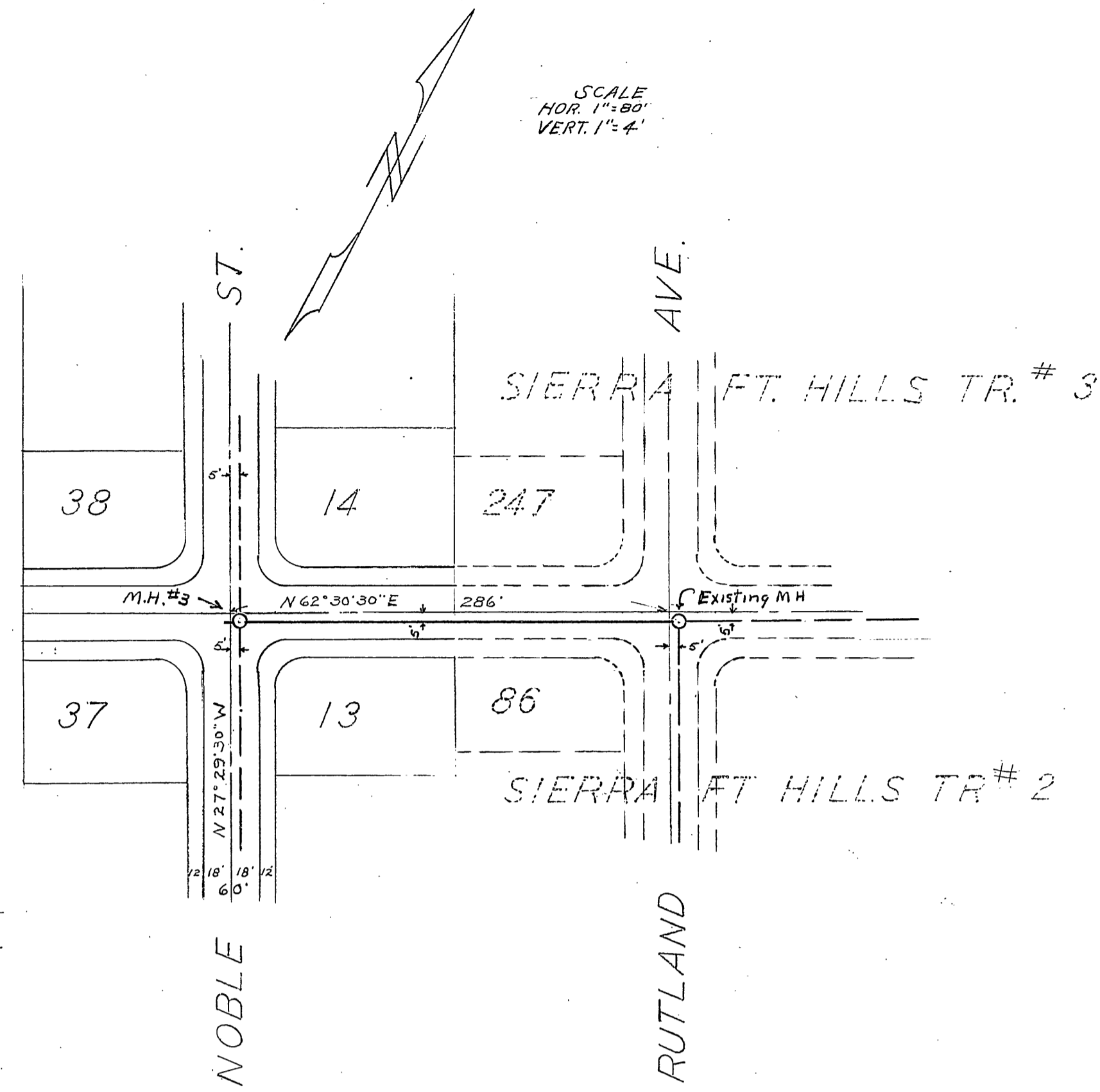
A = 20°
L = 30'
L = 20'
L = 31.42'

APPROVED BY: *B. D. Powell*
FOR ROAD COMMISSIONER
RIVERSIDE COUNTY

Approved by Health Dept 11-20-54



File No. F.B. 61	SIERRA HIGHLANDS SEWER PLAN	
Drawn By W.A. MAXWELL		
Checked By T. J. Stewart	RE 2047	Approved: _____ Date _____
STEWART & MAXWELL Engineering & Surveying San Bernardino, Calif.		Drawing No. Sheet 2 of 2



QUANTITY ESTIMATE:

Y- Branches	11
Manholes	3
8" V.C.P.	462'
4" House Connections	255'
12" V.C.P.	290'
6" V.C.P.	312'

GRAMERCY AVE. (~~DUNCAN DR.~~)

CAMPBELL AVENUE

BABB STREET

WELLS AVE.

B.M. = Top of F.H.N.W. Cap
at Rutland & Gramercy
Elev. 750.79

B.M. = R.R. Spike in P.P.
N.E. Cor. of Philbin & Babb Aves
Elev. 757.01

PROFILE:
Hor. Scale 1" = 80'
Vert. Scale 1" = 4'

PROFILE:
Scale 1" = 80'

