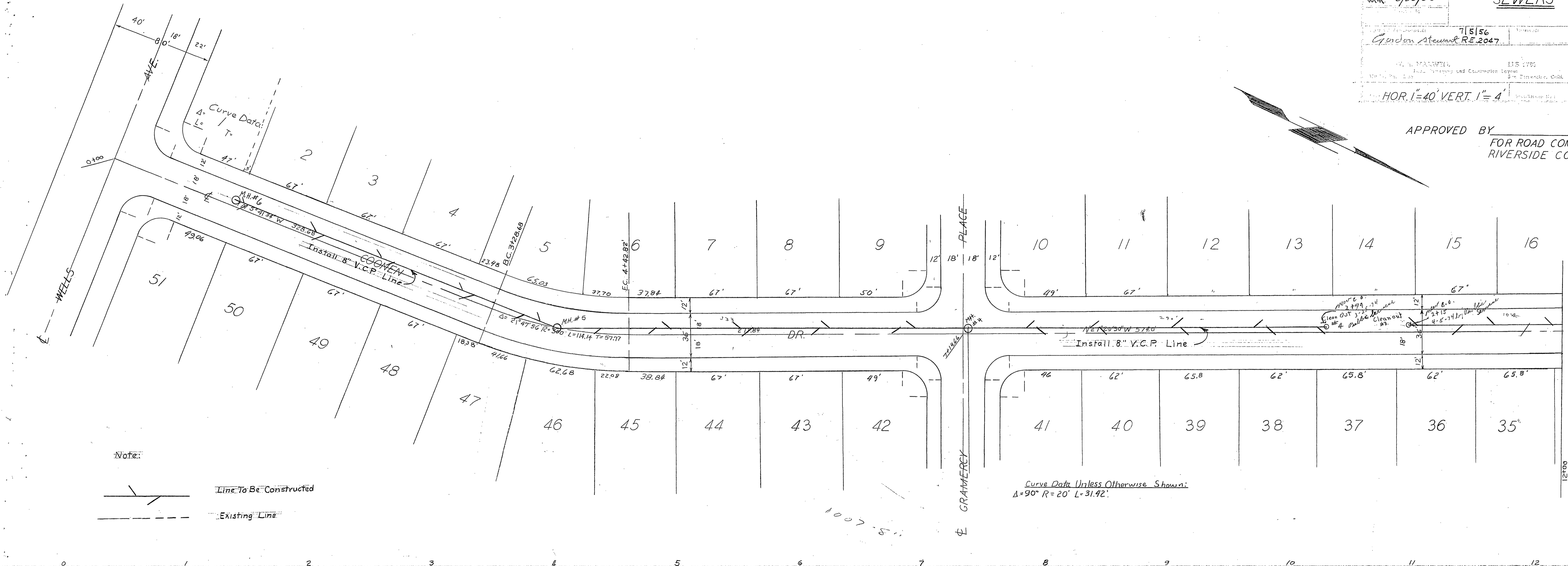


WRM 5/26/56

SEWERS

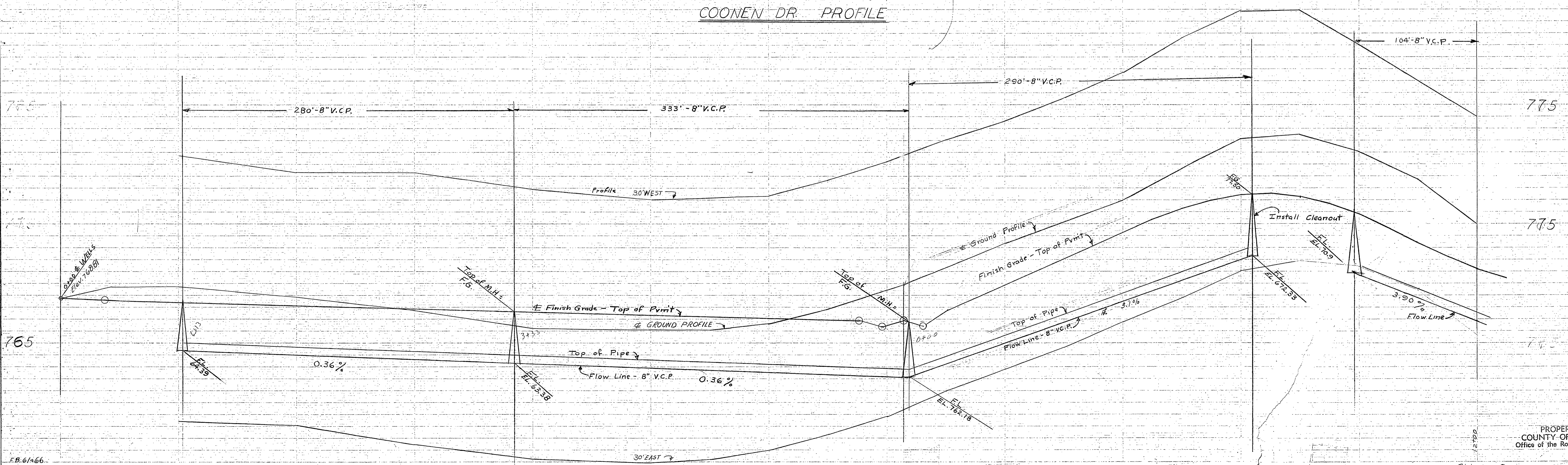
75156	75156
Gordon Stewart R.E. 2047	115 1790
H. L. MANWELL Civil, Surveying and Construction Engineer 220 S. Third St., Riverside, Calif.	
HOR. 1" = 40' VERT. 1" = 4'	

APPROVED BY  
FOR ROAD COMMISSIONER  
RIVERSIDE COUNTY



Note:  
 Line To Be Constructed  
 Existing Line

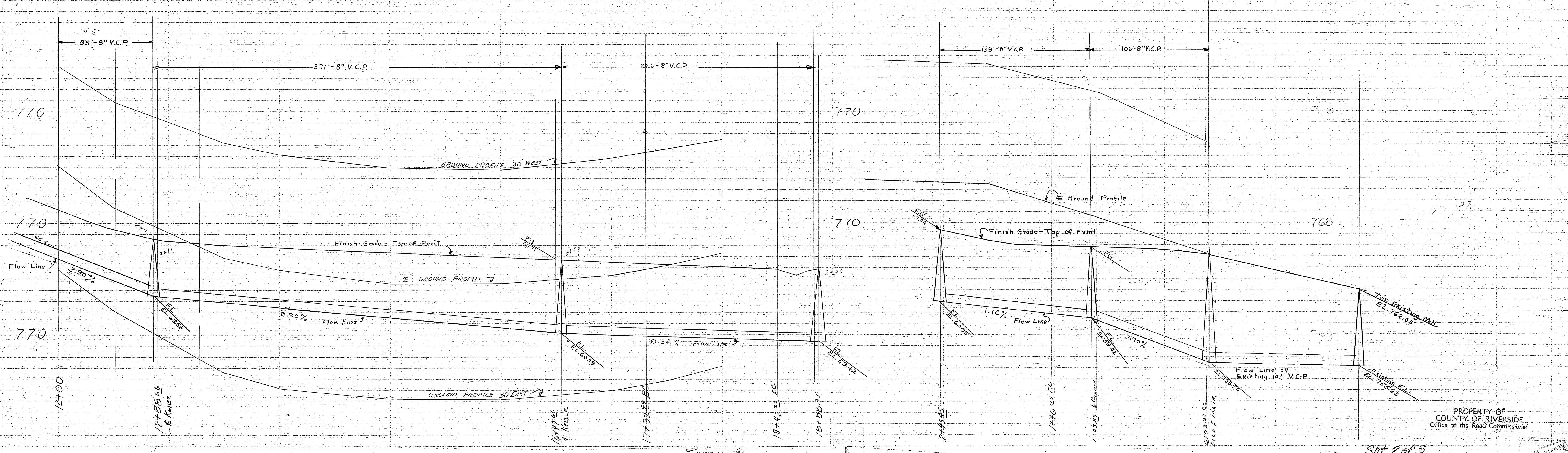
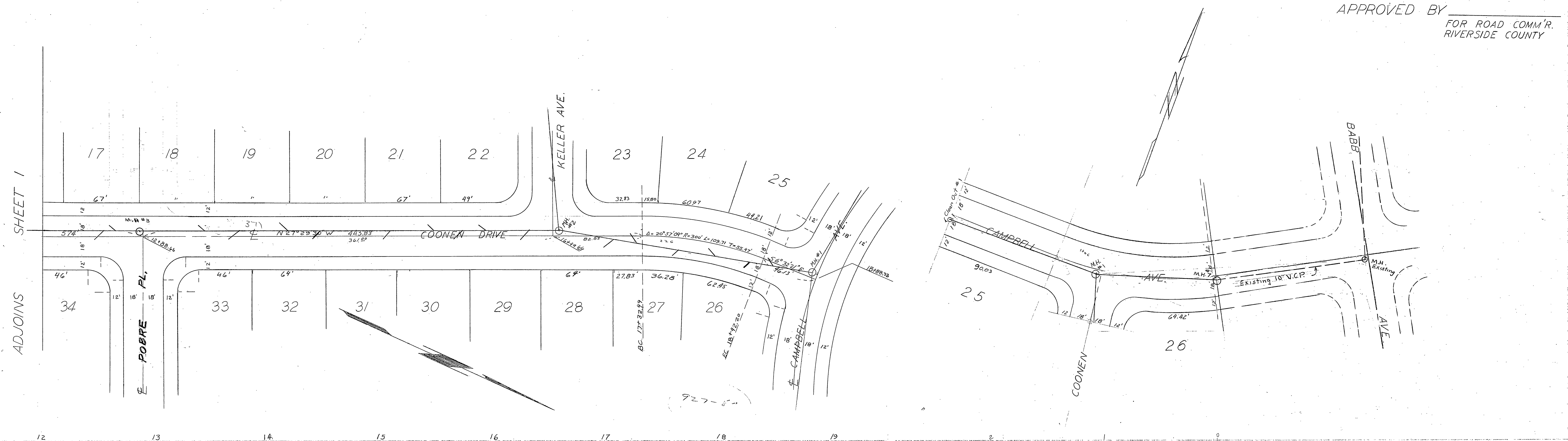
COONEN DR. PROFILE



ADJOINS SHEET 2

715156	Project No.	Date
Gordon Stewart RE.2047		
SIERRA DOWNS #1		11.5 2792
City of Riverside and Co-sponsors		City of Riverside, Calif.
Sheet 2 of 3		
HOR. 1"=40' VERT. 1"=4'		

APPROVED BY \_\_\_\_\_  
FOR ROAD COMM'R.  
RIVERSIDE COUNTY



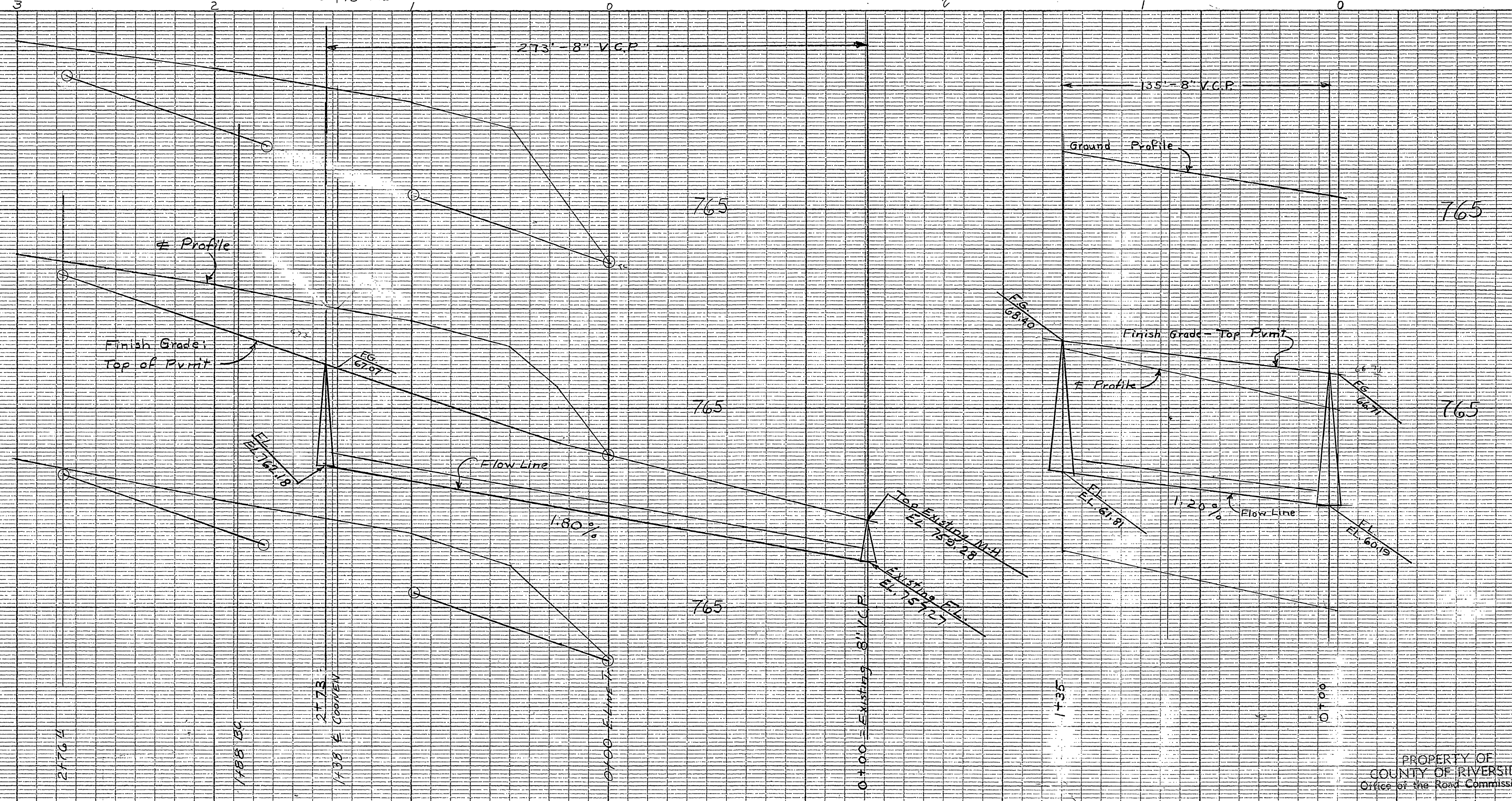
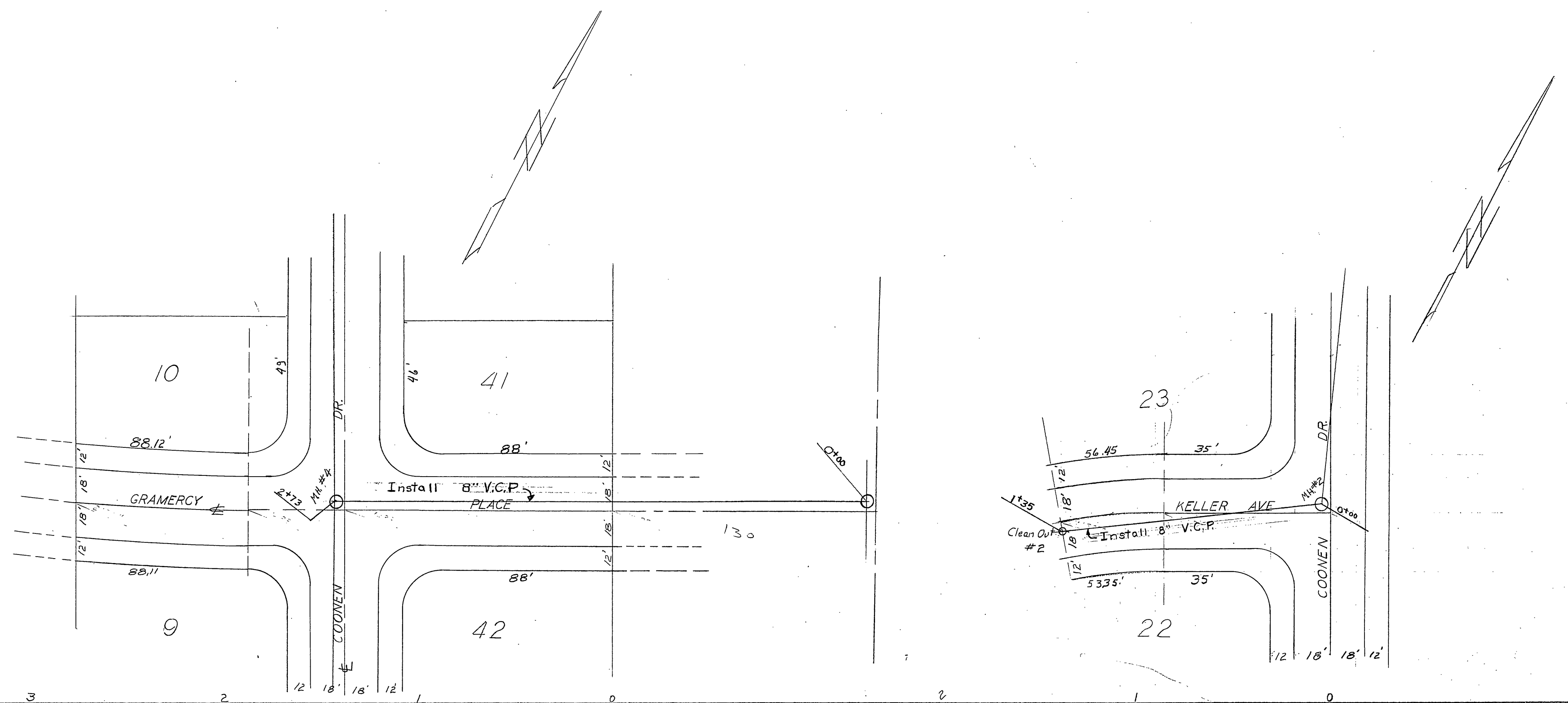
5/26/56

715156  
Gordon Stewart RE 2047  
715156  
Gordon Stewart RE 2047  
300 No. 1st St. Riverside, Calif.  
SIERRA DOWNS #1  
Sewerage and Construction Engineer  
Sewer Division, C.P.S.  
Sheet 3 of 3  
HOR 1:40 VERT 1"=4'

APPROVED BY  
FOR ROAD COMM'R  
RIVERSIDE COUNTY

TOTAL QUANTITIES:

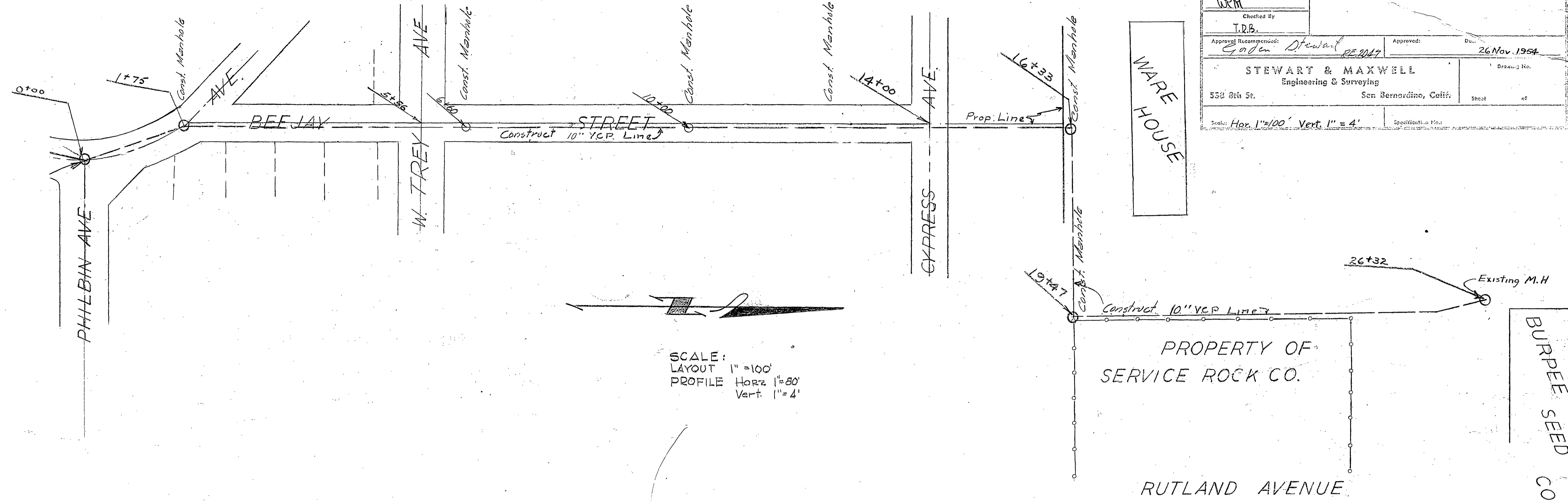
8" V.C.P.	2342'
4" LATERAL	1530'
MANHOLES	7
CLEANOUTS	4
Y-BRANCHES	51



PROPERTY OF  
COUNTY OF RIVERSIDE  
Office of the Road Commissioner

7.8.42.66

SEWER OUTFALL  
SIERRA DOWNS #1



SCALE:  
LAYOUT 1" = 100'  
PROFILE Horiz 1" = 80'  
Vert. 1" = 4'

File No.	
Drawn By	WRM
Checked By	T.R.B.
Approval Recommended:	Edwin Stewart RE 2017
Approved:	26 Nov. 1964
STEWART & MAXWELL Engineering & Surveying	
534 8th St.	San Bernardino, Calif.
Scale: Hor. 1" = 100' Vert. 1" = 4'	Specification No.

