

Drawn By	SIERRA DOWNS
Checked By	SEWERS
Approval Recommended:	Approved:
W. R. MAXWELL Land Surveying and Construction Layout 350 W. Base Line Scale: HOR: 1"=40' VERT: 1"=4'	LIS 2788 San Bernardino, Calif. Sheet: 1 of 3 Registration No.

**NOTES**

All work shall conform with the specifications for the improvement of subdivision streets of Riverside County dated 1956.

Relocation of existing utilities to clear the work shall be the responsibility of the subdivider.

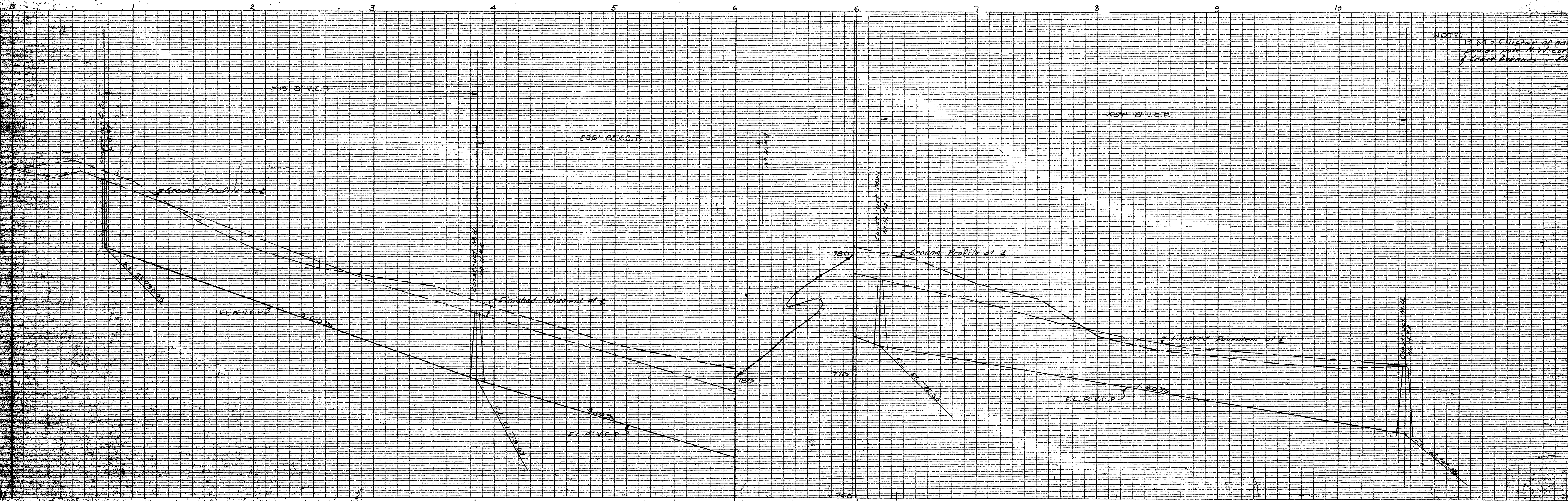
*Merrill Butler*  
MERRILL BUTLER, JR. R.E. 8323

**QUANTITIES**

8' V.C.P. = 2246 Feet  
4' House laterals - 32 @ 30' each = 1960 Feet  
Wyes - 5  
Manholes - 7  
Clearcuts - 2

DATE 4-29-57

APPROVED Sewer Lines  
SIVERSIDE COUNTY HEALTH DEPARTMENT  
BY J. B. Hawken, R.E.

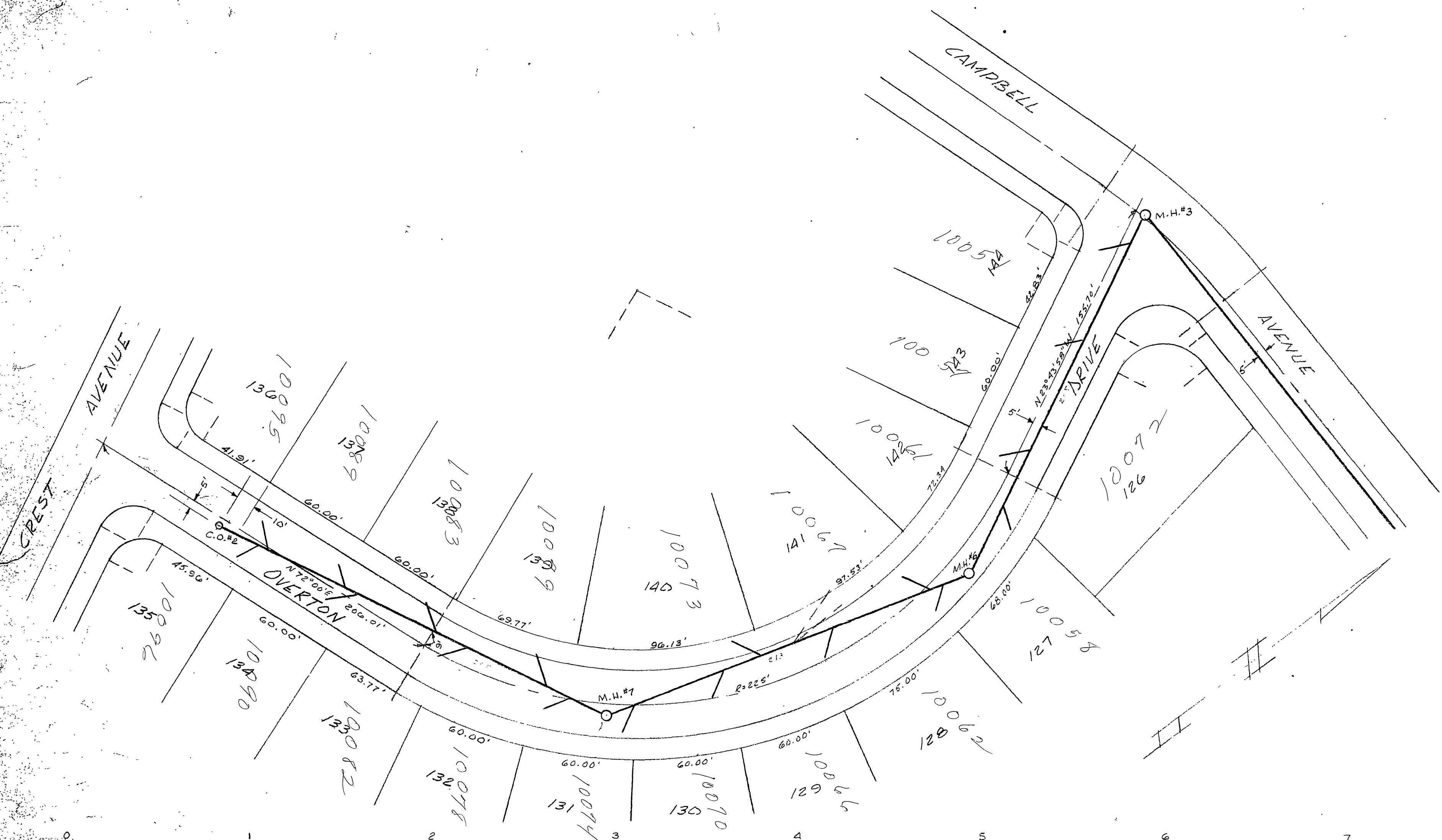


NOTE: 1/4" = Cluster of nails in 3/4" dia. power pole N.W. corner of corner of Crest Avenue Elev. 787.14'

OVERTON DRIVE

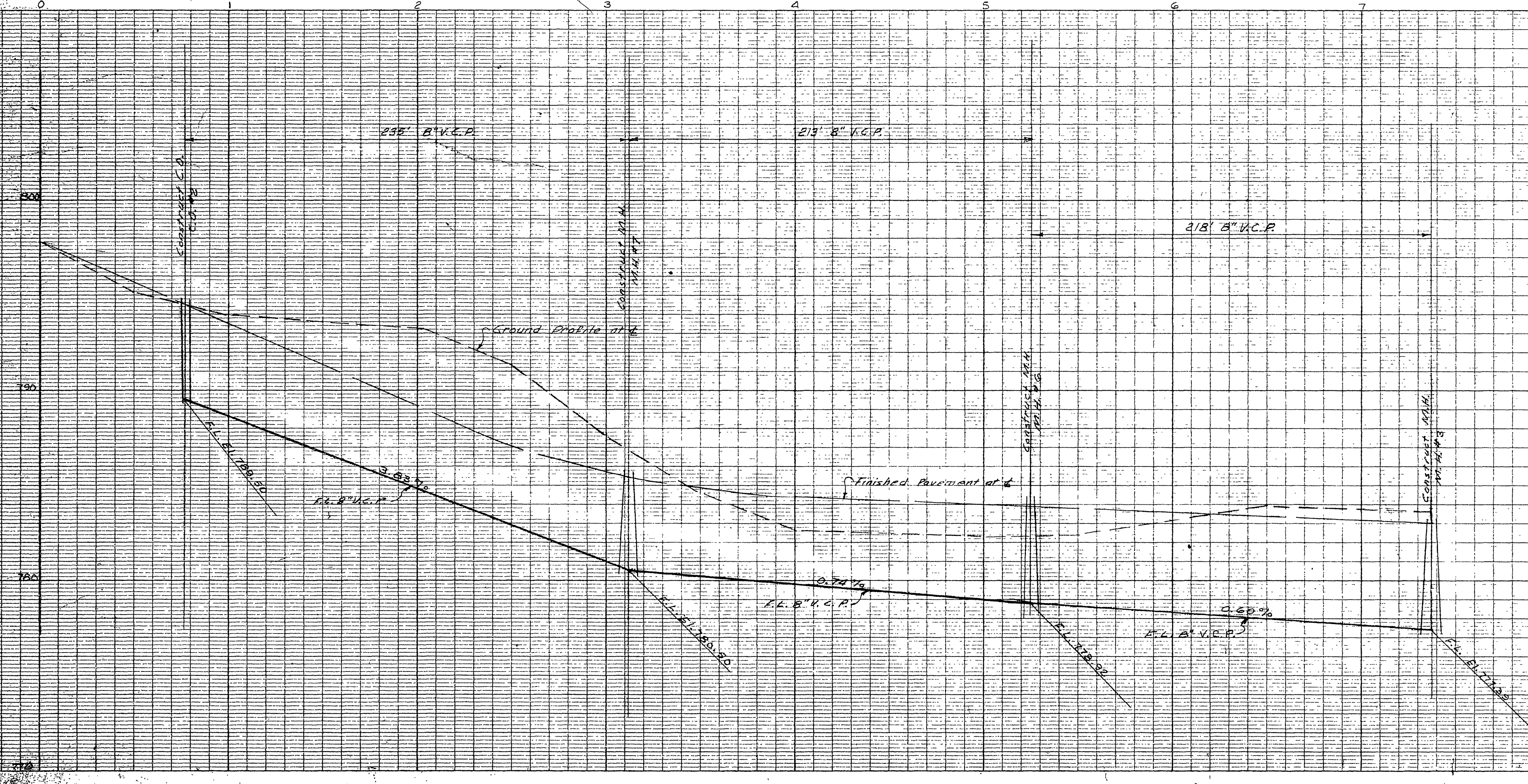
File No.	SIERRA DOWNS NO. 3	
Drawn By	SEIVERS	
Checked By		
Approval Recommended:	Approved:	Date:
W. R. MAXWELL Land Surveying and Construction 350 W. Base Line		LLS 2788 Loyalt San Bernardino, Calif.
Scale: HOR: 1"=40' VERT: 1"=4'		Specification No.:
Merrill Butler		Drawing No. Sheet 2 of 3

MERRILL BUTLER, JR. RE. 2323



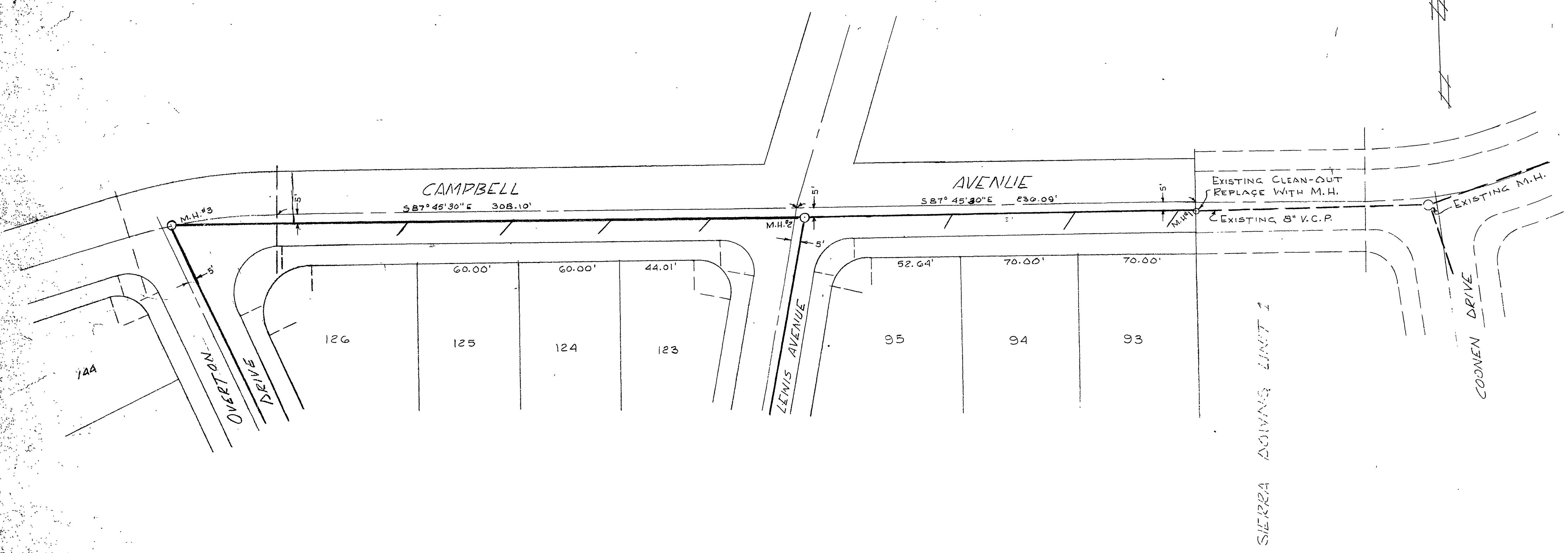
DATE: 4-29-58  
 APPROVED: Sewer Lines  
 KIMBERLY COUNTY HEALTH DEPARTMENT  
 BY: H. H. Hankins R.S.

Note: 15 M. Cluster of marks in S side of power pole N.W. corner of Campbell & Crest Avenues Lot 10071

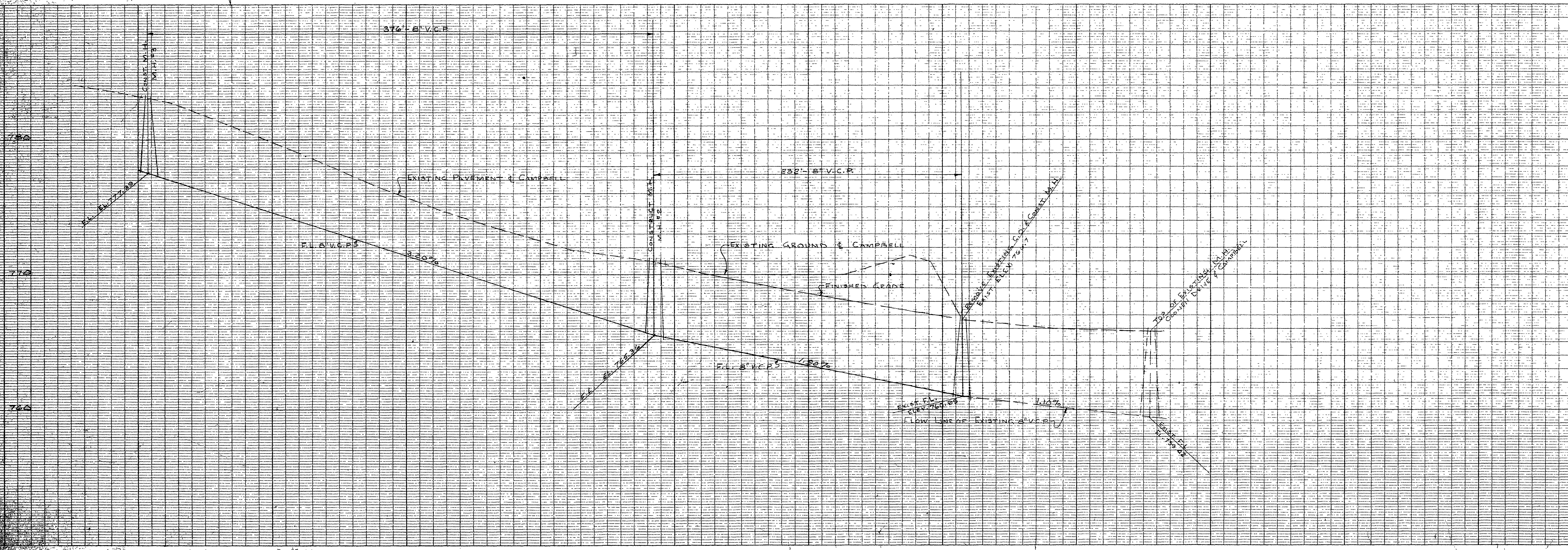


File No.	SIERRA DOWNS NO. 8	
Drawn By	SEEVERS	
Checked By		
Approval Recommended:	Approved:	Date:
W. R. MAXWELL 150 W. Base Line Land Surveying and Construction Layout San Bernardino, Calif.	LLS 2788	Sheet 3 of 3
Scale: HOR: 1"=40' VERT: 1"=4'		Specification No.:

*Merrill Butler, Jr.*  
MERRILL BUTLER, JR. R.E. 8323



DATE: 4-29-57  
APPROVED: Sewer lines  
RIVERSIDE COUNTY HEALTH DEPARTMENT  
BY: *M. Salawhin R.S.*



NOTE: B.M. = Cluster of nails in S. side of post set in E. corner of Campbell & East Avenue Elev. 787.14