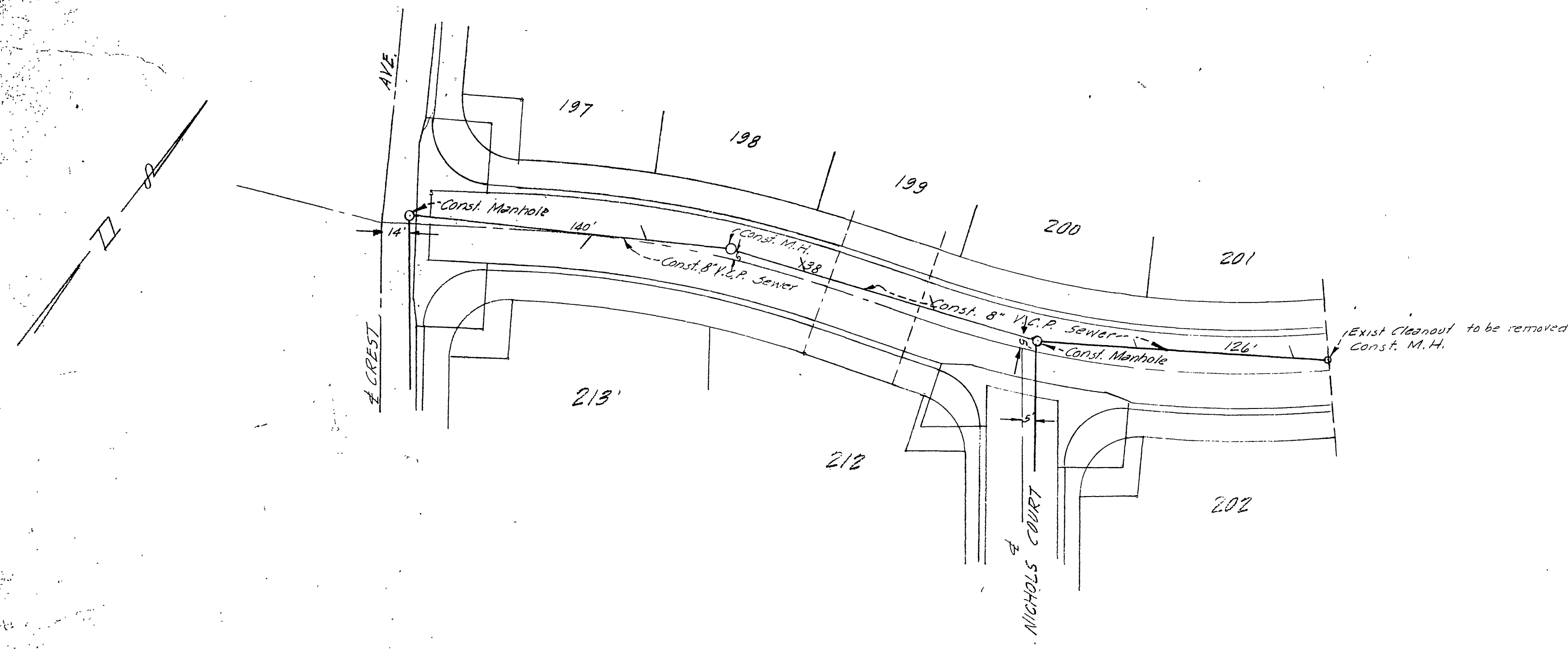
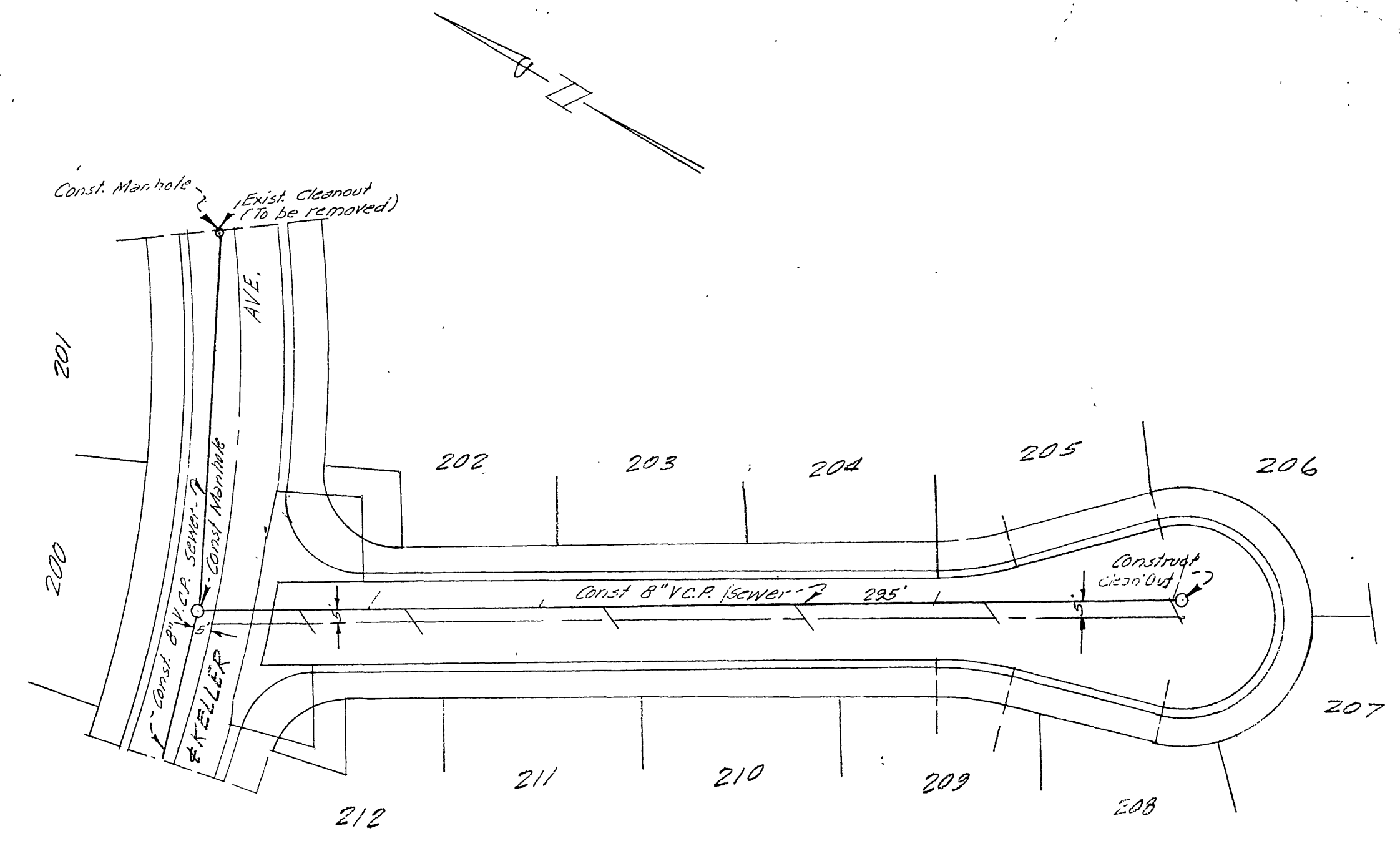


STAN DOWNS SEWER PLANS KELLER AVE & NICHOLS COURT	
DATE: 10/10/53	PROJECT: 10' x 10'
W. R. MAXWELL Civil, Surveying and Consulting Layout	EIS 2786 San Bernardino Calif.
Scale: 1" = 40'	Sheet No. 1 of 1

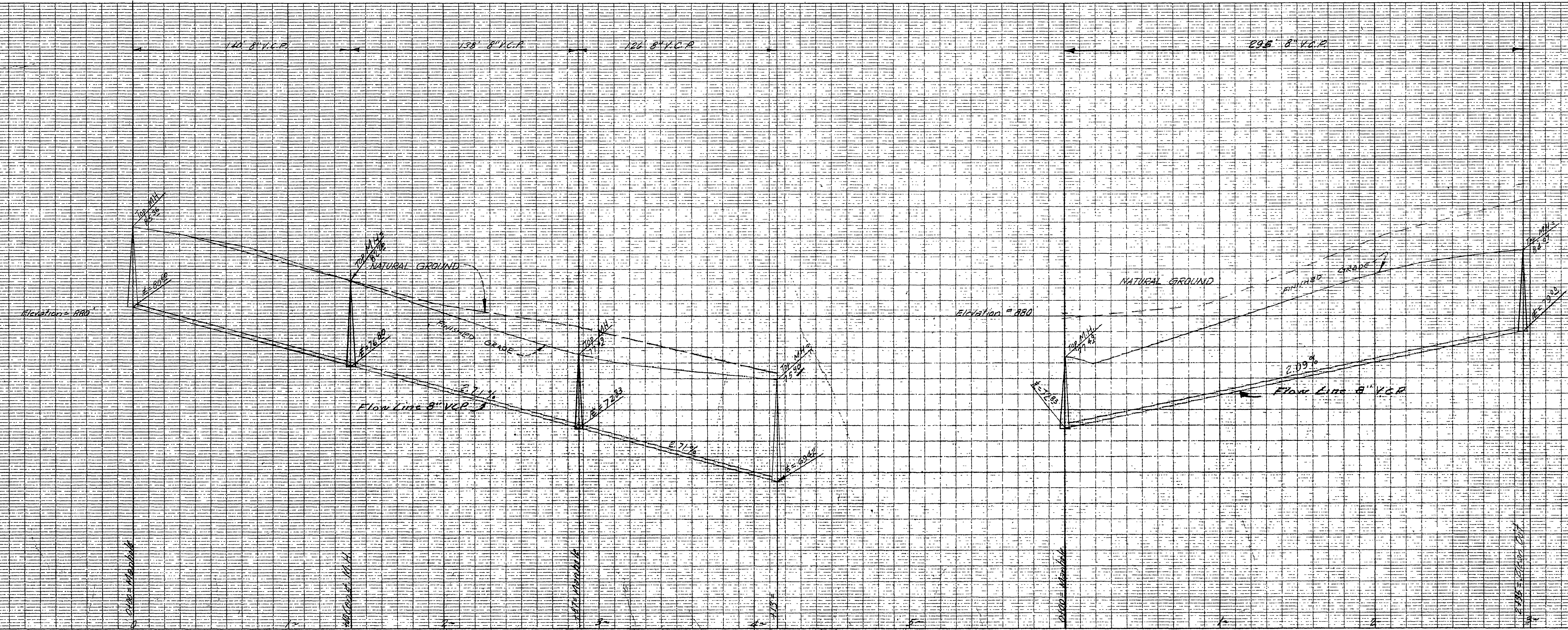


KELLER AVENUE



NICHOLS COURT

QUANTITIES:
 1148' 8" V.C.P.
 5 Manholes
 23 Wyes
 538' 2" VCP (Laterals)
 1 Cleanout

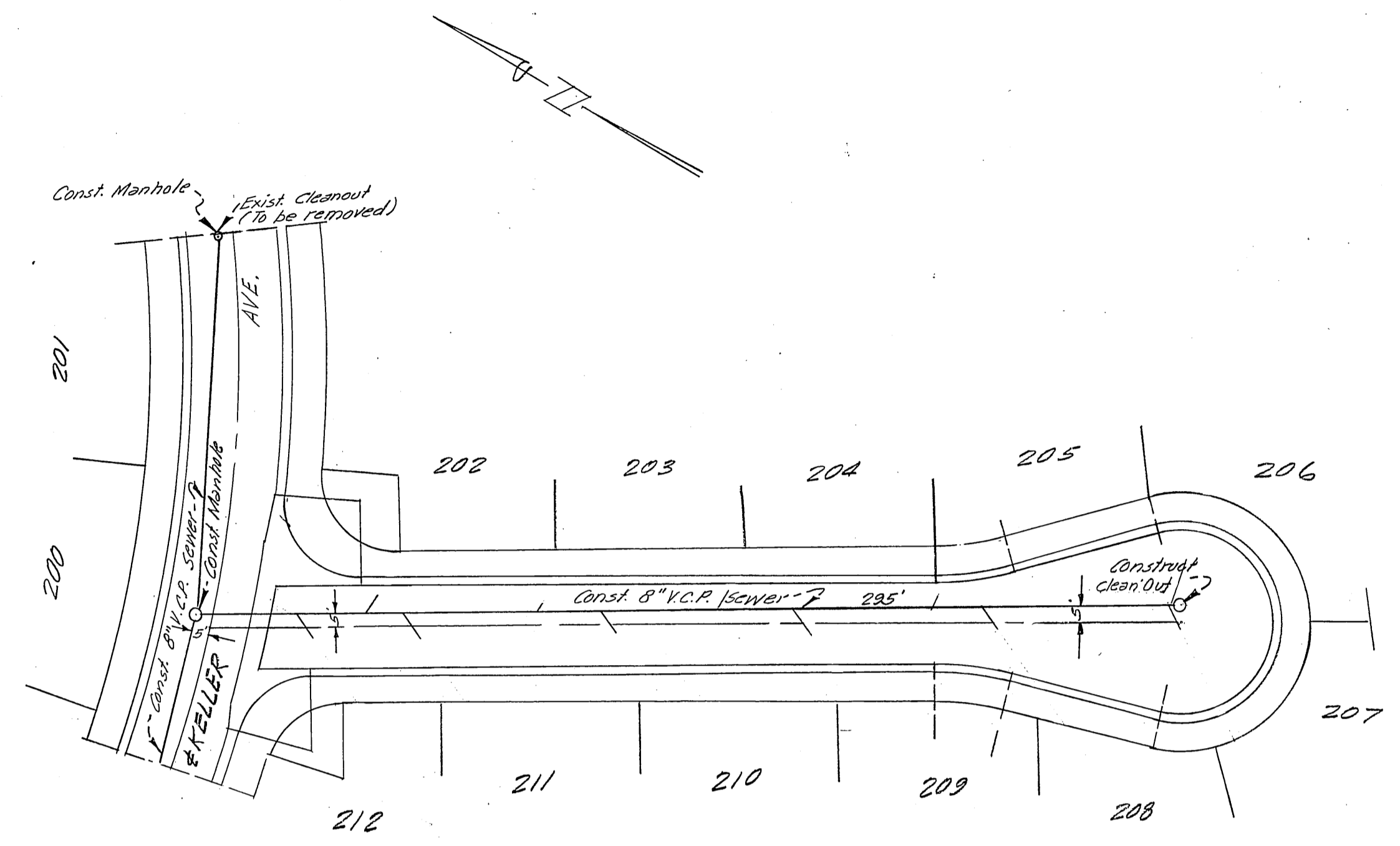
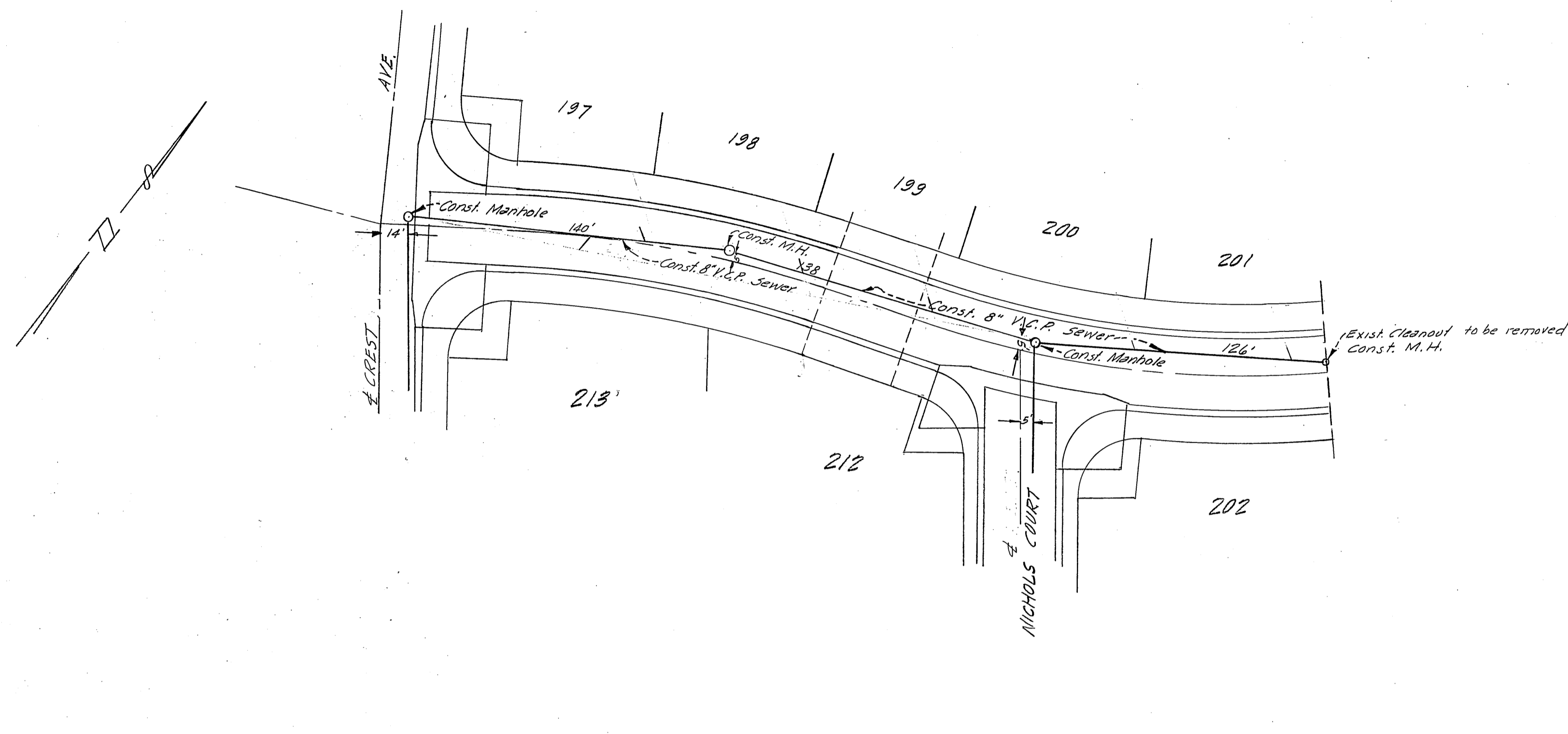


S-331 731-J

SIERRA DOWNS 5
SEWER PLANS
KELLER AVE & NICHOLS COURT

M^{rs} E. Bryant RE4562
Oct. 1958

Scale: Horiz 1"=40', Vert 1"=4'

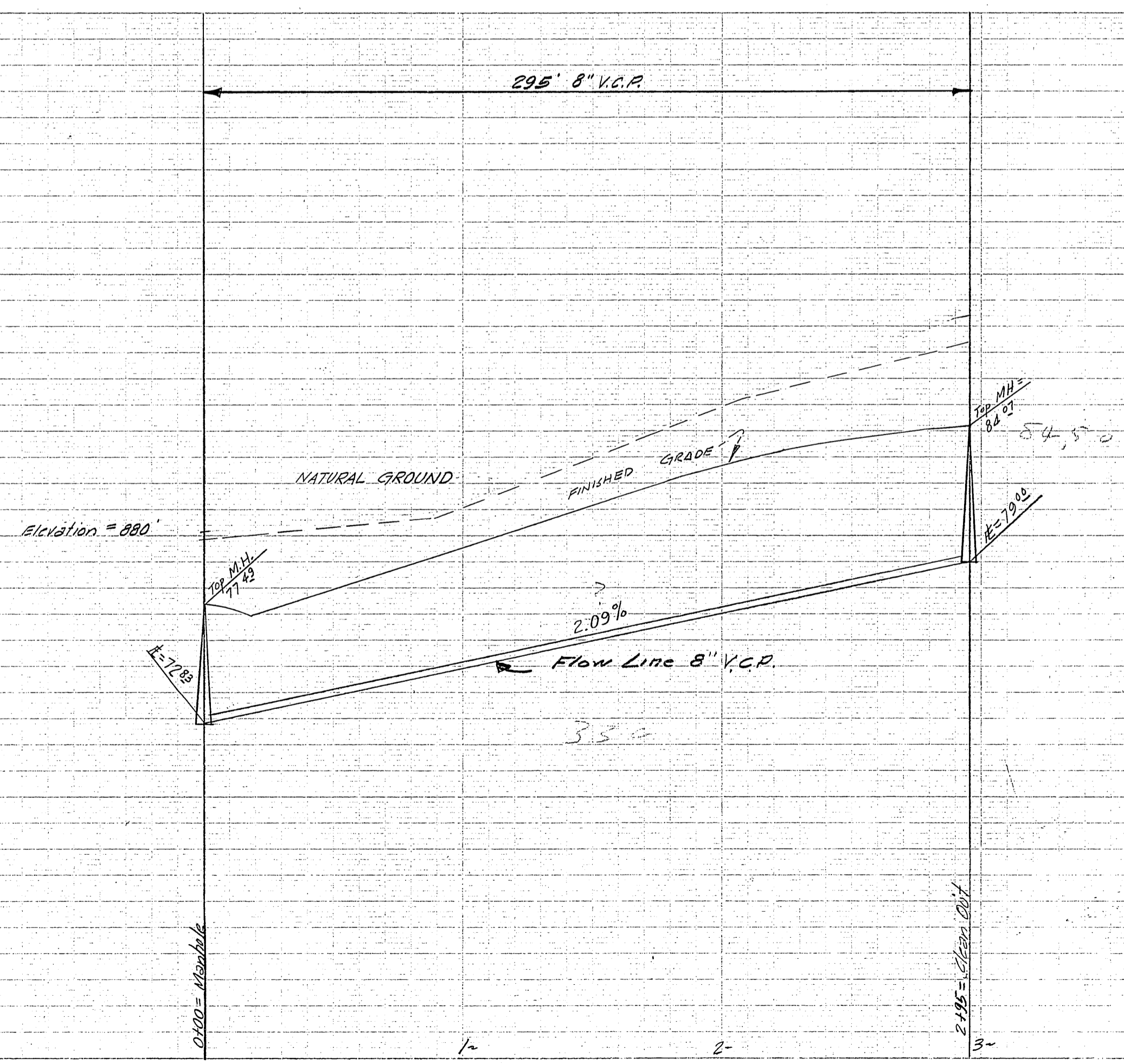
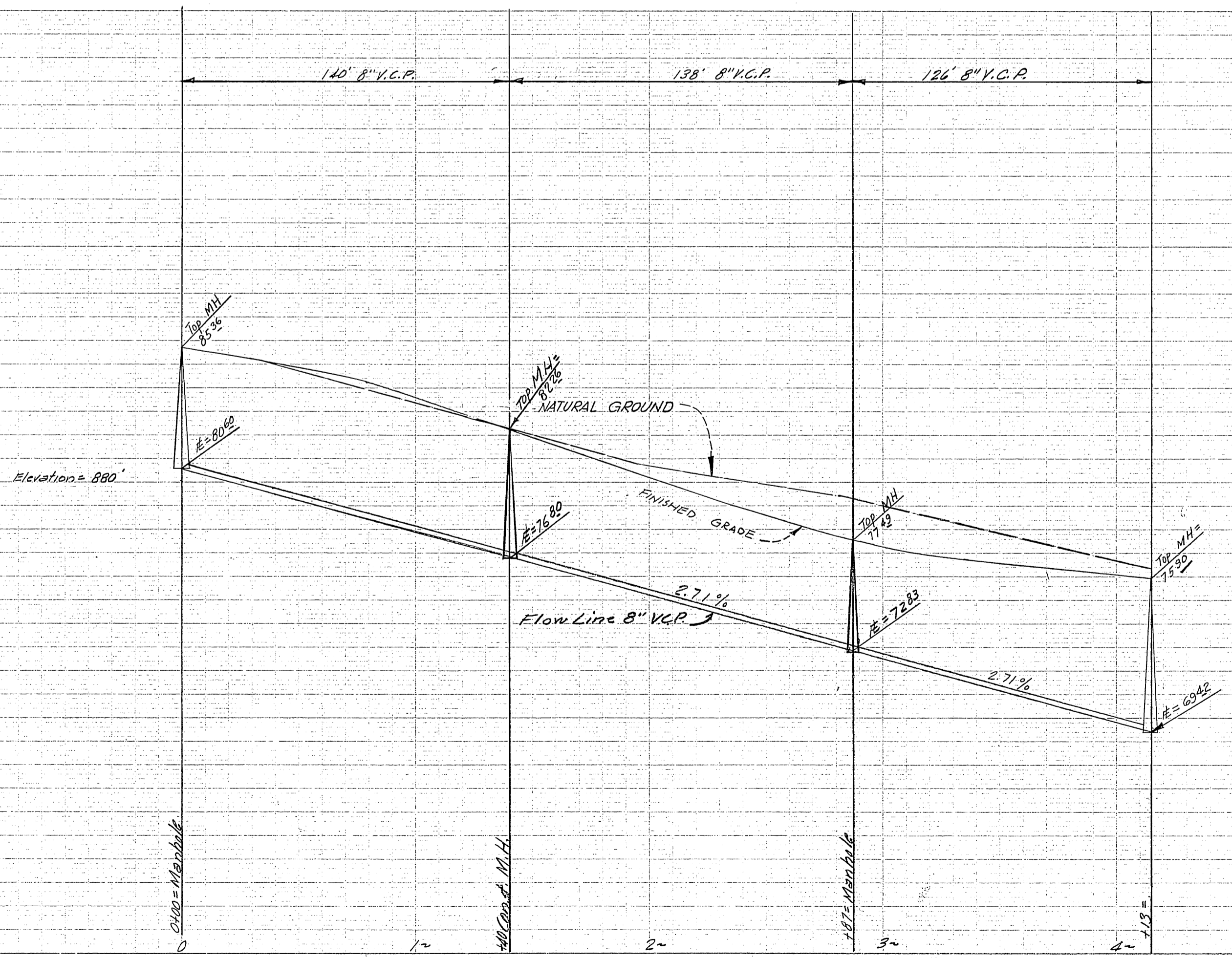


QUANTITIES:
1148' 8" V.C.P.
5 Manholes
23 Wyes
538' 2" VCP (Laterals)
1 Cleanout

#4

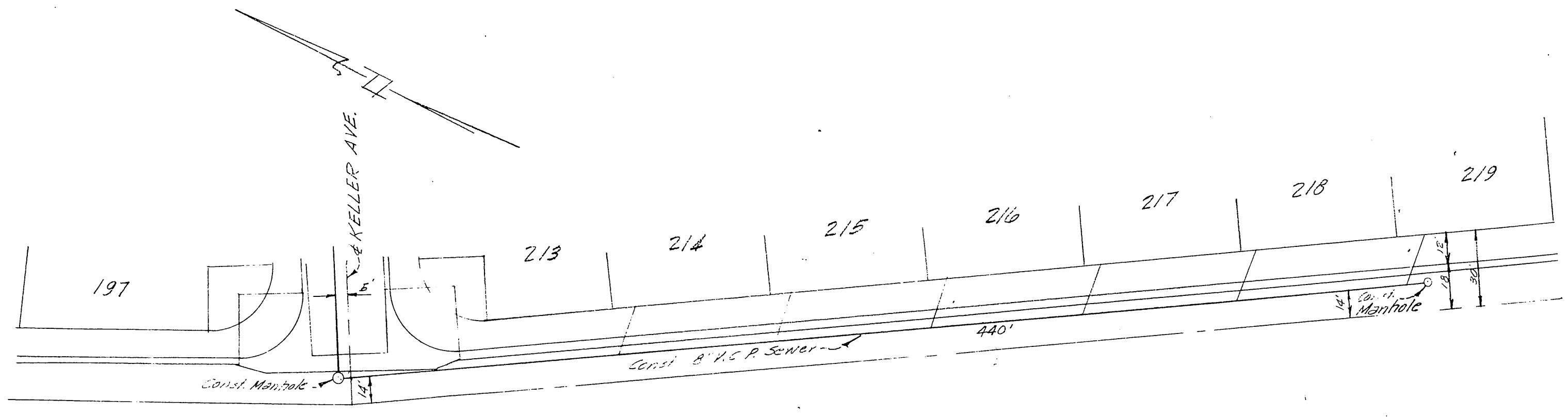
KELLER AVENUE

NICHOLS COURT

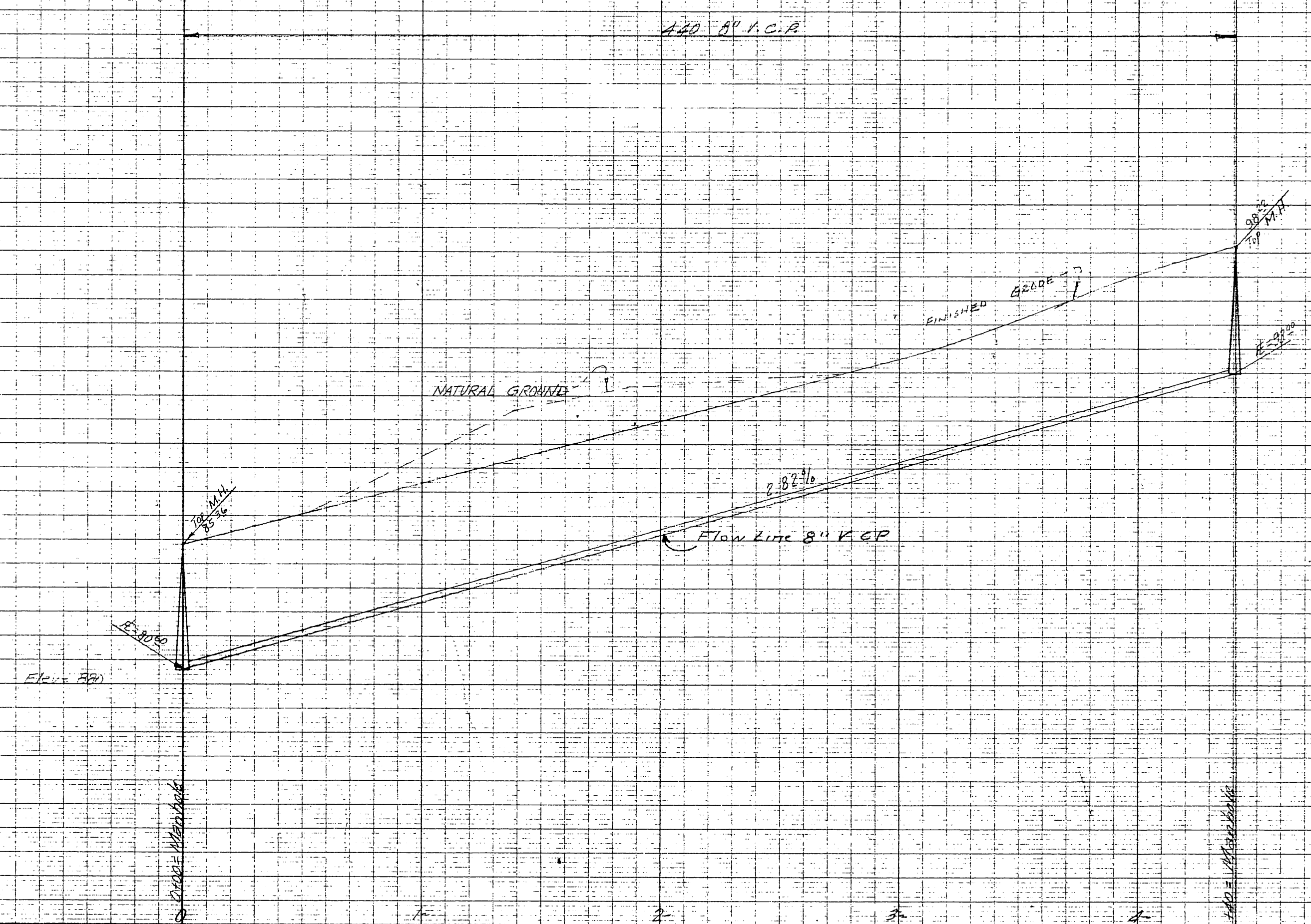


S-331 731-J

File No.	SIERRA DOWNS 5	
Drawn By	SEWER PLANS	
Checked By	CREST AVENUE	
Approval Recommended:	Approved:	Date:
<i>W. R. Maxwell</i>		<i>Oct 1958</i>
W. R. MAXWELL Land Surveying and Construction Layout 350 W. Base Line	L.S. 2788 San Bernardino, Calif.	Drawing No. Sheet 2 of 2
Scale: <i>Horz. 1" = 40', Vert. 1" = 4'</i>	Specification No.:	



CREST AVENUE



MADE IN U.S.A.
CLEARPRINT PAPER CO.
CLEARPRINT PROFILE PLAN PLATE A

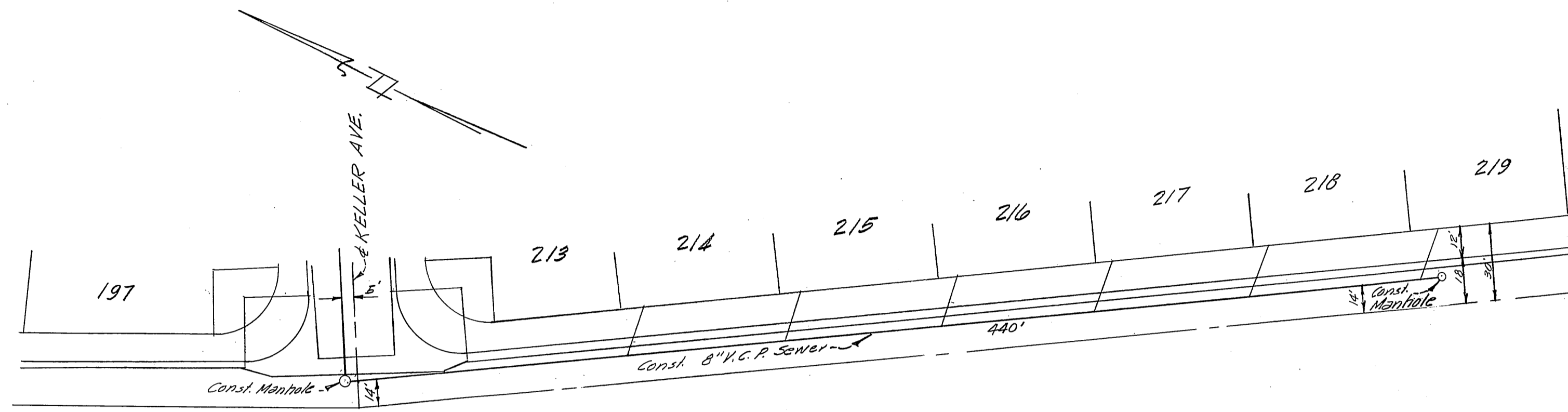
MADE IN U.S.A.
CLEARPRINT PAPER CO.
CLEARPRINT PROFILE PLAN PLATE A

S-331 731-J

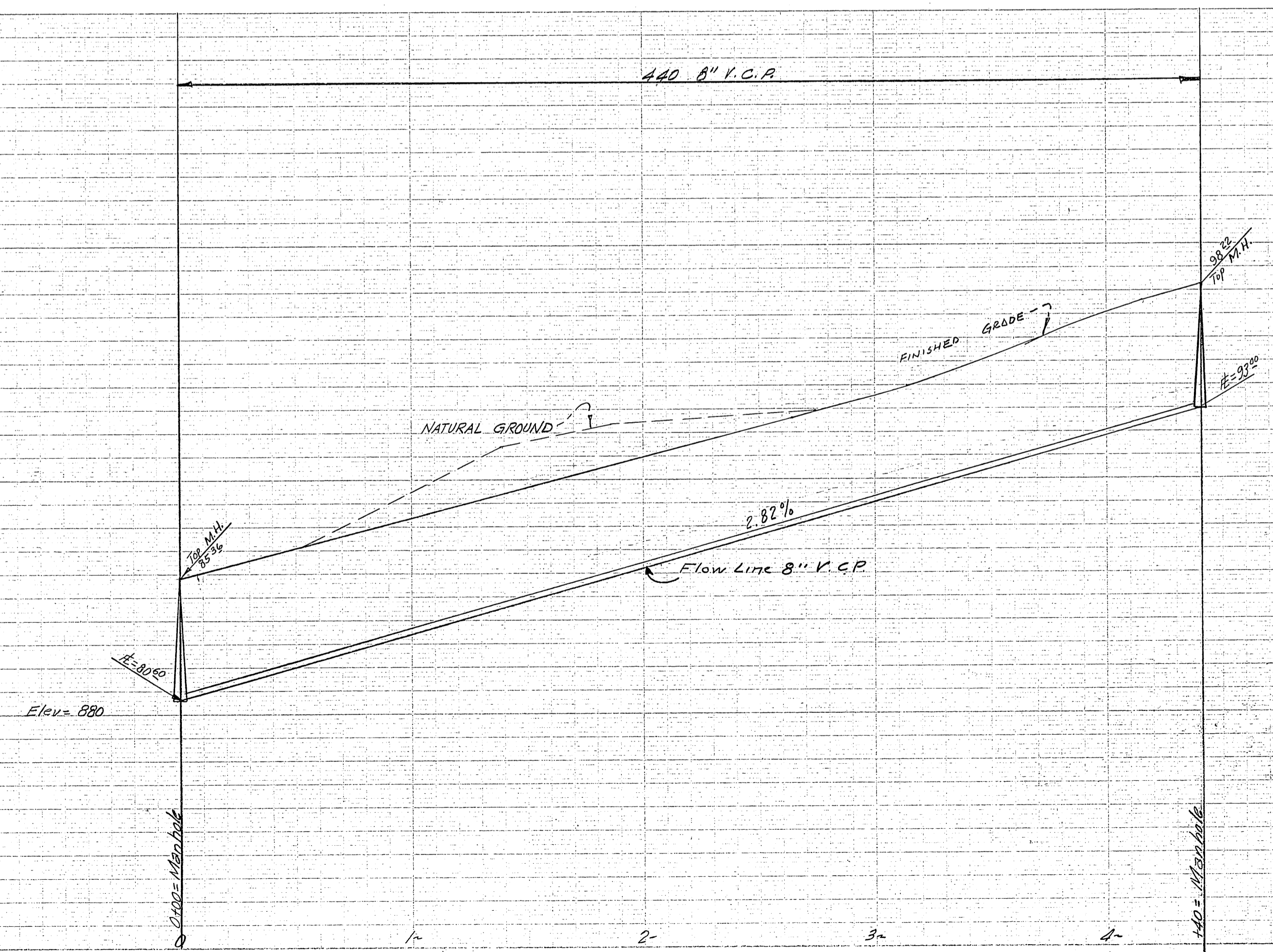
SIERRA DOWNS 5
SEWER PLANS
CREST AVENUE

M. E. Bryant RE 4562
Oct. 1958

Horz. 1" = 40', Vert. 1" = 4'



CREST AVENUE



S-331 731-J

SIERRA DOWNS UNIT NO. 5

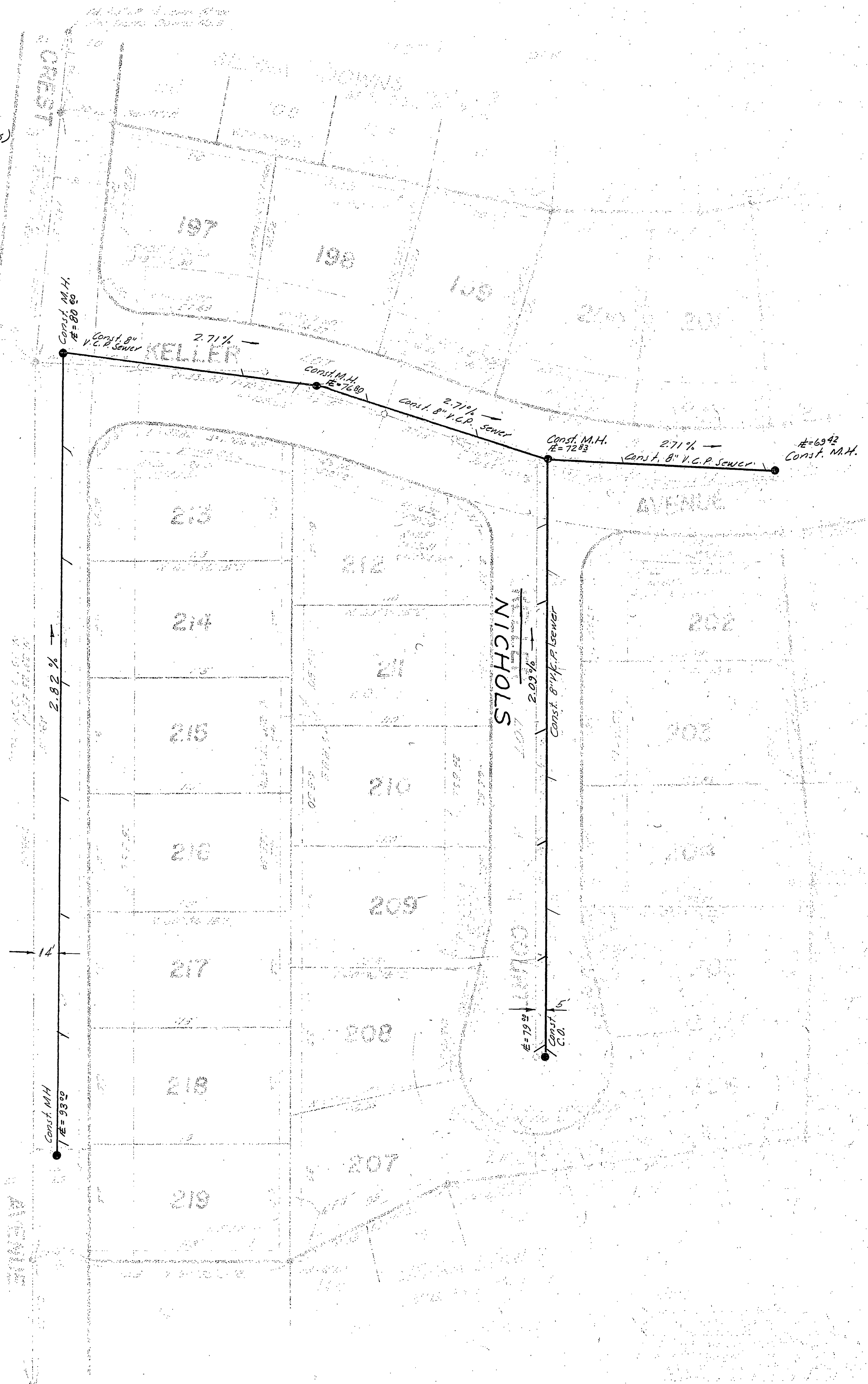
BEING A SUBDIVISION OF A PORTION OF LOTS 1 AND 8, BLOCK 47, AND A PORTION OF LOTS 1, 2, 3, 15 AND 18, BLOCK 36, LA GRANADA TRACT AS RECORDED IN BOOK 12 OF BEING PAGES 42 TO 51, RECORDS OF BERNARD COUNTY, CALIF.

W. M. MERRILL, ENGINEER

SEWER MAP

1917

- QUANTITIES
- 1148' 8" V.C. Pipe
 - 5 Manholes
 - 1 Cleanout
 - 23 Wyes
 - 538' 4" V.C.P. (Laterals)



S-331A
SEWER MAP

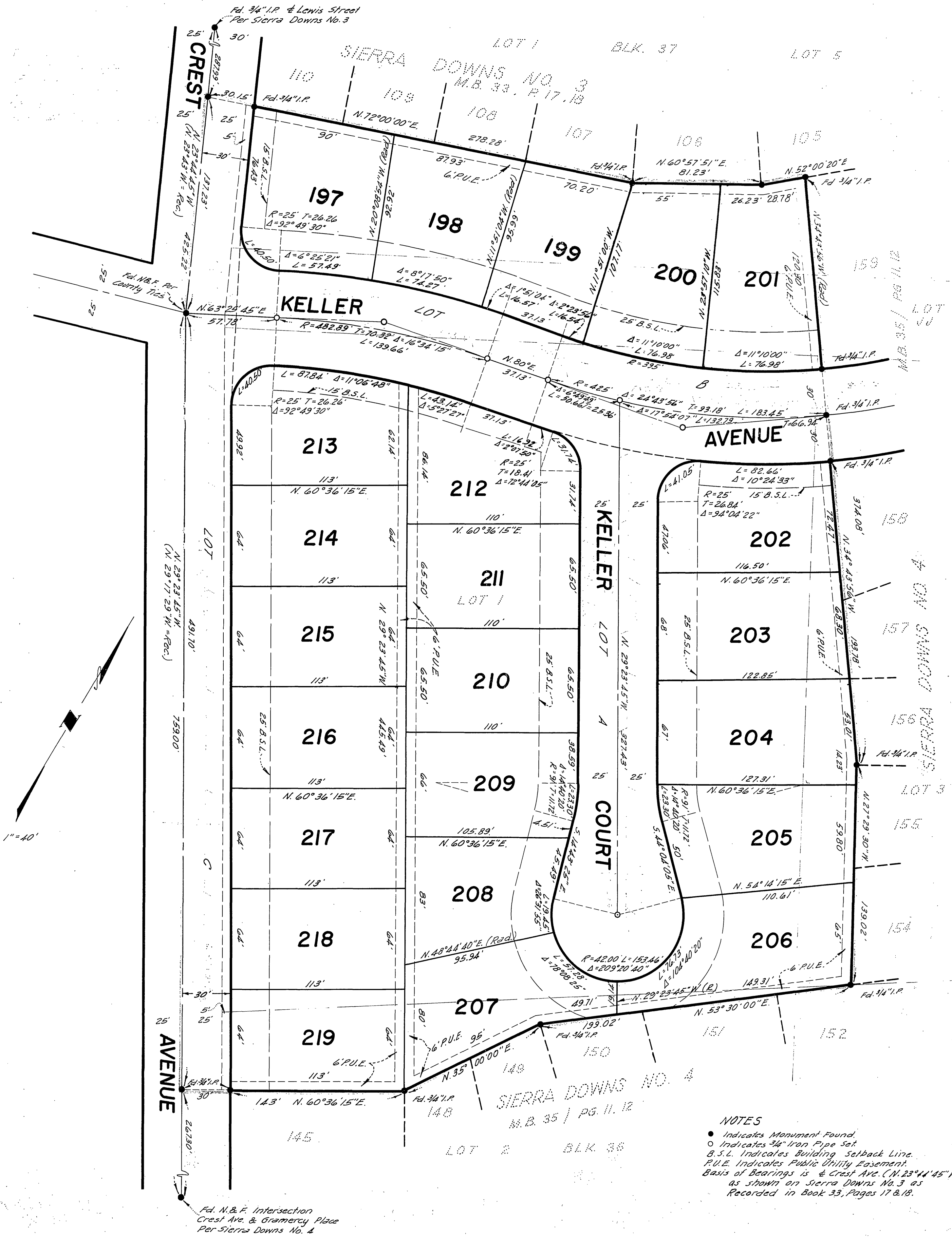
SIERRA DOWNS UNIT NO. 5

BEING A SUBDIVISION OF A PORTION OF LOTS 1 AND 5, BLOCK 37, AND A PORTION OF LOTS 1,2,3,15 AND 16, BLOCK 36, LA GRANADA TRACT AS RECORDED IN BOOK 12 OF MAPS, PAGES 42 TO 51, RECORDS OF RIVERSIDE COUNTY, CALIF.

W.R. MAXWELL · SURVEYOR

AUGUST 1958

SEWER MAP



NOTES

- Indicates Monument Found.
- Indicates 3/4" Iron Pipe Set.
- B.S.L. Indicates Building Setback Line.
- P.U.E. Indicates Public Utility Easement.
- Basis of Bearings is & Crest Ave. (N. 23° 44' 45" N) as shown on Sierra Downs No. 3 as Recorded in Book 33, Pages 17 & 18.

S 331 A