

APPROVED FOR 151.69' SEWER EXTENSION AND MANHOLE
 BY M. Matheis DATE 8-3-62
 DIRECTOR OF PUBLIC WORKS

Form M.H. bottom to receive flow from Jasmine Street and install 8" V.C.P. stub. Flow line elev. 779.30

NOTE:
 As of this date, August 3, 1962
 All sewer appurtenances easterly of Sta. 12+50 are existing.
 This project requires the extension of 151.69 feet of 8" V.C.P. westerly between existing M.H. #4 and proposed M.H. #5 at Jasmine St.

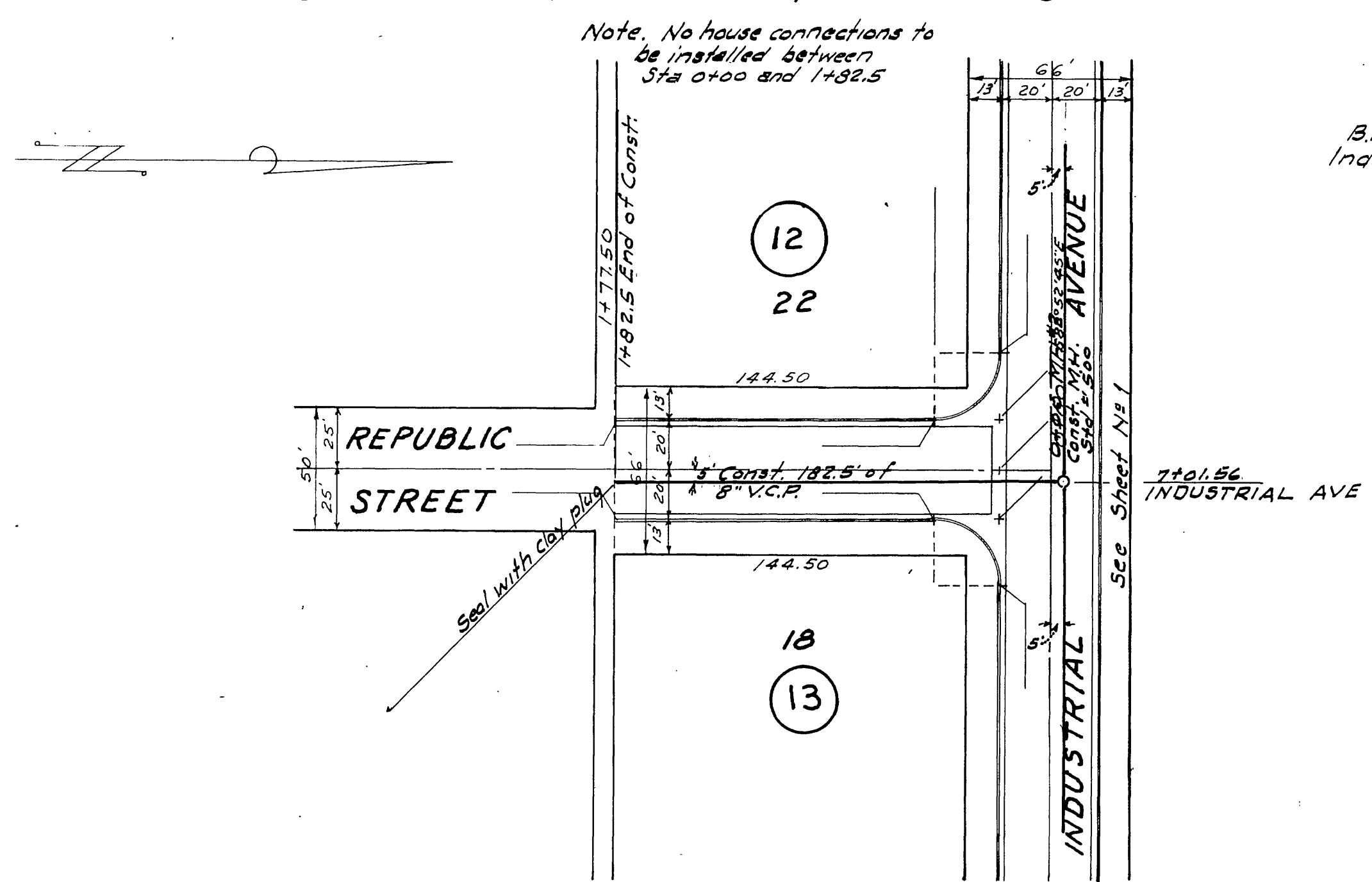
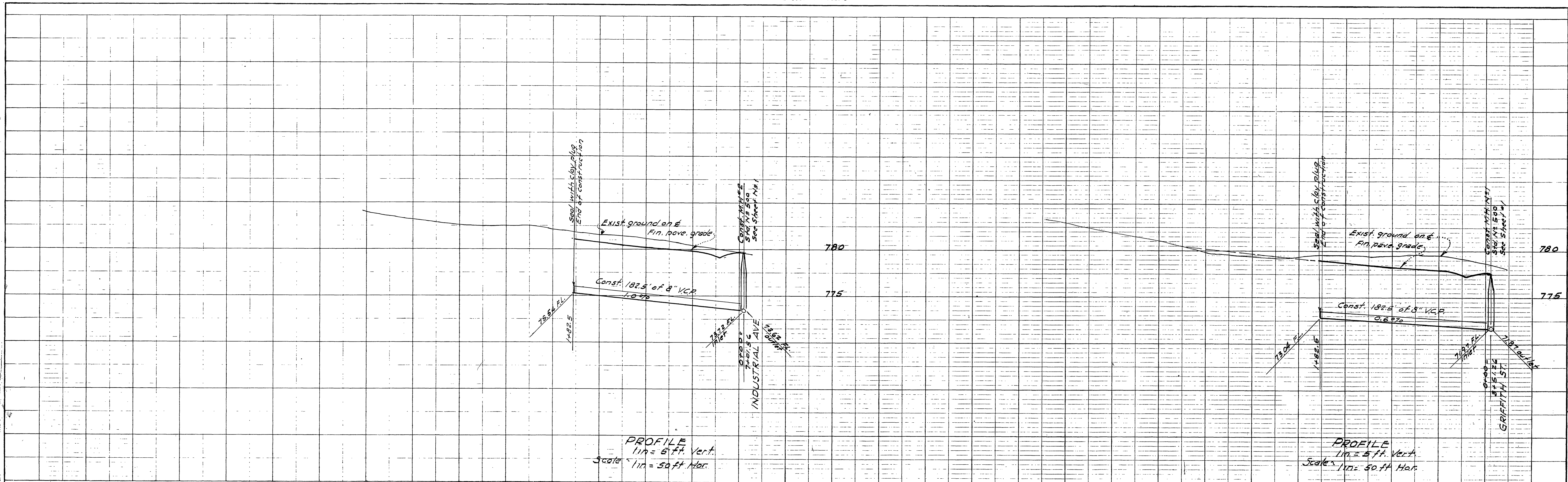
B.M. R.R. Spike in P. Plat. # 16107-J N.E. Cor. Industrial Ave & Fremont St. Elev. 772.10
 Note: All M.H. covers to be set flush with pavement after pavement has been installed.
 All House connections to be located in the field. All construction to be in conformance with Standard Specifications No. 461 City of Riverside.
 Where sewer trench passes under curb, gutter or sidewalk, trench shall be backfilled and tamped to 90% of rel. compaction.
 The contractor is required to take due precautionary measures to protect the utilities or structures shown and any other utilities or structures at the site. It shall be the contractor's responsibility to notify the owners of the utilities or structures concerned before starting work.

PLAN
 Scale 1/4" = 50'

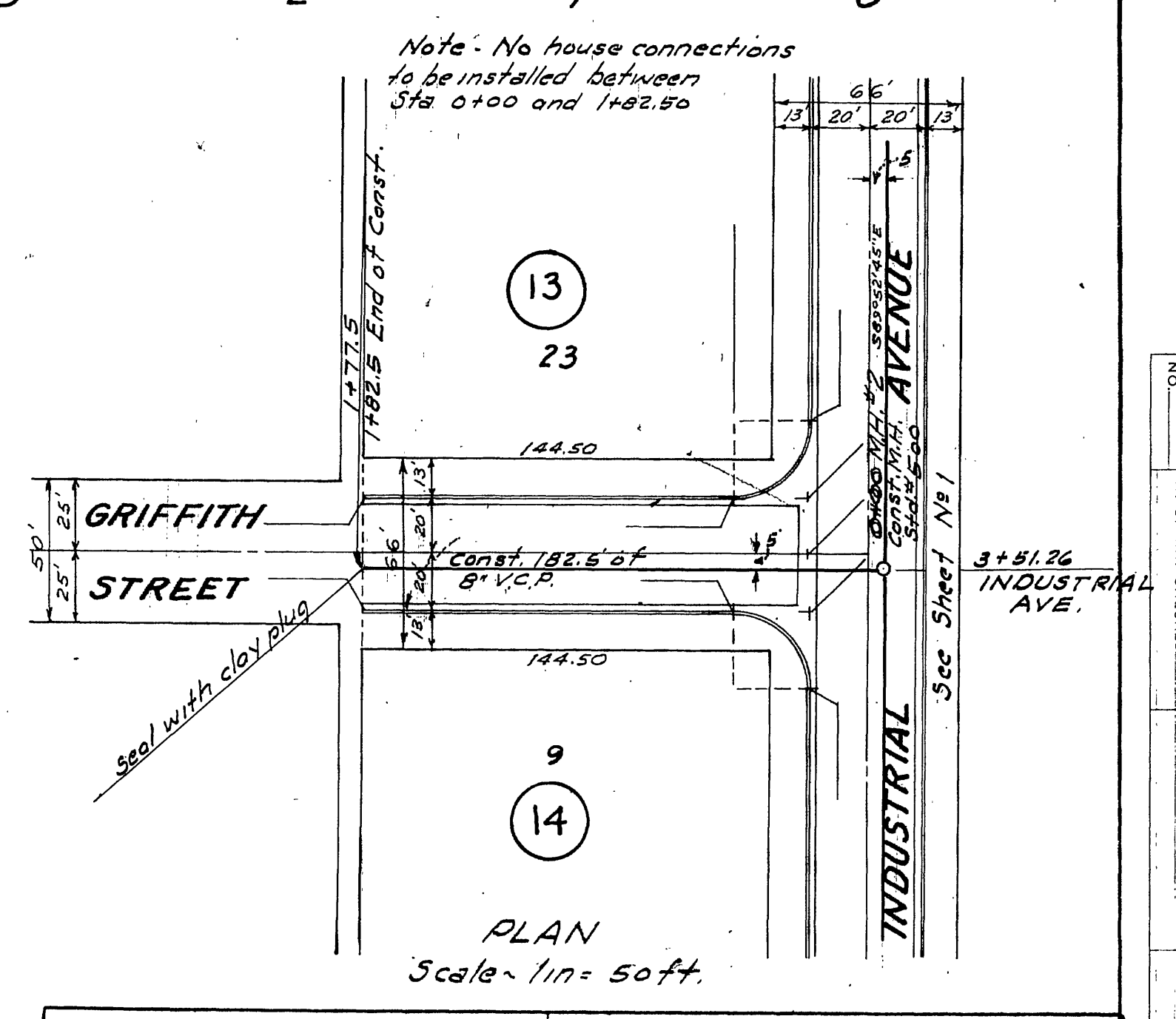
* = As built 7/3/62 RK

MCKEE & CRAWLEY
 SURVEYORS AND ENGINEERS
 Riverside, California
 Approved: George O. Crawley R.E. No. 9483 Date 2-7-62

REVISIONS		CITY OF RIVERSIDE CALIFORNIA DEPARTMENT OF PUBLIC WORKS
MARK	DATE	
Rev. No. 1	9/28/62	RECORD OF SURVEY 646 SEWER, PLAN AND PROFILE OF INDUSTRIAL AVE - FREMONT ST TO JASMINE ST.
Rev. No. 1	Approved: <u>M. Matheis</u> Dir. of Public Works	
DESIGNED BY	CHECKED BY D.R.B. <u>wdg</u>	APPROVED BY <u>M. Matheis</u> DIRECTOR OF PUBLIC WORKS
DRAWN BY		DATE 2-28-62
RECOMMENDED BY <u>M. Matheis</u>	ASSISTANT CITY ENGINEER	SHEET 1 OF 3



B.M. R.R. Spike in P. Pole # 15107-J N.E. Cor. Industrial Ave and Fremont St. Elev. 777.10



REVISIONS			CITY OF RIVERSIDE CALIFORNIA DEPARTMENT OF PUBLIC WORKS
MARK	DATE	DESCRIPTION	
			RECORD OF SURVEY 646 SEWER PLANS AND PROFILES - GRIFFITH ST. AND REPUBLIC ST. INDUSTRIAL AVE SLY

McKEE & CRAWLEY
 SURVEYORS AND ENGINEERS
 Riverside California
 Approved *George O. Crawley* RE. 9458 Date, 2-7-62

DESIGNED BY
 DRAWN BY
 RECOMMENDED BY
 ASSISTANT CITY ENGINEER

CHECKED BY D.R.B.
 W.D.S.

APPROVED BY
 DIRECTOR OF PUBLIC WORKS

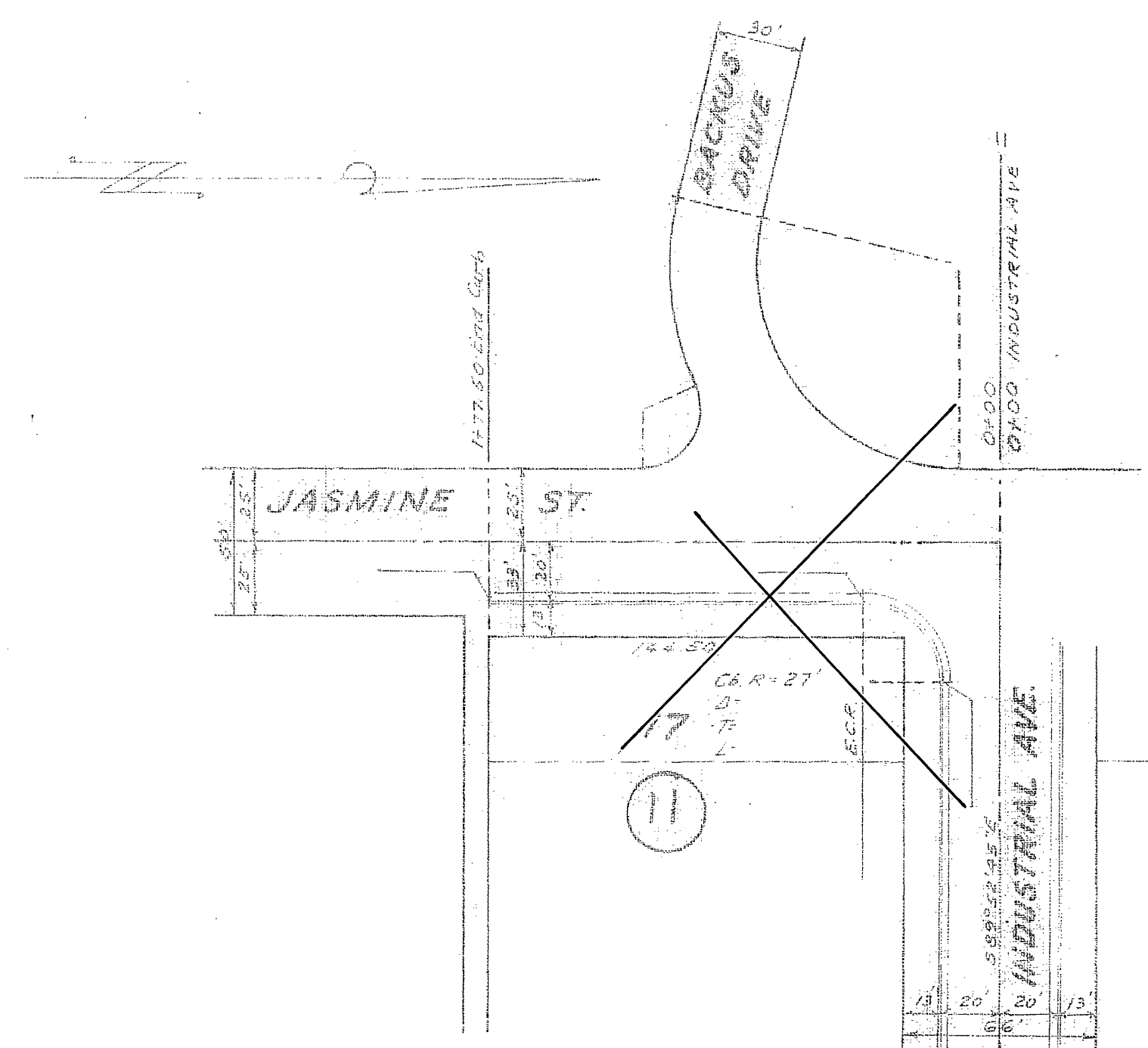
S.335
 DATE 2-27-62
 SHEET 2 OF 3

PROFILE	SURVEYED	DATE
NOTE BOOK	GRADES CHECKED	
NO.	B.M. NOTED	
	STRUCTURE NOTATIONS CHECKED	

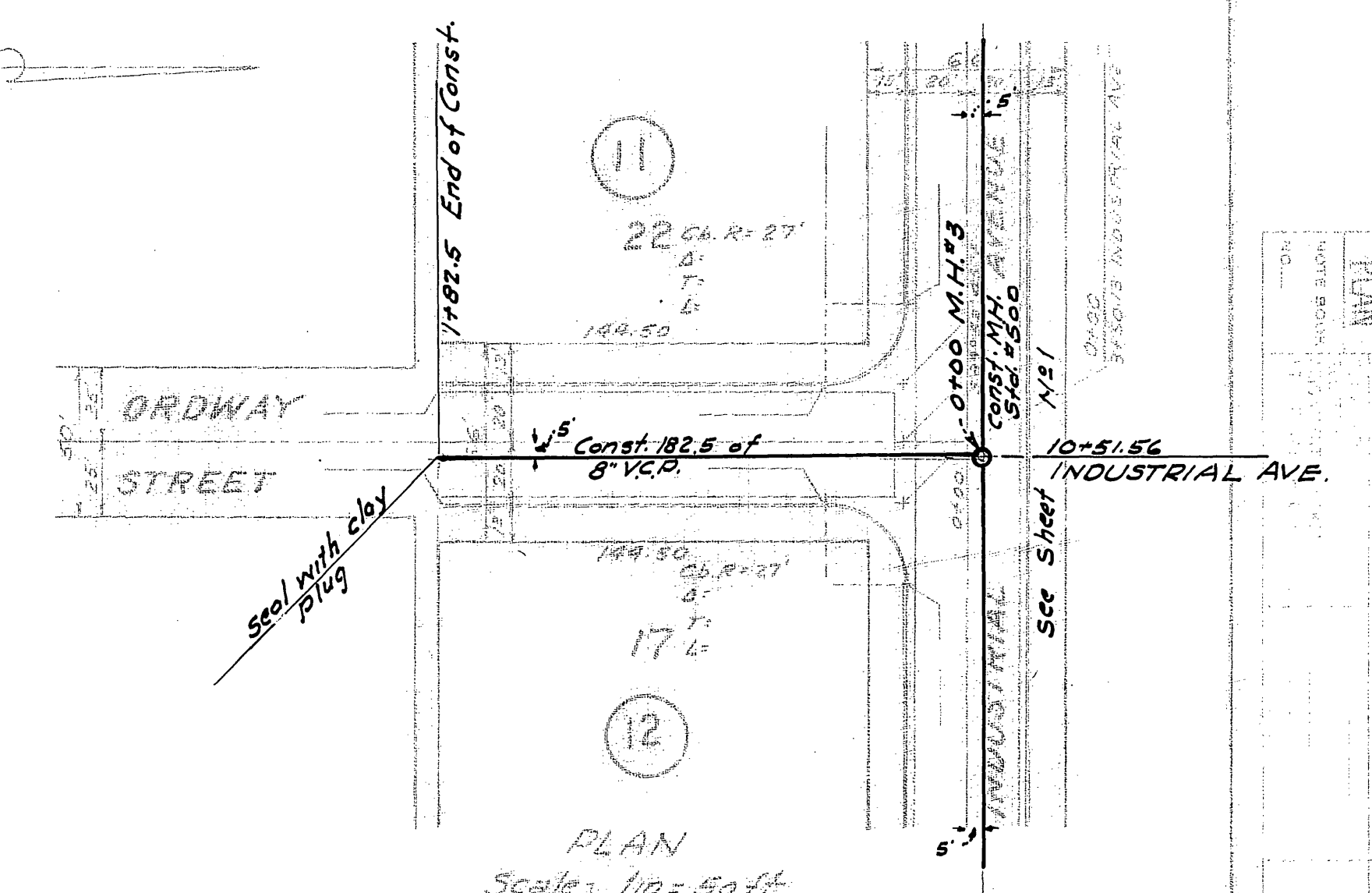
PLAN	SURVEYED	DATE
NOTE BOOK	NOTED CHECKED	
NO.	RI. OF WAY CHECKED	

PROFILE
1 in = 5 ft Vert
Scale 1 in = 50 ft Hor

PROFILE
1 in = 5 ft Vert
Scale 1 in = 50 ft Hor



PLAN
Scale 1 in = 50 ft



PLAN
Scale 1 in = 50 ft

REVISIONS		CITY OF RIVERSIDE CALIFORNIA DEPARTMENT OF PUBLIC WORKS	
MARK	DATE	DESCRIPTION	
Rev #1	5/28/62	Changed grade.	RECORD OF SURVEY 646
		George O. Crawley R.E. N° 9455	SEWER PLANS AND PROFILES ORDWAY ST. AND JASMINE ST FROM INDUSTRIAL AVE. SLY
Rev #1	Approved:	<i>Jim Matlock</i> Dir. of Public Works	APPROVED BY <i>Jim Matlock</i> DIRECTOR OF PUBLIC WORKS
DESIGNED BY	DRAWN BY	CHECKED BY D.R.B. WJG	APPROVED BY <i>Jim Matlock</i> DIRECTOR OF PUBLIC WORKS
RECOMMENDED BY		ASSISTANT CITY ENGINEER	DATE 2-28-62

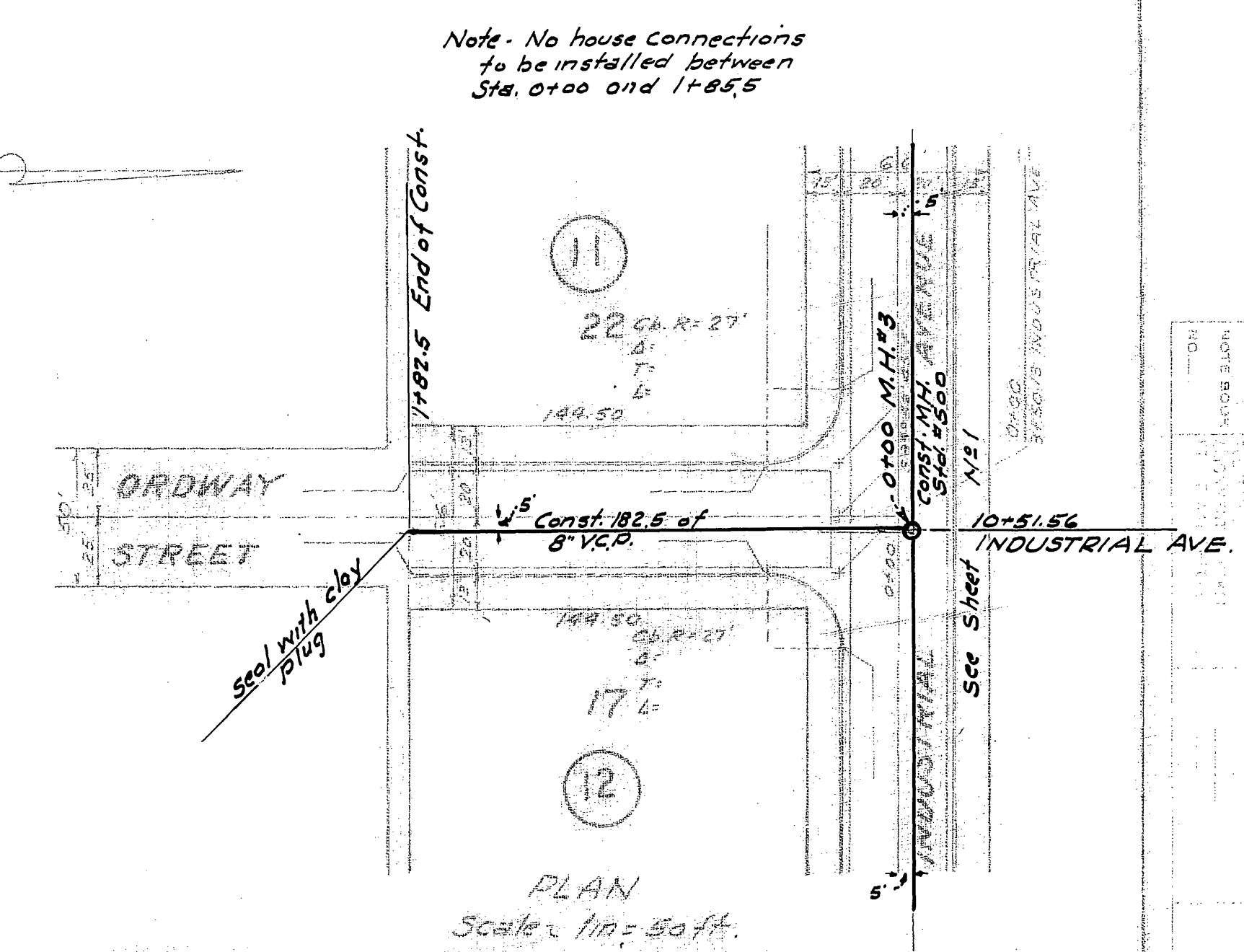
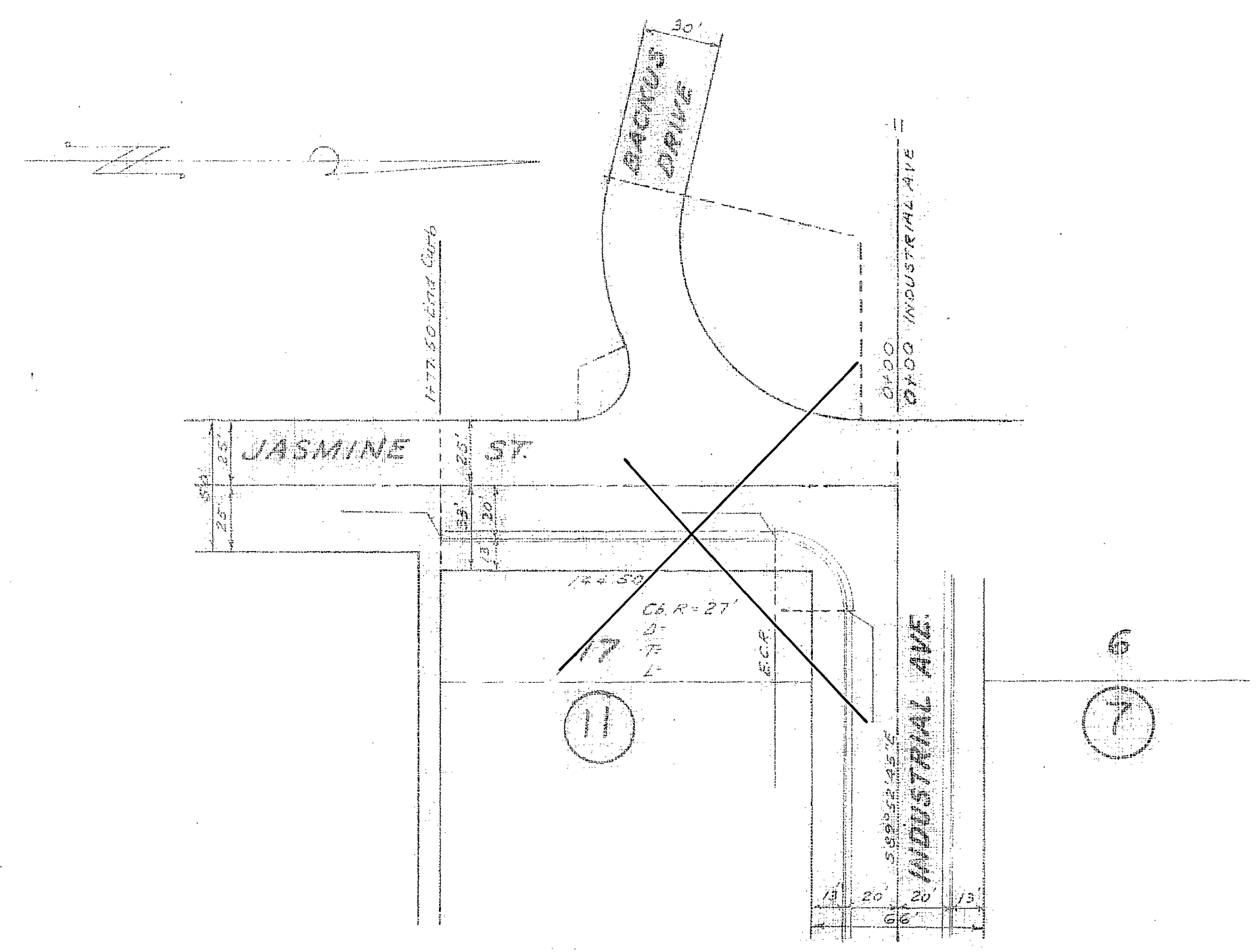
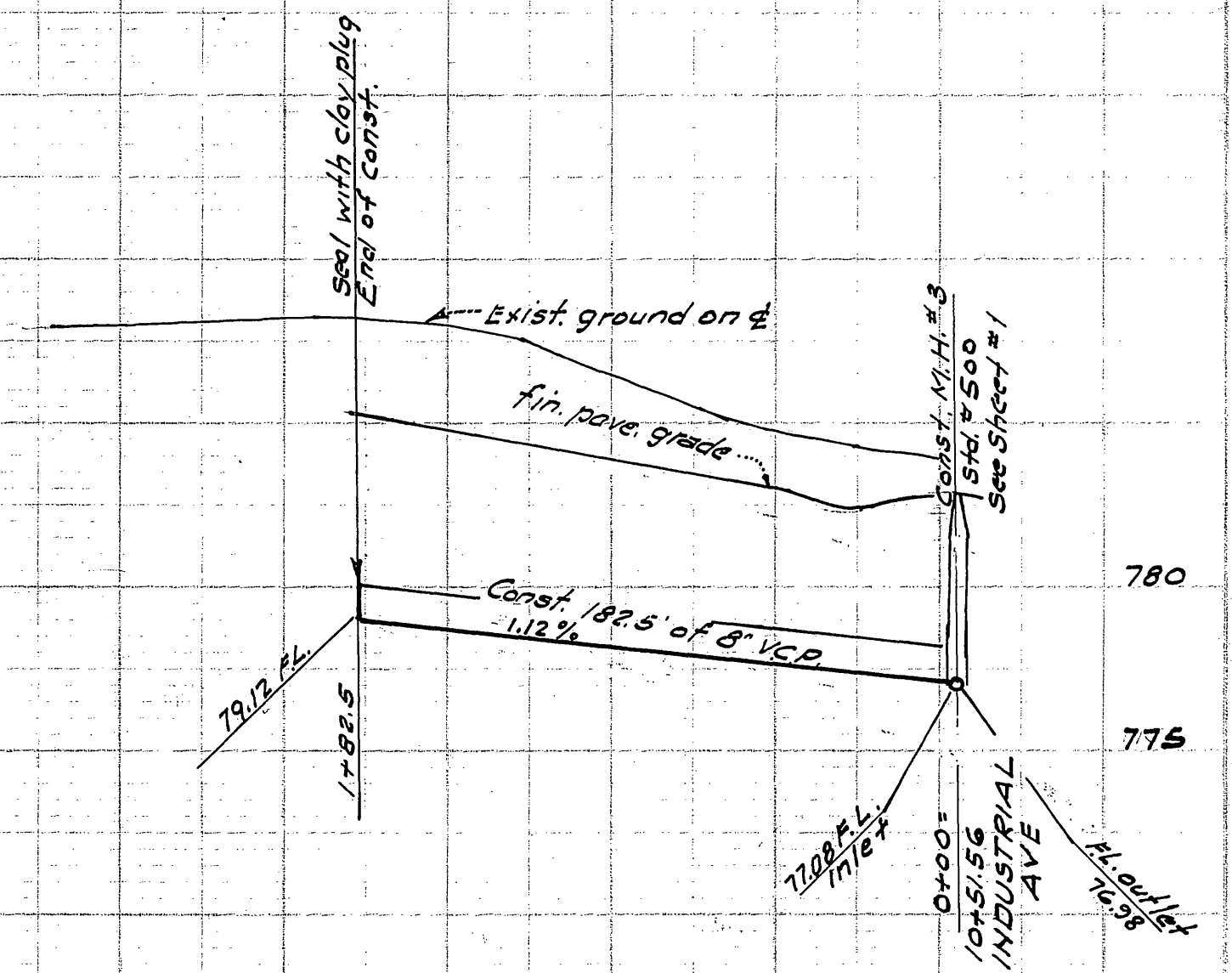
McKEE & CRAWLEY
SURVEYORS AND ENGINEERS
Riverside California
Approved George O. Crawley RE 9455 Date 2-7-62

S-335
SHEET 3 OF 3

PLAN
DATE BOOK
NO.

PROFILE
 1 in = 5 ft Vert
 3 scale 1 in = 50 ft Hor

PROFILE
 1 in = 5 ft Vert
 3 scale 1 in = 50 ft Hor



PLAN
 Scale 1 in = 50 ft.

PLAN
 Scale 1 in = 50 ft.

Note: No house connections to be installed between Sta. 0+00 and 1+85.5

REVISIONS		CITY OF RIVERSIDE, CALIFORNIA DEPARTMENT OF PUBLIC WORKS	
MARK	DATE	DESCRIPTION	
Rev. #1	5/28/62	Changed grade. George O. Crawley R.E. N° 9455	RECORD OF SURVEY 646 SEWER PLANS AND PROFILES ORDWAY ST. AND JASMINE ST. FROM INDUSTRIAL AVE. SLY
Rev. #1	Approved:	<i>[Signature]</i> Dir. of Public Works	
DESIGNED BY	CHECKED BY D.R.B.	APPROVED BY	
DRAWN BY	<i>[Signature]</i>	<i>[Signature]</i>	S-335
RECOMMENDED BY		DIRECTOR OF PUBLIC WORKS	
		ASSISTANT CITY ENGINEER	DATE 2-28-62 SHEET 3 OF 3

McKEE & CRAWLEY
 SURVEYORS AND ENGINEERS
 Riverside, California
 Approved George O. Crawley R.E. 9455 Date 2-7-62