

SIERRA DOWNS UNIT NO. 6

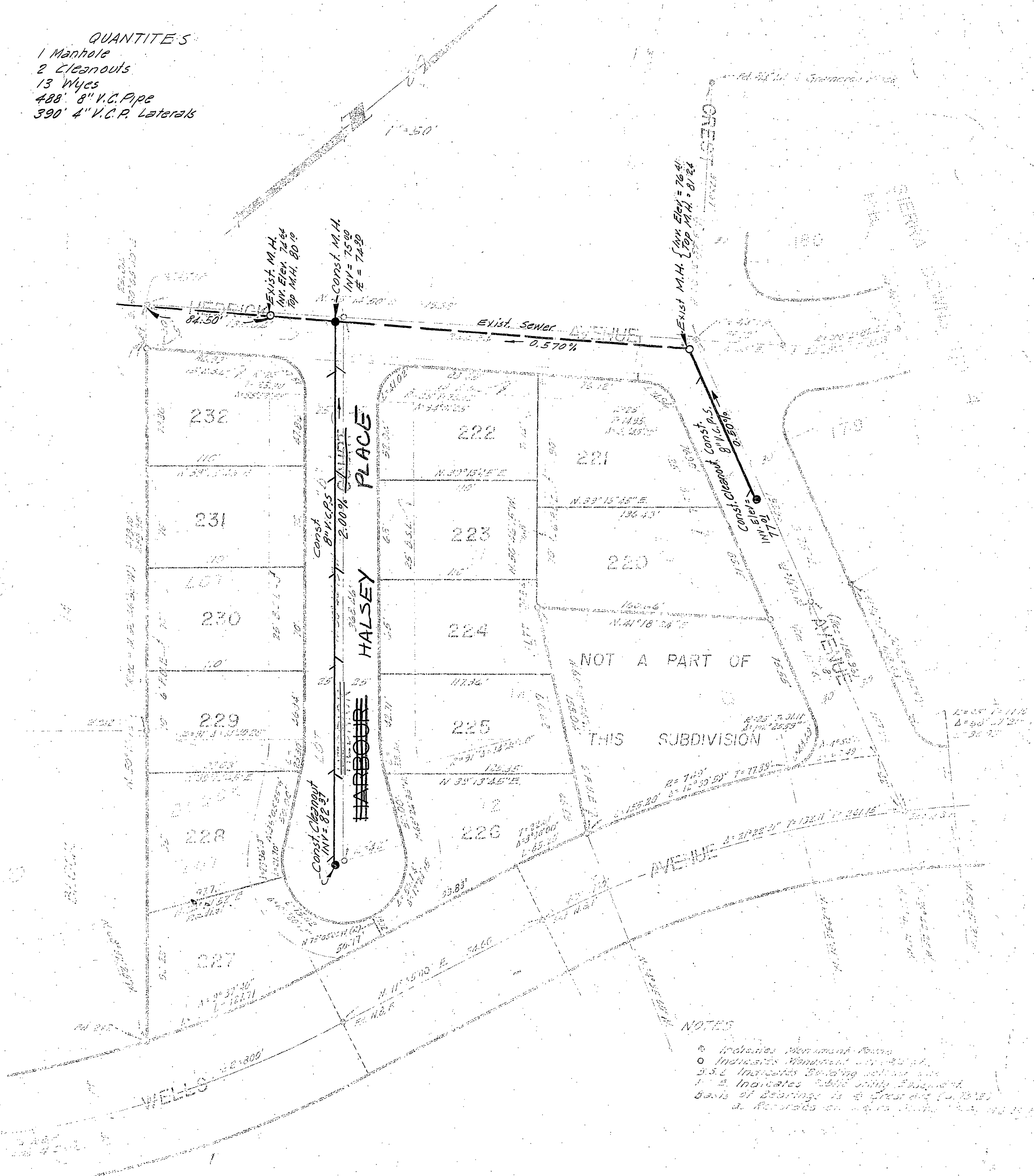
BEING A SUBDIVISION OF LOT 11 AND A PORTION OF LOTS 12 AND 13, BLOCK 14,
LA GRANA TRACT AS RECORDED IN BOOK 12 OF MAPS, PAGES 12 TO 15,
RECORDS OF RIVERSIDE COUNTY, CALIFORNIA.

W.R. MAXWELL - SURVEYOR

SEWER MAP

AUGUST 1958

- QUANTITIES
 1 Manhole
 2 Cleanouts
 13 Wyes
 488' 8" V.C. Pipe
 390' 4" V.C.P. Laterals



NOTES

- ⊙ Indicates Manhole
- Indicates Cleanout
- Indicates Sewer Line
- Indicates Public Utility Easement
- Angle of Bearing is as Shown (N. 10° E.)
- Distances are in Feet

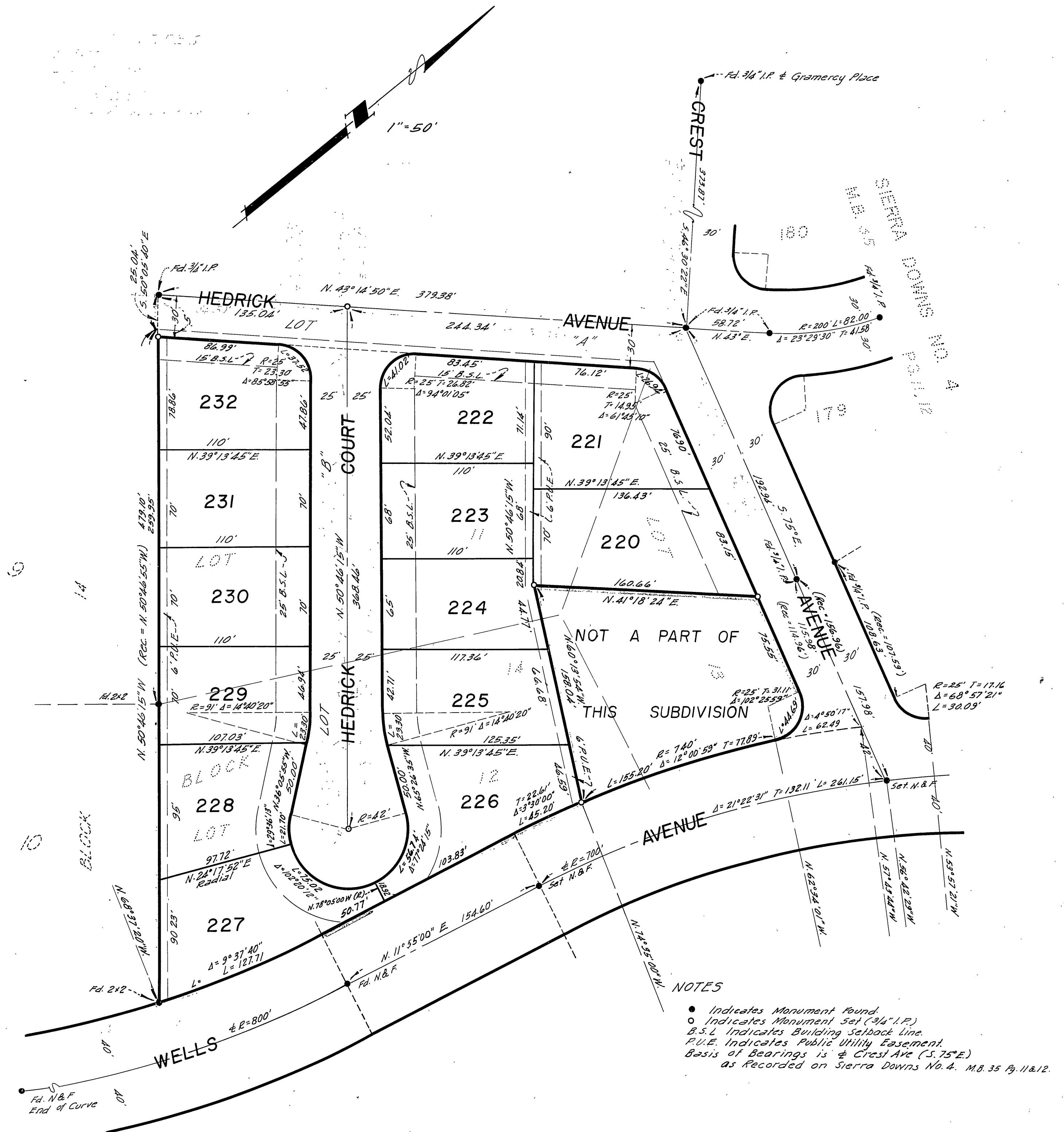
S-338A

SIERRA DOWNS UNIT NO. 6

BEING A SUBDIVISION OF LOT 11 AND A PORTION OF LOTS 12 AND 13, BLOCK 14, LA GRANADA TRACT AS RECORDED IN BOOK 12 OF MAPS, PAGES 42 TO 51, RECORDS OF RIVERSIDE COUNTY, CALIFORNIA.

W.R. MAXWELL · SURVEYOR

AUGUST 1958



- NOTES
- Indicates Monument Found.
 - Indicates Monument Set (3/4" I.P.)
 - B.S.L. Indicates Building Setback Line.
 - P.U.E. Indicates Public Utility Easement.
 - Basis of Bearings is \pm Crest Ave (S. 75° E.) as Recorded on Sierra Downs No. 4, M.B. 35 Pg. 11 & 12.

S-338A