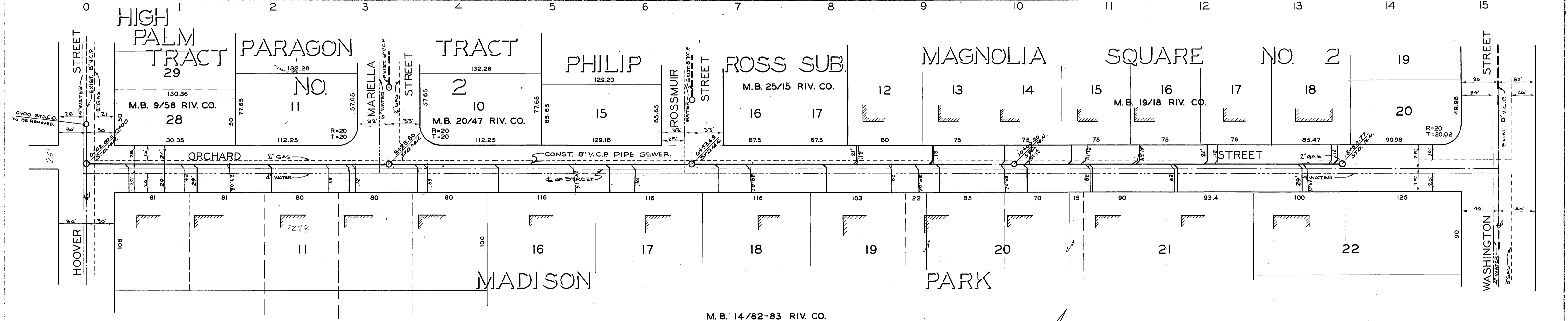


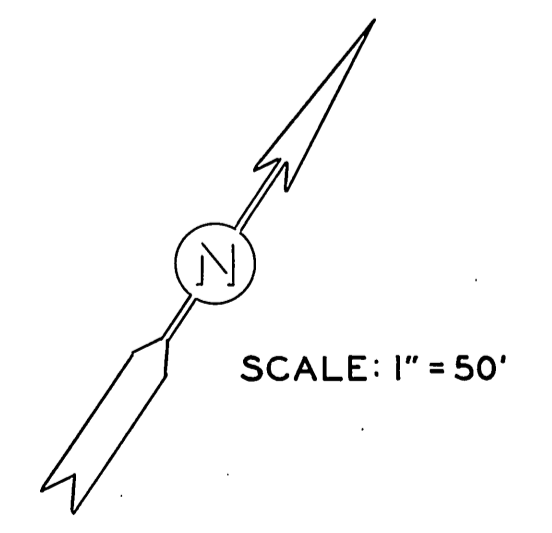
SCALE: HOR. 1"=50'
 VERT. 1"=5'

F.B. 593-15
 " 577-36

B.M. ELEV. 839.74 P.K. NAIL IN W. CURB
 HOOVER ON W.P.L. ORCHARD EXTENDED.



NOTE:
 LAY NO PIPE UNTIL
 ELEVATION OF C.O.
 HAS BEEN CHECKED.



REVISIONS		CITY OF RIVERSIDE, CALIFORNIA DEPARTMENT OF PUBLIC WORKS
MARK	DATE	

DRAWN BY: <i>Lee S. Whiston</i> CHECKED BY: <i>Tom Martine</i> DATE: <i>May 16, 1936</i>	5-34 1 1
--	--------------------

PROFILE	SUBMITTED	DATE

PLAN	SUBMITTED	DATE