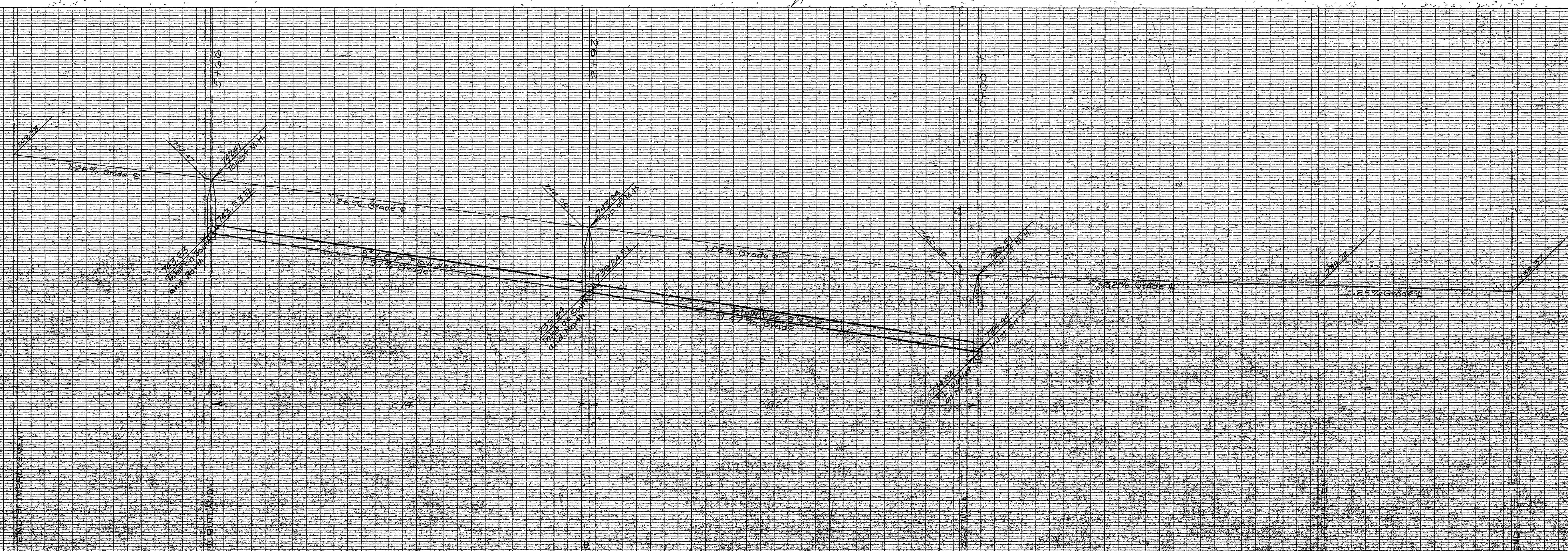
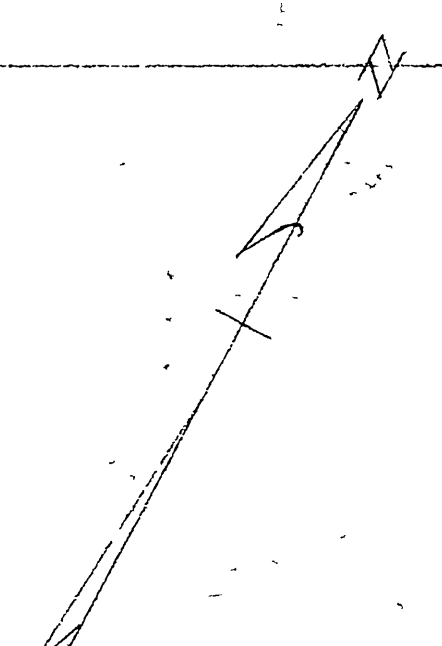


Note: Curves on corner lots have common data  
 $\Delta = 90^\circ$   
 $R = 20'$   
 $T = 20'$   
 $L = 31.42'$

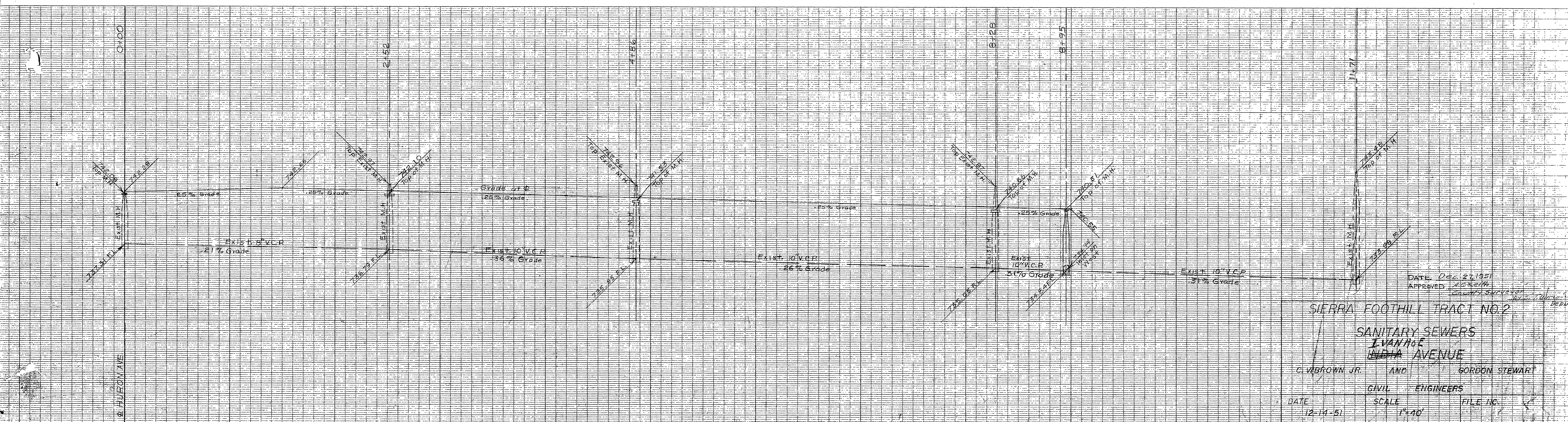
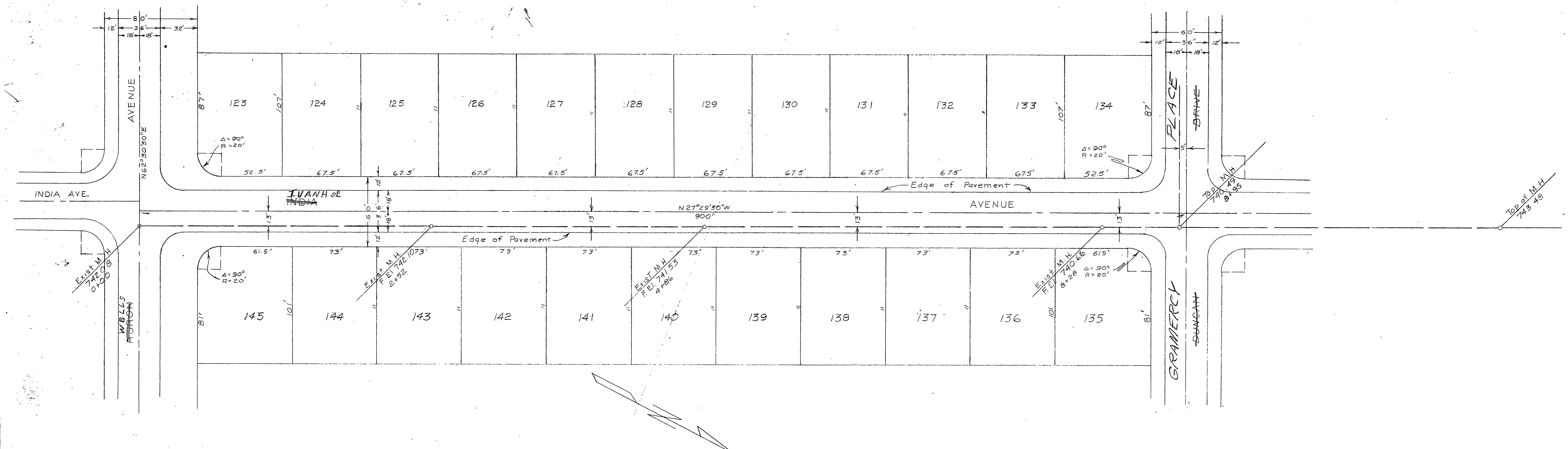


NOTE: 8" M.P. Pipe used for Manhole  
 Velocity of 4.0 ft/sec. and 2.5 ft/sec. for 12" and 18" Pipes  
 DATE: Dec. 27, 1951  
 APPROVED: *[Signature]*  
 COUNTY ENGINEER

SIERRA FOOTHILL TRACT NO. 2  
 SANITARY SEWERS  
 GRAMERCY (E)  
 DUNCAN DRIVE

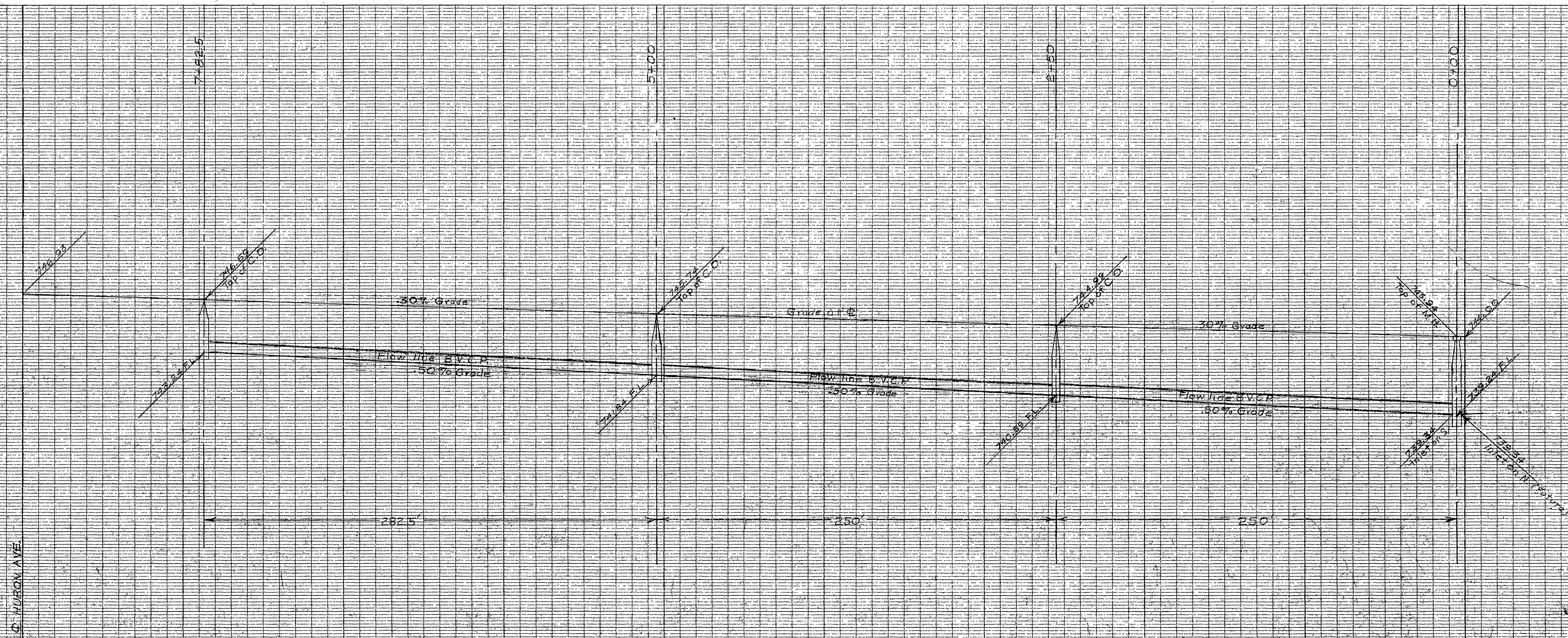
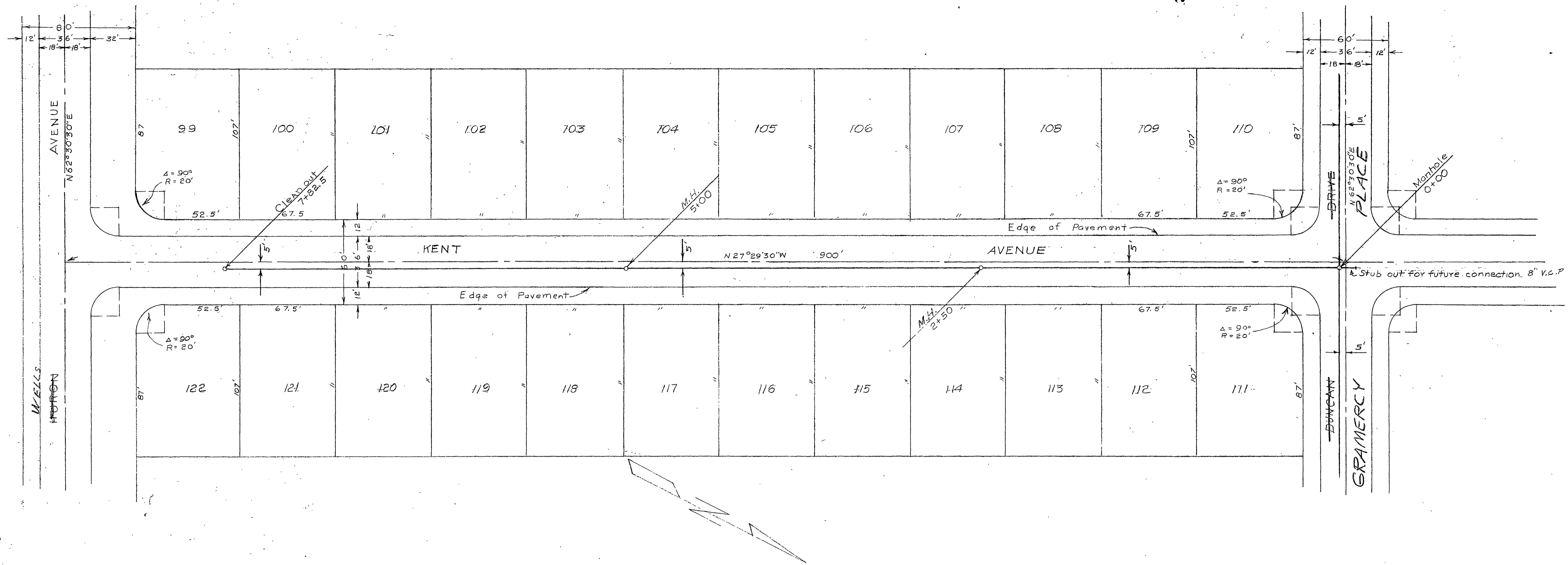
CIVIL ENGINEER  
 SCALE: 1" = 40'

S-341  
 8/6-1



DATE Dec. 27, 1951  
 APPROVED [Signature]  
 CIVIL ENGINEERS  
 SIERRA FOOTHILL TRACT NO. 2  
 SANITARY SEWERS  
 IVANHOE AVENUE  
 C. VIBROWN JR. AND GORDON STEWART  
 CIVIL ENGINEERS  
 DATE 12-11-51 SCALE 1"=40' FILE NO.

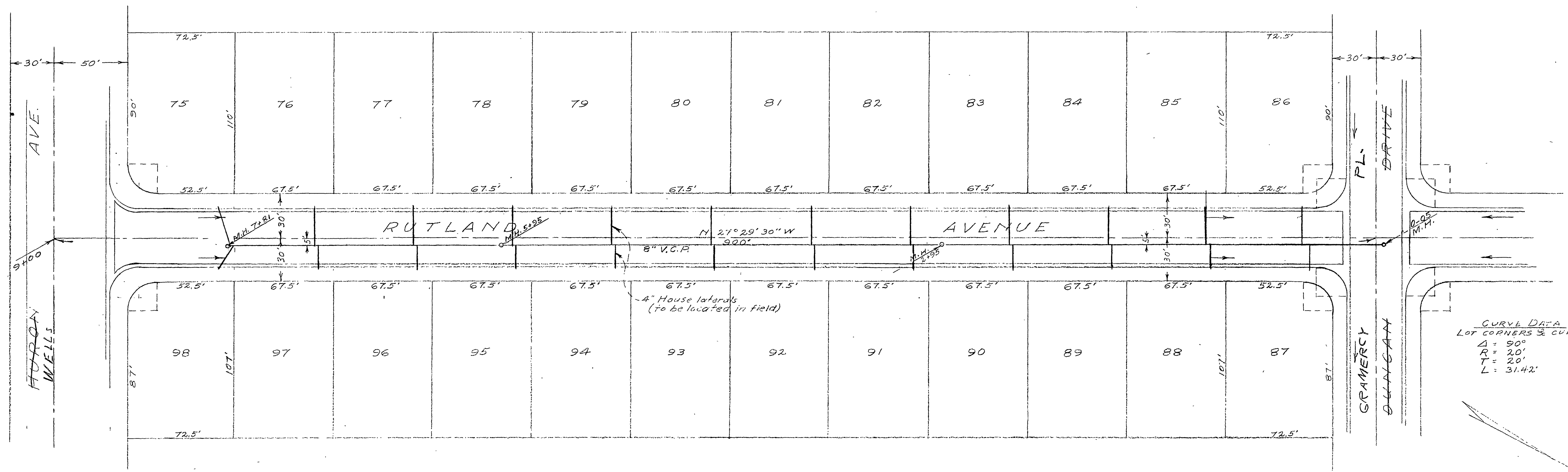
S-341  
 Sh. 2



DATE DEC 27, 1951  
 APPROVED ASG. KENTON  
 COUNTY Surveyor  
 by K. F. Gandy  
 Deputy

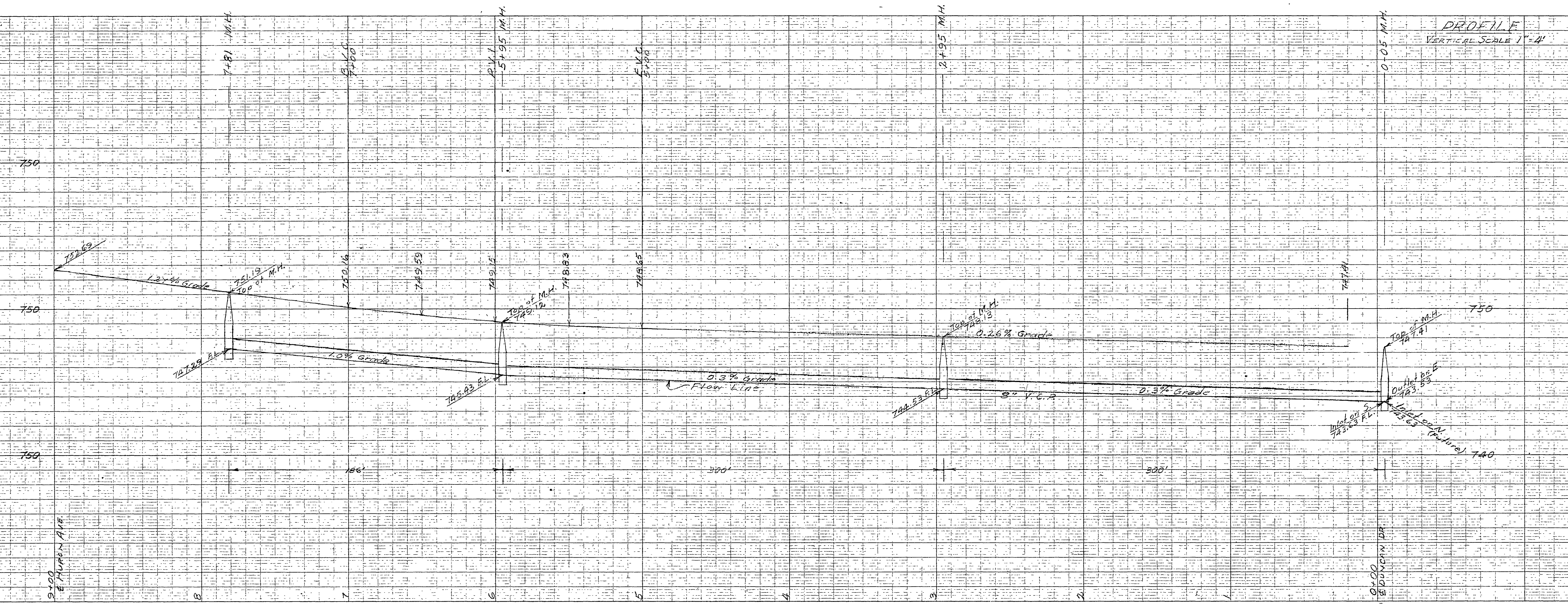
SIERRA FOOTHILL TRACT NO. 2  
 SANITARY SEWERS  
 KENT AVENUE

CIVIL ENGINEERS  
 SCALE 1" = 40'  
 DATE 12-14-51  
 FILE NO.



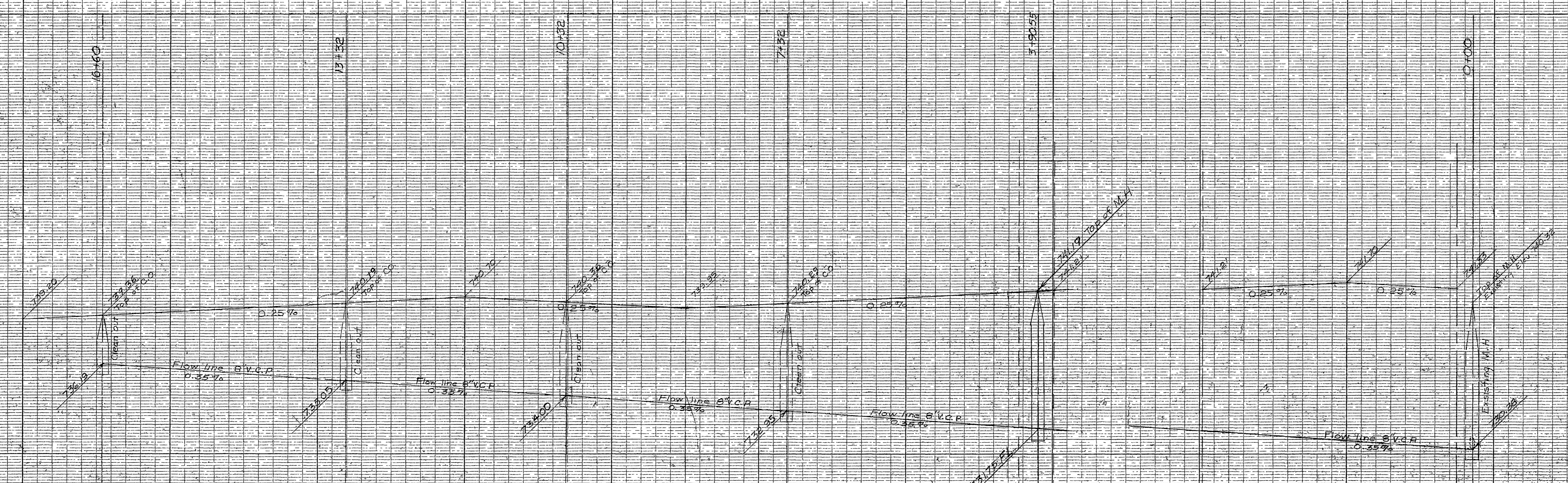
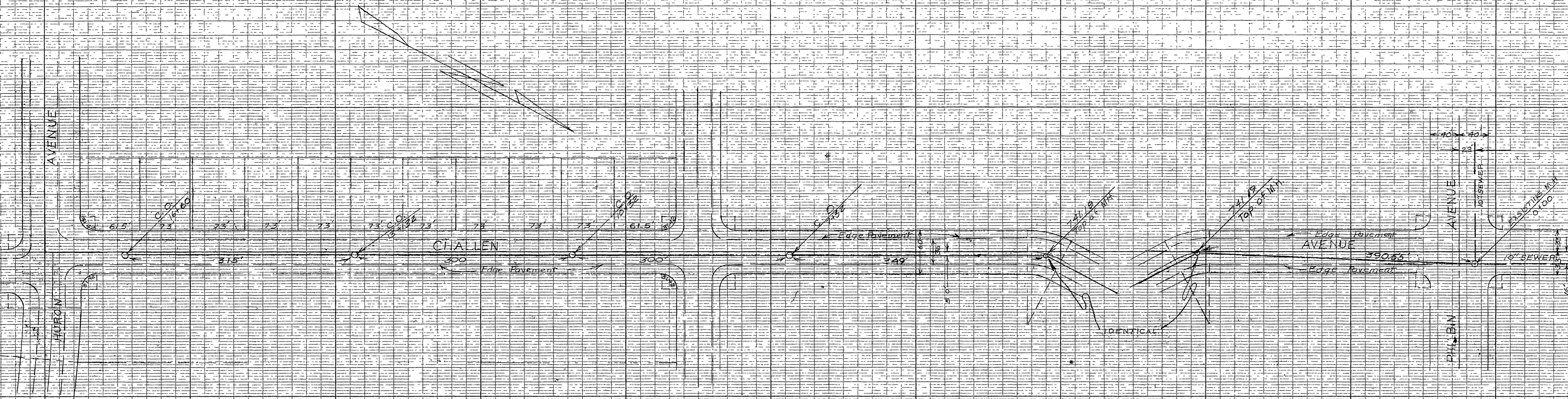
CURVE DATA  
 LOT CORNERS & CURBS  
 A = 90°  
 R = 20'  
 T = 20'  
 L = 31.42'

PLAN  
 SCALE 1"=40'



SIERRA FOOTHILL TRACT NO 2  
 SANITARY SEWERS  
 RUTLAND AVENUE  
 ALBERT A. WEBB ASSOCIATES RIVERSIDE, CALIF.  
 CIVIL ENGINEERS  
 DATE Dec. 18, 1951 SCALE 1"=40' FILE NO.

S-341  
 Sh. 4



APPROVED BY *Gordon Stewart*  
 CHIEF OF PLUMBING DIVISION

SILVER FOOTHILL TRACT NO. 2  
 SANITARY SEWERS  
 CHALLEN AVENUE

G.V. BROWN JR. GORDON STEWART  
 CIVIL ENGINEERS

DATE 11-12-51 SCALE 1"=80' FILE NO.

S-341  
 Sh. 5

STANDARD  
 1/2" x 1/2" x 3/16"  
 1/2" x 1/2" x 3/16"  
 1/2" x 1/2" x 3/16"

KEPNER & EBER CO.  
 NEW YORK

STANDARD  
 1/2" x 1/2" x 3/16"  
 1/2" x 1/2" x 3/16"  
 1/2" x 1/2" x 3/16"

STANDARD  
 1/2" x 1/2" x 3/16"  
 1/2" x 1/2" x 3/16"  
 1/2" x 1/2" x 3/16"