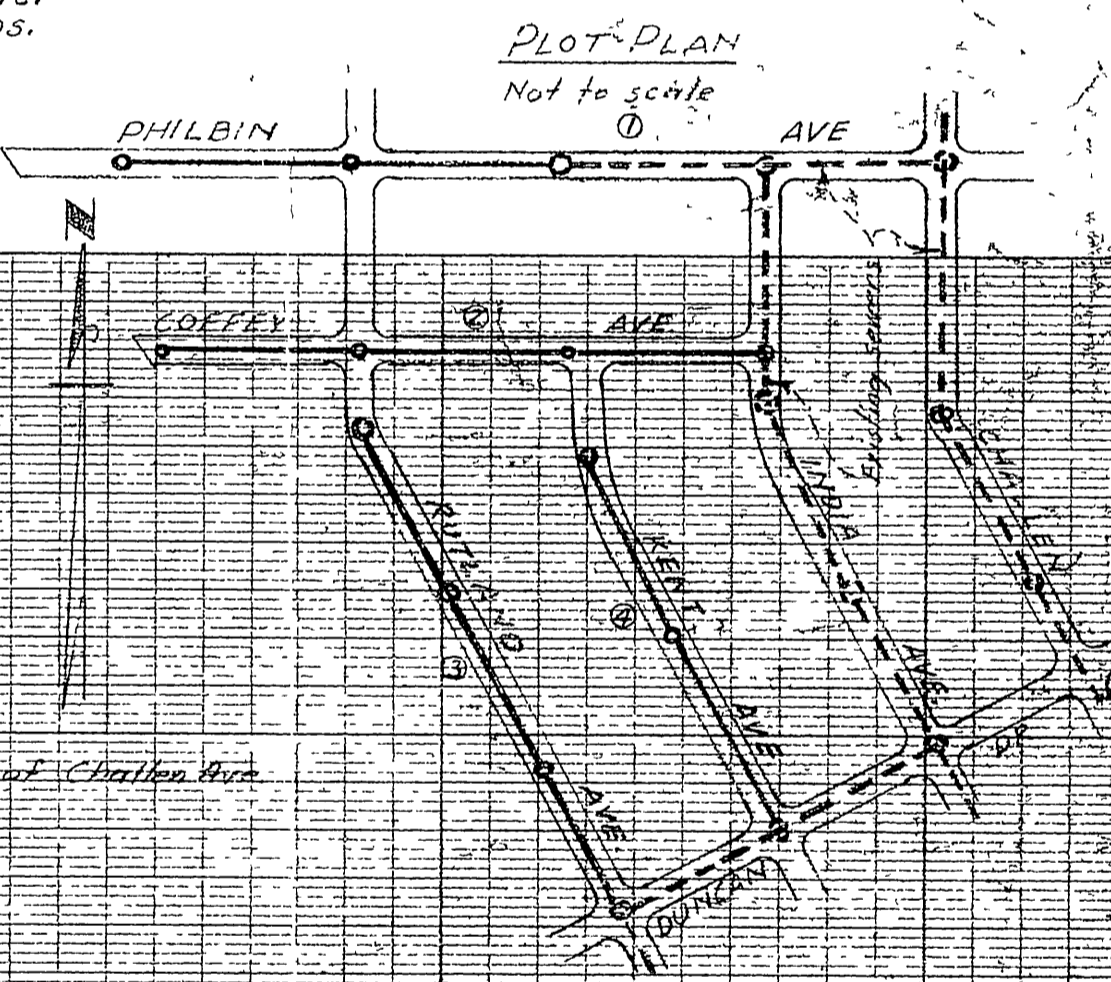
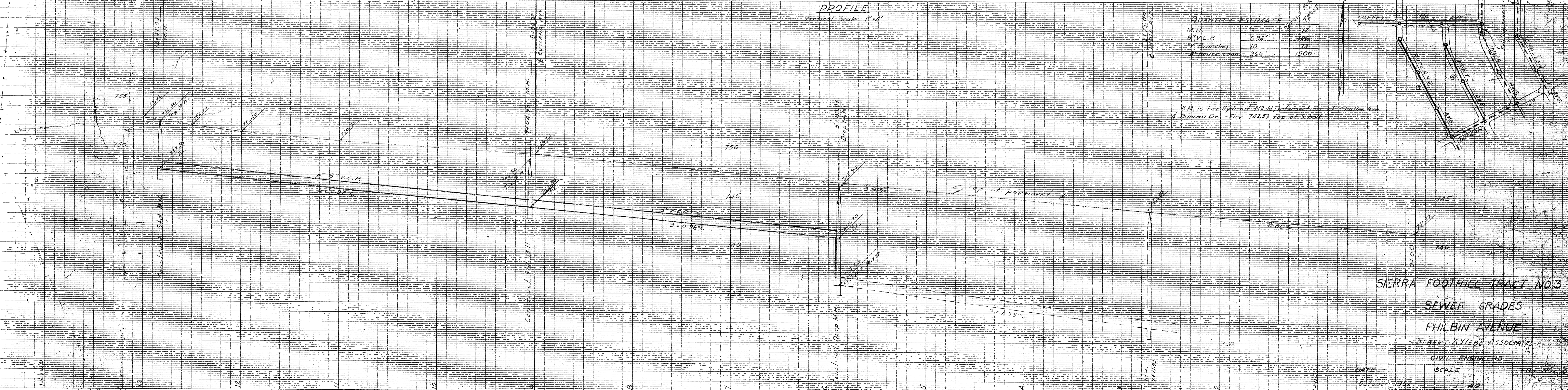


PLAN
Scale - 1"=40'

CURVE DATA
Lot corners at street inter-
sections & curb returns.
Δ = 90°
R = 20'
T = 20'
L = 31.42'



PROFILE
Vertical Scale - 1"=4'



QUANTITY ESTIMATE

ITEM	QUANTITY	UNIT	AMOUNT
M.H.	1	EA	12
8" V.C.P.	624'	LF	3120
Y Branches	10	EA	72
House conn.	36	EA	1500

B.M. is Fire Hydrant No. 11, intersection of Challen Ave. & Duane Dr. Elev. 148.53 top of 3 ball.

SIERRA FOOTHILL TRACT NO. 3

SEWER GRADES

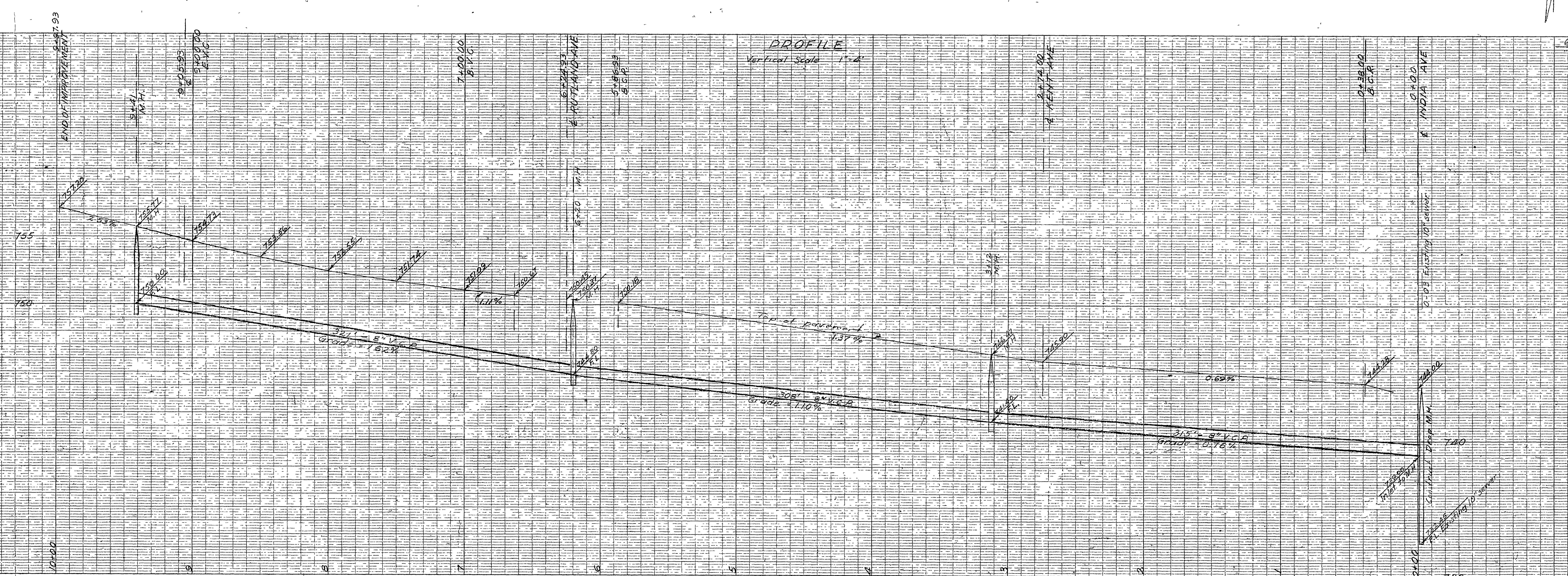
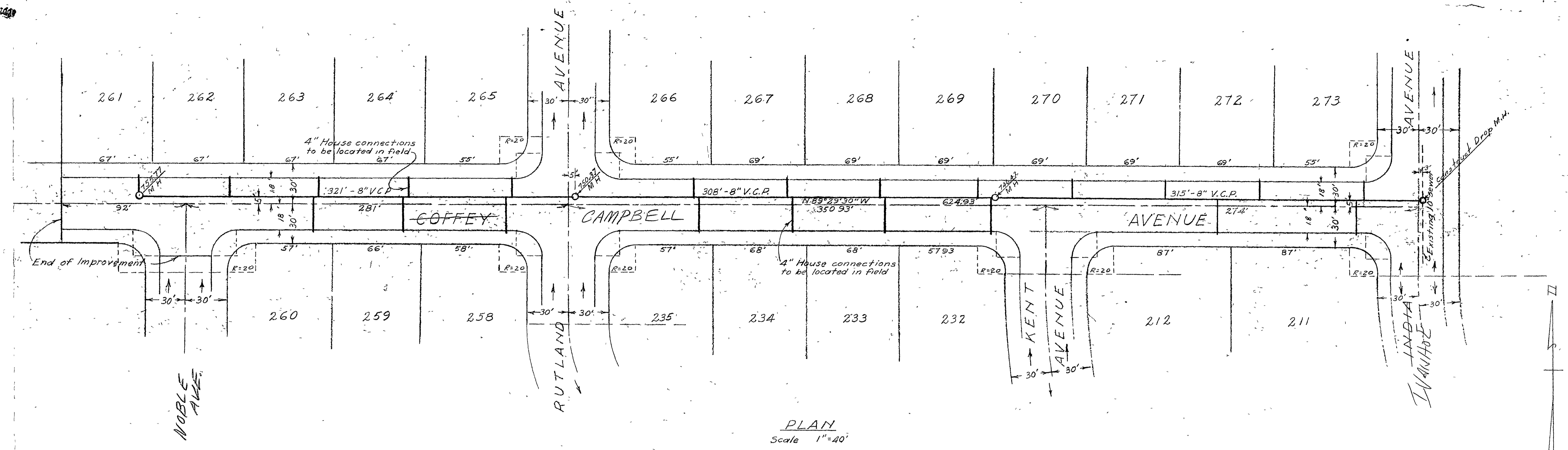
PHILBIN AVENUE

ALBERT A. WEBB ASSOCIATES

CIVIL ENGINEERS

DATE: October 1952
SCALE: 1"=40'
FILE NO.:

SIERRA FOOTHILL TRACT NO. 3
 SANITARY SEWERS
 COFFEY AVENUE
 ALBERT A. WEBB ASSOCIATES
 CIVIL ENGINEERS

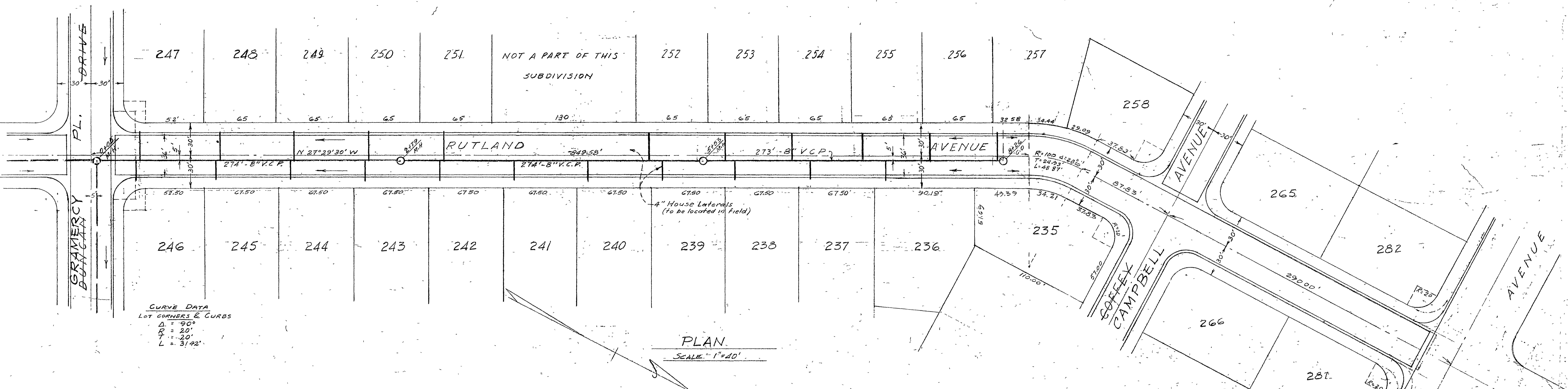


QUANTITY ESTIMATE

Branches	27
Manholes	4
3" Vitrified Clay Pipe	566'
4" House connections	204'

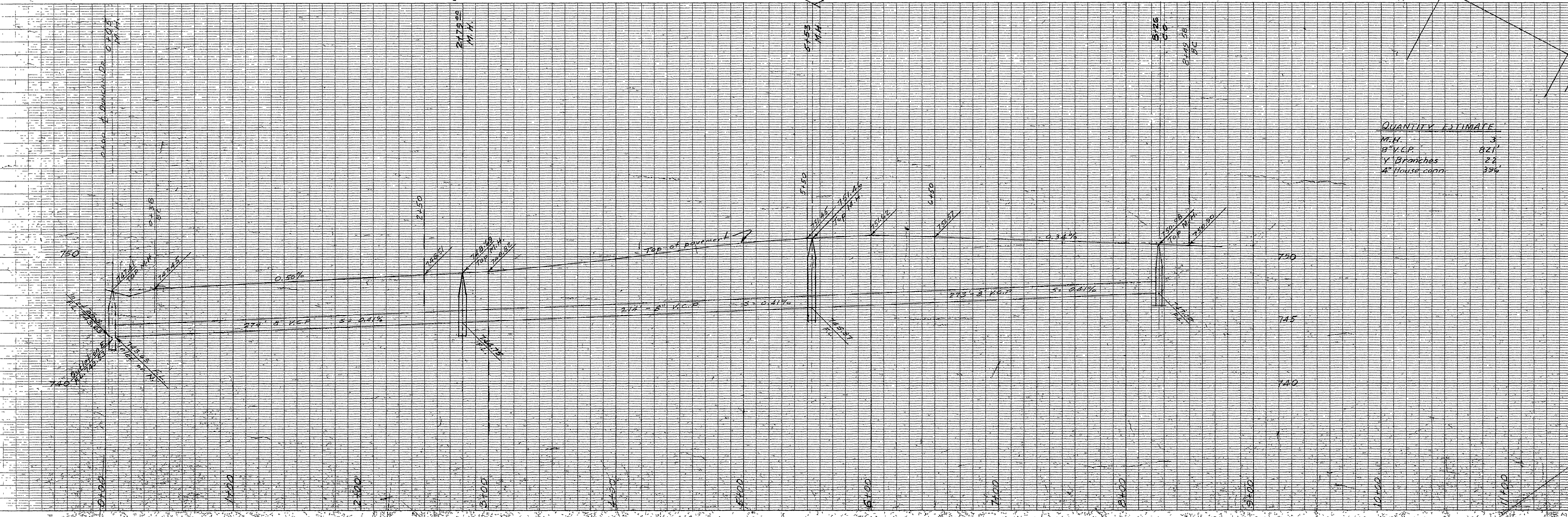
SIERRA FOOTHILL TRACT NO. 3
 SANITARY SEWERS
 COFFEY AVENUE
 ALBERT A. WEBB ASSOCIATES
 CIVIL ENGINEERS
 DATE: October 1962
 SCALE: 1"=40'
 FILE NO: 5

S-342
 sh. 2
 W052.7X
 SEWERS
 11-1200



CURVE DATA
 LOT CORNERS & CURBS
 Δ = 90°
 P = 20'
 L = 20'
 L = 31.42'

PLAN
 SCALE = 1"=40'



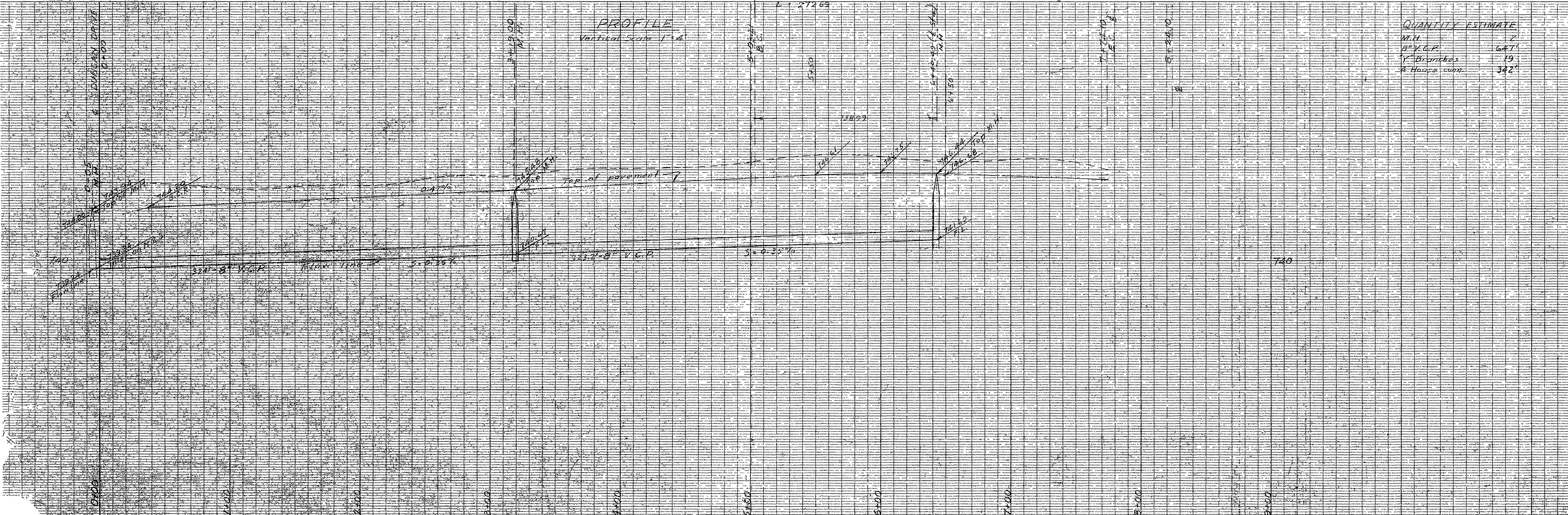
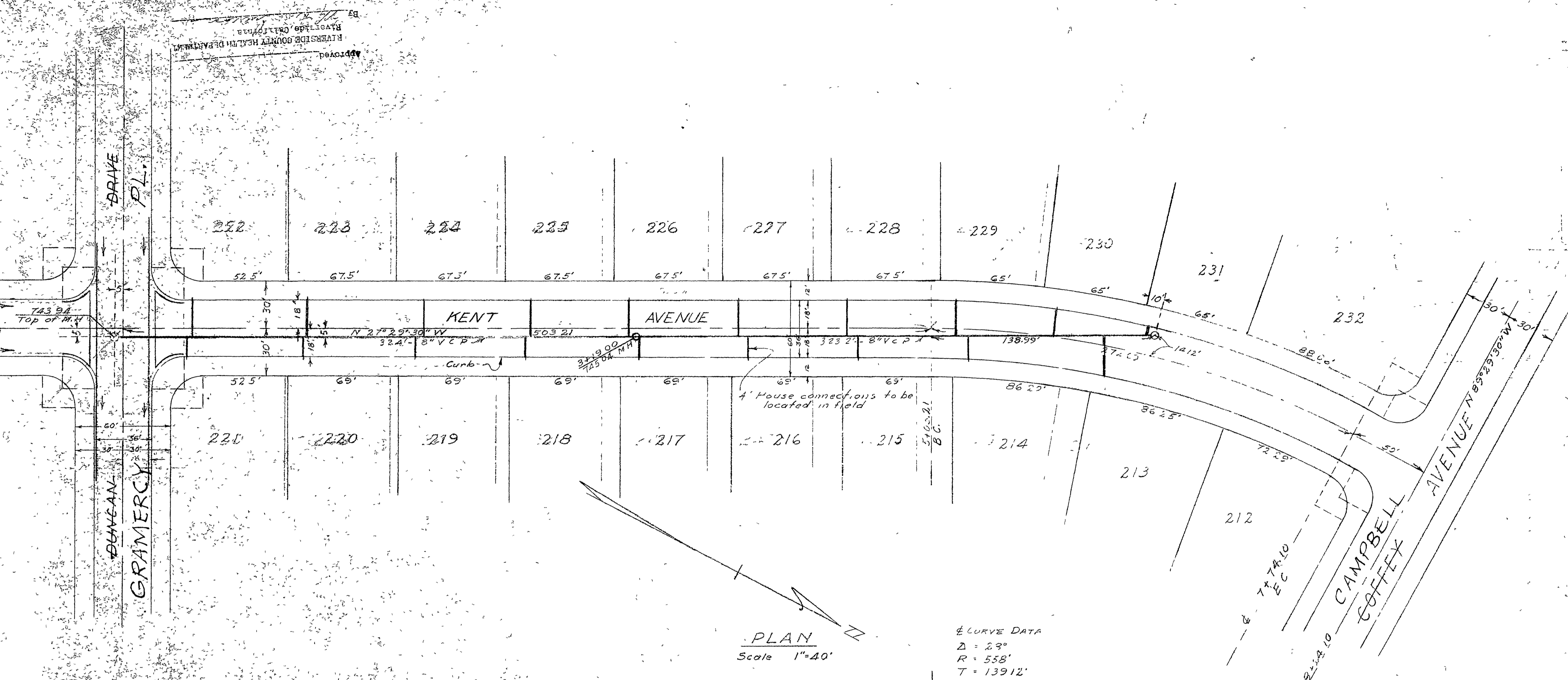
QUANTITY ESTIMATE

M.F.	3
8" V.C.P.	821'
Y Branches	22
4" House conn.	386

SIERRA FOOTHILL TRACT NO 3
 SANITARY SEWERS
 RUTLAND AVENUE
 ALBERT A. WEBB ASSOCIATES
 CIVIL ENGINEERS

DATE: October 1982
 SCALE: 1"=40'

S-342



QUANTITY ESTIMATE

W.P.	7
3" V.C.P.	647'
1" Brimchals	19
4' House conn.	342'

SIERRA FOOTHILL TRACT NO. 3
 SEWER GRADES
 KENT AVENUE
 ROBERT A. WEAR ASSOCIATES
 CIVIL ENGINEERS
 DATE: October 1952
 SCALE: 1"=40'
 FILE NO.