

PLAN
Scale 1"=40'

PROFILE
Vertical Scale 1"=4'

SEWER PLAN AND PROFILE
OF
BEEJAY STREET
IN
ANZA SIERRA TRACT
UNIT NO. 2

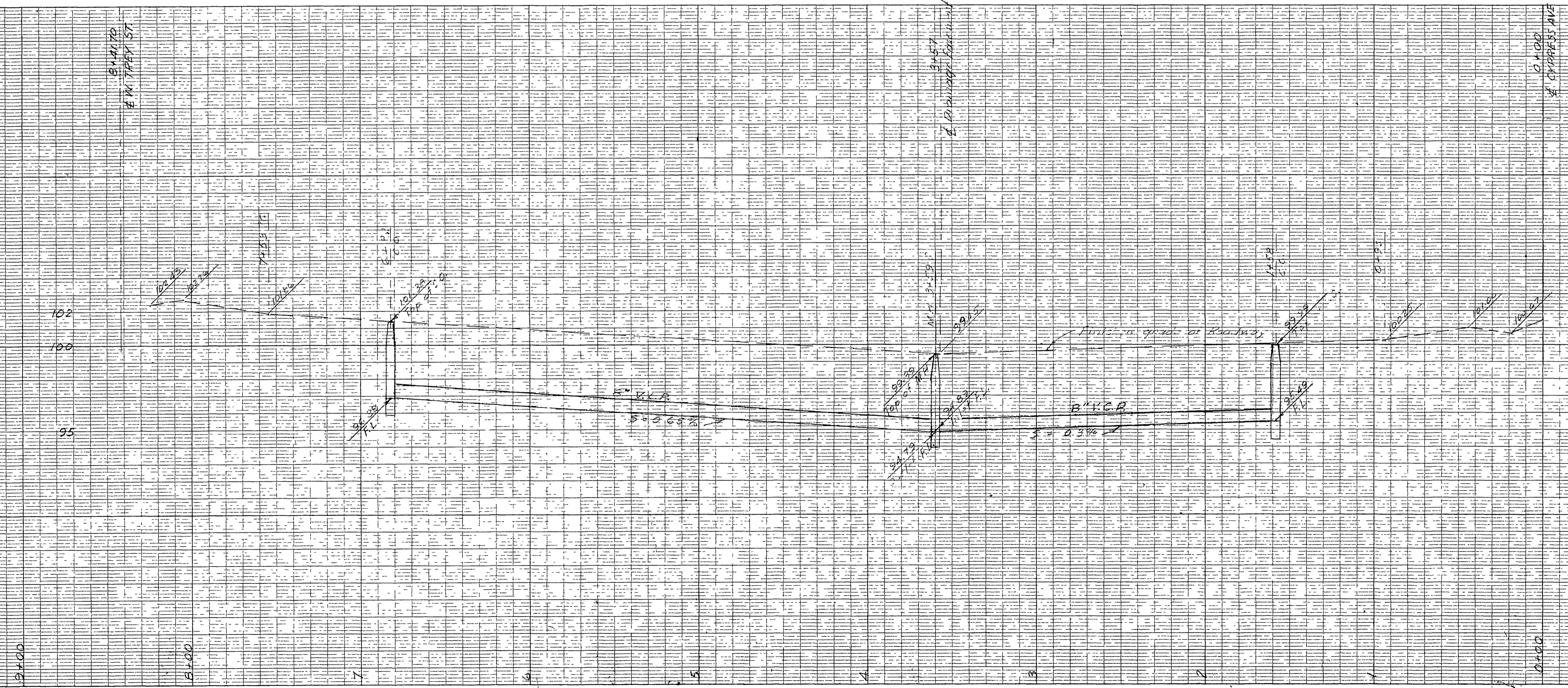
ALBERT A. WEBB ASSOCIATES
CIVIL ENGINEERS

SEPTEMBER 1952

SCALE 1"=40'

Approved this 15 day of September 1952

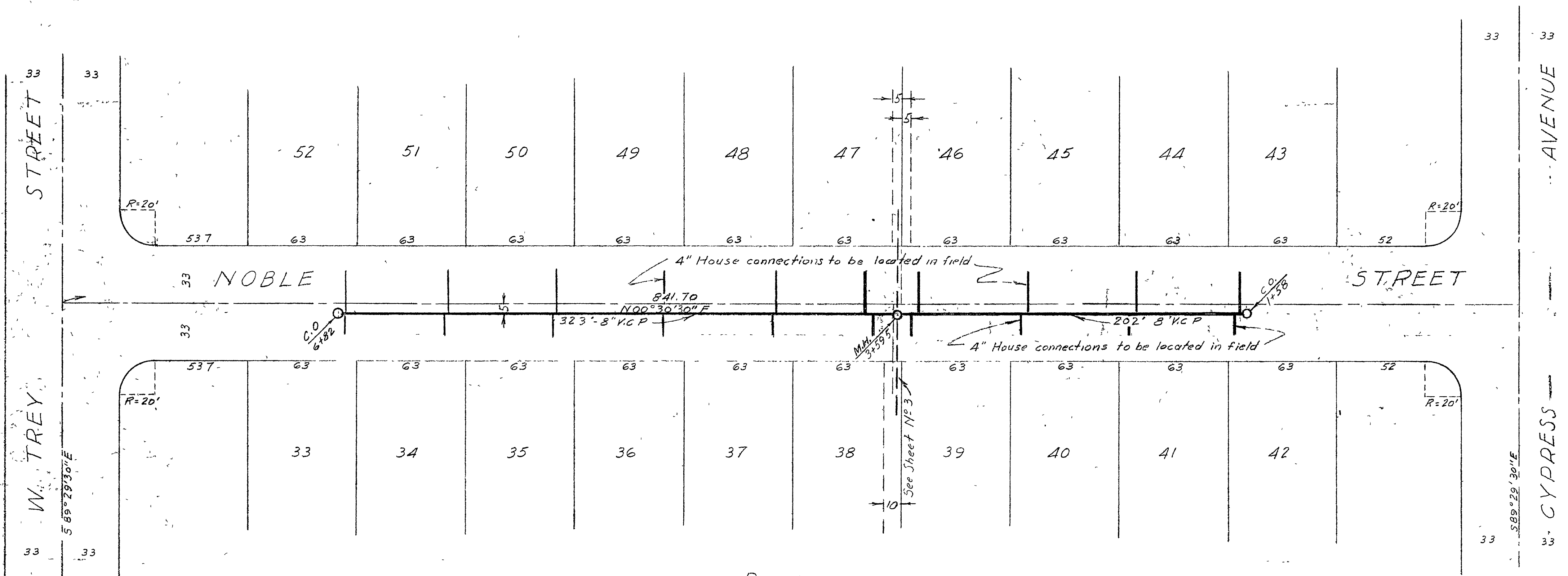
A.C. Kieth, County Surveyor
By C. T. Weber Deputy



B.M. on R.H. #65 near int. of Noble St. & W. Trey St.
Elev. 100.00 (assumed)
T.M. on 223, 727.33

List of Materials - Total Sheets 1, 2, & 3

8" Vitruvian Clay Pipe	1716 Lin. Ft.
54" Manholes	2
Drop Manholes	1
Clearouts	4
Y Branches	40
4" House Connections	720 Lin. Ft.



PROFILE
Vertical Scale 1"=4'

SEWER PLAN AND PROFILE
OF
NOBLE STREET
IN
ANZA SIERRA TRACT
UNIT NO 2

ALBERT A. WEBB ASSOCIATES
CIVIL ENGINEERS

SEPTEMBER 1952

SCALE 1"=40'

Approved this 15 day of September 1952.

A.C. Kieth, County Surveyor

By: *[Signature]* Deputy

B.M. is E bolt on P.H. #85 near int. of Noble St & W. Trey St
Elev. 100.00 (assumed)
True elev. 751.93

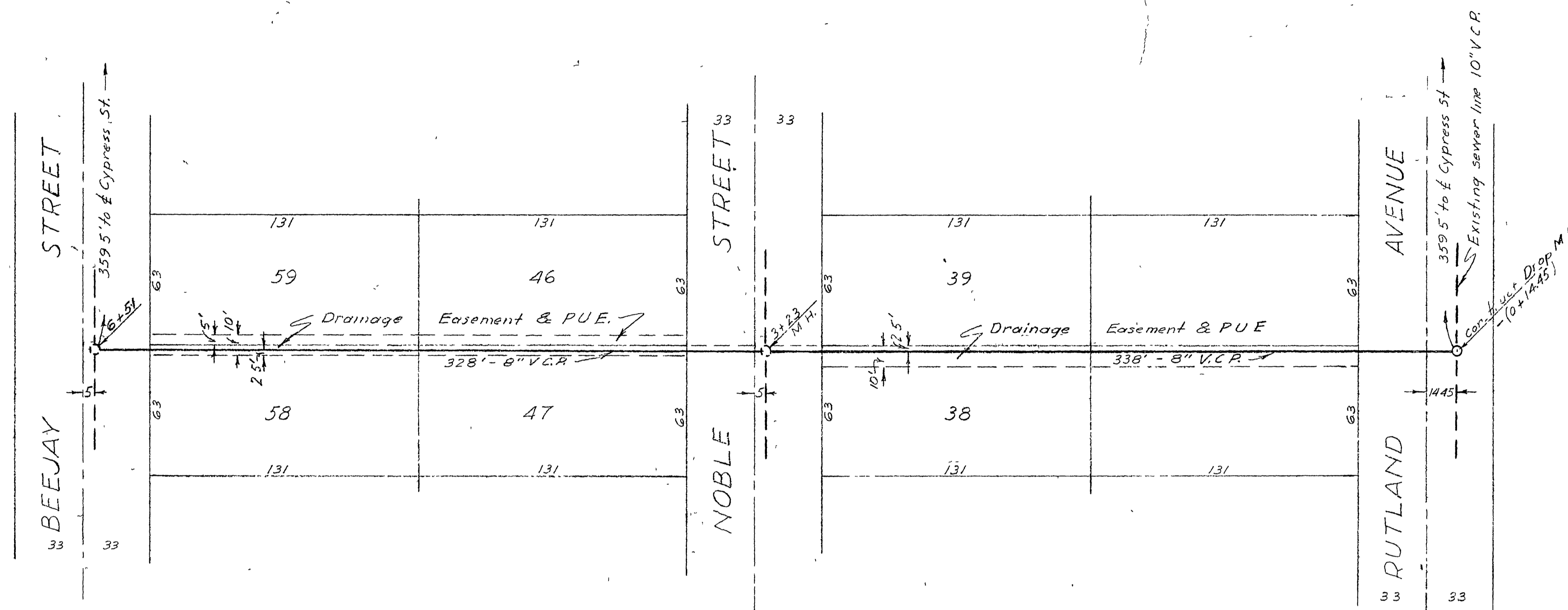


ON 100# BOND PAPER MADE IN U.S.A.
PERFECT COPY

EUGENE DIEZGEN CO.
PLATE A
PERFECT COPY

ON 100# BOND PAPER MADE IN U.S.A.
PERFECT COPY

EUGENE DIEZGEN CO.
PLATE A
PERFECT COPY



PLAN
Scale 1"=40'

PROFILE
Vertical Scale 1"=4'



SEWER PLAN AND PROFILE
OF
DRAINAGE EASEMENT
IN
ANZA SIERRA TRACT
UNIT No 2

ALBERT A. WEBB ASSOCIATES
CIVIL ENGINEERS

SEPTEMBER 1952 SCALE 1"=40'

Approved this 15 day of September 1952.
A C Kleith, County Surveyor
By *[Signature]* Deputy

NOTE
Backfill in Drainage Easement shall be compacted
to not less than 90% of Ultimate.