

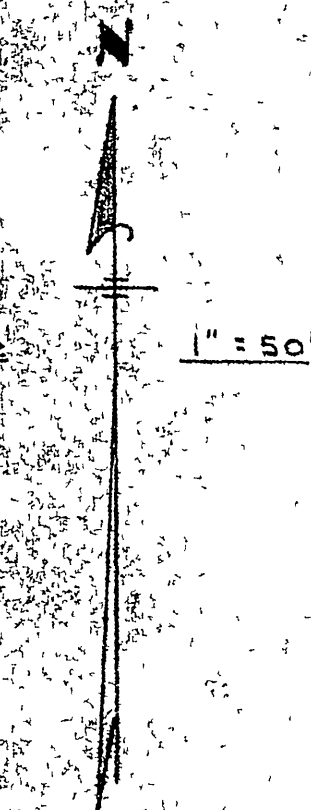
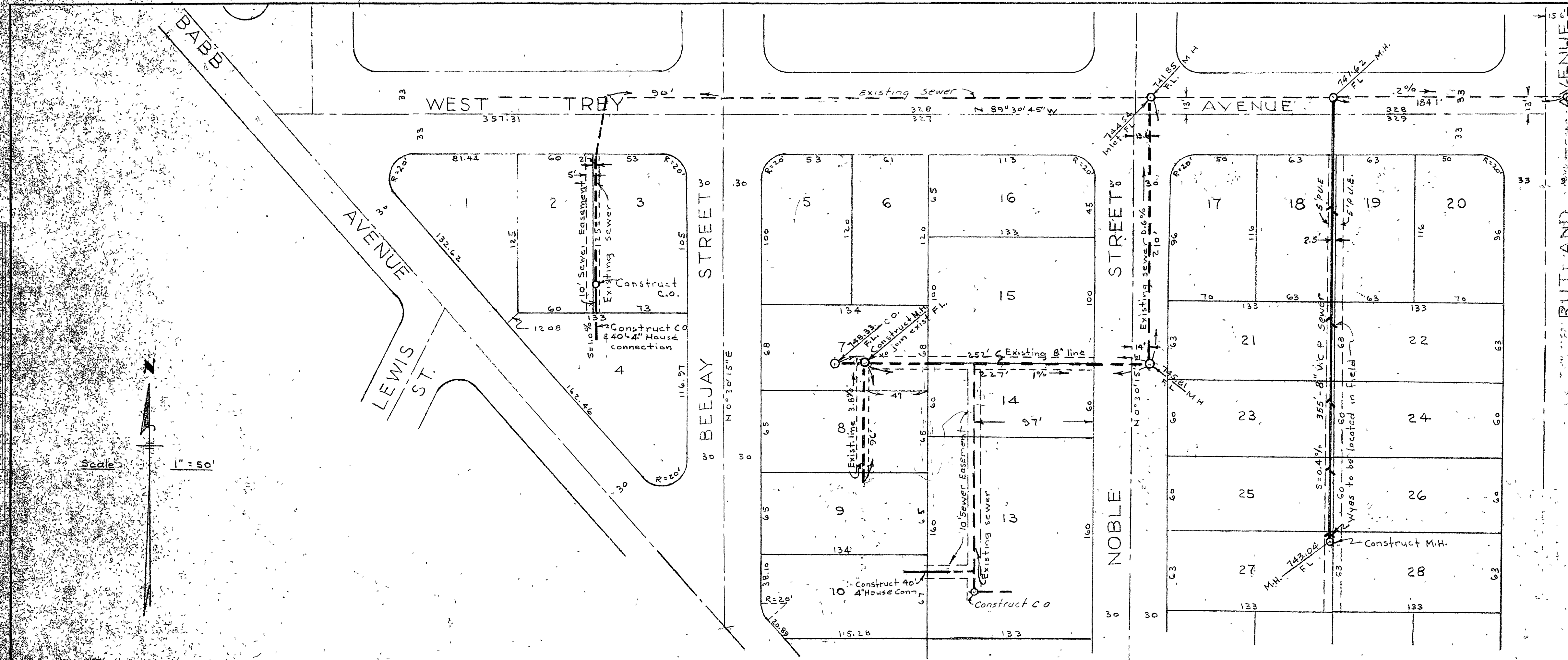
SEWER PLAN AND PROFILE
OF
WEST TREY AVENUE
AND LATERALS
IN THE
DOYLE TRACT

BY
ALBERTA WEBB ASSOCIATES
CIVIL ENGINEERS AUGUST 1953
RIVERSIDE, CALIFORNIA

Scale 1" = 50'

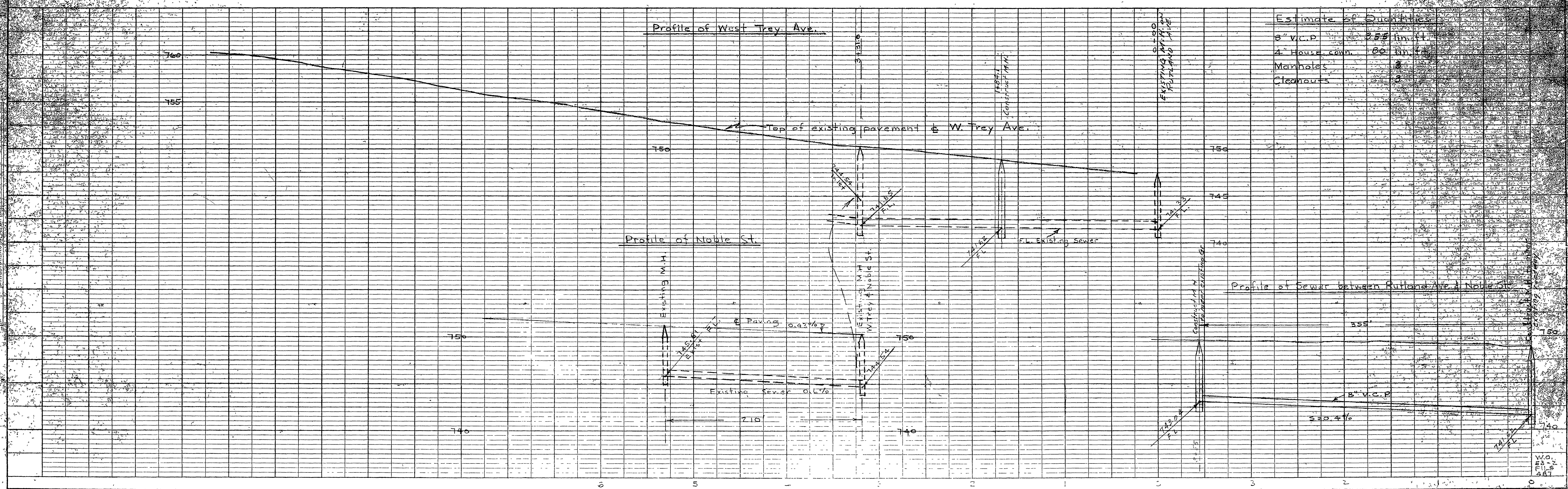
S.M. Belt, FH 350. W. 1200' N. of Rutland & Philbin Ave. Elev. 753.96
Sewer installations shall be constructed in accordance with Plans & Specifications of the County Surveyor.

Approved this _____ day of _____ 1953
A.C. Keith, County Surveyor
By _____ Deputy



PLAN
SURVEYED, PLOTTED, AND CHECKED BY ALBERTA WEBB ASSOCIATES, CIVIL ENGINEERS, RIVERSIDE, CALIFORNIA

PROFILE
SURVEYED, PLOTTED, AND CHECKED BY ALBERTA WEBB ASSOCIATES, CIVIL ENGINEERS, RIVERSIDE, CALIFORNIA



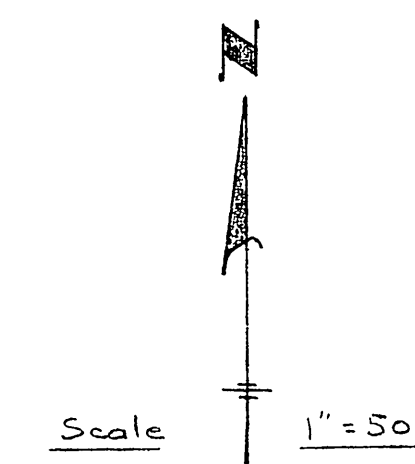
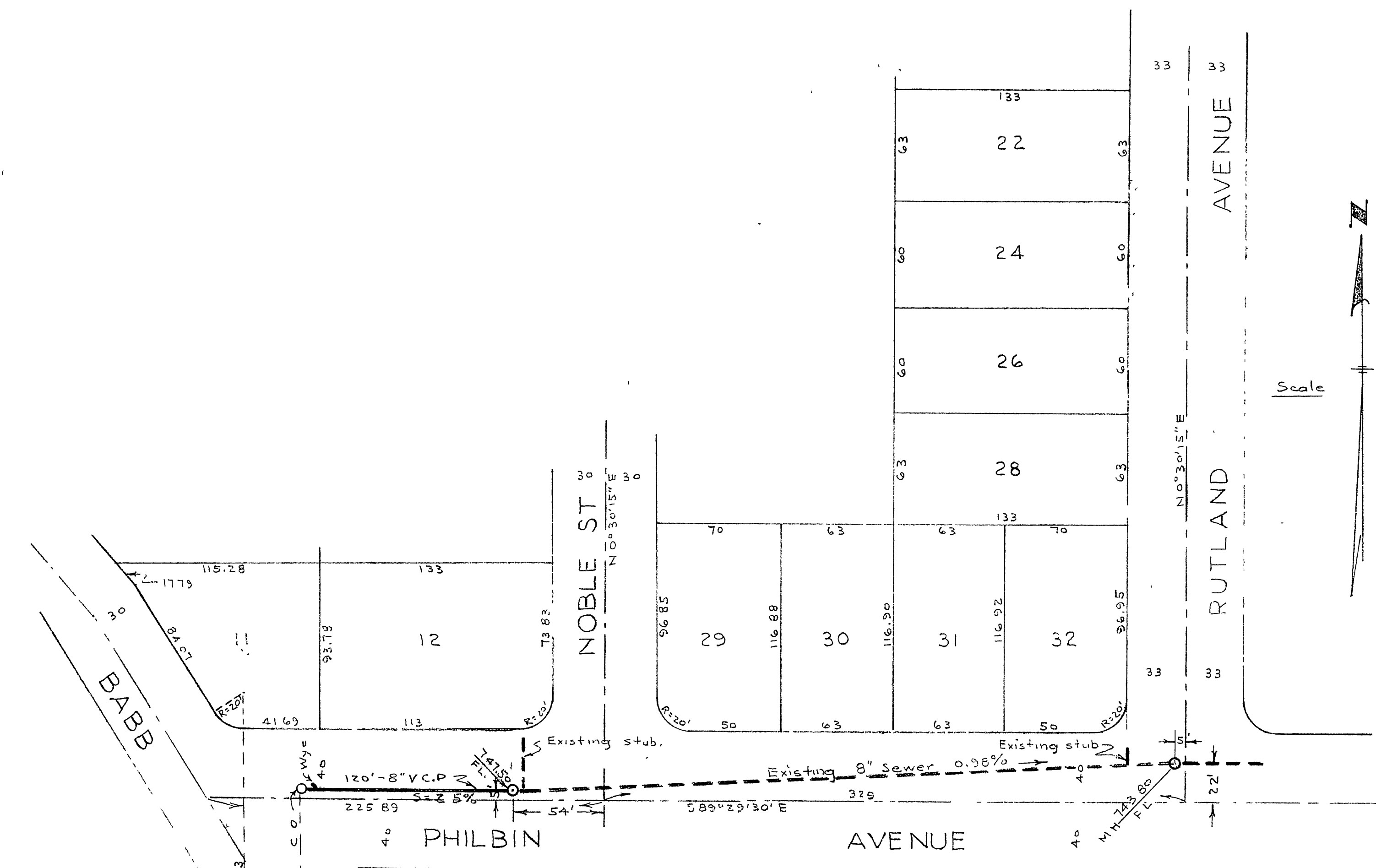
Estimate of Quantities	
8" V.C.P.	855 lin. ft.
4" House conn.	80 lin. ft.
Manholes	3
Cleanouts	2

SEWER PLAN AND PROFILE
 OF
 PHILBIN AVENUE
 AND LATERALS
 IN THE
 DOYLE TRACT

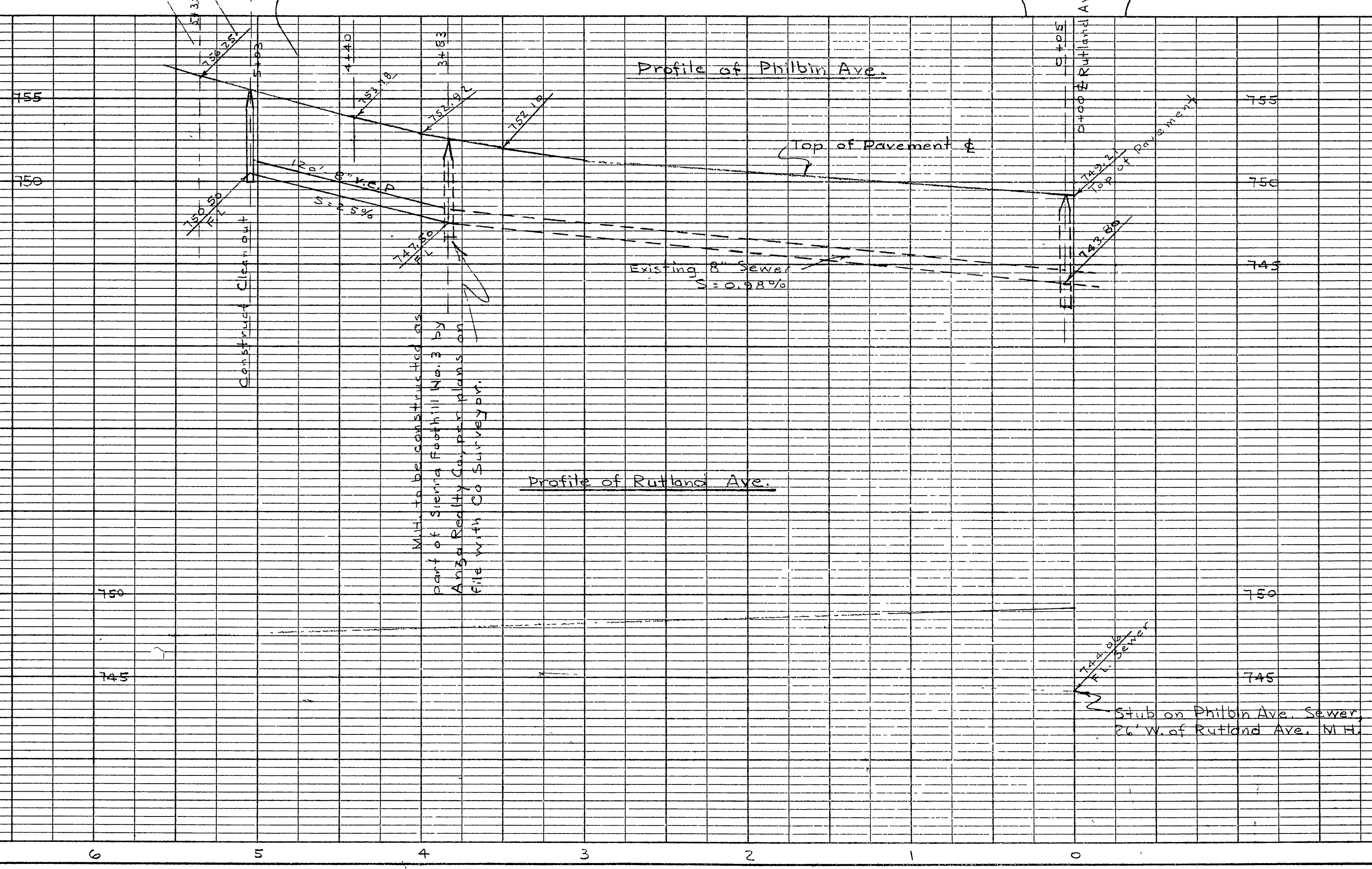
~ BY ~
 ALBERTA WEBB ASSOCIATES
 CIVIL ENGINEERS AUGUST 1953
 RIVERSIDE, CALIFORNIA

PLAN	
CONTRACT NO.	DATE
BY	
CHECKED	
NOTED	
APPROVED	
DATE	

PROFILE	
CONTRACT NO.	DATE
BY	
CHECKED	
NOTED	
APPROVED	
DATE	



Approved this ___ day of _____ 1953.
 A.C. KEITH - County Surveyor
 By B. G. Smith Deputy



LIII-19-2
 S-344 Sh 2