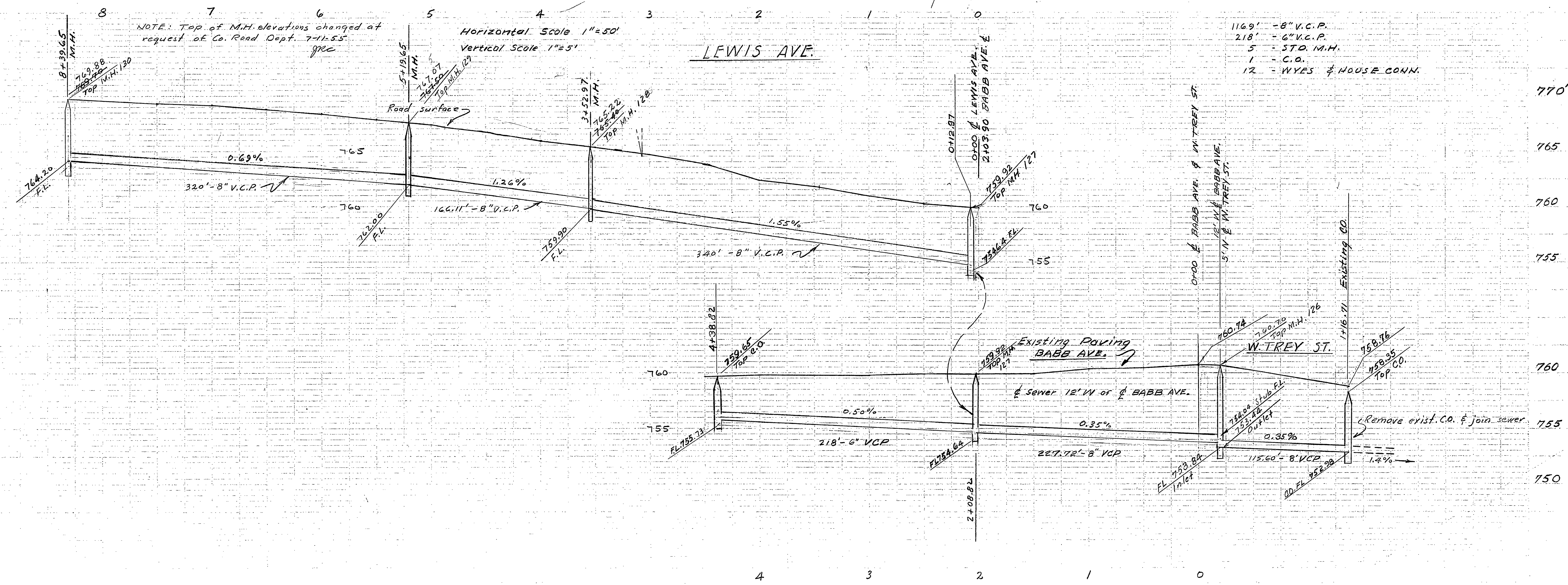
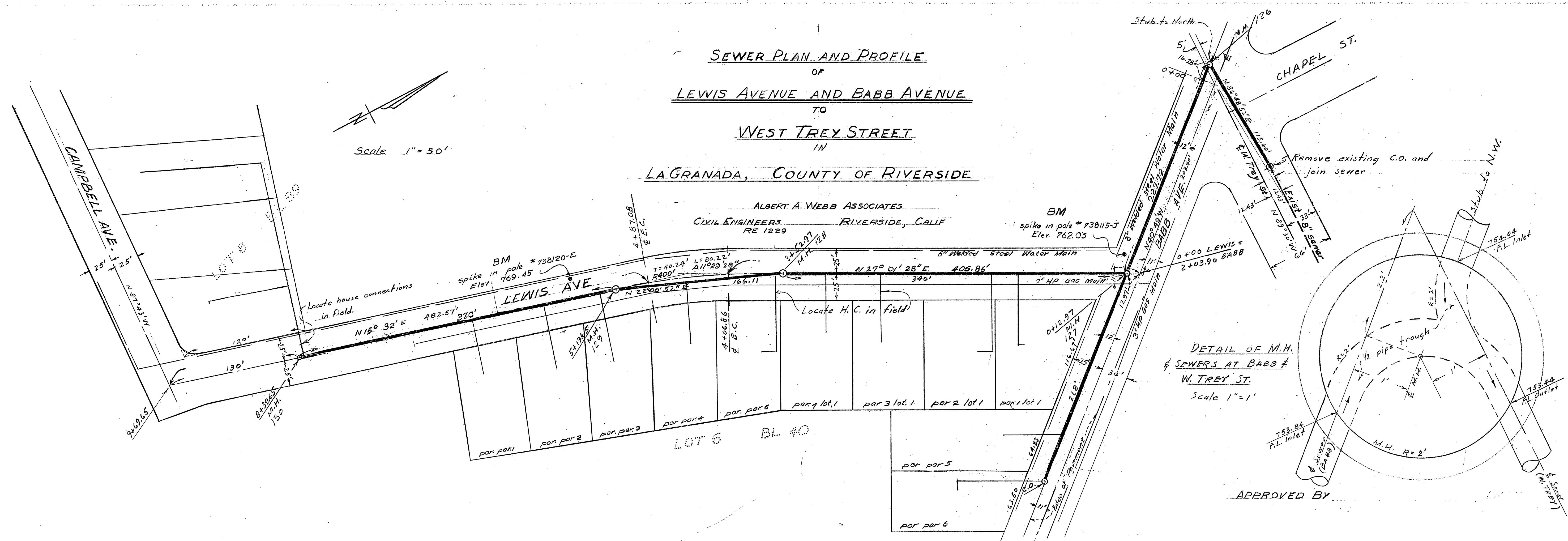


SEWER PLAN AND PROFILE
 OF
LEWIS AVENUE AND BABB AVENUE
 TO
WEST TREY STREET
 IN
LA GRANADA, COUNTY OF RIVERSIDE

ALBERT A. WEBB ASSOCIATES
 CIVIL ENGINEERS RIVERSIDE, CALIF
 RE 1229



W.O. 55-59