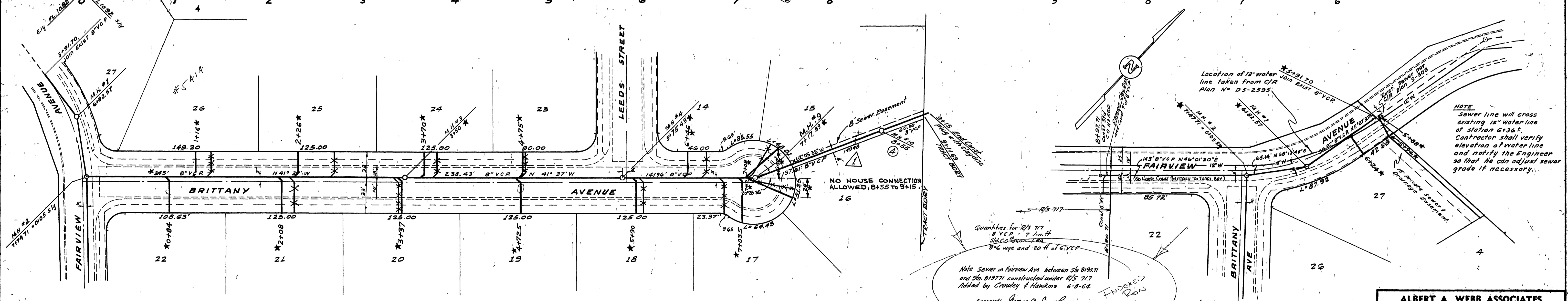


PROFILE SURVEYED	BY	DATE
NOTE BOOK		
PLANNED OUTLINED		
STRUCTURE NOTATIONS CHECKED		

PROFILE SCALE
 HORIZ. 1"=50'
 VERT. 1"=5'

BENCH MARK:
 Chiseled "X" in headwall of bridge over
 canal of S.E. corner Overhavan and
 Fairview Avenues
 ELEV. = 102.31 L.S. 288727



NOTE:
 Sewer line will cross
 existing 12" water line
 of station 6+36.5.
 Contractor shall verify
 elevation of water line
 and notify the Engineer
 so that he can adjust sewer
 grade if necessary.

Note Sewer in Fairview Ave. between Sta. 819211
 and Sta. 819771 constructed under R/S 717
 Added by Crowley & Hawkins 6-8-64.
 Approved: *George D. Crowley*
 Ron W. ...
 Approved: *[Signature]*
 Director of Public Works

QUANTITY ESTIMATE

1 Manhole Standard No. 500	9 Ea.
2 8" V.C.P. Sewer	1,474 Lin. Ft.
3 4" V.C.P. lateral	1,067 Lin. Ft.
4 Wyes	27 Ea.

QUANTITY ESTIMATE (MAIN EXTENSION THRU
 EASEMENT ON LOT 15)

1 Manhole Standard No. 500	1 ea.
2 8" V.C.P. Sewer	198 Lin. Ft.
3 Clay disc plug	1 ea.

GENERAL NOTES:

- All Construction shall be in accordance with Standard and Specifications No. 461 of the City of Riverside Department of Public Works.
- Location of laterals to be determined in the field.
- Pipe shall be bedded Case II Std. Dwg. No. 452.
- Prior to the construction of sewer, Contractor is to excavate and contact Engineer for verification of elevations of existing sewer of the Tract Boundary on Leeds Street and where the sewer line crosses the 12" water line 10'± Nly of the intersection of Fairview ave and Brittany ave

REVISION		
MARK	DATE	DESCRIPTION
Δ	8/22/62	Extend sewer thru easement on Lot 15 using CRJ. Sem
⊙	9/14/62	Revised grades on Fairview & Brittany Avenues. (Fairview grade lowered to meet water line, Brittany lowered to meet new Fairview grade). Manhole #19 moved from Sta. 6+52 to Sta. 6+55 as shown.
⊙	9/27/62	

ALBERT A. WEBB ASSOCIATES
 CIVIL ENGINEERS - RIVERSIDE, CALIFORNIA
 APPROVED: *Albert A. Webb* DATE 7/3/62
 11 9872

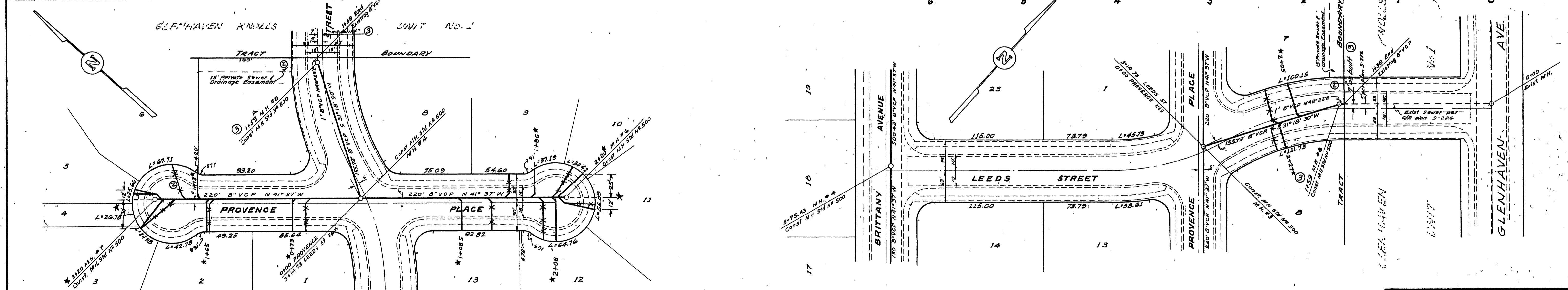
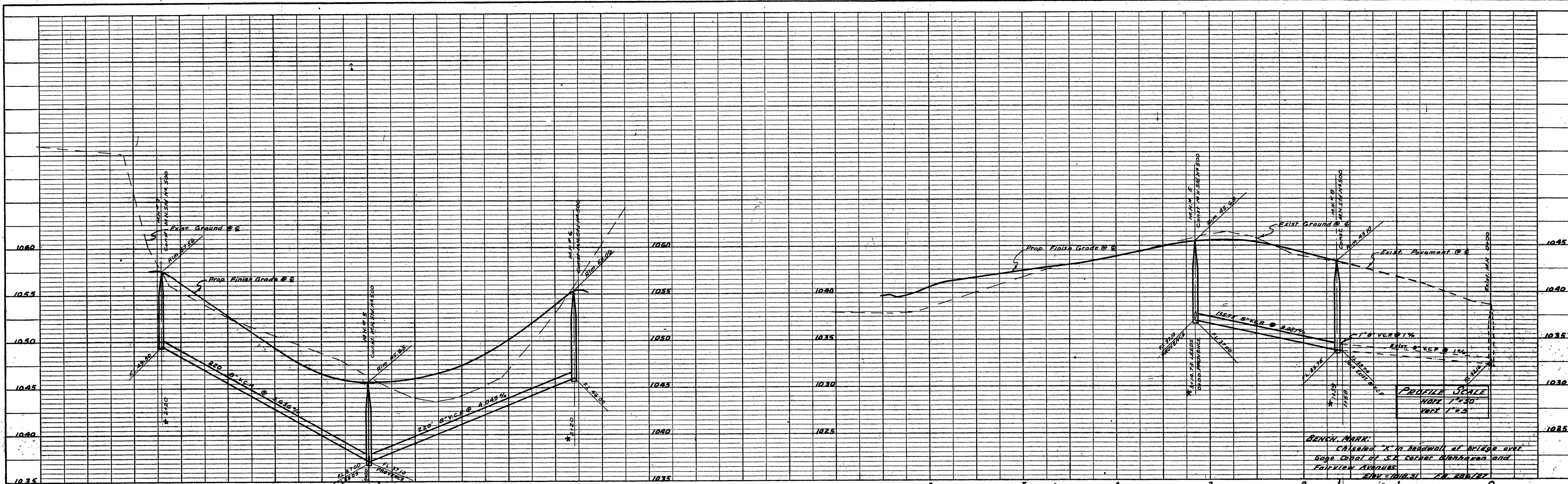
CITY OF RIVERSIDE, CALIFORNIA
 DEPARTMENT OF PUBLIC WORKS

SEWER PLAN & PROFILE
 FAIRVIEW AVENUE
 BRITANNY AVENUE
 TRACT NO. 2073
 AND R/S 717

APPROVED BY: *[Signature]*
 DIRECTOR OF PUBLIC WORKS
 DATE 7-16-62
 NO. S. 347
 SHEET 1 OF 2

PLAN SURVEYED	BY	DATE
NOTE BOOK		
PLANNED OUTLINED		
STRUCTURE NOTATIONS CHECKED		

* = "As Built" 4 Ball, 2-5-63



PROFILE

DATE	
BY	
CHECKED	
PLOTTED	
SURVEYED	
NOTE BOOK NO.	
STRUCTURE NO.	

PLAN

DATE	
BY	
CHECKED	
PLOTTED	
SURVEYED	
NOTE BOOK NO.	
STRUCTURE NO.	

ALBERT A. WEBB ASSOCIATES
 CIVIL ENGINEERS - RIVERSIDE, CALIFORNIA
 APPROVED *Albert A. Webb* DATE 7/3/62

REVISION		DESCRIPTION
MARK	DATE	
②	8-31-62	RELOCATED SEWER LATERAL FOR LOT 6 FROM LEEDS ST TO PROVENCE PL. <i>W.D.</i>
③	9/14/62	Show existing sewer "as built" LEEDS STREET, relocate M.H. #8 to meet existing sewer <i>W.D. ORJ</i>
*	1-29-63	"As Built" H.Ball

DATE	May 17, 1962	SCALE	Horiz: 1"=50'-Vert: 1"=5'
DRAWN	H.L.M.	W.O.	60-222
CHECKED		F.B.	4/7/15

APPROVED BY	<i>W. Martin</i>	NO.	S-347
DIRECTOR OF PUBLIC WORKS			
DATE	7-16-62	SHEET	2 OF 2