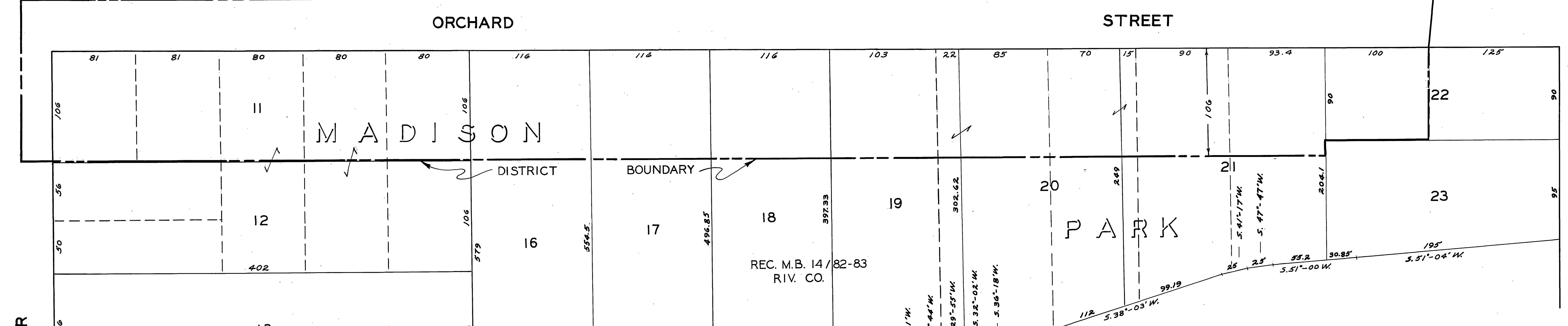
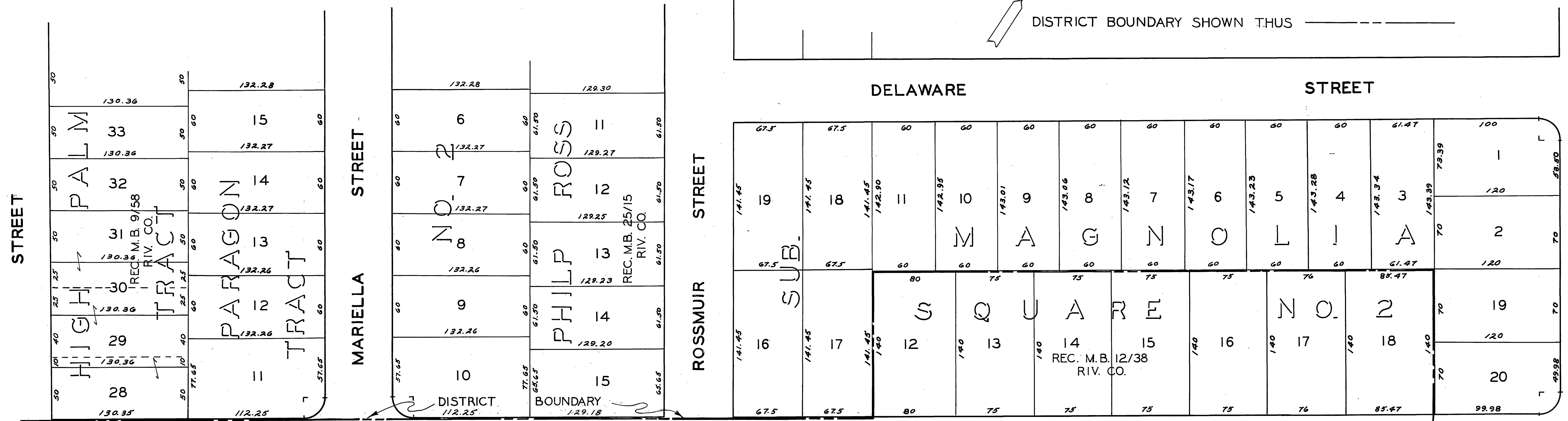


SCALE 1" = 50'

DISTRICT BOUNDARY SHOWN THUS



MAP SHOWING THE LANDS INCLUDED WITHIN THE ASSESSMENT DISTRICT TO BE BENEFITED BY THE CONSTRUCTION OF A SANITARY SEWER.

| REVISIONS | | CITY OF RIVERSIDE CALIFORNIA DEPARTMENT OF PUBLIC WORKS |
|-----------|------|---|
| MARK | DATE | |
| | | ORCHARD STREET SANITARY SEWER DISTRICT HOOVER ST. TO WASHINGTON ST. |
| | | |

| | | |
|---|----------------------------------|---|
| DESIGNED BY DRAWN BY B.S. | CHECKED BY <i>[Signature]</i> | APPROVED BY <i>[Signature]</i> DIRECTOR OF PUBLIC WORKS |
| RECOMMENDED BY <i>[Signature]</i> ASSISTANT CITY ENGINEER | DATE May 16, 1956 | S-34 A SHEET 1 OF 1 |